

Medalist i3070 Series 5i Inline ICT System

Operator Guide



Agilent Technologies

Notices

© Agilent Technologies, Inc. 2013

No part of this manual may be reproduced in any form or by any means (including electronic storage and retrieval or translation into a foreign language) without prior agreement and written consent from Agilent Technologies, Inc. as governed by United States and international copyright laws.

Manual Part Number

E9988-90001

Edition

First edition, December 2013

Printed in Malaysia

Agilent Technologies Microwave Products (Malaysia) Sdn. Bhd.
Bayan Lepas Free Industrial Zone
11900 Penang, Malaysia

Warranty

The material contained in this document is provided "as is," and is subject to being changed, without notice, in future editions. Further, to the maximum extent permitted by applicable law, Agilent disclaims all warranties, either express or implied, with regard to this manual and any information contained herein, including but not limited to the implied warranties of merchantability and fitness for a particular purpose. Agilent shall not be liable for errors or for incidental or consequential damages in connection with the furnishing, use, or performance of this document or of any information contained herein. Should Agilent and the user have a separate written agreement with warranty terms covering the material in this document that conflict with these terms, the warranty terms in the separate agreement shall control.

Technology Licenses

The hardware and/or software described in this document are furnished under a license and may be used or copied only in accordance with the terms of such license.

Restricted Rights Legend

If software is for use in the performance of a U.S. Government prime contract or subcontract, Software is delivered and licensed as "Commercial computer software" as defined in DFAR 252.227-7014 (June 1995), or as a "commercial item" as defined in FAR 2.101(a) or as "Restricted computer software" as defined in FAR 52.227-19 (June 1987) or any equivalent agency regulation or contract clause. Use, duplication or disclosure of Software is subject to Agilent Technologies' standard commercial license terms, and non-DOD Departments and Agencies of the U.S. Government will receive no greater than Restricted Rights as defined in FAR 52.227-19(c)(1-2) (June 1987). U.S. Government users will receive no greater than Limited Rights as defined in FAR 52.227-14 (June 1987) or DFAR 252.227-7015 (b)(2) (November 1995), as applicable in any technical data.

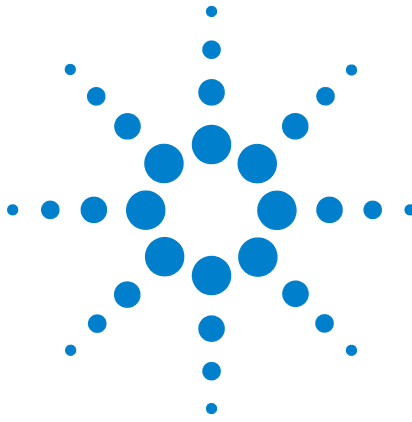
Safety Notices

CAUTION

A **CAUTION** notice denotes a hazard. It calls attention to an operating procedure, practice, or the like that, if not correctly performed or adhered to, could result in damage to the product or loss of important data. Do not proceed beyond a **CAUTION** notice until the indicated conditions are fully understood and met.

WARNING

A **WARNING** notice denotes a hazard. It calls attention to an operating procedure, practice, or the like that, if not correctly performed or adhered to, could result in personal injury or death. Do not proceed beyond a **WARNING** notice until the indicated conditions are fully understood and met.



Operator Guide





Safety Information	2
Overview of the System	3
Logging In to the System	4
Production Testing	5

Safety Information

Warning and Hazard Labels

Pay attention to the following labels when they appear on the equipment.

Table 1 Warning Labels on System

Label	Description
	DANGER: High Voltage Do not detach the protective covers. Operating this equipment without covers may cause electric shock.
	WARNING: Moving Parts (General) Do not touch the equipment while it is running. Keep clear of moving machinery.
	WARNING: Moving Parts (Hand) Do not touch the equipment while it is running. Keep hands clear of moving machinery.
	WARNING: Pinch Hazard Do not touch the equipment while it is running. Keep hands away from the indicated areas to avoid pinched fingers.

Emergency Stop



In case of emergency, press the red **Emergency Stop** switch ([Figure 1](#)) to cut off power to the system.

Resetting the Emergency Stop

- 1 Turn the red **Emergency Stop** switch clockwise to release it.
- 2 Press the **Reset** button to reset the safety relay and resume operation.

Overview of the System

Figure 1 Medalist i3070 Series 5i (Left-to-Right System)



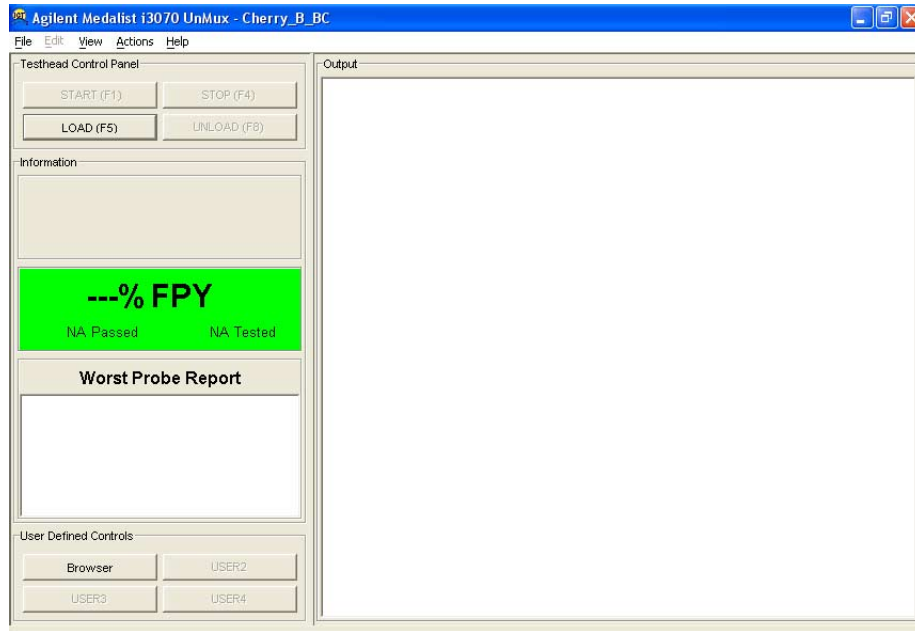
Tower Light

- Green** System is running in Auto Mode.
- Amber** System has stopped. There is no board available or the downstream machine is busy.
- Red** System has stopped. There is a defect or error that requires attention.

Logging In to the System

Log in to Windows with the user name and password provided by your administrator.

The Operator Interface starts automatically.



Logging Off

Before you log off, make sure you exit the Operator Interface.

- 1 From the **File** menu, select **Exit**.
- 2 In Windows, select **Start > Log off**.

Production Testing

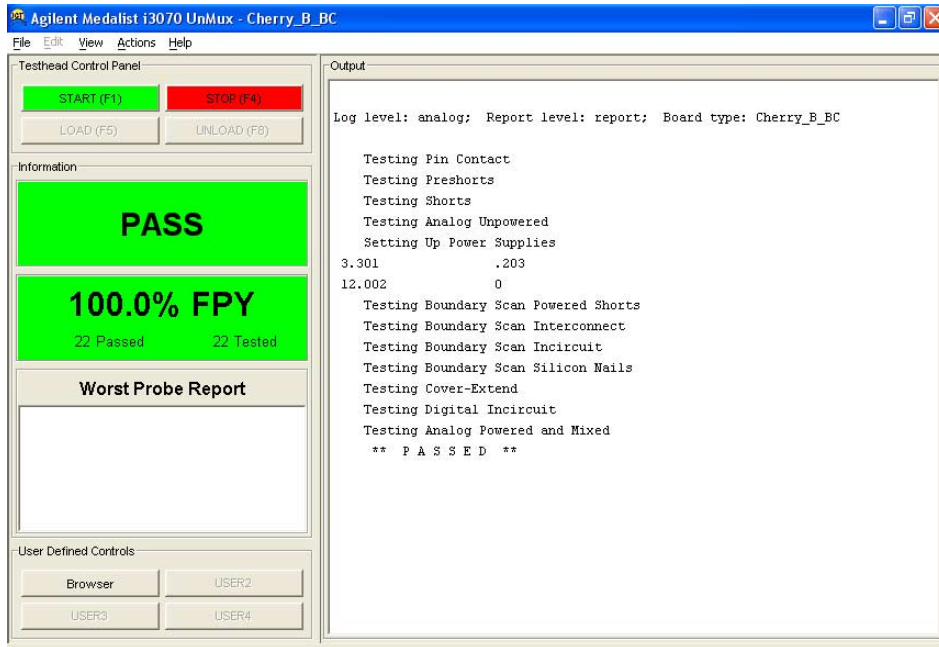
CAUTION

Wear an anti-static wrist strap at all times when handling PCBs which are susceptible to damage by electrostatic discharge. Connectors for the wrist strap are provided at the front of the system (see [Figure 1](#)).

- 1 From the Operator Interface, click **LOAD** to automatically load the testplan for the fixture in use.
- 2 Click **START** to run the testplan.

On the touch panel, Production mode is automatically set to **Auto** and the system is ready to receive a board and begin testing.

The **Output** area shows the details as the board tests are executed while the **Information** area provides a summary:



Stopping the testplan

Click **STOP** to stop running the testplan.

Optional DUT Access

The optional DUT Access feature pauses the system when a board fails, allowing the operator to remove the board.

A message will be displayed on the touch panel when a board fails.

- 1 Open the DUT Access window and remove the board from the Zone 2 conveyor.



- 2 Press **OK** on the touch panel.
- 3 Close the DUT Access window and press **OK** to lock it.
The system will automatically resume operation.

