

Keysight Technologies

Why Get an ADS Service Support Contract?

Advanced Design System (ADS) is the world's leading electronic design automation software for RF, microwave, signal integrity and power integrity applications. The ADS service support contract is a key part of Keysight's commitment to increasing your engineering productivity and advancing your long-term success. Whether you are a novice or an experienced user, our support services are designed to help you every step of the way.

Maintain your edge with the latest release

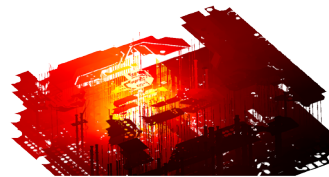
Keysight EEs of EDA regularly enhances and upgrades our ADS platform. Are you taking advantage of the significant updates that include not only new features, but user interface enhancements, speed improvements, defect fixes, service packs, and up-to-date application examples? A support contract guarantees that you are using the latest software technology, as soon as it becomes available and that you are keeping your productivity at a maximum.

Optimize Your Investment in ADS

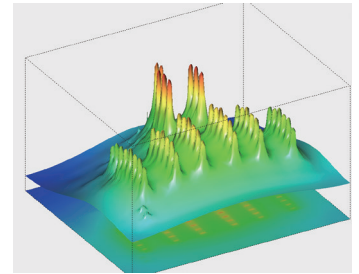
Regional Support - Keysight EDA regional technical support teams specialize in ADS. Teams are staffed with highly trained engineers; most have extensive design experience and hold advanced engineering degrees. Whether it's a complex circuit or application problem, your call is routed to a specialist whose goal is to get you back to work as quickly as possible.

Online Support - Our Knowledge Center is an around-the-clock resource for designers. It contains thousands of support documents and hundreds of downloadable examples created by our support and application engineers to supplement the examples and documentation supplied with the software. Software updates to previously released software versions are available for download. You can submit and manage online support cases and any related defect and enhancement requests.

New technologies to enhance your design

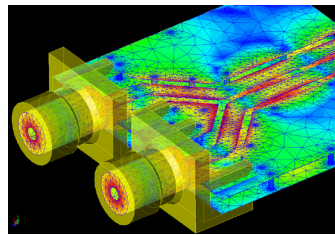


Power Integrity

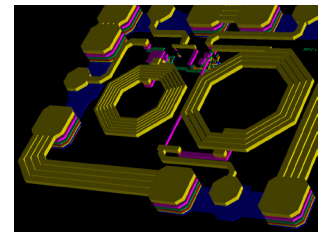


Electrothermal

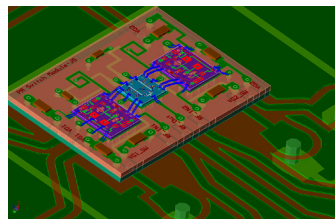
New features to improve your productivity



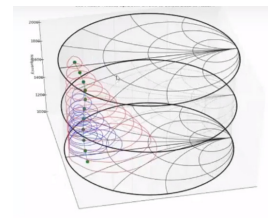
Integrated EM



3D layout

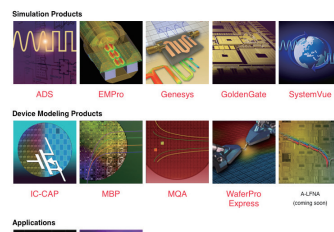


Multi-technology



Python data links

Benefit from Keysight's deep product knowledge



Online Knowledge Center



Regional expertise

Don't Miss Out On ADS' Many New Technologies, Features, Usability and Speed Enhancements

ADS 2017

- 3D Layout Viewing, Routing, and Editing
- Multi-Technology 3D Electrothermal Simulation
- 3D Data Visualization with a Python Data Link
- More Powerful 3D EM Simulation with FEM
- 3D Via Designer: Enabling Access to Accurate Via Models
- Automated PCell Construction for Coils and More
- New Option for Hierarchy Management
- Improved Interoperability
- SOA Support for Better Reliability
- Enhanced Circuit Simulation Performance
- PIPro - DC Electro-Thermal Simulation for PDNs
- PIPro - Bill of Materials Optimizer for Decaps and Inductors
- 3D Via Designer: Enabling Access to Accurate Parameterized Differential Via Models
- IBIS Model Usability Improvement and new IBIS Package Model Component
- Significantly Improved Transient and Channel Simulation Speed for Batch Simulations and for use of High-Port Count S-parameters
- Statistical Channel Sim Updated to support PAM4 IBIS-AMI Models
- Substrate Editing in a Table-Based View

ADS 2016

- SIPro: SI-focused EM simulator delivers high-accuracy for high-complexity PCB applications
- PIPro: PI-focused suite of EM simulators for analysis of PDNs
- Direct layout import from Cadence Allegro .BRD file
- Pulsed Amplitude Modulation (PAM-4) signaling supported in IBIS-AMI Channel Simulation
- DDR4 Bus Simulator support for Receiver Equalization
- Channel Simulator supports mix and match IBIS-AMI models with IBIS, SPICE and built-in Tx/Rx models
- New S-parameter Checker/Viewer
- Improved Harmonic Balance and Circuit Envelope: Faster, better convergence, improved accuracy
- Electro-Thermal simulation now runs on Windows
- Momentum: Parameterized substrates, TSMC iRCX import support, Via simplification, Dummy Metal Fills
- Layout: Numerous usability improvements for RF PCB/laminates, Silicon Dummy metal fill utility
- Silicon RFIC interoperability: Config Views, Verilog-A, Schematic Pcells & schematic area pins, iPDK PyCell
- New W2383EP/ET 5G Advanced Modem and Updated W2385EP/ET Wireless Networking (BTLE 4.0)

ADS 2016 Update 1

- New Mesh Domain Optimization (MDO) technology brings a 5x-20x improvement in simulation time for SIPro, plus a 2x reduction in memory used for PI-AC analysis
- SIPro improved via modeling under default settings and non-functional via pads now removed by default
- Automated assignment of component part values, taken from component name
- New 'Performance Visualization Mode'
- IBIS-AMI Channel simulation can now output the pulse response (Single-Bit response) for the channel

ADS 2015

- New W2309 DDR Bus Simulator
- Silicon RFIC Interoperability with Virtuoso Enhancements
- GoldenGate-in-ADS and New RFIC Cockpit
- 2-16x Faster FEM Simulation Performance Improvements
- Numerous Layout and Layout Verification, Usability, Performance and Productivity Improvements

ADS 2014

- Automatic EM/Circuit Simulation Setup and Partitioning
- New Physical LVS with Device Recognition
- New Wireless Verification Test Benches (LTE-A, LTE, 802.11ac)
- Improved Layout Interconnect Design and Editing
- Controlled Impedance Line Designer
- Silicon RFIC Schematic Interoperability with Virtuoso
- ADS Board Link - Next Generation PCB Integration Solution
- Simulation Support for DynaFET model

www.keysight.com

www.keysight.com/find/eesof-support

USA: (800) 829-4444

For more information on Keysight Technologies' products, applications or services, please contact your local Keysight office. The complete list is available at:

www.keysight.com/find/contactus