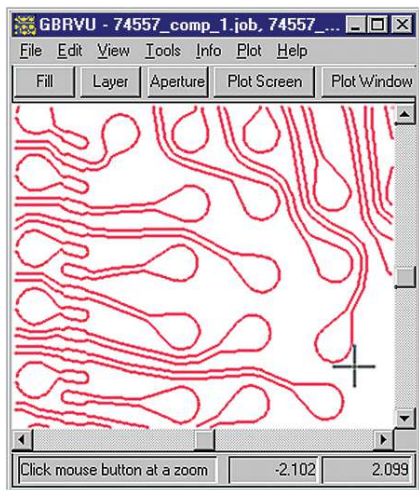
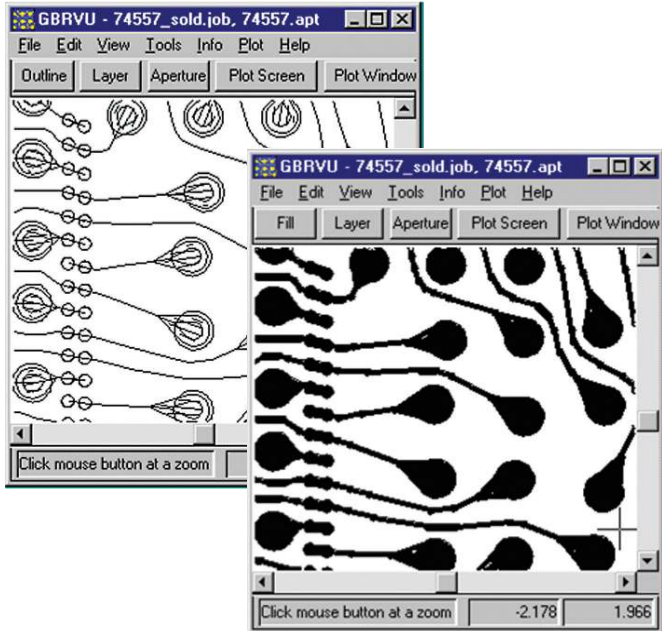


Keysight Technologies

EEsof EDA

W2322 Gerber Union Element



The Gerber Union import and translation tool processes all touching or overlapping layout data to produce clean contours for efficient electromagnetic analysis.

The Gerber Union Element W2322 is a Gerber file format layout import and translation tool to produce clean layout for full 3D and planar electromagnetic (EM) simulation. It is integrated with Advanced Design System (ADS), the only design simulation platform that enables the co-design of IC, package, and board in high-frequency and high-speed applications. ADS seamlessly integrates system, circuit, and full 3D electromagnetic simulation with the Keysight Technologies, Inc. test instrumentation, resulting in repeatable, first-pass electronic design success.

The W2322 Gerber Union Element was specifically created to convert layout Gerber files by performing union operation on strokes, flashes and areas into ADS native EGS format layouts with no overlapping or touching boundaries. These cleaned layouts can then be efficiently meshed using Keysight's 3D planar EM simulator (Momentum G2 W2341) or full 3D EM simulator (EMDS G2 W2342) for the fastest simulation.

The Gerber Union Element has the following capabilities:

- Efficient meshing for EM simulation, by following the contours of Gerber vector data and converting it into polygons with no overlapping or touching boundaries.
- Reads multiple Gerber files into a single database for multilayer layout.
- Exports multi-layer EGS archive format for transfer into ADS.
- Resultant ADS layout database accurately captures multi-layer structure and complex filled areas for subsequent EM simulation.
- Accepts Gerber files (274x) from any board or RF module layout tool.
- Imports entire image or selected area for critical net simulation.

Unlike general purpose Gerber file import tools, the Gerber Union element was specifically developed to create a multi-layer layout database in ADS from multiple Gerber files. It optimizes the layout for efficient meshing and the fastest EM simulation with Momentum G2 planar 3D and EMDS G2 full 3DEM simulators.

www.keysight.com/find/eesof-ads
www.keysight.com/find/eesof

For more information on Keysight Technologies' products, applications or services, please contact your local Keysight office. The complete list is available at: www.keysight.com/find/contactus

This information is subject to change without notice.
© Keysight Technologies, 2009 - 2014
Published in USA, July 31, 2014
5990-3846EN
www.keysight.com