
Keysight 85052D 3.5 mm Economy Calibration Kit

This is the User's and Service Guide, p/n 85052-90079 for the 85052D 3.5 mm Economy Calibration Kit.

Notices

© Keysight Technologies, Inc.
2014-2023

No part of this manual may be reproduced in any form or by any means (including electronic storage and retrieval or translation into a foreign language) without prior agreement and written consent from Keysight Technologies, Inc. as governed by United States and international copyright laws.

Trademark Acknowledgments

n/a

Manual Part Number

85052-90079

Edition

Edition 2, April 2023

Printed in USA/Malaysia

Published by:
Keysight Technologies
1400 Fountaingrove Parkway
Santa Rosa, CA 95403

Warranty

THE MATERIAL CONTAINED IN THIS DOCUMENT IS PROVIDED "AS IS," AND IS SUBJECT TO BEING CHANGED, WITHOUT NOTICE, IN FUTURE EDITIONS. FURTHER, TO THE MAXIMUM EXTENT PERMITTED BY APPLICABLE LAW, KEYSIGHT DISCLAIMS ALL WARRANTIES, EITHER EXPRESS OR IMPLIED WITH REGARD TO THIS MANUAL AND ANY INFORMATION CONTAINED HEREIN, INCLUDING BUT NOT LIMITED TO THE IMPLIED WARRANTIES OF MERCHANTABILITY AND FITNESS FOR A PARTICULAR PURPOSE. KEYSIGHT SHALL NOT BE LIABLE FOR ERRORS OR FOR INCIDENTAL OR CONSEQUENTIAL DAMAGES IN CONNECTION WITH THE FURNISHING, USE, OR PERFORMANCE OF THIS DOCUMENT OR ANY INFORMATION CONTAINED HEREIN. SHOULD KEYSIGHT AND THE USER HAVE A SEPARATE WRITTEN AGREEMENT WITH WARRANTY TERMS COVERING THE MATERIAL IN THIS

DOCUMENT THAT CONFLICT WITH THESE TERMS, THE WARRANTY TERMS IN THE SEPARATE AGREEMENT WILL CONTROL.

Technology Licenses

The hardware and/or software described in this document are furnished under a license and may be used or copied only in accordance with the terms of such license.

U.S. Government Rights

The Software is "commercial computer software," as defined by Federal Acquisition Regulation ("FAR") 2.101. Pursuant to FAR 12.212 and 27.405-3 and Department of Defense FAR Supplement ("DFARS") 227.7202, the U.S. government acquires commercial computer software under the same terms by which the software is customarily provided to the public. Accordingly, Keysight provides the Software to U.S. government customers under its standard commercial license, which is embodied in its End User License Agreement (EULA), a copy of which can be found at

<http://www.keysight.com/find/sweula>. The license set forth in the EULA represents the exclusive authority by which the U.S. government may use, modify, distribute, or disclose the Software. The EULA and the license set forth therein, does not require or permit, among other things, that Keysight: (1) Furnish technical information related to commercial computer software or commercial computer software documentation that is not customarily provided to the public; or (2) Relinquish to, or otherwise provide, the government rights in excess of these rights customarily provided to the public to use, modify, reproduce, release, perform, display, or disclose commercial computer software or commercial computer software documentation. No additional government requirements beyond those set forth in the EULA shall apply, except to the extent that those terms, rights, or licenses are explicitly required from all providers of commercial computer software pursuant to the FAR and the DFARS and are set forth specifically in

writing elsewhere in the EULA. Keysight shall be under no obligation to update, revise or otherwise modify the Software. With respect to any technical data as defined by FAR 2.101, pursuant to FAR 12.211 and 27.404.2 and DFARS 227.7102, the U.S. government acquires no greater than Limited Rights as defined in FAR 27.401 or DFAR 227.7103-5 (c), as applicable in any technical data.

Safety Notices

CAUTION

A **CAUTION** notice denotes a hazard. It calls attention to an operating procedure, practice, or the like that, if not correctly performed or adhered to, could result in damage to the product or loss of important data. Do not proceed beyond a CAUTION notice until the indicated conditions are fully understood and met.

WARNING

A **WARNING** notice denotes a hazard. It calls attention to an operating procedure, practice, or the like that, if not correctly performed or adhered to, could result in personal injury or death. Do not proceed beyond a WARNING notice until the indicated conditions are fully understood and met.

NOTE

A **NOTE** calls the user's attention to an important point or special information in the text.

1. General Information

Calibration Kit Overview 1-1

 Kit Contents 1-1

 Broadband Loads 1

 Offset Opens and Shorts 1

 Adapters 2

 Calibration Definitions 1-2

 Equipment Required but Not Supplied 1-2

Incoming Inspection 1-2

Recording the Device Serial Numbers 1-3

Calibration Kits Documented in This Manual 1-3

 Calibration Kit History 1-3

 85052D Kits with Serial Prefix 3027A 1-4

Precision Slotless Connectors 1-4

Clarifying the Terminology of a Connector Interface 1-5

Preventive Maintenance 1-5

When to Calibrate 1-6

2. Specifications

Environmental Requirements 2-1

 Temperature—What to Watch Out For 2-1

Mechanical Characteristics 2-2

 Pin Depth 2-2

Electrical Specifications 2-4

 Certification 2-4

3. Use, Maintenance, and Care of the Devices

Electrostatic Discharge 3-1

Visual Inspection 3-3

 Look for Obvious Defects and Damage First 3-3

 What Causes Connector Wear? 3

 Inspect the Mating Plane Surfaces 3-3

 Inspect Female Connectors 3-4

Cleaning Connectors 3-4

Gaging Connectors 3-6

 Connector Gage Accuracy 3-6

 When to Gage Connectors 3-7

 Gaging Procedures 3-7

 Gaging 3.5 mm Connectors 7

Connections 3-10

Contents

How to Make a Connection	3-10
Preliminary Connection	10
Final Connection Using a Torque Wrench	11
How to Separate a Connection	3-12
Handling and Storage	3-13
4. Performance Verification	
Introduction	4-1
How Keysight Verifies the Devices in Your Kit.	4-1
Recertification	4-2
How Often to Recertify	4-2
Where to Send a Kit for Recertification	4-2
5. Troubleshooting	
Troubleshooting Process	5-1
Where to Look for More Information	5-2
Returning a Kit or Device to Keysight	5-2
Contacting Keysight	5-3
Printing Copies of the Documentation on the Web	5-3
6. Replaceable Parts	
Introduction	6-1
A.:Standard Definitions	
Class Assignments and Standard Definitions Values are Available on the Web	A-1

1 General Information

Calibration Kit Overview

The Keysight 85052D 3.5 mm calibration kit is used to calibrate Keysight network analyzers up to 26.5 GHz for measurements of components with 3.5-mm connectors.

Kit Contents

The 85052D calibration kit includes the following items:

- user's and service guide
- offset opens and shorts, and broadband loads
- three 3.5 mm adapters
- 5/16 in, 90 N-cm (8 in-lb) torque wrench
- 7 mm open-end wrench

The adapters are primarily intended for use in measuring non-insertable devices, but can also be used as a connector saver.

Refer to **Chapter 6** for a complete list of kit contents and their associated part numbers.

Broadband Loads

The broadband loads are metrology-grade terminations that have been optimized for performance up to 26.5 GHz. The rugged internal structure provides for highly repeatable connections. A distributed resistive element on sapphire provides excellent stability and return loss.

Offset Opens and Shorts

The offset opens and shorts are built from parts that are machined to the current state-of-the-art in precision machining.

The offset short's inner conductors have a one-piece construction, common with the shorting plane. The construction provides for extremely repeatable connections.

The offset opens have inner conductors that are supported by a strong, low-dielectric constant plastic to minimize compensation values.

Both the opens and shorts are constructed so that the pin depth can be controlled very tightly, thereby minimizing phase errors. The lengths of the offsets in the opens and shorts are designed so that the difference in phase of their reflection coefficients is approximately 180 degrees at all frequencies.

Adapters

Like the other devices in the kit, the adapters are built to very tight tolerances to provide good broadband performance and to ensure stable, repeatable connections.

The adapters are designed so that their nominal electrical lengths are the same, which allows them to be used in calibration procedures for non-insertable devices.

Calibration Definitions

The calibration kit must be selected and the calibration definitions for the devices in the kit installed in the network analyzer prior to performing a calibration.

The calibration definitions can be:

- resident within the analyzer
- manually entered from the front panel

Class assignments and standard definitions may change as more accurate model and calibration methods are developed. You can download the most recent class assignments and standard definitions from Keysight's Calibration Kit Definitions Web page at

<https://www.keysight.com/us/en/assets/9922-01521/technical-specifications/Calibration-Kit-Definitions.pdf>.

Refer to your network analyzer user's guide or embedded Help for instructions on manually entering calibration definitions, selecting the calibration kit, and performing a calibration.

Equipment Required but Not Supplied

Some items are required or recommended for successful operation of your kit, but are not supplied with the kit. Refer to **Table 6-2 on page 6-3** for a list of these items and for ordering information.

Incoming Inspection

Refer to **Chapter 6** to verify a complete shipment. Use **Table 1-1** to record the serial numbers of all serialized devices in your kit.

Check for damage. The foam-lined storage case provides protection during shipping. If the case or any device appears damaged, or if the shipment is incomplete, refer to **“Contacting Keysight” on page 5-3**. Keysight will arrange for repair or replacement of incomplete or damaged shipments without waiting for a settlement from the transportation company. See **“Returning a Kit or Device to Keysight” on page 5-2**.

Recording the Device Serial Numbers

In addition to the kit serial number, the devices in the kit are individually serialized (serial numbers are labeled onto the body of each device). Record these serial numbers in

Table 1-1. Recording the serial numbers will prevent confusing the devices in this kit with similar devices from other kits.

The adapters included in the kit are for measurement convenience only and are not serialized.

Table 1-1 **Serial Number Record for the 85052D**

Device	Serial Number
Calibration kit	_____
Broadband load -m-	_____
Broadband load -f-	_____
Open -m-	_____
Open -f-	_____
Short -m-	_____
Short -f-	_____

Calibration Kits Documented in This Manual

This manual applies to any 8552B calibration kit with serial number prefix 3106A. If your calibration kit has a different serial number prefix, refer to the next section for information on how this manual applies.

Calibration Kit History

This section describes calibration kits with serial number prefixes lower than the ones listed on the title page.

85052D Kits with Serial Prefix 3027A

These calibration kits did not have a calibration constants disk to support the Keysight 8510C network analyzer. The part numbers provided in this manual are the recommended replacement parts for these kits. The devices in these kits should meet the specifications published in this manual.

Precision Slotless Connectors

The female 3.5 mm connectors in this calibration kit are metrology-grade, precision slotless connectors (PSC). A characteristic of metrology-grade connectors is direct traceability to national measurement standards through their well-defined mechanical dimensions.

Conventional female center conductors are slotted. When mated, the female center conductor is flared by the male pin. Because physical dimensions determine connector impedance, electrical characteristics of the female connector (and connection pair) are dependent upon the mechanical dimensions of the male pin. While connectors are used in pairs, their male and female halves are always specified separately as part of a standard, instrument, or device under test. Because of these facts, making precision measurements with the conventional slotted connector is very difficult, and establishing a direct traceability path to primary dimensional standards is nearly impossible.

The precision slotless connector was developed to eliminate these problems. All PSCs are female. A PSC incorporates a center conductor with a solid cylindrical shell that defines the outside diameter of the female center pin. Its outside diameter and, therefore, the impedance in its region does not change. The inner part provides an internal contact that flexes to accept the allowed range of male pin diameters.

The calibration of a network analyzer having a conventional slotted female connector on the test port remains valid only when the device under test and all calibration standards have identical male pin diameters. For this reason PSC test port adapters are supplied in most calibration kits.

Precision slotless connectors have the following characteristics:

- There is no loss of traceable calibration on test ports when the male pin diameter of the connector on the device under test is different from the male pin diameter of the calibration standard.
- The female PSC and its mating male connector can be measured and specified separately as part of the device either is attached to.
- All female connectors can have a known, stable impedance based only on the diameters of their inner and outer conductors.
- Female calibration standards can be fully specified. Their specifications and traceability are unaffected by the diameter of the male mating pin.

General Information
Clarifying the Terminology of a Connector Interface

- A fully traceable performance verification is made using a precision 50 ohm airline having a PSC.
- Measurement repeatability is enhanced due to non-changing connector characteristics with various pin diameters.

With PSCs on test ports and standards, the percentage of accuracy achieved when measuring at 50 dB return loss levels is comparable to using conventional slotted connectors measuring devices having only 30 dB return loss. This represents an accuracy improvement of about 10 times.

Clarifying the Terminology of a Connector Interface

In this document and in the prompts of the PNA calibration wizard, the gender of cable connectors and adapters is referred to in terms of the center conductor. For example, a connector or device designated as 1.85 mm –f– has a 1.85 mm female center conductor.

8510-series, 872x, and 875x ONLY: In contrast, during a measurement calibration, the network analyzer softkey menus label a 1.85 mm calibration device with reference to the sex of the analyzer's test port connector—not the calibration device connector. For example, the label SHORT (F) refers to the short that is to be connected to the female test port. This will be a male short from the calibration kit.

Table 1-2 Clarifying the Sex of Connectors: Examples

Terminology	Meaning
Short –f–	Female short (female center conductor)
Short (f)	Male short (male center conductor) to be connected to female port

A connector gage is referred to in terms of the connector that it measures. For instance, a male connector gage has a female connector on the gage so that it can measure male devices.

Preventive Maintenance

The best techniques for maintaining the integrity of the devices in the kit include:

- routine visual inspection
- cleaning
- proper gaging
- proper connection techniques

All of these are described in [Chapter 3](#). Failure to detect and remove dirt or metallic particles on a mating plane surface can degrade repeatability and accuracy and can damage any connector mated to it. Improper connections, resulting from pin depth values being out of the observed limits (see [Table 2-2 on page 2-3](#)) or from bad connection techniques, can also damage these devices.

When to Calibrate

A network analyzer calibration remains valid as long as the changes in the systematic error are insignificant. This means that changes to the uncorrected leakages (directivity and isolation), mismatches (source match and load match), and frequency response of the system are small (<10%) relative to accuracy specifications.

Change in the environment (especially temperature) between calibration and measurement is the major cause in calibration accuracy degradation. The major effect is a change in the physical length of external and internal cables. Other important causes are dirty and damaged test port connectors and calibration standards. If the connectors become dirty or damaged, measurement repeatability and accuracy is affected. Fortunately, it is relatively easy to evaluate the general validity of the calibration. To test repeatability, remeasure one of the calibration standards. If you can not obtain repeatable measurements from your calibration standards, maintenance needs to be performed on the test port connectors, cables and calibration standards. Also, maintain at least one sample of the device under test or some known device as your reference device. A verification kit may be used for this purpose. After calibration, measure the reference device and note its responses. Periodically remeasure the device and note any changes in its corrected response which can be attributed to the test system. With experience you will be able to see changes in the reference responses that indicate a need to perform the measurement calibration again.

2 Specifications

Environmental Requirements

Table 2-1 Environmental Requirements

Parameter	Limits
Temperature	
Operating ^a	+20 °C to +26 °C
Storage	-40 °C to +75 °C
Error-corrected range ^b	± 1 °C of measurement calibration temperature
Relative humidity	Type tested 0% to 95% at 40 °C, non-condensing

- a. The temperature range over which the calibration standards maintain conformance to their specifications.
b. The allowable network analyzer ambient temperature drift during measurement calibration and during measurements when the network analyzer error correction is turned on. Also, the range over which the network analyzer maintains its specified performance while correction is turned on.

Temperature—What to Watch Out For

Changes in temperature can affect electrical characteristics. Therefore, the operating temperature is a critical factor in performance. During a measurement calibration, the temperature of the calibration devices must be stable and within the range shown in

Table 2-1.

NOTE

IMPORTANT!

Avoid unnecessary handling of the devices during calibration because your fingers are a heat source.

Mechanical Characteristics

Mechanical characteristics such as center conductor protrusion and pin depth are not performance specifications. They are, however, important supplemental characteristics related to electrical performance. Keysight Technologies verifies the mechanical characteristics of the devices in the kit with special gaging processes and electrical testing. This ensures that the device connectors do not exhibit any center conductor protrusion or improper pin depth when the kit leaves the factory.

“Gaging Connectors” on page 3-6 explains how to use gages to determine if the kit devices have maintained their mechanical integrity. Refer to **Table 2-2** for typical and observed pin depth limits.

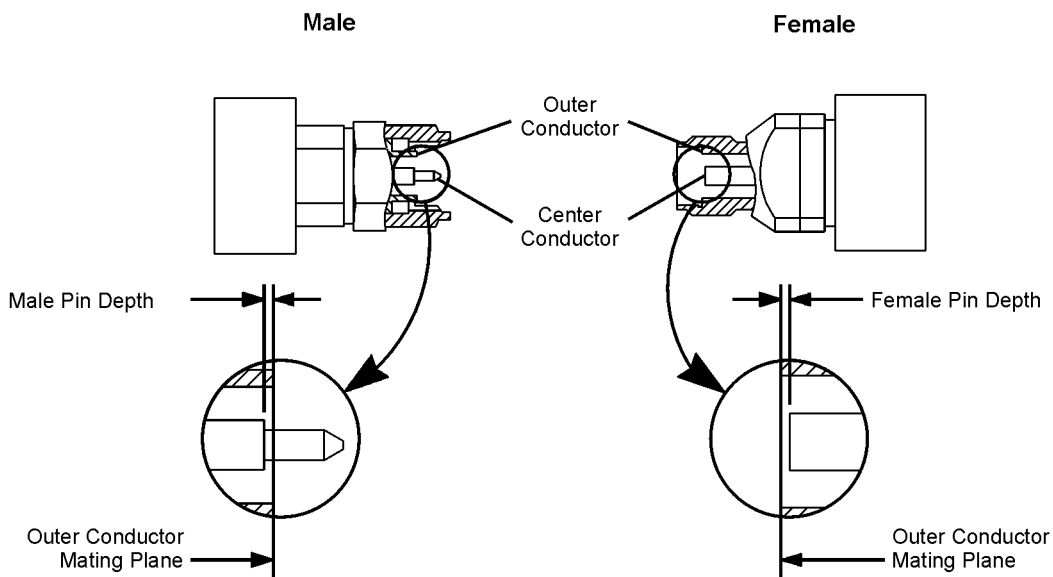
Pin Depth

Pin depth is the distance the center conductor mating plane differs from being flush with the outer conductor mating plane. See **Figure 2-1**. The pin depth of a connector can be in one of two states: either protruding or recessed.

Protrusion is the condition in which the center conductor extends beyond the outer conductor mating plane. This condition will indicate a positive value on the connector gage.

Recession is the condition in which the center conductor is set back from the outer conductor mating plane. This condition will indicate a negative value on the connector gage.

Figure 2-1 Connector Pin Depth



The pin depth value of each calibration device in the kit is not specified, but is an important mechanical parameter. The electrical performance of the device depends, to some extent, on its pin depth. The electrical specifications for each device in the kit take into account the effect of pin depth on the device's performance. **Table 2-2** lists the typical pin depths and measurement uncertainties, and provides observed pin depth limits for the devices in the kit. If the pin depth of a device does not measure within the **observed** pin depth limits, it may be an indication that the device fails to meet electrical specifications. Refer to **Figure 2-1** for a visual representation of proper pin depth (slightly recessed).

Table 2-2 Pin Depth Limits

Device	Typical Pin Depth	Measurement Uncertainty ^a	Observed Pin Depth Limits ^b
Opens	0 to -0.0127 mm 0 to -0.00050 in	+0.0064 to -0.0064 mm +0.00025 to -0.00025 in	+0.0064 to -0.0191 mm +0.00025 to -0.00075 in
Shorts	0 to -0.0127 mm 0 to -0.00050 in	+0.0041 to -0.0041 mm +0.00016 to -0.00016 in	+0.0041 to -0.0168 mm +0.00016 to -0.00066 in
Fixed loads	-0.0025 to -0.0254 mm -0.0001 to -0.0010 in	+0.0041 to -0.0041 mm +0.00016 to -0.00016 in	+0.0016 to -0.0295 mm +0.00006 to -0.00116 in
Adapter	-0.0025 to -0.0254 mm -0.0001 to -0.0010 in	+0.0041 to -0.0041 mm +0.00016 to -0.00016 in	+0.0016 to -0.0295 mm +0.00006 to -0.00116 in

- a. Approximately +2 sigma to -2 sigma of gage uncertainty based on studies done at the factory according to recommended procedures.
- b. Observed pin depth limits are the range of observation limits seen on the gage reading due to measurement uncertainty. The depth could still be within specifications.

Electrical Specifications

The electrical specifications in **Table 2-3** apply to the devices in your calibration kit when connected with a Keysight precision interface.

Table 2-3 Electrical Specifications for 85052D 3.5 mm Devices

Device	Specification	Frequency (GHz)
Broadband loads (male and female)	Return loss ≥ 46 dB ($\rho \leq 0.00501$)	dc to ≤ 2
	Return loss ≥ 44 dB ($\rho \leq 0.00631$)	> 2 to ≤ 3
	Return loss ≥ 38 dB ($\rho \leq 0.01259$)	> 3 to ≤ 8
	Return loss ≥ 36 dB ($\rho \leq 0.01585$)	> 8 to ≤ 20
	Return loss ≥ 34 dB ($\rho \leq 0.01995$)	> 20 to ≤ 26.5
Offset opens ^a (male and female)	$\pm 0.65^\circ$ deviation from nominal	dc to ≤ 3
	$\pm 1.20^\circ$ deviation from nominal	> 3 to ≤ 8
	$\pm 2.00^\circ$ deviation from nominal	> 8 to ≤ 20
	$\pm 2.00^\circ$ deviation from nominal	> 20 to ≤ 26.5
Offset shorts ^a (male and female)	$\pm 0.50^\circ$ deviation from nominal	dc to ≤ 3
	$\pm 1.00^\circ$ deviation from nominal	> 3 to ≤ 8
	$\pm 1.75^\circ$ deviation from nominal	> 8 to ≤ 20
	$\pm 1.75^\circ$ deviation from nominal	> 20 to ≤ 26.5
Adapters ^b	Return loss ≥ 30 dB ($\rho \leq 0.03162$)	dc to ≤ 8
	Return loss ≥ 28 dB ($\rho \leq 0.03981$)	> 8 to ≤ 18
	Return loss ≥ 26 dB ($\rho \leq 0.05012$)	> 18 to ≤ 26.5

a. The specifications for the opens and shorts are given as allowed deviation from the nominal model as defined in the standard definitions.

b. The offset delay value is 94.75 psec.

Certification

Keysight Technologies certifies that this product met its published specifications at the time of shipment from the factory. Keysight further certifies that its calibration measurements are traceable to the United States National Institute of Standards and Technology (NIST) to the extent allowed by the Institute's calibration facility, and to the calibration facilities of other International Standards Organization members. See **“How Keysight Verifies the Devices in Your Kit” on page 4-1** for more information.

3 Use, Maintenance, and Care of the Devices

Electrostatic Discharge

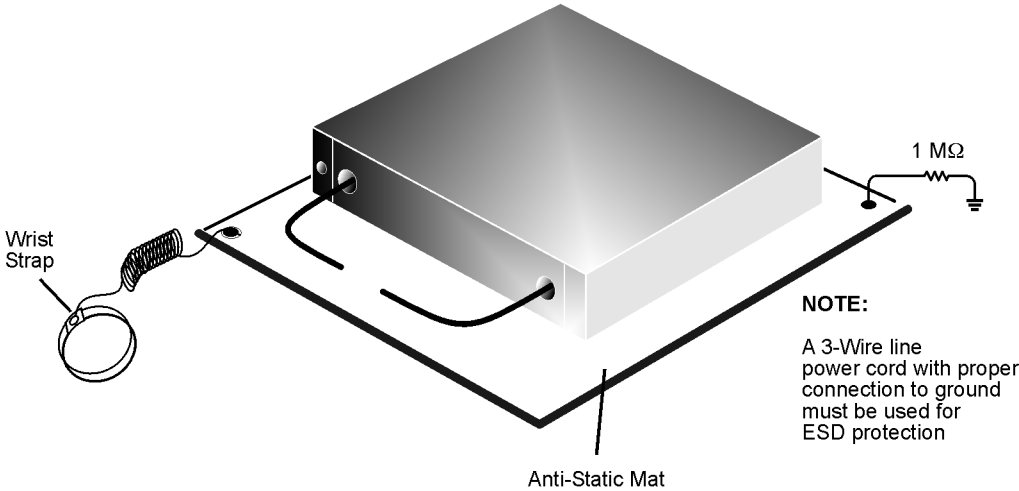
Protection against electrostatic discharge (ESD) is essential while connecting, inspecting, or cleaning connectors attached to a static-sensitive circuit (such as those found in test sets).

Static electricity can build up on your body and can easily damage sensitive internal circuit elements when discharged. Static discharges too small to be felt can cause permanent damage. Devices such as calibration components and devices under test (DUT), can also carry an electrostatic charge. To prevent damage to the test set, components, and devices:

- **always** wear a grounded wrist strap having a 1 M Ω resistor in series with it when handling components and devices or when making connections to the test set.
- **always** use a grounded, conductive table mat while making connections.
- **always** wear a heel strap when working in an area with a conductive floor. If you are uncertain about the conductivity of your floor, wear a heel strap.
- **always** ground yourself before you clean, inspect, or make a connection to a static-sensitive device or test port. You can, for example, grasp the grounded outer shell of the test port or cable connector briefly.
- **always** ground the center conductor of a test cable before making a connection to the analyzer test port or other static-sensitive device. This can be done as follows:
 1. Connect a short (from your calibration kit) to one end of the cable to short the center conductor to the outer conductor.
 2. While wearing a grounded wrist strap, grasp the outer shell of the cable connector.
 3. Connect the other end of the cable to the test port.
 4. Remove the short from the cable.

Figure 3-2 shows a typical ESD protection setup using a grounded mat and wrist strap. Refer to **Table 6-2 on page 6-3** for information on ordering supplies for ESD protection.

Figure 3-1 ESD Protection Setup



Visual Inspection

Visual inspection and, if necessary, cleaning should be done every time a connection is made. Metal particles from the connector threads may fall into the connector when it is disconnected. One connection made with a dirty or damaged connector can damage both connectors beyond repair.

Magnification is helpful when inspecting connectors, but it is not required and may actually be misleading. Defects and damage that cannot be seen without magnification generally have no effect on electrical or mechanical performance. Magnification is of great use in analyzing the nature and cause of damage and in cleaning connectors, but it is not required for inspection.

Look for Obvious Defects and Damage First

Examine the connectors first for obvious defects and damage: badly worn plating on the connector interface, deformed threads, or bent, broken, or misaligned center conductors. Connector nuts should move smoothly and be free of burrs, loose metal particles, and rough spots.

What Causes Connector Wear?

Connector wear is caused by connecting and disconnecting the devices. The more use a connector gets, the faster it wears and degrades. The wear is greatly accelerated when connectors are not kept clean, or are not connected properly.

Connector wear eventually degrades performance of the device. Calibration devices should have a long life if their use is on the order of a few times per week. Replace devices with worn connectors.

The test port connectors on the network analyzer test set may have many connections each day, and are, therefore, more subject to wear. It is recommended that an adapter be used as a test port saver to minimize the wear on the test set's test port connectors.

Inspect the Mating Plane Surfaces

Flat contact between the connectors at all points on their mating plane surfaces is required for a good connection. See **Figure 2-1 on page 2-2**. Look especially for deep scratches or dents, and for dirt and metal particles on the connector mating plane surfaces. Also look for signs of damage due to excessive or uneven wear or misalignment.

Light burnishing of the mating plane surfaces is normal, and is evident as light scratches or shallow circular marks distributed more or less uniformly over the mating plane surface. Other small defects and cosmetic imperfections are also normal. None of these affect electrical or mechanical performance.

If a connector shows deep scratches or dents, particles clinging to the mating plane surfaces, or uneven wear, clean and inspect it again. Devices with damaged connectors should be discarded. Determine the cause of damage before connecting a new, undamaged connector in the same configuration.

Inspect Female Connectors

Inspect the contact fingers in the female center conductor carefully. These can be bent or broken, and damage to them is not always easy to see. A connector with damaged contact fingers will not make good electrical contact and must be replaced.

NOTE

This is particularly important when mating nonprecision to precision devices.

The female 3.5 mm connectors in this calibration kit are metrology-grade, precision slotless connectors (PSC). Precision slotless connectors are used to improve accuracy. With PSCs on test ports and standards, the accuracy achieved when measuring at 50 dB return loss levels is comparable to using conventional slotted connectors measuring devices having only 30 dB return loss. This represents an accuracy improvement of about 10 times.

Conventional female center conductors are slotted and, when mated, are flared by the male pin. Because physical dimensions determine connector impedance, this change in physical dimension affects electrical performance, making it very difficult to perform precision measurements with conventional slotted connectors.

The precision slotless connector was developed to eliminate this problem. The PSC has a center conductor with a solid cylindrical shell, the outside diameter of which does not change when mated. Instead, this center conductor has an internal contact that flexes to accept the male pin.

Cleaning Connectors

Clean connectors are essential for ensuring the integrity of RF and microwave coaxial connections.

1. Use Compressed Air or Nitrogen

WARNING

Always use protective eyewear when using compressed air or nitrogen.

Use compressed air (or nitrogen) to loosen particles on the connector mating plane surfaces. Clean air cannot damage a connector or leave particles or residues behind.

You can use any source of clean, dry, low-pressure compressed air or nitrogen that has an effective oil-vapor filter and liquid condensation trap placed just before the outlet hose.

Ground the hose nozzle to prevent electrostatic discharge, and set the air pressure to less than 414 kPa (60 psi) to control the velocity of the air stream. High-velocity streams of compressed air can cause electrostatic effects when directed into a connector. These electrostatic effects can damage the device. Refer to “**Electrostatic Discharge**” earlier in this chapter for additional information.

2. Clean the Connector Threads

WARNING

Print Date: Keep isopropyl alcohol away from heat, sparks, and flame. Store in a tightly closed container. It is extremely flammable. In case of fire, use alcohol foam, dry chemical, or carbon dioxide; water may be ineffective.

Print Date: Use isopropyl alcohol with adequate ventilation and avoid contact with eyes, skin, and clothing. It causes skin irritation, may cause eye damage, and is harmful if swallowed or inhaled. It may be harmful if absorbed through the skin. Wash thoroughly after handling.

Print Date: In case of spill, soak up with sand or earth. Flush spill area with water.

Print Date: Dispose of isopropyl alcohol in accordance with all applicable federal, state, and local environmental regulations.

Use a lint-free swab or cleaning cloth moistened with isopropyl alcohol to remove any dirt or stubborn contaminants on a connector that cannot be removed with compressed air or nitrogen. Refer to **Table 6-2 on page 6-3** for a part number for cleaning swabs.

- a. Apply a small amount of isopropyl alcohol to a lint-free cleaning swab.
- b. Clean the connector threads.
- c. Let the alcohol evaporate, then blow the threads dry with a gentle stream of clean, low-pressure compressed air or nitrogen. Always completely dry a connector before you reassemble or use it.

3. Clean the Mating Plane Surfaces

- a. Apply a small amount of isopropyl alcohol to a lint-free cleaning swab.
- b. Clean the center and outer conductor mating plane surfaces. Refer to **Figure 2-1 on page 2-2**. When cleaning a female connector, avoid snagging the swab on the center conductor contact fingers by using short strokes.

- c. Let the alcohol evaporate, then blow the connector dry with a gentle stream of clean, low-pressure compressed air or nitrogen. Always completely dry a connector before you reassemble or use it.

4. Inspect

Inspect the connector to make sure that no particles or residue remain. Refer to [“Visual Inspection” on page 3-3](#).

Gaging Connectors

The gages available from Keysight Technologies are intended for preventive maintenance and troubleshooting purposes only. They are effective in detecting excessive center conductor protrusion or recession, and conductor damage on DUTs, test accessories, and the calibration kit devices. Do not use the gages for precise pin depth measurements. See [Table 6-2 on page 6-3](#) for part number information.

Connector Gage Accuracy

The connector gages are only capable of performing coarse measurements. They do not provide the degree of accuracy necessary to precisely measure the pin depth of the kit devices. This is partially due to the repeatability uncertainties that are associated with the measurement. Only the factory—through special gaging processes and electrical testing— can accurately verify the mechanical characteristics of the devices.

With proper technique, the gages are useful in detecting gross pin depth errors on device connectors. To achieve maximum accuracy, random errors must be reduced by taking the average of at least three measurements having different gage orientations on the connector. Even the resultant average can be in error by as much as ± 0.0001 inch due to systematic (biasing) errors usually resulting from worn gages and gage masters. The information in [Table 2-2 on page 2-3](#) assumes new gages and gage masters. Therefore, these systematic errors were not included in the uncertainty analysis. As the gages undergo more use, the systematic errors can become more significant in the accuracy of the measurement.

The measurement uncertainties in [Table 2-2](#) are primarily a function of the assembly materials and design, and the unique interaction each device type has with the gage. Therefore, these uncertainties can vary among the different devices. For example, note the difference between the uncertainties of the opens and shorts.

The observed pin depth limits in [Table 2-2](#) add these uncertainties to the typical factory pin depth values to provide practical limits that can be referenced when using the gages. See [“Pin Depth” on page 2-2](#). Refer to [“Kit Contents” on page 1-1](#) for more information on the design of the calibration devices in the kit.

NOTE

When measuring pin depth, the measured value (resultant average of three or more measurements) contains measurement uncertainty and is not necessarily the true value. Always compare the measured value with the observed pin depth limits (which account for measurement uncertainties) in [Table 2-2 on page 2-3](#) to evaluate the condition of device connectors.)

When to Gage Connectors

Gage a connector at the following times:

- Prior to using a device for the first time, record the pin depth measurement so that it can be compared with future readings. (It will serve as a good troubleshooting tool when you suspect damage may have occurred to the device.)
- If either visual inspection or electrical performance suggests that the connector interface may be out of typical range (due to wear or damage, for example).
- If a calibration device is used by someone else or on another system or piece of equipment.
- Initially, after every 100 connections, and after that, as often as experience indicates.

Gaging Procedures

Gaging 3.5 mm Connectors

NOTE

Always hold a connector gage by the gage barrel, below the dial indicator. This gives the best stability, and improves measurement accuracy. (Cradling the gage in your hand or holding it by the dial applies stress to the gage plunger mechanism through the dial indicator housing.)

1. Select the proper gage for your connector. Refer to [Table 6-1 on page 6-1](#) for gage part numbers.
2. Inspect and clean the gage, gage master, and device to be gaged. Refer to [“Visual Inspection”](#) and [“Cleaning Connectors”](#) earlier in this chapter.
3. Zero the connector gage (refer to [Figure 3-9](#)):

- a. While holding the gage by the barrel, and without turning the gage or the device, connect the gage to the gage master by interconnecting the male and female connectors. Connect the nut finger tight. Do not overtighten.
- b. Using an open-end wrench to keep the device body from rotating, use the torque wrench included in the kit to tighten the connecting nut to the specified torque. Refer to **“Final Connection Using a Torque Wrench” on page 3-11** for additional information.
- c. As you watch the gage pointer, gently tap the barrel of the gage to settle the reading.

The gage pointer should line up exactly with the zero mark on the gage. If not, adjust the zero set knob until the gage pointer lines up exactly with the zero mark.

- d. Remove the gage master.

4. Gage the device connector (refer to **Figure 3-9**):

- a. While holding the gage by the barrel, and without turning the gage or the device, connect the gage to the device by interconnecting the male and female connectors. Connect the nut finger-tight. Do not overtighten.
- b. Using an open-end wrench to keep the device body from rotating, use the torque wrench included in the kit to tighten the connecting nut to the specified torque. Refer to **“Final Connection Using a Torque Wrench” on page 3-11** for additional information.
- c. Gently tap the barrel of the gage with your finger to settle the gage reading.
- d. Read the gage indicator dial. Read **only** the black \pm signs; **not** the red \pm signs.

For maximum accuracy, measure the connector a minimum of three times and take an average of the readings. After each measurement, rotate the gage a quarter-turn to reduce measurement variations that result from the gage or the connector face not being exactly perpendicular to the center axis.

- e. Compare the average reading with the observed pin depth limits in **Table 2-2 on page 2-3**.

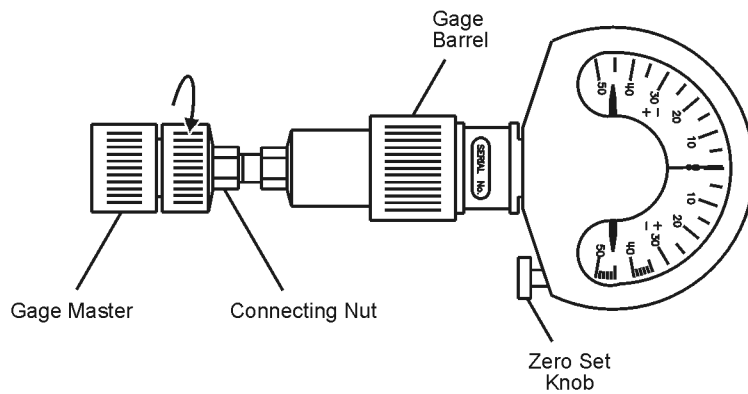
Figure 3-2 Gaging 3.5 mm Connectors

Note:

Although male devices are shown in this illustration, the procedure is essentially the same for female devices.

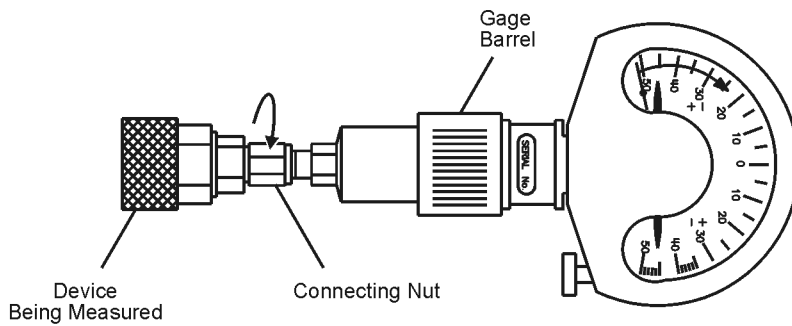
Zero the Connector Gage

- Connect the gage to the gage master.
- Torque the connecting nut.
- Gently tap the gage barrel to settle the reading.
- Using the zero set knob, adjust the gage pointer to line up exactly with the zero mark.
- Remove the gage master.



Gage the Device Connector

- Connect the gage to the device being measured.
- Torque the connecting nut.
- Gently tap the gage barrel to settle the reading.
- Read recession or protrusion from the gage.
- Remove the device.
- Repeat two additional times and average the three readings.



ph71a

Connections

Good connections require a skilled operator. **The most common cause of measurement error is bad connections.** The following procedures illustrate how to make good connections.

How to Make a Connection

Preliminary Connection

1. Ground yourself and all devices. Wear a grounded wrist strap and work on a grounded, conductive table mat. Refer to **“Electrostatic Discharge” on page 3-1** for ESD precautions.
2. Visually inspect the connectors. Refer to **“Visual Inspection” on page 3-3**.
3. If necessary, clean the connectors. Refer to **“Cleaning Connectors” on page 3-4**.
4. Use a connector gage to verify that all center conductors are within the observed pin depth values in **Table 2-2 on page 2-3**. Refer to **“Gaging Connectors” on page 3-6**.
5. Carefully align the connectors. The male connector center pin must slip concentrically into the contact finger of the female connector.
6. Push the connectors straight together and tighten the connector nut finger tight.

CAUTION

Do **not** turn the device body. Only turn the connector nut. Damage to the center conductor can occur if the device body is twisted.

Do **not** twist or screw the connectors together. As the center conductors mate, there is usually a slight resistance.

7. The preliminary connection is tight enough when the mating plane surfaces make uniform, light contact. Do not overtighten this connection.
A connection in which the outer conductors make gentle contact at all points on both mating surfaces is sufficient. Very light finger pressure is enough to accomplish this.
8. Make sure the connectors are properly supported. Relieve any side pressure on the connection from long or heavy devices or cables.

Final Connection Using a Torque Wrench

Use a torque wrench to make a final connection. [Table 3-1](#) provides information about the torque wrench recommended for use with the calibration kit. A torque wrench is included in the calibration kit. Refer to [Table 6-1 on page 6-1](#) for replacement part number and ordering information.

Table 3-1 Torque Wrench Information

Connector Type	Torque Setting	Torque Tolerance
3.5 mm	90 N-cm (8 in-lb)	± 9.0 N-cm (± 0.8 in-lb)

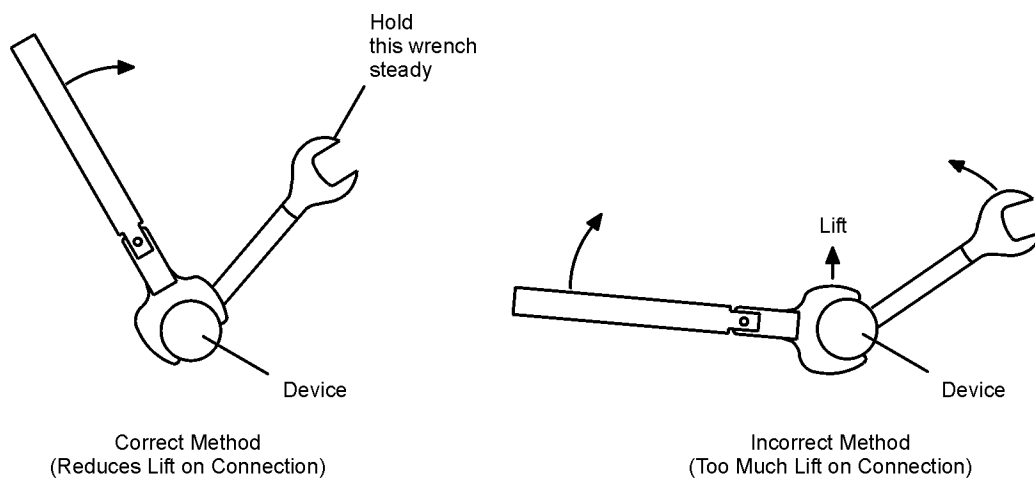
Using a torque wrench guarantees that the connection is not too tight, preventing possible connector damage. It also guarantees that all connections are equally tight each time.

Prevent the rotation of anything other than the connector nut that you are tightening. It may be possible to do this by hand if one of the connectors is fixed (as on a test port). However, it is recommended that you use an open-end wrench to keep the body of the device from turning.

1. Position both wrenches within 90 degrees of each other before applying force. See [Figure 3-11](#). Wrenches opposing each other (greater than 90 degrees apart) will cause a lifting action which can misalign and stress the connections of the devices involved. This is especially true when several devices are connected together.

Figure 3-3

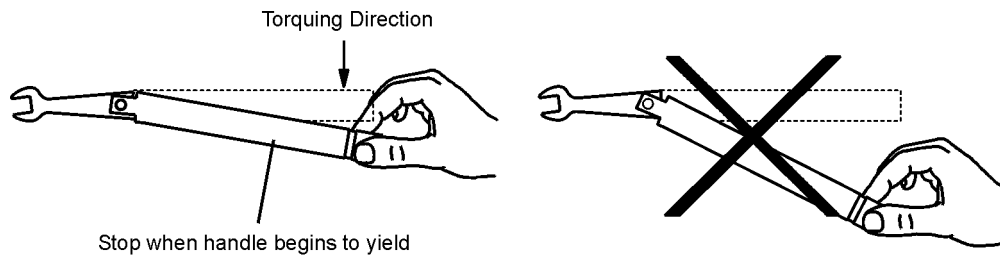
Wrench Positions



ph711a

2. Hold the torque wrench lightly, at the end of the handle only (beyond the groove). See [Figure 3-12](#).

Figure 3-4 Using the Torque Wrench



ph712a

3. Apply downward force perpendicular to the wrench handle. This applies torque to the connection through the wrench.
Do not hold the wrench so tightly that you push the handle straight down along its length rather than pivoting it; otherwise, you apply an unknown amount of torque.
4. Tighten the connection just to the torque wrench break point. The wrench handle gives way at its internal pivot point. See [Figure 3-4 on page 3-12](#). Do not tighten the connection further.

CAUTION

You don't have to fully break the handle of the torque wrench to reach the specified torque; doing so can cause the handle to kick back and loosen the connection. Any give at all in the handle is sufficient torque.

How to Separate a Connection

To avoid lateral (bending) force on the connector mating plane surfaces, always support the devices and connections.

CAUTION

Do **not** turn the device body. Only turn the connector nut. Damage to the center conductor can occur if the device body is twisted.

1. Use an open-end wrench to prevent the device body from turning.
2. Use another open-end wrench to loosen the connecting nut.
3. Complete the separation by hand, turning only the connecting nut.
4. Pull the connectors straight apart without twisting, rocking, or bending either of the connectors.

Handling and Storage

- Install the protective end caps and store the calibration devices in the foam-lined storage case when not in use.
- Never store connectors loose in a box, or in a desk or bench drawer. This is the most common cause of connector damage during storage.
- Keep connectors clean.
- Do not touch mating plane surfaces. Natural skin oils and microscopic particles of dirt are easily transferred to a connector interface and are very difficult to remove.
- Do not set connectors contact-end down on a hard surface. The plating and the mating plane surfaces can be damaged if the interface comes in contact with any hard surface.

Use, Maintenance, and Care of the Devices
Handling and Storage

4 Performance Verification

Introduction

The performance of your calibration kit can only be verified by returning the kit to Keysight Technologies for recertification. The equipment required to verify the specifications of the devices in the kit has been specially manufactured and is not commercially available.

How Keysight Verifies the Devices in Your Kit

Keysight verifies the specifications of these devices as follows:

- 1. The residual microwave error terms of the test system are verified with precision airlines and shorts that are directly traced to the National Institute of Standards and Technology (NIST). The airline and short characteristics are developed from mechanical measurements. The mechanical measurements and material properties are carefully modeled to give very accurate electrical representation. The mechanical measurements are then traced to NIST through various plug and ring gages and other mechanical measurements.**
- 2. Each calibration device is electrically tested on this system. For the initial (before sale) testing of the calibration devices, Keysight includes the test measurement uncertainty as a guardband to guarantee each device meets the published specification. For recertifications (after sale), no guardband is used and the measured data is compared directly with the specification to determine the pass or fail status. The measurement uncertainty for each device is, however, recorded in the calibration report that accompanies recertified kits.**

These two steps establish a traceable link to NIST for Keysight to the extent allowed by the Institute's calibration facility. The specifications data provided for the devices in the kit is traceable to NIST through Keysight Technologies.

Recertification

The following will be provided with a recertified kit:

- a new calibration sticker affixed to the case
- a certificate of calibration
- a calibration report for each device in the kit listing measured values, specifications, and uncertainties

NOTE

A list of NIST traceable numbers may be purchased upon request to be included in the calibration report.

Keysight Technologies offers a **Standard** calibration for the recertification of the kit. For more information, contact Keysight Technologies. Refer to **“Contacting Keysight” on page 5-3** for a list of offices.

How Often to Recertify

The suggested initial interval for recertification is 12 months or sooner. The actual need for recertification depends on the use of the kit. After reviewing the results of the initial recertification, you may establish a different recertification interval that reflects the usage and wear of the kit.

NOTE

The recertification interval should begin on the date the kit is first used after the recertification date.

Where to Send a Kit for Recertification

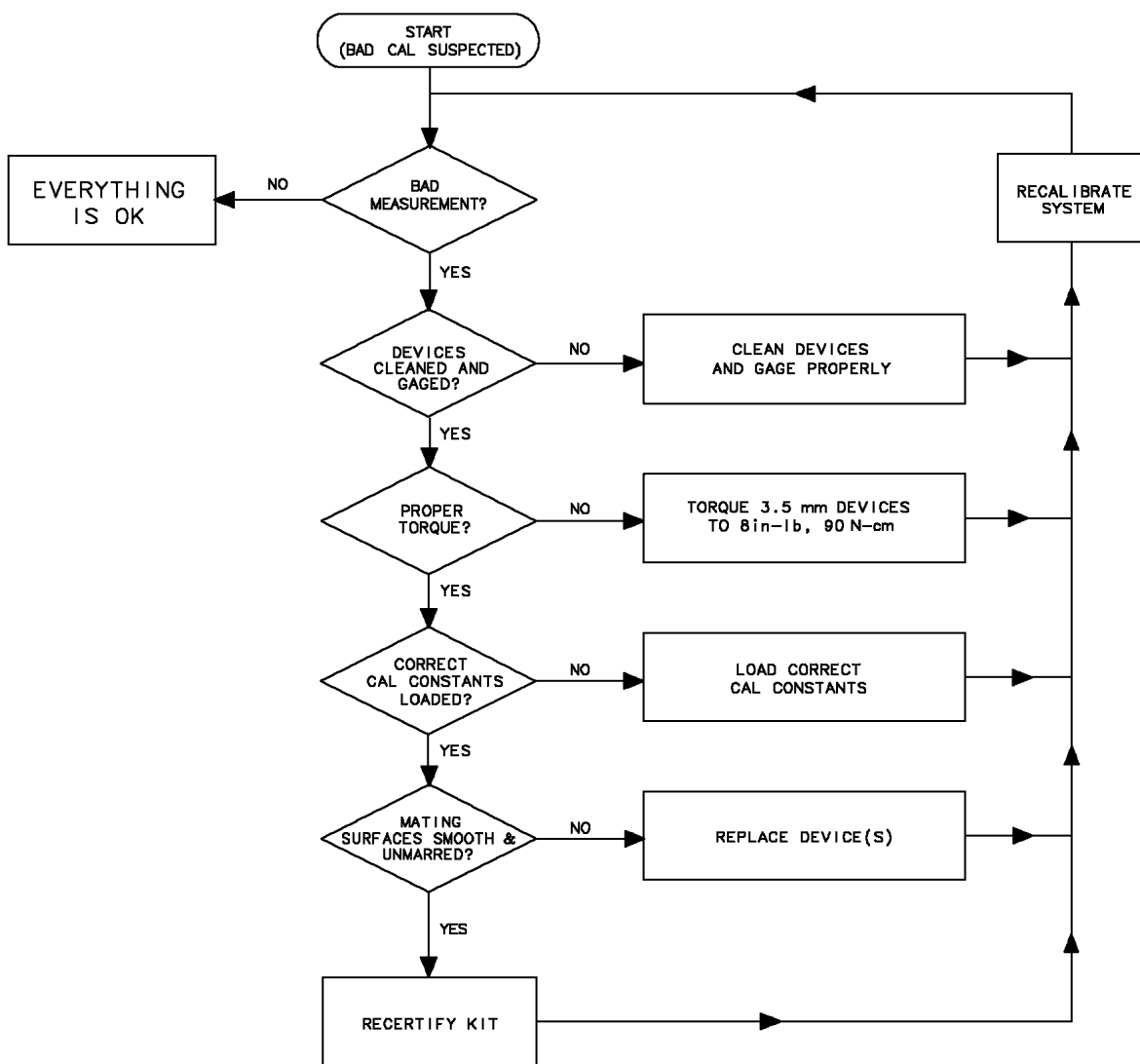
Contact Keysight Technologies for information on where to send your kit for recertification. Contact information is listed on **page 5-3**. Refer to **“Returning a Kit or Device to Keysight” on page 5-2** for details on sending your kit.

5 Troubleshooting

Troubleshooting Process

If you suspect a bad calibration, or if your network analyzer does not pass performance verification, follow the steps in [Figure 5-1](#).

Figure 5-1 Troubleshooting Flowchart



Where to Look for More Information

This manual contains limited information about network analyzer system operation. For detailed information on using a VNA, ENA or PNA series network analyzer, refer to the appropriate user guide or online Help.

- To view the ENA or PNA online Help, press the Help key on the front panel of the network analyzer.
- To view an online VNA user guide, use the following steps:
 1. Go to www.keysight.com.
 2. Enter your analyzer model number (Ex: N5242A) in the Search box and click Search.
 3. Under the heading Manuals & Guides, click on the title/hyperlink for the document PDF you want to view.

If you need additional information, see **“Contacting Keysight” on page 5-3**.

Returning a Kit or Device to Keysight

If your kit or device requires service, contact Keysight Technologies for information on where to send it. See **“Contacting Keysight” on page 5-3** for contact information. Include a service tag (located near the end of this manual) on which you provide the following information:

- your company name and address
- a technical contact person within your company, and the person's complete telephone number
- the model number and serial number of the kit
- the part number and serial number of each device
- the type of service required
- a **detailed** description of the problem and how the device was being used when the problem occurred (such as calibration or measurement)

Contacting Keysight

Assistance with test and measurements needs and information on finding a local Keysight office are available on the Web at:

<https://www.keysight.com/find/assist/>.

NOTE

In any correspondence or telephone conversation, refer to the Keysight product by its model number and full serial number. With this information, the Keysight representative can determine whether your product is still within its warranty period.

Printing Copies of the Documentation on the Web

To print copies of documentation from the Web, download the PDF file from the Keysight web site:

- Go to www.keysight.com.
Enter the document's part number (located on the title page) in the Search box.
- Click Search
- Open the PDF and print the document (i.e., you may be prompted to Login).

Troubleshooting
Printing Copies of the Documentation on the Web

6 Replaceable Parts

Introduction

Table 6-1 lists the replacement part numbers for the 85052D calibration kit. **Table 6-2** lists the replacement part numbers for items **not** included in the calibration kit that are either required or recommended for successful operation of the kit.

To order a listed part, note the description, the part number, and the quantity desired. Telephone or send your order to Keysight Technologies. See **“Contacting Keysight” on page 5-3** for contact information.

Table 6-1 Replaceable Parts for the 85052D Calibration Kit

Description	Qty per kit	Keysight Part Number
Calibration Devices (3.5 mm) ^a		
Broadband load -m- ^b	1	00902-60005 00902-60003 ^c
Broadband load -f- ^b	1	00902-60006 00902-60004 ^c
Offset short -m-	1	85052-60006
Offset short -f-	1	85052-60007
Offset open -m-	1	85052-60008
Offset open -f-	1	85052-60009
Adapters (3.5 mm)		
-f- to -f-	1	85052-60012
-m- to -f-	1	85052-60013
-m- to -m-	1	85052-60014
Protective End Caps for Connectors		
For 3.5 mm -f- connectors	As Required	1401-0202

Table 6-1 **Replaceable Parts for the 85052D Calibration Kit**

Description	Qty per kit	Keysight Part Number
For 3.5 mm –m– connectors	As Required	1401-0208
Wrench		
5/16 in, 90 N-cm (8 in-lb) torque wrench	1	8710-1765
7 mm open-end wrench	1	8710-1761
Calibration Kit Storage Case		
Storage box assembly	1	85052-60029
Box (without foam pads)	1	5180-7862
Foam pad (for lid of case)	1	5180-8428
Foam pad (for body of case)	1	85052-80026
Miscellaneous Items		
User's and service guide	1	85052-90079

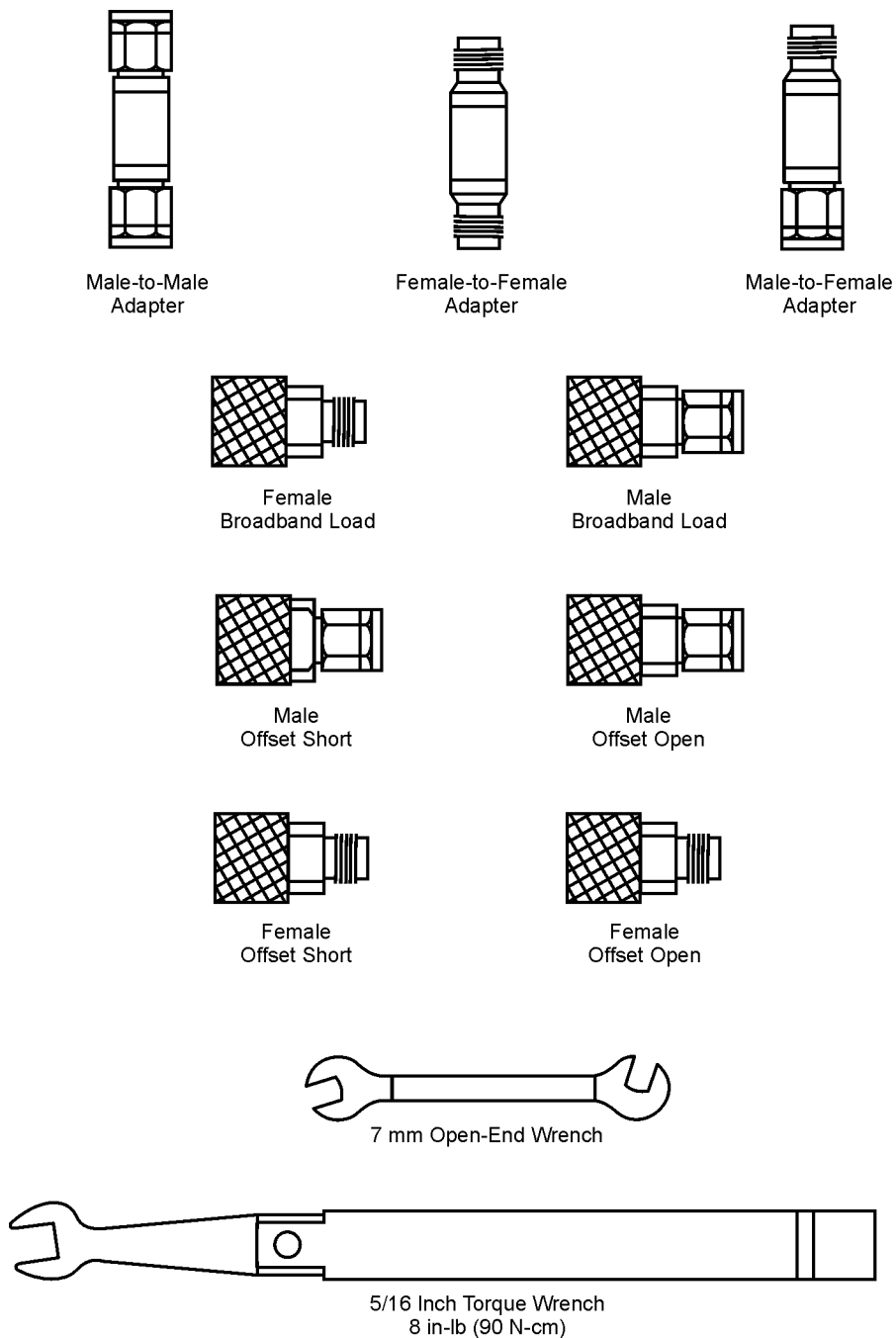
- a. See **“Clarifying the Terminology of a Connector Interface” on page 1-5.**
- b. Broadband load has replaced lowband load.
- c. Part numbers in italic typeface are for production assemblies and cannot be ordered by customers. Both the replacement part number and the production part number are interchangeable and have identical performance.

Table 6-2 **Items Not Included in the Calibration Kit**

Description	Qty	Keysight Part Number
ESD Protection Devices		
Grounding wrist strap	1	9300-1367
5 ft grounding cord for wrist strap	1	9300-0980
2 ft by 4 ft conductive table mat with 15 ft grounding wire	1	9300-0797
ESD heel strap	1	9300-1308
Connector Cleaning Supplies		
Anhydrous isopropyl alcohol (>92% pure) ^a	--	--
Foam-tipped cleaning swabs	100	9300-1745
Miscellaneous Items		
3.5 mm -f- pin-depth gage ^b	1	11752-60105
3.5 mm -m- pin-depth gage ^b	1	11752-60106
3.5 mm slotless connector contact repair kit ^c	1	85052-60049

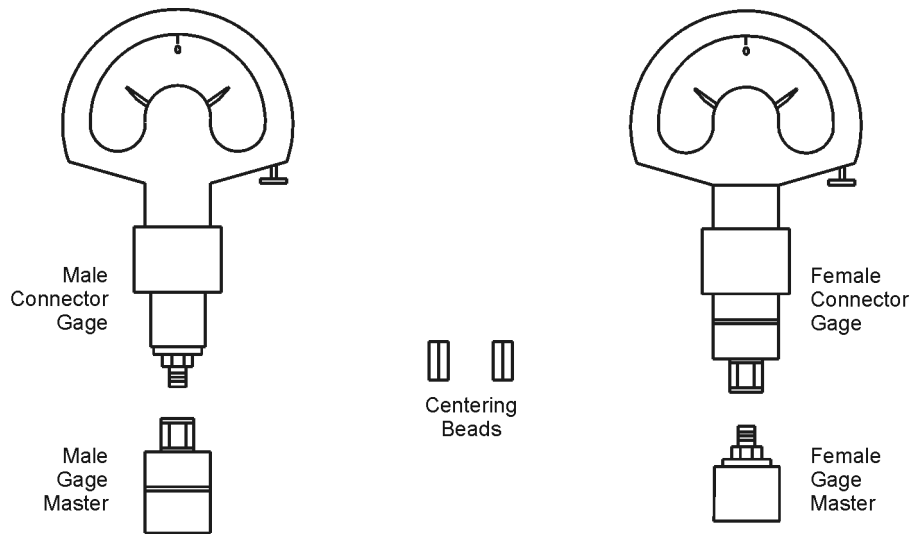
- a. Keysight can no longer safely ship isopropyl alcohol, so customers should purchase it locally.
- b. Refer to **“Clarifying the Terminology of a Connector Interface” on page 1-5.**
- c. All female connectors on the precision devices in this kit are slotless connectors. Refer to **“Inspect Female Connectors” on page 3-4.**

Figure 6-1 Replaceable Parts for the 85052D Calibration Kit



pk501b

Figure 6-2 Replaceable Parts for the 85052D Calibration Kit



Not Shown:

- Storage case
- Protective end caps
- User's and Service Guide

Note: Gages are not included in the kit.

pk501d

Replaceable Parts
Introduction

A: Standard Definitions

Class Assignments and Standard Definitions Values are Available on the Web

Class assignments and standard definitions may change as more accurate model and calibration methods are developed. You can download the most recent class assignments and standard definitions from Keysight's Calibration Kit Definitions Web page at

<https://www.keysight.com/us/en/assets/9922-01521/technical-specifications/Calibration-Kit-Definitions.pdf>.

For a detailed discussion of calibration kits, refer to the Keysight Application Note, "Specifying Calibration Standards and Kits for Keysight Vector Network Analyzers." This application note covers calibration standard definitions, calibration kit content and its structure requirements for Keysight vector network analyzers. It also provides some examples of how to set up a new calibration kit and how to modify an existing calibration kit definition file. To download a free copy, go to www.keysight.com and enter literature number 5989-4840EN in the Search window.

Standard Definitions

Class Assignments and Standard Definitions Values are Available on the Web

Index

A

accuracy
connector gage, 3-6
adapters, 1-2
part numbers, 6-1
specifications, 2-4
alcohol
isopropyl
as cleaning solvent, 3-5

B

box, part number, 6-2
broadband loads, 1-1
part numbers, 6-1
specifications, 2-4

C

cal kit
contents, 1-1
history, 1-3
verifying, 4-1
calibration
bad, 5-1
certificate of, 4-2
constants, See calibration definitions
definitions, 1-2
definitions, entering, 1-2
frequency, 1-6
report, 4-2
temperature, 2-1
when to perform, 1-6
calibration kit
contents, 1-1
drawing of, 6-4, 6-5
history, 1-3
Keysight Application Note, A-1
modifying definition files, A-1
overview, 1-1
performance
how Keysight verifies, 4-1

case, part number, 6-2
certificate of calibration, 4-2
certification
of device specifications, 2-4
characteristics
mechanical, 2-2
class assignments
downloading from Keysight Web site, A-1
cleaning connectors, 3-4
cleaning supplies, 1-2
part number, 6-3
compressed air
for cleaning, 3-4
conductive mat, part number, 6-3
connections, 3-1, 3-10
ESD protection, 3-1
final, 3-11
preliminary, 3-10
separating, 3-12
using torque wrench, 3-11
connector
cleaning, 3-4
damage, 3-3
defects, 3-3
female, 3-4
gage
accuracy, 3-6
handling, 3-6, 3-7
use of, 3-6
zeroing, 3-6, 3-7
gaging, 3-6, 3-7
to determine depth, 3-6
when to do, 3-7
gender, 1-5
mating plane surfaces
cleaning, 3-5
slotless, 1-4, 3-4, 6-3
terminology, 1-5
threads
cleaning, 3-5
inspecting, 3-3
visual inspection, 3-3

wear, 3-3
affect on electrical performance, 3-3

constants, calibration, See calibration definitions
contacting Keysight Technologies, 5-2
contents
calibration kit, 1-1
drawing of, 6-4, 6-5
incomplete
what to do, 1-2

D

damage
caused by electrostatic discharge, 3-1
device, 3-3
inspecting for, 3-3
to connectors, 3-3
data
recertification, 4-2
defective connectors, 3-3
definitions
calibration, 1-2
entering, 1-2
permanently stored, 1-2
part numbers, 6-1
deviation from nominal phase, 2-4
device
cleaning, 3-4
connecting, 3-10
damage, 3-3
disconnecting, 3-12
handling, 3-13
maintenance, 1-5
performance
verifying, 4-1
specifications, 2-4
certification of, 2-4
electrical, 2-4
traceability, 4-1, 4-2

- storage, 3-13
- temperature, 2-1
- visual inspection, 3-3
- disconnections, 3-12
- documentation, part number, 6-2
- downloading class assignments & std definitions from the Web, A-1

E

- electrical characteristics
 - effects of temperature, 2-1
- electrical specifications, 2-4
- electrostatic discharge, *See* ESD
- end cap, part numbers, 6-1
- environmental
 - requirements, 2-1
 - specifications, 2-1
- equipment required, 1-2
- ESD, 3-1
 - protection, 3-1
 - supplies
 - part, numbers, 6-3

F

- female connectors, 3-4
 - inspection of, 3-4
- flowchart, troubleshooting, 5-1
- frequency of calibration, 1-6
- frequency, specifications, 2-4

G

- gage
 - connector, 1-2
 - handling, 3-7
 - zeroing, 3-7
- gaging
 - connectors, 3-6, 3-7
 - when to do, 3-7
 - procedures, 3-7
 - to determine pin depth, 3-6
- gender, connector, 1-5
- general information, 1-1

H

- handling, 3-13
- heel strap, part number, 6-3
- how often to calibrate, 1-6
- humidity, specifications, 2-1

I

- incoming inspection, 1-2
- information,
 - troubleshooting, 5-2
- inspection
 - damage, 3-3
 - defects, 3-3
 - female connectors, 3-4
 - incoming, 1-2
 - mating plane surfaces, 3-3
 - visual, 3-3
- isopropyl alcohol
 - as cleaning solvent, 3-5

K

- Keysight Technologies
 - application note, A-1
 - contacting, 5-2, 5-3
- kit
 - contents, 1-1, 6-4, 6-5
 - drawing of, 6-4, 6-5
 - overview, 1-1

L

- limits
 - pin depth, 2-3
- loads
 - broadband, 1-1
 - broadband, part numbers, 6-1

M

- maintenance, 3-1
 - of devices, 1-5
 - preventive, 1-5
- making connections, 3-10
 - ESD protection, 3-1
 - precautions, 3-10
- manual
 - part number, 6-1
- mat
 - conductive
 - part number, 6-3

- mating plane surfaces
 - cleaning, 3-5
 - connector, 3-5
 - inspection of, 3-3
- mechanical characteristics, 2-2
 - affect on electrical performance, 2-2
 - verifying, 3-6
- modifying calibration kit
 - definition files, A-1

N

- National Institute of Standards and Technology (NIST), 2-4, 4-1
- nitrogen, for cleaning, 3-4
- numbers
 - replaceable parts, 6-1, 6-3
 - serial, 1-3

O

- observed limits
 - pin depth, 2-3
- offset opens and shorts, 1-1
 - part numbers, 6-1
 - specifications, 2-4
- open-end wrench, 1-1, 3-12
 - part number, 6-2
- opens, 1-1
 - part numbers, 6-1
 - specifications, 2-4
- ordering, parts, 6-1, 6-3

P

- part numbers, 6-1
 - of items in kit, 6-1
 - of items not in kit, 6-3
- parts
 - included in kit, 1-1, 6-1
 - not included in kit, 6-1, 6-3
- ordering, 6-1
- replaceable, 6-1
- performance verification
 - failure, 5-1
- pin depth, 2-2
 - affect on electrical performance, 2-3
 - gaging to determine, 3-6
 - observed limits, 2-3, 3-6

protrusion, 2-2
 recession, 2-2
 typical values, 2-3
 precision adapters, 1-2
 part numbers, 6-1
 precision slotless
 connectors, 1-4
 preventive maintenance, 1-5
 procedures
 cleaning, 3-4
 gaging, 3-7
 zeroing, 3-7
 protective end caps, part
 numbers, 6-1
 protrusion
 pin depth, 2-2

R

recertification
 how to order, 4-2
 interval, 4-2
 locations, 4-2
 services included, 4-2
 recession
 pin depth, 2-2
 regulations
 environmental, 2-1
 replaceable parts, 6-1, 6-3
 drawing of, 6-4, 6-5
 report, calibration, 4-2
 requirements
 environmental, 2-1
 return kit or device to
 Keysight, 1-2, 5-2
 return loss specifications, 2-4

S

separating connections, 3-12
 serial numbers, 1-3
 devices, 1-3
 recording, 1-3
 service, 5-2
 service tag, 4-2, 5-2
 shorts, 1-1
 part numbers, 6-1
 specifications, 2-4
 specifications, 2-1
 adapters, 2-4
 broadband loads, 2-4
 certification of, 2-4

deviation from nominal
 phase, 2-4
 device, 2-4
 electrical, 2-4
 environmental, 2-1
 frequency, 2-4
 humidity
 operating, 2-1
 storage, 2-1
 offset opens and shorts, 2-4
 return loss, 2-4
 sliding loads, 2-4
 temperature, 2-1
 torque wrench, 3-11
 traceability, 4-1, 4-2
 standard definitions
 downloading from Keysight
 Web site, A-1
 standards
 international, 2-4
 National Institute of
 Standards and Technology
 (NIST), 2-4, 4-1
 static
 discharge, 3-1
 electricity, 3-1
 storage, 3-13
 storage case, part number, 6-2
 strap
 heel and wrist, part
 number, 6-3
 supplies
 cleaning, 1-2
 part number, 6-3
 swabs
 cleaning, 3-5

T

tag
 service, 4-2, 5-2
 temperature
 affect on electrical
 performance, 2-1
 calibration, 2-1
 cautions about, 2-1
 changes in, 2-1
 device, 2-1
 error-corrected, 2-1
 measurement, 2-1
 specifications, 2-1
 operating, 2-1

 storage, 2-1
 verification and
 measurement, 2-1
 test data, 4-2
 threads
 connector
 cleaning, 3-5
 inspecting, 3-3
 torque wrench, 1-2
 specifications, 3-11
 traceability
 of device specifications, 4-1,
 4-2
 troubleshooting, flowchart, 5-1

U

user's and service guide
 part number, 6-2

V

verification
 performance, 4-2
 temperature, 2-1
 visual inspection, 3-3

W

wear
 connector, 3-3
 affect on electrical
 performance, 3-3
 3
 when to calibrate, 1-6
 wrench
 open-end, 1-2, 3-11, 3-12
 proper positioning of, 3-11
 torque, 1-2, 3-11, 3-12
 precautions for use
 of, 3-12
 proper use of, 3-12
 wrist strap, part number, 6-3

Z

zeroing
 connector gage, 3-7

Index



This information is subject to change without notice.
© Keysight Technologies 1994 - 2023
April 2023



85052-90079

www.keysight.com

