

# Keysight N77xx Series Optical Switch

NOTICE: This document contains references to Agilent Technologies. Agilent's former Test and Measurement business has become Keysight Technologies. For more information, go to [www.keysight.com](http://www.keysight.com).



## Notices

© Keysight Technologies, Inc. 2015

No part of this manual may be reproduced in any form or by any means (including electronic storage and retrieval or translation into a foreign language) without prior agreement and written consent from Keysight Technologies, Inc. as governed by United States and international copyright laws.

### Manual Part Number

N7731-90B01

### Edition

Edition 2.0, January 2015

Keysight Technologies,  
Deutschland GmbH  
Herrenberger Str. 130  
71034 Böblingen, Germany

### For Assistance and Support

<http://www.keysight.com/find/assist>

### Limitation of Warranty

The foregoing warranty shall not apply to defects resulting from improper or inadequate maintenance by Buyer, Buyer-supplied software or interfacing, unauthorized modification or misuse, operation outside of the environmental specifications for the product, or improper site preparation or maintenance. No other warranty is expressed or implied. Keysight Technologies specifically disclaims the implied warranties of Merchantability and Fitness for a Particular Purpose.

## Warranty

**THE MATERIAL CONTAINED IN THIS DOCUMENT IS PROVIDED “AS IS,” AND IS SUBJECT TO BEING CHANGED, WITHOUT NOTICE, IN FUTURE EDITIONS. FURTHER, TO THE MAXIMUM EXTENT PERMITTED BY APPLICABLE LAW, KEYSIGHT DISCLAIMS ALL WARRANTIES, EITHER EXPRESS OR IMPLIED, WITH REGARD TO THIS MANUAL AND ANY INFORMATION CONTAINED HEREIN, INCLUDING BUT NOT LIMITED TO THE IMPLIED WARRANTIES OF MERCHANTABILITY AND FITNESS FOR A PARTICULAR PURPOSE. KEYSIGHT SHALL NOT BE LIABLE FOR ERRORS OR FOR INCIDENTAL OR CONSEQUENTIAL DAMAGES IN CONNECTION WITH THE FURNISHING, USE, OR PERFORMANCE OF THIS DOCUMENT OR OF ANY INFORMATION CONTAINED HEREIN. SHOULD KEYSIGHT AND THE USER HAVE A SEPARATE WRITTEN AGREEMENT WITH WARRANTY TERMS COVERING THE MATERIAL IN THIS DOCUMENT THAT CONFLICT WITH THESE TERMS, THE WARRANTY TERMS IN THE SEPARATE AGREEMENT SHALL CONTROL.**

### Technology Licenses

The hardware and/or software described in this document are furnished under a license and may be used or copied only in accordance with the terms of such license.

### Restricted Rights Legend

If software is for use in the performance of a U.S. Government prime contract or subcontract, Software is delivered and licensed as “Commercial computer software” as defined in DFAR 252.227-7014 (June 1995), or as a “commercial item” as defined in FAR 2.101(a) or as “Restricted computer software” as

defined in FAR 52.227-19 (June 1987) or any equivalent agency regulation or contract clause. Use, duplication or disclosure of Software is subject to Keysight Technologies’ standard commercial license terms, and non-DOD Departments and Agencies of the U.S. Government will receive no greater than Restricted Rights as defined in FAR 52.227-19(c)(1-2) (June 1987). U.S. Government users will receive no greater than Limited Rights as defined in FAR 52.227-14 (June 1987) or DFAR 252.227-7015 (b)(2) (November 1995), as applicable in any technical data.

## Safety Notices

### CAUTION

A **CAUTION** notice denotes a hazard. It calls attention to an operating procedure, practice, or the like that, if not correctly performed or adhered to, could result in damage to the product or loss of important data. Do not proceed beyond a **CAUTION** notice until the indicated conditions are fully understood and met.

### WARNING

A **WARNING** notice denotes a hazard. It calls attention to an operating procedure, practice, or the like that, if not correctly performed or adhered to, could result in personal injury or death. Do not proceed beyond a **WARNING** notice until the indicated conditions are fully understood and met.

# Contents

## 1 Getting Started

Overview	7
Keysight N773x Optical Switch	7
Initial Inspection	8
Claims and Repackaging	9
Claims and Repackaging	9
Return Shipments to Keysight Technologies	9
Safety Considerations	10
Safety Considerations - Overview	10
Safety Symbols	10
General	11
Operating Environment	12
Line Power Requirements	12
Input/Output Signals	12
Line Power Connectors	12
Instrument Markings	13
AC Line Power Supply Requirements	14
AC Line Power Supply Requirements - Overview	14
Line Power Requirements	14
Line Power Cable	14
Changing the Fuse	16
Operating and Storage Environment	16
Operating and Storage Environment - Overview	16
Temperature	16
Humidity	17
Altitude	17
Pollution Protection	17
Instrument Cooling	17
Input and Output Connectors	18
Input and Output Connectors - Overview	18
Front Panels - Optical Switches	19
Rear Panel	19

<b>Making Optical Connections</b>	<b>20</b>
<b>Making Optical Connections</b>	<b>20</b>
<b>Electrical Connectors</b>	<b>21</b>
<b>LAN Interface</b>	<b>21</b>
<b>LAN Interface</b>	<b>21</b>
<b>Selecting a LAN Network</b>	<b>21</b>
<b>Private LAN Considerations</b>	<b>21</b>
<b>Security</b>	<b>22</b>
<b>Performance</b>	<b>22</b>
<b>Reliability</b>	<b>22</b>
<b>IP Address Availability</b>	<b>22</b>
<b>Site LAN Considerations</b>	<b>23</b>
<b>Connecting the LAN Cable</b>	<b>23</b>
<b>GPIB Interface</b>	<b>25</b>
<b>GPIB Interface</b>	<b>25</b>
<b>Cables and Adapters</b>	<b>25</b>
<b>Connector</b>	<b>26</b>
<b>GPIB Logic Levels</b>	<b>26</b>
<b>USB Interface</b>	<b>27</b>
<b>Powering Up the Instrument</b>	<b>27</b>
<b>Powering Up the Instrument</b>	<b>27</b>
<b>Front Panel Indicators</b>	<b>28</b>
<b>Connecting to the Instrument</b>	<b>28</b>
<b>Connecting to the Instrument - Overview</b>	<b>28</b>
<b>Connecting over USB</b>	<b>28</b>
<b>Finding the IP Address of an instrument</b>	<b>30</b>
<b>Connecting over LAN</b>	<b>31</b>
<b>N77xx Viewer Common User Interface Functions</b>	<b>35</b>
<b>Software Installation</b>	<b>35</b>
<b>Connecting to an Instrument</b>	<b>35</b>
<b>Viewing Measurements and Settings</b>	<b>38</b>
<b>Saving and Recalling Configurations</b>	<b>39</b>
<b>Controlling the Instrument Refresh</b>	<b>40</b>

## **2 Switch Operation**

<b>Using the Optical Switch</b>	<b>43</b>
<b>Controlling the Optical Switch</b>	<b>43</b>

<b>Typical Applications</b>	<b>45</b>
<b>Overview</b>	<b>45</b>
<b>1 x 2 Switch</b>	<b>45</b>
<b>2 x 2 Switch</b>	<b>46</b>
<b>1 x 4 Switch</b>	<b>46</b>

### **3 Specifications and Regulations Compliance**

<b>Definition of Terms</b>	<b>49</b>
<b>Literature</b>	<b>53</b>
<b>Technical Specifications - Optical Switch</b>	<b>54</b>
<b>General Characteristics - Optical Switch</b>	<b>55</b>
<b>Declarations of Conformity - Optical Switch</b>	<b>55</b>
<b>Regulations Information</b>	<b>56</b>
<b>EMC Canada</b>	<b>57</b>
<b>Acoustic Noise Information Germany</b>	<b>57</b>
<b>Remove all doubt</b>	<b>57</b>
<b>Remove all doubt</b>	<b>57</b>
<b>Keysight E-mail Updates</b>	<b>57</b>
<b>Keysight Direct</b>	<b>58</b>
<b>Keysight Open</b>	<b>58</b>
<b>LXI</b>	<b>58</b>
<b>www.keysight.com</b>	<b>59</b>

### **4 Instrument Options and Accessories**

<b>Instrument Option and Accessories - Overview</b>	<b>61</b>
<b>Instrument and Options - Keysight N7731A and N7734A</b>	<b>62</b>
<b>Cables</b>	<b>62</b>

### **5 Maintenance and Troubleshooting**

<b>Maintenance and Troubleshooting - Overview</b>	<b>65</b>
---	-----------

<b>Cleaning Instructions</b>	<b>65</b>
<b>Cleaning Instructions</b>	<b>65</b>
<b>Cleaning Instructions for this Instrument</b>	<b>66</b>
<b>Safety Precautions</b>	<b>66</b>
<b>Why is it important to clean optical devices?</b>	<b>66</b>
<b>What do I need for proper cleaning?</b>	<b>67</b>
<b>Preserving Connectors</b>	<b>72</b>
<b>Cleaning Instrument Housings</b>	<b>72</b>
<b>Which Cleaning Procedure should I use?</b>	<b>73</b>
<b>How to clean connectors</b>	<b>73</b>
<b>How to clean connector adapters</b>	<b>75</b>
<b>How to clean bare fiber adapters</b>	<b>75</b>
<b>How to clean optical glass plates</b>	<b>76</b>
<b>Additional Cleaning Information</b>	<b>76</b>
<b>Other Cleaning Hints</b>	<b>77</b>
<b>Firmware Upgrades</b>	<b>77</b>
<b>Error Messages</b>	<b>78</b>
<b>SYST:ERR?</b>	<b>78</b>
<b>Data Sanitation</b>	<b>78</b>
<b>Memory Inventory</b>	<b>78</b>
<b>Clearing User Data</b>	<b>78</b>

**Index 81**

# 1

## Getting Started

### Overview

This chapter helps you start using your N77-Series instrument.

- [“Keysight N773x Optical Switch” on page 7](#)
- [“Initial Inspection” on page 8](#)
- [“Claims and Repackaging” on page 9](#)
- [“Safety Considerations - Overview” on page 10](#)
- [“AC Line Power Supply Requirements - Overview” on page 14](#)
- [“Operating and Storage Environment - Overview” on page 16](#)
- [“Input and Output Connectors - Overview” on page 18](#)
- [“Making Optical Connections” on page 20](#)
- [“Electrical Connectors” on page 21](#)
- [“LAN Interface” on page 21](#)
- [“GPIB Interface” on page 25](#)
- [“USB Interface” on page 27](#)
- [“Powering Up the Instrument” on page 27](#)
- [“Connecting to the Instrument - Overview” on page 28](#)

### Keysight N773x Optical Switch

The Keysight N77-Series optical switches are available for both single-mode and multimode fiber test applications. The excellent repeatability, compact format and flexible control interfacing support high-performance automated setups. The multimode switch has excellent mode fidelity.



These instruments are used for automatic routing of optical signals for testing devices like transceivers, amplifiers, and passive components. Optical switches optimize the investment in automated test equipment by improving repeatability and throughput and supporting parallel measurements of multiport and multiple devices.

These switches can be used to avoid repeated reconnections during your measurements and are critical to automated procedures. The excellent switching repeatability assures that the signal level is constant from cycle to cycle. The low IL and PDL and high repeatability assure minimum impact of the switch on measurement accuracy. A typical setup may use a 1x4 switch to select among several source wavelengths in a test, while avoiding the time delay for power stabilization if each source must be cycled on and off. Or the same digital signal may be switch among several instruments, like a power meter, DCA or BERT.

In many cases, valuable signal source and analysis instrumentation can be used more effectively in a parallel-test configuration. For example, multiple cables or components can be tested together during temperature cycling. On the other hand, an increasing use of inherently parallel components, as for optical interconnections for 40G or 100G using 10 Gb/s components, calls for identical testing in multiple paths. These are well supported by the 1x13 switch configuration and the 13th path can often be used as a permanent reference path.

Signals in multimode fibers are distributed over a range of mode groups that can have different loss and delay in a link. For dependable multimode transceiver testing, the instrument used to set the power level should not change this modal distribution. The Keysight multimode switches are designed with very short collimated paths between fiber, so signals propagate in practically the same distribution as through uninterrupted multimode fiber.

## Initial Inspection

Inspect the shipping container for damage. If there is damage to the container or cushioning, keep them until you have checked the contents of the shipment for completeness and verified the instrument both mechanically and electrically. The Function Tests give a procedure for checking the operation of the instrument. If the contents are incomplete, mechanical damage or defect is apparent, or if an instrument does not pass the operator's checks, notify the nearest Keysight Technologies Sales/Service Office.

**NOTE**

To avoid hazardous electrical shock, do not perform electrical tests when there are signs of shipping damage to any portion of the outer enclosure (covers, panels, and so on).

---

## Claims and Repackaging

### Claims and Repackaging

If physical damage is evident or if the instrument does not meet specification when received, notify the carrier and the nearest Keysight Technologies Sales/Service Office. The Keysight Technologies Sales/Service Office will arrange for repair or replacement of the unit without waiting for settlement of the claim against the carrier.

### Return Shipments to Keysight Technologies

If the instrument is to be shipped to an Keysight Technologies Sales/Service Office, attach a tag showing owner, return address, model number and full serial number and the type of service required.

The original shipping carton and packing material may be reusable, but the Keysight Technologies Sales/Service Office will provide information and recommendations on materials to be used if the original packing is no longer available or reusable. General instructions for repackaging are as follows:

- Wrap instrument in heavy paper or plastic.
- Use strong shipping container. A double wall carton made of 350-pound test material is adequate.
- Use enough shock absorbing material (3 to 4 inch layer) around all sides of the instrument to provide a firm cushion and prevent movement inside container. Protect control panel with cardboard.
- Seal shipping container securely.
- Mark shipping container FRAGILE to encourage careful handling.
- In any correspondence, refer to instrument by model number and serial number.

### Deleting user data

If you need to delete all your logged data and user configurations, that is to reset the instrument completely, refer to the section "Data Sanitation". See [“Maintenance and Troubleshooting - Overview” on page 65.](#)

## Safety Considerations

### Safety Considerations - Overview

The following general safety precautions must be observed during all phases of operation, service, and repair of this instrument. Failure to comply with these precautions or with specific warnings elsewhere in this manual violates safety standards of design, manufacture, and intended use of the instrument. Keysight Technologies Inc. assumes no liability for the customer's failure to comply with these requirements. This product has been designed and tested in accordance with IEC Publication 61010-1, Safety Requirements for Electrical Equipment for Measurement, Control and Laboratory, and has been supplied in a safe condition. The instruction documentation contains information and warnings that must be followed by the user to ensure safe operation and to maintain the product in a safe condition.

### Safety Symbols

#### CAUTION

The *caution* sign denotes a hazard. It calls attention to a procedure which, if not correctly performed or adhered to, could result in damage to or destruction of the product. Do not proceed beyond a caution sign until the indicated conditions are fully understood and met.

---

#### WARNING

The *warning* sign denotes a hazard. It calls attention to a procedure which, if not correctly performed or adhered to, could result in injury or loss of life. Do not proceed beyond a warning sign until the indicated conditions are fully understood and met.

---



The apparatus will be marked with this symbol when it is necessary for the user to refer to the instruction manual in order to protect the apparatus against damage.

---

## General

This is a Safety Class 1 instrument (provided with a protective earth terminal) and has been manufactured and tested according to international safety standards.

Before operation, you should review the instrument and manual for safety markings and instructions. You must follow these to ensure safe operation and to maintain the instrument in safe condition.

Some circuits are powered whenever the instrument is connected to the AC power source. To disconnect from the line power, disconnect the power cord either at the rear power inlet or at the AC line power source (receptacle). One of these must always be accessible. If the instrument is in a cabinet, it must be disconnected from the line power by the system's line power switch.

### **WARNING**

**To avoid hazardous electrical shock, do not perform electrical tests when there are signs of shipping damage to any portion of the outer enclosure (covers, panels, and so on).**

---

## Operating Environment

### WARNING

The instrument is not designed for outdoor use. To prevent potential fire or shock hazard, do not expose the instrument to rain or other excessive moisture.

---

## Line Power Requirements

### CAUTION

The instrument complies with installation category II and can operate from the single-phase AC power source that supplies between 100 V and 240 V at a frequency in the range 50 to 60 Hz. The maximum voltage fluctuation is 10% of the nominal supply voltage. The maximum power consumption is 60 VA with all options installed.

---

## Input/Output Signals

### CAUTION

There is one input BNC connector: Trigger In. This is a TTL input. A maximum of 5 V can be applied as an external voltage to this input connector.

There is one output BNC connector: Trigger Out. This is a TTL output. Do not apply an external voltage to this connector.

---

## Line Power Connectors

In accordance with international safety standards, the instrument has a three-wire power cable. When connected to an appropriate AC power receptacle, this cable earths the instrument cabinet. The type of power cable shipped with each instrument depends on the country of destination. Please refer to [“Instrument Option and Accessories - Overview” on page 61](#) for the part numbers of available power cables.

**WARNING**

To avoid the possibility of injury or death, you must observe the following precautions before switching on the instrument.

- Insert the power cable plug only into a socket outlet provided with a protective earth contact. Do not negate this protective action by the using an extension cord without a protective conductor.
- Do not interrupt the protective earth connection intentionally.
- Do not remove protective covers. Operating personnel must not remove instrument covers. Component replacement and internal adjustments must be made only by qualified service personnel.
- Instruments that appear damaged or defective should be made inoperative and secured against unintended operation until they can be repaired by qualified service personnel.
- Defective, damaged, or malfunctioning laser sources must be returned to an Keysight Technologies Service Center.

Do not operate the instrument in the presence of flammable gases or fumes. Operation of any electrical instrument in such an environment constitutes a definite safety hazard.

---

## Instrument Markings



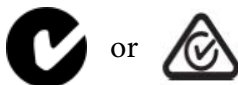
The instruction manual symbol. The product is marked with this warning symbol when it is necessary for the user to refer to the instructions in the manual.



The CE mark is the conformity marking of the European Community



The CSA mark is a registered trademark of the Canadian Standards Association.



The C-Tick or RCM mark is the certification mark of the Australian Communications Authority.



The KC mark is the Korean certification mark.

---



The recycling symbol indicates the general ease with which the instrument can be recycled.



Do not dispose in domestic household waste. To return unwanted products, contact your local Keysight office, or see <http://about.keysight.com/en/companyinfo/environment/takeback.shtml> or more information.

## AC Line Power Supply Requirements

### AC Line Power Supply Requirements - Overview

This section provides information on:

- Line Power Requirements
- Line Power Cable
- Changing the Fuse

### Line Power Requirements

The instrument complies with installation category II and can operate from the single-phase AC power source that supplies between 100 V and 240 V at a frequency in the range 50 to 60 Hz. The maximum voltage fluctuation is 10% of the nominal supply voltage. The maximum power consumption is 60 VA with all options installed.

### Line Power Cable

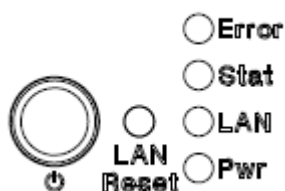
In accordance with international safety standards, the instrument has a three-wire power cable. When connected to an appropriate AC power receptacle, this cable earths the instrument cabinet. For the part number of the power cable for your country and instrument see the “[Instrument Option and Accessories - Overview](#)” on page 61.

**CAUTION**

Please note that the switch on the front panel of the instrument does not stop the flow of power to the instrument.

If you need to turn off the power, unplug the instrument at the mains or remove the power cable connector from the appliance coupler at the rear of the instrument. For this reason, the power cable connection should be easily accessible - allowing you to turn off the power quickly. If the instrument is in a cabinet, it must be disconnected from the line power by the system's line power switch.

The power switch allows you to switch between stand-by mode and power-on mode.



**Figure 1** Power Switch

When the instrument is in stand-by mode, the Pwr LED is orange. When the instrument is powered-on, the Pwr LED is green.

**WARNING**

**To avoid the possibility of injury or death, you must observe the following precautions before switching on the instrument.**

- **Insert the power cable plug only into a socket outlet provided with a protective earth contact. Do not negate this protective action by using an extension cord without a protective conductor.**
- **Do not interrupt the protective earth connection intentionally.**

The AC power requirements are summarized on the rear panel of the instrument.



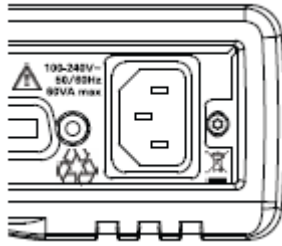


Figure 2 AC Power Requirement Markings

### Changing the Fuse

#### CAUTION

There is no user replaceable fuse for the instrument. Changing the fuse should be carried out only by Keysight Technologies service personnel. If you need to get the fuse replaced refer to your nearest Keysight Technologies Sales/Service Office.

---

## Operating and Storage Environment

### Operating and Storage Environment - Overview

The following summarizes the operating environment ranges. In order for the instrument to meet specifications, the operating environment must be within these limits.

#### WARNING

**The instrument is not designed for outdoor use. To prevent potential fire or shock hazard, do not expose the instrument to rain or other excessive moisture.**

---

### Temperature

The instrument should be protected from temperature extremes and changes in temperature that may cause condensation within it.

The operating temperature is from 5°C to +40°C.

The storage temperature is from -40°C to +70°C.

## Humidity

The operating humidity is 15 to 95%, non-condensing.

## Altitude

The maximum operating altitude is 2000 m.

## Pollution Protection

The instruments are designed for pollution degree 2.

## Instrument Cooling

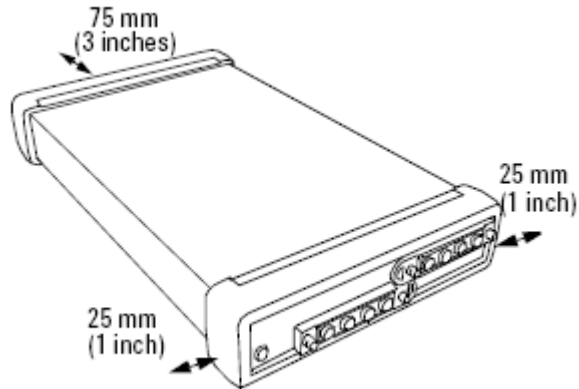
The instrument has a cooling fan mounted internally.

Mount or position your instrument upright and horizontally, as shown in Figure 3 so that air can circulate through it freely.

### Operating Position

When operating the instrument choose a location that provides at least 75 mm (3 inches) of clearance at the rear, and at least 25 mm (1 inch) of clearance at each side. Failure to provide adequate air clearance may result in excessive internal temperature, reducing instrument reliability. The instrument should not be operated when resting on its rear or side panels.

## 1 Getting Started



**Figure 3** Correct Operating Position

(shown here for the Keysight N7744/5A, valid also for the N7751/2A, Keysight N7761/2/4A, N7766/68A, N773xA, and the N7711/4A)

## Input and Output Connectors

### Input and Output Connectors - Overview

This section provides information on:

- Front Panels - Optical Switches
- Rear Panel

## Front Panels - Optical Switches

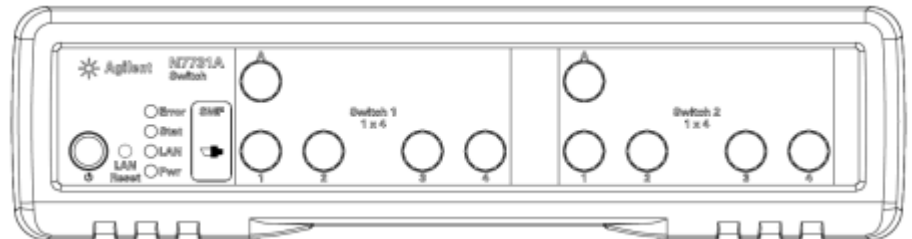


Figure 4 Front panel of the Keysight N7731A 2-Channel 1x4 Optical Switch

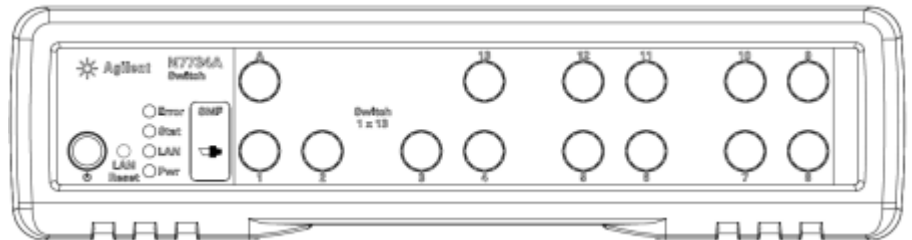


Figure 5 Front panel of the Keysight N7734A 1-Channel 1x13 Optical Switch

## Rear Panel

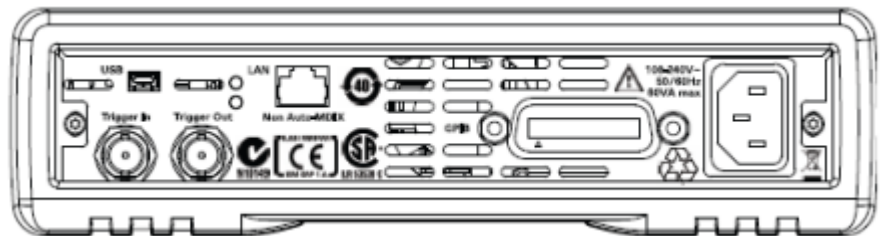


Figure 6 Rear panel of the Keysight N77 Series instruments.

## Making Optical Connections

### Making Optical Connections

The Option 009 single-mode fiber optical switches have angled FC/APC connectors with narrow keying.

The option 062 multimode switches have straight FC/PC connector interfaces. The dimensions of the internal fiber core is 62.5µm. The switches may also be used with good results together with 50 µm core fiber because the fiber path is short.

#### CAUTION

If the connectors on your instrument are angled, you can only use cables with angled connectors at the instrument.

If the connectors on your instrument are straight, you can only use cables with straight connectors at the instrument.



**Figure 7** Angled and Straight Connector Symbols

The above figure shows the symbols that tell you whether the optical connectors of your instrument are angled or straight. The angled contact connector symbol is colored green.

You should connect straight contact fiber end connectors with neutral sleeves to straight contact connectors, or connect angled contact fiber end connectors with green sleeves to angled contact connectors.

#### NOTE

You cannot connect angled non-contact fiber end connectors with orange sleeves directly to the attenuator, laser, or switch.

## Electrical Connectors

There are two BNC connectors on the rear panel of your instrument. These are the Trigger Out and the Trigger In connectors.

**CAUTION**

The Trigger In is a TTL input. A maximum of 5 V can be applied as an external voltage to this input connector.

The Trigger Output is the only output BNC connector. This is a TTL output. Do not apply an external voltage to this connector.

---

## LAN Interface

### LAN Interface

This section explains the concept of LAN in details.

### Selecting a LAN Network

For the purposes of this guide, a private (isolated) LAN network is defined as a network configuration in which instrument access is a direct connection between the computer and the instrument, or to multiple instruments connected via a dedicated router or switch. A site (company-wide) LAN is defined as a network in which instrument access is available to many users at on-site and remote locations. The instrument's application and/or your company's IT (Information Technology) department may have guidelines that help decide the type of network (private or site) used. If a network configuration has not been determined, refer to the following considerations concerning each type.

### Private LAN Considerations

Among the basic parameters of a private LAN network to consider are security, performance, reliability, and IP address availability.

## Security

A private network generally involves a direct connection between the computer and the instrument, or to multiple instruments using switches or routers. Access to the instrument is limited to users on the private network, as opposed to users on a site network that could locate and access the instrument from any location.

Private networks can reduce the possibility of tests being disrupted by unplanned or unauthorized access. Code generation for test systems on a private network is often simplified, as provisions against unauthorized users may not be required.

## Performance

Test systems where large amounts of data are transferred usually have faster throughput on a private network. On a site network, heavy and unpredictable LAN traffic affects each instrument (node) on the network. The impact on a test system is that repeatability is difficult to achieve as latencies are difficult to account for.

## Reliability

Private networks are fundamentally more reliable than site networks as they host fewer users and are less complex than site networks.

Private networks are isolated from conditions that could bring down (crash) a site network.

## IP Address Availability

Every instrument (node) on a LAN (private or site) has an IP (Internet Protocol) address. Due to the expanding use of the internet, the number of site network IP addresses available is limited. By using a router with Dynamic Host Configuration Protocol (DHCP) capability on a private network, the router can assign an IP address to each instrument thus creating a sub-network (subnet) that does not consume site IP addresses.

## Site LAN Considerations

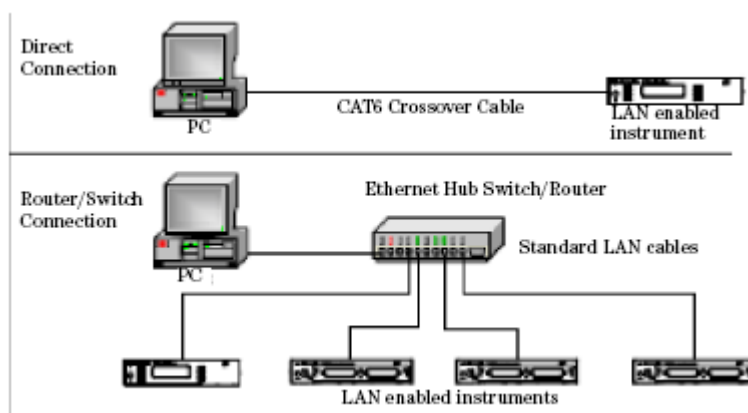
For applications requiring access by many users or by users at distributed sites, a site LAN network is required. In addition to supporting multiple users, site LANs often offer the advantage of being maintained by IT departments. When using a site LAN, consult your IT department regarding LAN configuration and security issues.

## Connecting the LAN Cable

LAN cables are connected between the LAN terminal on the instrument and the computer, or between the instrument and a router or switch if included in your network.

### Private Network Connections

The figure below shows typical LAN cable connections for a private network.



**Figure 8** Typical Private (isolated) LAN Network Connections

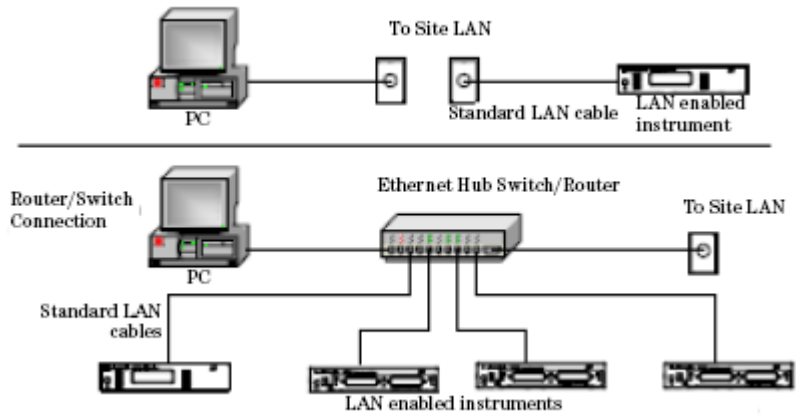
If the instrument is connected directly to the PC, use a LAN crossover cable, as provided with the instrument. If your computer supports Auto-MDIX or contains a LAN card with gigabit data transfer rates, the (blue) crossover cable is not required. A standard LAN cable can be used instead.

For private LAN networks that include a switch or router, use standard LAN cables for all network connections. Do not use a crossover cable.



### Site Network Connections

The following figure shows a typical LAN cable connection for a site network.



**Figure 9** Typical Site LAN Network Connections.

On site networks, the instrument and the computer are connected directly to site LAN ports, or are connected to the site LAN through a switch. In each site network configuration, standard LAN cables are used.

### The LAN LED

As the LAN connection is made, the DHCP server assigns an address and the LXI device identification proceeds you will see the following indicators;

No LAN link	LAN link No IP Address	LAN link	LXI Device identification
Red LAN	Yellow LAN	Green LAN	Green LAN blink

**Figure 10** The LAN LED

There may be a delay between making the LAN link (yellow status) and getting the IP address (green status). This delay may be longer if there

is no DHCP server, for example when the instrument is connected directly to a PC.

### The LAN Reset button

This recessed button has two functions.

- Pressing the button briefly invokes a preset of the instrument and restores default measurement settings. This is equivalent to the programming command

`:SYSTem:PRESet`

- Pressing and holding the button for 3 seconds will reset the LAN parameters to the factory default. This includes changing the password for modifying the configuration via LAN back to the default "Keysight". This is equivalent to the following sequence of programming commands:

`:SYSTem:COMMunicate:ETHernet:RESet`

## GPIB Interface

### GPIB Interface

You can connect your GPIB interface into a star network, a linear network, or a combination star and linear network. The limitations imposed on this network are as follows:

- The total cable length cannot exceed 20 meters.
- The maximum cable length between devices is 4 meters, with an average separation of 2m between devices over the whole bus.
- No more than 15 devices may be interconnected on one bus.

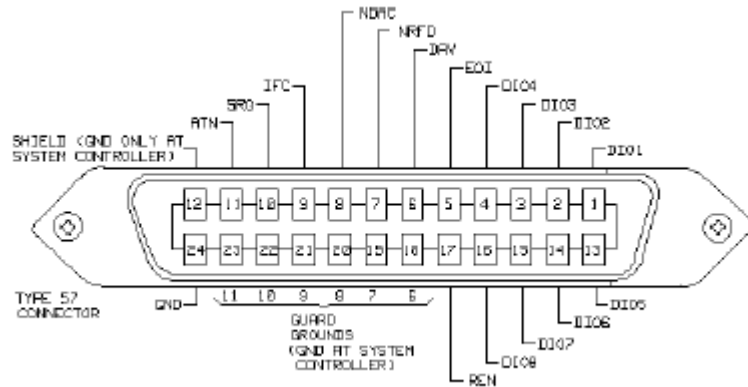
### Cables and Adapters

See [“Cables” on page 62](#) for details on cables and adapters.

## Connector

The following figure shows the connector and pin assignments.

Connector Part Number: 1251-0293



**Figure 11** GPIB Connector

### CAUTION

Keysight Technologies products delivered now are equipped with connectors having ISO metric-threaded lock screws and stud mounts (ISO M3.5×0.6) that are black in color. Earlier connectors may have lock screws and stud mounts with English-threaded lock screws and stud mounts (6-32 UNC) that have a shiny nickel finish.

### CAUTION

It is recommended that you do not stack more than three connectors, one on top of the other.

Hand-tighten the connector lock screws. Do not use a screwdriver.

## GPIB Logic Levels

The instrument's GPIB lines use standard TTL logic, as follows:

True = Low = digital ground or 0 Vdc to 0.4 Vdc

False = High = open or 2.5 Vdc to 5 Vdc

All GPIB lines have LOW assertion states. High states are held at 3.0 Vdc by pull-ups within the instrument. When a line functions as an input, it requires approximately 3.2 mA to pull it low through a closure to digital

ground. When a line functions as an output, it will sink up to 48 mA in the low state and approximately 0.6 mA in the high state.

**NOTE**

The GPIB line screens are not isolated from ground.

## USB Interface

**NOTE**

Before connecting the instrument over USB, install the Keysight I/O Libraries Suite, which is included on a CD with the instrument.

The instrument is a USB device, with a mini-USB connector.

## Powering Up the Instrument

### Powering Up the Instrument

When you switch on the instrument, the LEDs on the front panel show the various stages of booting.

Standby	Power On	FPGAs loaded	Analog Board 1 loaded	Analog Board 2 loaded
Error	Yellow Error	Green Error	Green Error	Green Error
Stat	Yellow Stat	Yellow Stat	Green Stat	Green Stat
LAN	Yellow LAN	Yellow LAN	Yellow LAN	Green LAN
Yellow Pwr	Green Pwr	Green Pwr	Green Pwr	Green Pwr

**Figure 12** Powering Up the Instrument

## Front Panel Indicators

During operation, you may notice the following LED indicators:

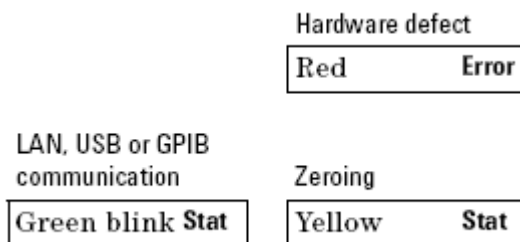


Figure 13 Front Panel Indicators

## Connecting to the Instrument

### Connecting to the Instrument - Overview

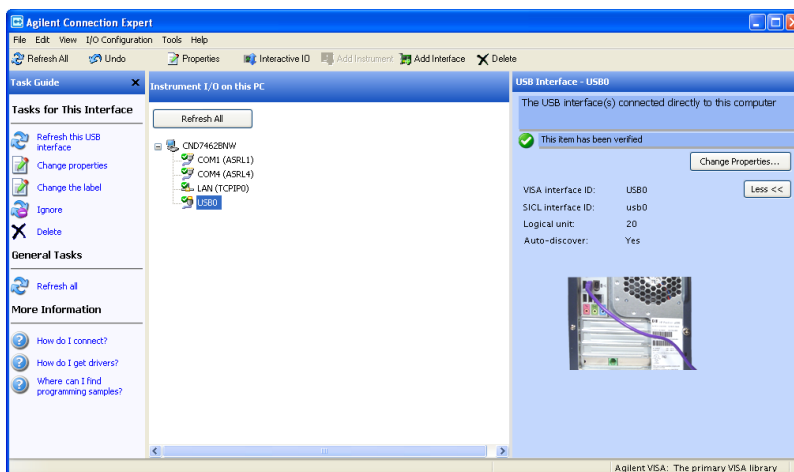
When you are first connecting the instrument, we recommend you use the Keysight Connection Expert included with the Keysight I/O libraries (available on the CD supplied with the instrument, or from [www.keysight.com](http://www.keysight.com)).

### Connecting over USB

**NOTE**

The screenshots show the Keysight N7745A Multiport Power Meter. The same procedure applies when connecting an Keysight N7744A Multiport Power Meter, an Keysight N7751/2A Optical Attenuator and Power Meter, or an Keysight N7761/2/4/6/8A Optical Attenuator or an Keysight N7711/4A Tunable Laser System Source or an N773x Optical Switch.

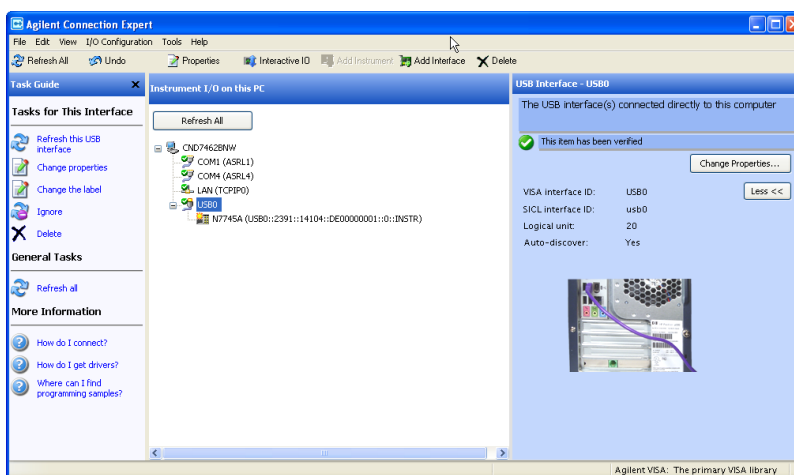
- 1 If it is not already running, start the **Keysight Connection Expert** software.



**Figure 14** Keysight Connection Expert software

- 2 Attach the instrument to the USB. The first time you attach the instrument, follow the instructions on the screen to select the driver for this instrument.

When the instrument is connected, it is shown in the list.



**Figure 15** Select the instrument in the list

- 3 Select the instrument in the list to see the associated tasks (in the Task Guide on the left) and information (on the right).

# 1 Getting Started

## Finding the IP Address of an instrument

- 1 Connect to the instrument over USB, as described above.
- 2 Select the instrument in the list.

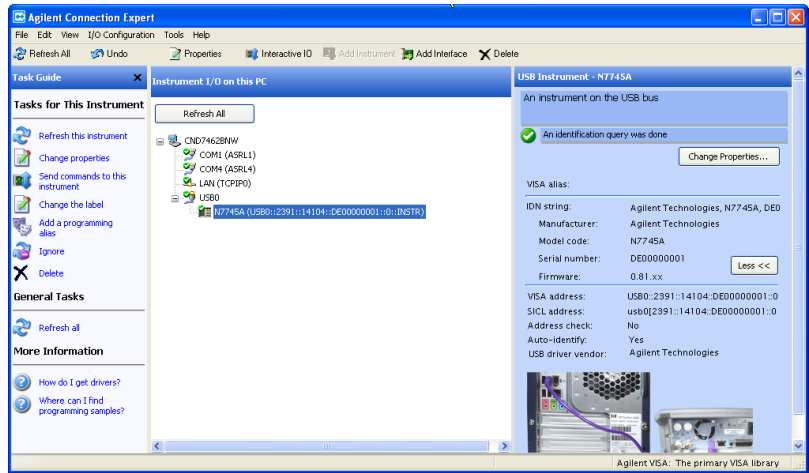


Figure 16 Select the instrument

- 3 Click on **Send commands to this instrument**.  
The default command is the \*IDN? query.

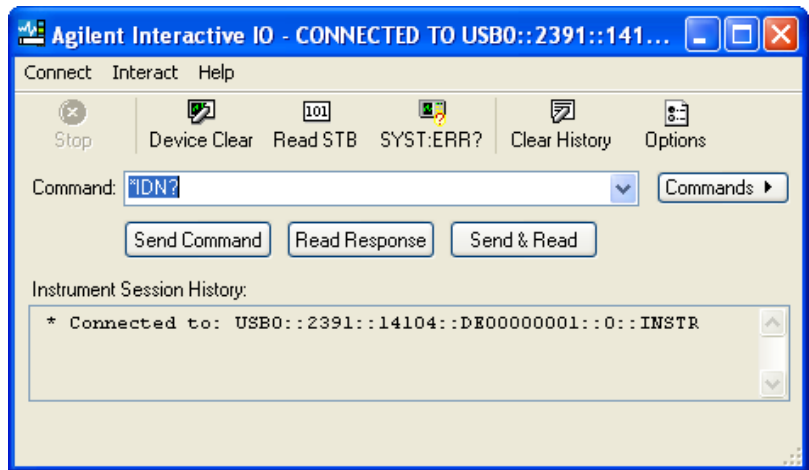
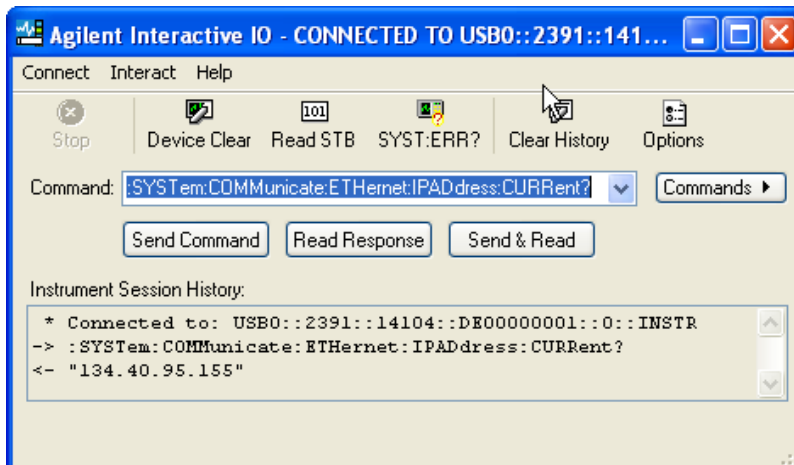


Figure 17 \*IDN? query

- 4 Enter the command  
:SYSTem:COMMunicate:ETHernet:IPAddress:CURRent?

then click on **[Send & Read]**.

The instrument returns its current IP address.



**Figure 18** :SYSTem:COMMunicate:ETHernet:IPADdress:CURRent?

## Connecting over LAN

### NOTE

The screenshots show the Keysight N7745A Multiport Power Meter. The same procedure applies when connecting to other N77xx instruments like attenuators, switches and laser sources.

- 1 Make sure the instrument is connected to the LAN, and that the LAN LED on the front panel is green. See, [“LAN Interface” on page 21](#) for more information to connecting over LAN.
- 2 If it is not already running, start the **Keysight Connection Expert** software.
- 3 Select **LAN (TCPIP0)** in the list.



# 1 Getting Started

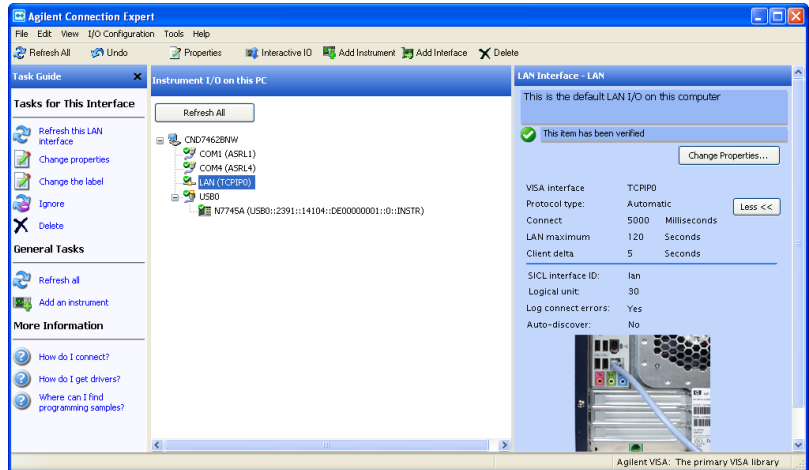


Figure 19

- 4 Click on **Add an instrument** in the **Task Guide**.
- 5 Wait for the scan to finish.
- 6 Select the instrument in the list.

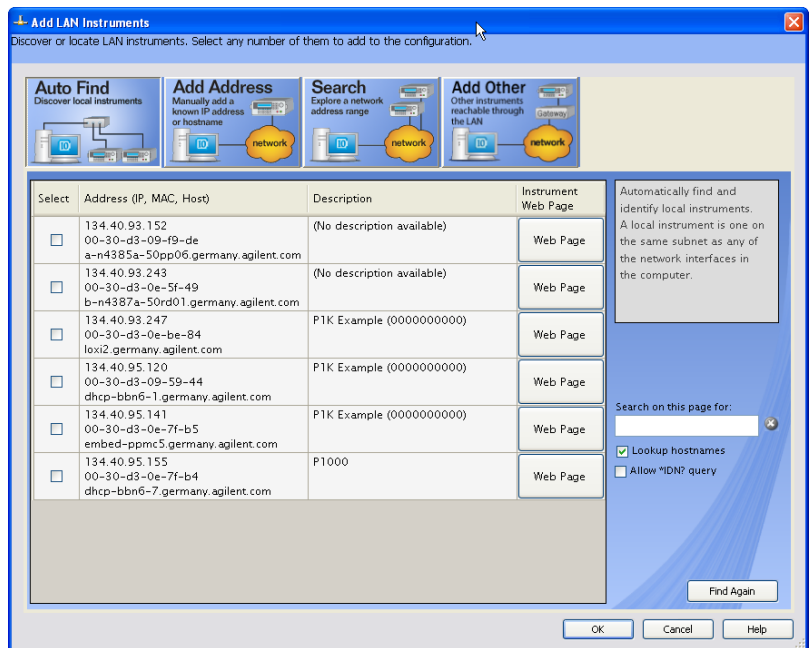


Figure 20

- 7 To show the description of the instrument, check the box for **\*IDN?** query and click on **Find Again**.

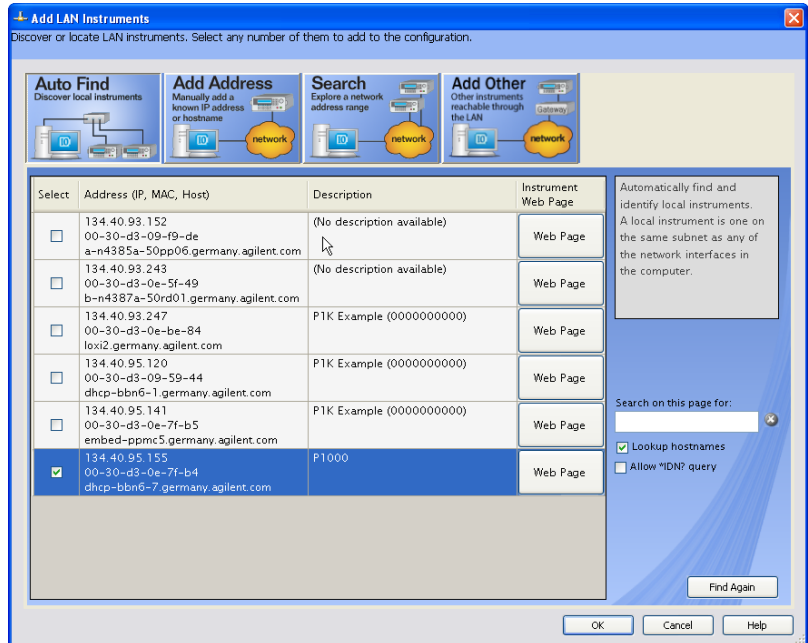
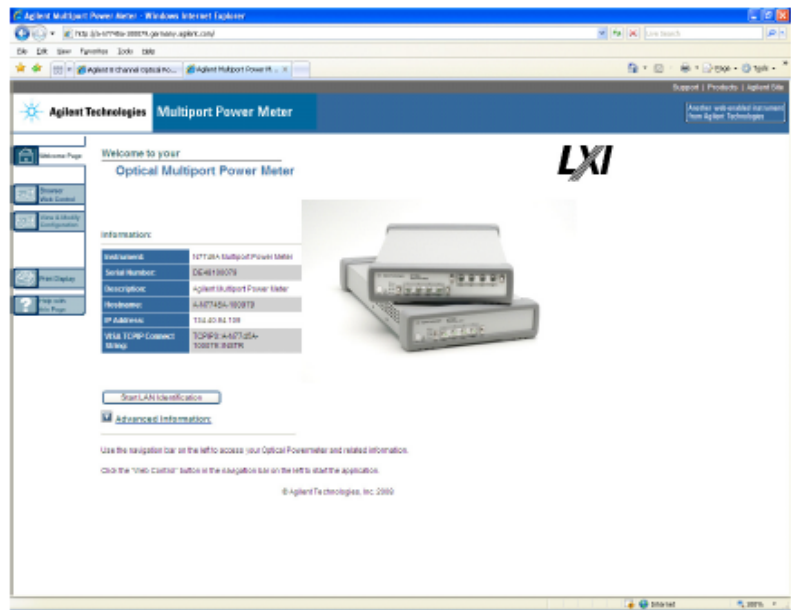


Figure 21

- 8 Select the instrument in the list to see the associated tasks (in the Task Guide on the left) and information (on the right).
  - For the N774x Multiport power meters, click on the **Instrument Web Interface** button to control the instrument directly.

## 1 Getting Started



**Figure 22**

If it is not already installed, you will need to install a Java runtime engine to use this page.

Basic configuration and functionality are available from this web page.

- For the attenuators, and as an alternative for the power meters, you can control any of the instruments from the Keysight N77xx Viewer. Connecting and using the N77xx Viewer is described in next section.

More advanced functionality is available through programming with SCPI commands (described in the Programming Guide available on the CD supplied with the instrument or from [www.keysight.com](http://www.keysight.com)), or using the 816x VXI Plug&Play driver, version 4 or higher.

## N77xx Viewer Common User Interface Functions

### Software Installation

The N77xx Viewer is a small user interface program that can be installed on a computer with Windows operating system. The installation package is distributed on the instrument CD and is available on the internet via the Package Manager at [www.keysight.com/find/n7700](http://www.keysight.com/find/n7700).

Using the Viewer also requires a VISA package to be installed, usually with the Keysight IO Library Suite.

### Connecting to an Instrument

When you first launch the N77xx Viewer, it is not connected to any of your instruments.

- 1 Click on the **Connect** icon at the top right of the window.
- 2 Select the instrument to which you want to connect from the list.

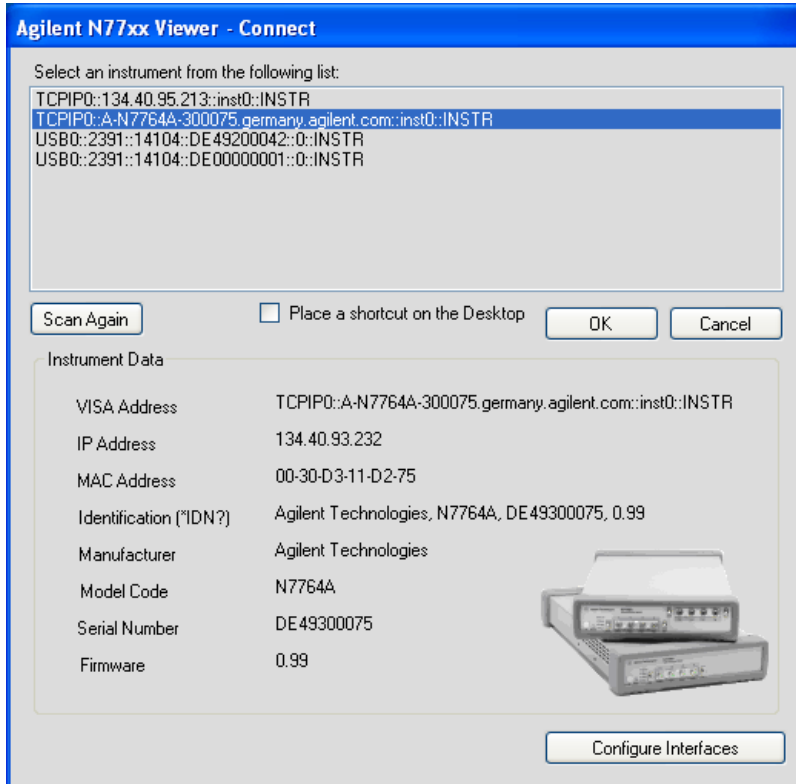


Figure 23 Connecting to an Instrument

3 The list shows instruments that have been given a VISA address.

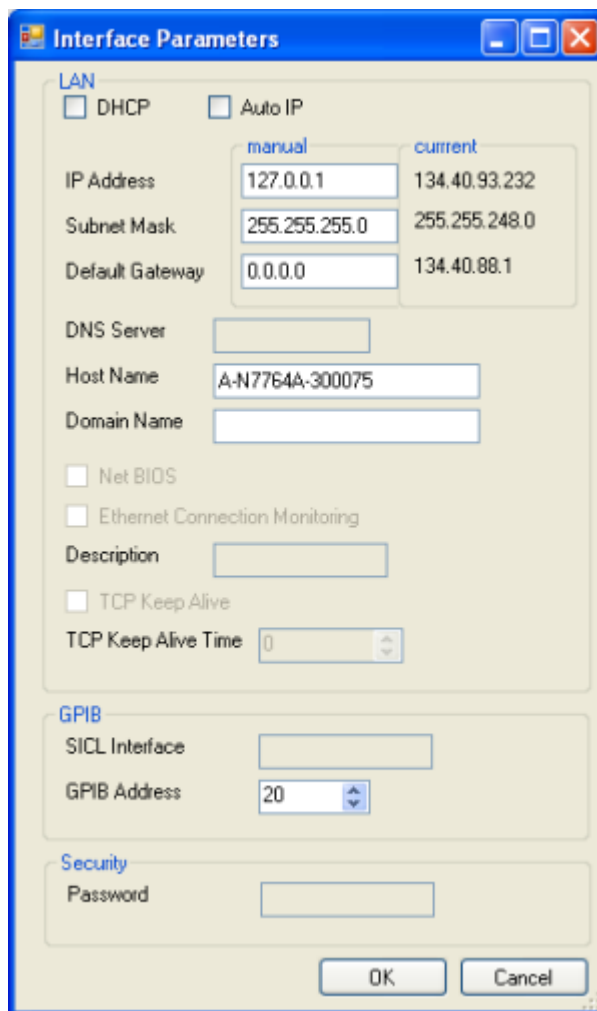
If your instrument is not in the list,

- Use the Keysight Connection Expert to check your instrument has a VISA address
- Click on the **Scan Again** button.

Once communication has been established to the instrument, its details are shown.

4 If you need to change the connection configuration for an instrument on the LAN, click on the **Configure Interfaces** button.

You can only configure the LAN parameters before the instrument is connected.



**Figure 24** Interface Parameters

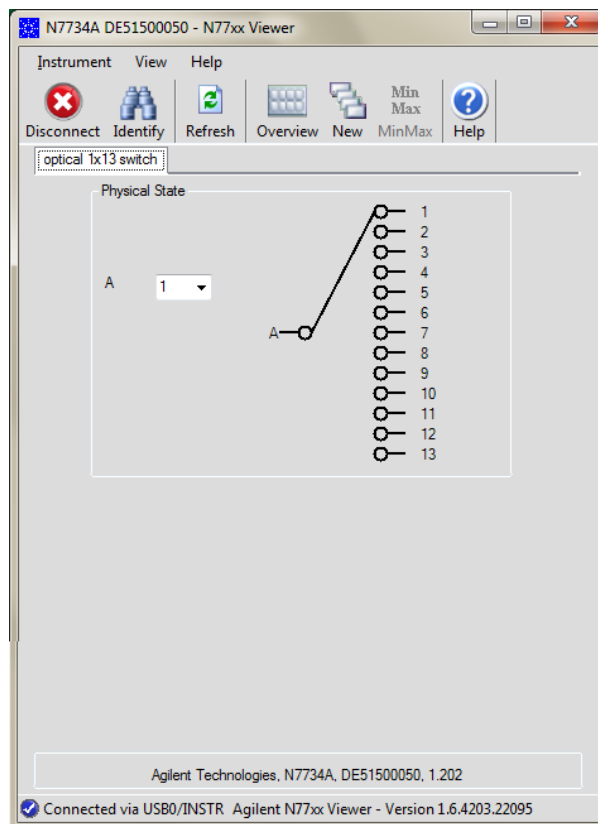
- Make sure both DHCP and Auto IP are not selected.
  - You can now edit the IP parameters.
- 5** For instruments you use regularly, you can add a link on your desktop by putting a check mark in the box to **Place a shortcut on the Desktop**.
  - 6** Click on the **OK** button to finish the connection.

## Viewing Measurements and Settings

The settings and readings of the instrument can be accessed directly from the main Viewer panel. Instruments with multiple channels have a tab for each channel. In addition, separate windows can be opened for simply viewing the settings and readings, as follows.

### Viewing a single channel

- 1 Click on the **New** button to open a window with the current measurement and parameter settings.



**Figure 25** Viewing the measurement on a single channel attenuator/power meter (left) or tunable laser (right)

## Viewing all channels

- 1 Click on **Overview** to open a window with the measurements on all channels.

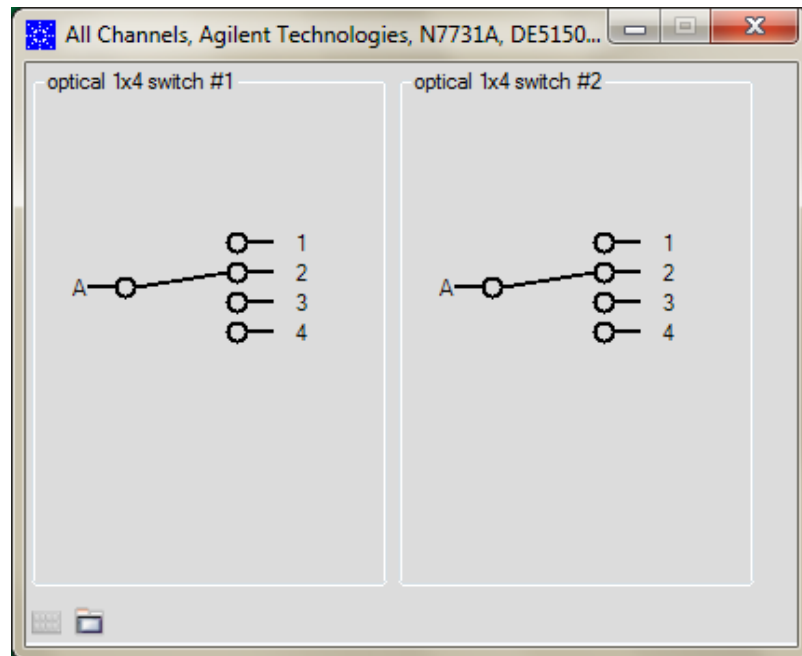


Figure 26 Viewing all channels

## Saving and Recalling Configurations

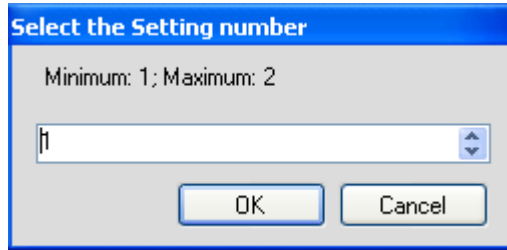
### Saving a configuration

You can save the current measurement configuration to either of two settings stored on the instrument.

- 1 In the **File** menu, select **Save**.
- 2 Enter or select the setting to which you want to save it.



## 1 Getting Started



**Figure 27** Saving a configuration

- 3 Click on the **OK** button.

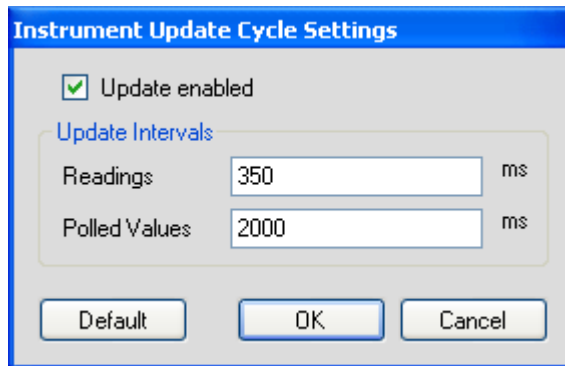
### Recalling a configuration

- 1 In the **File** menu, select **Load**.
- 2 Enter or select the setting you want to retrieve.
- 3 Click on the **OK** button.

## Controlling the Instrument Refresh

- 1 In the **File** menu, select **Update**.

In the dialog, you can :



**Figure 28** Controlling the Instrument Refresh

- Stop and start the display of all changes. Make sure to put a check in the box for **Update enabled**, to enable the N77xx Viewer to display the status and results from the instrument. If there is no

check in the box for **Update enabled**, the display is not updated with the replies to queries sent to the instrument.

- Set the update interval for **Readings** to control how often the result is read from the instrument and the display updated.
  - Set the update interval for **Polled Values** to control how often the measurement parameters are read from the instrument and the display updated. This is useful if, for example, more than one person can control the instrument.
- 2 When you have set all the values, click on the **OK** button.

## **1 Getting Started**

## 2 Switch Operation

### Using the Optical Switch

This chapter describes how to use the Keysight N773x optical switches, particularly with the N77xx Viewer or web-based control software. For use in an automated setup, please refer also to the N77-Series Programming Guide.

#### Controlling the Optical Switch

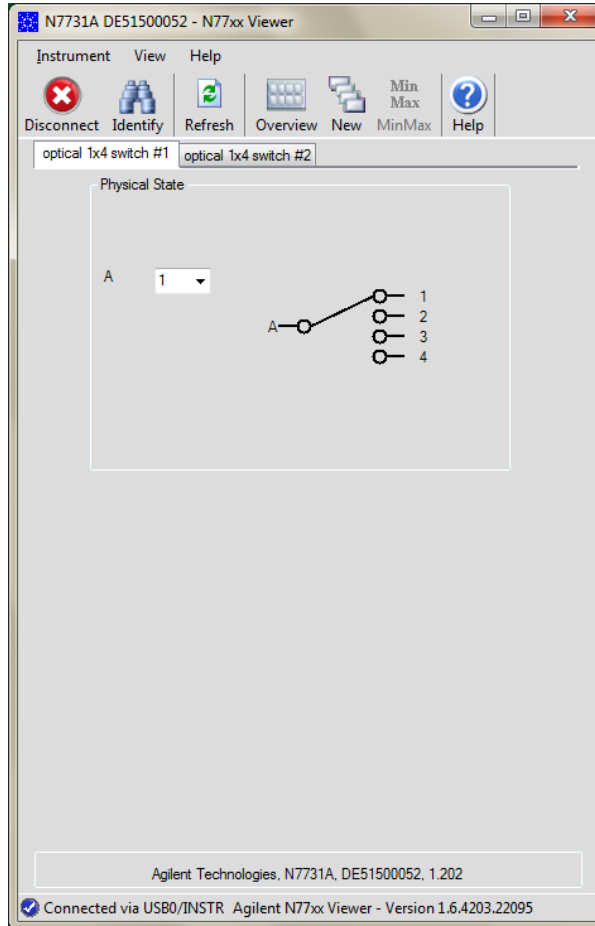
There are different possibilities to control the instrument:

- **LAN / USB / GPIB Connection:** [N77xx Viewer]
- **LAN / USB / GPIB:** Programming with SCPI commands (described in the Programming Guide available on the CD supplied with the instrument or from [www.keysight.com](http://www.keysight.com)), or associated drivers, including the 816x VXI Plug&Play driver.

To connect to the instrument see “[Input and Output Connectors - Overview](#)” on page 18.

For manual control and for checking the settings the N77xx Viewer is a convenient tool. The desired signal routing can be selected directly from the Viewer panel.

## 2 Switch Operation



**Figure 29** The Viewer

The Viewer is available to download with the N7700A Package Manager or from the product webpage which you can access at

<http://www.keysight.com/find/jet>

Then select the tab **Technical Support** followed by **Drivers & Software**.

On this webpage you will also find additional software tools like:

- Firmware update utility
- Firmware update file
- VXI Plug&Play Drivers

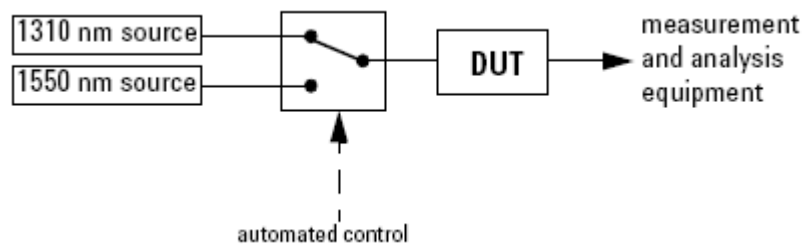
## Typical Applications

### Overview

The following section shows just a few of the possibilities available for use of the switch modules to achieve better test automation, and test repeatability.

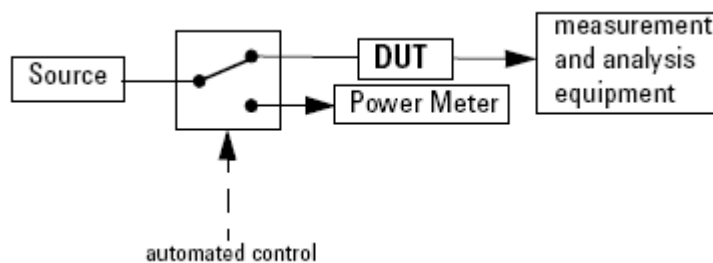
### 1 x 2 Switch

Select one of two different sources (different wavelengths) as the input to the DUT.



**Figure 30** Laser source selection

Select different measurement and analysis paths. In the following diagram the switch is used to select between the measurement path and the calibration path.

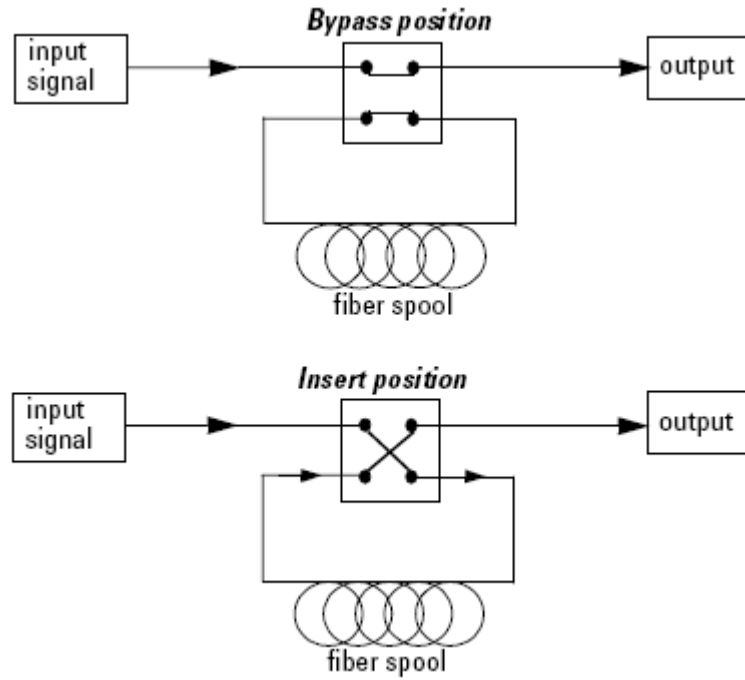


**Figure 31** Measurement path selection

## 2 Switch Operation

### 2 x 2 Switch

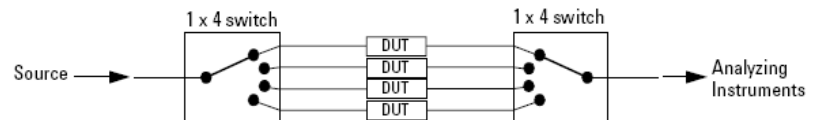
Select an optional optical path, in the case shown here it is a fiber spool.



**Figure 32** Circuit selection with crossover switch (for example in dispersion penalty test setup)

### 1 x 4 Switch

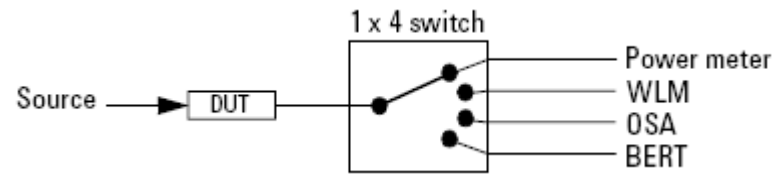
Select one from several test objects in parallel test setups, as shown in the following diagram.



**Figure 33** Selection of one from several DUTs in parallel test setups

Alternatively this switch can be used to automatically select one from up to four different analyzing instruments. Once again there are

advantages to be gained through the speed in changing the test setup, and the repeatability of measurements.



**Figure 34** Selection of one from several analyzing instruments



## **2 Switch Operation**

# 3

## Specifications and Regulations Compliance

### Definition of Terms

This section defines terms that are used both in this manual.

**Specification:** describes a guaranteed product performance that is valid under the specified conditions. (The confidence level used is 95%, as recommended by the ISO standard).

**Typical value:** a characteristic describing the product performance that is usually met but not guaranteed.

### Actuation Cycle

A consecutive transition through all switch-states.

### Crosstalk

The maximum ratio between the power on a non-selected output port and the incident power on any input port, expressed in dB. The cross talk  $x_j$  for any output port  $i$  is calculated from:

$$x_j = \text{MAX} \{P_j[\text{dBm}] - P_a[\text{dBm}]\}$$

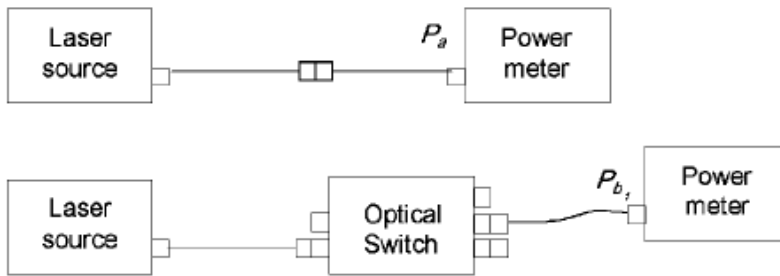
Where:

$P_a$  = power measured at the end of the two patch cords (see drawing)

$P_j$  = power measured at the switch output port.

$\text{MAX}\{\}$  is the maximum value over all non-transmitting switch positions and all input ports.

### 3 Specifications and Regulations Compliance



**Figure 35** Crosstalk measurement Setup

#### Insertion loss (IL)

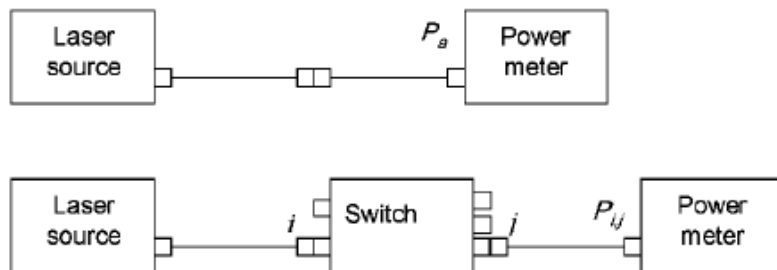
The change of power level after inserting the optical switch set to transmission between two connectorized patchcords, expressed in dB. The insertion loss from input port i to output port j is calculated from:

$$IL_{i,j} [\text{dB}] = P_a [\text{dBm}] - P_{i,j} [\text{dBm}]$$

Where:

$P_a$  = power measured at the end of the two connected patch cords (see drawing).

$P_{b,i,j}$  = power measured at the switch output port j.



**Figure 36** Insertion Loss Test Setup

**Conditions:** Wavelength as specified. Using patchcords with high quality connectors in perfect optical condition.

**NOTE**

Insertion loss includes the loss of one additional connection.

### Maximum Input power

The input power level for which the specifications apply and that can be applied to the optical switch without permanent change of its characteristics.

**CAUTION**

Applying more than the specified maximum input power may damage the device!

---

### Operating Temperature

The range of ambient temperatures for which the specifications apply.

**NOTE**

For a device mounted in a rack the environmental conditions within the rack apply.

---

### Polarization dependent loss (PDL)

The dependence of the Insertion loss (IL) on the input polarization state, expressed as the difference (in dB) between the lowest and highest insertion loss (peak-to-peak).

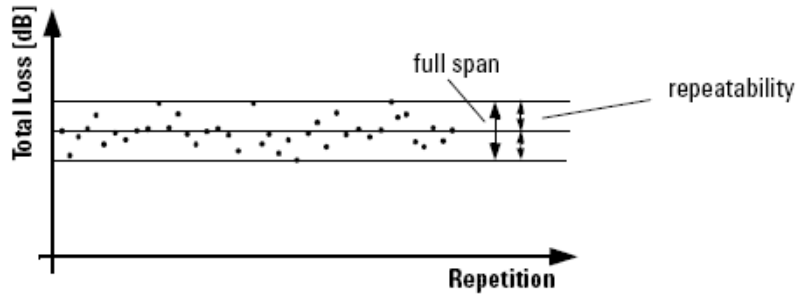
### Reference Connector

Connector with perfect optical quality. Depending on the option, straight or angled FC.

### Repeatability

The uncertainty in reproducing the Insertion loss (IL) after repeated Actuation Cycle. The repeatability is  $\pm$  half the span between the maximum and the minimum values, expressed in dB.

### 3 Specifications and Regulations Compliance



**Figure 37** Repeatability

**Conditions:** Number of repetitions as specified. Uninterrupted line voltage, constant temperature, constant humidity, constant wavelength, constant input power level, and constant polarization state.

#### Return loss

Minimum ratio between incident power and reflected power over all switch states, expressed in dB. The return loss RL for any input port is calculated from:

$$RL [dB] = \text{MIN}_s \{ P_{\text{inc}} [dBm] - P_{\text{ref}} [dBm] \}$$

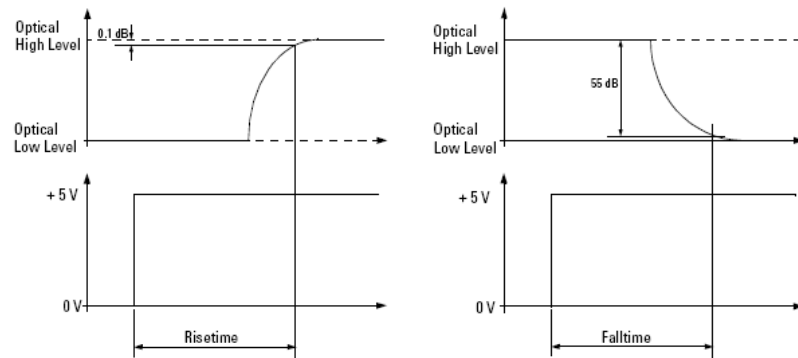
Where:

Where  $P_{\text{inc}}$  is the incident power,  $P_{\text{ref}}$  is the reflected power and  $\text{MIN}_s\{ \}$  is the minimum over all switch states.

**Conditions:** Termination patchcords with high quality connectors connected to the output ports. All optical connectors in perfect optical condition.

#### Switching Time

Maximum time needed to stabilize the optical output power when switching. This is applicable for all input-output combinations and for risetime and falltime, as described in the figure below.



**Figure 38** Switching Time

**NOTE**

Switching time excludes the time needed for the interpretation of the command and for the internal communication between the mainframe and the optical switch module.

### Wavelength range

Specifies the wavelength range for which the specifications apply (if not differently stated).

### Literature

- 1 Fiber optic test and measurement, Hewlett Packard Professional Books, edited by Prentice Hall, ISBN 0-13-534330-5
- 2 GR -1073-CORE, Generic Requirements for Single Mode Fiber Optic Switches (Issue 1, January 2001, Telcordia Technologies)

### 3 Specifications and Regulations Compliance

## Technical Specifications - Optical Switch

N7731A		
Switch type	Dual 1x4	
Fiber interface	# 009 single mode	# 062 multimode
Fiber type	9/125 $\mu\text{m}$ SMF	62.5/125 $\mu\text{m}$ MMF <sup>1</sup>
Connectivity	FC/APC - angled, narrow key	FC/PC straight
Wavelength range	1250 nm to 1650 nm	600 nm to 1700 nm
Repeatability <sup>2</sup>	$\pm 0.01$ dB, $\pm 0.004$ dB typical	$\pm 0.01$ dB <sup>1</sup> , $\pm 0.004$ dB typical
Insertion loss	< 2.0 dB, < 1.5 dB typical <sup>3</sup>	< 1.0 dB <sup>1</sup> , < 0.5 dB typical <sup>4</sup>
Polarization dependent loss	Typical 0.07 dB <sub>pp</sub>	NA
Return loss	Typical 55 dB	Typical 35 dB
Crosstalk	Typical -65 dB	Typical -65 dB <sup>4</sup>
Switching time	< 20 ms	
Lifetime	> 1 billion cycles	
Maximum input power	+23 dBm	

N7734A		
Switch type	1x13	
Fiber interface	# 009 single mode	# 062 multimode
Fiber type	9/125 $\mu\text{m}$ SMF	62.5/125 $\mu\text{m}$ MMF <sup>1</sup>
Connectivity	FC/APC - angled, narrow key	FC/PC straight
Wavelength range	1250 nm to 1650 nm	600 nm to 1700 nm
Repeatability <sup>2</sup>	$\pm 0.01$ dB, $\pm 0.004$ dB typical	$\pm 0.01$ dB <sup>1</sup> , $\pm 0.004$ dB typical
Insertion loss	< 2.5 dB, < 2.2 dB typical <sup>3</sup>	< 1.2 dB <sup>1</sup> , < 0.7 dB typical <sup>4</sup>
Polarization dependent loss	Typical 0.12 dB <sub>pp</sub>	NA
Return loss	Typical 55 dB	Typical 30 dB
Crosstalk	Typical -60 dB	Typical -55 dB <sup>4</sup>
Switching time	< 20 ms	
Lifetime	> 1 billion cycles	
Maximum input power	+23 dBm	

1. Specifications are typical with 50/125  $\mu\text{m}$  multimode fiber.
2. Worst case measurement deviation over 10,000 random switching cycles.
3. At (1310  $\pm 15$ ) and (1550  $\pm 15$ ) nm.
4. At (850  $\pm 15$ ) and (1310  $\pm 15$ ) nm and for mode launch conditions from IEEE 802.3 : Encircled flux < 25% in 4.5  $\mu\text{m}$  radius and > 75% inside 15  $\mu\text{m}$  for 62.5/125  $\mu\text{m}$  fiber.

## General Characteristics – Optical Switch

General characteristics	
Dimensions (D x W x H)	1U half-rack, 460 mm x 212 mm x 43 mm (excluding front and back rubber cushions and handle)
Weight	Approx. 3 kg
Recommended recalibration period	24 months
Operating temperature	+5 °C to +40 °C
Operating humidity	15% to 95%, non-condensing
Altitude	The maximum operating altitude is 2000 m.
Pollution protection	The Agilent N773xA is designed for pollution degree 2.
Warm-up time	20 minutes
Interfaces	The instruments can be controlled via LAN, USB or GPIB interfaces
Power consumption	Line power: AC 100 - 240 V $\pm$ 10%, 50/60 Hz, 60 VA max.



## Declarations of Conformity - Optical Switch

The latest version of the Declaration of Conformity can be found here  
<http://www.keysight.com/go/conformity>



**Manufacturer's Name:** Keysight Technologies Deutschland GmbH  
**Manufacturer's Address:** Herrenberger Strasse 130  
 D-71034 Boeblingen  
 Germany

**Declares under sole responsibility that the product as originally delivered**

**Product Name:** Optical Multiport Switch  
**Model Number:** N7731A 2-Channel 1x4 Optical Switch  
 N7734A 1-Channel 1x13 Optical Switch  
**Product Options:** This declaration covers all options of the above system.

**complies with the essential requirements of the following applicable European Directives, and carries the CE marking accordingly:**

- The Low Voltage Directive 2006/95/EC
- The EMC Directive 2004/108/EC

**and conforms with the following product standards:**

<b>EMC</b>	<b>Standard</b>	<b>Limit</b>
	IEC 61326-1:2012 / EN 61326-1:2013	
	<i>Reference Standards</i>	
	CISPR 11:2009+A1:2010 / EN 55011:2009+A1:2010	Group 1 Class A
	IEC 61000-4-2:2008 / EN 61000-4-2:2009	4 kV CD, 8 kV AD
	IEC 61000-4-3:2006+A1:2007+A2:2010 / EN 61000-4-3:2006+A1:2008+A2:2010	3 V/m / 80 MHz-2 GHz, 1V/m / 2-2.7 GHz
	IEC 61000-4-4:2004+A1:2010 / EN 61000-4-4:2004+A1:2010	0.5 kV signal lines, 1 kV power lines
	IEC 61000-4-5:2005 / EN 61000-4-5:2006	0.5 kV line-line, 1 kV line-ground
	IEC 61000-4-6:2008 / EN 61000-4-6:2009	3 V, 0.15-80 MHz
	IEC 61000-4-11:2004 / EN 61000-4-11:2004	0% for 1 / 0.5 (0°, 180°) cycle
		0% for 250 / 300 cycles
		70% for 25 / 30 cycles
	Canada: ICES/NMB-001:2006	
	Australia/New Zealand: AS/NZS CISPR 11:2011	
<b>Safety</b>	IEC 61010-1:2010 / EN 61010-1:2010	
	Canada: CAN/CSA-C22.2 No. 61010-1-04	
	USA: ANSI/UL 61010-1:2004	

**Supplementary Information:**

The product was tested in a typical configuration with Keysight Technologies test systems. This DoC applies to above-listed products placed on the EU market after:

2014-August-01  
 Date



Hans-Martin Fischer

Product Quality & Compliance

For further information, please contact your local Keysight Technologies sales office, agent or distributor. Or Keysight Technologies Deutschland GmbH, Herrenberger Strasse 130, 71304 Boeblingen, Germany

## Regulations Information

### EMC Canada

These ISM devices comply with Canadian ICES-001. Ces appareils ISM sont conformes à la norme NMB-001 du Canada.

### Acoustic Noise Information Germany

ISO 7779  $L_{pA} < 70$  dB(A), normal operation, operator position.

## Remove all doubt

### Remove all doubt

Our repair and calibration services will get your equipment back to you, performing like new, when promised. You will get full value out of your Keysight equipment throughout its lifetime. Your equipment will be serviced by Keysight-trained technicians using the latest factory calibration procedures, automated repair diagnostics and genuine parts. You will always have the utmost confidence in your measurements. Keysight offers a wide range of additional expert test and measurement services for your equipment, including initial start-up assistance, onsite education and training, as well as design, system integration, and project management. For more information on repair and calibration services, go to

[www.keysight.com/find/removealldoubt](http://www.keysight.com/find/removealldoubt)

### Keysight E-mail Updates

Get the latest information on the products and applications you select.

### 3 Specifications and Regulations Compliance



[www.keysight.com/find/emailupdates](http://www.keysight.com/find/emailupdates)

#### Keysight Direct

Quickly choose and use your test equipment solutions with confidence.



[www.keysight.com/find/mykeysight](http://www.keysight.com/find/mykeysight)

#### Keysight Open

Keysight Open simplifies the process of connecting and programming test systems to help engineers design, validate and manufacture electronic products. Keysight offers open connectivity for a broad range of systemready instruments, open industry software, PC-standard I/O and global support, which are combined to more easily integrate test system development.



[www.keysight.com/find/open](http://www.keysight.com/find/open)

#### LXI

LXI is the LAN-based successor to GPIB, providing faster, more efficient connectivity. Keysight is a founding member of the LXI consortium.



[www.lxistandard.org](http://www.lxistandard.org)

**[www.keysight.com](http://www.keysight.com)**

For more information on Keysight Technologies products, applications and services, please contact your local Keysight office. The complete list is available at:

[www.keysight.com/find/contactus](http://www.keysight.com/find/contactus)

### **3 Specifications and Regulations Compliance**

# 4

## Instrument Options and Accessories

### Instrument Option and Accessories - Overview

The instruments are available in various configurations for the best possible match to the most common applications.

This chapter provides information on the available options and accessories.

## Instrument and Options - Keysight N7731A and N7734A

All systems have 3 year warranty

### Model number

N7731A      Optical switch with dual 1x4 switch configuration

N7734A      Optical switch with 1x13 switch configuration

### Fiber type option

-009      9/125  $\mu\text{m}$  single-mode fiber and FC/APC connectors

-062      62.5/125  $\mu\text{m}$  multimode fiber and FC/PC connectors

### Accessories

N7744-100      Rack mount kit for 1 or 2 units of same depth

### Warranty

All systems have 3 year warranty

## Cables

- GPIB Cable, 10833A, 1 m (3.3 feet)
- GPIB Cable, 10833B, 2 m (6.6 feet)
- GPIB Cable, 10833C, 4 m (13.2 feet)
- GPIB Cable, 10833D, 0.5 m (1.6 feet)

- GPIB Adapter, 10834A, 2.3 cm extender. Use this adapter if there is no space to connect your GPIB cable directly to a GPIB interface.
- USB Cable, 8121-1243, 2 m (6.6 feet)
- Cross-over LAN cable, 5061-0701, 2.1 m (7 feet)



## **4 Instrument Options and Accessories**

# 5

## Maintenance and Troubleshooting

### Maintenance and Troubleshooting - Overview

This section provides detailed information on:

- Cleaning Instructions
- Firmware Upgrades
- Error Messages
- Data Sanitation

### Cleaning Instructions

#### Cleaning Instructions

The following Cleaning Instructions contain some general safety precautions, which must be observed during all phases of cleaning. Consult your specific optical device manuals or guides for full information on safety matters.

Please try, whenever possible, to use physically contacting connectors, and dry connections. Clean the connectors, interfaces, and bushings carefully after use.

If you are unsure of the correct cleaning procedure for your optical device, we recommend that you first try cleaning a dummy or test device.

Keysight Technologies assume no liability for the customer's failure to comply with these requirements.

## Cleaning Instructions for this Instrument

The Cleaning Instructions apply to a number of different types of Optical Equipment. Most relevant for this instrument is the section “[How to clean connector adapters](#)” on page 75 for cleaning the quad-adapters, and “[How to clean optical glass plates](#)” on page 76 for cleaning the front of the instrument.

## Safety Precautions

Please follow the following safety rules:

- Do not remove instrument covers when operating.
- Ensure that the instrument is switched off throughout the cleaning procedures.
- Use of controls or adjustments or performance of procedures other than those specified may result in hazardous radiation exposure.
- Make sure that you disable all sources when you are cleaning any optical interfaces.
- Under no circumstances look into the end of an optical device attached to optical outputs when the device is operational. The laser radiation is not visible to the human eye, but it can seriously damage your eyesight.
- To prevent electrical shock, disconnect the instrument from the mains before cleaning. Use a dry cloth, or one slightly dampened with water, to clean the external case parts. Do not attempt to clean internally.
- Do not install parts or perform any unauthorized modification to optical devices.
- Refer servicing only to qualified and authorized personnel.

## Why is it important to clean optical devices?

In transmission links optical fiber cores are about 9  $\mu\text{m}$  (0.00035") in diameter. Dust and other particles, however, can range from tenths to hundredths of microns in diameter. Their comparative size means that they can cover a part of the end of a fiber core, and as a result will reduce the performance of your system.

Furthermore, the power density may burn dust into the fiber and cause additional damage (for example, 0 dBm optical power in a single mode fiber causes a power density of approximately 16 million W/m<sup>2</sup>). If this happens, measurements become inaccurate and non-repeatable.

Cleaning is, therefore, an essential yet difficult task. Unfortunately, when comparing most published cleaning recommendations, you will discover that they contain several inconsistencies. In this section, we want to suggest ways to help you clean your various optical devices, and thus significantly improve the accuracy and repeatability of your lightwave measurements.

## What do I need for proper cleaning?

Some Standard Cleaning Equipment is necessary for cleaning your instrument. For certain cleaning procedures, you may also require certain Additional Cleaning Equipment.

### Standard Cleaning Equipment

Before you can start your cleaning procedure you need the following standard equipment:

- Dust and shutter caps
- Isopropyl alcohol
- Cotton swabs
- Soft tissues
- Pipe cleaner
- Compressed air

### Dust and shutter caps

All of Keysight Technologies' lightwave instruments are delivered with either laser shutter caps or dust caps on the lightwave adapter. Any cables come with covers to protect the cable ends from damage or contamination.

We suggest these protected coverings should be kept on the equipment at all times, except when your optical device is in use. Be careful when replacing dust caps after use. Do not press the bottom of the cap onto the fiber too hard, as any dust in the cap can scratch or pollute your fiber surface.

## 5 Maintenance and Troubleshooting

If you need further dust caps, please contact your nearest Keysight Technologies sales office.

### Isopropyl alcohol

This solvent is usually available from any local pharmaceutical supplier or chemist's shop.

If you use isopropyl alcohol to clean your optical device, do not immediately dry the surface with compressed air (except when you are cleaning very sensitive optical devices). This is because the dust and the dirt is solved and will leave behind filmy deposits after the alcohol is evaporated. You should therefore first remove the alcohol and the dust with a soft tissue, and then use compressed air to blow away any remaining filaments.

If possible avoid using denatured alcohol containing additives. Instead, apply alcohol used for medical purposes. Never try to drink this alcohol, as it may seriously damage to your health.

Do not use any other solvents, as some may damage plastic materials and claddings. Acetone, for example, will dissolve the epoxy used with fiber optic connectors. To avoid damage, only use isopropyl alcohol.

### Cotton swabs

We recommend that you use swabs such as Q-tips or other cotton swabs normally available from local distributors of medical and hygiene products (for example, a supermarket or a chemist's shop). You may be able to obtain various sizes of swab. If this is the case, select the smallest size for your smallest devices.

Ensure that you use natural cotton swabs. Foam swabs will often leave behind filmy deposits after cleaning.

Use care when cleaning, and avoid pressing too hard onto your optical device with the swab. Too much pressure may scratch the surface, and could cause your device to become misaligned. It is advisable to rub gently over the surface using only a small circular movement.

Swabs should be used straight out of the packet, and never used twice. This is because dust and dirt in the atmosphere, or from a first cleaning, may collect on your swab and scratch the surface of your optical device.

### Soft tissues

These are available from most stores and distributors of medical and hygiene products such as supermarkets or chemists' shops.

We recommend that you do not use normal cotton tissues, but multi-layered soft tissues made from non-recycled cellulose. Cellulose tissues are very absorbent and softer. Consequently, they will not scratch the surface of your device over time.

Use care when cleaning, and avoid pressing on your optical device with the tissue. Pressing too hard may lead to scratches on the surface or misalignment of your device. Just rub gently over the surface using a small circular movement.

Use only clean, fresh soft tissues and never apply them twice. Any dust and dirt from the air which collects on your tissue, or which has gathered after initial cleaning, may scratch and pollute your optical device.

### **Pipe cleaner**

Pipe cleaners can be purchased from tobacconists, and come in various shapes and sizes. The most suitable one to select for cleaning purposes has soft bristles, which will not produce scratches.

There are many different kinds of pipe cleaner available from tobacco shops.

The best way to use a pipe cleaner is to push it in and out of the device opening (for example, when cleaning an interface). While you are cleaning, you should slowly rotate the pipe cleaner.

Only use pipe cleaners on connector interfaces or on feed through adapters. Do not use them on optical head adapters, as the center of a pipe cleaner is hard metal and can damage the bottom of the adapter.

Your pipe cleaner should be new when you use it. If it has collected any dust or dirt, this can scratch or contaminate your device.

The tip and center of the pipe cleaner are made of metal. Avoid accidentally pressing these metal parts against the inside of the device, as this can cause scratches.

### **Compressed air**

Compressed air can be purchased from any laboratory supplier.

It is essential that your compressed air is free of dust, water and oil. Only use clean, dry air. If not, this can lead to filmy deposits or scratches on the surface of your connector. This will reduce the performance of your transmission system.

When spraying compressed air, hold the can upright. If the can is held at a slant, propellant could escape and dirty your optical device. First spray into the air, as the initial stream of compressed air could contain

some condensation or propellant. Such condensation leaves behind a filmy deposit.

Please be friendly to your environment and use a CFC-free aerosol.

### **Additional Cleaning Equipment**

Some Cleaning Procedures need the following equipment, which is not required to clean each instrument:

- Microscope with a magnification range about 50X up to 300X
- Ultrasonic bath
- Warm water and liquid soap
- Premoistened cleaning wipes
- Polymer film
- Infrared Sensor Card

### **Microscope with a magnification range about 50X up to 300X**

A microscope can be found in most photography stores, or can be obtained through or specialist mail order companies. Special fiber-scopes are available from suppliers of splicing equipment.

Ideally, the light source on your microscope should be very flexible. This will allow you to examine your device closely and from different angles.

A microscope helps you to estimate the type and degree of dirt on your device. You can use a microscope to choose an appropriate cleaning method, and then to examine the results. You can also use your microscope to judge whether your optical device (such as a connector) is severely scratched and is, therefore, causing inaccurate measurements.

### **Ultrasonic bath**

Ultrasonic baths are also available from photography or laboratory suppliers or specialist mail order companies.

An ultrasonic bath will gently remove fat and other stubborn dirt from your optical devices. This helps increase the life span of the optical devices.

Only use isopropyl alcohol in your ultrasonic bath, as other solvents may damage.

### **Warm water and liquid soap**

Only use water if you are sure that there is no other way of cleaning your optical device without corrosion or damage. Do not use hot water, as this may cause mechanical stress, which can damage your optical device.

Ensure that your liquid soap has no abrasive properties or perfume in it. You should also avoid normal washing-up liquid, as it can cover your device in an iridescent film after it has been air-dried.

Some lenses and mirrors also have a special coating, which may be sensitive to mechanical stress, or to fat and liquids. For this reason we recommend you do not touch them.

If you are not sure how sensitive your device is to cleaning, please contact the manufacturer or your sales distributor.

### **Premoistened cleaning wipes**

Use pre-moistened cleaning wipes as described in each individual cleaning procedure. Cleaning wipes may be used in every instance where a moistened soft tissue or cotton swab is applied.

### **Polymer film**

Polymer film is available from laboratory suppliers or specialist mail order companies.

Using polymer film is a gentle method of cleaning extremely sensitive devices, such as reference reflectors and mirrors.

### **Infrared Sensor Card**

Infrared sensor cards are available from laboratory suppliers or specialist mail order companies.

With this card you are able to control the shape of laser light emitted. The invisible laser beam is projected onto the sensor card, then becomes visible to the normal eye as a round spot.

Take care never to look into the end of a fiber or any other optical component, when they are in use. This is because the laser can seriously damage your eyes.



## **Preserving Connectors**

Listed below are some hints on how best to keep your connectors in the best possible condition.

### **Making Connections**

Before you make any connection you must ensure that all cables and connectors are clean. If they are dirty, use the appropriate cleaning procedure.

When inserting the ferrule of a patchcord into a connector or an adapter, make sure that the fiber end does not touch the outside of the mating connector or adapter. Otherwise you will rub the fiber end against an unsuitable surface, producing scratches and dirt deposits on the surface of your fiber.

### **Dust Caps and Shutter Caps**

Be careful when replacing dust caps after use. Do not press the bottom of the cap onto the fiber as any dust in the cap can scratch or dirty your fiber surface.

When you have finished cleaning, put the dust cap back on, or close the shutter cap if the equipment is not going to be used immediately.

Keep the caps on the equipment always when it is not in use.

All of Keysight Technologies' lightwave instruments and accessories are shipped with either laser shutter caps or dust caps. If you need additional or replacement dust caps, contact your nearest Keysight Technologies Sales/Service Office.

### **Immersion Oil and Other Index Matching Compounds**

Where it is possible, do not use immersion oil or other index matching compounds with your device. They are liable to impair and dirty the surface of the device. In addition, the characteristics of your device can be changed and your measurement results affected.

## **Cleaning Instrument Housings**

Use a dry and very soft cotton tissue to clean the instrument housing and the keypad. Do not open the instruments as there is a danger of electric shock, or electrostatic discharge. Opening the instrument can

cause damage to sensitive components, and in addition your warranty will be voided.

Never open the instruments as they can be damaged. Opening the instruments puts you in danger of receiving an electrical shock from your device, and renders your warranty void.

## Which Cleaning Procedure should I use?

### Light dirt

If you just want to clean away light dirt, observe the following procedure for all devices:

- 1 Use compressed air to blow away large particles.
- 2 Clean the device with a dry cotton swab.
- 3 Use compressed air to blow away any remaining filament left by the swab.

### Heavy dirt

If the above procedure is not enough to clean your instrument, follow one of the procedures below. Please consult “[Cleaning Instructions for this Instrument](#)” on page 66 for the procedure relevant for this instrument.

If you are unsure of how sensitive your device is to cleaning, please contact the manufacturer or your sales distributor

## How to clean connectors

Cleaning connectors is difficult as the core diameter of a single-mode fiber is only about 9  $\mu\text{m}$ . This generally means you cannot see streaks or scratches on the surface. To be certain of the condition of the surface of your connector and to check it after cleaning, you need a microscope.

In the case of scratches, or of dust that has been burnt onto the surface of the connector, you may have no option but to polish the connector. This depends on the degree of dirtiness, or the depth of the scratches. This is a difficult procedure and should only be performed by skilled personal, and as a last resort as it wears out your connector.

**WARNING**

Never look into the end of an optical cable that is connected to an active source.

To assess the projection of the emitted light beam you can use an infrared sensor card. Hold the card approximately 5 cm from the output of the connector. The invisible emitted light is project onto the card and becomes visible as a small circular spot.

---

### Preferred Procedure

Use the following procedure on most occasions.

- 1 Clean the connector by rubbing a new, dry cotton-swab over the surface using a small circular movement.
- 2 Blow away any remaining lint with compressed air.

### Procedure for Stubborn Dirt

Use this procedure particularly when there is greasy dirt on the connector:

- 1 Moisten a new cotton-swab with isopropyl alcohol.
- 2 Clean the connector by rubbing the cotton-swab over the surface using a small circular movement.
- 3 Take a new, dry soft-tissue and remove the alcohol, dissolved sediment and dust, by rubbing gently over the surface using a small circular movement.
- 4 Blow away any remaining lint with compressed air.

### An Alternative Procedure

A better, more gentle, but more expensive cleaning procedure is to use an ultrasonic bath with isopropyl alcohol.

- 1 Hold the tip of the connector in the bath for at least three minutes.
- 2 Take a new, dry soft-tissue and remove the alcohol, dissolved sediment and dust, by rubbing gently over the surface using a small circular movement.
- 3 Blow away any remaining lint with compressed air.

## How to clean connector adapters

### Preferred Procedure

Use the following procedure on most occasions.

- 1 Clean the adapter by rubbing a new, dry cotton-swab over the surface using a small circular movement.
- 2 Blow away any remaining lint with compressed air.

### Procedure for Stubborn Dirt

Use this procedure particularly when there is greasy dirt on the adapter:

- 1 Moisten a new cotton-swab with isopropyl alcohol.
- 2 Clean the adapter by rubbing the cotton-swab over the surface using a small circular movement.
- 3 Take a new, dry soft-tissue and remove the alcohol, dissolved sediment and dust, by rubbing gently over the surface using a small circular movement.
- 4 Blow away any remaining lint with compressed air.

## How to clean bare fiber adapters

Bare fiber adapters are difficult to clean.

Protect from dust unless they are in use.

### CAUTION

Never use any kind of solvent when cleaning a bare fiber adapter as solvents can damage the foam inside some adapters.

They can deposit dissolved dirt in the groove, which can then dirty the surface of an inserted fiber.

---

### Preferred Procedure

Use the following procedure on most occasions.

- 1 Blow away any dust or dirt with compressed air.

### How to clean optical glass plates

The multiport power meter has an optical glass plate to protect the sensor. This has a special coating that is sensitive to solvents, grease, liquid and mechanical abrasion. Take extra care when cleaning this plate.

#### Preferred Procedure

Use the following procedure on most occasions.

- 1 Clean the plate by rubbing a new, dry cotton-swab over the surface using a small circular movement.
- 2 Blow away any remaining lint with compressed air.

#### Procedure for Stubborn Dirt

Use this procedure particularly when there is greasy dirt on the plate:

- 1 Moisten a new cotton-swab with isopropyl alcohol.
- 2 Clean the plate by rubbing the cotton-swab over the surface using a small circular movement.
- 3 Using a new, dry cotton-swab remove the alcohol, any dissolved sediment and dust.
- 4 Blow away any remaining lint with compressed air.

### Additional Cleaning Information

The following cleaning procedures may be used with other optical equipment:

- How to clean bare fiber ends

#### How to clean bare fiber ends

Bare fiber ends are often used for splices or, together with other optical components, to create a parallel beam. The end of a fiber can often be scratched. You make a new cleave. To do this:

- 1 Strip off the cladding.
- 2 Take a new soft-tissue and moisten it with isopropyl alcohol.
- 3 Carefully clean the bare fiber with this tissue.

- 4 Make your cleave and immediately insert the fiber into your bare fiber adapter in order to protect the surface from dirt.

## Other Cleaning Hints

Selecting the correct cleaning method is an important element in maintaining your equipment and saving you time and money. This Appendix highlights the main cleaning methods, but cannot address every individual circumstance.

This section contain some additional hints which we hope will help you further. For further information, please contact your local Keysight Technologies representative.

### Making the connection

Before you make any connection you must ensure that all lightwave cables and connectors are clean. If not, then use appropriate the cleaning methods.

When you insert the ferrule of a patchcord into a connector or an adapter, ensure that the fiber end does not touch the outside of the mating connector or adapter. Otherwise, the fiber end will rub up against something which could scratch it and leave deposits.

### Lens cleaning papers

Note that some special lens cleaning papers are not suitable for cleaning optical devices like connectors, interfaces, lenses, mirrors and so on. To be absolutely certain that a cleaning paper is applicable, please ask the salesperson or the manufacturer.

## Firmware Upgrades

Updated versions of the firmware for your instrument may be released from time to time. These will then be available from the Keysight web page ([www.keysight.com/find/octfirmware](http://www.keysight.com/find/octfirmware)) and will include the update application and instructions.

## Error Messages

### SYST:ERR?

The `syst:err?` command returns the next error from the error queue (refer to the Programming Guide for details).

Each error has an error code and a short description of the error, separated by comma. Please note that the error codes are returned as signed integer numbers in a range from -32768 to +32767 (INT16). Negative error numbers are defined by the SCPI standard, positive error numbers are device dependent.

## Data Sanitation

### Memory Inventory

The instruments have the following memory size:

**EEPROM** 3 Mb for N7734A. 4 Mb for N7731A. This memory does not contain any customer data.

**Flash ROM** 16 MB. This memory can contain calibration data, and so on, as well as user parameter settings, zeroing data and logged information (the log contains limited operational information).

**DRAM** 128 MB volatile working memory. This contains data for current and recent calibrating and measuring.

### Clearing User Data

#### Clearing the DRAM

All data in the DRAM is cleared by powering the instrument off.

#### Clearing the Flash ROM

The user data can be cleared from the Flash ROM by:

- 1** Reset the instrument to factory default.
  - a** Send the command:  
SYSTEM:PRESet  
  
OR
  - b** Press the LAN Reset button on the front panel briefly (<1 s).
- 2** Clear the instrument log.
  - a** Send the special command  
DIAG:SYST:FLAS:LOGF:ERAS  
  
The contents of the log can be checked with the query READ:LOGF?.
- 3** Clear the Ethernet settings
  - a** Connect to the instrument by some means other than the LAN, using VISA Assistant (for example over USB). Send the command:  
SYSTEM:COMMunicate:ETHernet:RESet  
  
OR
  - b** With the instrument connected over the LAN (the LAN LED is green), press and hold the LAN Reset button for more than 3s.

In either case, the instrument reboots.



## **5 Maintenance and Troubleshooting**

# Index

1 x 2 Switch, 45  
1 x 4 Switch, 46  
2 x 2 Switch, 46

## A

Accessories, 61  
Actuation Cycle, 49  
Adapters, 25  
Additional Cleaning Equipment, 67  
Keysight N77-Series optical  
Switches,  
Angled contact connector, 20

## B

Bare fiber adapters, 75  
BNC connectors, 21

## C

Cables, 25  
Cleaning connectors, 73  
Cleaning Instructions, 65  
Cleaning Procedures, 70  
Connect angled contact fiber end  
connectors, 20  
Connector, 26  
connectors, 72  
Crosstalk, 49

## D

DRAM, 78

## E

EEPROM, 78  
Electrical Connectors, 7, 21

## F

Flash ROM, 78  
Front Panel Indicators, 28  
Front Panels - Optical Switches, 18,  
19

## G

GPIB Interface, 7  
 GPIB interface, 25

## I

Infrared sensor cards, 71  
Initial Inspection, 7  
Input/Output Signals, 12  
Insertion loss (IL), 50  
Instrument Markings, 13  
IP address, 21  
Isopropyl alcohol, 68

## L

LAN Interface, 7  
Line Power Cable, 14  
Line Power Connectors, 12  
Line Power Requirements, 12

## M

Maximum Input power, 51  
Microscope, 70  
Multimode Switches, 20

## O

Operating Environment, 12  
Operating Temperature, 51  
Optical connectors, 20  
Optical Equipment, 66  
optical glass plate, 76  
Options, 61

## P

Pipe cleaners, 69  
Polarization dependent loss (PDL), 51  
Polymer film, 71  
Pre-moistened cleaning, 71

## R

Rear Panel, 18, 19  
Reference Connector, 51  
Repeatability, 51  
Return loss, 52

## S

Safety, 10  
Safety Considerations, 7, 10  
Safety Symbols, 10  
Standard Cleaning Equipment, 67  
Straight contact connectors, 20  
Switching Time, 52

## Index

### T

Technical Specifications - Optical Switches, 54  
Temperature for operation and storage, 16

### U

Ultrasonic baths, 70  
USB Interface, 7

### W

Wavelength range, 53





This information is subject to change without notice.  
© Keysight Technologies 2015  
Edition 2.0, January 2015



N7731-90B01

[www.keysight.com](http://www.keysight.com)