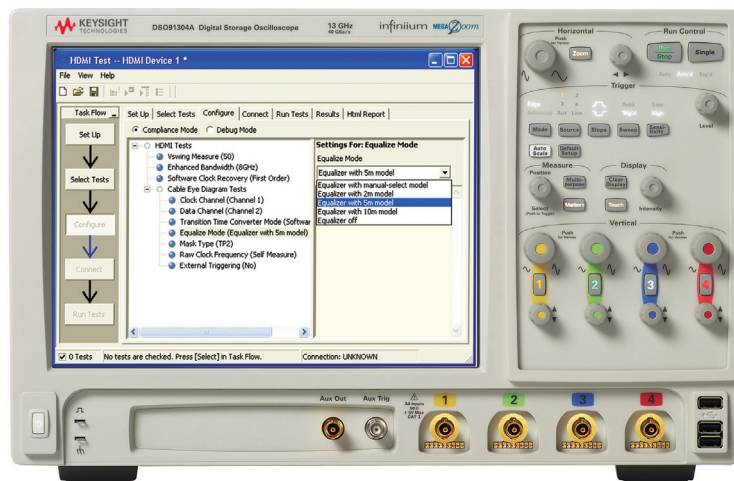


# Keysight Technologies

## N5399A HDMI Electrical Performance Validation and Compliance Software for Infiniium Oscilloscopes

Data Sheet



## Verify and Debug your HDMI Designs More Easily

Keysight Technologies, Inc. N5399A HDMI electrical performance validation and compliance software for Infiniium 80000 and 90000 Series oscilloscopes provides you with a fast and easy way to verify and debug your High Definition Multi-media Interface (HDMI) designs for set-top boxes, Digital Video Recorders, DVD players, entertainment systems, and motherboard systems. The HDMI electrical test software is designed for use in HDMI Authorized Test Centers (ATCs) so you can confidently use it to execute HDMI electrical checklist tests as well as employ it as a development tool. It displays the measurement data results in a flexible report format and the report also provides a margin analysis that shows how closely your device passed or failed each test.

To make measurements with the N5399A HDMI electrical test software, you may also need the N1080A HDMI TPA Fixtures for signal access.

The N5399A HDMI electrical test software performs a wide range of tests required to meet the HDMI 1.3 electrical specifications for various home theater components (DVD players, set top boxes, etc), entertainment, and motherboard systems as documented in section 4.2 of the base specification by the HDMI Standards Body<sup>1</sup>. To introduce an HDMI product to the market your product must successfully pass compliance testing based on the HDMI specification and it is expected that you have performed the tests included on the checklist before you submit your product for full compliance testing at one of the compliance test labs. The N5399A HDMI electrical test software helps you execute the most difficult physical layer tests on the transmitter (Tx) checklist that can be measured with an oscilloscope. As an HDMI adopter, you must submit your first HDMI product to the HDMI ATC for certification; the N5399A software is targeted to ensure that product has been debugged and well characterized prior to the certification and to become the sole HDMI test environment for all of your subsequent HDMI transmitter products.

## Features

The N5399A HDMI electrical test software offers several features to simplify the validation of HDMI designs:

- Test setup wizard for ease-of-use
- Wide range of electrical tests
- Measurement process configurability
- Automated scope measurement setup
- Test results report generation
- Pass/fail margin analysis

With the HDMI electrical test software, you can use the same oscilloscope you use for everyday debugging to perform automated testing and margin analysis based on the HDMI-specified test checklist.

1. High Definition Multi-media Interface Organization ([www.hdmi.org](http://www.hdmi.org))

## N5399A Saves You Time

The N5399A HDMI electrical test software saves you time by setting the stage for automatic execution of HDMI electrical tests. Part of the difficulty of performing electrical tests for HDMI is connecting the oscilloscope to the target device, configuring the instrument for measurement, executing the test procedure, and then analyzing the measured results by comparing them to limits published in the specification. The HDMI electrical test software does almost all of this work for you. Further, new filtering constructs (such as the reference equalizer) adopted in HDMI 1.3 which are extremely difficult to design, are implemented in the software. In addition, if you discover a problem with your device, debug tools are available to aid in root-cause analysis.

The N5399A HDMI electrical test software offers the eight required HDMI Transition Minimized Differential Signaling (TMDS) electrical tests as well as two important tests for cable and receiver tolerance testing. The software automatically configures the oscilloscope for each test, and it provides an informative results report that includes margin analysis indicating how close your product is to passing or failing that specification. Clock recovery of the TMDS clock is accomplished according to the standard by the oscilloscope using proprietary software techniques. See Table 2 for a complete list of the measurements made by the HDMI electrical test software.

## Easy Test Definition

The N5399A HDMI electrical test software extends the ease-of-use advantages of Keysight's Infiniium oscilloscopes to testing HDMI designs. The Keysight automated test engine walks you quickly through the steps required to define the tests, set up the test, perform the tests, and view the test results. The user is allowed to pick high level test parameters to suit test process objectives, and then can proceed to select a category of tests all at once, or specify individual tests. The user interface is oriented to minimize your reconnections necessary which saves time as well as minimizes potential for operator error. You can save tests and configurations as project files and recall them later for quick testing and review of previous test results. Straightforward menus let you perform tests with a minimum of mouse clicks.

## Test Environment Setup and Test Selection

The N5399A now allows the user to select test environment variables to better suit testing goals as well as improving documentation. Three selection areas are offered: Test Setup, Device Under Test, and Probe Offset Calibration. The Test Setup offers channel connection models of 2 or 4 channel connection. The 2 channel connection is the standard user connection model, however, the 4 channel model provides the capability to test all differential parameters on all 4 HDMI high-speed lanes with only one test connection. This selection also allows entry of the test fixture type used which is important for probe selection and for total compliance test configuration tracking. Also selectable is the HDMI specification version (1.2 or 1.3) and whether you want to hide informative tests. The current version for HDMI is 1.3, however you may wish to correlate results to 1.2 and find the option useful. Informative tests are provided for additional characterization capability (such as jitter separation measurement if you have the EZJIT Plus analysis package, N5400A).

The Device Under Test section allows selection of device type tested (transmitter, receiver or cable). Though the primary use of this compliance software is for the transmitter, there are use models requiring receiver eye measurement or calibration, cable eye evaluation and cable equalization where other options are useful.

The Device Identifier targets the type of DUT and will enable only those tests for the device type chosen. The Device Name and Comments allows you to name the device or to identify key configuration details. All of these are captured in the final report. The Probe Offset calibration procedure is provided to make precision measurements when measuring the eye at TP2 (at the receiver). The offset calibration can be zeroed manually and, if performed, will be used in all measurements for greater accuracy.

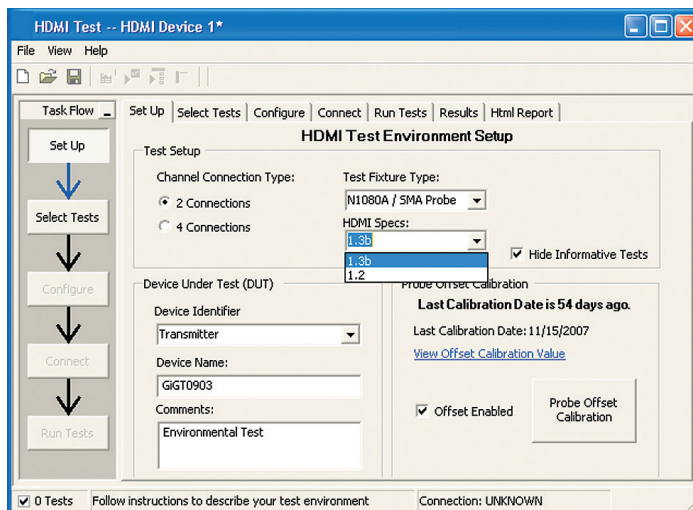


Figure 1. The New Test Setup Screen. Selection for 2 or 4 channel connection model, test fixture selection and device type.

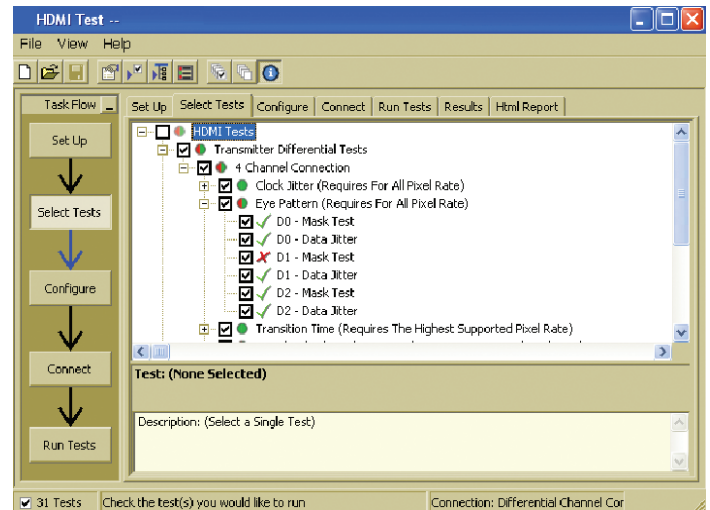
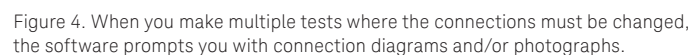
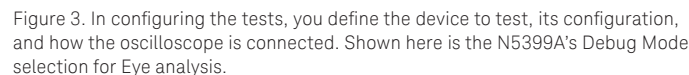


Figure 2. The Keysight automated test engine guides you quickly through selecting and configuring tests, setting up the connection, running the tests, and viewing the results. You can easily select individual tests or groups of tests with a mouse-click. Also easily seen is the test status for the device under test.

After configuring the test according to your needs, the N5399A User Interface will then present you the connection screen which is specific to the configuration data you have selected. Figure 4 illustrates the typical connection guidance provided for a two channel connection model.







**HDMI Test Report**

Overall Results: 0 of 10 Tests Failed

Test Configuration Details	
Device Description	
Device Name	TestPC003
Comments	Environmental Test
Device ID	Transceiver
HDMI Specification	1.3b
Test Fixture Type	NCODA / DMA Probe
ConnectionType	2 Connections
Test Results Details	
Infirum SW Version	05.40.0000
Infirum Model Number	0500123AA
Infirum Serial Number	In General
Application SW Version	2.50
Last Test Date	1/6/2009 9:05:10 AM

**Summary of Results**

Margin Threshold  
 Warning = +2 %  
 Fail = +0 %

Pass / Failed / Fails	Test Name	Actual Value	Margin	Spec Range
✓ 0 / 0	P-0 Check Rate	200Hz	90.0 %	VALUE = 200Hz
✓ 0 / 0	P-00 Mask Test	0.000	90.0 %	No Mask Failure
✓ 0 / 0	P-10 Data Rate	296	90.3 %	>=40.37Hz
✓ 0 / 0	P-0 Check Data Rate	95.000s	27.6 %	VALUE = 75.000s
✓ 0 / 0	P-0 Check Fall Time	90.040s	20.1 %	VALUE = 75.000s
✓ 0 / 0	P-0 Check Lane A Rise Time	88.460s	31.3 %	VALUE = 75.000s
✓ 0 / 0	P-0 Check Lane A Fall Time	91.820s	22.4 %	VALUE = 75.000s
✓ 0 / 0	P-0 Check Data Conversion Rate	44.80%	54.7 %	min=40%
✓ 0 / 0	P-0 Check Duty Cycle (Minimum)	50.130	16.5 %	>=40%
✓ 0 / 0	P-0 Run Pass Rate - Data Lane A Data Lane B	200Hz	82.5 %	Test = VALUE = 200Hz

**Report Detail**

(BETA VERSION 2.51.0010) HDMI Test -- HDMI Device 1 \*

File View Help

Task Flow

Set Up

Select Tests

Configure

Connect

Run Tests

Set Up Select Tests Configure Connect Run Tests Results Html Report

### Summary of Results

Margin Thresholds

Warning	< 2 %
Critical	< 0 %

Pass	# Failed	# Trials	Test Name	Actual Value	Margin	Spec Range
✓	0	1	7-9: Clock Jitter	90mTbit	64.0 %	VALUE <= 250mTbit
✓	0	1	7-10: Mask Test	0.000	50.0 %	No Mask Failures
✓	0	1	7-10: Data Jitter	127m	57.7 %	<=0.3Tbit
✓	0	1	7-4: Clock Rise Time	150.490ps	100.7 %	VALUE >= 75.000ps
✓	0	1	7-4: Clock Fall Time	150.010ps	100.0 %	VALUE >= 75.000ps
✓	0	1	7-4: Data Lane A Rise Time	143.160ps	90.9 %	VALUE >= 75.000ps
✓	0	1	7-4: Data Lane A Fall Time	140.380ps	87.2 %	VALUE >= 75.000ps
✓	0	1	7-8: Clock Duty Cycle(Minimum)	48.250	20.6 %	>=40%
✓	0	1	7-8: Clock Duty Cycle(Maximum)	48.710	18.8 %	<=60%

9 Tests View/Save/Print detailed HTML results. Connection: Differential Channel Cor

Set Up | Select Tests | Configure | Connect | Run Tests | Results | **Html Report**

Maskprocessor: 4 - JCC0306 11/13/06 21:00:07 3.030

### 7-10: Mask Test

Reference: Test ID 7-10

**Test Summary:** Pass | Test Description... | For all channels under all operating conditions specified in Table 4-11. The Source shall have output levels at TP1, which meet the normalized eye diagram requirements.

**Test Limits:** No Mask Failures | **Total # failures:** 0.000

#### Result Details

Maximum Margin	0.000000s	Maximum Margin (Vertical)	0.000000V	Data Lane A	D0
Test Frequency(MHz)	222.736	Mask Moved(ps)	0.000	# Acquisitions Point	16.00000M
Tbit(ps)	448.933	RightJitterData(Tbit)	127m	LeftJitterData(Tbit)	127m
RightJitterData(ps)	57.000	LeftJitterData(ps)	57.000	Differential Swing Voltage(V)	1.097
Mask Revision	RevB				

**Total # failures**

Trial 1: Total # failures

Figure 8. Summary Report Detail: the N5399A software's summary report yields all the screen shots of all the measurements that have been performed. In this figure you can see the Data-Eye. Observe the clear status and description at top and the measurement data just above the eye.

## Cable Equalization Feature

The N5399A software is implemented with the latest features required for HDMI 1.3b CTS compliance. Among the many new changes is the equalization of the cable for receiver eye analysis. This feature can be turned on and off for further insight into cable performance. The figure below illustrates the performance of a non-equalized HDMI cable versus equalization for a 5 meter cable. A use of this feature is to evaluate receiver design comparing actual or modeled results against the HDMI reference equalizer.

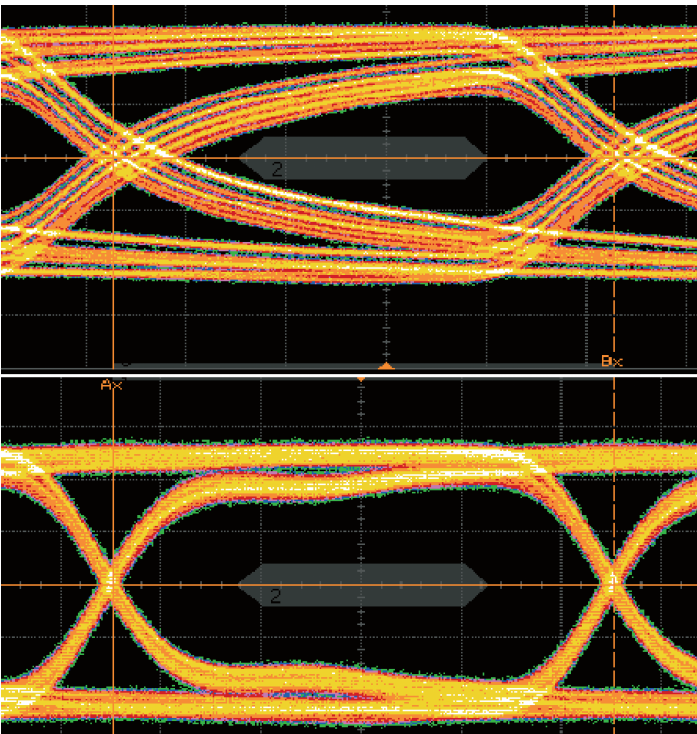


Figure 9. Cable Equalization Model for receiver eye or cable analysis.  
Top: no equalization. Bottom: 5 meter HDMI equalization model applied.

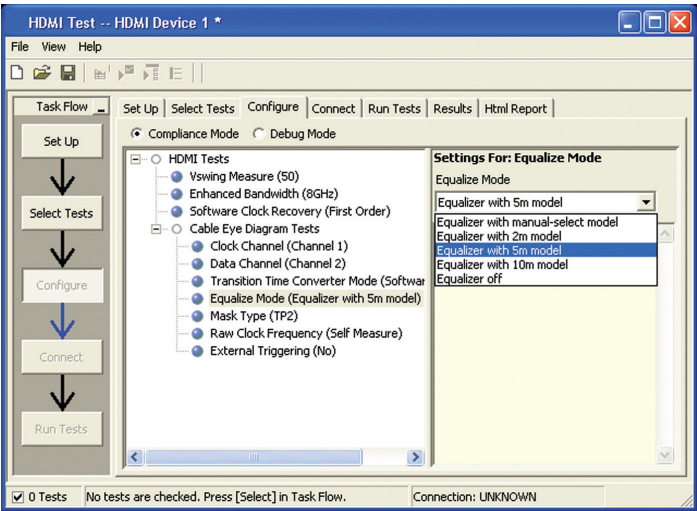


Figure 10. Selecting the cable length to be equalized in the configuration screen when performing cable and eye measurements.



## Measurement Requirements

To use the N5399A HDMI electrical performance validation and compliance software with the Keysight N1080A HDMI TPA Fixture, you will need at least two 7 GHz or higher InfiniMax differential probe amplifiers (1134A, 1168A, or 1169A) with appropriate SMA probe heads (N5380A). If not using the N1080A H01 test fixture, you will need to select the appropriate probe head to interface with your fixture. For instance, if the TMDS signals are accessible through a terminated 50 ohm transmission line for testing for example, silicon devices, you will need to use the E2678A socketed probe head, or the E2677 or N5381A solder-in differential probe head for high impedance probing.

Test time can be minimized by using four InfiniMax probes to measure all three differential data lanes (D0, D1, D2) and clock without having to reposition or reconnect probes. This is called the 'Four Probe Connection' and is selectable in the Setup screen.

## Oscilloscope compatibility

The N5399A HDMI electrical performance validation and compliance software is compatible with Keysight 54850, 80000 and 90000 Series oscilloscopes with operating software revision A.05.10 or higher (for 54850 or DSO80000 Series) or A.1.2.0 or higher (for DSO90000 Series). For oscilloscopes with earlier software revisions, free upgrade software is available at [http://www.keysight.com/find/infiniium\\_software](http://www.keysight.com/find/infiniium_software).

Table 1. Recommended oscilloscopes and bandwidth for HDMI 1.3 specification

### Keysight oscilloscopes for HDMI 1.3 compliance test\*

Data rate	Bandwidth	Suitable oscilloscopes	Recommended new purchase
Up to 740 Mb/s	4 GHz	54854A DSO80404A/B	DSO90404A
	6 GHz	54855A DSO80604A/B	DSO90604A
	8 GHz	DSO80804A/B	DSO90804A
Up to 3.4 Gb/s	8 GHz	DSO80404A/B	DSO90804A
	10 GHz	DSO81004A/B	
	12 GHz	DSO81204A/B	DSO91204A
	13 GHz	DSO81304A/B	DSO91304A

† The N5399A software will automatically control the bandwidth setting of the oscilloscope if the N5403A noise reduction software is enabled (for DSO80000A/B or Option 005 for DSO90000A Series).

\* The HDMI 1.3 CTS Specification supersedes the previous 1.2a HDMI version.

†† The DSO90000A Series of Oscilloscopes are upgradable in bandwidth from 2 to 13 GHz

## Tests Performed

The N5399A HDMI electrical performance validation and compliance software performs the following tests as per the HDMI Compliance Test Specifications 1.3 (CTS1.3) as documented in section 4.2 of the base specification.

Table 2. HDMI electrical tests performed by the N5399A software

Assertion No.	Description
Section 7.0	Transmitter tests
Test ID 7.2	TMDS $V_L$
Test ID 7.4	TMDS $T_{Rise}$ and $T_{Fall}$
Test ID 7.5*	TMDS Over/Undershoot
Test ID 7.6	TMDS Inter Pair Skew
Test ID 7.7	TMDS Intra Pair Skew
Test ID 7.8	TMDS Clock Duty Cycle
Test ID 7.9	TMDS Clock Jitter
Test ID 7.10	TMDS Data Eye Diagram
Sections 5.0 and 8.0	Cable and Receiver Tests
Test ID 5.3	Cable Eye Diagram Test
Test ID 8.5	Min/Max Differential Swing Tolerance
Test ID 8.7	TMDS Jitter Tolerance Calibrations

\*This test omitted in HDMI 1.3 Specification.

Note: The N5399A HDMI test software can make measurements for Digital Visual Interface (DVI) 1.0 devices. However, those devices are governed by the DVI specification which calls out different test methodologies and test fixturing. For DVI, Keysight offers the N5394A DVI electrical performance validation and compliance software.

## Ordering Information

To purchase the N5399A HDMI electrical performance validation and compliance software with a new or existing Infiniium 90000 Series oscilloscope, order from Table 3a.

For physical connection to an HDMI device to perform tests with the N5399A HDMI compliance test software, order from Table 3b.

Table 3a. HDMI Oscilloscope solution ordering information

Model number	Description	Quantity
DSO90804A	Oscilloscope (see Table 1)	1
1168A/1169A	10/12 GHz Probe Amplifiers (1169A recommended)	4
N5380A	12 GHz SMA probe heads for differential and single-ended measurements	5
N5399A	HDMI Test Compliance software for Infiniium 54850A, DSO80000 and DSO90000 Series oscilloscopes	1

Table 3b. HDMI Test Adapter solution ordering information

Model number	Description	Quantity
N1080A H01	HDMI Plug Test Adapter	1
N1080A H03	DDC/CEC Test Adapter board	1
N1080A H02	HDMI Receptacle Test Adapter For cable evaluation or receiver eye tests/analysis	1 (optional)

## Measurement and Test Accessories

To complete your test setup, Keysight provides a wide range of cables, adapters, terminations, etc.

Table 4. Recommended test accessories

Model number	Description
11667B	Power splitter, DC to 26.5 GHz, 3.5-mm (f) connectors
11636B	Power divider, DC to 26.5 GHz, 3.5-mm (f) connectors
8493B	Coaxial attenuator (3, 6, 10, 20 or 30 dB), DC to 18-GHz, SMA connector
1250-1158	SMA (f - f) adapter, DC to 18 GHz
1250-1159	SMA (m - m) adapter, DC to 18 GHz
1250-1397	Right-angle adapter, SMA (m - m)
1250-1741	Right-angle adapter, SMA (f - m)
1250-1698	SMA tee adapter (m, f, f), DC to 12.4 GHz
1250-1694	SMA (m) to SMA (f) adapter
15442A	Cable kit, four 90-cm (36-inch) SMA (m - m) cables
15443A	Matched cable pair, two 90-cm (36-inch) SMA (m - m) cables, propagation delay within 25 ps
1810-0118	SMA (m) 50 $\Omega$ termination
33SMA-Q50-0-4	SMA push-on adaptors from S.M. Electronics (or equivalent)
ZX85-12G-S+	Bias Tee from Mini-Circuits Corporation
BIT-GEN-SCK-0070	Snap on Connector Kit from Bitifeye corporation. <a href="http://www.bitifeye.com">www.bitifeye.com</a>
BIT-HDMI-PPD-7373	Probe Power Distribution Kit from Bitifeye corporation. <a href="http://www.bitifeye.com">www.bitifeye.com</a>

## Related Literature

Publication Title	Publication Type	Publication Number
<i>Keysight Infiniium DSO/DSA90000A Series</i>	Data Sheet	5989-7819EN
<i>Infiniium 80000 Series Oscilloscopes InfiniiMax Series Probes</i>	Data Sheet	5989-4604EN
<i>Keysight Technologies N5394A DVI Electrical Performance Validation and Compliance Software for Infiniium Oscilloscopes</i>	Data Sheet	5989-1526EN
<i>Keysight N1080A HDMI Test Point Access Adapters</i>	Data Sheet	5989-5118EN
<i>Keysight Technologies N5990A Automation Software Platform</i>	Data Sheet	5989-5483EN

For copies of this literature, contact your Keysight representative or visit [www.keysight.com/find/scope-apps](http://www.keysight.com/find/scope-apps)

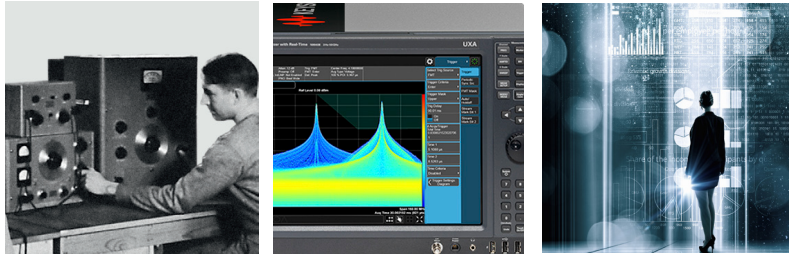
## Product Website

For the most up-to-date and complete application and product information, please visit our product Web site at: [www.keysight.com/find/scope-apps](http://www.keysight.com/find/scope-apps)

## Evolving Since 1939

Our unique combination of hardware, software, services, and people can help you reach your next breakthrough. We are unlocking the future of technology.

From Hewlett-Packard to Agilent to Keysight.



### myKeysight

#### myKeysight

[www.keysight.com/find/mykeysight](http://www.keysight.com/find/mykeysight)

A personalized view into the information most relevant to you.

[http://www.keysight.com/find/emt\\_product\\_registration](http://www.keysight.com/find/emt_product_registration)

Register your products to get up-to-date product information and find warranty information.

### KEYSIGHT SERVICES

Accelerate Technology Adoption.  
Lower costs.

#### Keysight Services

[www.keysight.com/find/service](http://www.keysight.com/find/service)

Keysight Services can help from acquisition to renewal across your instrument's lifecycle. Our comprehensive service offerings—one-stop calibration, repair, asset management, technology refresh, consulting, training and more—helps you improve product quality and lower costs.



#### Keysight Assurance Plans

[www.keysight.com/find/AssurancePlans](http://www.keysight.com/find/AssurancePlans)

Up to ten years of protection and no budgetary surprises to ensure your instruments are operating to specification, so you can rely on accurate measurements.

#### Keysight Channel Partners

[www.keysight.com/find/channelpartners](http://www.keysight.com/find/channelpartners)

Get the best of both worlds: Keysight's measurement expertise and product breadth, combined with channel partner convenience.

[www.keysight.com/find/hdmi](http://www.keysight.com/find/hdmi)

For more information on Keysight Technologies' products, applications or services, please contact your local Keysight office. The complete list is available at: [www.keysight.com/find/contactus](http://www.keysight.com/find/contactus)

### Americas

Canada	(877) 894 4414
Brazil	55 11 3351 7010
Mexico	001 800 254 2440
United States	(800) 829 4444

### Asia Pacific

Australia	1 800 629 485
China	800 810 0189
Hong Kong	800 938 693
India	1 800 11 2626
Japan	0120 (421) 345
Korea	080 769 0800
Malaysia	1 800 888 848
Singapore	1 800 375 8100
Taiwan	0800 047 866
Other AP Countries	(65) 6375 8100

### Europe & Middle East

Austria	0800 001122
Belgium	0800 58580
Finland	0800 523252
France	0805 980333
Germany	0800 6270999
Ireland	1800 832700
Israel	1 809 343051
Italy	800 599100
Luxembourg	+32 800 58580
Netherlands	0800 0233200
Russia	8800 5009286
Spain	800 000154
Sweden	0200 882255
Switzerland	0800 805353
	Opt. 1 (DE)
	Opt. 2 (FR)
	Opt. 3 (IT)
United Kingdom	0800 0260637

For other unlisted countries:

[www.keysight.com/find/contactus](http://www.keysight.com/find/contactus)  
(BP-9-7-17)

DEKRA Certified  
ISO 9001 Quality Management System

[www.keysight.com/go/quality](http://www.keysight.com/go/quality)  
Keysight Technologies, Inc.  
DEKRA Certified ISO 9001:2015  
Quality Management System



This information is subject to change without notice.  
© Keysight Technologies, 2017  
Published in USA, December 1, 2017  
5989-3047EN  
[www.keysight.com](http://www.keysight.com)