

PathWave BenchVue Software

Control. Automate. Simplify.

Simplified Measurement Viewing, Control and Capture

Keysight's PathWave BenchVue software for the PC eliminates many of the issues around bench testing. By making it simple to connect, control instruments, and automate test sequences you can quickly move past the test development phase and access results faster than ever before. Dedicated instrument apps allow you to quickly configure the most used measurements and setups for each instrument family. Test Flow enabled apps help you dramatically accelerate automated program development while further streamlining your workflow.



Use PathWave BenchVue Apps to:

- Configure the most commonly used controls and measurements from instruments
- Visualize multiple measurements simultaneously
- Easily log and export data and images in a few clicks for faster analysis
- Quickly create automated test sequences with minimal instrument knowledge
- Access deeper instrument controls and solutions

Save time by:

- Analyzing results within BenchVue or with built-in data exports
- Learning software quickly with common look and feel apps
- Utilizing multiple instrument apps in one easy to use software platform

Plug and Play Instrument Control

Connecting and controlling an instrument to BenchVue is as simple as plugging it in and launching the BenchVue instrument application. No programming or separate instrument drivers are required. BenchVue will automatically detect GPIB, and USB instrument connections.



BenchVue Apps

Keysight’s BenchVue software platform provides access to a wide array of instrument control, automation and analysis apps with different capabilities to enhance your productivity. These capabilities vary based on the functionality of the types of instruments, apps, and models that are connected to your PC running BenchVue software.

All instrument control apps such as BenchVue Fieldfox Handheld Analyzer apps allow you to easily control and build custom automated sequences using BenchVue Test Flow.

Technology-specific apps such as Solar Array Simulation software are dedicated apps for a specialized type of application or industry.

Lab management apps provide centralized lab instrument configuration, ability to track assets, and more lab administration features.



Important note: Keysight’s BenchVue software apps are designed to deliver the best user experience and functionality to enhance your productivity. The new Pathwave BenchVue Digital Multimeter, BenchVue Function Generator, BenchVue Power Supply and BenchVue Oscilloscope apps operate as standalone applications and support new and some existing¹ instrument models.



BenchVue Digital Multimeter



BenchVue Function Generator



BenchVue Power Supply



BenchVue Oscilloscope

¹ For the most current supported instrument list, visit: www.keysight.com/find/BenchVueInstruments.

BenchVue apps and collections

- Complete Control Collection (BV9001B)
- Digital Multimeter (BV0001B)
- Function Generator (BV0002B)
- Power Supply (BV0003B)
- Oscilloscope (BV0004B)
- Data Acquisition (BV0006B)
- Power Meter (BV0007B)
- FieldFox Analyzer (BV0010B)
- Universal Counter (BV0011B)
- Electronic Load (BV0012B)
- Current Analyzer (BV0013B)
- LCR Meter (BV0014B)
- USB Modular Digital Multimeter App (BV0021B)
- USB Modular Function Generator App (BV0022B)
- USB Modular SMU App (BV0023B)
- USB Modular Oscilloscope App (BV0024B)
- USB Modular DAQ App (BV0025B)
- USB Modular Data Acquisition (BV0025B)
- AC Source Control Software (BV0026B) **NEW**
- AC Source Avionics Standard Test Software (BV0028B) **NEW**
- AC Source Pre-Compliance Test Software (BV0030B) **NEW**
- Spectrum Analyzer (available in BV9001B)
- Network Analyzer (available in BV9001B)
- Signal Generator (available in BV9001B)
- Solar Array Simulation (DG8901A)
- IV Curve Measurement Software (PW9251A) **NEW**
- Advanced Power Control & Analysis Software (PW9252A) **NEW**
- Advanced Battery Test & Emulation (PW9253A) **NEW**
- Advanced Power Application Suite (PW9254A) **NEW**
- USB Modular Chassis (*Free*)
- USB Modular Switch Matrix (*Free*)
- Power Analyzer (*Free*)
- Serial Control – Beta (*Free*)

For the latest applications with free 30-day trials, check out the BenchVue Apps tab within BenchVue or visit: www.keysight.com/find/benchvue_apps

Note: The BenchVue included license that comes with an instrument purchase has been discontinued. It has been replaced with the totally free BenchVue Basic App, making it easier for you to access and use BenchVue software without any license registration. Each PathWave BenchVue Basic app provides unlimited access and features available in the version just before the latest version of BenchVue software.

Visit: www.keysight.com/find/BVBasic for more information

BenchVue Complete Control Collection

Access a complete collection of all BenchVue instrument control, automation and analysis apps. Including exclusive access to the Network Analyzer, Spectrum Analyzer and Signal Generator apps.

Model: BV9001B



- Digital Multimeter app
- Function Generator app
- Power Supply app
- Oscilloscopes app
- Data Acquisition app
- Power Meters/Sensors app
- FieldFox App
- Universal Counter app
- Electronic Load app
- Current Analyzer app
- LCR Meter app
- USB Digital Multimeter app
- USB Function Generator app
- USB Modular SMU app
- USB Modular Oscilloscopes app
- USB Modular Data Acquisition app
- Spectrum Analyzer app
- Signal Generator app
- Network Analyzer app

BenchVue Digital Multimeter Control App



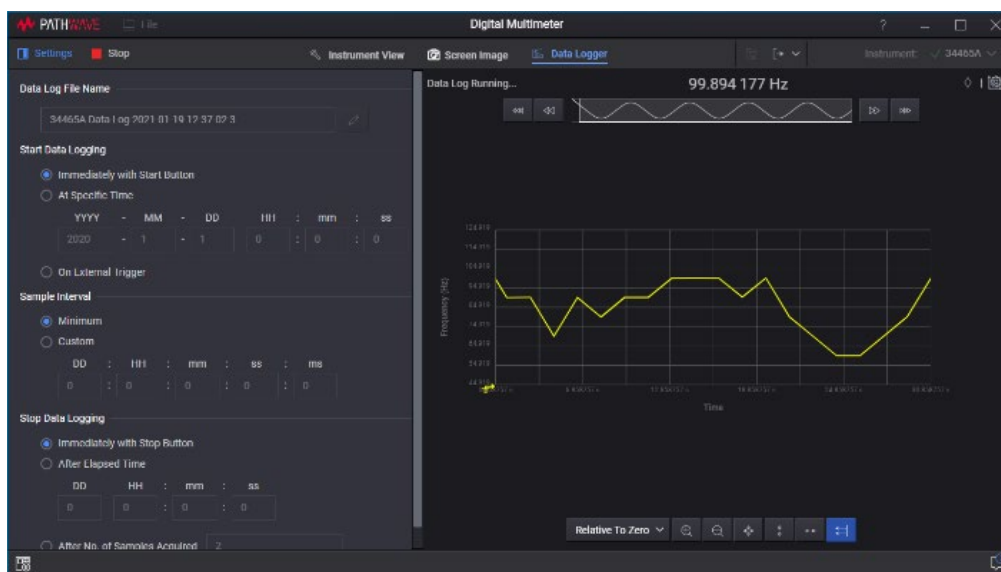
Model: BV0001B

Easily control your DMM and acquire log measurements for quick analysis.

- All new standalone application
- High resolution with newly designed user-friendly Interface

Supports the following models:

- 34401A, 34405A, 34410A, 34411A, 34420A, 34450A, 34460A, 34461A, 34465A, 34470A,
- EDU34450A



BenchVue Function Generator Control App



Model: BV0002B

Intuitively control your function generators and build automated tests quickly.

- All new standalone application
- High resolution with newly designed user-friendly Interface

Supports the following models:

- 33611A, 33612A, 33621A, 33622A
- 33210A, 33220A, 81150A, 81160A
- 33509B, 33510B, 33511B, 33512B, 33519B, 33520B, 33521B, 33522B
- EDU33211A, EDU33212A



BenchVue Power Supply Control App



Model: BV0003B

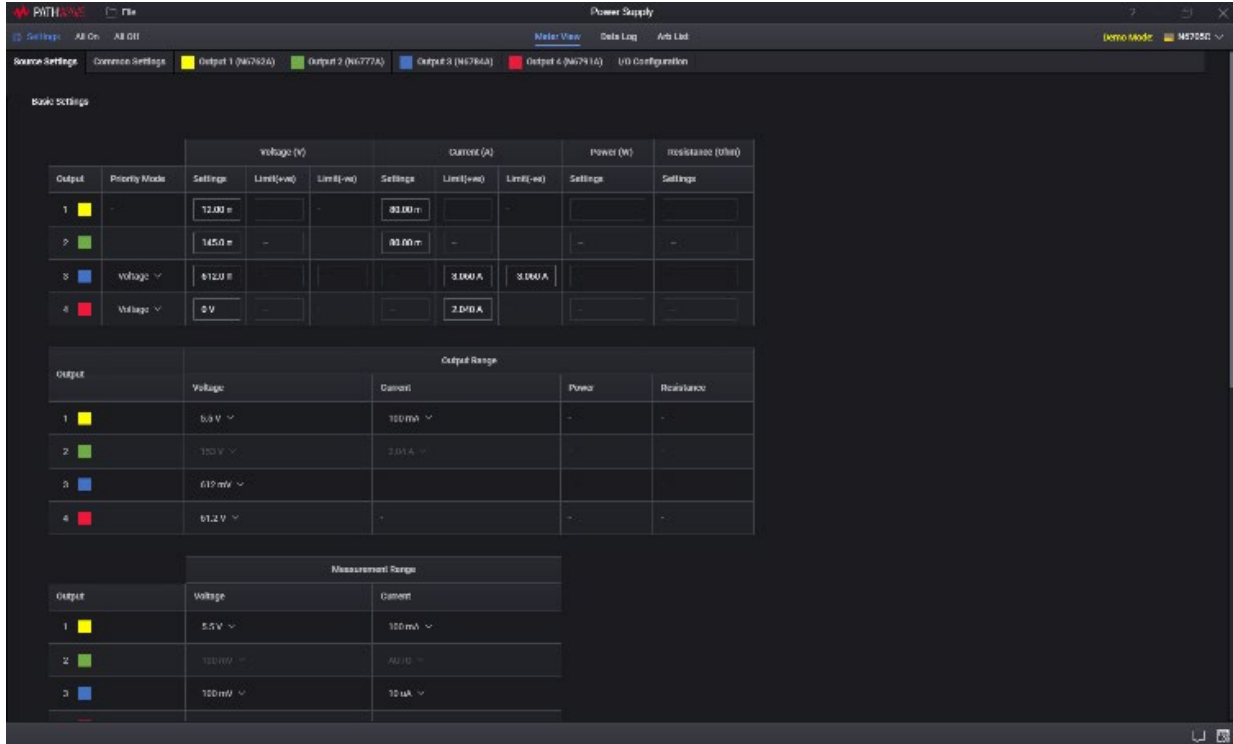
Easily control your power supplies to set parameters.

- All new standalone application
- High resolution with newly designed user-friendly Interface

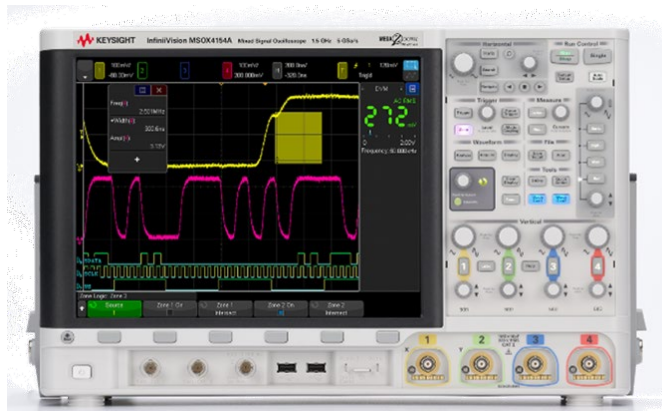
Supports the following models:

- B29xxA Series (4)
- B2961A/62A
- E3600 Series (14)
- E36100 Series (10)
- E36200 Series (4)
- E36300 Series (3)
- N5700 Series (24)
- N6700A/B/C, N6701A/C, N6702A/C, N6705A/B/C
- N6785A, N6786A
- N6900 Series (12)
- N7900 Series (12)
- N8700 Series (21)
- N8900 Series (36)
- RP7900 Series (6)
- B29xxB (7)
- B2901BL, B2910BL
- N67xxA (21)
- N67xxB (12)
- RP7972A, RP7973A
- RP7982A, RP7983A, RP7984A
- E36154A, E36155A
- EDU36311A, PZ2100A
- RP59xxA,

- DP5700 series



BenchVue Oscilloscope Control App



Model: BV0004B

Conveniently control your oscilloscopes and quickly acquire log data for analysis.

- All new standalone application
- High resolution with newly designed user-friendly Interface

Supports the following models:

- 1000-X Series (10)
- 2000-X Series (12)
- 3000-X Series (18)
- 3000T Series (19)
- 4000-X Series (16)
- 6000 Series (8)
- 7000 Series (14)
- 9000 Series (8)
- 90000 Series (6)
- 90000 X-Series (17)
- 90000 DSA Series (16)
- P924xA Series (3)
- S Series (14)
- V Series (18)
- Z Series (10)
- MSO-X 3012G, MSO-X 3014G, MSO-X 3022G, MSO-X 3024G, MSO-X 3032G, MSO-X 3034G, MSO-X 3052G, MSO-X 3054G, MSO-X 3102G, MSO-X 3104G
- MSOX4052G, MSOX4054G, EXR404A, EXR408A, EXR604A, EXR608A
- DSO-X 3012G, DSO-X 3014G, DSO-X 3022G, DSO-X 3024G, DSO-X 3032G, DSO-X 3034G, DSO-X 3052G, DSO-X 3054G, DSO-X 3102G, DSO-X 3104G

- DSOX4022G, DSOX4024G, DSOX4032G, DSOX4034G, DSOX4052G, DSOX4054G, MSOX4022G, MSOX4024G, MSOX4032G, MSOX4034G
- EXR104A, EXR204A, EXR254A, EXR058A, EXR108A, EXR208A, EXR258A
- EXR054B, EXR104B, EXR204B, EXR254B, EXR058B, EXR108B, EXR208B, EXR258B, EXR404B, EXR408B, EXR604B, EXR608B
- MXR054A, MXR104A, MXR204A, MXR254A, MXR404A, MXR604A, MXR058A, MXR108A, MXR208A, MXR258A, MXR408A, MXR608A
- MXR054B, MXR104B, MXR204B, MXR254B, MXR404B, MXR604B, MXR058B, MXR108B, MXR208B, MXR258B, MXR408B, MXR608B
- HD304MSO, HD302MSO



BenchVue Data Acquisition Control & Analysis App

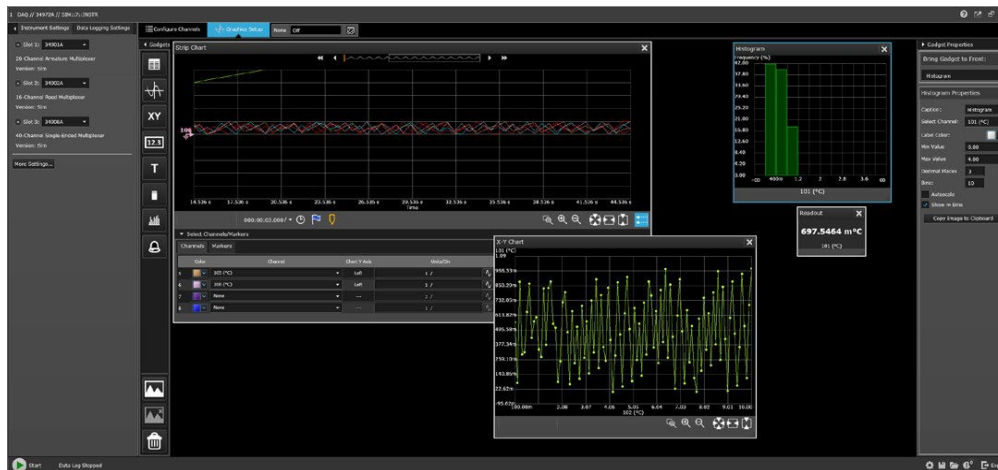


Model: BV0006B

Conveniently control your data acquisition units, easily visualize measurements and log data.

Supports the following models:

- 34970A
- 34972A
- 34980A
- DAQ970A
- DAQ973A



BenchVue Power Meter/Power Sensor Control & Analysis App



Model: BV0007B

Conveniently control your power meters and power sensors, analyze RF power measurements, and quickly log data.

Supports the following models:

- U2021XA, U2022XA
- U204x XA (5)
- U205x XA (7)
- U206x XA (7)
- U2000 Series (9)
- U2053/63 Series
- L2050/60 Series (17)
- U848x Series (5)
- N191xA (4)
- N8262A
- N1913B, N1914B



BenchVue FieldFox Handheld Analyzer Control & Automation App

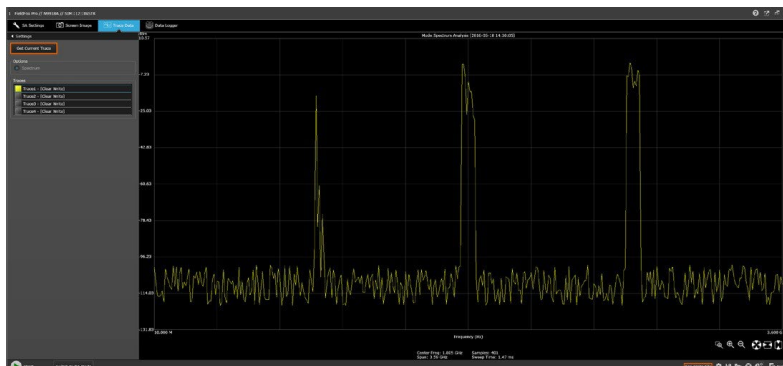


Model: BV0010B

Use your FieldFox in spectrum analyzer or network analyzer modes to quickly control parameters, capture measurements over time and build automated tests.

Supports the following models:

- N9912A-N9918A (7)
- N9923A-N9928A (5)
- N9935A-N9938A (4)
- N9950A-N9952A (3)
- N9960A-N9962A (3)
- N9913B-N9918B (6)
- N9933B-N9938B (6)
- N9950B-N9953B (4)
- N9960B-N9963B (4)



Universal Counter Control & Automation App

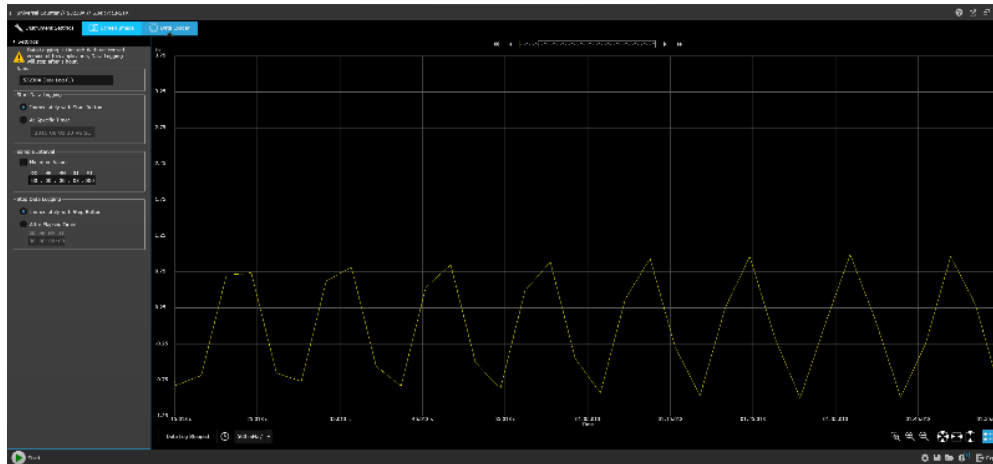


Model: BV0011B

Easily control your counters to quickly build automated tests and log data for faster analysis.

Supports the following models:

- 53210A
- 53220A
- 53230A



BenchVue Electronic Load Control & Automation App

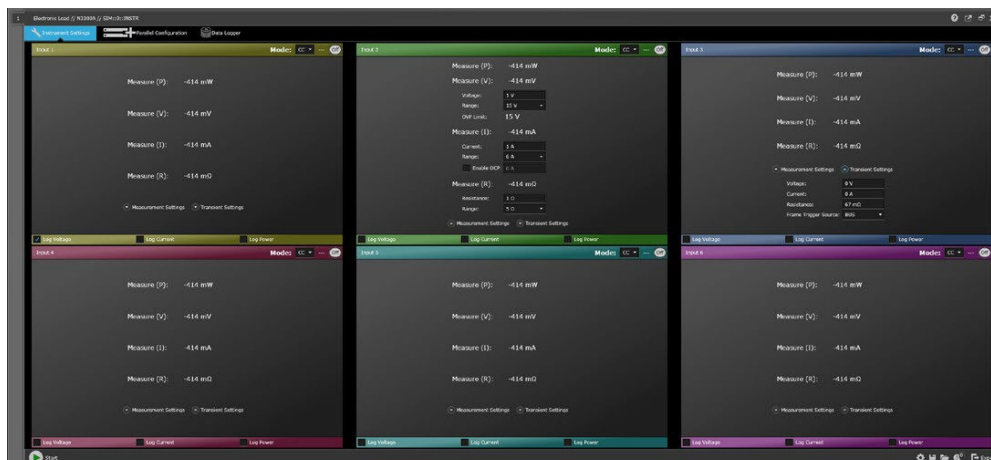


Model: BV0012B

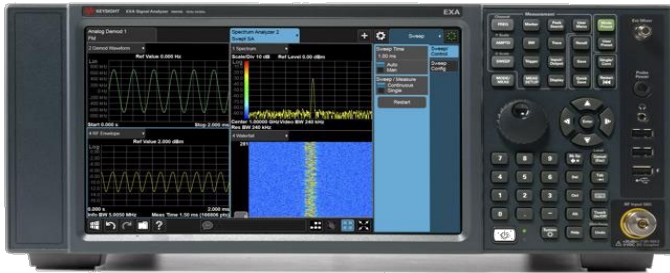
Easily control your electronic loads, build automated tests, and visualize measurements over time.

Supports the following models:

- N3300A, N3301A
- 6060B, 6063B
- EL33133A, EL34143A, EL34243A
- EL4915A, EL4925A, EL4935A, EL4945A, EL4916A, EL4926A, EL4936A, EL4946A, EL4913A, EL4923A, EL4933A, EL4943A



BenchVue Spectrum Analyzer Control & Automation App



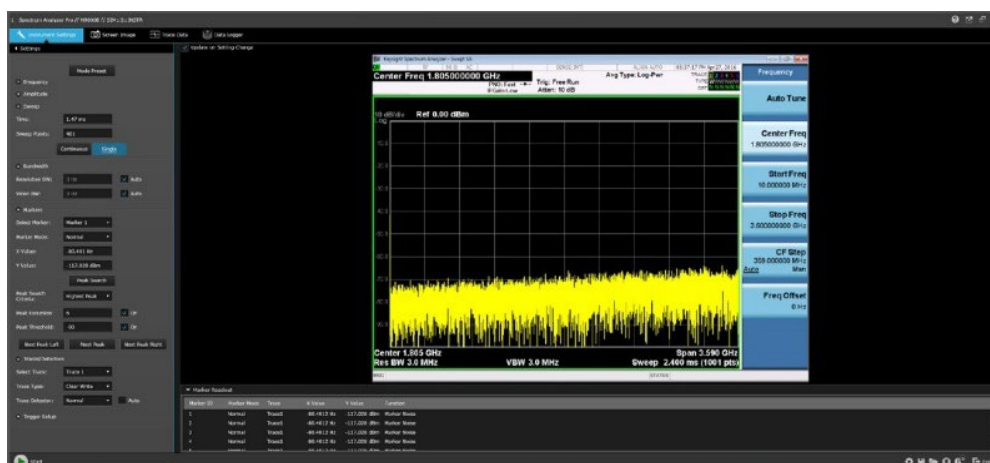
Model: BV9001B

(Exclusively available in the BenchVue Complete Control Collection)

Intuitively control your spectrum or signal analyzers, build automated tests, and log trace data.

Supports the following models:

- X-Series: N9040B UXA, N9030A/B PXA, N9020A/B MXA, N9010A/B EXA, N9000A/B CXA, M9290A CXA-m
- HSA: N9342C, N9343C, N9344C
- ESA: E4402B, E4403B, E4404B, E4405B, E4407B, E4408B, E4411B
- PSA: E4440A, E4443A, E4445A, E4446A, E4447A, E4448A
- BSA: N9320B, N9321C, N9322C, N9323C, N9324C
- Fieldfox: N9913B, N9914B, N9915B, N9916B, N9917B, N9918B, N9933B, N9934B, N9935B, N9936B, N9937B, N9938B, N9950B, N9951B, N9952B, N9953B, N9960B, N9961B, N9962B, N9963B



BenchVue Network Analyzer Control & Automation App



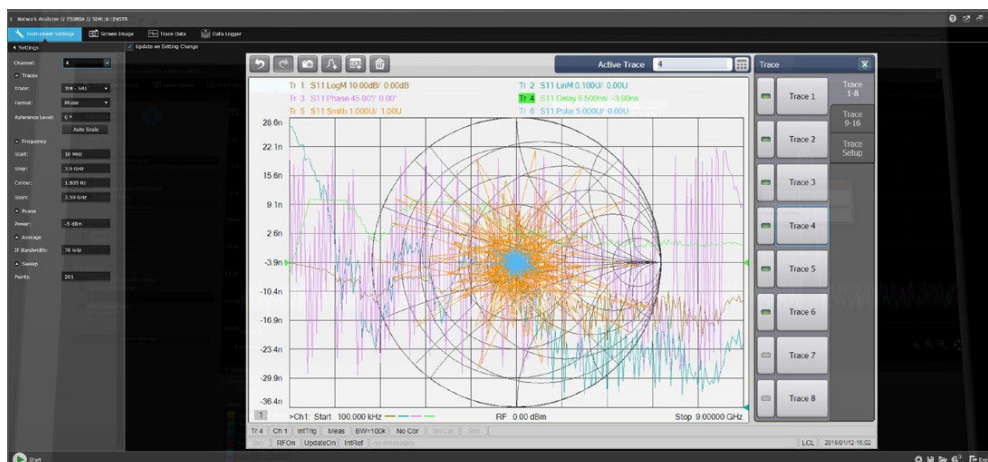
Model: BV9001B

(Exclusively available in the BenchVue Complete Control Collection)

Intuitively control your network analyzers, quickly build automated tests and acquire trace data.

Supports the following models:

- ENA: E50xxA/B/C (5)
- PNA: N522xA/B (10)
- PNA-L: N523xA/B/C (11)
- PNA-X: N524xA/B (12)
- PXI VNAs: M937xA (6)
- PXIe multiport VNA: M9485A
- Fieldfox: N9917B, N9913B, N9914B, N9915B, N9916B, N9918B, N9933B, N9934B, N9935B, N9936B, N9937B, N9938B, N9950B, N9951B, N9952B, N9953B, N9960B, N9961B, N9962B, N9963B



BenchVue Signal Generator Control & Automation App

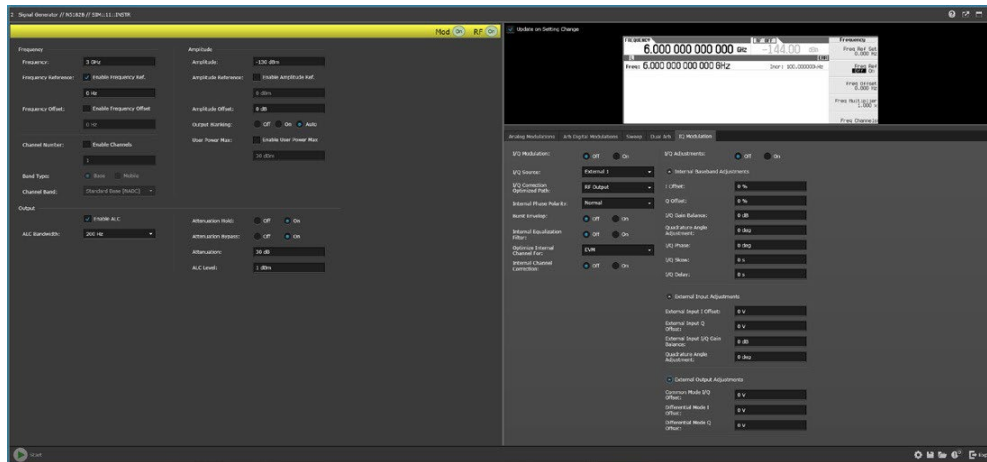


Model: BV9001B

(Exclusively available in the BenchVue Complete Control Collection)

Supports the following models:

- E4428C, E4438C
- E8257D, E8267D, E8663D
- EXG X-Series: N5171B, N5172B, N5173B
- MXG X-Series : N5181A/B, N5182A/B, N5183A/B



BenchVue Power Analyzer Control & Automation App

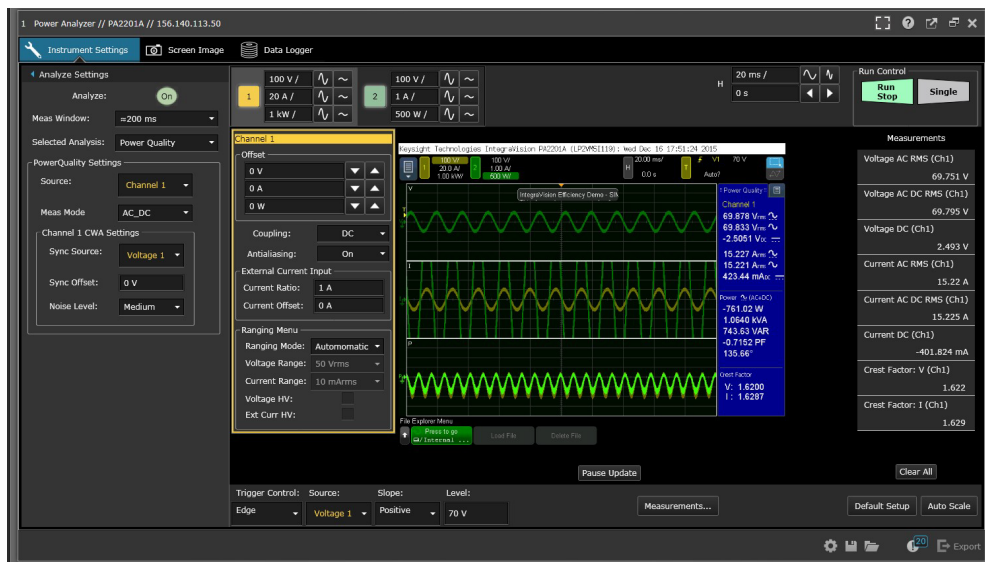


Available to download for free

Conveniently control your power analyzers, quickly visualize measurements, and easily log data.

Supports the following models:

- PA2201A
- PA2203A



Solar Array Simulator Control

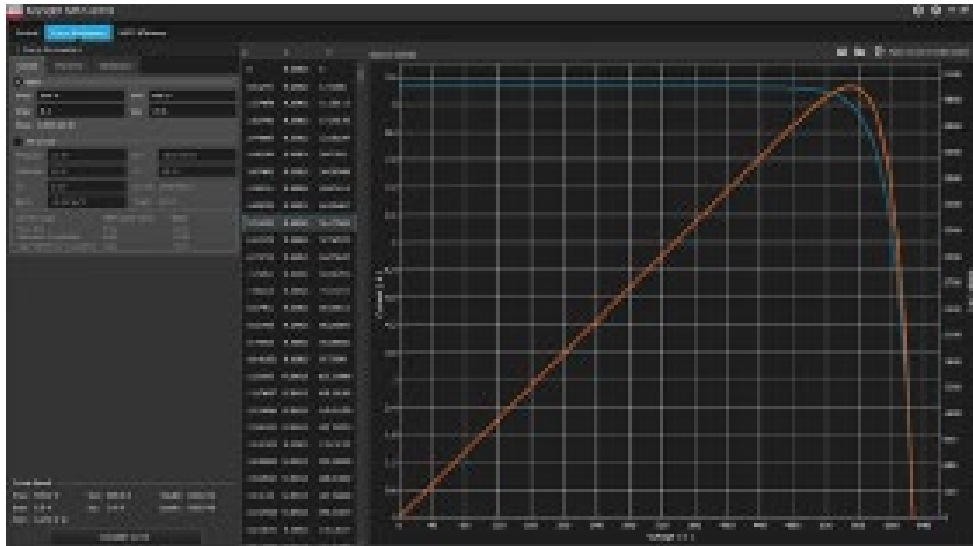


Model: DG8901A

Easily create, manipulate, view, and execute photovoltaic I-V curves for testing PV inverters.

Supports the following models:

- N8937APV, N8957APV, PV8921A, PV8922A, PV8931A, PV8932A, RP7972A, RP7973A, RP7982A, RP7983A



BenchVue Current Analyzer Control and Analysis App

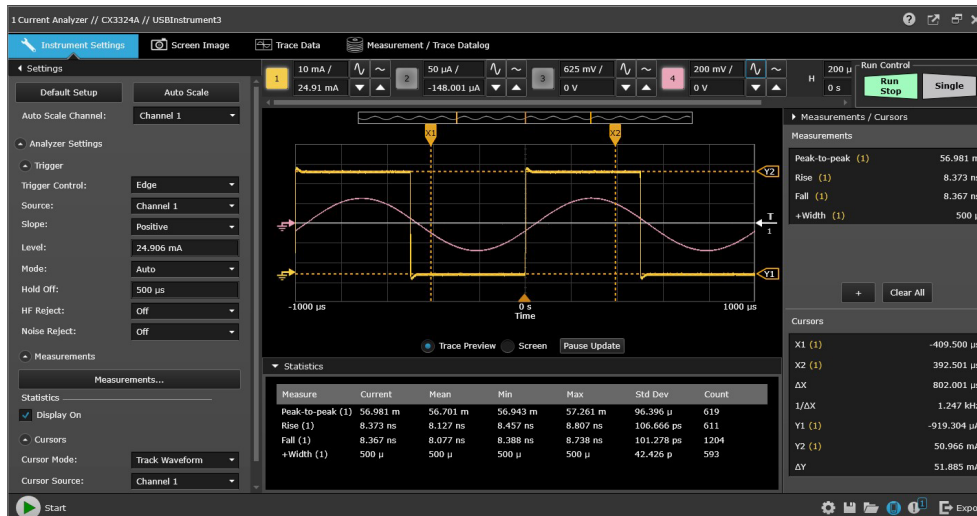


Model: BV0013B

Conveniently connect and control your current analyzers to quickly view measurements, build automated tests, and log data for analysis.

Supports the following models:

- CX3322A
- CX3324A



BenchVue LCR Meter Control and Automation App

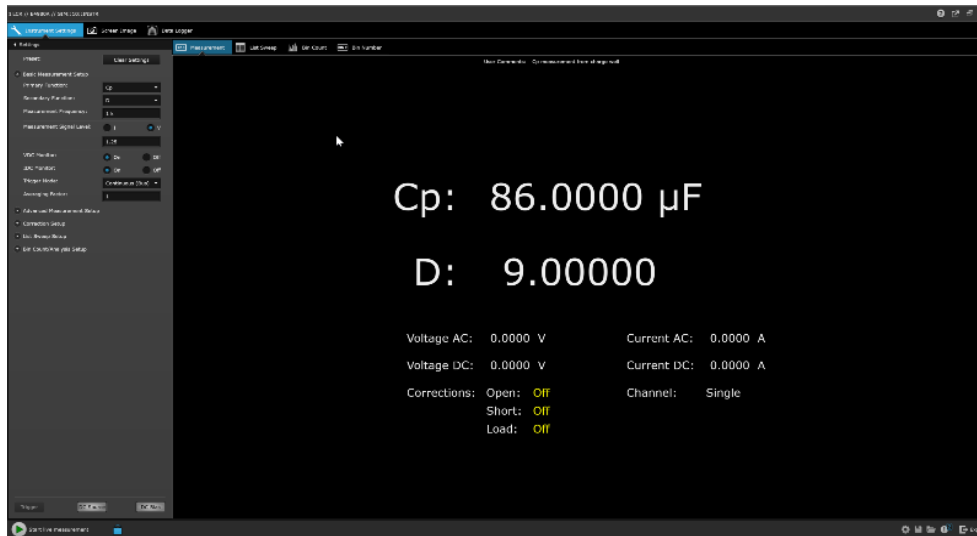


Model: BV0014B

Connect and control your LCR meters to quickly view measurements, configure sweeps, build automated tests, and log data for analysis.

Supports the following models:

- E4980A
- E4980AL



USB Modular Digital Multimeter Control Pro App

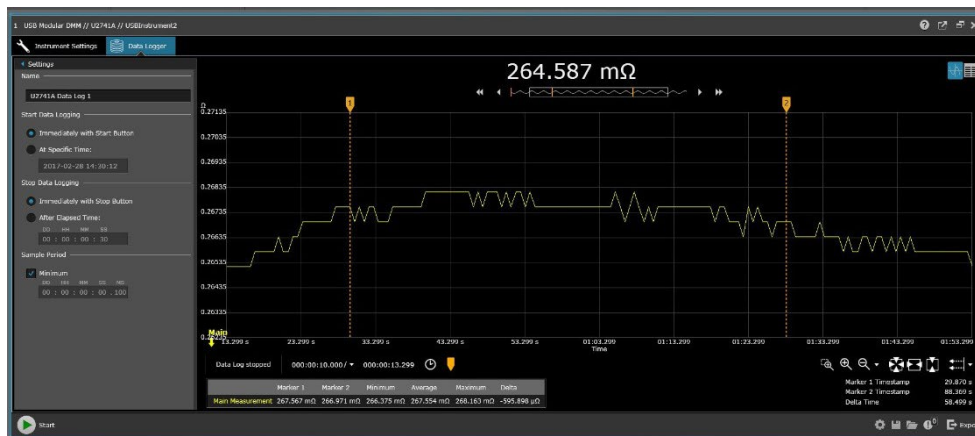


Model: BV0021B

Connect and control your USB Modular DMM to view measurements and plot or log data.

Supports the following model:

- U2741A



USB Modular Function Generator Control Pro App

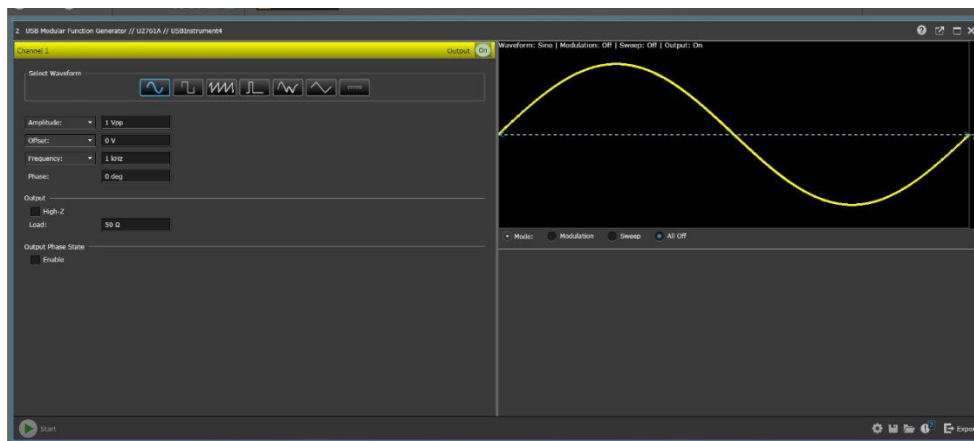


Model: BV0022B

Connect and configure your USB Modular function generator to create waveforms.

Supports the following model:

- U2761A



USB Modular Source Measure Unit (SMU) Control Pro App

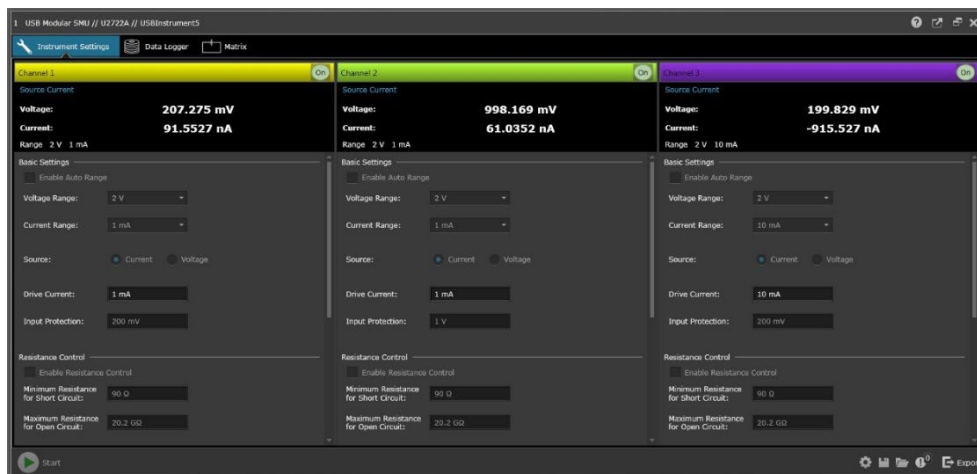


Model: BV0023B

Configure voltage and current source, range, and limits for USB Modular SMU channels and log data.

Supports the following models:

- U2722A
- U2723A



USB Modular Oscilloscope Control Pro App

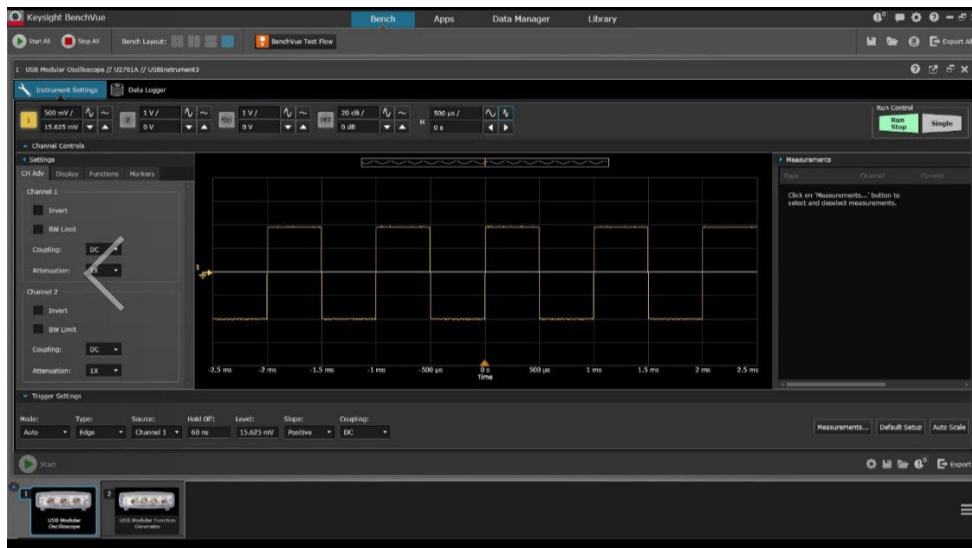


Model: BV0024B

Configure and control your USB Modular oscilloscope to capture screen images, record trace data and log measurements.

Supports the following models:

- U2701A
- U2702A



USB Modular Data Acquisition Control Pro App

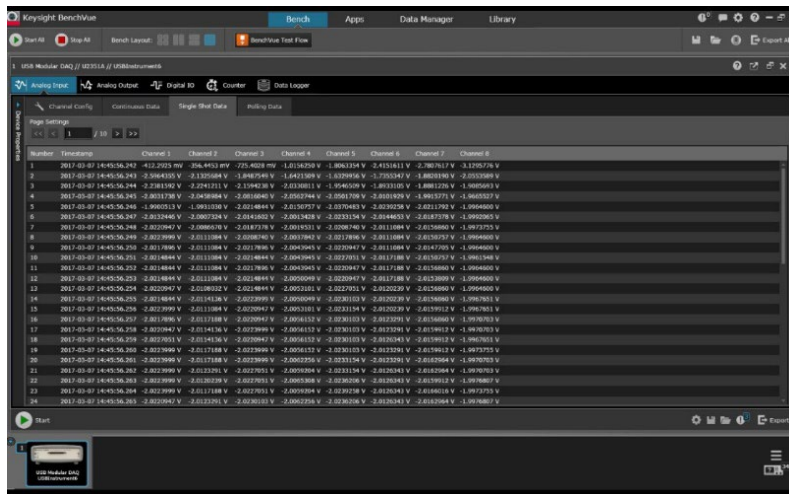


Model: BV0025B

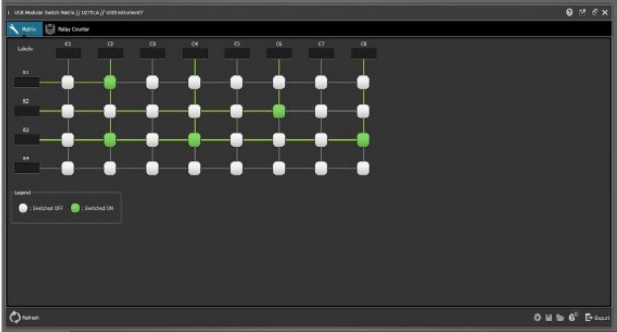
Connect and configure your USB Modular DAQ channels to make measurements and log data.

Supports the following models:

- U2351/2/3/4/5/6A
- U2331A
- U2531A
- U2541A, U2542A
- U2651/2/3A



USB Modular Switch Matrix App



Easily open and close relays channels on your USB Modular switch matrix.

Serial Control & Automation App



Available to download for free

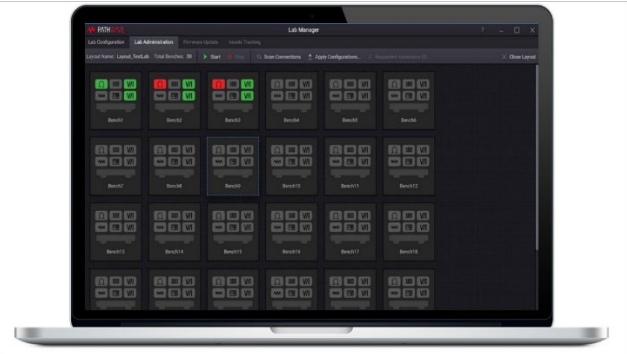
Intuitively send receive commands from your serial devices to your PC. Control and automate serial devices within BenchVue along with your instruments.

PathWave BenchVue Lab Management and Control Solution



Model: PW9111EDU

PathWave BenchVue Lab Management and Control Solution is a network-based application that enables interconnection of all instruments via LAN or WLAN. It provides centralized control for educators to seamlessly connect and monitor all instruments within the teaching lab.



PathWave BenchVue AC Source Control Software



Model: BV0026B

The PathWave BenchVue AC source control software controls and analyses your AC source measurements to understand the impact of events related to power draw.

Supports the following models:

- AC6903L, AC6903H, AC6906L, AC6912L, AC6918L, AC6906H, AC6912H, AC6918H

PathWave BenchVue AC Source Avionics Standard Test Software



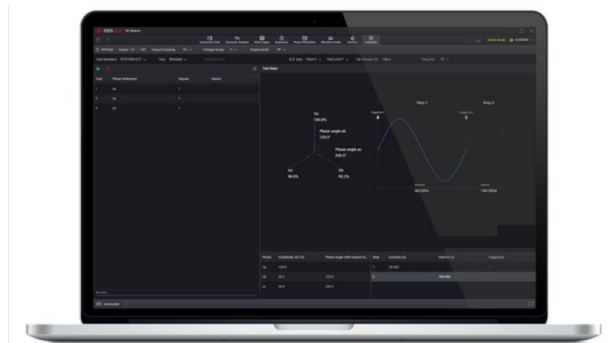
Model: BV0028B

Control your AC source and accelerate pre-compliance testing as per the avionics and military-standard requirements at ease.

Supports the following models:

- AC6903L, AC6903H, AC6906L, AC6912L, AC6918L, AC6906H, AC6912H, AC6918H

PathWave BenchVue AC Source Pre-Compliance Test Software



Model: BV0030B

Control your AC source and accelerate pre-compliance testing as per the avionics and military-standard requirements at ease.

Supports the following models:

- AC6903L, AC6903H, AC6906L, AC6912L, AC6918L, AC6906H, AC6912H, AC6918H

PathWave IV Curve Measurement Software



Model: PW9251A

Accelerate your research, development and design verification by quick and easy execution of synchronous current-voltage (IV) measurements without programming, immediately reviewing test results on graphs and tables, and generate report efficiently.

Supports the following models:

- B2901A, B2902A, B2911A, B2912A, B2961A, B2962A
- B2901B, B2902B, B2911B, B2912B, B2961B, B2962B, B2901BL, B2910BL
- PZ2100A, PZ2120A, PZ2121A, PZ2130A, PZ2131A, PZ2110A

PathWave Advanced Power Control & Analysis Software



Model: PW9252A

Connect easily and access your Power Supply's advanced sourcing and measurement features.

Supports the following models:

N6705A, N6705B, N6705C, N6731B, N6732B, N6733B, N6734B, N6735B, N6736B, N6741B, N6742B, N6743B, N6744B, N6745B, N6746B,
N6751A, N6752A, N6753A, N6754A, N6755A, N6756A, N6761A,
N6762A, N6763A, N6764A, N6765A, N6766A, N6773A, N6774A,
N6775A, N6776A, N6777A, N6781A, N6782A, N6783A-BAT, N6783A-MFG,
N6784A, N6785A, N6786A, N6791A, N6792A, N7950A, N7951A, N7952A,
N7953A, N7954A, N7970A, N7971A, N7972A, N7973A, N7974A, N7975A,
N7976A, N7977A, N69143A, N69145A, N69146A, N69172A, N69173A,
RP7951A, RP7951AT, RP7952A, RP7952AT, RP7953A, RP7961A, RP7962A,
RP7963A, RP7931A, RP7932A, RP7933A, RP7935A, RP7936A, RP7941A,
RP7942A, RP7943A, RP7945A, RP7946A, RP7971A, RP7972A, RP7973A, RP7981A, RP7982A,
RP7983A, RP7984A, E36154A, E36155A
EL4915A, EL4925A, EL4935A, EL4945A, EL4916A, EL4926A, EL4936A, EL4946A, EL4913A, EL4923A,
EL4933A, EL4943A, RP5915A, RP5925A, RP5935A, RP5945A, RP5916A, RP5926A, RP5936A,
RP5946A, RP5913A, RP5923A, RP5933A, RP5943A

PathWave Advanced Battery Test and Emulation Software



Model: PW9253A

Connect easily and access your Power Supply's advanced sourcing and measurement features.

Supports the following models:

N6705A, N6705B, N6705C

N6700C, N6701C, N6702C

N6781A, N6782A, N6784A, N6785A, N6786A

N7950A, N7951A, N7952A, N7953A, N7954A, N7970A, N7971A, N7972A,

N7973A, N7974A, N7976A, N7977A, N7953ALG,

RP7951A, RP7952A, RP7953A, RP7961A, RP7962A, RP7963A, RP7951AT,

RP7952AT, RP7953AT, RP7961AT, RP7962AT, RP7963AT, RP7931A, RP7932A,

RP7933A, RP7935A, RP7936A, RP7941A, RP7942A, RP7943A, RP7945A,

RP7946A, RP7971A, RP7972A, RP7973A, RP7981A, RP7982A, RP7983A, RP7984A

34970A, 34972A, DAQ970A, DAQ973A

E36731A

RP5915A, RP5925A, RP5935A, RP5945A, RP5916A, RP5926A, RP5936A, RP5946A, RP5913A,

RP5923A, RP5933A, RP5943A

PathWave Advanced Power Application Suite Bundle Software



Model: PW9254A

The PW9254A bundle software includes licensing for three applications:

- PathWave IV curve measurements — PW9251A
- PathWave Advanced Power Control and Analysis — PW9252A
- PathWave Advanced Battery Test and Emulation — PW9253A

BenchVue Software Supported Instruments

Each of the BenchVue apps support certain Keysight instrument models. These apps are updated regularly with additional models. For the most current supported instrument list,

visit: www.keysight.com/find/BenchVueInstruments

BenchVue Demonstration Mode

BenchVue includes a demonstration mode that does not require instruments to be connected, making product evaluation quick and easy. Simply download and click “enable demo mode” under the global setting menu to begin exploring BenchVue functionality.

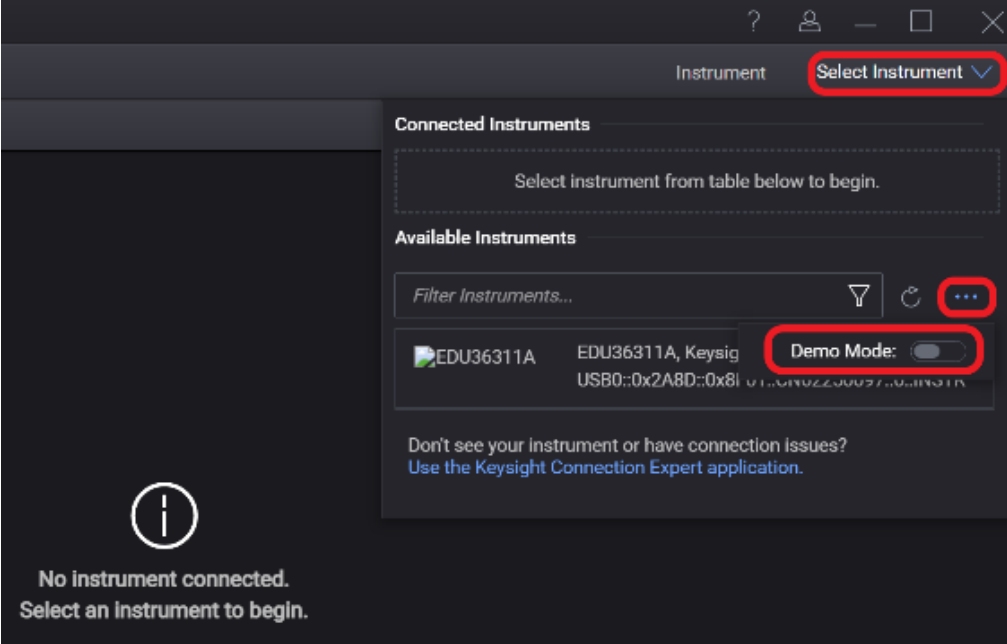


Figure1. Demo mode in standalone application

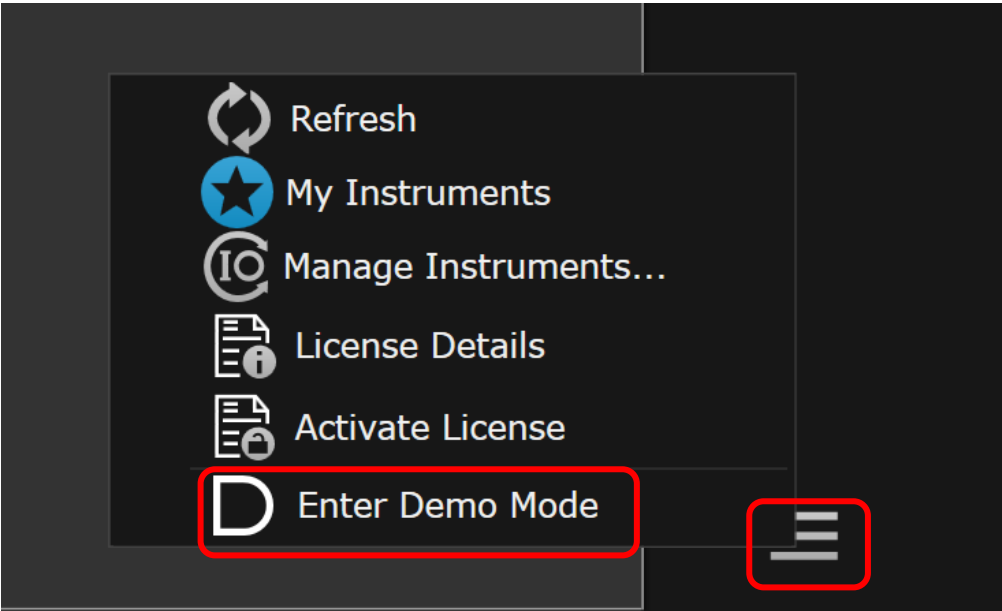


Figure 2. Demo mode in non-standalone application

To assist in the evaluation of BenchVue with physical instruments, BenchVue includes an integrated help file and getting started guide to make setup quick and easy.

License Terms, License Types, and Support Subscriptions

You can now choose your license type (node-locked (fixed), transportable, floating (single site, single region, worldwide), or USB portable), license term (perpetual or subscription), and then choose the KeysightCare Software Support subscription period that best meets your needs. See more details below.

License terms

License term	Description
Perpetual	Licenses can be used indefinitely.
Subscription	Licenses can be used through the term of the subscription.

License types

License type	Description
Node-locked	License can be used on one specified instrument/computer.
Transportable	License can be used on one instrument/computer at a time but may be transferred to another using Keysight Software Manager (internet connection required).
USB portable	License can be used on one instrument/computer at a time but can be transferred to another using a certified USB dongle (available for additional purchase, Keysight part number E8900-D10).
Floating	Networked instruments/computers can access a license from a server one at a time. Multiple licenses may be purchased for concurrent usage. Three types of floating license are available: Single Site : 1-mile radius from the server; Single Region ¹ : Americas; Europe; Asia; Worldwide (export restriction identified in End User License Agreement (EULA))

KeysightCare Software Support subscriptions

Subscription	Description
KeysightCare Software Support	Perpetual licenses are sold with a 12 (default), 24, 36, or 60-month software support subscription. Support subscriptions may be renewed for a fee after that. Software subscription licenses include software support through the term of the license.

¹ Americas (North, Central, and South America, Canada); Europe (European Continent, Middle Eastern Europe, Africa, India); Asia (North and South Asia Pacific Countries, China, Taiwan, Japan)

Ordering New BenchVue Software Apps and Collections

Step 1. Choose your software product.

Step 2. Choose your license: perpetual or subscription.

Step 3. Choose your license type: node-locked, transportable, USB portable, or floating.

Step 4. Depending on the license term, choose your subscription or support duration.

		License term		
Product	License type	Perpetual		Subscription
		License	Support	License & Support
E.g: BV0001B	Node-locked	SW1000-LIC-01	SW1000-SUP-01	SW1000-SUB-01
	Transportable			
	USB Portable ¹			
	Floating (single site, single region, worldwide)			

License term	Perpetual	Subscription
Support Duration	12 months	3 months
	24 months	6 months
	36 months	12 months
	60 months	24 months
		36 months

¹ USB portable license requires a certified USB dongle (available for additional purchase, Keysight part number SW1000-D10)

An Entitlement Certificate is delivered with each purchased software order. Follow the directions on the certificate to redeem your order for your license. License redemption requires an internet connection.

BenchVue Node-locked licenses purchased separately i.e. are node-locked to a PC and not to an instrument.

Floating License Server Requirements

Network Floating licenses require loading a vendor daemon on a license server. This server may be the same PC running BenchVue software or a separate server. Full installation instructions (5951-5739) and support are provided for compatible server operating systems:

Keysight license server software (Imgrd.exe and agileesofd.exe) is supported on: Microsoft Windows 7 Enterprise SP1(32-bit and 64-bit) Microsoft Windows 10 Creators Update (32-bit and 64-bit), 64-bit Red Hat Linux v7.0

Keysight License Manager 6 is supported on: 64-bit Microsoft Windows 7 Enterprise SP1, Microsoft Windows 10 Creators Update 64-bit

The license server software is supported on 32-bit and 64-bit Windows and 64-bit Linux systems, but the Keysight License Manager 6 utility is supported on 64-bit Windows systems only. To setup licensing on 32-bit Windows and on Linux systems, use the processes described in the Manual License Setup section of <https://literature.cdn.keysight.com/litweb/pdf/5951-5739.pdf>.

System and Installation Requirements

Computer operating system

Windows 10,11	64-bit
Computer hardware	Recommended Processor: Intel Core i5 (or equivalent) RAM: 16 GB Storage: 900 MB free space for Windows
Interfaces	USB, GPIB, LAN, RS-232
Display resolution	1280x1024 minimum recommended for single instrument view (higher resolution recommended for multiple instrument view) 1920 x 1080 minimum ¹
Data Exports to Excel or csv ¹	Pathwave supports Microsoft Office 2003 and later ¹

Additional requirements

BenchVue requires a VISA library when used to connect to physical instruments. Keysight IO Libraries Suite, which contains the necessary VISA, will be downloaded and installed automatically when BenchVue is installed if needed. IO Libraries Suite 2024 Update 2 or newer is recommended. IO Libraries Suite information is available at: www.keysight.com/find/iosuite

BenchVue software for PC

Download a free 30-day trial today at: www.keysight.com/find/BenchVue

Keysight also offers a variety of optional start-up assistance and project consulting services to help you maximize your test development productivity.

Contact your Keysight sales specialist
www.keysight.com/find/services

Keysight enables innovators to push the boundaries of engineering by quickly solving design, emulation, and test challenges to create the best product experiences. Start your innovation journey at www.keysight.com.



This information is subject to change without notice. © Keysight Technologies, 2021 – 2026, Published in USA, March 6, 2026, 3121-1067.EN