

# **Installation Note**

---

## **Agilent Technologies N4010A Wireless Connectivity Test Set**

### **N4010A Option 109 Bluetooth Low Energy Tx/Rx Installation Guide**



**Agilent Technologies**

Part Number N4010-90087  
Printed in USA March 2012

**Notice.**

The information contained in this document is subject to change without notice.

Agilent Technologies makes no warranty of any kind with regard to this material, including but not limited to, the implied warranties of merchantability and fitness for a particular purpose. Agilent Technologies shall not be liable for errors contained herein or for incidental or consequential damages in connection with the furnishing, performance, or use of this material.

---

## Option 109 BT 4.0 LE Driver Installation Guide

Products Affected:	N4010A Wireless Connectivity Test Set
Serial Numbers:	All
Options	109
To Be Performed By:	(X) Agilent Service Center (X) Personnel Qualified by Agilent (X) Customer
Estimated Installation Time:	0.5 Hours

While Agilent does recommend that a full calibration be performed after the installation of this upgrade, the end user must ultimately determine whether they want this service or not. If a full calibration is required, arrangements regarding the level of calibration must be made between the end user and the calibration provider

## Introduction

Use this Installation Guide to install the N4010A option 109 Bluetooth low energy Tx/Rx on your PC.

### Requirements

Before beginning the installation and connection ensure you have the following items:

- The N4010A instrument firmware version A.05.05.01 or later.  
To obtain the latest firmware, go to [www.agilent.com/find/n4010a\\_firmware](http://www.agilent.com/find/n4010a_firmware).
- The N4010A Bluetooth low energy Tx/Rx software installer.  
To obtain the latest software installer, go to [www.agilent.com/find/n4010a](http://www.agilent.com/find/n4010a) and follow the download links in *N4010A for Bluetooth*.
- Installation PC meeting the minimum requirements
- Agilent N4010A with licensed options 101 Bluetooth, and Option 109 Bluetooth LE
- Installed I/O libraries. You can download and install the Agilent I/O libraries version 14.1 (or greater) from <http://www.agilent.com/find/iosuite/>.
- USB 2.0, LAN, or GPIB connection from your PC to the N4010A test set

---

## Installation Procedure

Install the N4010A option 109 Bluetooth low energy Tx/Rx on your PC as follows:

1. Download or copy N4010A option 109 Bluetooth low energy Tx/Rx installer on the installation PC.
2. Execute the N4010A Bluetooth LE driver installation file. Wait until the Install Wizard has completed and the Welcome screen is displayed.
3. Click **Next** on the Welcome screen to continue.

---

**NOTE**

The LE Tx/Rx Measurement installation requires that Microsoft .NET Framework version 2.0 (or greater) is already installed on your PC. The installer checks your PC for .NET Framework. If .NET Framework is not found – the installer halts and asks you to install the Framework. The Microsoft .NET Framework can be downloaded from: <http://msdn.microsoft.com/netframework>.

- 
4. When displayed, review the terms of the license agreement, select the appropriate radio button and click **Next** to continue.
  5. Click **Next** to accept the default install path (recommended) or select Change... and enter the new path.
  6. Click **Next** to begin the installation.
  7. Click **Close** when the Install Shield Wizard complete screen is displayed to close the installation.

---

**NOTE**

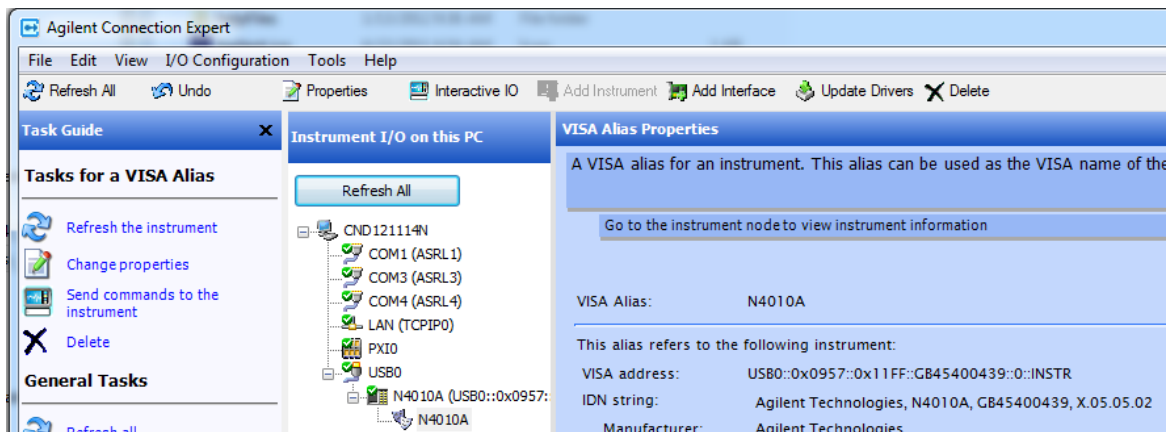
A LAN Crossover cable is required if you intend to use the LAN interface to connect directly to the test set without a LAN bridge/switch in circuit.

---

### Configuring the I/O system

Before starting the N4010A option 109 Bluetooth low energy Tx/Rx, configure the I/O system to ensure communication between the PC and N4010A test set.

1. If you are using Agilent IO libraries click the Agilent IO icon located in your PC tool tray.
2. Select Agilent Connection Expert from the popup menu to display the new connection screen.



3. Select the interface you have used to connect your PC to the test set and click Add instrument.
4. Complete the details in the entry field and test the connection.
5. Add additional test sets as necessary.