

Installation  
Note

**Keysight**  
**N1930xB**  
**PLTS Software**



## 1. Install PLTS Software to Your PC

Before installing PLTS, please check your Operating System and installed Service Packs.

PLTS System Requirements:

PC Requirement	Measurement Mode ONLY	Off-Line Analysis Mode
	In the lab, controlling test equipment and making quick analysis of the results.	In your office, performing “What if...” analysis, characterization, cross-domain analysis, filtering, waveform math, and eye diagram simulation
CPU	1.5 GHz Quad-core	1.5 GHz Quad-core
Main Memory	4 GB	4 GB+
Virtual Memory <sup>a</sup>	6 GB+	6 GB+
GPIB Interface	Keysight 82357A USB/GPIB Interface for Windows or supported GPIB card (any National Instruments or Keysight 82340/41 or 82350 GPIB card)	No GPIB connection is required to utilize PLTS in the off-line mode. Saved (stored) measurement files can be recalled at any time for analysis.
Operating Systems	Windows 10 (64 bit)	Windows 10 (64 bit)
Screen Resolution	1280 x 1024 or greater required	
Display Colors	High Color (16 Bit) or greater	

a. As a general rule for optimum PC performance when using PLTS, virtual memory should be 1.5 to 2 times the size of the main memory.

If your PC meets these requirements, you can proceed with the PLTS installation.

There are two software installation versions:

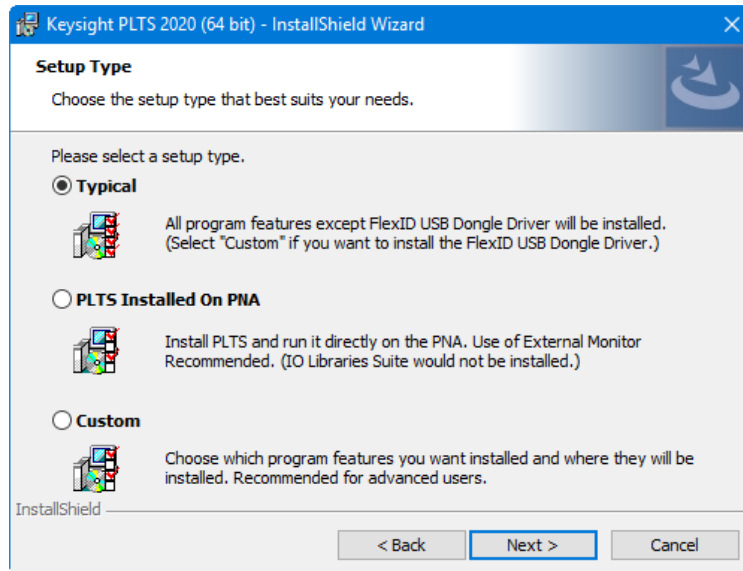
- Keysight\_PLTS20xx\_64bit\_Full\_Install.zip
- Keysight\_PLTS20xx\_64bit\_Upgrade.exe

The Keysight\_PLTS20xx\_64bit\_Full\_Install.zip is a full installation.

The Keysight\_PLTS20xx\_64bit\_Upgrade.exe is an upgrade installation which does NOT include the I/O library, Python, Matlab runtime, HPP, .Net, and Pathwave license manager. If you already have the previous PLTS version installed, you can use this upgrade version.

1. You can download the PLTS software from the Keysight Software Management System (KSM) at <http://www.keysight.com/find/softwaremanager>. For instructions on downloading the software, refer to your entitlement certificate that you received via email.
2. If installing the full version:
  - a. Download the PLTS install bits zip file Keysight\_PLTS20xx\_64bit\_Full\_Install.zip and PLTS installation note PDF file.

- b. Unzip the PLTS install bits zip file to a directory.
  3. If installing the upgrade version:
    - a. Download the PLTS install bits file Keysight\_PLTS20xx\_64bit\_Upgrade.exe.
    - b. Run the self-extract upgrade file to a directory.
  4. Run the Setup.exe to install the PLTS software.
  5. Follow the InstallShield Wizard prompts to Install or Upgrade the PLTS software and other software products.



- Typical: Select for all program features to be installed.
- PLTS Installed on PNA: Select to run the program directly on a PNA. Use of an external monitor is highly recommended. IO Libraries Suite would not be installed.
- Custom: Select to choose the program features you want installed. Click on an icon to the left of the feature name to change how the feature is installed.

## 2. Licensing and Start the PLTS Software

Important PLTS License Notes:

From July 1, 2020, PLTS2020 update1 release (PLTS2020U1), we implemented Keysight Advanced License (KAL). From PLTS2020U1, PLTS uses the KAL license.

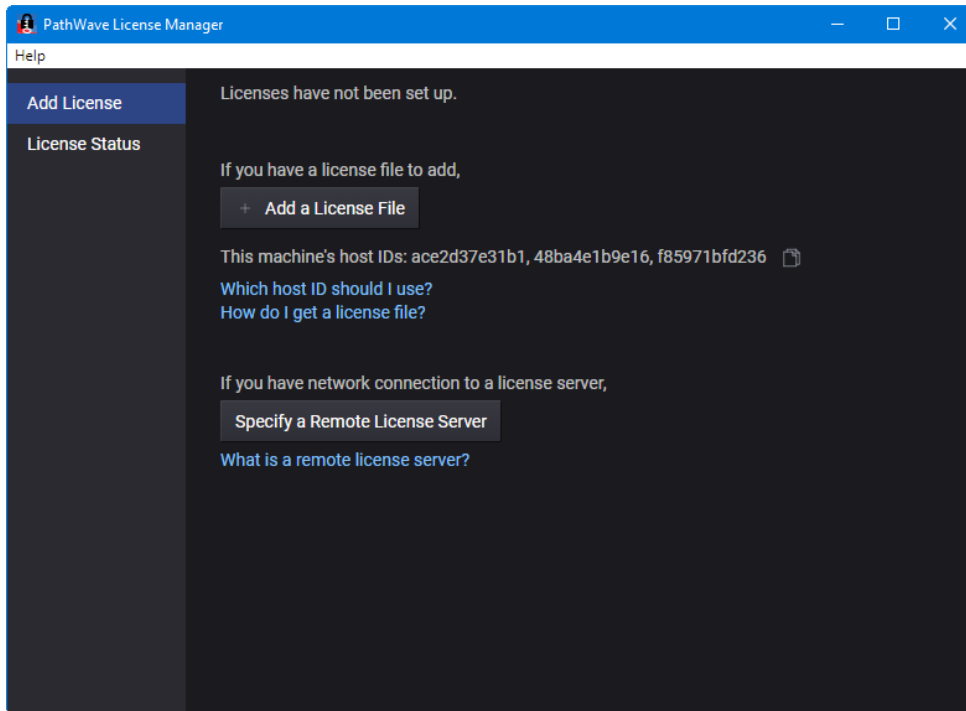
For the KAL license, users need to use Keysight PathWave License Manager to add and manage the licenses.

PLTS software will automatically install “Keysight PathWave License Manger”, “PLTS legacy License Management” and “PLTS Legacy Reset” to your PC.

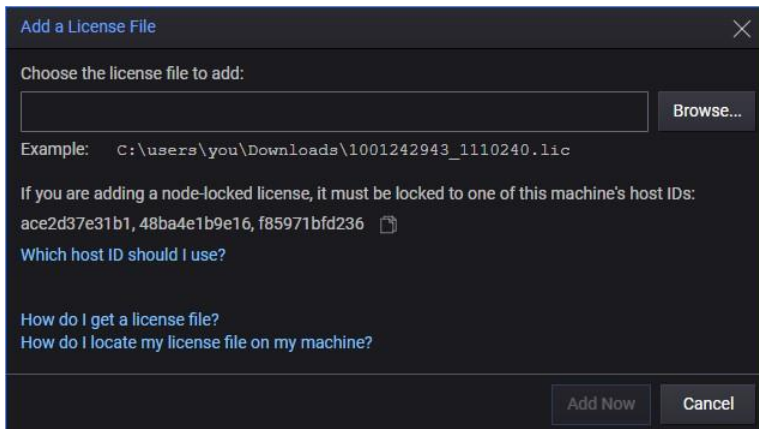
Before the first start of the PLTS software, the KAL license in “Keysight PathWave License Manager” must be added.

## 2.1 Procedure to add Keysight Advanced License (KAL)

1. Open "Keysight PathWave License Manager" in your Windows start menu to add your KAL licenses:

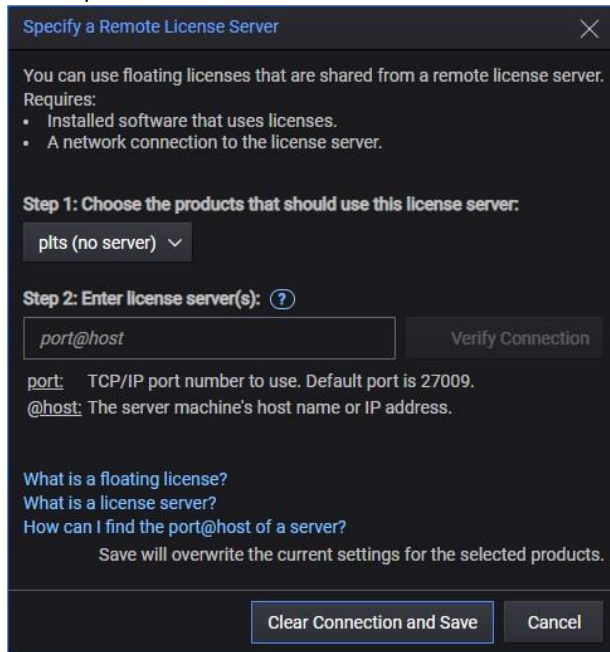


2. To add a license to the PC, click on the Add a License File button, choose the license file to add, then click on the Add Now button.

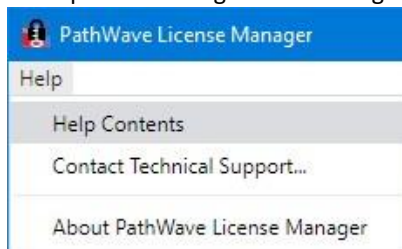


3. To add a license to a server, perform the following:
  - a. Click on the Specify a Remote License Server button.
  - b. Choose the products that will use the license server. The drop-down list shows all licensed Keysight products installed on your computer. Check the products that need to use the new license server(s).
  - c. Enter the license server port\_number@host\_Name of each server. If you have more than one server, separate them with commas. You can get the port number and host name from your license server administrator.

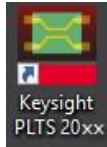
- d. Click on the Verify Connection button to ensure a connection to the server and complete the setup.



4. For more information, refer to the PathWave License Manager Help by clicking on the Help link at the top of the dialog then selecting Help Contents.



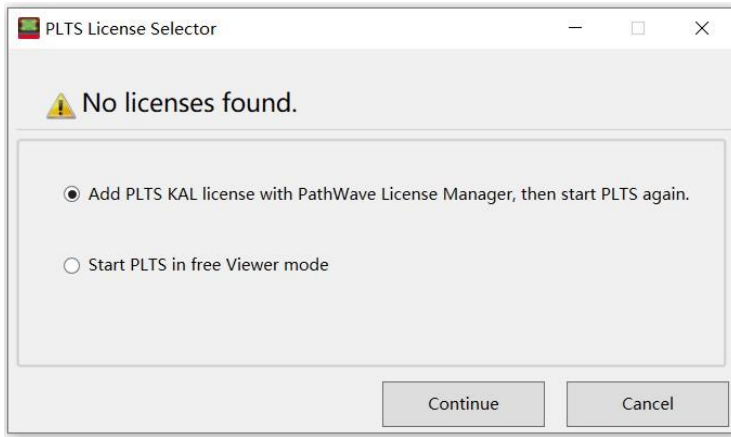
5. Start the PLTS software by double-clicking the Keysight PLTS icon on the PC desktop:



6. You may also start PLTS by selecting **Start**, then **Keysight PLTS <version>**, then **Keysight PLTS <version>**.

## 2.2 If you didn't add the license before the first start of PLTS

If you didn't add the license before the first start of PLTS, when PLTS starts and can't find a qualified license, PLTS will display a dialog with instructions. Follow the steps in the dialog to add the licenses or run in free viewer mode without a license:



---

NOTE      Make a back-up copy of the license file if you have not already done so.

---



© Keysight Technologies 2015 - 2022 Print Date: July 19, 2021  
Supersedes: January 19, 2022

This information is subject to change without notice.

