

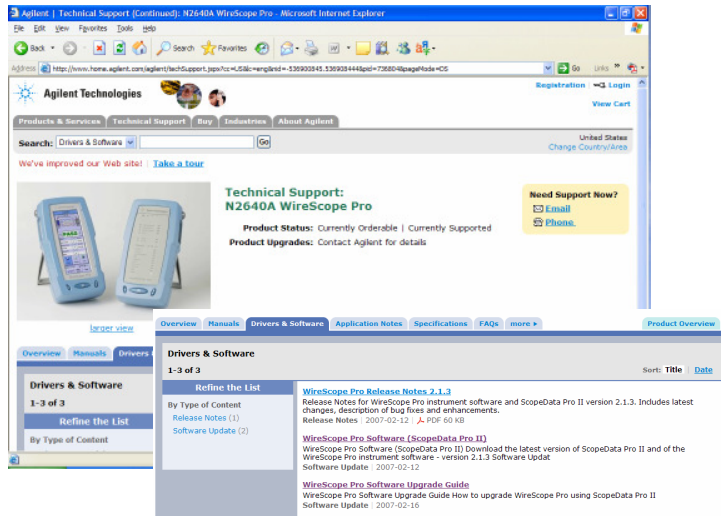
WireScope™ Pro Software Upgrade Version 2.5

Quick Reference Guide (ScopeData™ Pro II)

Using USB connection between PC and WireScope Pro

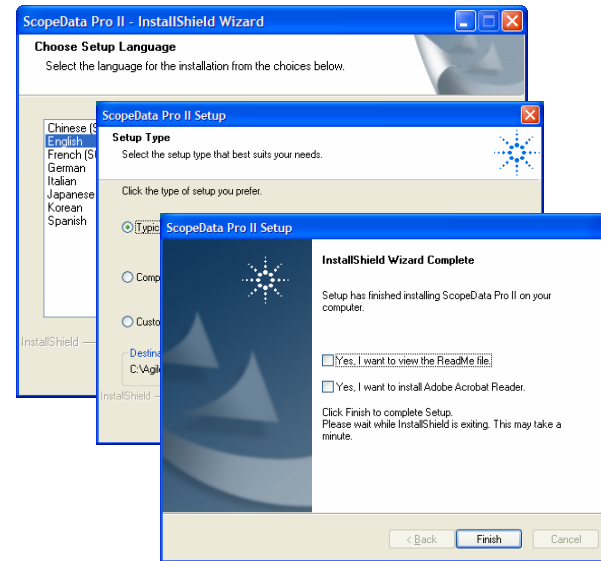
Before any software upgrade, please back up all test data into a safe location.

Step 1: Visit <http://www.wirescope.com> download the latest software. N2640A ► Technical Support ► Drivers & Software ► ScopeData Pro II



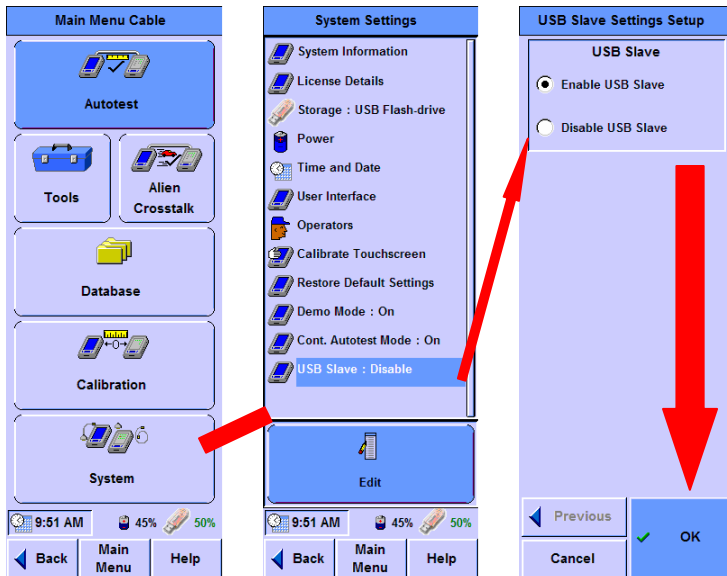
Step 2: Double Click the installer to start the installation.

Version 2.5 will automatically un-install previous version of the ScopeData Pro II installed



NOTE: In order for the USB direct connection to work, the WireScope Pro must be upgraded to software version 2.5 or higher. For WireScope Pro with software version lower, please upgrade to version 2.5 via USB Flash Drive.

Step 3: Activate USB Slave Mode on the WireScope Pro. From the *Main Menu*, Select *SYSTEM – USB Slave – Edit – Enable USB Slave - OK*



Important: Please revert USB slave mode to **Disable** for normal cable test. To use **USB Flash Drive**, **USB Slave Mode** must be **Disabled**.

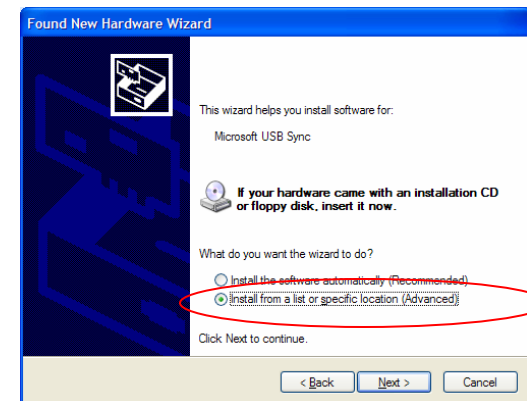
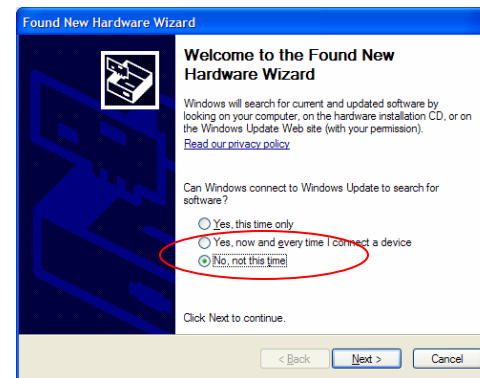
Back up all test data to a safe location.

At this point of time, please power the WireScope Pro via AC/DC power adapter until the entire upgrade process is completed.

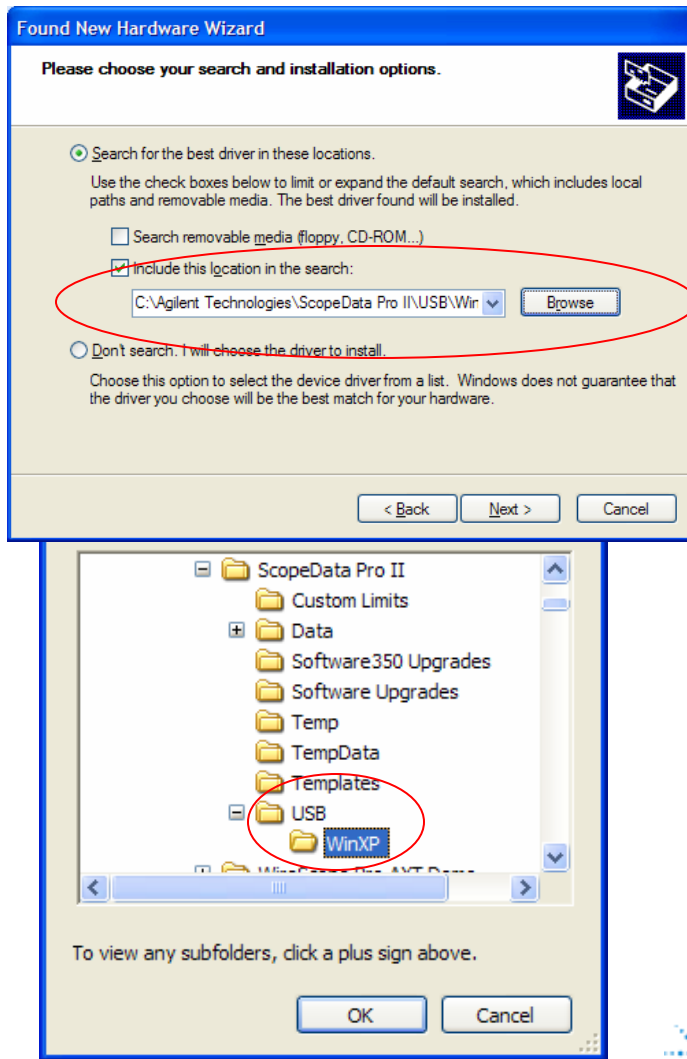
Step 4: Format the internal memory of the WireScope Pro via the *Restore Default Settings* menu.

Step 5: Connect WireScope Pro and the PC together using the supplied USB

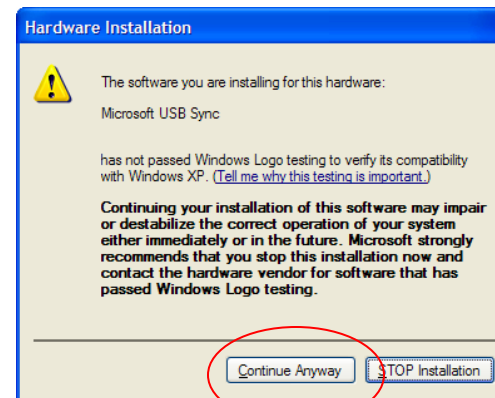
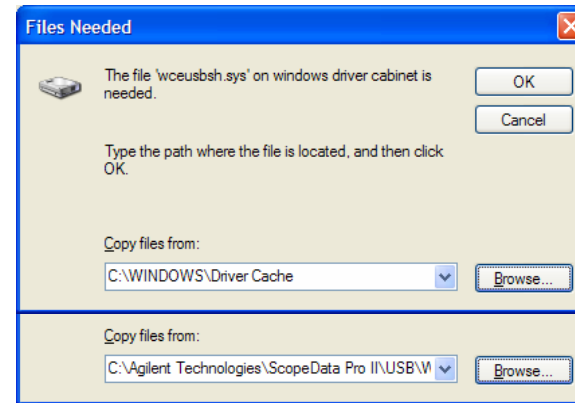
If this is the first time using USB cable connection, Windows will prompt for the USB driver to be installed.



The required USB Drivers are found in the ScopeData Pro II - USB - WinXP folder, as shown below.

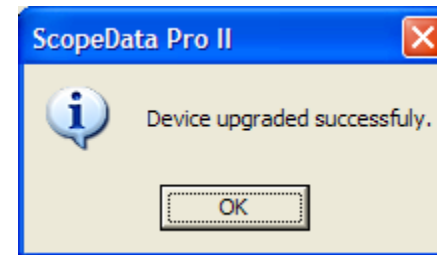
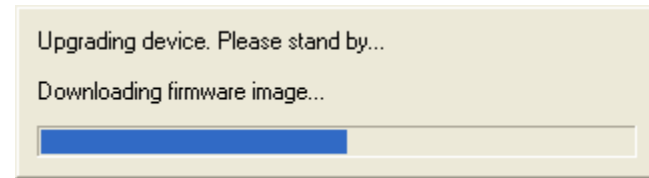
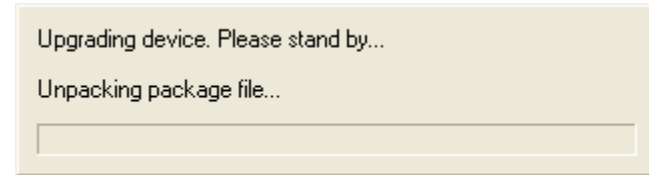
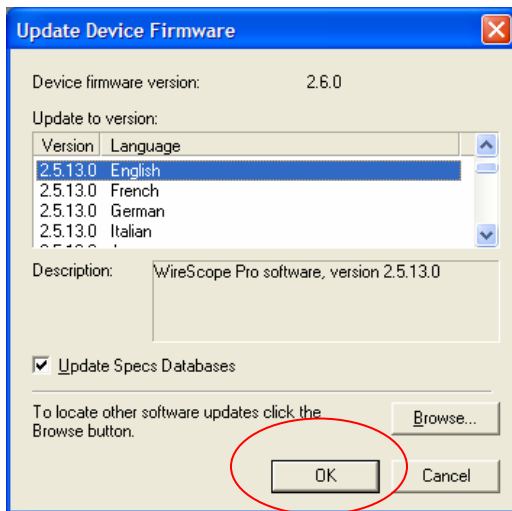
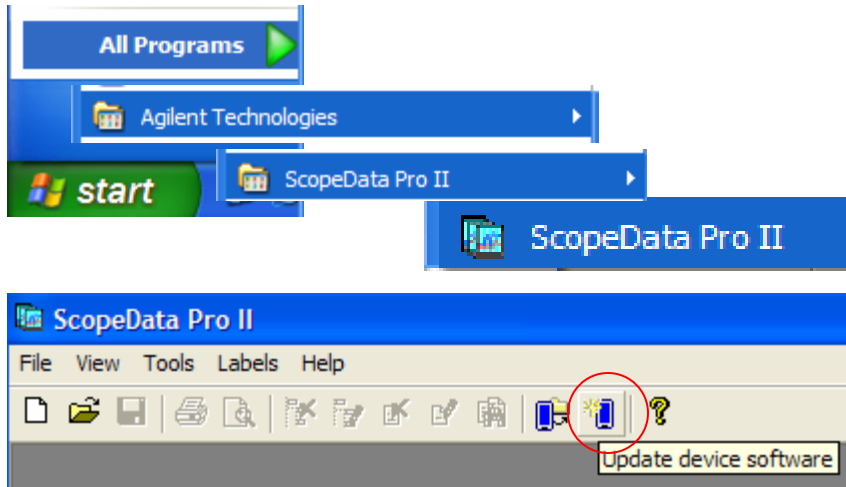


When prompted for the wceusbsh.sys driver, browse to the same folder as in previous step.



Click Continue Anyway. Click Finish when done

Step 6: Launch the ScopeData Pro II software from the Windows *Start* button.



After successful upgrading, WireScope Pro will reboot automatically.

Note: Time taken to upgrade the WireScope Pro using the direct USB cable connection is approximately 15 mins. For faster turn-around, please consider using the USB Flash Drive method.

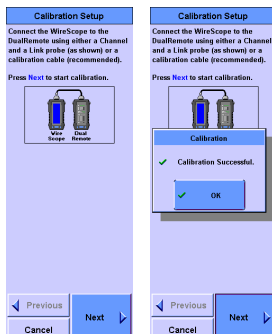
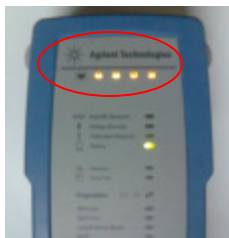
Step 7: Connect the DualRemote Pro to the Upgraded WireScope™ Pro and perform a calibration to upgrade the DualRemote's Firmware.

Ensure that the DualRemote is in the READY state. The 4 LEDs on the top of the DualRemote has to be in ORANGE

Upgrading should be done using a Link SmartProbe and a Channel SmartProbe between the WireScope Pro and the DualRemote Pro respectively.

The upgrading on the DualRemote takes approximately 10 min. Power cycle the DualRemote only after 10 min has elapsed from the start of the upgrading process. Do not power off the DualRemote when the Progress LED is flashing

Ensure that the DualRemote is in the READY state before calibration. The 4 LEDs on the top of the DualRemote MUST be in ORANGE.



Note: You will be prompted a message if the DualRemote Pro is detected to have different version of firmware compare with the WireScope™ Pro Main unit. Just confirm if you want to proceed with calibration to upgrade the DualRemote's firmware.

You are now ready to begin to use your upgraded WireScope™ Pro and DualRemote Pro for measurement.

For more information, please contact your Agilent Sales Representative or the nearest Technical Support Center at :

www.agilent.com/find/tm_assistance

2.5.13 - upgrade