

WireScope™ Pro Software Upgrade

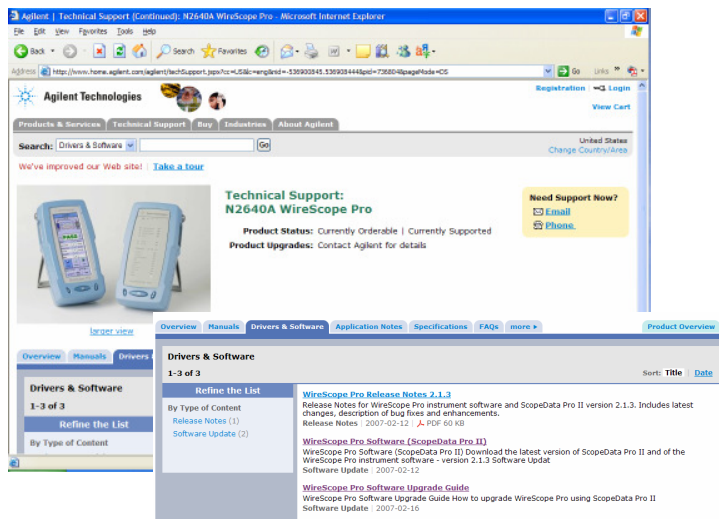
Quick Reference Guide (ScopeData™ Pro II)

Using USB Flash Drive

Please back up all test data to a safe location before performing any upgrade procedure

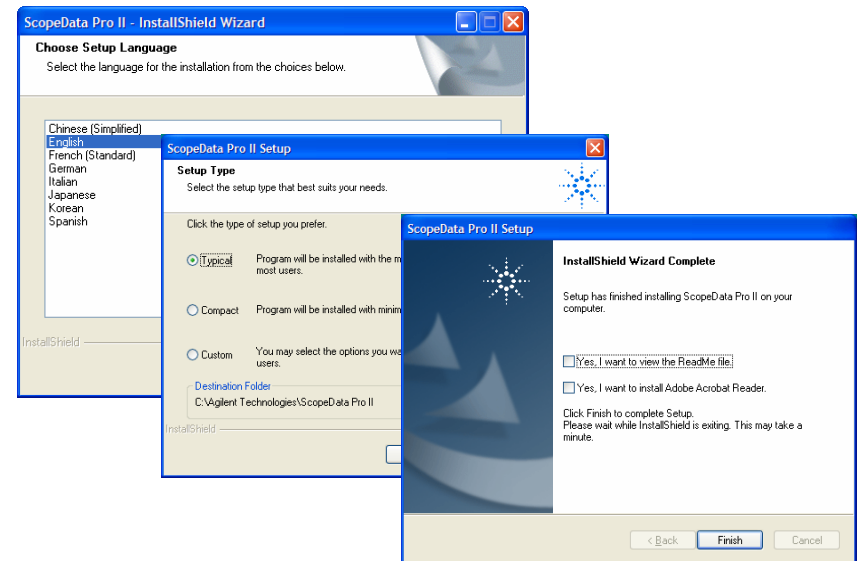
Step 1: Visit <http://www.wirescope.com> download the latest software. N2640A ► Technical Support

► Drivers & Software ► ScopeData Pro II

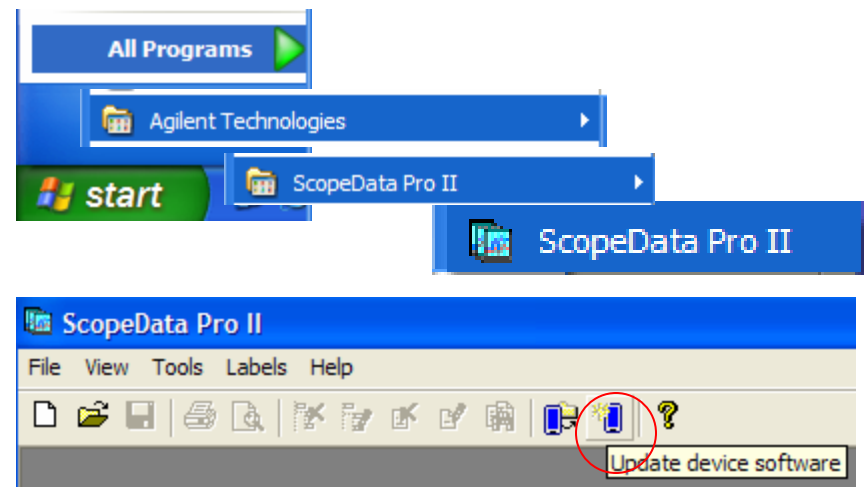


Step 2: Double Click the installer to start the installation.

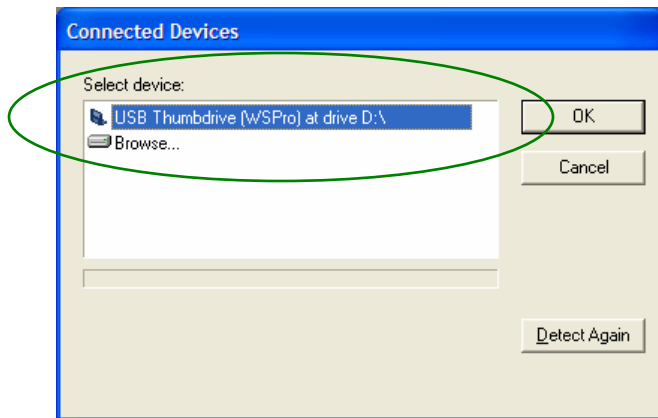
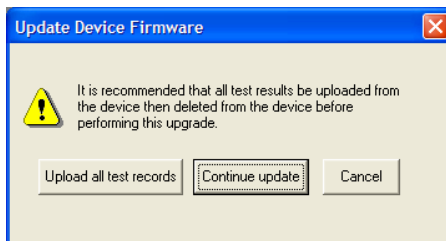
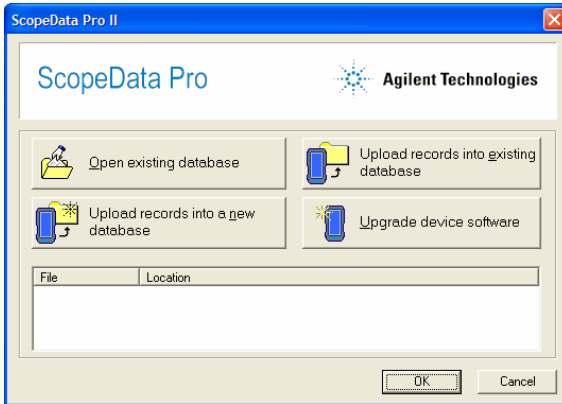
If you have a previous version of the ScopeData Pro II, please un-install. Version 2.5 or higher will automatically un-install any previous versions.



Step 3: Launch the ScopeData Pro II software from the Windows Start button.



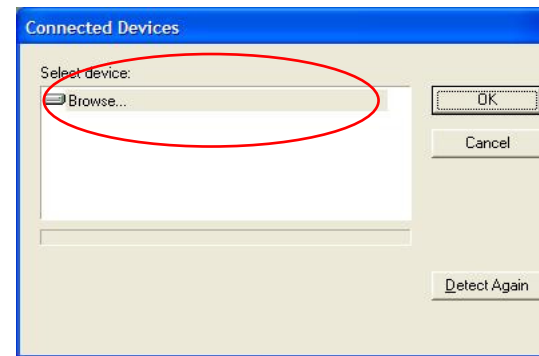
Step 4: Insert USB flash drive into the PC's USB port and select *Upgrade Device Software*. Follow the instruction



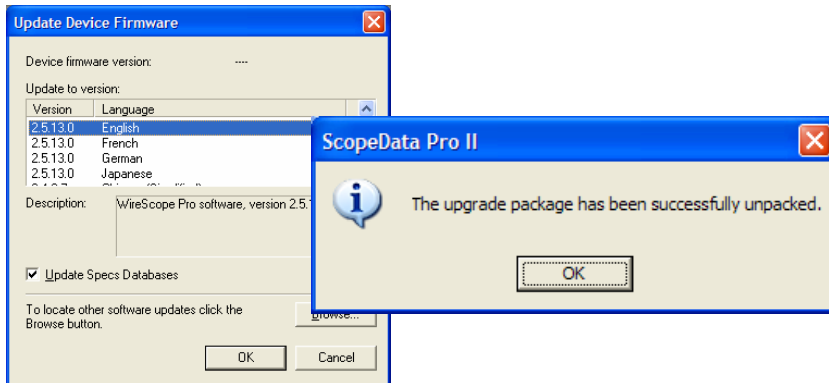
Note¹: If the USB flash drive is not detected as shown in the **red** circle even if it is already connected to the PC's USB port.

Please insert the drive into the WireScope™ Pro Main unit's USB port to perform a merging of firmware onto the flash drive.

Please wait for a few minutes for the process to complete before inserting the USB flash drive into the PC's USB port again. This time the flash drive should be detected as shown in the **green** circle.



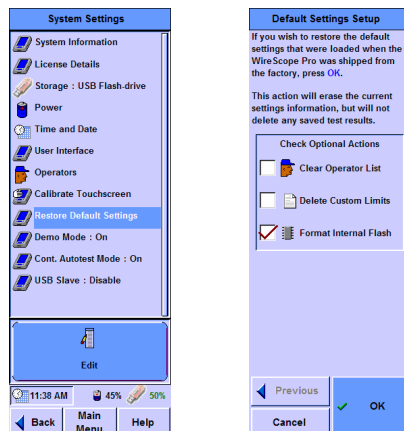
Note²: If you get the message "*Error setting up USB Flash Drive*" after inserting the drive into WireScope™ Pro's USB port, this shows that your USB flash drive is not compatible with WireScope™ Pro. Please replace it with another one. Next, perform **Step 4** again and continue from there.



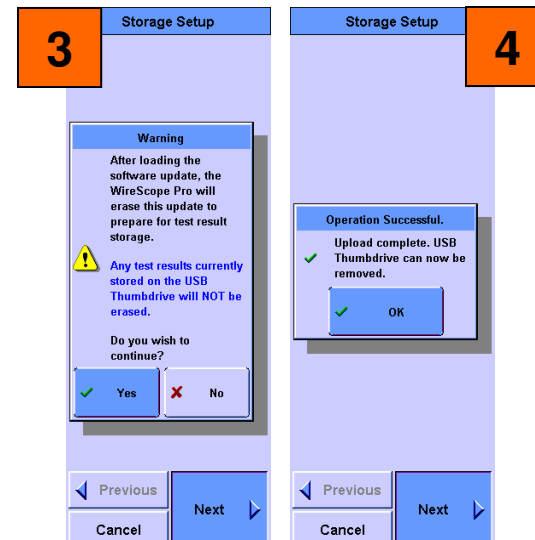
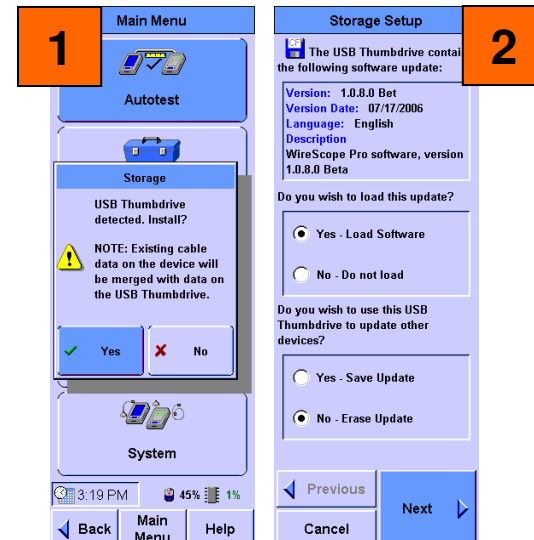
You have downloaded the necessary files into the USB flash drive. The USB flash drive is now ready to be use for upgrading your WireScope™ Pro.

Please ensure that you have backup your test data before proceeding forward.

STEP 5: At this stage, you MUST format the internal memory via the System – Restore Default Settings of the WireScope Pro and power the WireScope Pro and DualRemote Pro via AC/DC power adapter.



Step 6: When WireScope Pro powers back on, insert the USB flash drive into the WireScope™ Pro's USB port and follow the onscreen instructions



Step 7: Connect the DualRemote Pro to the Upgraded WireScope™ Pro and perform a calibration to upgrade the DualRemote's Firmware.

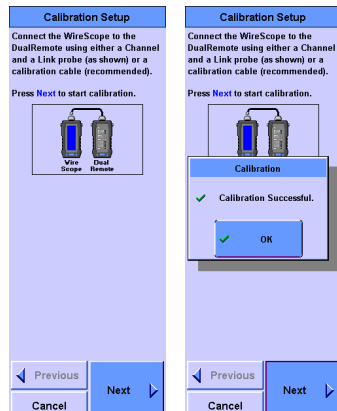
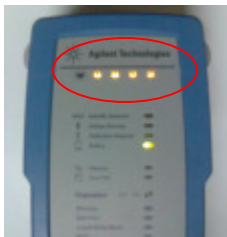
Ensure that the DualRemote is in the READY state. The 4 LEDs on the top of the DualRemote has to be in ORANGE

Upgrading should be done using a Link SmartProbe and a Channel SmartProbe between the WireScope Pro and the DualRemote Pro respectively.

The upgrading the DualRemote takes approximately 10 min. Do NOT Power cycle the DualRemote Pro until 10 min has elapsed from the start of the upgrading process.

Step 8: Ensure that the DualRemote is in the READY state. The 4 LEDs on the top of the DualRemote has to be in ORANGE.

Perform the calibration between WireScope Pro and DualRemote Pro



Note³: You will be prompted a message if the DualRemote Pro is detected to have different version of firmware compare with the WireScope™ Pro Main unit. Just confirm if you want to proceed with calibration to upgrade the DualRemote's firmware.

You are now ready to begin to use your upgraded WireScope™ Pro and DualRemote Pro for measurement.

For more information, please contact your Agilent Sales Representative or the nearest Technical Support Center at :

www.agilent.com/find/tm_assistance

Remarks:

28 Mar 2007 for software version 2.1.3. DR LED Status
13 Sep 2007 for software version 2.4.3 DR upgrade status