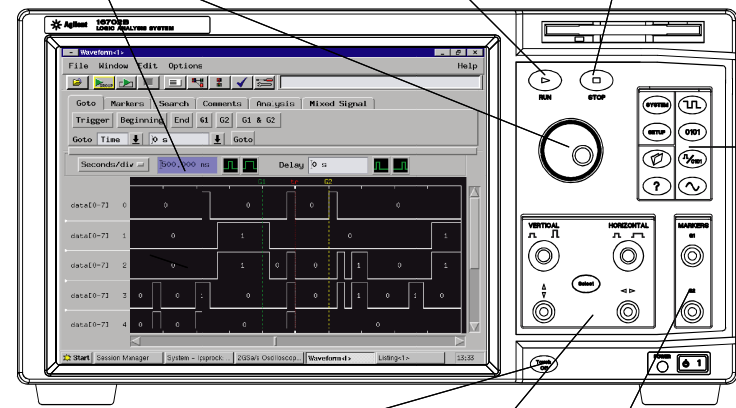


# Front Panel

When a field is blue, it can be adjusted with the large knob

RunSingle/Run Repetitive

Stop/Cancel



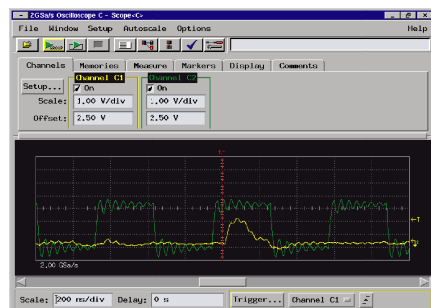
Touch On/Off

Vertical & horizontal scaling and scrolling knobs

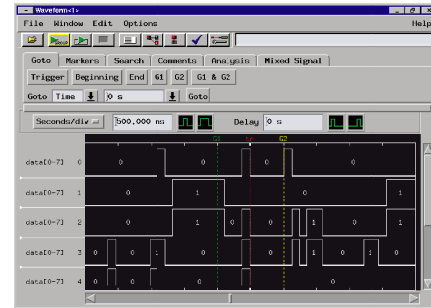
Global marker (G1 and G2) knobs



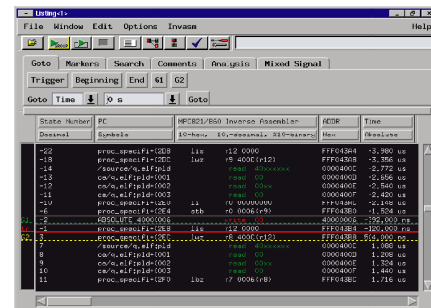
Oscilloscope



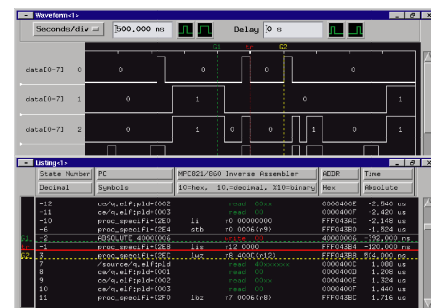
Waveform Display



Listing Display



Mixed Displays



# Touch Screen Tips

- The knobs and buttons on the front panel provide easy access to common functions. It is often easier to use the front panel instead of the touch screen.
- Use firm pressure to use the touch screen. This will not damage it. The touch screen is resistive, so a light touch has no effect.
- When a text field turns blue, you can use the large knob on the front panel to change the value.
- When a text field turns blue, touch it again to open a keypad dialog.
- Tap the screen to bring up a menu in the displays (such as listing and waveform). The menu will not appear until your finger is lifted from the screen.
- If you're not using constant pressure when moving a marker, it is possible for the system to interpret the action as a zoom in the waveform display. If this happens, tap the screen and select "undo zoom" in the menu.
- If you're having trouble selecting items on the screen with your finger, try using the included stylus.

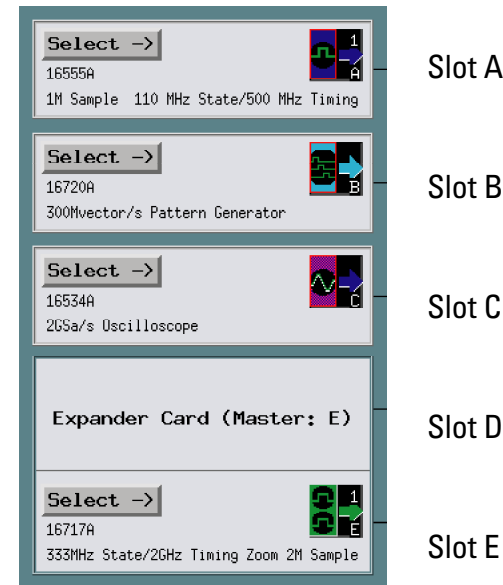


# System Window











Use the Window menu to navigate to another window.



To use an instrument, click on its "Select->" button.



If a module is in Slot A, then its pods begin with "A", such as "A1".

-  File Manager
-  Run Single/Run Repetitive
-  Stop/Cancel
-  System
-  Workspace
-  Intermodule
-  Run Status
-  System Administration (Network, SW Install, etc.)
-  Microprocessor/Bus Setup Assistant
-  Demo Center

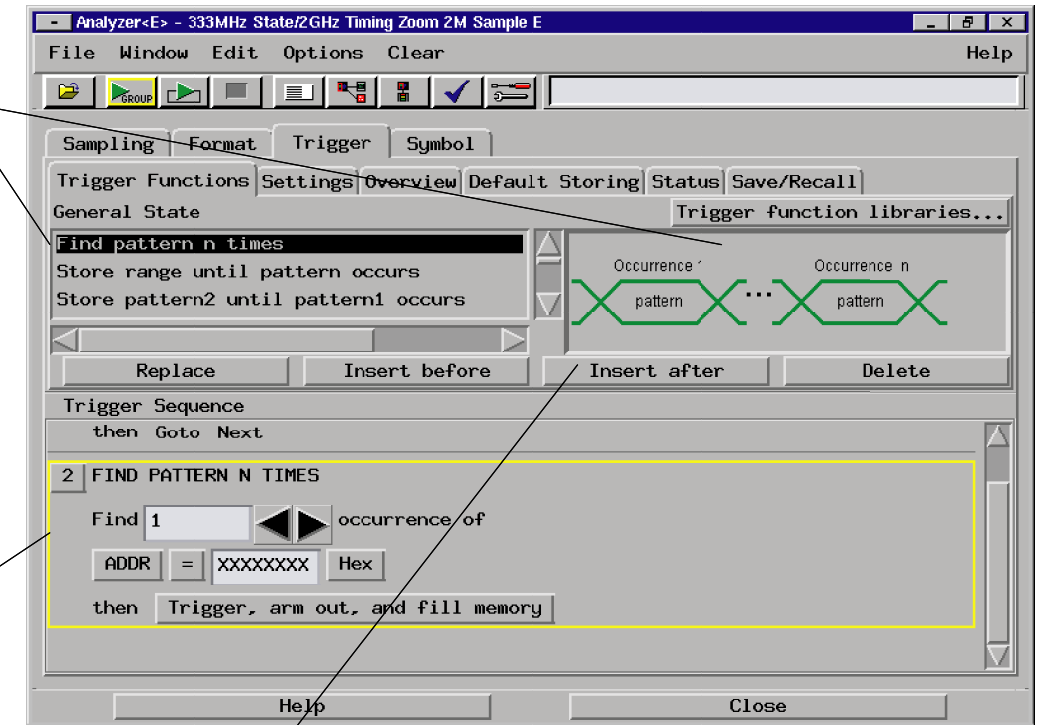
# Trigger Tab

The easiest method to set up a trigger is to find the desired trigger function in the list, double click on it, and fill in the details in the area below. However, Advanced functions (also called "User Levels") are available if there is no trigger function that matches your needs.

To see the matching graphic, single click on a function.

To replace the selected sequence level, double click on a function.

The yellow box indicates which sequence level is selected.



These buttons use the currently selected trigger function.