

M980xA PXIe Vector Network Analyzer Modules

CAUTION

Please use ESD Precautions when handling and operating

System Requirements

Description	Requirements
Operating system	Windows 7 SP1 or Windows 10 (64 bit) ^a
Processor speed	Intel i5 6 th Generation or newer/ Intel Xeon E3 v3 or newer
Available memory	4 GB minimum
Available disk space	2 GB available drive space minimum
Display resolution	1024 x 768 minimum

a. Must install IO Libraries Suite 2018 Update 1 or greater.

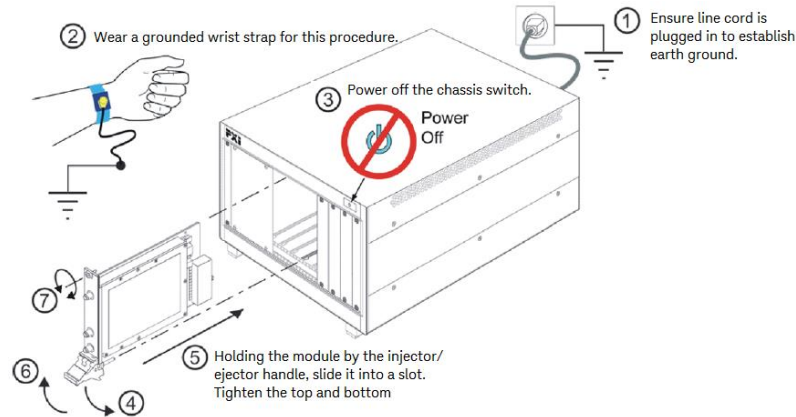
Hardware Requirements

Description	Requirements
Chassis	PXIe or PXI-H chassis slot
Embedded Controller	Keysight M903xA or an equivalent embedded controller that meets the following requirements: <ul style="list-style-type: none">- A PXIe system controller (PXI-1 embedded controllers are not compatible)- Utilizes a 2x8, 4x4, or 1x8 PXIe system slot link configuration.- Runs one of the operating systems listed in System Requirements (above)

Installation Procedure

1. Install the embedded controller module into a compatible chassis. Keysight PXIe chassis is recommended. See the <https://www.keysight.com/find/pxi-chassis>.
2. Connect peripherals (mouse, keyboard, monitor) and power up the chassis.
3. Install the Keysight IO Libraries Suite from <https://www.keysight.com/find/iosuite>. Follow the installer prompts.

4. Download the network analyzer software from <https://www.keysight.com/support/M9800A> webpage, click the Drivers, Firmware & Software tab.
5. Execute and Install the network analyzer software according to the installer prompts.
6. Install M9800A PXIe module as below. After installation, power on the chassis switch and click the Network Analyzer icon to execute the VNA application.



The PXI chassis has multiple air intakes located on the lower sides, lower front and bottom front of chassis. Fan exhausts through the rear of the chassis.



7. Select the required M980xA, then click RUN. See the Help: Quick Start > SFP Launcher for more information.

Additional information:

Topic	URL
Product information	https://www.keysight.com/products/M9800A
Manuals (Help)	https://www.keysight.com/manuals/M9800A
Technical support	https://www.keysight.com/support/M9800A
Multiple modules setup	https://www.keysight.com/find/m980xa-mm
Connector Care	http://na.support.keysight.com/pna/connectorcare/Connector_Care.htm
Contacting Keysight	https://www.keysight.com/find/assist

This information is subject to change without notice.
© Keysight Technologies 2019
Edition 2, Jun 2019



M9800-90000

www.keysight.com