

Keysight Technologies Scienlab Emulator Control

SL1092A



Emulator Control Operation Software License

Software for system parameterization, visualization of the system status and manual control of the Scienlab Emulators. Installation will be done on customer computer with Microsoft Windows 7x (or later) Operating System.

- Adjustment of current and voltage limits and alarm limits
- Listing of current warnings, fault annunciation, and general system status
- Information of all actual values
- Emergency stop alarm or resulting error message receipt and deletion

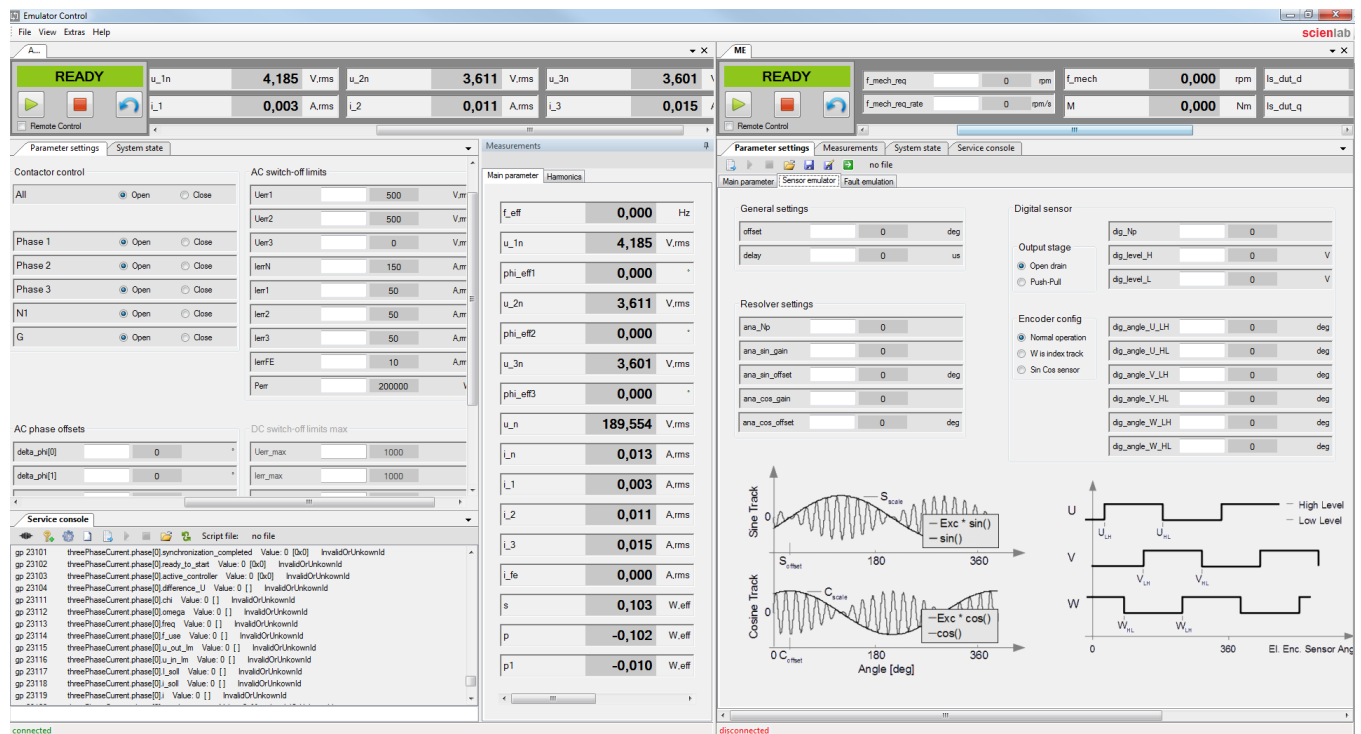


Figure 1: Screenshot Emulator Control

Learn more at: www.keysight.com

For more information on Keysight Technologies' products, applications or services, please contact your local Keysight office. The complete list is available at: www.keysight.com/find/contactus



Find us at www.keysight.com

This information is subject to change without notice. © Keysight Technologies, 2019, Published in USA, May 6, 2019, 5992-3499EN