

Keysight Technologies

B4623B Bus Decoder for LPDDR, LPDDR2, LPDDR3, or LPDDR4 Debug and Validation

Data Sheet

Physical Address	DDR Bus Decode	Cycle Type
	Deselect	Idle
		Idle
		Idle
D29 5C00	Read CS-0 BA-3	Read Command
	Row Address = 0x34a5	*
	Col Address = 0x100	*
	Burst Type = Interleave ...	*
D29 5C00	mem read 0x-----00	*
D29 5C04	mem read 0x-----00	*
D29 5C08	mem read 0x-----00	*
D29 5C0C	mem read 0x-----aa	*
D29 5C10	mem read 0x-----55	*
D29 5C14	mem read 0x-----cc	*
D29 5C18	mem read 0x-----00	*
D29 5C1C	mem read 0x-----ff	*
	Clock is disabled	0000 0100
	Deselect	Idle

B4623B bus decode shown in listing window—LPDDR2 example.



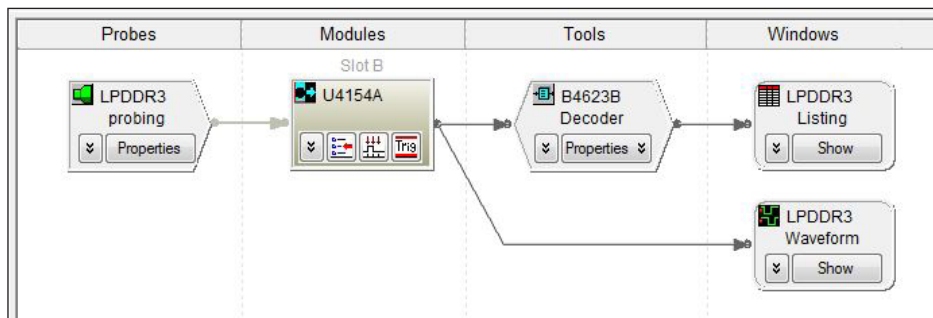
Introduction

Accelerate your time to insight using the B4623B bus decoder for LPDDR, LPDDR2, LPDDR3, or LPDDR4 debug and validation. The B4623B provides complete protocol decode of memory transactions using a Keysight logic analyzer as the analysis execution engine. The B4623B protocol-decode software translates acquired signals into easily understood bus transactions showing associated data bursts, for all LPDDR/2/3/4 data rates. Valid Read and Write commands are decoded to include Row and Column Addresses and the complete data burst associated with the command. The B4623B bus decode software anticipates key system attribute inputs (Burst length, CAS Latency and CAS Write Latency, Chip Selects) from default LPDDR/2/3/4 probing configurations and/or DDR Setup Assistant tool to accelerate decode of LPDDR/2/3/4 bus signals.

Key features and benefits:

- Decodes LPDDR, LPDDR2, LPDDR3, or LPDDR4 acquired traces on Keysight logic analyzer or off-line
- Displays commands, protocol transaction type, physical/row/column/bank addresses, and data in the listing viewer
- Data bursts are associated and displayed with appropriate Read and Write transactions
- Data is displayed at any level of detail from protocol to binary
- Anticipates key system attribute inputs from default probing configurations and/or DDR Setup Assistant tool
- Allows user input to customize decoder properties

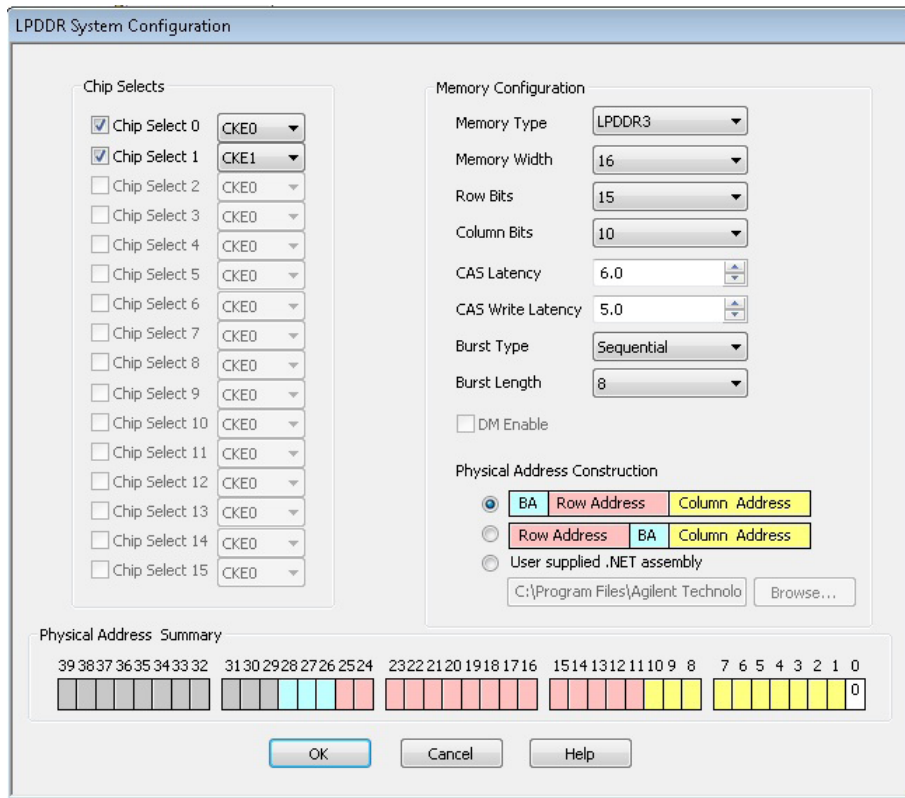
After installing the logic analyzer software and the B4623B software and loading the default configuration for your LPDDR/2/3/4 memory, the B4623B icon will show up in the Keysight Technologies, Inc. logic analyzer overview window between the logic analyzer module icon and the listing icon.



LPDDR3 example showing B4623B icon in Keysight logic analyzer overview window, between logic analyzer module and listing.

The properties button on the B4623B icon allows the selection of memory variables. Typically, preferences are filled out for the user in default configurations for specific LPDDR/2/3/4 probes and by the DDR Setup Assistant software tool*, as it helps walk the user through state mode setups.

* DDR Setup Assistant and Eyefinder software is available free of charge. DDR Setup Assistant provides a series of semi-automated steps to simplify state mode measurements for DDR2/3/4 and LPDDR/2/3/4 with U4154B or U4154A logic analyzer modules. The DDR Setup Assistant and Eyefinder software also provides a DDR Eyefinder tool specifically for the 16962A module using the read and write data valid windows for accurate sampling of data.



B4623B properties window, LPDDR3 example.

The B4623B bus decoder for LPDDR/2/3/4 debug and validation operates with multiple Logic Analyzers from Keysight Technologies. Logic analyzer selection criteria includes: logic analyzer specifications and characteristics, maximum DDR technology data rate, and minimum data valid windows of the data eyes at the logic analyzer probe point.

Keysight’s 4.0GT/s U4154B or U4154A logic analysis modules are recommended for all LPDDR, LPDDR2, LPDDR3, or LPDDR4 configurations.

Logic analyzer recommendations:

Keysight logic analysis module recommendations for LPDDR/2/3/4 technologies	LPDDR	LPDDR2	LPDDR3	LPDDR4
U4154A* /B	Yes	Yes	Yes	Yes
16962A	Yes	Yes	No	No
16950B	Yes, up to 667 Mb/s	No	No	No
16951B	Yes, up to 667 Mb/s	No	No	No
16910A/11A with option 500	No	No	No	No
16800A series with option 500	No	No	No	No

* U4154A is limited to merging two modules

Refer to www.keysight.com/find/logic for a comparison view of Keysight logic analyzer modules.

Refer to your logic analyzer module data sheet or specific LPDDR/2/3/4, probing solution for logic analyzer module configurations.

Default configurations for B4623B bus decoder for LPDDR/2/3/4 debug and validation are loaded for recommended E5406A Soft Touch Pro footprints, when the B4623B SW is installed.

For custom embedded applications, where changes are made to default configurations, refer to on-line help in the logic analyzer software application for details on the B4623B bus decoder label requirements. For new embedded application configurations, Keysight recommends using the DDR Configurator Creator tool to create a configuration for your unique embedded system. DDR Configurator Creator tool is provided at no cost with version 5.80 and higher software.

Users of the B4623A LPDDR, LPDDR2 bus decoder can upgrade to the B4623B bus decoder for LPDDR/2/3/4 debug and validation by ordering the B4621U.

B4623U upgrade from B4623A bus decoder for LPDDR, LPDDR2 to B4623B bus decoder for LPDDR/2/3/4 requires a prior license for B4623A.

Related literature:

Publication title	Pub number
U4154B 4 Gb/s State Mode Logic Analyzer Module Data Sheet	5992-0108EN
U4154A Logic Analyzer Module Data Sheet	5990-7513EN
Keysight Technologies 16900 Series Logic Analysis System Color Brochure	5989-0420EN
Keysight W3630A Series DDR3 DRAM BGA Data Sheet	5990-3179EN
B4622B DDR2/3/4 LPDDR/2/3/4 Protocol Compliance and Analysis Tool Data Sheet	5990-3300EN

For software downloads refer to: www.keysight.com/find/la-sw-download

Required/recommended software	
Logic and protocol analyzer software (required)	
B4623B (required)	Bus decoder for LPDDR/2/3/4 debug and validation
DDR Setup Assistant and DDR Eyefinder (recommended)	
Related software	
B4622B	Protocol compliance and analysis toolset for DDR/2/3/4 and LPDDR/2/3/4
B4621B	Bus decoder for DDR2, DDR3, or DDR4 debug and validation
Related products	
U4154B	Logic analyzer module
U4154A	Logic analyzer module
16962A	Logic analyzer module
E5406A	Pro Series soft touch connectorless probe - single-ended, for 90-pin cable

For additional LPDDR/2/3 probing options, contact your local Keysight representative www.keysight.com/find/contactus

For additional analysis software, refer to www.keysight.com/find/logic-sw-apps

myKeysight

myKeysight

www.keysight.com/find/mykeysight

A personalized view into the information most relevant to you.



www.lxistandard.org

LAN eXtensions for Instruments puts the power of Ethernet and the Web inside your test systems. Keysight is a founding member of the LXI consortium.



Keysight Assurance Plans

www.keysight.com/find/AssurancePlans

Up to five years of protection and no budgetary surprises to ensure your instruments are operating to specification so you can rely on accurate measurements.



www.keysight.com/go/quality

Keysight Technologies, Inc.
DEKRA Certified ISO 9001:2008
Quality Management System

Keysight Channel Partners

www.keysight.com/find/channelpartners

Get the best of both worlds: Keysight's measurement expertise and product breadth, combined with channel partner convenience.

www.keysight.com/find/logic

For more information on Keysight Technologies' products, applications or services, please contact your local Keysight office. The complete list is available at: www.keysight.com/find/contactus

Americas

Canada	(877) 894 4414
Brazil	55 11 3351 7010
Mexico	001 800 254 2440
United States	(800) 829 4444

Asia Pacific

Australia	1 800 629 485
China	800 810 0189
Hong Kong	800 938 693
India	1 800 112 929
Japan	0120 (421) 345
Korea	080 769 0800
Malaysia	1 800 888 848
Singapore	1 800 375 8100
Taiwan	0800 047 866
Other AP Countries	(65) 6375 8100

Europe & Middle East

Austria	0800 001122
Belgium	0800 58580
Finland	0800 523252
France	0805 980333
Germany	0800 6270999
Ireland	1800 832700
Israel	1 809 343051
Italy	800 599100
Luxembourg	+32 800 58580
Netherlands	0800 0233200
Russia	8800 5009286
Spain	0800 000154
Sweden	0200 882255
Switzerland	0800 805353
	Opt. 1 (DE)
	Opt. 2 (FR)
	Opt. 3 (IT)
United Kingdom	0800 0260637

For other unlisted countries:
www.keysight.com/find/contactus
(BP-07-10-14)