



---

## Firmware Update

### Required Equipment

- E5070A or E5071A (with keyboard and mouse).
- Four blank floppy disks (DOS format).

### How to make E5070A/E5071A Firmware Installation Disk

The following is the procedure to make the E5070A/E5071A Firmware Installation Disk.

**Step 1.** Copy the following files from Agilent Technologies web site to the four floppy disks using your computer's FDD.

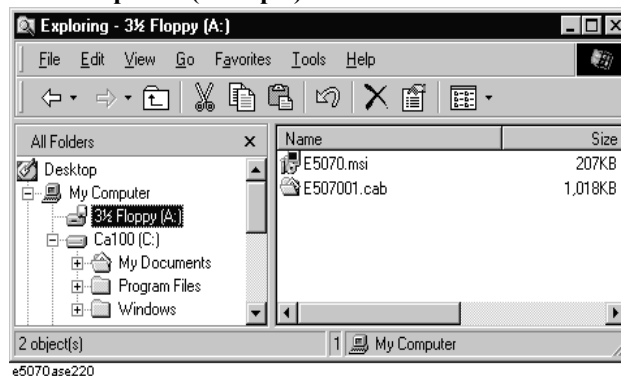
- disk1(1 of 4)-- e5070.msi, e507001.cab
- disk2(2 of 4)-- e507002.cab
- disk3(3 of 4)-- e507003.cab
- disk4(4 of 4)-- e507004.cab, SICLLAN.msi

**Step 2.** Assign the Label name as follows using the properties of your computer's Windows Explorer as shown in Figure 1.

- DISK\_1 (for disk1)
- DISK\_2 (for disk2)
- DISK\_3 (for disk3)
- DISK\_4 (for disk4)

**Figure 1**

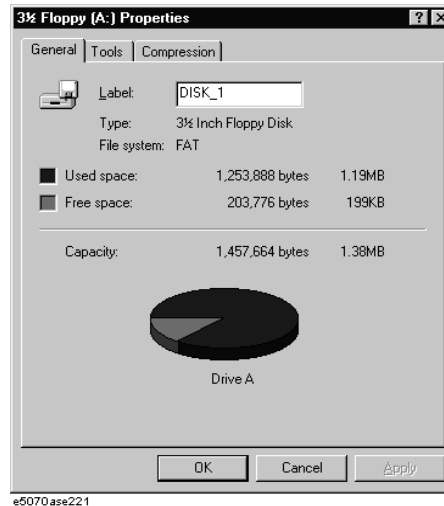
### Windows Explorer (example)



1. Insert the disk1(1 of 4) into the FDD of your computer.
2. On the Windows Explorer, click **3 1/2 Floppy [A:]** and confirm the files.
3. Right click on **3 1/2 Floppy [A:]**, then click **Properties**. The Properties dialog box appears.

4. Enter the Label name in the Label box of properties dialog box (General) for the disk1 as shown in Figure 2, and press the **OK** button.

**Figure 2** Properties Dialog Box (example)



5. Perform 1 through 4 for each disk.

---

**NOTE**

---

If the label name is not assigned, the firmware update for the E5070A/E5071A will not be done correctly.

### How to update the E5070A/E5071A firmware

It is possible to update the E5070A/E5071A firmware, but not the following software by this procedure.

- OS (Operating System)
- VBA (Visual Basic for Application)
- Calibration Constant Data

The following is the procedure to update the E5070A/E5071A firmware.

- Step 1.** Prepare the E5070A/E5071A firmware installation disks (four disks).
- Step 2.** Connect the mouse and the keyboard to the E5070A/E5071A rear panel. Then turn the E5070A/E5071A on.
- Step 3.** Exit from the E5070A/E5071A Measurement Display.
  1. Press **System** key.
  2. Press **Service Menu - Restart Menu** on the menu bar, and the Password dialog box will appear.
  3. Enter the password **e507xa** into the Password box.
  4. Press **Restart as Service** on the menu bar, and the instrument will be restarted.
- Step 4.** Double-click the “**My Computer**” icon on the Windows desktop.

**Step 5.** Insert the E5070A/E5071A firmware installation disk1 (1 of 4) into the FDD of the E5070A/E5071A.

**Step 6.** Double-Click the “3 1/2 Floppy [A:]” icon.

**Step 7.** Remove the old version of the firmware using the following procedure.

1. Double-Click “**E5070.msi**” icon. The E5070A/E5071A Setup Wizard(uninstall) will start automatically as shown in Figure 3.
2. Click on the **Remove** E5070A/E5071A option button on the E5070A/E5071A Setup Wizard as shown in Figure 3, then click on the **Finish** button.

**Figure 3**

**E5070A/E5071A Setup Wizard (uninstall)**

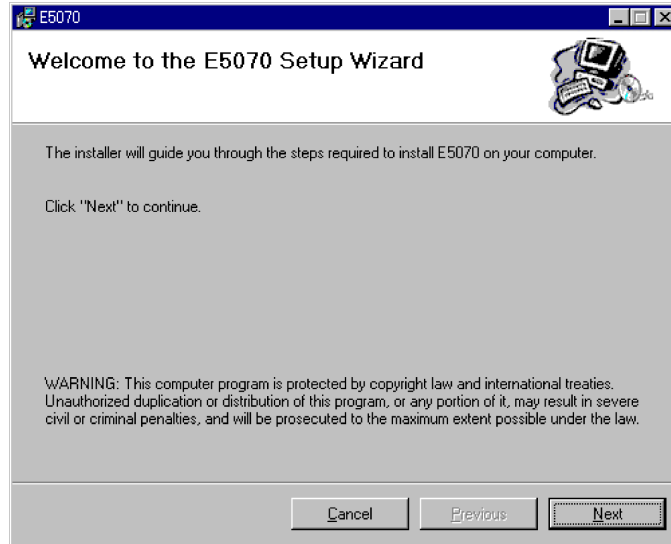


**Step 8.** Install the new version of the firmware using the following procedure.

1. Double-Click “**E5070.msi**” icon. The E5070A/E5071A Setup Wizard will start automatically as shown in Figure 4.
2. Click on the **Next** to continue the firmware installation on the E5070A/E5071A Setup Wizard as shown in Figure 4.
3. After the disk1 installation is finished, insert the firmware installation disk2 (2 of 4) into the FDD of the E5070A/E5071A, then click **OK**.
4. After the disk2 installation is finished, insert the firmware installation disk3 (3 of 4) into the FDD of the E5070A/E5071A, then click **OK**
5. After the disk3 installation is finished, insert the firmware installation disk4 (4 of 4) into the FDD of the E5070A/E5071A, then click **OK**

Figure 4

### E5070A/E5071A Setup Wizard



**Step 9.** Install the E5070 SICL-LAN components.

---

**NOTE**

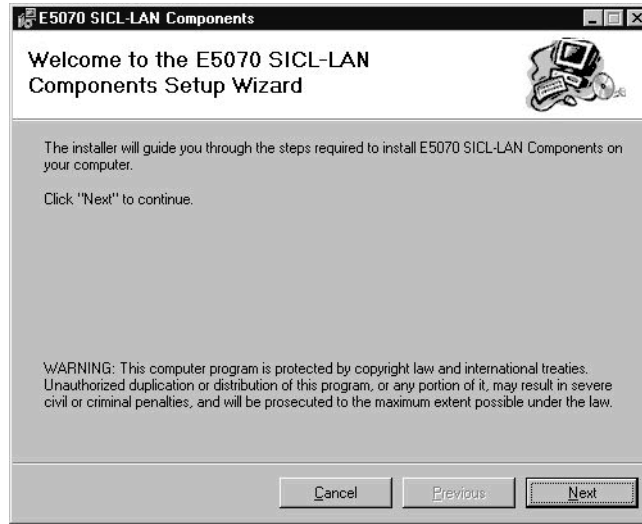
The LAN (Local Area Network) remote control system provides two methods, controlling the E5070A/E5071A using the SICL-LAN server and controlling the E5070A/E5071A using the telnet server. If you use the SICL-LAN server, the E5070 SICL-LAN components must be installed into the E5070A/E5071A in advance.

This installation is not required if the E5070 SICL-LAN components have already been installed into the E5070A/E5071A.

- 
1. Insert the firmware installation disk4 (4 of4) into the FDD of the E5070A/E5071A.
  2. Double-Click the “**My Computer**” icon on the Windows desktop, then double-click the “**3 1/2 Floppy [A:]**” icon.
  3. Double-Click “**Sicllan.msi**” icon. The E5070 SICL-LAN Components Setup Wizard will start automatically as shown in Figure 5.

Figure 5

### E5070A/E5071A SICL-LAN Components Setup Wizard



4. Click on the **Next**.

**Step 10.** Double-click “**Restart as instr**” icon on the Windows desktop, and the instrument will be restarted and the measurement screen will appear.

**Step 11.** Press **System** - **Firmware Revision**. Confirm the firmware revision you have just installed.