

SerialBERT SW Installation - Introduction

This document describes the Software Upgrade for the SerialBERT 13.5Gbps N4901A, 13.5Gbps N4901B, 7Gbps N4902A and 7Gbps N4902B.

The Software Upgrade Process consists of three major steps:

1. Removal of the old SerialBERT Software
2. Installation of the Firmware Server Software
3. Installation of the Graphical User Software

Prerequisites:

- access to LAN on any PC
- an USB Jump Drive (at least 64MB) for the transfer of the SW bits to the SerialBERT HDD.



SerialBERT SW Installation – SW Download

The Software Upgrade is free of charge and available as download from the Internet. Please download the Software for

- the **Firmware** ([SerialBertFirmwareSetupRev_xx.msi](#)) and
- the **Graphical User Interface** ([SerialBertGUISetupRev_xx.msi](#))

from the Internet page, which you will find at:

www.agilent.com/find/SerialBERT

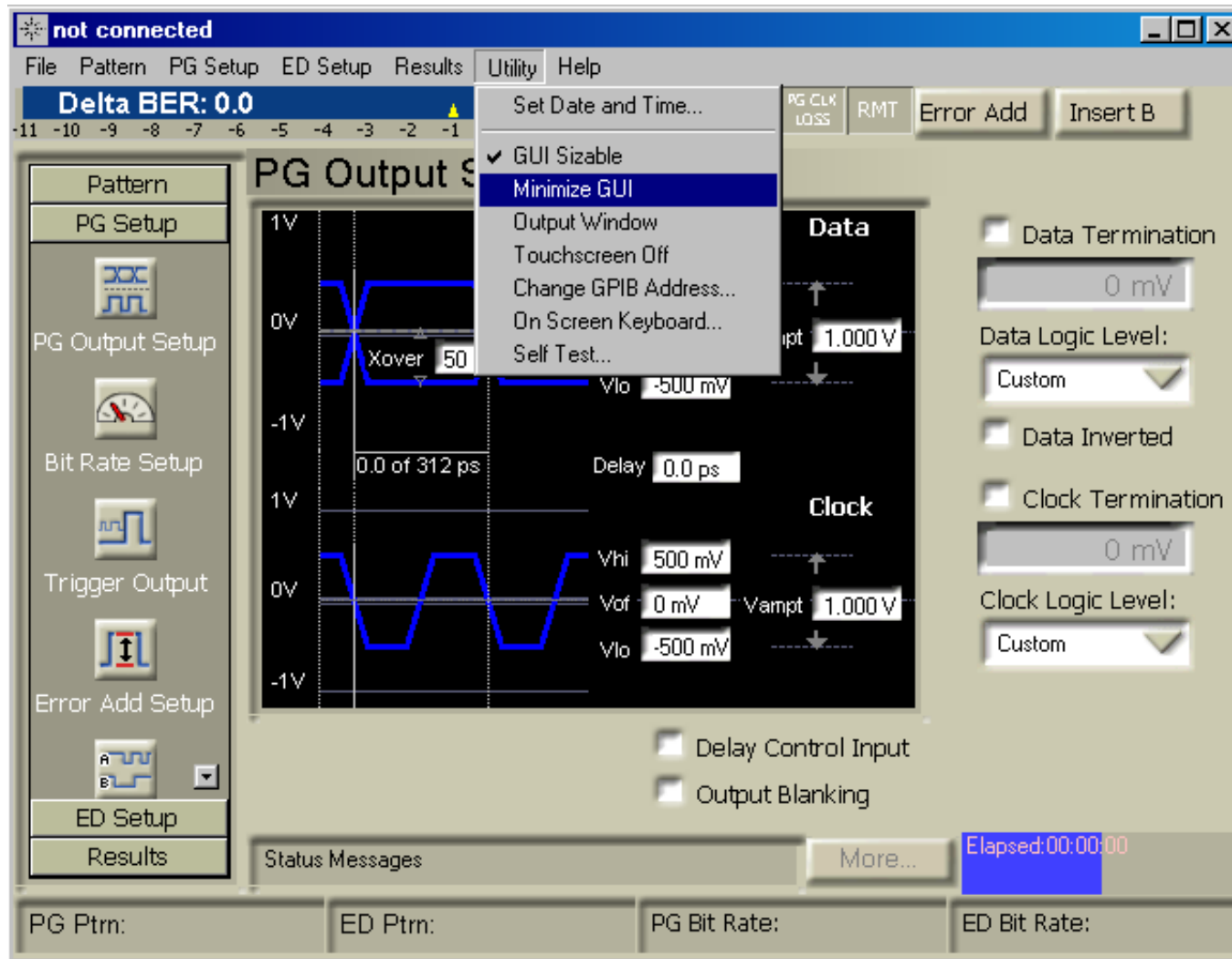
At the bottom of this page you will find the Link for the [Software and Drivers](#).

- The download can be done from the Internet Explorer of any PC, connected to the LAN. It is not recommended to connect the SerialBERT directly to the LAN without further VIRUS-protection SW and newest XP patches (not delivered with the SerialBERT).
- The SW can be transferred by using a Jump Drive (USB Memory Stick, at least 64MB).
- Plug-in the Jump Drive into the USB Port on the Rear-Panel of the SerialBERT.
- Store the downloaded files into the folder c:\installation
- Power on the SerialBERT.

In the following is explained, how you can switch from the Graphical User Interface to the Windows Desktop.



SerialBERT SW Installation – Minimize GUI



After power on the SerialBERT, the Startmenu of the Graphical User Interface appears.

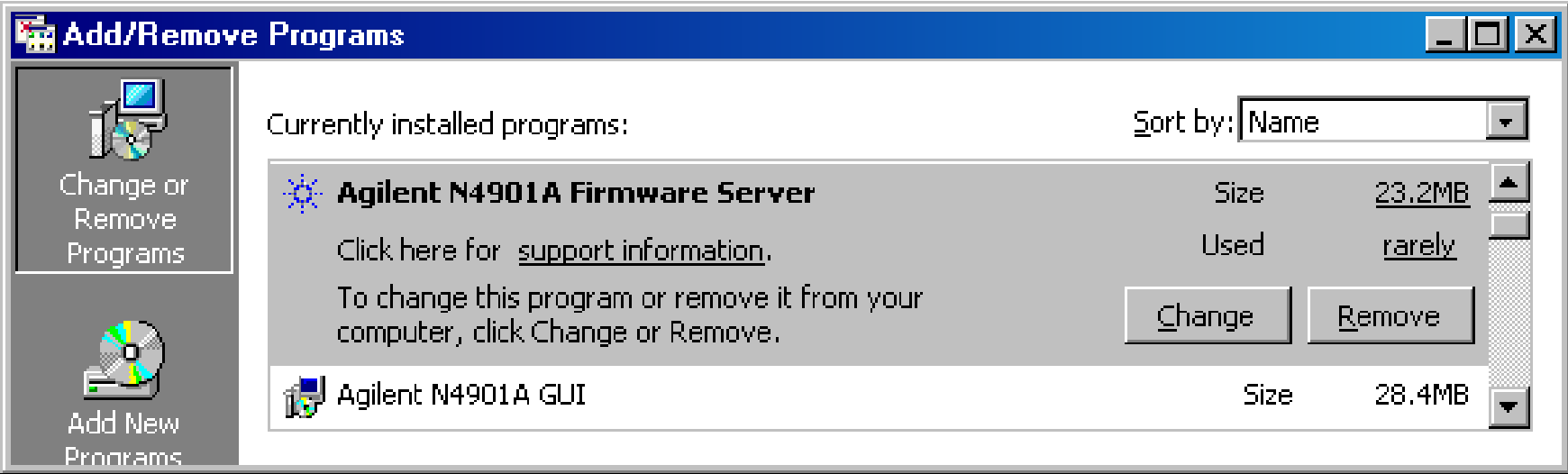
Minimize the GUI by the menu option:
[Utilities → Minimize GUI](#)



SerialBERT SW Installation – Removal of old SW

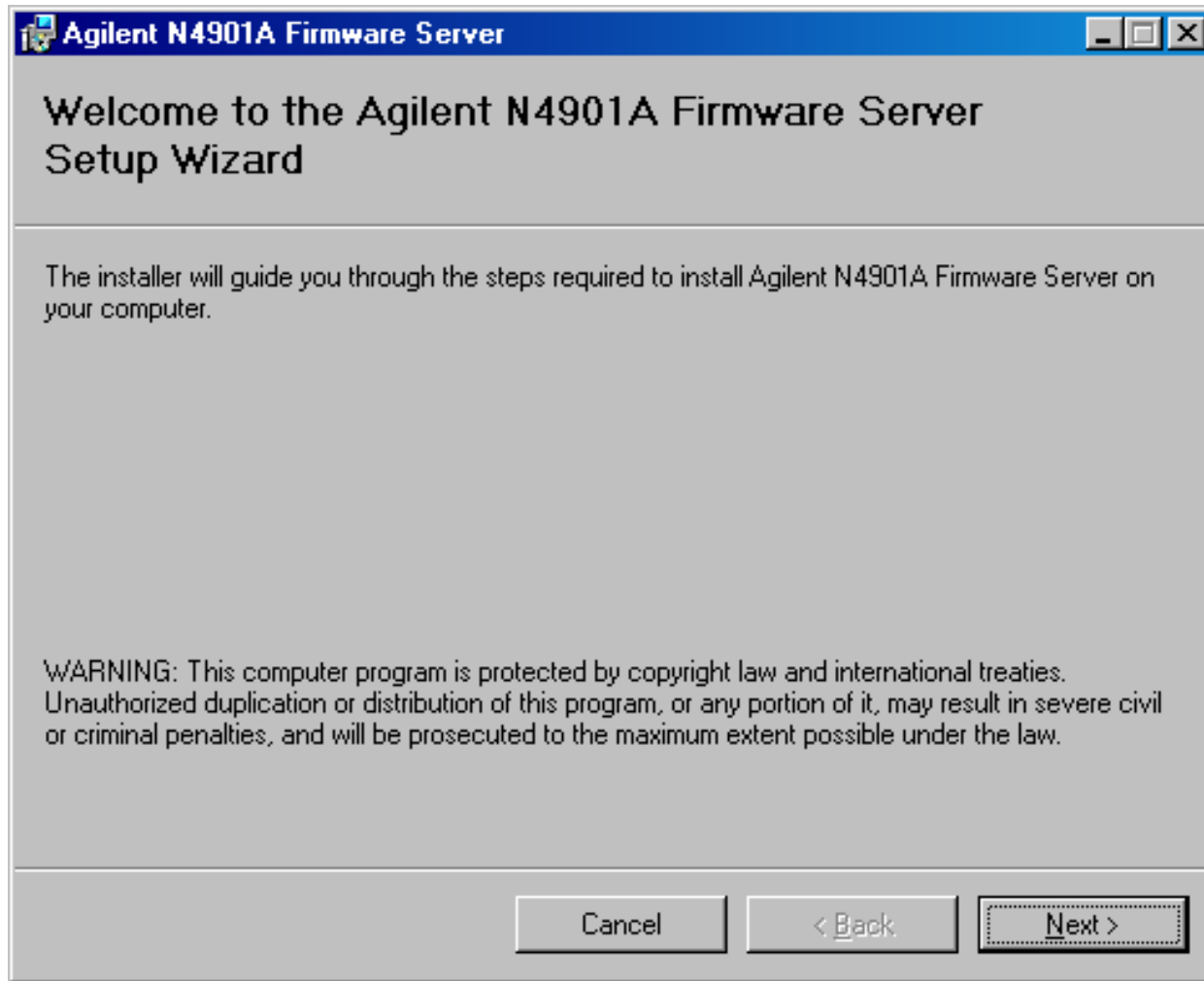
Before you can start the installation, the current Software for the SerialBERT needs to be removed.

Start the Settings → Control Panel → Add and Remove Programs Procedure and remove the **Agilent N4901A Firmware Server** and **Agilent N4901A GUI**.

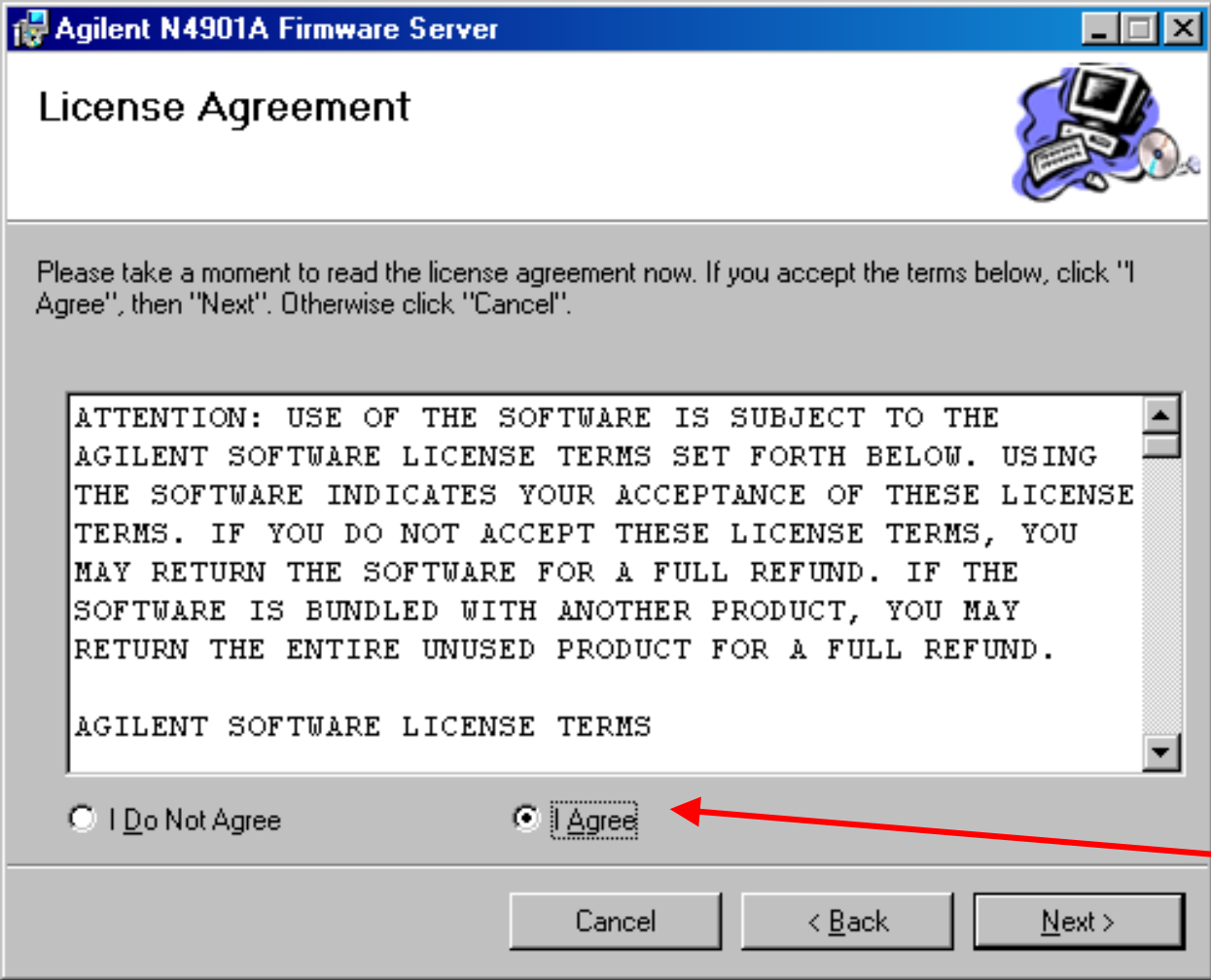


SerialBERT SW Installation - Firmware

Start the installation file: [SerialBertFirmwareSetupRev_xx.msi](#) in the folder: c:\installation.



SerialBERT SW Installation - Firmware

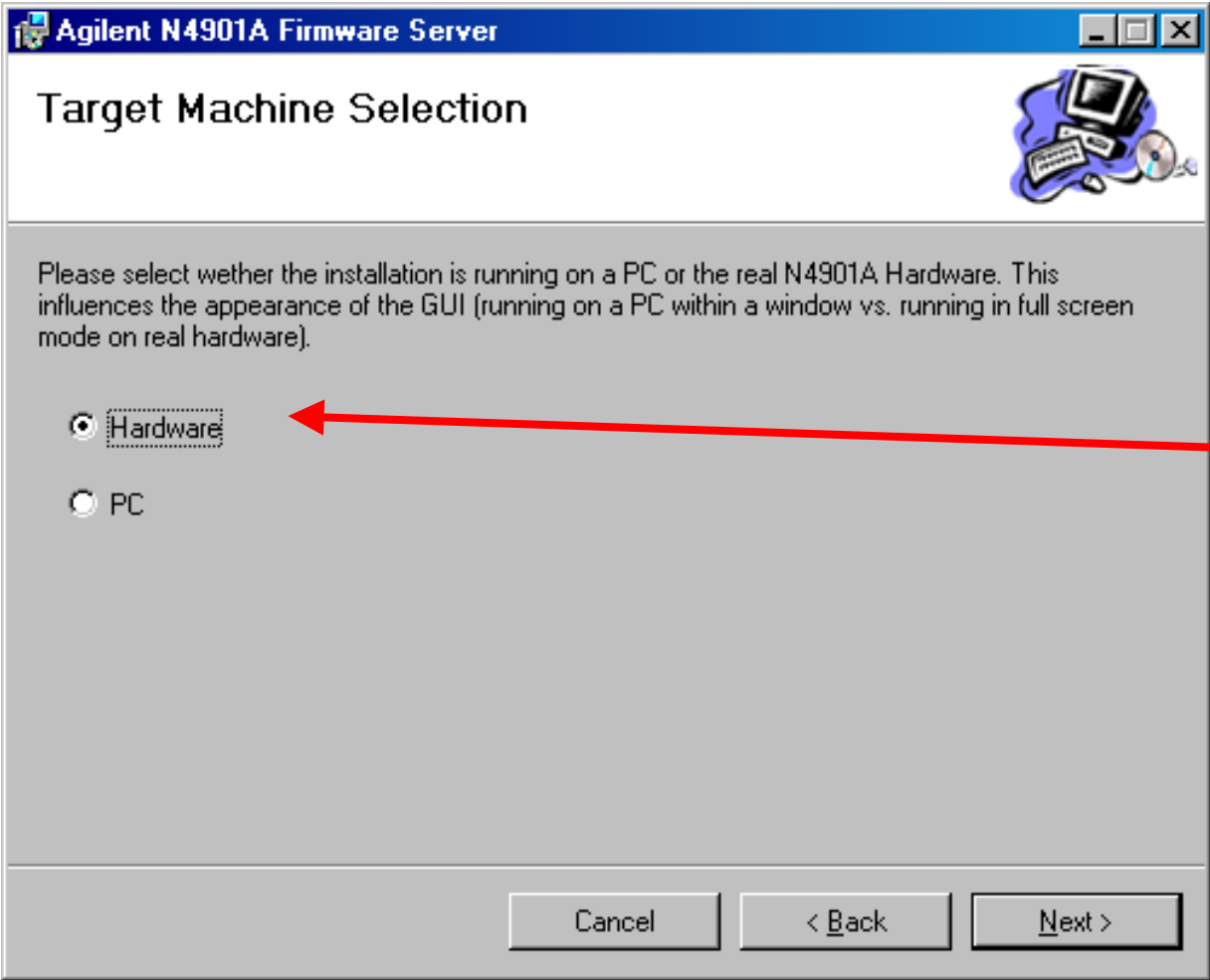


Read the License Agreement.

If you agree, then select this option and continue with Next.



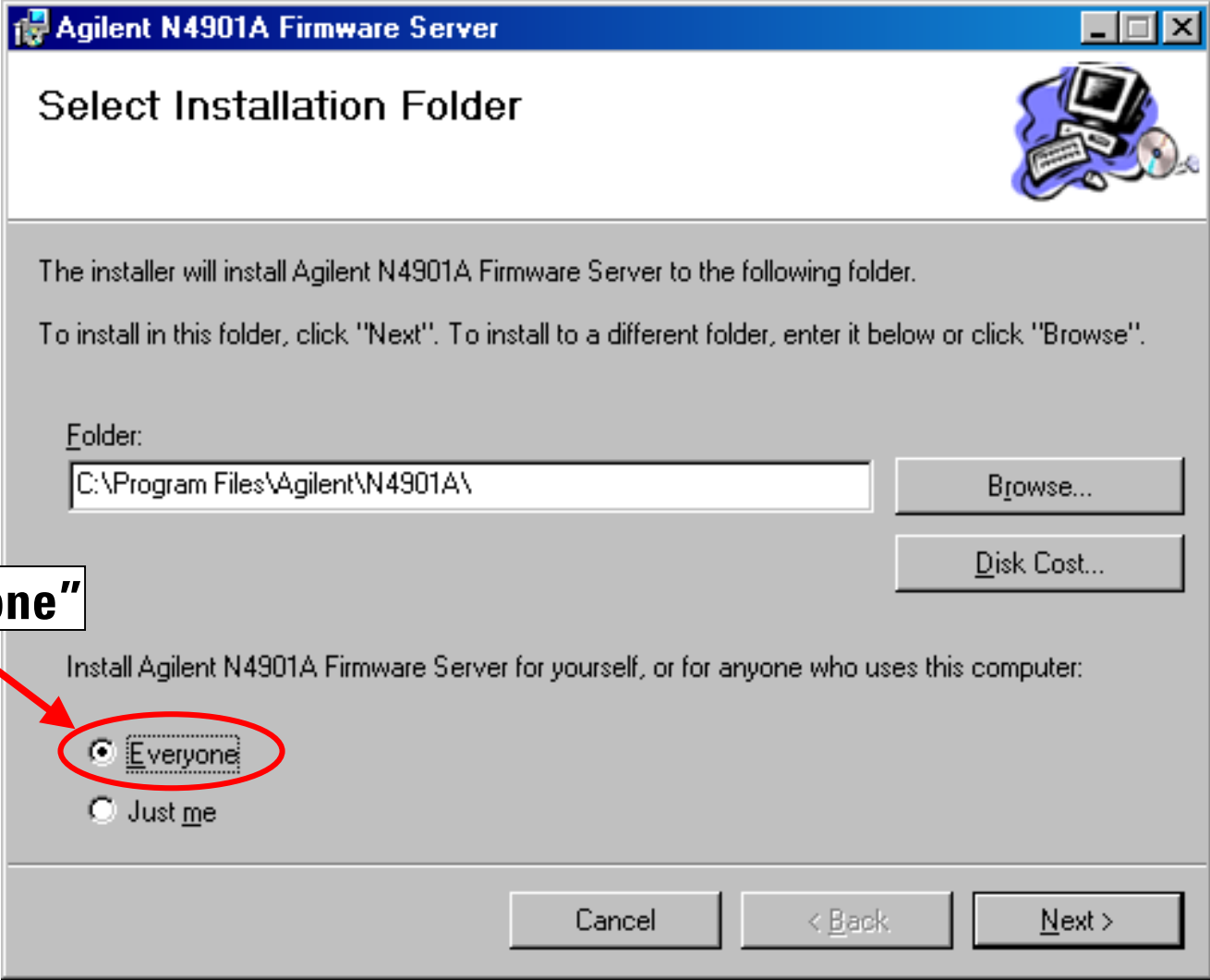
SerialBERT SW Installation - Firmware



On the SerialBERT, select Hardware.



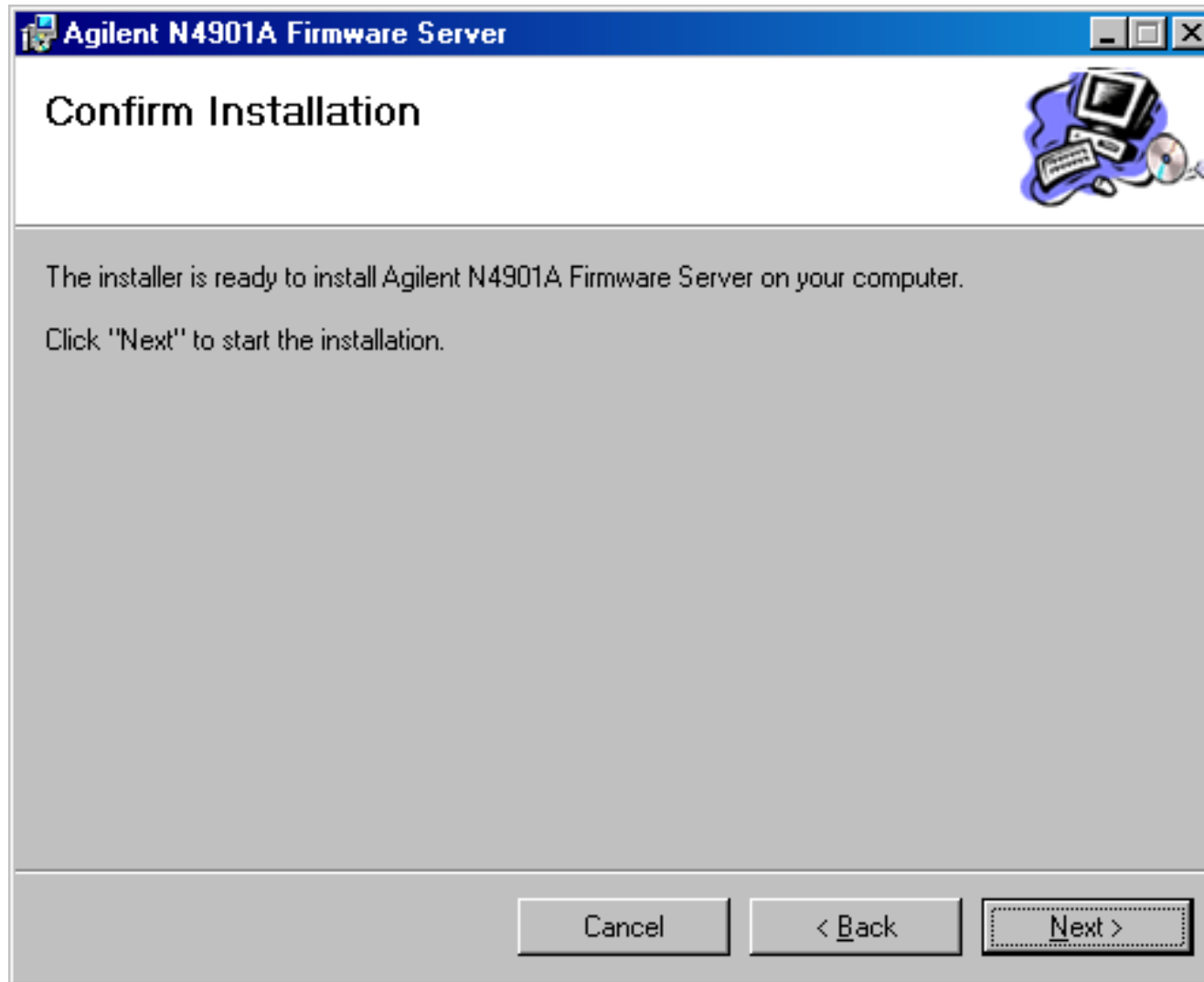
SerialBERT SW Installation - Firmware



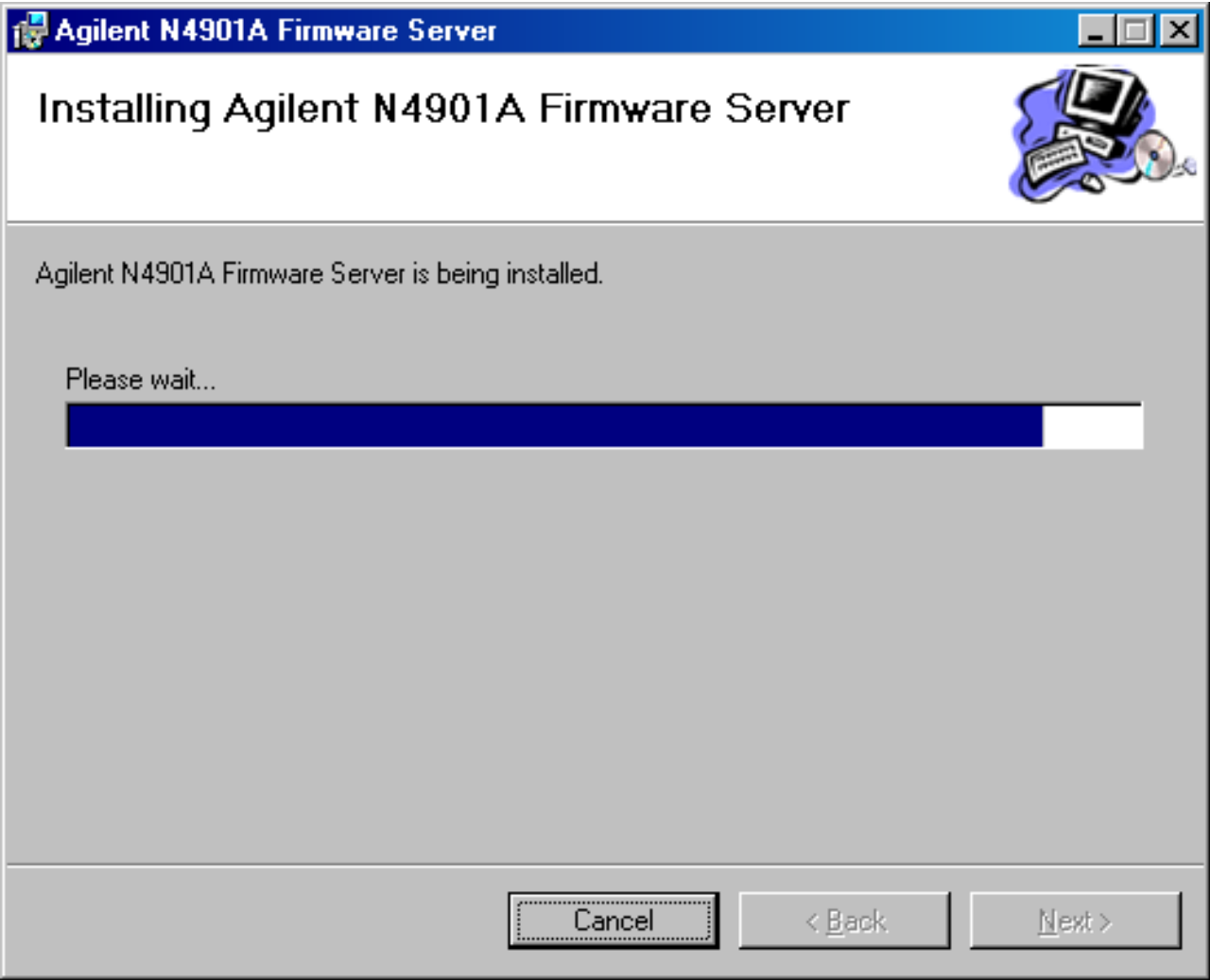
Select always "Everyone"



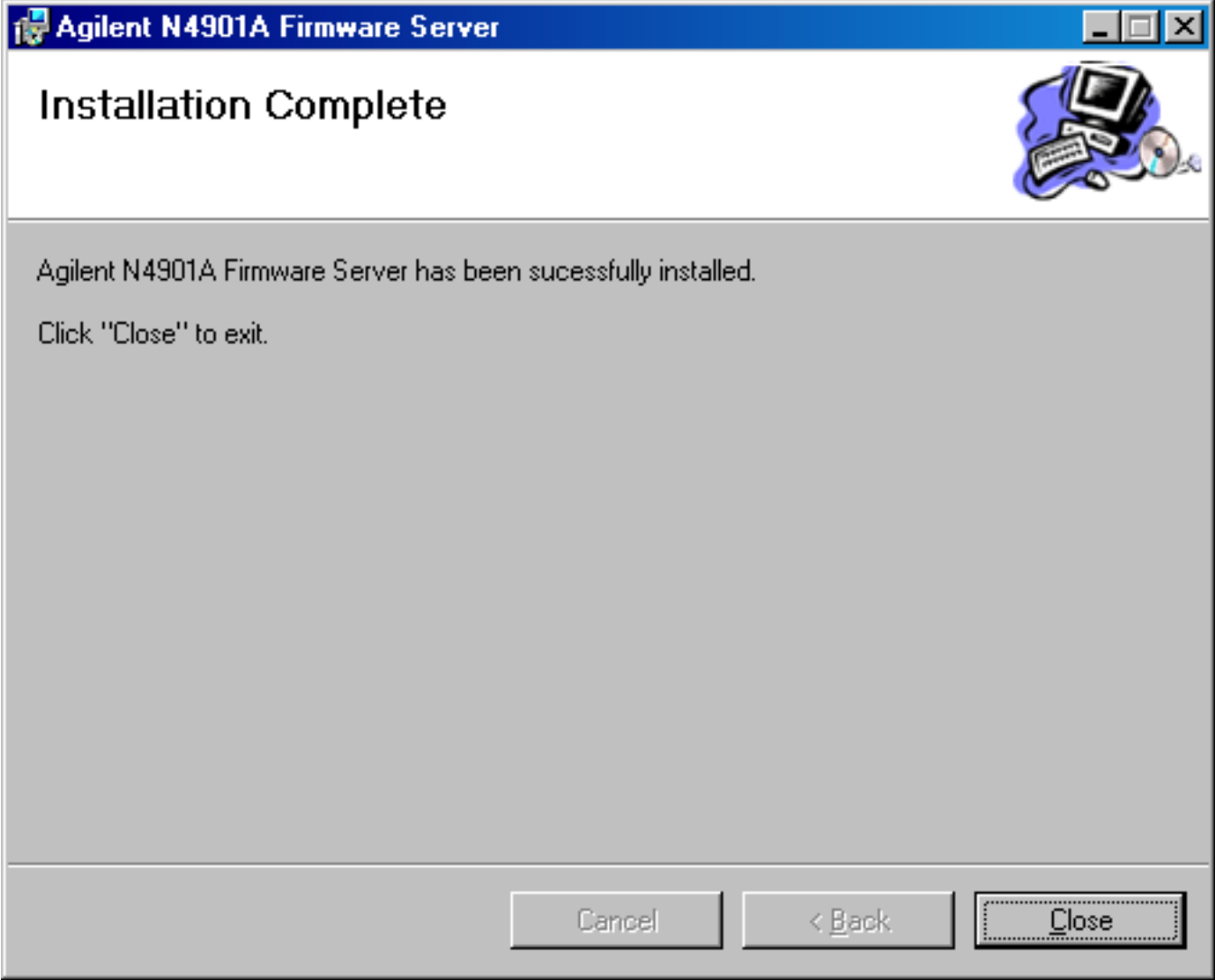
SerialBERT SW Installation - Firmware



SerialBERT SW Installation - Firmware

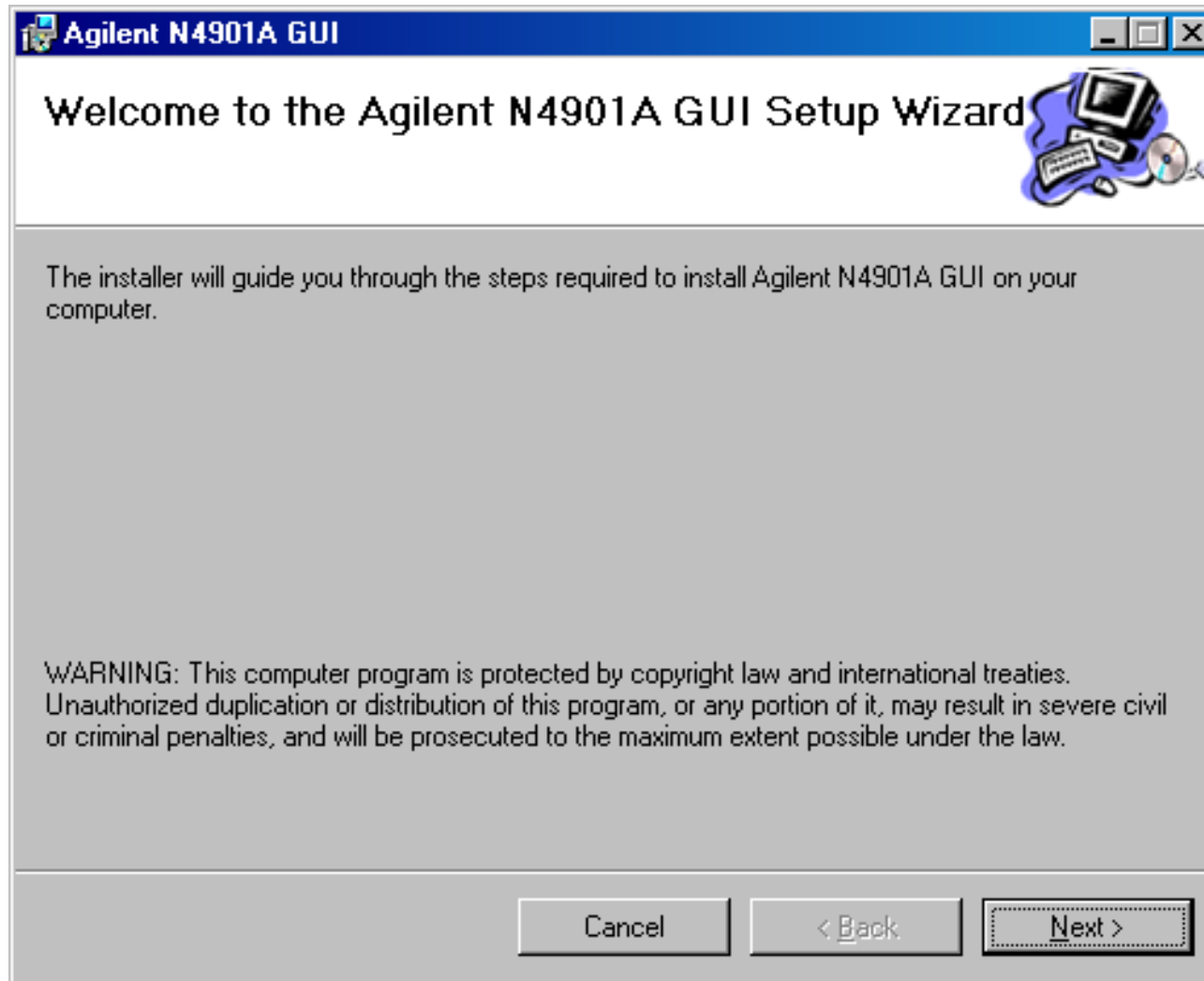


SerialBERT SW Installation - Firmware

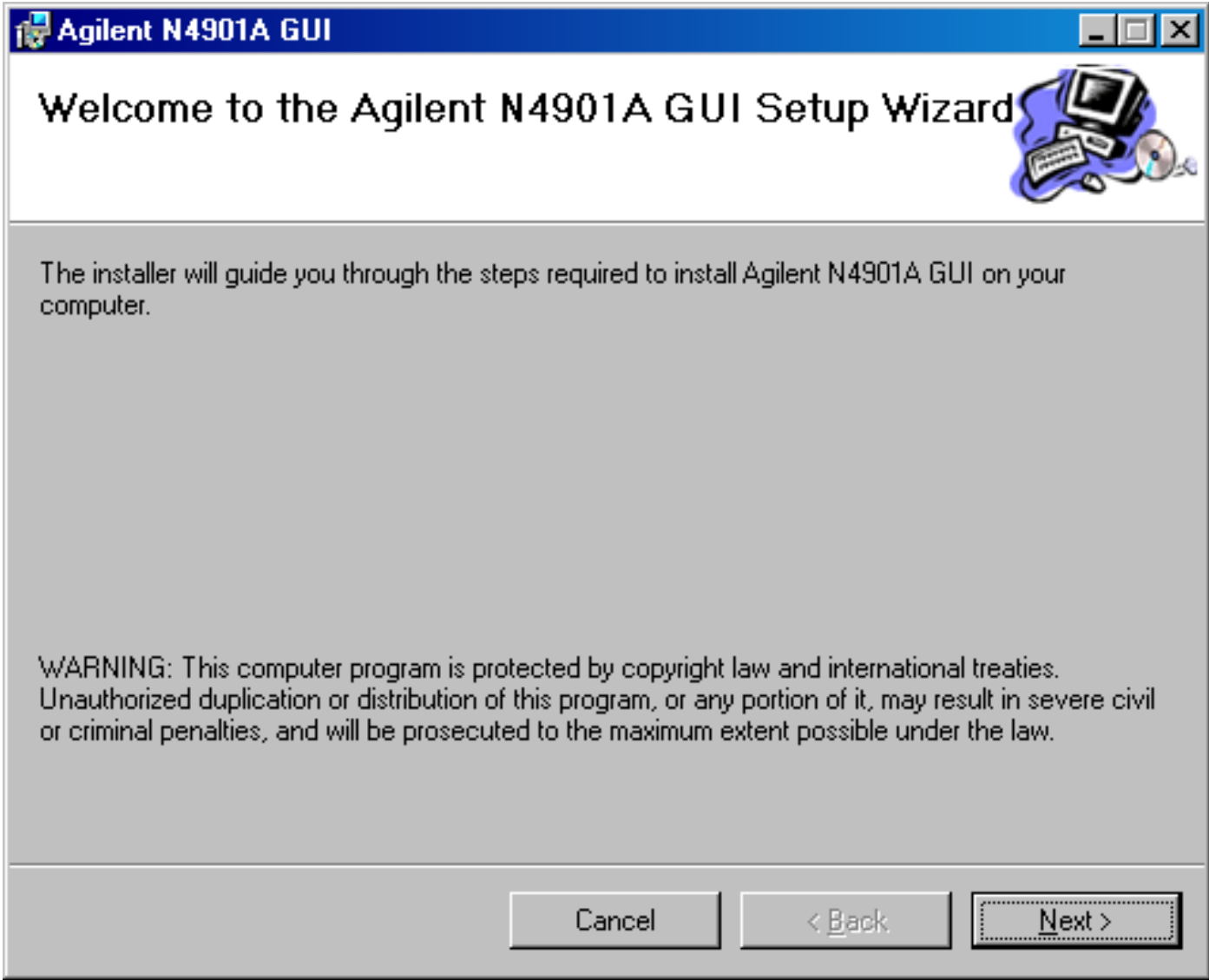


SerialBERT SW Installation – GUI

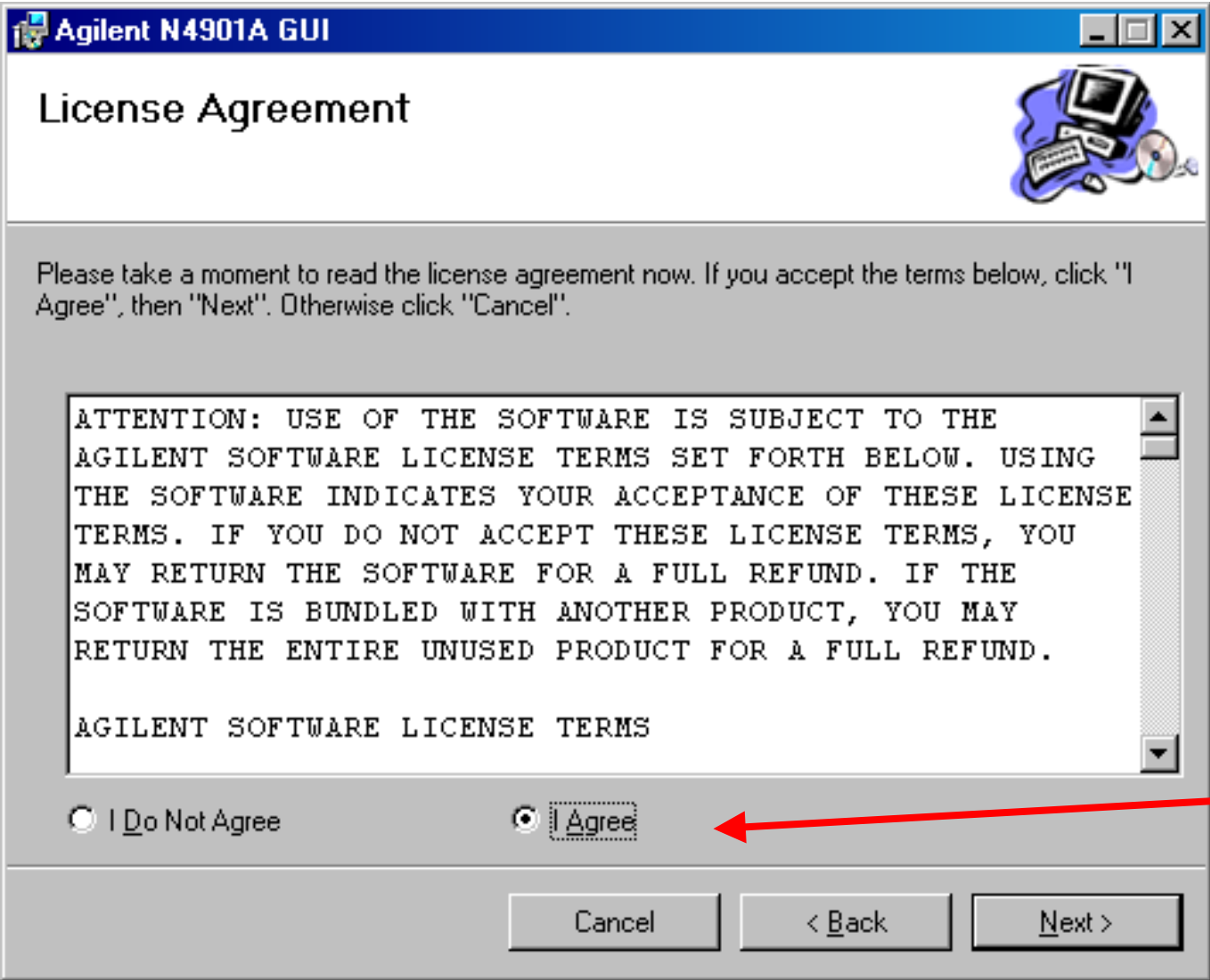
Start the Installation file: [SerialBertGUISetupRev_xx.msi](#) in the folder: c:\installation.



SerialBERT SW Installation - GUI



SerialBERT SW Installation - GUI

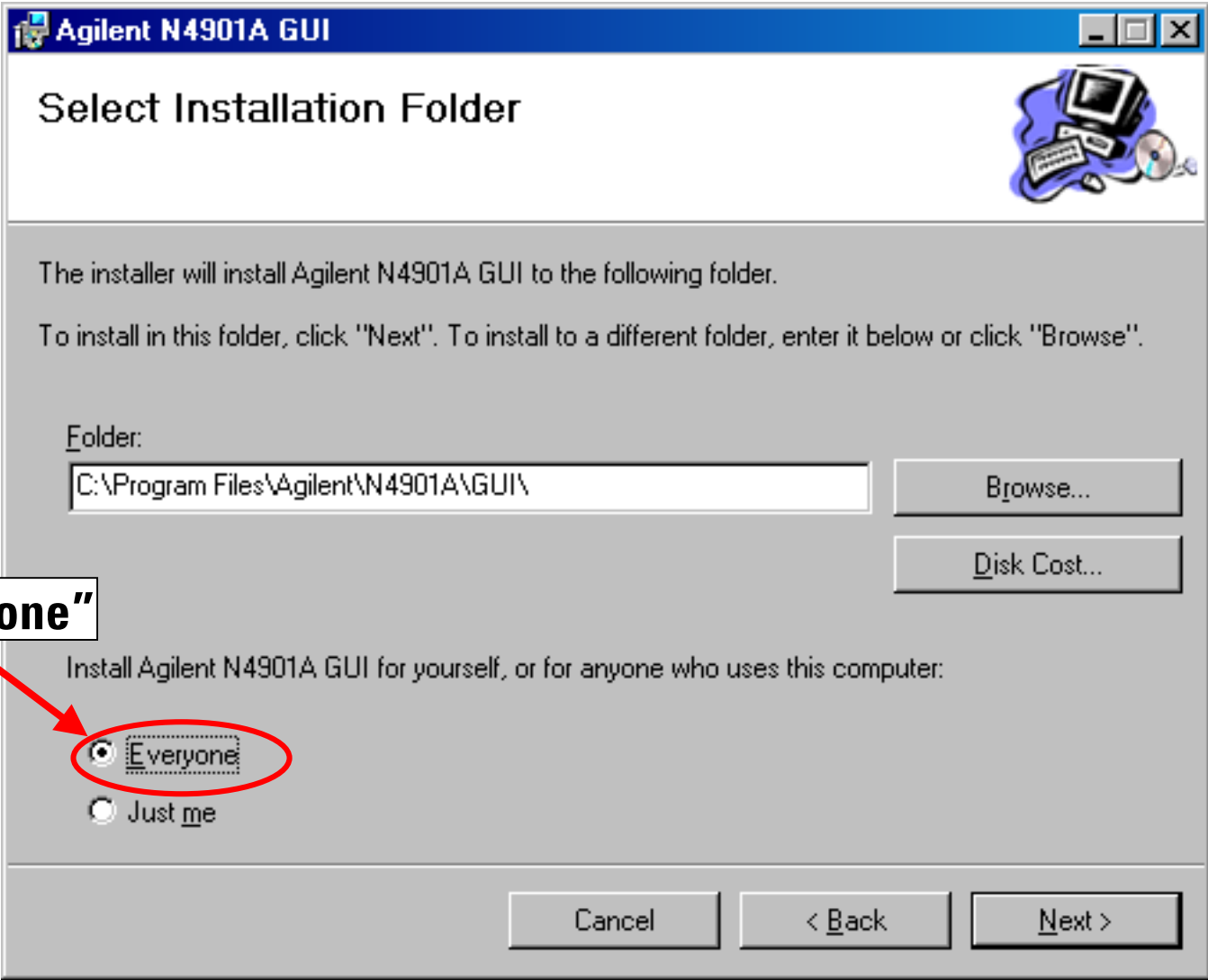


Read the License Agreement.

If you agree, then select this option and continue with Next.



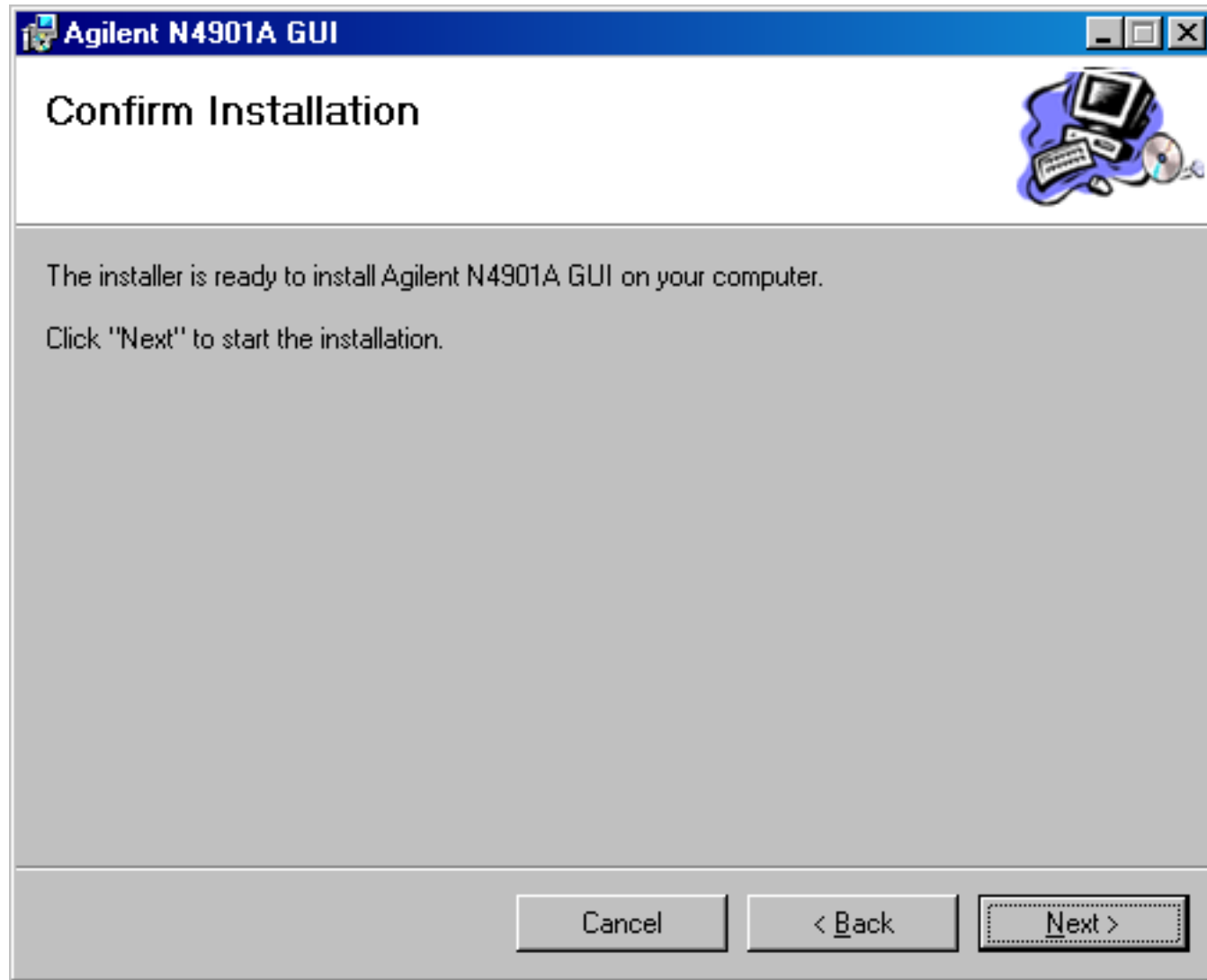
SerialBERT SW Installation - GUI



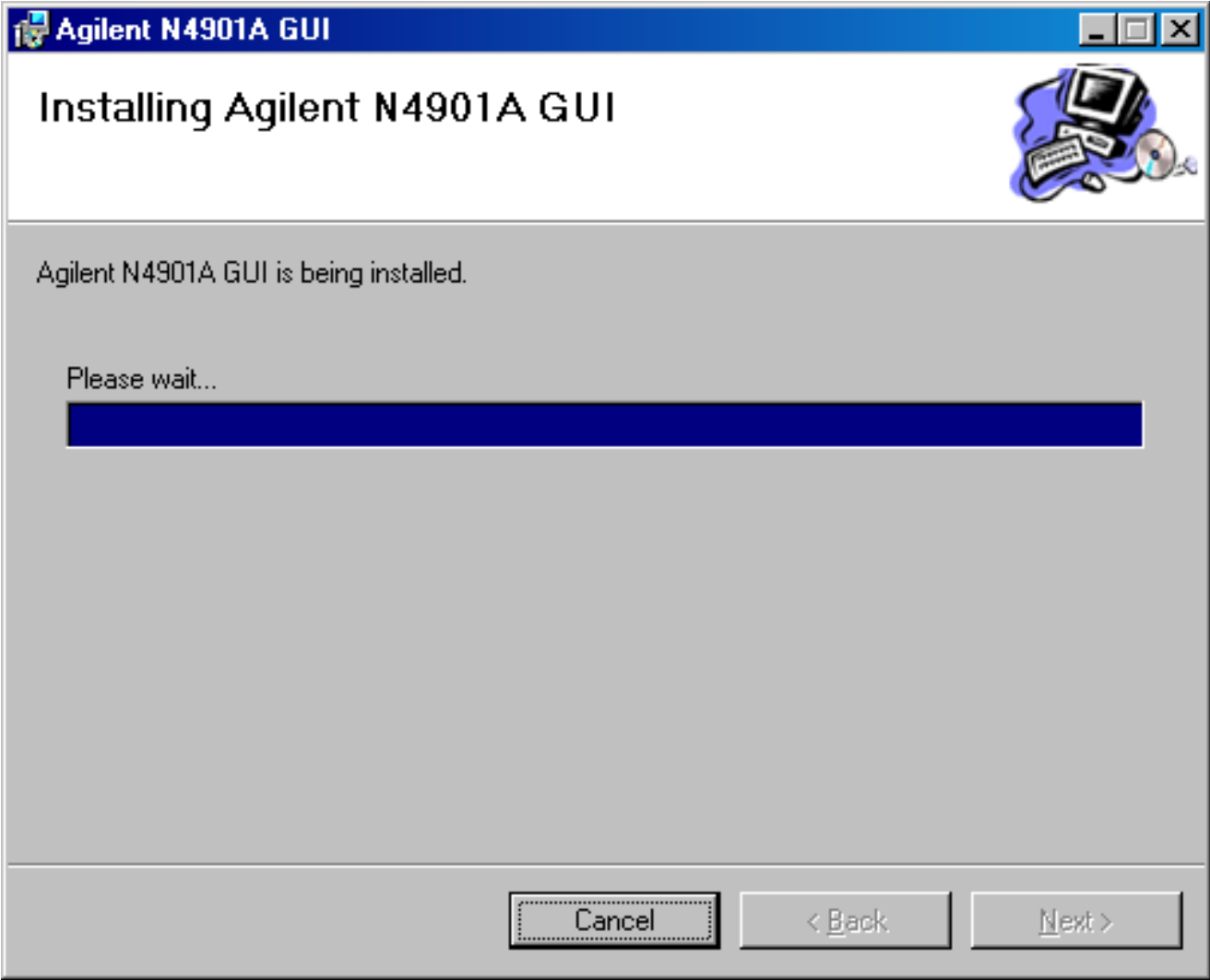
Select always "Everyone"



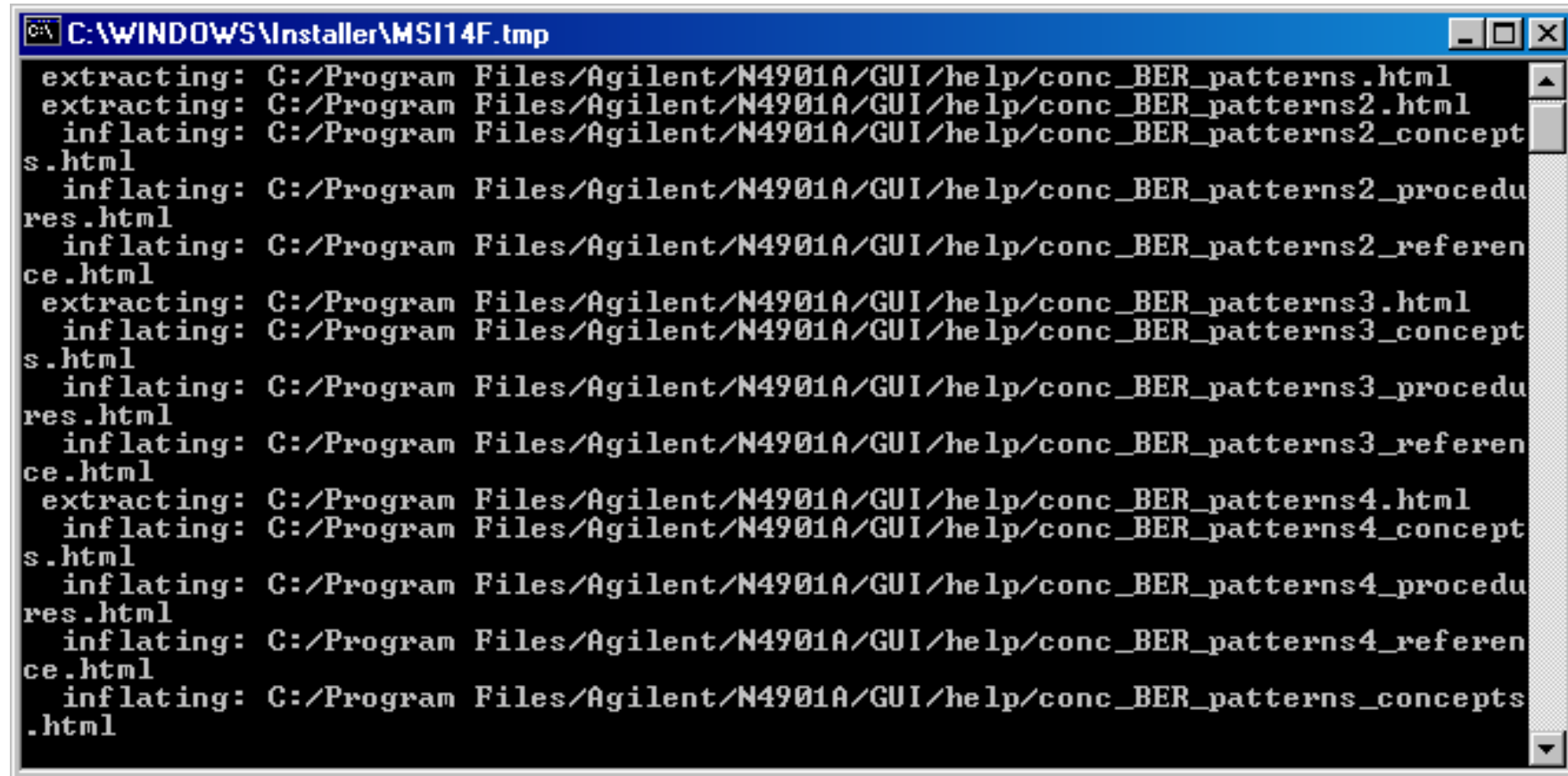
SerialBERT SW Installation - GUI



SerialBERT SW Installation - GUI



SerialBERT SW Installation - GUI

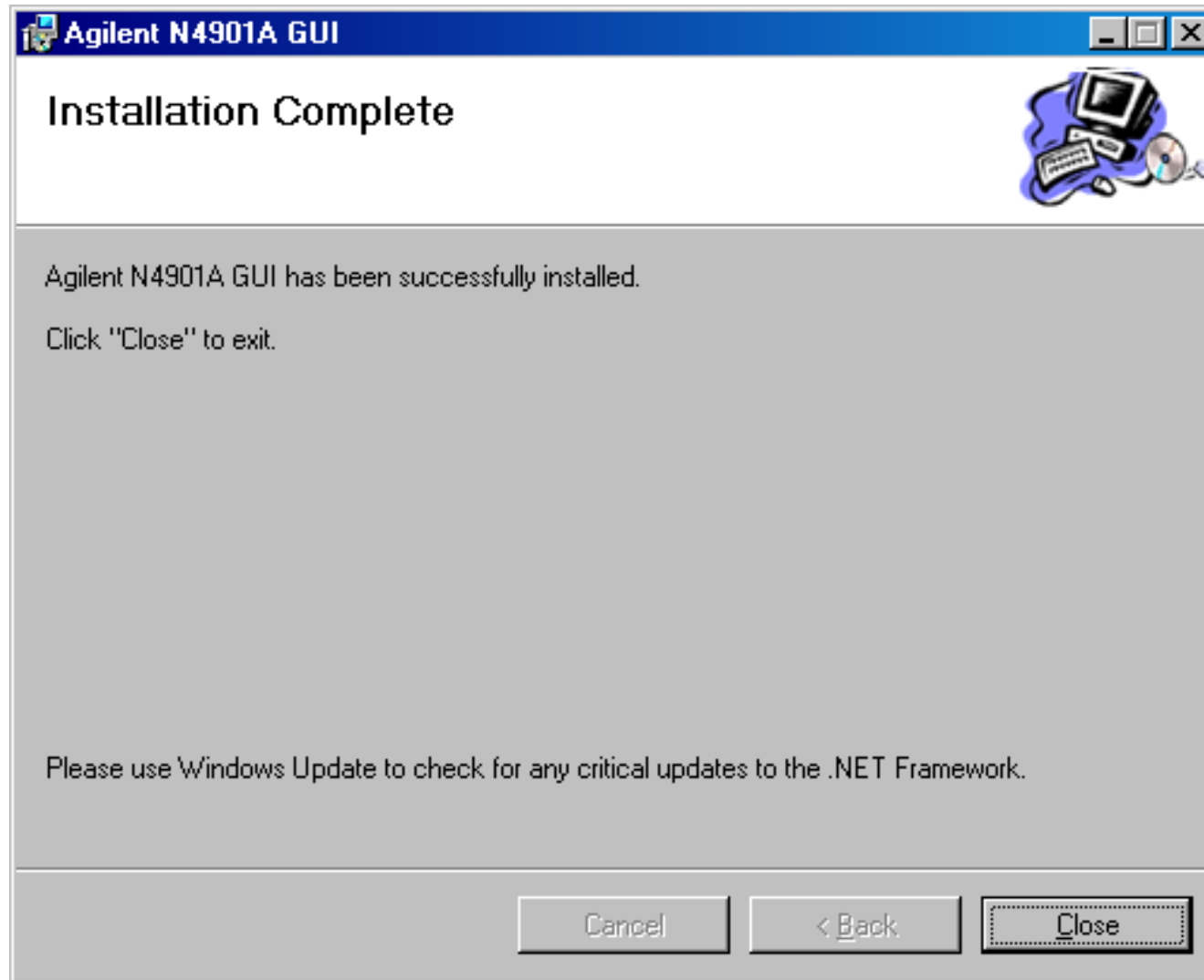


```
C:\WINDOWS\Installer\MSI14F.tmp
extracting: C:/Program Files/Agilent/N4901A/GUI/help/conc_BER_patterns.html
extracting: C:/Program Files/Agilent/N4901A/GUI/help/conc_BER_patterns2.html
  inflating: C:/Program Files/Agilent/N4901A/GUI/help/conc_BER_patterns2_concept
s.html
  inflating: C:/Program Files/Agilent/N4901A/GUI/help/conc_BER_patterns2_procedu
res.html
  inflating: C:/Program Files/Agilent/N4901A/GUI/help/conc_BER_patterns2_referen
ce.html
extracting: C:/Program Files/Agilent/N4901A/GUI/help/conc_BER_patterns3.html
  inflating: C:/Program Files/Agilent/N4901A/GUI/help/conc_BER_patterns3_concept
s.html
  inflating: C:/Program Files/Agilent/N4901A/GUI/help/conc_BER_patterns3_procedu
res.html
  inflating: C:/Program Files/Agilent/N4901A/GUI/help/conc_BER_patterns3_referen
ce.html
extracting: C:/Program Files/Agilent/N4901A/GUI/help/conc_BER_patterns4.html
  inflating: C:/Program Files/Agilent/N4901A/GUI/help/conc_BER_patterns4_concept
s.html
  inflating: C:/Program Files/Agilent/N4901A/GUI/help/conc_BER_patterns4_procedu
res.html
  inflating: C:/Program Files/Agilent/N4901A/GUI/help/conc_BER_patterns4_referen
ce.html
  inflating: C:/Program Files/Agilent/N4901A/GUI/help/conc_BER_patterns_concepts
.html
```

This windows appears during the installation. You don't need to do anything. Just wait, until it is done.



SerialBERT SW Installation - GUI



SerialBERT SW Installation – BIOS Update

A Reboot after the installation is usually not necessary. Start the Firmware by double click on its icon at the Windows desktop. The BIOS update will be started and a dialog window will inform about the progress.

WARNING

Do not power down the SerialBERT during the BIOS upgrade!

After the BIOS Upgrade start the Firmware again. The Firmware will appear as application in the Windows task bar.



SerialBERT SW – Start of Firmware & GUI

Start the Graphical User Interface by double click on its icon at the Windows desktop.



Select localhost for the Server on the local instrument SerialBERT. For installation on a PC, you need to enter the TCP/IP-Address of the SerialBERT or its host name.

