

Stimulus Remote Setup

Reference: N5411B Serial ATA (SATA) Compliance Test Software

Revision:

Revision	Date	Changes
1.0	19/3/2015	Initial version

Purpose:

This document describes the steps to setup the stimulus remotely for the N5411B SATA6G Compliance Test Software.

81134A Pulse Pattern Generator:

Please follow the following steps to setup the 81134A Pulse Pattern Generator stimulus remotely for the N5411B SATA6G Compliance Test Software.

Using IP Address:

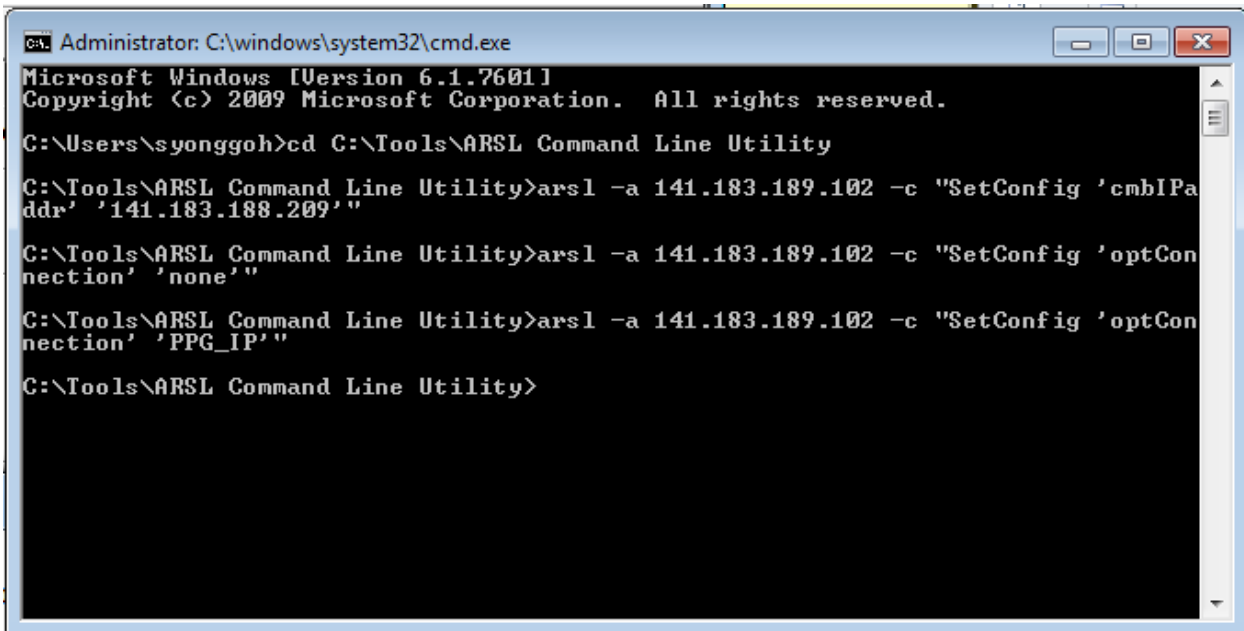
1. Set the "cmbIPAddr" configuration variable:

```
arsl -a <Oscilloscope IP Address> -c "SetConfig 'cmbIPAddr' '<81134A IP Address>'"
```

2. Set the "optConnection" configuration variable:

```
arsl -a <Oscilloscope IP Address> -c "SetConfig 'optConnection' 'none'"
```

```
arsl -a <Oscilloscope IP Address> -c "SetConfig 'optConnection' 'PPG_IP'"
```



```
Administrator: C:\windows\system32\cmd.exe
Microsoft Windows [Version 6.1.7601]
Copyright (c) 2009 Microsoft Corporation. All rights reserved.

C:\Users\syonggoh>cd C:\Tools\ARSL Command Line Utility

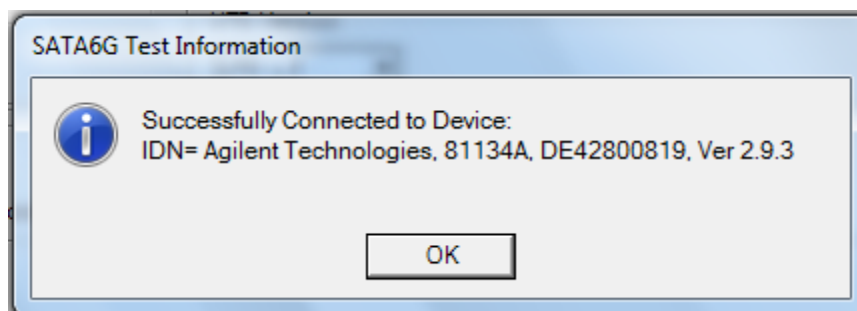
C:\Tools\ARSL Command Line Utility>arsl -a 141.183.189.102 -c "SetConfig 'cmbIPAddr' '141.183.188.209'"

C:\Tools\ARSL Command Line Utility>arsl -a 141.183.189.102 -c "SetConfig 'optConnection' 'none'"

C:\Tools\ARSL Command Line Utility>arsl -a 141.183.189.102 -c "SetConfig 'optConnection' 'PPG_IP'"

C:\Tools\ARSL Command Line Utility>
```

3. The following message box will be shown if the connection to the 81134A Pulse Pattern Generator is success:



Using SICL Address:

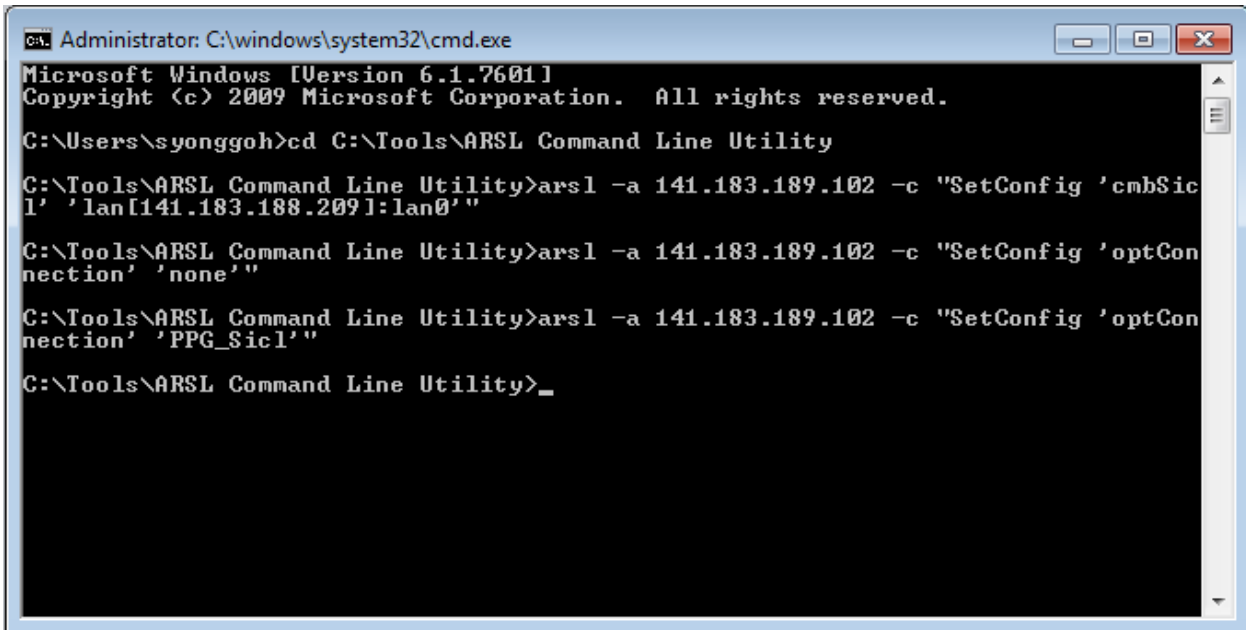
1. Set the "cmbSicl" configuration variable:

```
arsl -a <Oscilloscope IP Address> -c "SetConfig 'cmbSicl' '<81134A Sicl Address>'"
```

2. Set the "optConnection" configuration variable:

```
arsl -a <Oscilloscope IP Address> -c "SetConfig 'optConnection' 'none'"
```

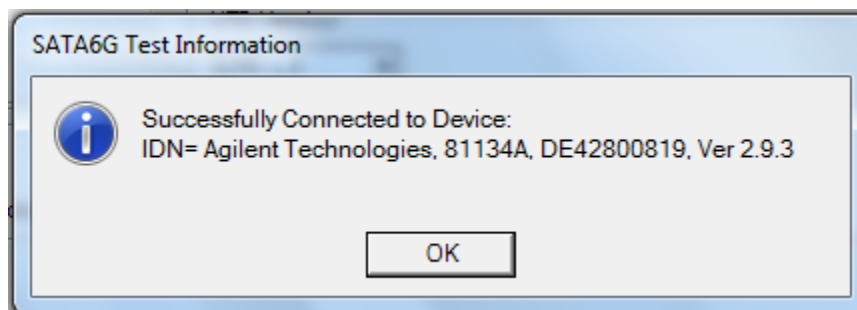
```
arsl -a <Oscilloscope IP Address> -c "SetConfig 'optConnection' 'PPG_Sicl'"
```



```
Administrator: C:\windows\system32\cmd.exe
Microsoft Windows [Version 6.1.7601]
Copyright (c) 2009 Microsoft Corporation. All rights reserved.

C:\Users\syonggoh>cd C:\Tools\ARSL Command Line Utility
C:\Tools\ARSL Command Line Utility>arsl -a 141.183.189.102 -c "SetConfig 'cmbSicl' 'lan[141.183.188.209]:lan0'"
C:\Tools\ARSL Command Line Utility>arsl -a 141.183.189.102 -c "SetConfig 'optConnection' 'none'"
C:\Tools\ARSL Command Line Utility>arsl -a 141.183.189.102 -c "SetConfig 'optConnection' 'PPG_Sicl'"
C:\Tools\ARSL Command Line Utility>_
```

3. The following message box will be shown if the connection to the 81134A Pulse Pattern Generator is success:



User can optionally suppress the message box by set the

NOTE “SuppressSimpleMessages” to “True” before set up the remote connection:

```
arsl -a <Oscilloscope IP Address> -c “SuppressSimpleMessages True”
```

NOTE Recommended to reset the “optConnection” to “none” every time before setup the connection to the stimulus.

N4903B High Performance Serial BERT (J-BERT):

Please follow the following steps to setup the N4903B High Performance Serial BERT (J-BERT) stimulus remotely for the N5411B SATA6G Compliance Test Software.

Using IP Address:

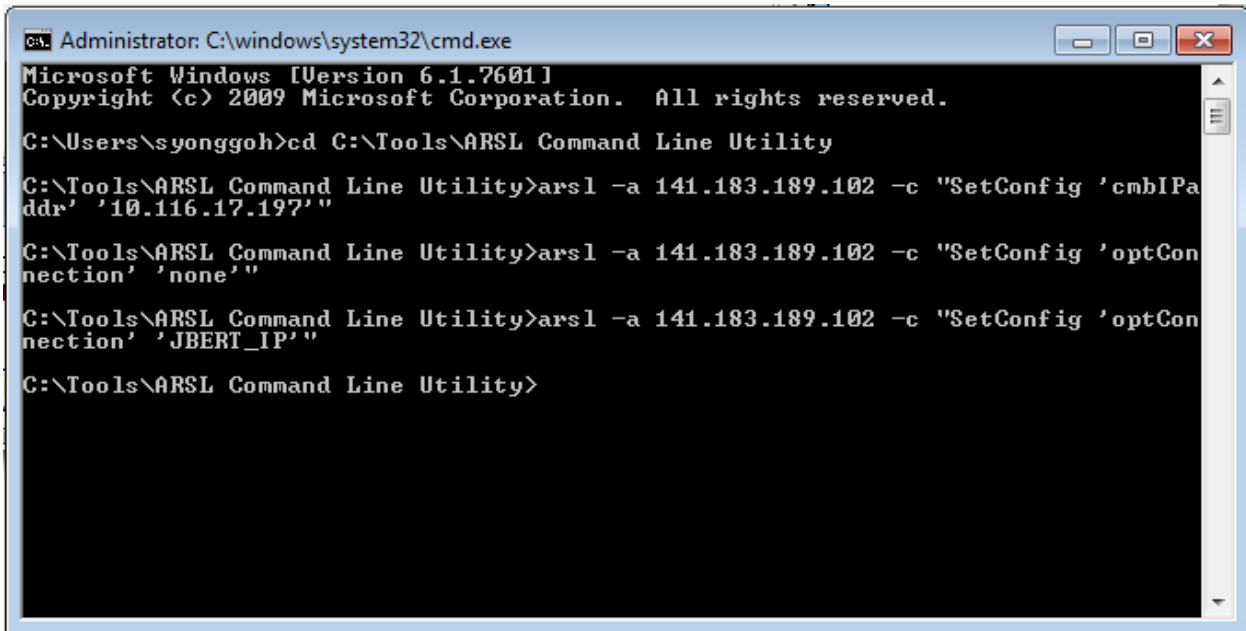
1. Set the "IP_cmbIPAddr" configuration variable:

```
arsl -a <Oscilloscope IP Address> -c "SetConfig 'cmbIPAddr' '<J-BERT IP Address>'"
```

2. Set the "optConnection" configuration variable:

```
arsl -a <Oscilloscope IP Address> -c "SetConfig 'optConnection' 'none'"
```

```
arsl -a <Oscilloscope IP Address> -c "SetConfig 'optConnection' 'JBERT_IP'"
```



```
Administrator: C:\windows\system32\cmd.exe
Microsoft Windows [Version 6.1.7601]
Copyright (c) 2009 Microsoft Corporation. All rights reserved.

C:\Users\syonggoh>cd C:\Tools\ARSL Command Line Utility

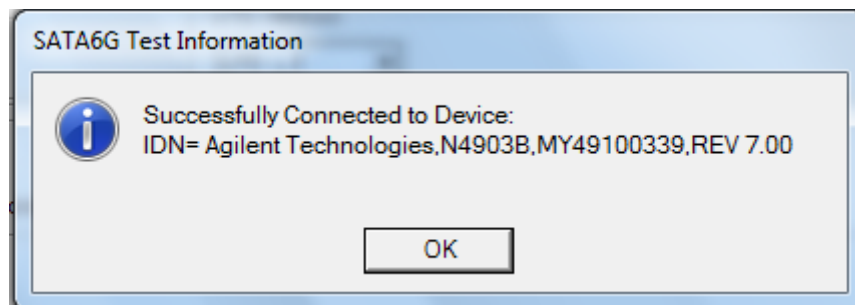
C:\Tools\ARSL Command Line Utility>arsl -a 141.183.189.102 -c "SetConfig 'cmbIPAddr' '10.116.17.197'"

C:\Tools\ARSL Command Line Utility>arsl -a 141.183.189.102 -c "SetConfig 'optConnection' 'none'"

C:\Tools\ARSL Command Line Utility>arsl -a 141.183.189.102 -c "SetConfig 'optConnection' 'JBERT_IP'"

C:\Tools\ARSL Command Line Utility>
```

3. The following message box will be shown if the connection to the N4903B High Performance Serial BERT (J-BERT) is success:



Using SICL Address:

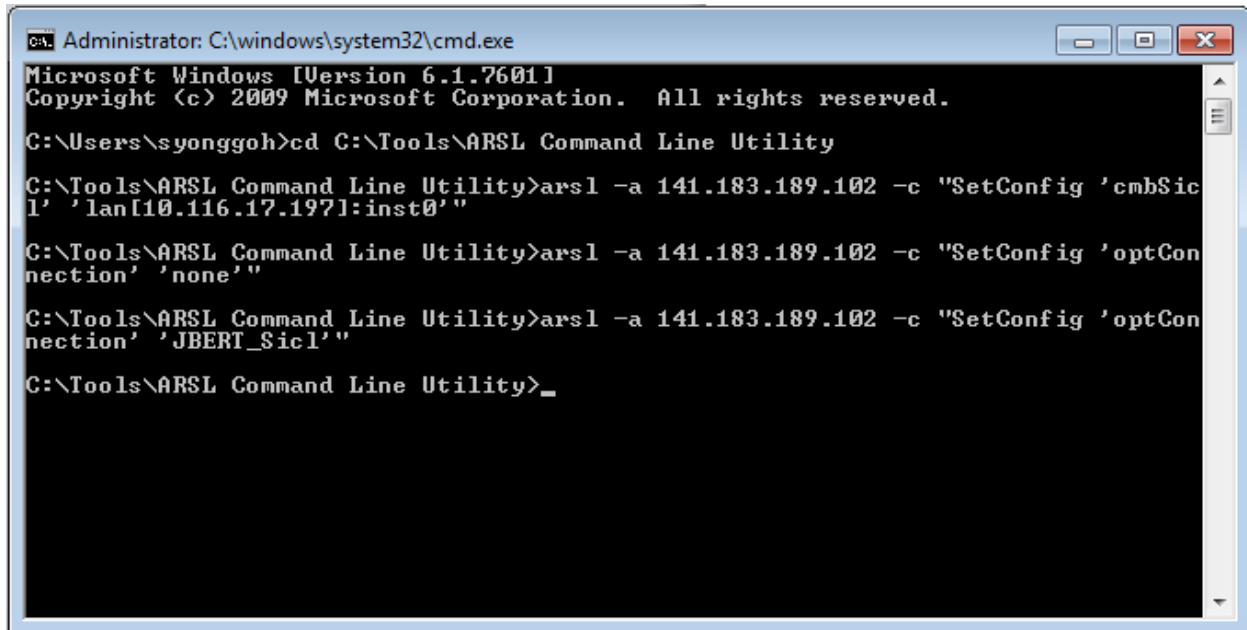
1. Set the "cmbSicl" configuration variable:

```
arsl -a <Oscilloscope IP Address> -c "SetConfig 'cmbSicl' '<JBERT Sicl Address>'"
```

2. Set the "optConnection" configuration variable:

```
arsl -a <Oscilloscope IP Address> -c "SetConfig 'optConnection' 'none'"
```

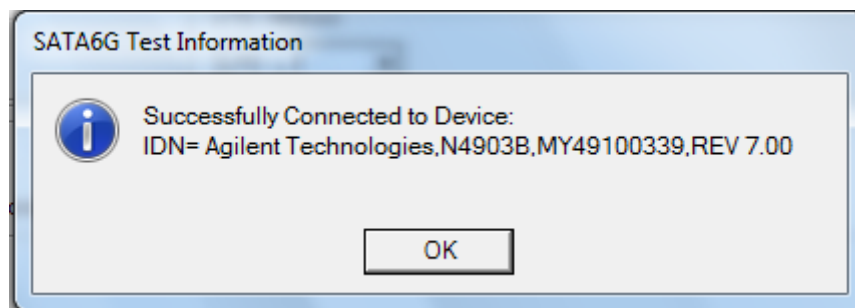
```
arsl -a <Oscilloscope IP Address> -c "SetConfig 'optConnection' 'JBERT_Sicl'"
```



```
Administrator: C:\windows\system32\cmd.exe
Microsoft Windows [Version 6.1.7601]
Copyright (c) 2009 Microsoft Corporation. All rights reserved.

C:\Users\syonggoh>cd C:\Tools\ARSL Command Line Utility
C:\Tools\ARSL Command Line Utility>arsl -a 141.183.189.102 -c "SetConfig 'cmbSicl' 'lan[10.116.17.197]:inst0'"
C:\Tools\ARSL Command Line Utility>arsl -a 141.183.189.102 -c "SetConfig 'optConnection' 'none'"
C:\Tools\ARSL Command Line Utility>arsl -a 141.183.189.102 -c "SetConfig 'optConnection' 'JBERT_Sicl'"
C:\Tools\ARSL Command Line Utility>_
```

3. The following message box will be shown if the connection to the N4903B High Performance Serial BERT (J-BERT) is success:



User can optionally suppress the message box by set the

NOTE “SuppressSimpleMessages” to “True” before set up the remote connection:

```
arsl -a <Oscilloscope IP Address> -c “SuppressSimpleMessages True”
```

NOTE Recommended to reset the “optConnection” to “none” every time before setup the connection to the stimulus.

M8020A High Performance BERT (J-BERT):

(The support for M8020A J-BERT only available for N5411B SATA6G Compliance Test Software version 1.81 and above)

Please follow the following steps to setup the M8020A High Performance BERT (J-BERT) stimulus remotely for the N5411B SATA6G Compliance Test Software.

Using IP Address:

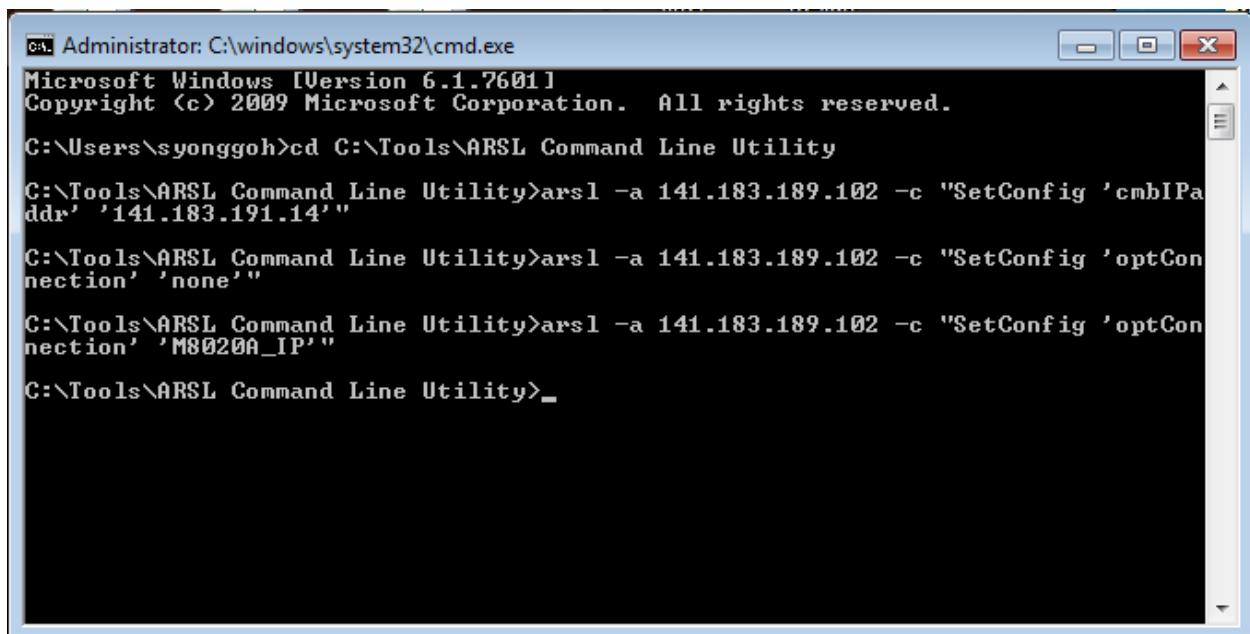
4. Set the "IP_cmbIPAddr" configuration variable:

```
arsl -a <Oscilloscope IP Address> -c "SetConfig 'cmbIPAddr' '<J-BERT IP Address>'"
```

5. Set the "optConnection" configuration variable:

```
arsl -a <Oscilloscope IP Address> -c "SetConfig 'optConnection' 'none'"
```

```
arsl -a <Oscilloscope IP Address> -c "SetConfig 'optConnection' 'M8020A_IP'"
```



```
Administrator: C:\windows\system32\cmd.exe
Microsoft Windows [Version 6.1.7601]
Copyright (c) 2009 Microsoft Corporation. All rights reserved.

C:\Users\syonggoh>cd C:\Tools\ARSL Command Line Utility

C:\Tools\ARSL Command Line Utility>arsl -a 141.183.189.102 -c "SetConfig 'cmbIPAddr' '141.183.191.14'"

C:\Tools\ARSL Command Line Utility>arsl -a 141.183.189.102 -c "SetConfig 'optConnection' 'none'"

C:\Tools\ARSL Command Line Utility>arsl -a 141.183.189.102 -c "SetConfig 'optConnection' 'M8020A_IP'"

C:\Tools\ARSL Command Line Utility>_
```

6. The following message box will be shown if the connection to the M8020A High Performance BERT (J-BERT) is success:



Using SICL Address:

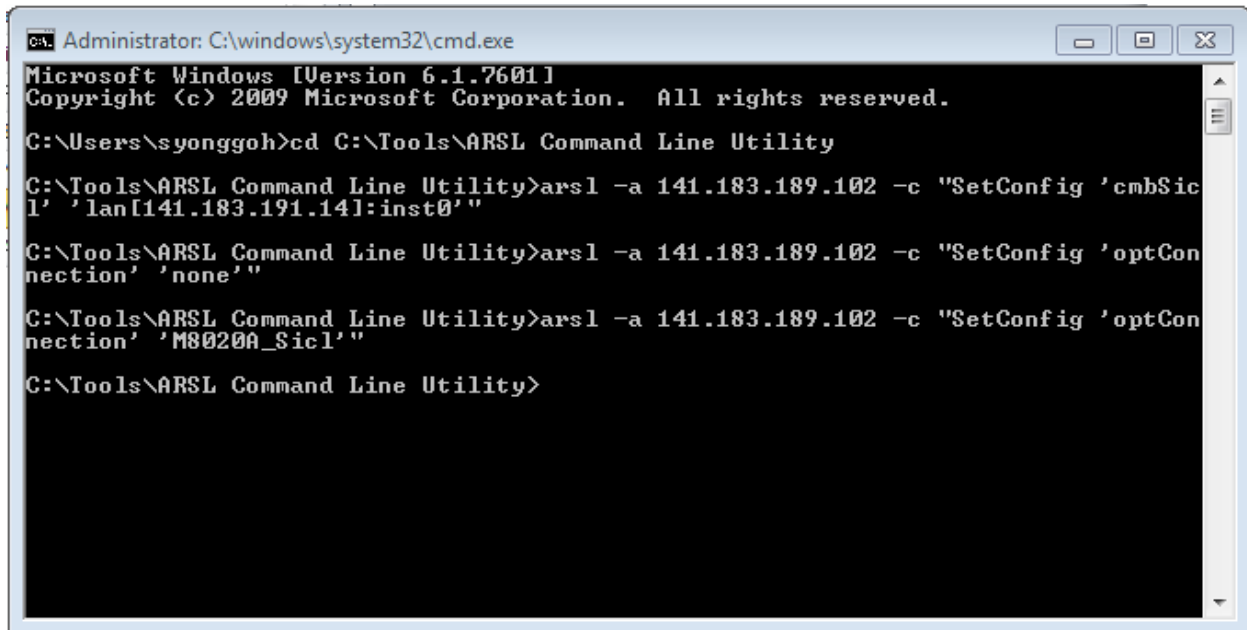
4. Set the "cmbSicl" configuration variable:

```
arsl -a <Oscilloscope IP Address> -c "SetConfig 'cmbSicl' '<JBERT Sicl Address>'"
```

5. Set the "optConnection" configuration variable:

```
arsl -a <Oscilloscope IP Address> -c "SetConfig 'optConnection' 'none'"
```

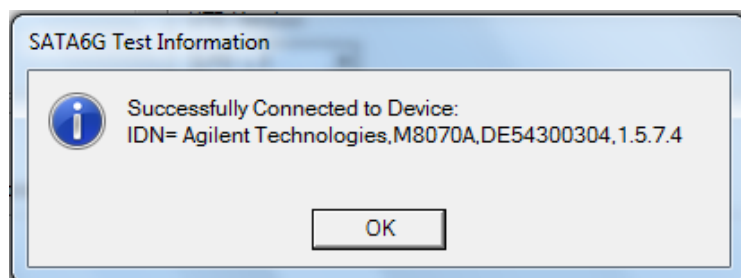
```
arsl -a <Oscilloscope IP Address> -c "SetConfig 'optConnection' 'M8020A_Sicl'"
```



```
Administrator: C:\windows\system32\cmd.exe
Microsoft Windows [Version 6.1.7601]
Copyright (c) 2009 Microsoft Corporation. All rights reserved.

C:\Users\syonggoh>cd C:\Tools\ARSL Command Line Utility
C:\Tools\ARSL Command Line Utility>arsl -a 141.183.189.102 -c "SetConfig 'cmbSicl' 'lan[141.183.191.141:inst0'"
C:\Tools\ARSL Command Line Utility>arsl -a 141.183.189.102 -c "SetConfig 'optConnection' 'none'"
C:\Tools\ARSL Command Line Utility>arsl -a 141.183.189.102 -c "SetConfig 'optConnection' 'M8020A_Sicl'"
C:\Tools\ARSL Command Line Utility>
```

6. The following message box will be shown if the connection to the M8020A High Performance BERT (J-BERT) is success:



User can optionally suppress the message box by set the

NOTE “SuppressSimpleMessages” to “True” before set up the remote connection:

```
arsl -a <Oscilloscope IP Address> -c “SuppressSimpleMessages True”
```

NOTE Recommended to reset the “optConnection” to “none” every time before setup the connection to the stimulus.

Appendix:

GUI Location	Label	Variable	Values	Description
Set Up	Stimulus Instrument Connection	optConnection	none, PPG_IP, PPG_Sicl, JBERT_IP, JBERT_Sicl	REMOTE ONLY: Determine whether tests that require a stimulus instrument availability are loaded in the test tree. If the remote user desires to use 81134A as stimulus, the value "PPG_IP" or "PPG_Sicl" is applicable for setting the IP address or Sicl Address respectively. Else if the remote user desires to use N4903B as stimulus, the value "JBERT_IP" or "JBERT_Sicl" is applicable for setting the IP address or Sicl Address respectively. The software will return the state whether the stimulus instrument connection attempt has been successful or failed. In any case, the user has to issue a "none" value again before attempting for another round of pulse generator connection. After the software detects that it is remotely controlled, the Automation panel in the Setup tab would be disabled. There is also a Re-enable button to re-enable the Automation panel for the user to access the Automation panel locally.
Set Up	Stimulus Instrument IP Address	cmbIPAddr	(Accepts user-defined text)	REMOTE ONLY: Sets the IP address for the pulse generator. The IP or Sicl Address must be explicitly set before any stimulus connection attempt. REMOTE ONLY: Sets the IP address for the pulse generator.
Set Up	Stimulus Instrument Sicl Address	cmbSicl	(Accepts user-defined text)	REMOTE ONLY: Sets the Sicl address for the pulse generator stimulus. The IP or Sicl Address must be explicitly set before any stimulus connection attempt. REMOTE ONLY: Sets the Sicl address for the pulse generator stimulus. The IP or Sicl Address must be explicitly set before any stimulus connection attempt.

© Keysight Technologies 2000-2014