

Channel Scanning & Google Earth Software Solution

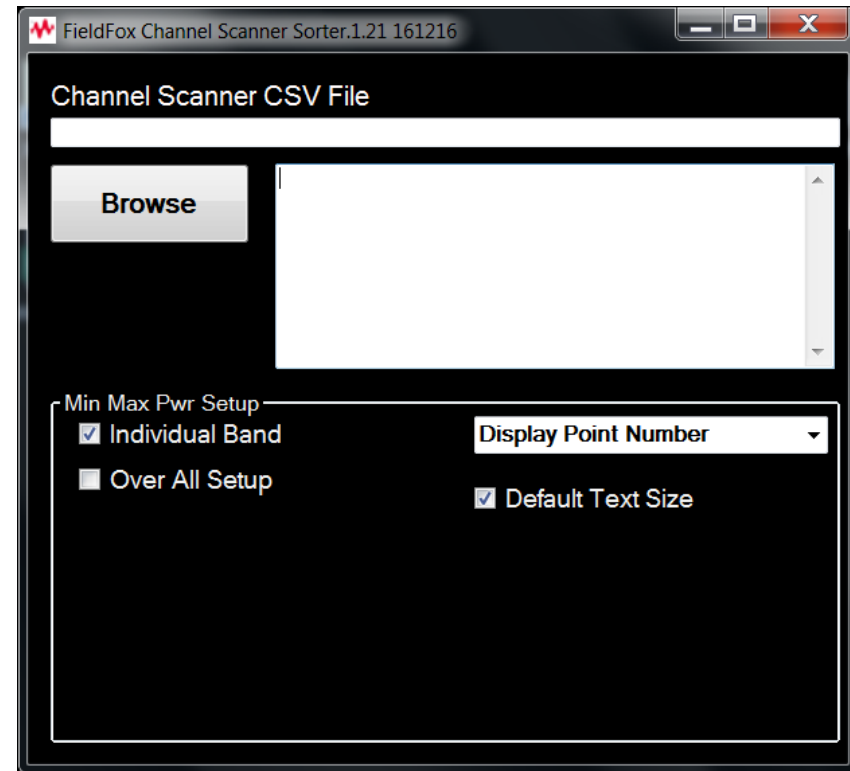
Dec 2016

Timothy Lee
Application Engineer

Channel Scanning Result in Google Earth

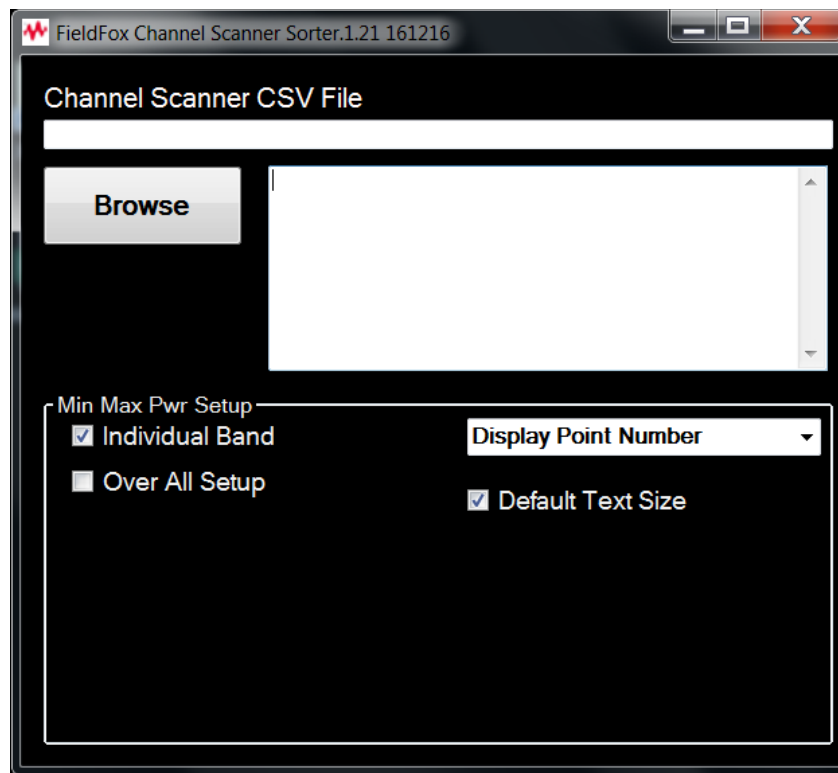
PC Solution

- FieldFox is able to create either a kml (Google Earth) or csv file in Channel Scanner mode.
- Application engineers in the field can use the software to create csv files for kml coding.
- This software allows customization of the data displayed on Google Earth.

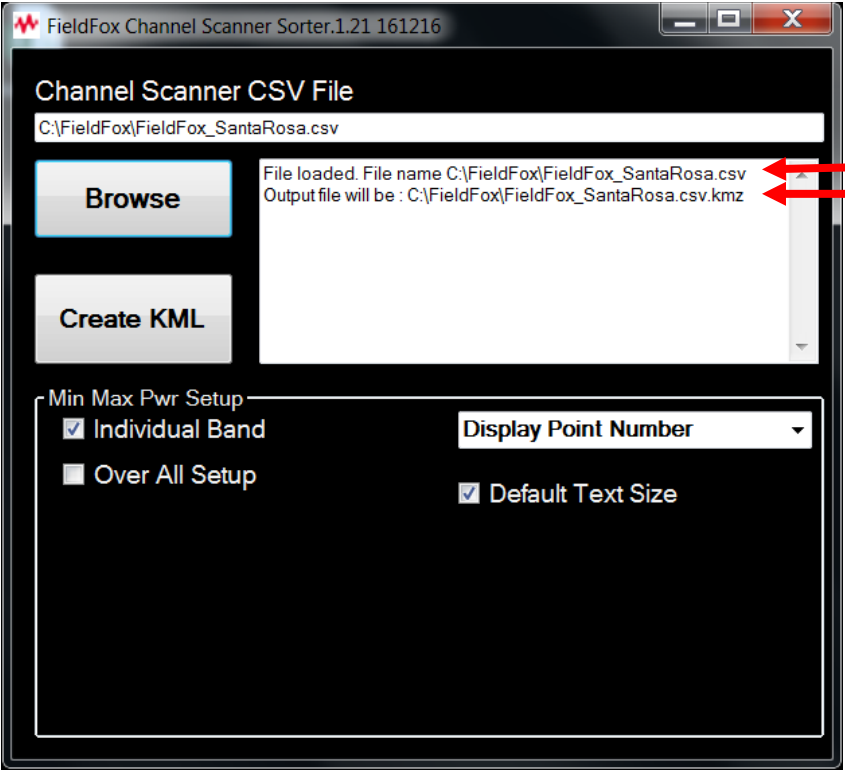


Open csv data file that was created by FieldFox

1. Click on
Browse to locate
the csv file.



Display of csv file information



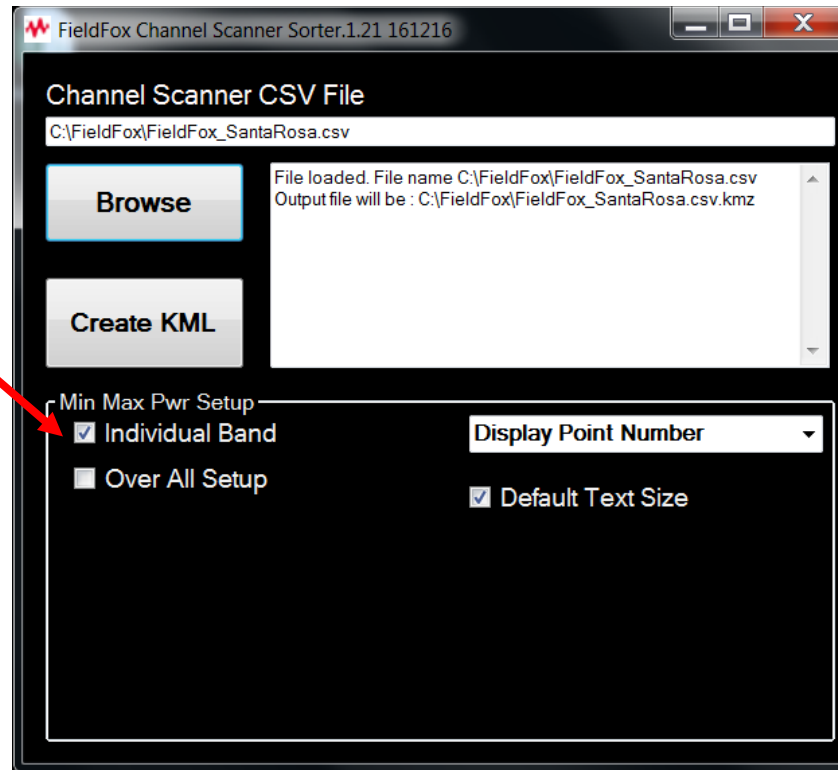
2. Selected file information will be displayed

Channel Scanning Result in Google Earth

3. Default selection.
Individual Band means
the output file will list
each frequency band's
power separately.

Band1 Max-Min power
might be different from
Band2.

Select this option to
optimize each
frequency's power level
individually.

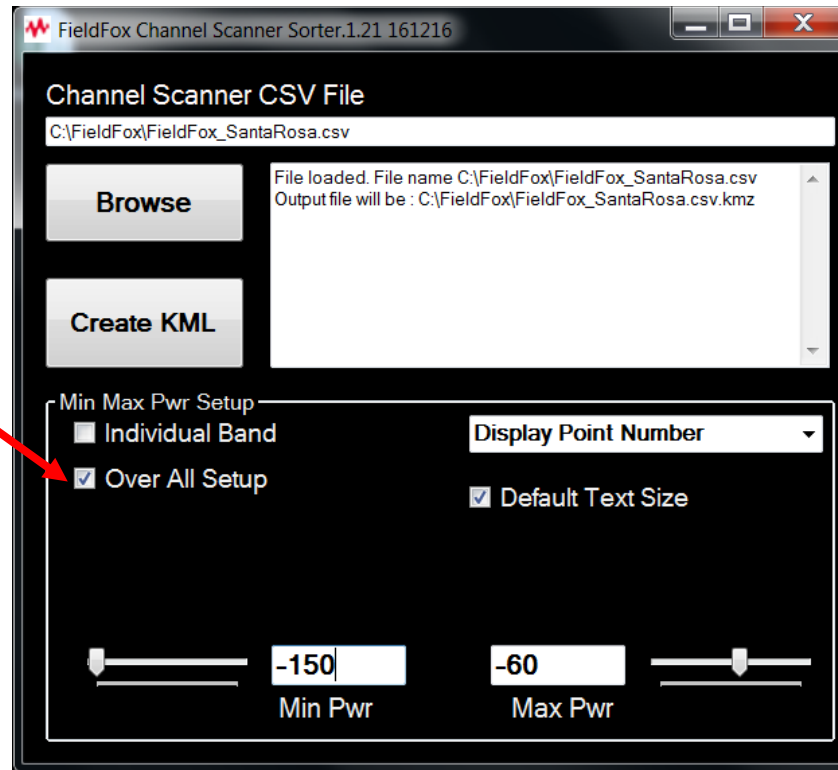


Channel Scanning Result in Google Earth

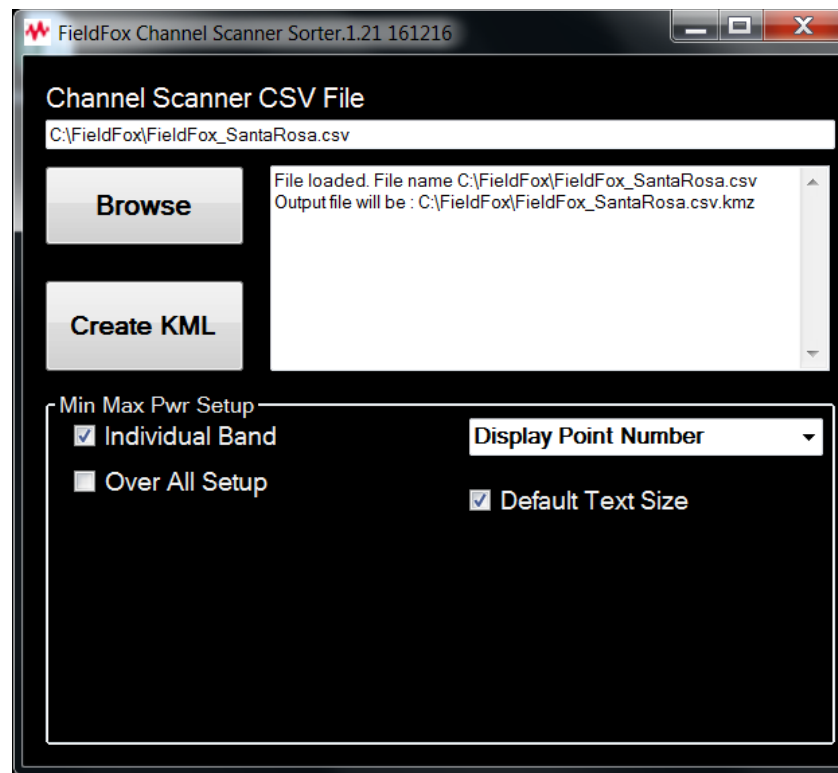
4. Select this option if the same min-max power range is desired for all channels or frequency bands.

This is useful when comparing the relative power across the frequency bands.

In this case, the lowest reference power is -150 dBm and highest is -44 dBm.

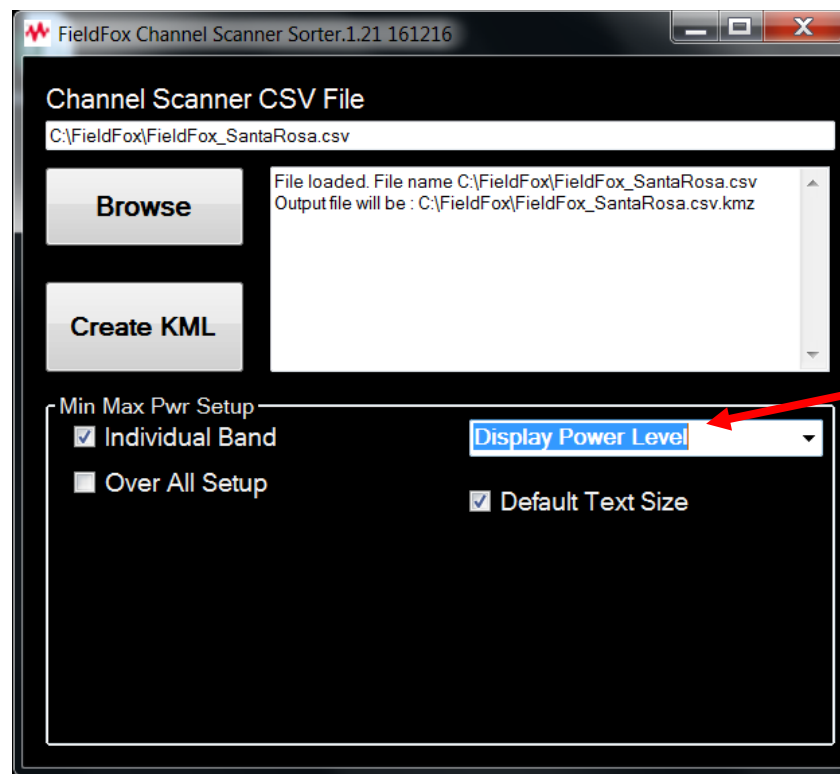


Channel Scanning Result in Google Earth



5. Display the point number on Google Earth using the default text size of 1.

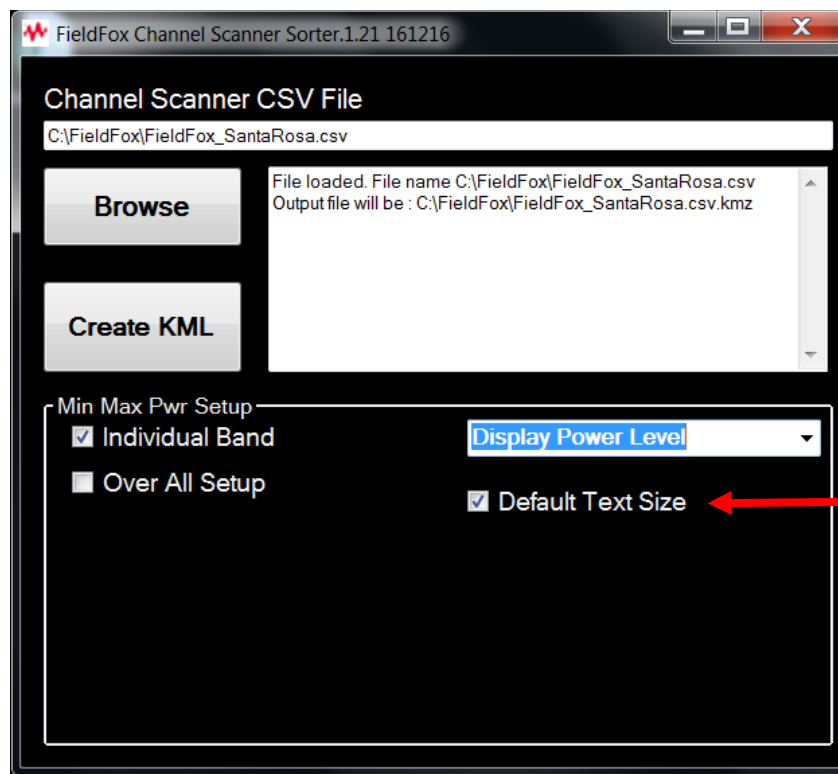
Channel Scanning Result in Google Earth - Solution



6. This will display the power level at the point displayed in Google Earth.

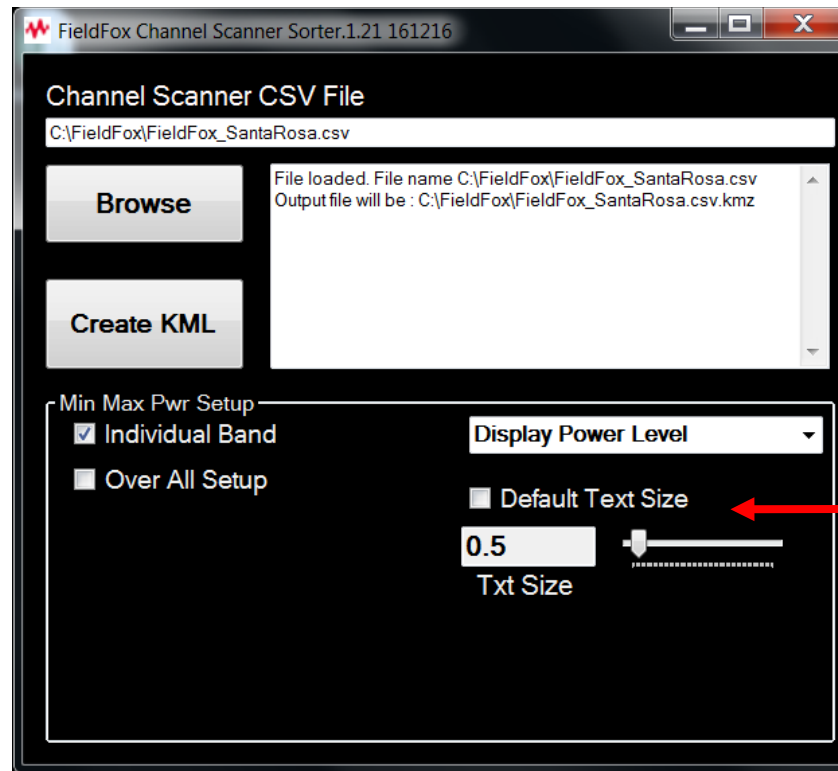
This is especially useful when the user needs to have a quick look at the power level value.

Channel Scanning Result in Google Earth - Solution



7. This selection controls the font size of the data on Google Earth. Default is 1.

Channel Scanning Result in Google Earth - Solution

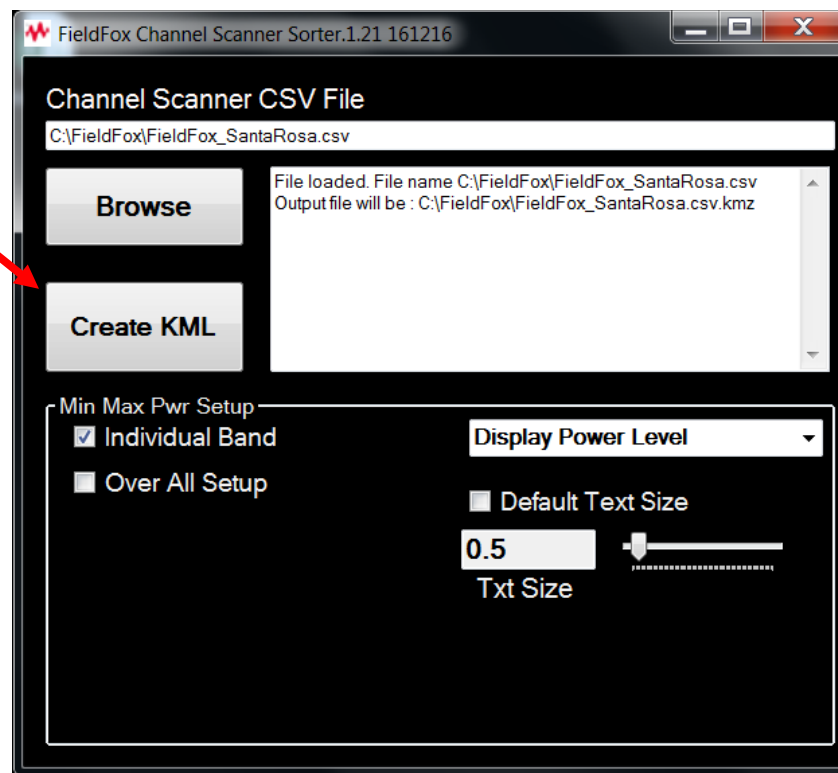


8. Allows user to change the font size on Google Earth. Maximum size is 8.

Channel Scanning Result in Google Earth - Solution

9. Once done with the setup, click on “Create KML”

Google Earth and a web browser will be opened at the end of the process.



Channel Scanning Result in Google Earth

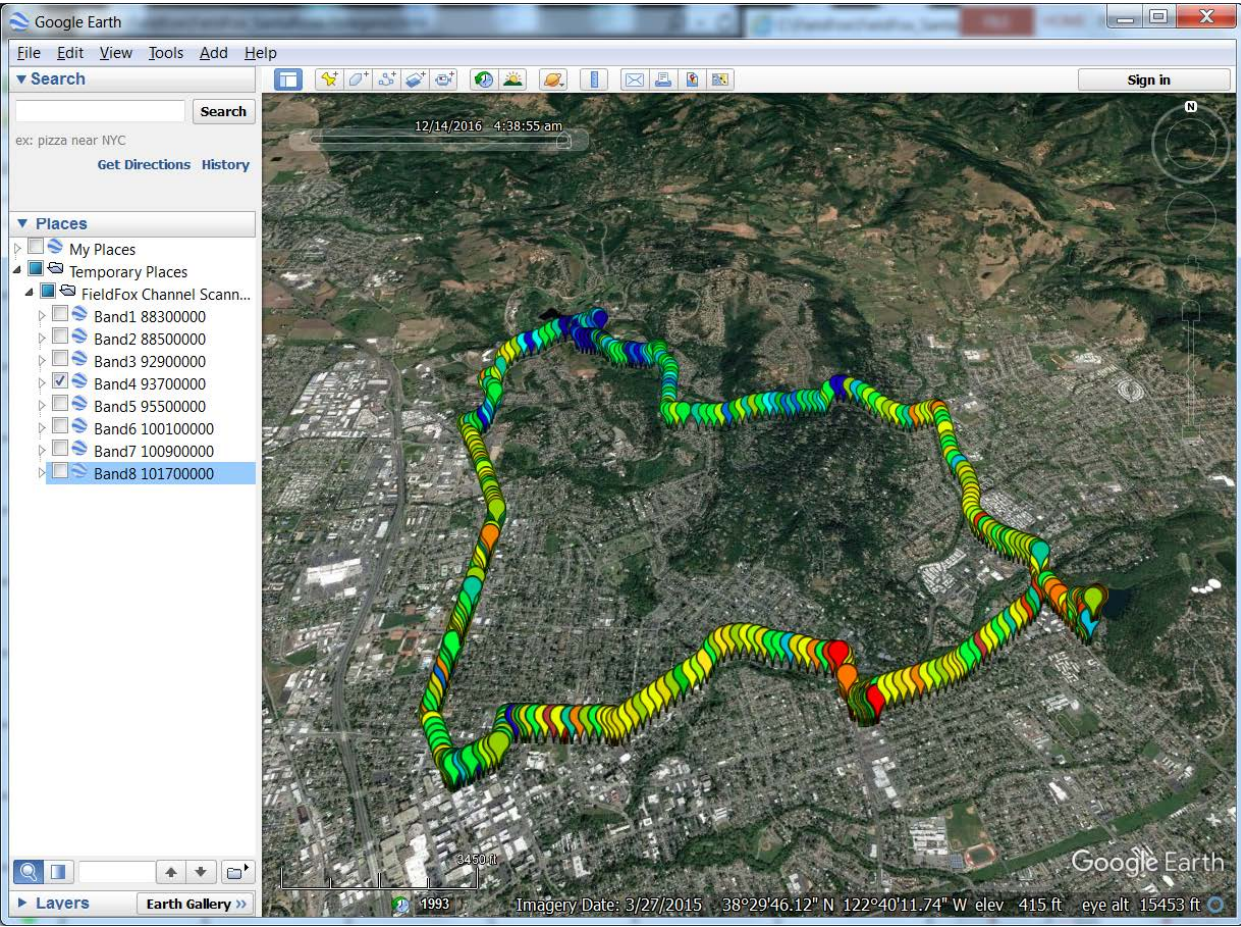
Icon Color Legends. Color vs Power Level

Icon	PwrLvl @88300000	PwrLvl @88500000	PwrLvl @92900000	PwrLvl @93700000	PwrLvl @95500000	PwrLvl @100100000	PwrLvl @100900000	PwrLvl @101700000
	-55.02	-72.24	-62.94	-35.28	-54.88	-28.1	-69.91	-39.53
	-56.26	-72.62	-63.78	-37.45	-56.13	-30.57	-70.4	-41.53
	-57.5	-73	-64.62	-39.62	-57.38	-33.04	-70.89	-43.53
	-58.74	-73.38	-65.46	-41.79	-58.63	-35.51	-71.38	-45.53
	-59.98	-73.76	-66.3	-43.96	-59.88	-37.98	-71.87	-47.53
	-61.22	-74.14	-67.14	-46.13	-61.13	-40.45	-72.36	-49.53
	-62.46	-74.52	-67.98	-48.3	-62.38	-42.92	-72.85	-51.53
	-63.7	-74.9	-68.82	-50.47	-63.63	-45.39	-73.34	-53.53
	-64.94	-75.28	-69.66	-52.64	-64.88	-47.86	-73.83	-55.53
	-66.18	-75.66	-70.5	-54.81	-66.13	-50.33	-74.32	-57.53
	-67.42	-76.04	-71.34	-56.98	-67.38	-52.8	-74.81	-59.53
	-68.66	-76.42	-72.18	-59.15	-68.63	-55.27	-75.3	-61.53
	-69.9	-76.8	-73.02	-61.32	-69.88	-57.74	-75.79	-63.53

D:\KS.csv\iegna.ntml

of legend file

Channel Scanning Result in Google Earth



Channel_Scanner.csv.kmz

Click this for sample output of kmz file