

# Keysight M3xxxA Product Family Firmware Update Instructions

## Notes:

- This document was created using Microsoft Windows 7 64-bit OS PC screenshots, but you can apply the same procedure on any other supported platform.
- The SD1 software installation is required for updating your module firmware.

## Download the Firmware

### Online FW updates

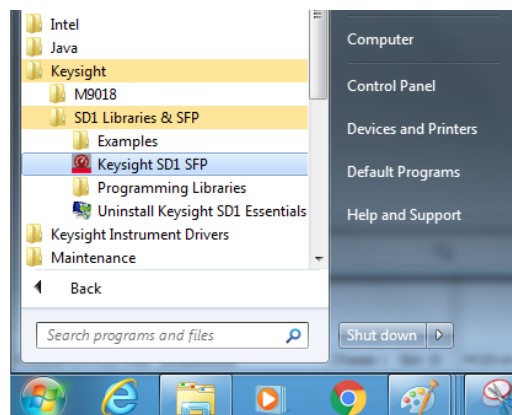
Firmware updates are available online and the Hardware Manager connects automatically to the FW database to obtain the latest available releases and previous ones as well.

### Offline FW updates

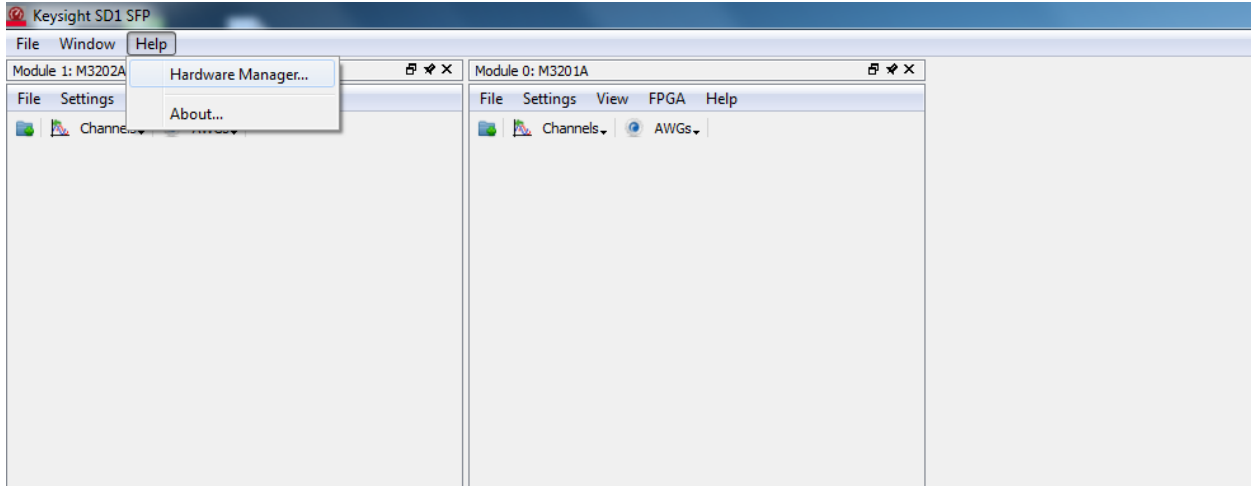
In case the chassis controller has no internet access it is possible perform updates offline, for that it is necessary to download the desired firmware update from target module web page in advanced. Go to [www.keysight.com](http://www.keysight.com), search your module page and enter to Technical Support page. Open the firmware update resource which is in “Drivers, Firmware & Software” tab. Click on the Download button and save the file to the desired location on your PC.

## Update the Firmware

1. Open the SD1 Software Front Panel from Windows start button.



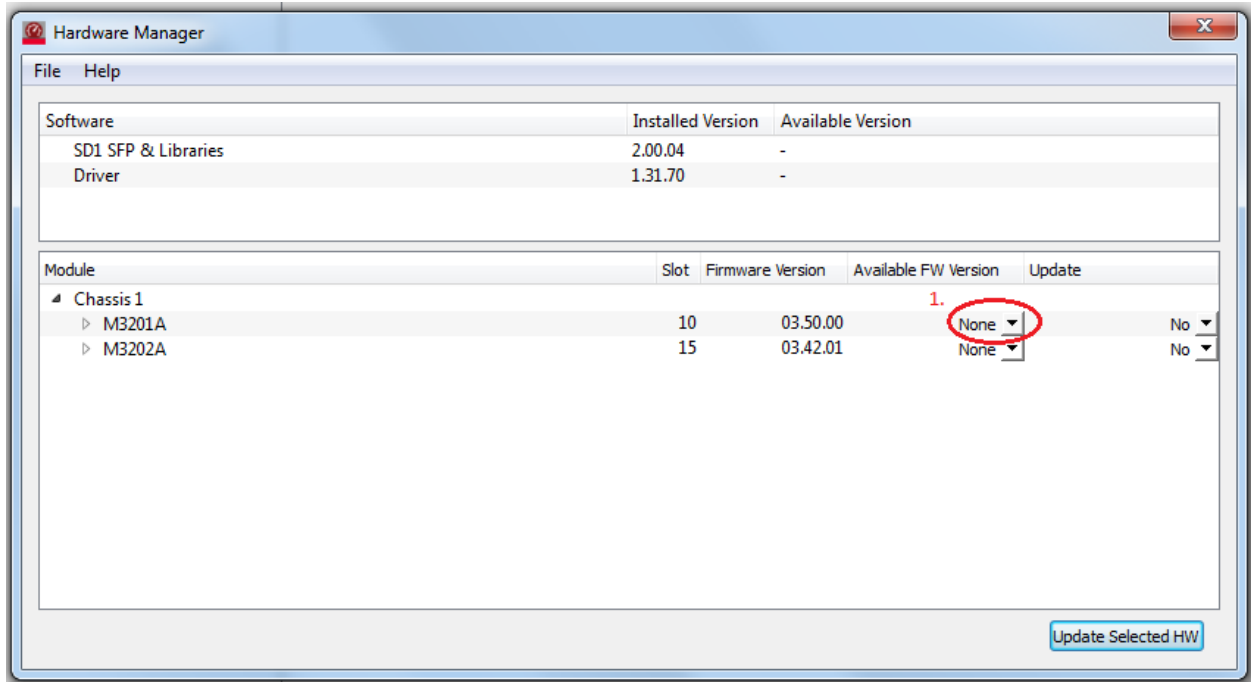
2. From main window of SD1 Software Front Panel, open the Hardware Manager panel with “Help->Hardware Manager...” action:



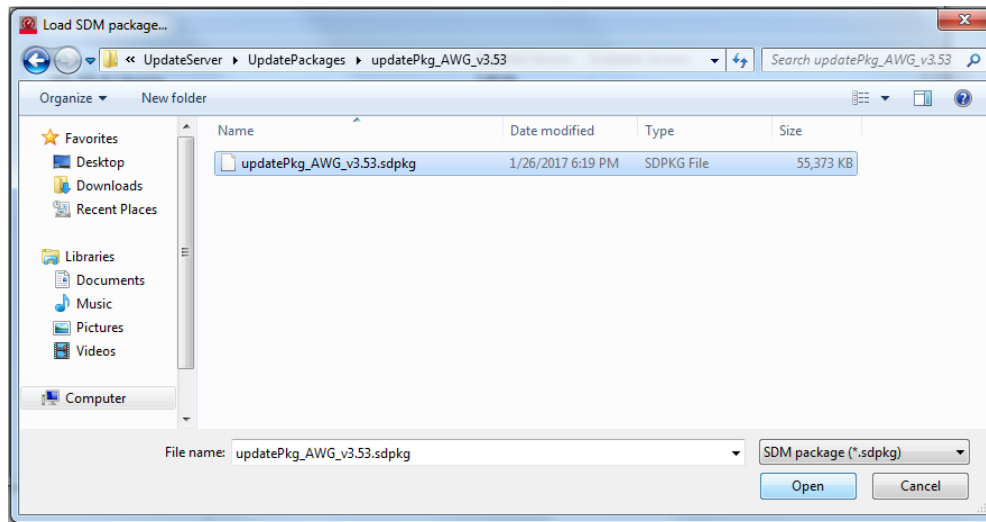
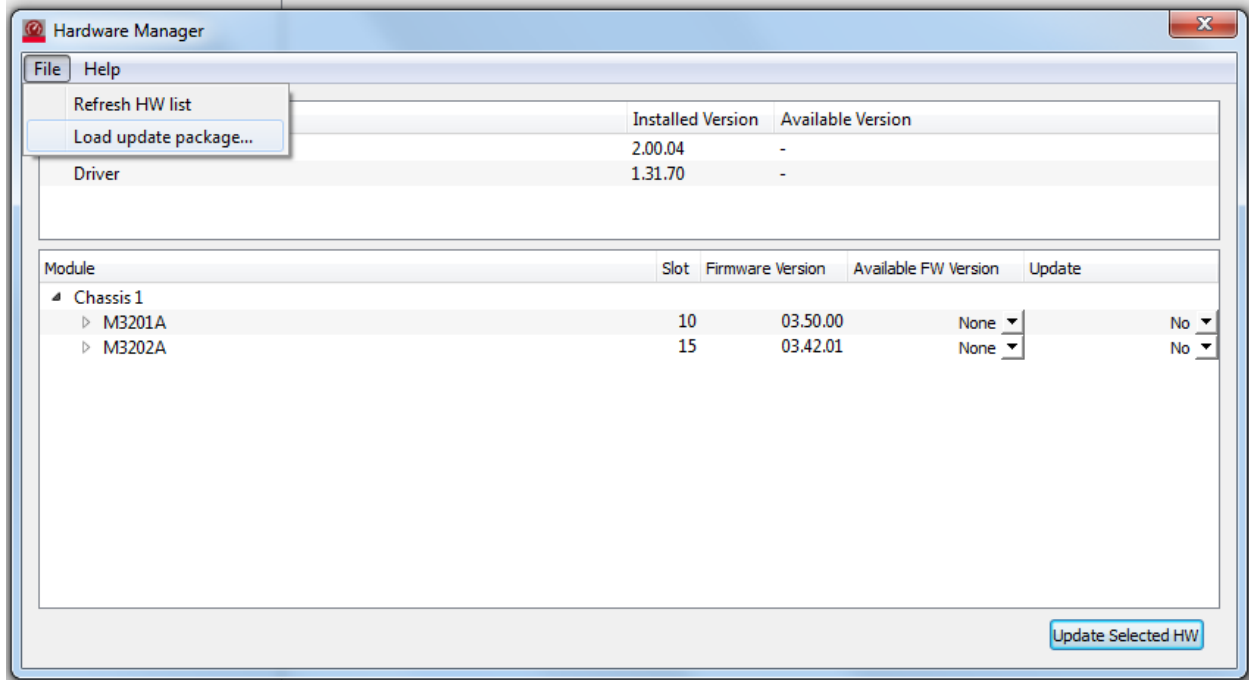
3. Search your module in the module list that it is shown on the Hardware Manager.

If the chassis controller is online with internet connection the available FW releases will be shown automatically. Jump to step 6

If the system is offline or for some reason the connection to the FW server fails, the available firmware version list will be empty or not fully up-to-date (1. in below picture). Proceed with Step 4

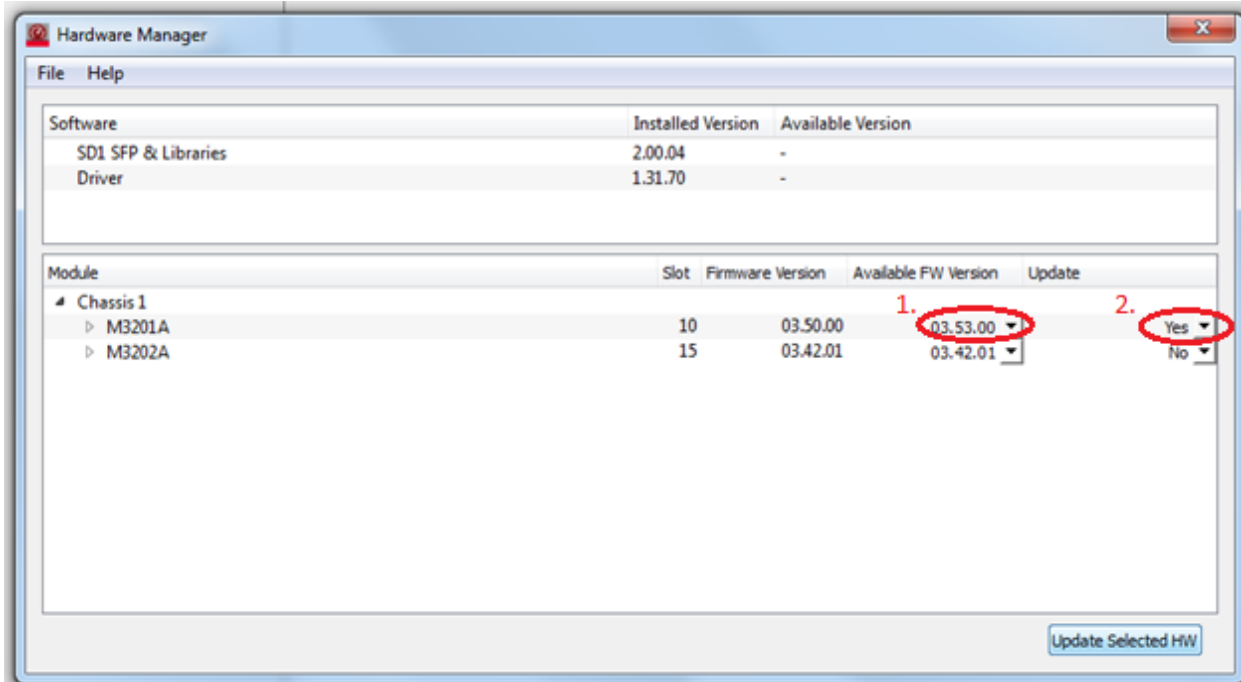


4. (only for offline updates) Open the “File->Load update package...” dialog and select the downloaded update package file.



5. (only for offline updates) Notice that now there is a new available firmware version of your module.

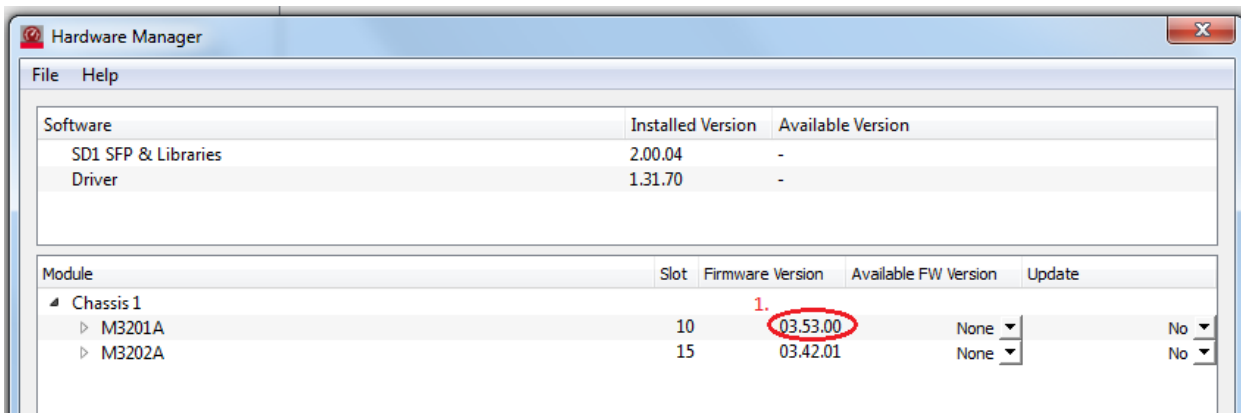
6. So select the new loaded version in the combo box which is showed on the “Available FW Version” column (1.) and check that the “Update” column is set as “Yes” (2.).



7. Finally, press “Update Selected HW” button. Then, you would see the firmware programming process.

8. When the firmware programming process finishes, you need to SHUTDOWN your computer (restart is NO option) if you want to use the new version of your firmware in your module.

9. After computer’s shutdown, you can startup your computer for checking the new uploaded firmware version of your module. So open again the “Hardware Manger” panel in SD1 Software Front Panel. You would see the current module firmware version as the desired updated firmware version. (1.).



10. Your module is now updated and ready to use with the new firmware version.