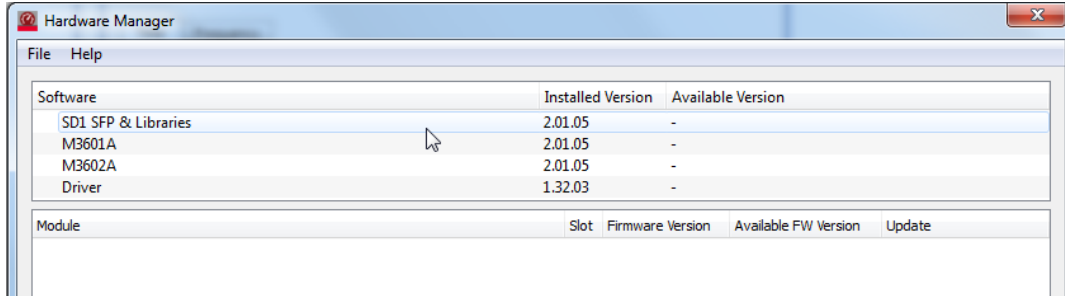


M360XA Set Up License Instructions

IMPORTANT NOTE: When contacting Keysight support, please include the following information:

- Operative System is used, like Windows 7 64-bit.
- Software product name and its version. The version of software can be found in the splash screen or using “Help->About...” menu using software main window, or in the software installer name.
- Screenshot of the Hardware Manager dialog. It can be opened in SD1 SFP (though “Help>Hardware Manager” menu action), like:

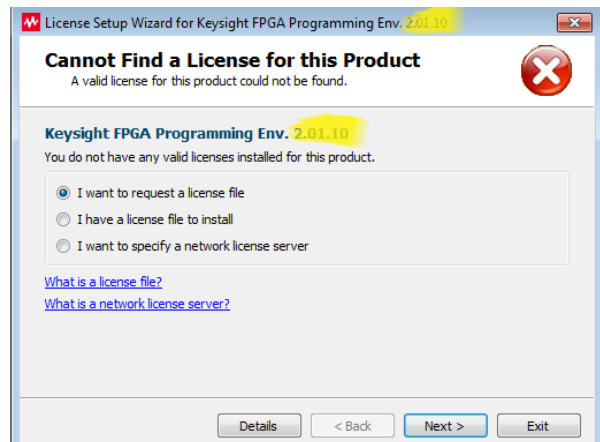
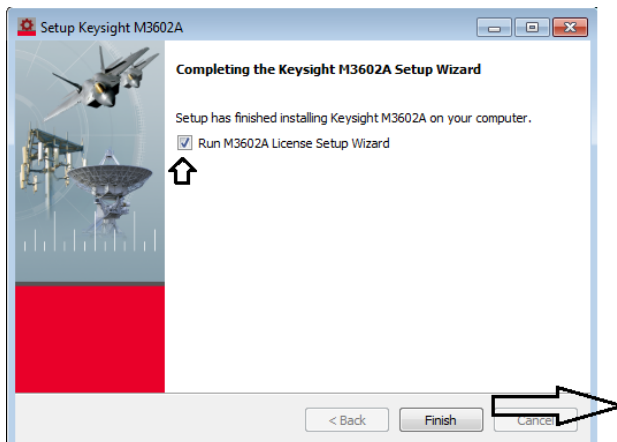


NOTE: This document is created with respect to Microsoft Windows 7 64-bit OS PC, but the same (or similar) actions can be applied using the other supported software platforms.

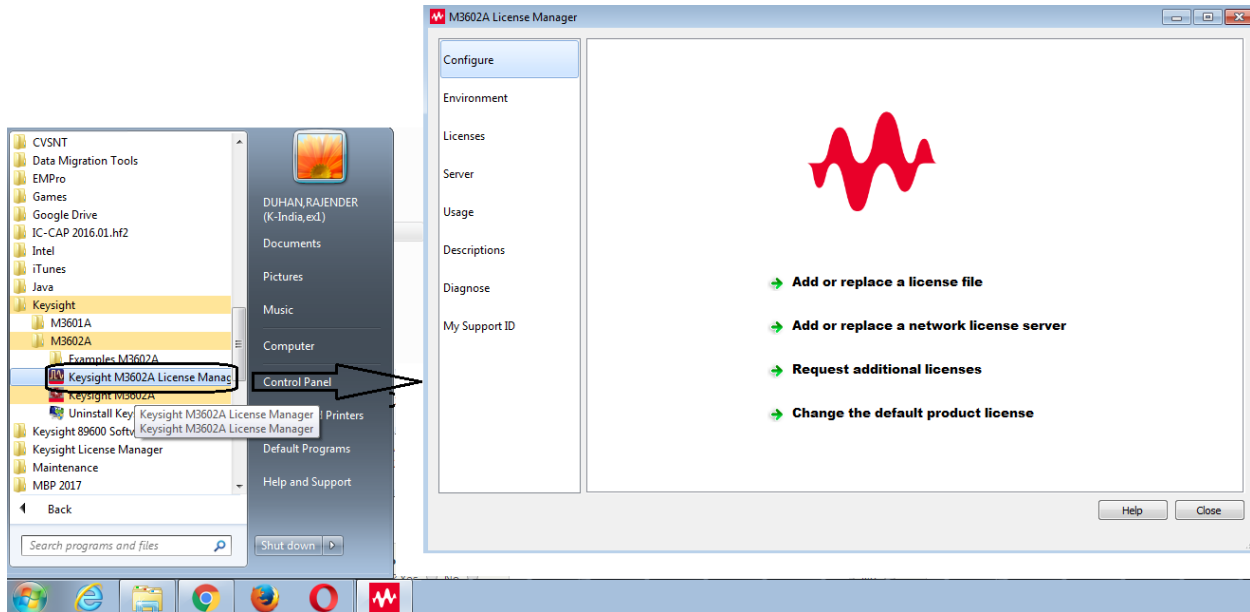
NOTE: These instructions are created using M3602A software, but it is the same process for M3601A software.

M3602A License Setup

1. At the end of installation, the **License Setup Wizard** starts automatically after detecting that you do not have a valid license to start M3602A.

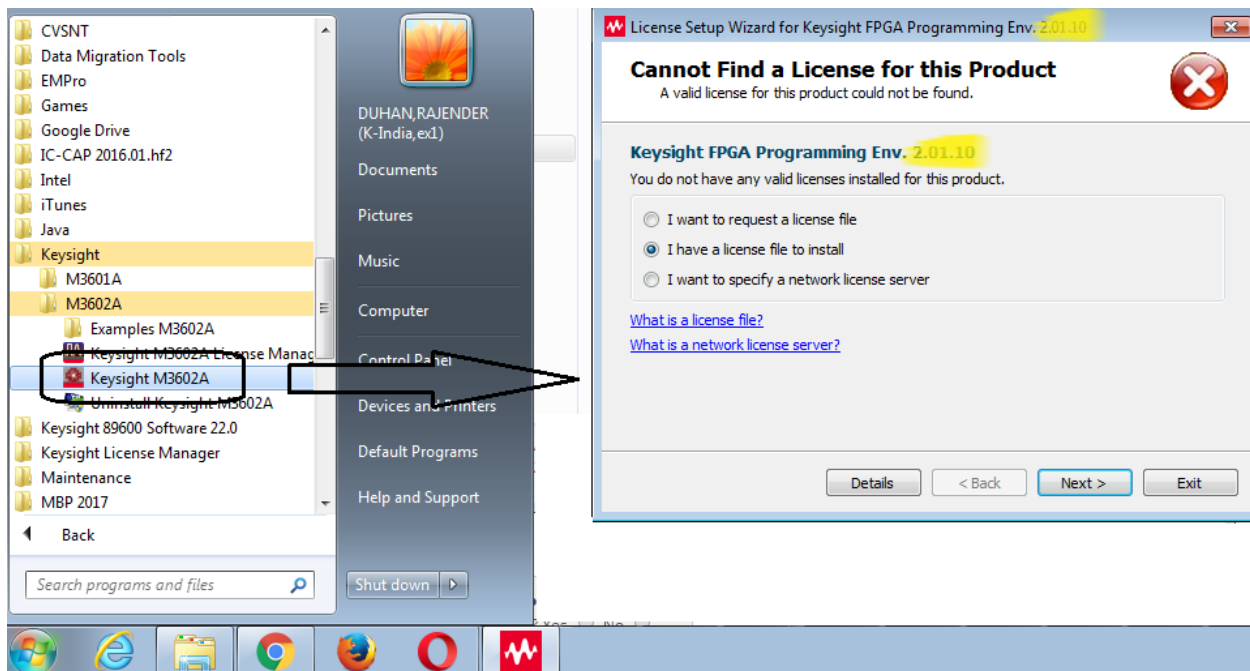


2. If you choose to skip the license setup in above step, you can complete the process later by
 - a. Clicking “Start > All Programs > Keysight > M3602A > **Keysight M3602A License Manager**”

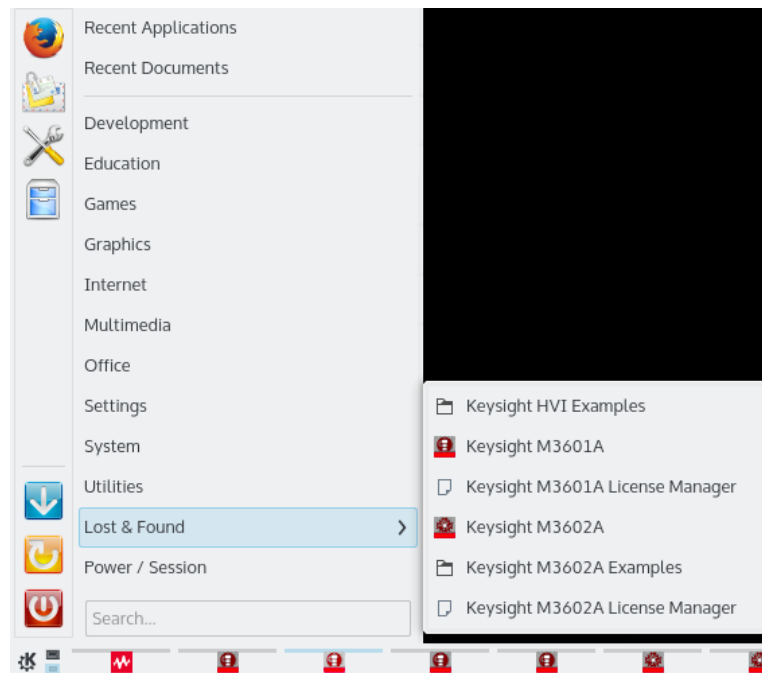


OR

- b. As soon as you try to run Software by clicking “Start > All Programs > Keysight > M3602A > Keysight M3602A”, **License Setup Wizard** starts automatically after detecting that you do not have a valid license to start M3602A.



NOTE: For Linux, “**Keysight M3602A License Manager**” and “**Keysight M3602A**” menus can be found under “**Lost and Found**” from Panel. See as below:



Setup a license file

To setup a license file, select the “**Add or replace a license file**” or “**I have a license file to install**” option from above windows and follow the guided tour to complete the license setup process.

Setup a Floating License server running on network

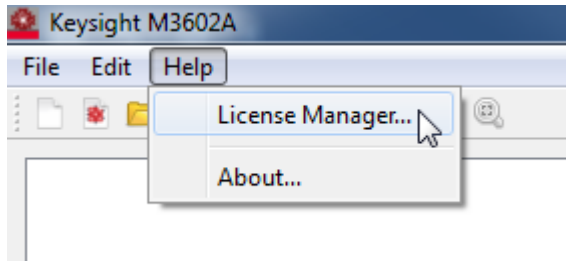
To setup a floating license, select the “**Add or replace a network license server**” or “**I want to specify a network license server**” option from above windows and follow the guided tour to complete the license setup process. Consult your license administrator for the network path of the license server.

Note: More EEsof Licensing related instructions/details can be looked from Licensing (for Administrators). Licensing (for Administrators) is basically EEsof Licensing Help which can be invoked by clicking on “**Help**” button from M3602A License Manager window. If you still see any license issue/error during License Setup or/and using software, please contact EEsof support explaining the occurred issue with required details including snapshot of error messages.

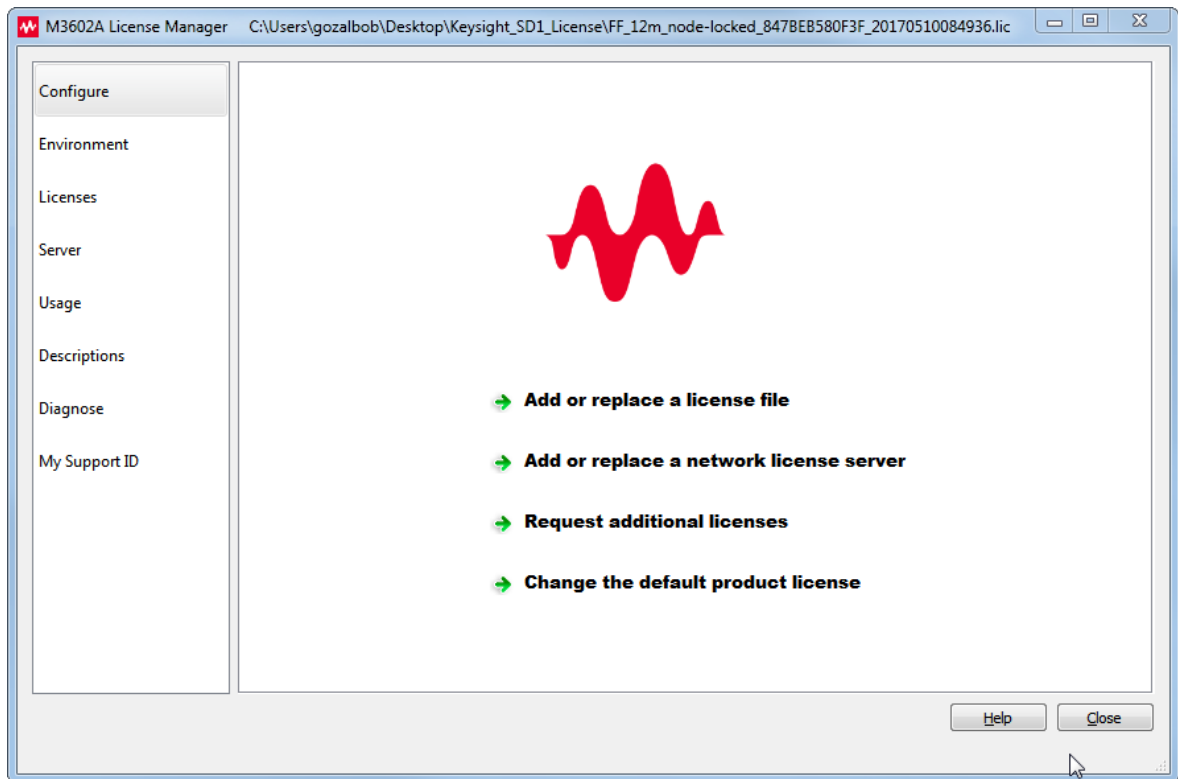
Manage licenses

For managing software licenses, the License Manager dialog is needed:

1. Open the software.
2. In the software main window, click “Help->License Manager...”

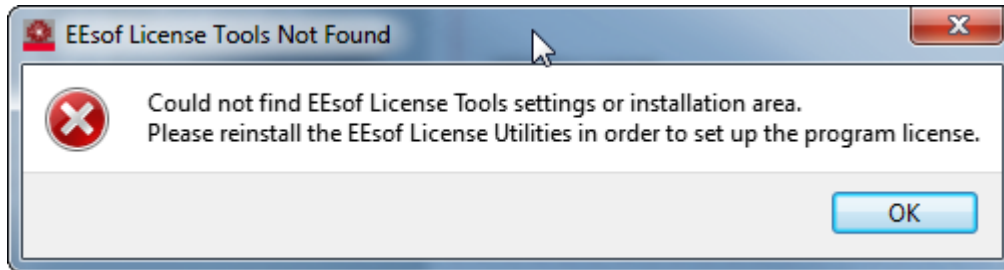


3. The License Manager appears. Using this dialog, the license system can be managed. For instance, licenses can be added and removed, and License server state can be checked.



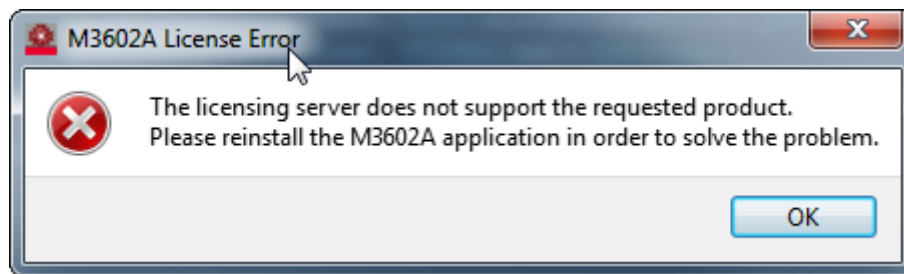
License troubleshooting

- If the M360XA software shows an error message about installation error of EEsof License Tools, like:



Please Check if the EEsof License Tools are installed in the computer:

- By default, on Windows they are installed in "C:\Program Files\Keysight\EEsof_License_Tools\bin\". Check if this location exists.
 - Otherwise, search the "EEsof License Tools" entry in the installed software manager of the Operative System (p. e. "Programs and Features" panel on Windows 7).
- ✓ If the EEsof License Tools are not present in the computer, please install them from <http://edadocs.software.keysight.com/display/downloads/Licensing+Software+Downloads> webpage, and start again setting up license from the beginning.
- If the M360XA software shows a license error like:



It means the application M360XA was not installed properly. Please reinstall it in order to fix this error.

- ✓ If the error persists, please contact CSG support explaining the occurred issue.