



## Firmware Update

### Required Equipment

- E4991A (with keyboard and mouse)
- Three blank floppy disks (DOS format)

### How to make the E4991A Firmware Installation Disk

The following is the procedure to make the E4991A Firmware Installation Disk.

**Step 1.** Copy the following files from Agilent Technologies web site to the three floppy disks using your computer's FDD.

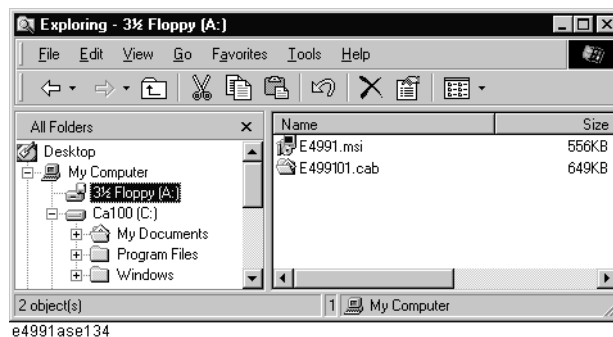
- disk1(1 of 3)-- e4991a.msi, e499101.cab
- disk2(2 of 3)-- e499102.cab
- disk3(3 of 3)-- e499103.cab

**Step 2.** Assign the Label name as follows using the properties of your computer's Windows Explorer as shown in Figure 1.

- DISK\_1 (for disk1)
- DISK\_2 (for disk2)
- DISK\_3 (for disk3)

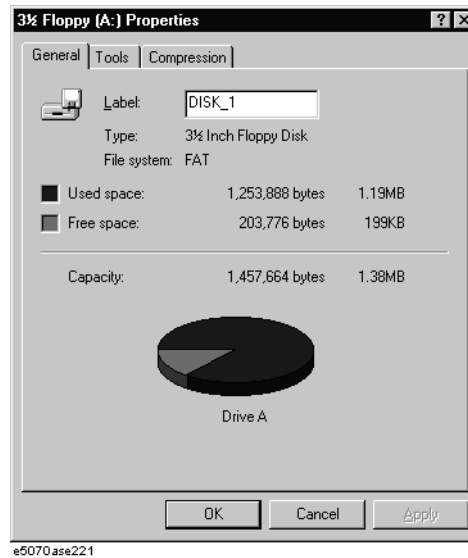
Figure 1

### Windows Explorer (example)



1. Insert the disk1(1 of 3) into the FDD of your computer.
2. On the Windows Explorer, click **3 1/2 Floppy [A:]** and confirm the files.
3. Right click on **3 1/2 Floppy [A:]**, then click **Properties**. The Properties dialog box appears.
4. Enter the Label name in the Label box of properties dialog box (General) for the disk1 as shown in Figure 2, and press the **OK** button.

Figure 2 Properties Dialog Box (example)



5. Perform 1 through 4 for each disk.

---

**NOTE**

If the label name is not assigned, the firmware update for the E4991A will not be done correctly.

---

### How to update the E4991A firmware

It is possible to update the E4991A firmware, but not the following software by this procedure.

- OS (Operating System)
- VBA (Visual Basic for Application)
- Calibration Constant Data

The following is the procedure to update the E4991A firmware.

- Step 1.** Prepare the E4991A firmware installation disks (three disks).
- Step 2.** Connect the mouse and the keyboard to the E4991A rear panel. Then turn the E4991A on.
- Step 3.** Exit from the E4991A Measurement Display.
  1. Click **System - Exit** on the menu bar, and the Enter Password to exit dialog box will appear.
  2. Enter the password **e4991a** into the Password box.
  3. Click the **OK** button. Then windows desktop screen is displayed.
- Step 4.** Double-click the “**My Computer**” icon on the Windows desktop.
- Step 5.** Insert the E4991A firmware installation disk1 (1 of 3) into the FDD of the E4991A.
- Step 6.** Double-Click the “**3 1/2 Floppy [A:]**” icon.

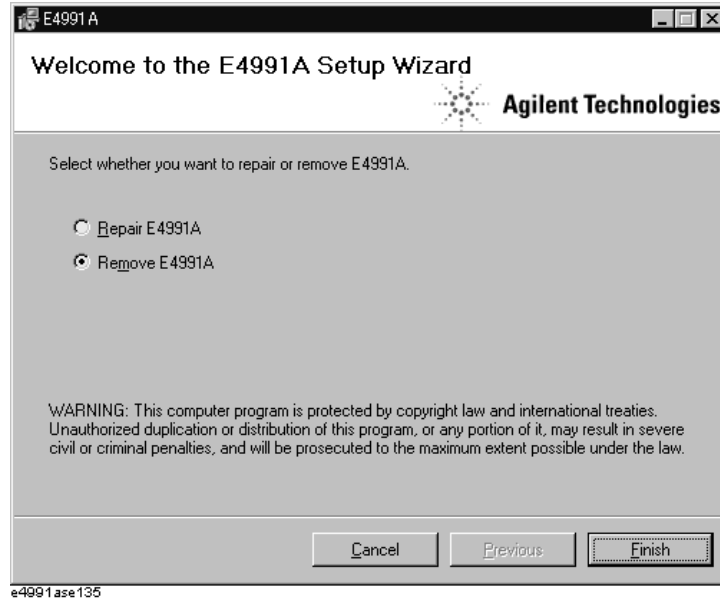
## Agilent E4991A Firmware Update Firmware Update

**Step 7.** Remove the old version of the firmware using the following procedure.

1. Double-Click “**E4991.msi**” icon. The E4991A Setup Wizard(uninstall) will start automatically as shown in Figure 3.
2. Click on the **Remove E4991A** option button on the E4991A Setup Wizard as shown in Figure 3, then click on the **Finish** button.
3. Click on the **Close** to exit the “Installation Complete” window.

**Figure 3**

### E4991A Setup Wizard (uninstall)



**Step 8.** Install the new version of the firmware using the following procedure.

1. Double-Click “**E4991.msi**” icon. The E4991A Setup Wizard will start automatically as shown in Figure 4.
2. Click on the **Next** to continue the firmware installation on the E4991A Setup Wizard as shown in Figure 4.
3. Click on the **Next** to start the firmware installation on “Confirm Installation” window.
4. After the disk1 installation is finished, insert the firmware installation disk2 (2 of 3) into the FDD of the E4991A, then click **OK**.
5. After the disk2 installation is finished, insert the firmware installation disk3 (3 of 3) into the FDD of the E4991A, then click **OK**
6. Click on the **Close** to exit on the “Installation Complete” window.

Figure 4

E4991A Setup Wizard



**Step 9.** Shutdown the E4991A by the following procedure.

1. Click **Start - Shut Down...**
2. Click the **Shut down** button in the **Shut Down Windows** dialog box to select it.
3. Click the **OK** button.

**Step 10.** Turn on the E4991A, and then click **System - About E4991A....** Confirm the firmware revision you have just installed.

Agilent E4991A Firmware Update  
**Firmware Update**