

---

# **D9010BJAC 40GBASE-CR4 and 100GBASE-CR10 Compliance Test Application**

# Notices

© Keysight Technologies 2024

No part of this manual may be reproduced in any form or by any means (including electronic storage and retrieval or translation into a foreign language) without prior agreement and written consent from Keysight Technologies as governed by United States and international copyright laws.

## Software Version

Version 3.20.3.0 or greater

## Edition

April 2024

Available in electronic format only

Keysight Technologies  
1900 Garden of the Gods Road  
Colorado Springs, CO 80907 USA

## Warranty

THE MATERIAL CONTAINED IN THIS DOCUMENT IS PROVIDED "AS IS," AND IS SUBJECT TO BEING CHANGED, WITHOUT NOTICE, IN FUTURE EDITIONS. FURTHER, TO THE MAXIMUM EXTENT PERMITTED BY APPLICABLE LAW, KEYSIGHT DISCLAIMS ALL WARRANTIES, EITHER EXPRESS OR IMPLIED WITH REGARD TO THIS MANUAL AND ANY INFORMATION CONTAINED HEREIN, INCLUDING BUT NOT LIMITED TO THE IMPLIED WARRANTIES OF MERCHANTABILITY AND FITNESS FOR A PARTICULAR PURPOSE. KEYSIGHT SHALL NOT BE LIABLE FOR ERRORS OR FOR INCIDENTAL OR CONSEQUENTIAL DAMAGES IN CONNECTION WITH THE FURNISHING, USE, OR PERFORMANCE OF THIS DOCUMENT OR ANY INFORMATION CONTAINED HEREIN. SHOULD KEYSIGHT AND THE USER HAVE A SEPARATE WRITTEN AGREEMENT WITH WARRANTY TERMS COVERING THE MATERIAL IN THIS DOCUMENT THAT CONFLICT WITH THESE

TERMS, THE WARRANTY TERMS IN THE SEPARATE AGREEMENT WILL CONTROL.

## Technology Licenses

The hardware and/or software described in this document are furnished under a license and may be used or copied only in accordance with the terms of such license.

## U.S. Government Rights

The Software is "commercial computer software," as defined by Federal Acquisition Regulation ("FAR") 2.101. Pursuant to FAR 12.212 and 27.405-3 and Department of Defense FAR Supplement ("DFARS") 227.7202, the U.S. government acquires commercial computer software under the same terms by which the software is customarily provided to the public. Accordingly, Keysight provides the Software to U.S. government customers under its standard commercial license, which is embodied in its End User License Agreement (EULA), a copy of which can be found at <http://www.keysight.com/find/sweula>. The license set forth in the EULA represents the exclusive authority by which the U.S. government may use, modify, distribute, or disclose the Software. The EULA and the license set forth therein, does not require or permit, among other things, that Keysight: (1) Furnish technical information related to commercial computer software or commercial computer software documentation that is not customarily provided to the public; or (2) Relinquish to, or otherwise provide, the government rights in excess of these rights customarily provided to the public to use, modify, reproduce, release, perform, display, or disclose commercial computer software or commercial computer software documentation. No additional government requirements beyond those set forth in the EULA shall apply, except to the extent that those terms, rights, or licenses are explicitly required from all providers of commercial computer software pursuant to the FAR and the DFARS and are set forth specifically in writing elsewhere in the EULA. Keysight shall be under no obligation to update, revise or otherwise modify the Software. With respect to any technical data as defined by FAR 2.101, pursuant to FAR 12.211 and 27.404.2 and DFARS 227.7102, the U.S. government acquires no

greater than Limited Rights as defined in FAR 27.401 or DFAR 227.7103-5 (c), as applicable in any technical data.

## Safety Notices

### CAUTION

A CAUTION notice denotes a hazard. It calls attention to an operating procedure, practice, or the like that, if not correctly performed or adhered to, could result in damage to the product or loss of important data. Do not proceed beyond a CAUTION notice until the indicated conditions are fully understood and met.

### WARNING

A WARNING notice denotes a hazard. It calls attention to an operating procedure, practice, or the like that, if not correctly performed or adhered to, could result in personal injury or death. Do not proceed beyond a WARNING notice until the indicated conditions are fully understood and met.

## 40GBASE-CR4/100GBASE-CR10 Compliance Test Application—At a Glance

The Keysight D9010BJAC 40GBASE-CR4/100GBASE-CR10 Compliance Test Application is an Ethernet test solution that covers the electrical timing parameters for 40GBASE-CR4 and 100GBASE-CR10 specification (IEEE 802.3).

The 40GBASE-CR4/100GBASE-CR10 Compliance Test Application:

- Lets you select individual or multiple tests to run.
- Lets you identify the device being tested and its configuration.
- Shows you how to make oscilloscope connections to the device under test.
- Automatically checks for proper oscilloscope configuration.
- Automatically sets up the oscilloscope for each test.
- Allows you to determine the number of trials for each test.
- Provides detailed information of each test that has been run. The result of maximum 25 worst trials can be displayed at any one time.
- Creates a printable HTML report of the tests that have been run. This report includes pass/fail limits, margin analysis, and screen shots.

### **Required Equipment and Software**

In order to run the 40GBASE-CR4/100GBASE-CR10 automated tests, you need the following equipment and software:

- For the minimum version of Infiniium oscilloscope software, see the D9010BJAC release notes.
- D9010BJAC 40GBASE-CR4/100GBASE-CR10 Compliance Test Application software and license.
- For differential probing (minimum 25 GHz):
  - N2802A 25 GHz InfiniiMax III Series probe amplifier.
  - N2803A 30 GHz InfiniiMax III Series probe amplifier.
  - N2836A InfiniiMax III 26 GHz solder-in probe head.
- For single-ended probing:
  - SMA cables that are able to support the 10 Gb speed.
- Infiniium oscilloscope:
  - DSA-X 90000 Q-Series oscilloscope
  - DSA-X 90000A Series oscilloscope
  - DSO-X 90000 Q-Series oscilloscope
  - DSO-X 90000A Series oscilloscope
  - UXR Series oscilloscope



# Contents

40GBASE-CR4/100GBASE-CR10 Compliance Test Application—At a Glance / 3

## 1 Installing the D9010BJAC Compliance Test Application

Installing the Software / 10

Installing the License Key / 11

Using Keysight License Manager 5 / 11

Using Keysight License Manager 6 / 12

## 2 Preparing to Take Measurements

Calibrating the Oscilloscope / 16

Starting the Compliance Test Application / 17

## 3 Setting Up Switch Matrix

Overview / 20

Enabling Switch Matrix / 21

Establishing Connection to the Switch Drivers / 22

Establishing connection to the Switch Drivers – Automatically / 22

Establishing connection to the Switch Drivers – Manually / 26

Configuring Signal Paths / 30

Configuring Signal Paths with Automatic Selection / 30

Configuring Signal Paths with Manual Selection / 30

Response Correction / 32

## 4 Main Voltage Measurements

Differential Peak-to-Peak Output Voltage Test with TX Disabled / 38

Common Mode Voltage Test / 39

Common Mode AC Output Voltage Test / 40

Amplitude Peak to Peak Output Voltage Test / 41

## 5 Jitter and Data Rate Measurements

Signaling Rate / 46

Jitter (Random Jitter, Duty Cycle Distortion, and Total Jitter) / 47

## 6 Transmitter Output Waveform Measurements

Transmitter DC Amplitude	/ 52
Linear Fit Pulse	/ 53
Abs Coefficient Step Size c(1) inc c(0) hold c(-1) hold	/ 54
Abs Coefficient Step Size c(1) dec c(0) hold c(-1) hold	/ 55
Abs Coefficient Step Size c(1) hold c(0) inc c(-1) hold	/ 56
Abs Coefficient Step Size c(1) hold c(0) dec c(-1) hold	/ 57
Abs Coefficient Step Size c(1) hold c(0) hold c(-1) inc	/ 58
Abs Coefficient Step Size c(1) hold c(0) hold c(-1) dec	/ 59
Minimum Pre-cursor Full-scale Test	/ 60
Minimum Post-cursor Full-scale Test	/ 61

## 7 Return Loss ENA/PNA Measurements

## 8 DME/EEE Waveform Measurements

DME Differential Peak-to-Peak Output Voltage Test	/ 68
DME T1-Transition Position Spacing (Period) Test	/ 69
DME T2-Clock Transition to Clock Transition Test	/ 70
DME T3-Clock Transition to Data Transition Test	/ 71
EEE Differential Peak-to-Peak Output Voltage Test with TX Disabled	/ 72
EEE Differential Peak-to-Peak Output Voltage Test	/ 73
EEE Common Mode Deviation Voltage Test	/ 74

## 9 Debug Mode

## 10 Exporting Measurement Results to Repository

Exporting Measurement Results to Repository	/ 78
KS6800A Series Analytics Service Software	/ 86

## A Calibrating the Infiniium Oscilloscope and Probe

Oscilloscope Internal Calibration	/ 90
Required Equipment for Oscilloscope Calibration	/ 90
Running the Oscilloscope Internal Calibration	/ 91

- Probe Calibration / 95
  - Required Equipment for Probe Calibration / 95
  - Connecting the Probe for Calibration / 95
  - Verifying the Connection / 97
  - Running the Probe Calibration and Deskew / 99
  - Verifying the Probe Calibration / 101

## Index





# 1 Installing the D9010BJAC Compliance Test Application

Installing the Software / 10

Installing the License Key / 11

If you purchased the D9010BJAC 40GBASE-CR4/100GBASE-CR10 Compliance Test Application separate from your Infiniium oscilloscope, you need to install the software and license key.

## Installing the Software

- 1 Make sure you have the minimum version of Infiniium oscilloscope software (see the D9010BJAC release notes) by choosing **Help > About Infiniium...** from the main menu.
- 2 To obtain the D9010BJAC Compliance Test Application, go to Keysight website: <http://www.keysight.com/find/D9010BJAC>
- 3 The link for the D9010BJAC 40GBASE-CR4/100GBASE-CR10 Compliance Test Application will appear. Double-click on it and follow the instructions to download and install the application software.

## Installing the License Key

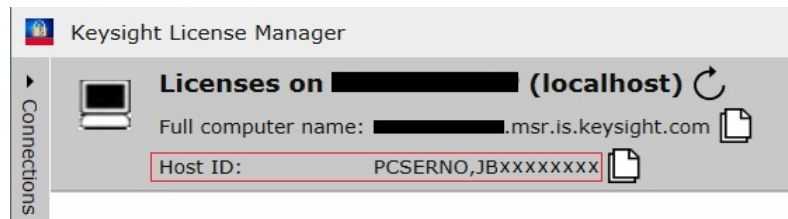
For the list of licenses required to run this application, refer to the Data Sheet.

To procure a license, you require the Host ID information that is displayed in the Keysight License Manager application installed on the same machine where you wish to install the license.

### Using Keysight License Manager 5

To view and copy the Host ID from Keysight License Manager 5:

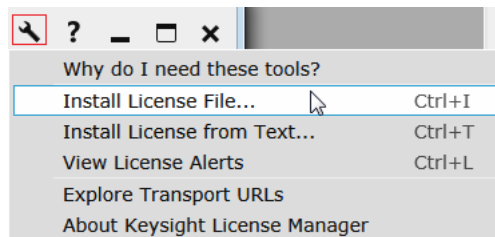
- 1 Launch Keysight License Manager on your machine, where you wish to run the Test Application and its features.
- 2 Copy the Host ID that appears on the top pane of the application. Note that x indicates numeric values.



**Figure 1** Viewing the Host ID information in Keysight License Manager 5

To install one of the procured licenses using Keysight License Manager 5 application,

- 1 Save the license files on the machine, where you wish to run the Test Application and its features.
- 2 Launch Keysight License Manager.
- 3 From the configuration menu, use one of the options to install each license file.



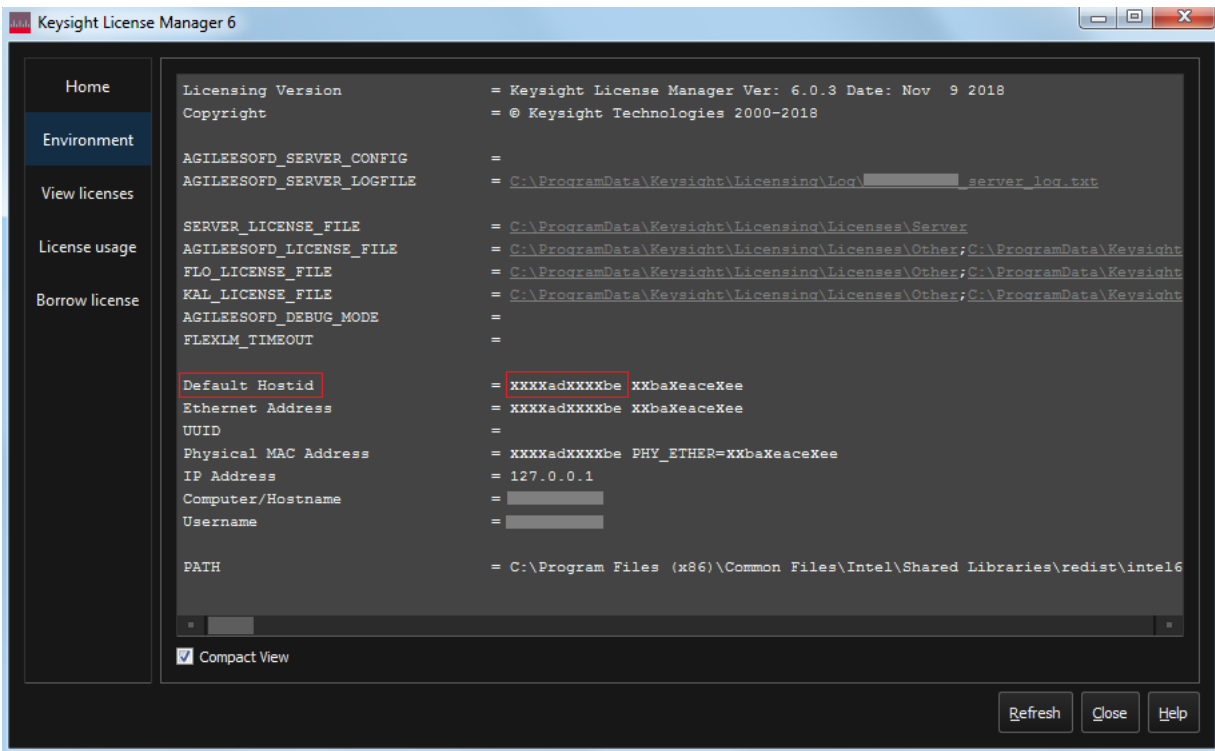
**Figure 2** Configuration menu options to install licenses on Keysight License Manager 5

For more information regarding installation of procured licenses on Keysight License Manager 5, refer to [Keysight License Manager 5 Supporting Documentation](#).

## Using Keysight License Manager 6

To view and copy the Host ID from Keysight License Manager 6:

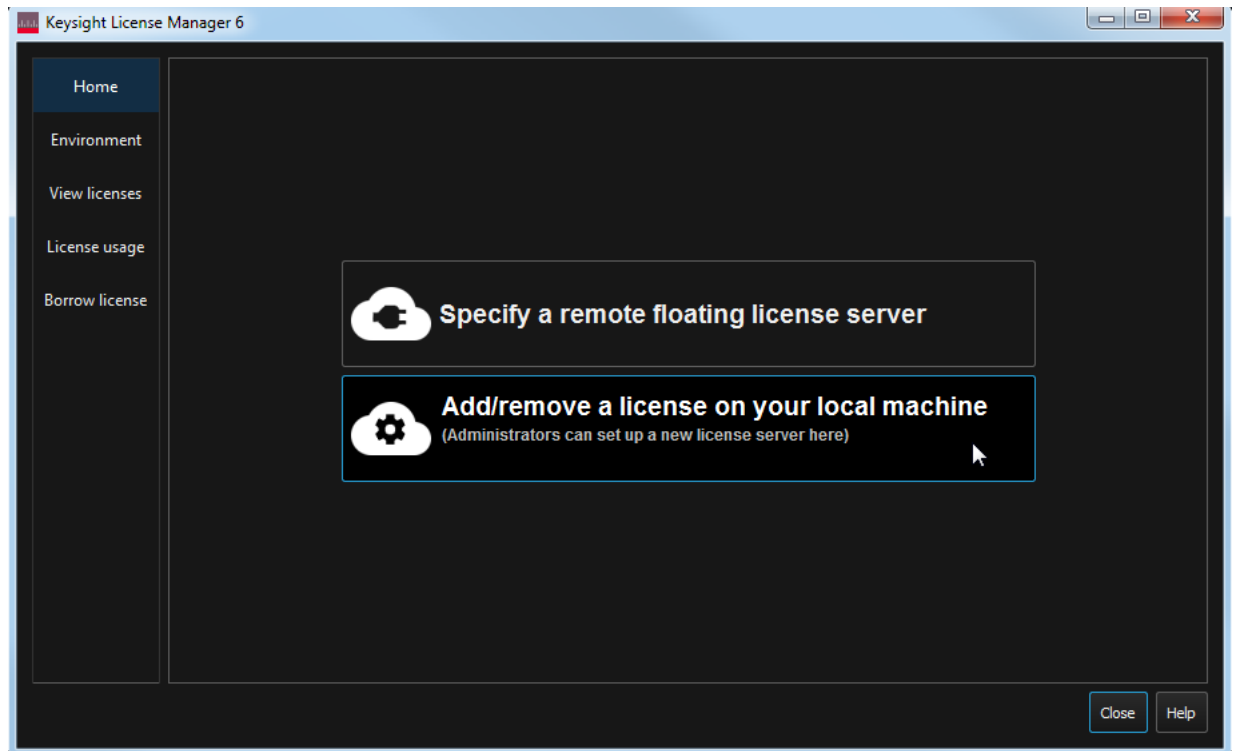
- 1 Launch Keysight License Manager 6 on your machine, where you wish to run the Test Application and its features.
- 2 Copy the Host ID, which is the first set of alphanumeric value (as highlighted in **Figure 3**) that appears in the Environment tab of the application. Note that x indicates numeric values.



**Figure 3** Viewing the Host ID information in Keysight License Manager 6

To install one of the procured licenses using Keysight License Manager 6 application,

- 1 Save the license files on the machine, where you wish to run the Test Application and its features.
- 2 Launch Keysight License Manager 6.
- 3 From the Home tab, use one of the options to install each license file.



**Figure 4** Home menu options to install licenses on Keysight License Manager 6

For more information regarding installation of procured licenses on Keysight License Manager 6, refer to [Keysight License Manager 6 Supporting Documentation](#).

## 1 Installing the D9010BJAC Compliance Test Application

## 2 Preparing to Take Measurements

Calibrating the Oscilloscope / 16

Starting the Compliance Test Application / 17

Before running the automated tests, you should calibrate the oscilloscope and probe. No test fixture is required for this application. After the oscilloscope and probe have been calibrated, you are ready to start the D9010BJAC Compliance Test Application and perform the measurements.

## Calibrating the Oscilloscope

If you haven't already calibrated the oscilloscope, see [Appendix A](#), "Calibrating the Infiniium Oscilloscope and Probe," starting on page 89.

### NOTE

If the ambient temperature changes more than 5 degrees Celsius from the calibration temperature, internal calibration should be performed again. The delta between the calibration temperature and the present operating temperature is shown in the **Utilities > Calibration** menu.

---

### NOTE

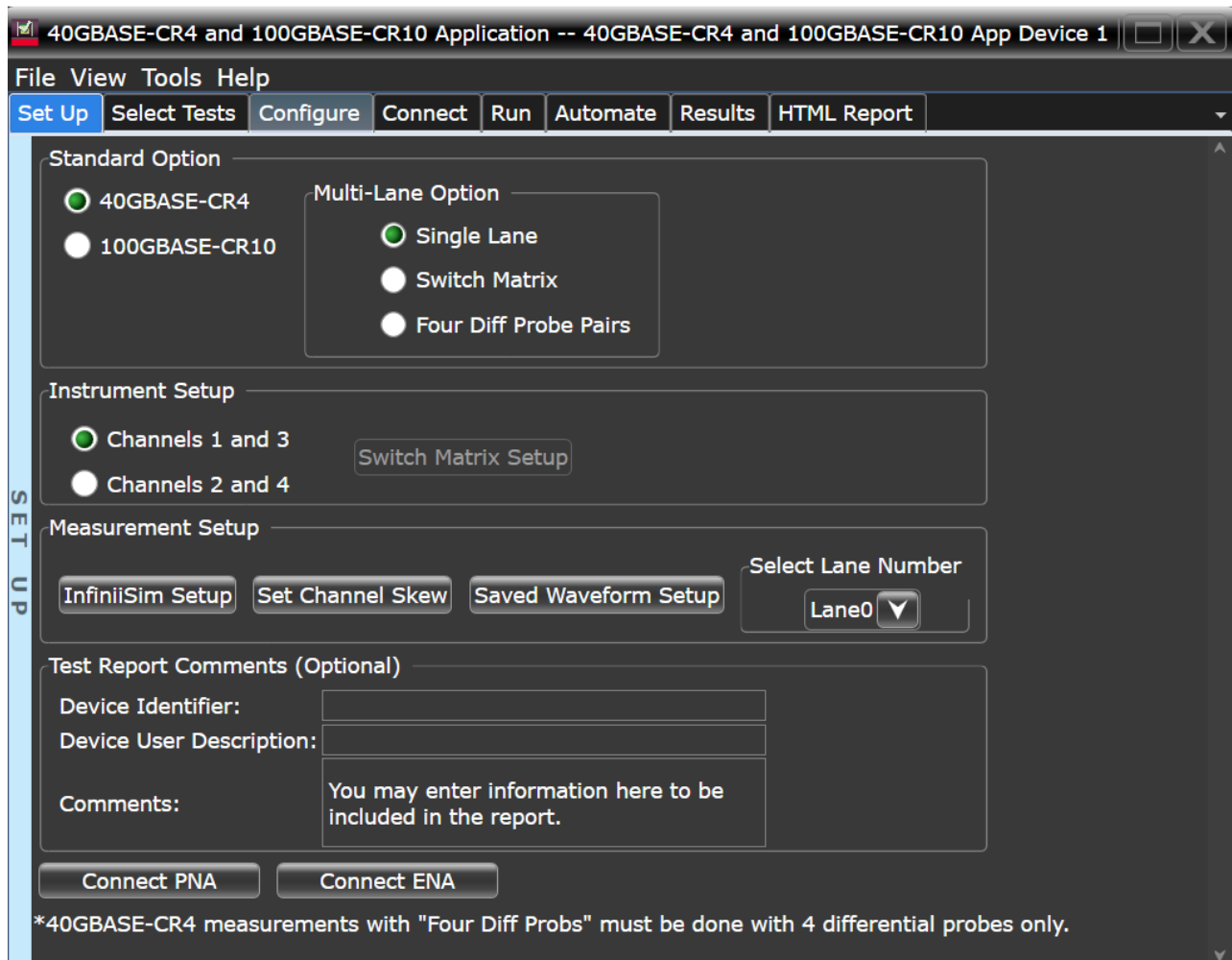
If you switch cables between channels or other oscilloscopes, it is necessary to perform cable and probe calibration again. Keysight recommends that, once calibration is performed, you label the cables with the channel on which they were calibrated.

---



## Starting the Compliance Test Application

- 1 Ensure that the Device Under Test (DUT) is operating and set to desired test modes.
- 2 To start the 40GBASE-CR4/100GBASE-CR10 Compliance Test Application: From the Infiniium oscilloscope's main menu, choose **Analyze > Automated Test Apps > D9010BJAC 40GBASE-CR4 100GBASE-CR10 Test App**.



**Figure 5** D9010BJAC Compliance Test Application Main Window

The tabs in the main pane show the steps you take in running the automated tests:

<p><b>Set Up</b></p>	<p>Lets you identify and set up the test environment, including information about the device under test.</p> <p>The <b>Device Identifier</b>, <b>User Description</b>, and <b>Comments</b> are all printed in the final HTML report.</p> <p>Select the test group to be tested.</p> <p>Set up InfiniiSim with the <b>InfiniiSim Setup</b> button.</p> <p>With the <b>Set Channel skew</b> button, the channels can be visually adjusted and skewed.</p> <p>The <b>Saved Waveform Setup</b> button enables easy setup of saved waveforms. When waveforms are set up, the application will make all measurements on the saved waveforms.</p> <p>The <b>Multi-Lane Option</b> lets you choose to test a single lane, with the switch matrix, or four differential probes (for CR4 only). When switch matrix or four differential probes is selected, the application will automatically switch and test each lane.</p>
<p><b>Select Tests</b></p>	<p>Lets you select the tests you want to run. The tests are organized hierarchically so you can select all tests in a group. After tests are run, status indicators show which tests have passed, failed, or not been run, and there are indicators for the test groups.</p>
<p><b>Configure</b></p>	<p>Lets you configure test parameters (for example, channels used in test, Number of UI to test, scope bandwidth, etc.).</p>
<p><b>Connect</b></p>	<p>Shows you how to connect the oscilloscope to the device under test for the tests that are to be run.</p>
<p><b>Run Tests</b></p>	<p>Starts the automated tests. If the connections to the device under test need to be changed while multiple tests are running, the tests pause, show you how to change the connection, and wait for you to confirm that the connections have been changed before continuing.</p>
<p><b>Automation</b></p>	<p>Lets you construct scripts of commands that drive execution of the application.</p>
<p><b>Results</b></p>	<p>Contains more detailed information about the tests that have been run. You can change the thresholds at which marginal or critical warnings appear.</p>
<p><b>HTML Report</b></p>	<p>Shows a compliance test report that can be printed.</p>

## 3 Setting Up Switch Matrix

Overview / 20

Enabling Switch Matrix / 21

Establishing Connection to the Switch Drivers / 22

Configuring Signal Paths / 30

Response Correction / 32

Tests can run with the switch matrix using four dual single-ended connections or without the switch matrix using four differential probe connections (for CR4 only). Without switch matrix requires the Infiniimax III probe: N2802A or N2803A.

Both options are fully automated to switch across the four lanes. Switch Matrix requires either the Keysight U3020A S26 or the BitifEye BIT2100.

If differential Infiniimax III probes are used, the related (CR4) tests can be run without the switch matrix. The four lanes can be connected to channels 1 through 4.

This chapter describes the switch matrix feature and steps for configuring the switch matrix in the Keysight D9010BJAC 40GBASE-CR4 and 100GBASE-CR10 Compliance Test Application.

## Overview

An Oscilloscope has only four Channels to run tests. The limited number of channels may, at times, limit the testing of some multi-lane standards. Also, it may prove to be a hindrance to run test procedures for multi-port devices or simultaneous testing of multiple devices. The Switch Matrix feature on the Infiniium Oscilloscope overcomes such limitations.

The purpose of the 'Switch Matrix' feature is to ease the testing procedure, make it more feasible and to reduce the overall time. Using this feature, you can connect multiple lanes of the source devices to the correct switches and to obtain an accurate signal path whenever required.

Keysight recommends the following switches to be used with the Test Application:

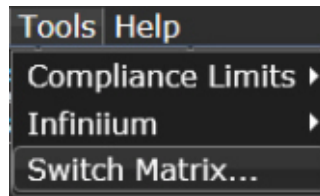
- Keysight U3020A S26
- BitifEye BIT-2100

## Enabling Switch Matrix

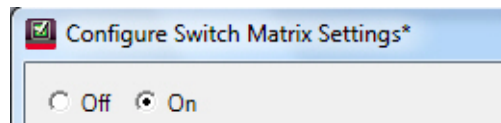
Before you begin the testing of multiple lane pairs of the source devices simultaneously, you must enable the Switch Matrix feature.

To enable the switch matrix feature:

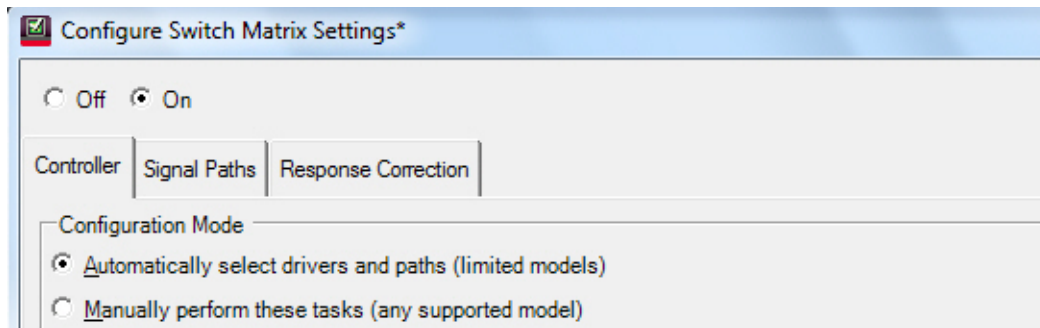
- 1 Click **Tools>Switch Matrix...**



- 2 In the **Configure Switch Matrix Settings** dialog box, click **On** to enable the Switch Matrix feature.



Enabling the Switch Matrix feature also enables the automated switch control. The option **Automatically select drivers and paths (limited models)** in the **Configuration Mode** section of the **Controller** tab is selected by default.

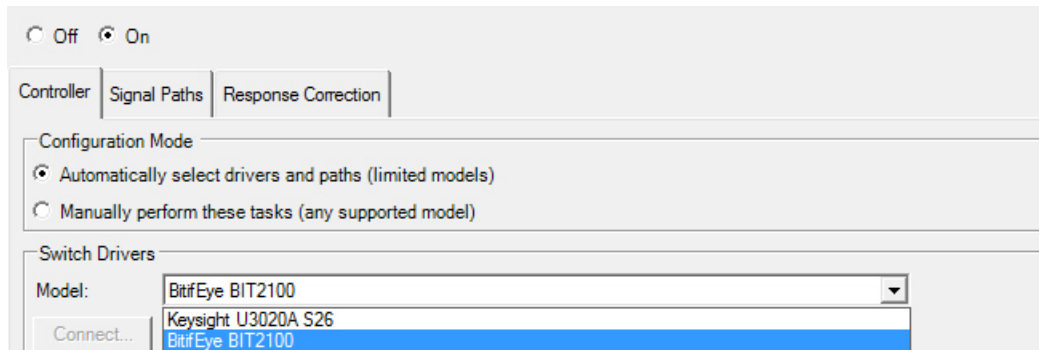


## Establishing Connection to the Switch Drivers

### Establishing connection to the Switch Drivers – Automatically

In the **Configure Switch Matrix Settings** dialog, under the **Controller** tab:

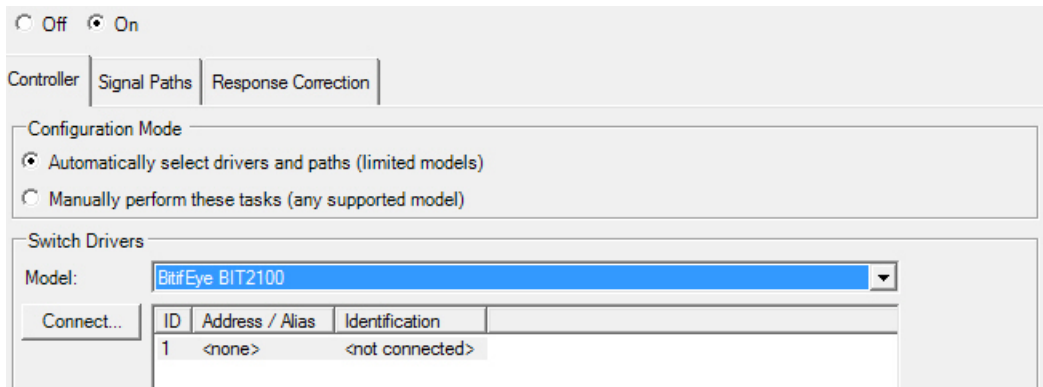
- 1 From the **Switch Drivers** section, select the switch model from the **Model:** drop-down options.



#### NOTE

The switch settings and the response correction for all paths are reset if you toggle between switch models.

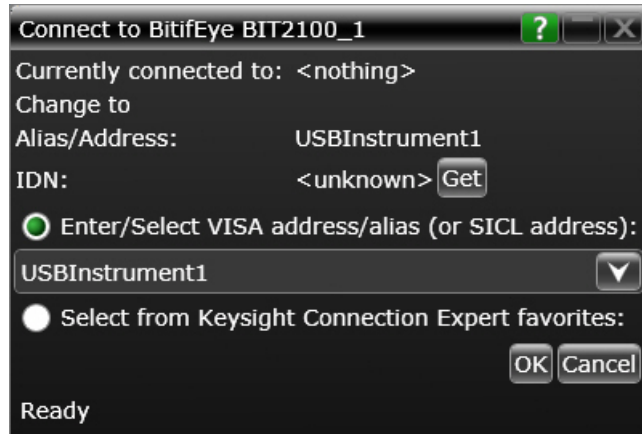
- 2 Click the **Connect** button to be able to connect the selected switch driver to a physical switch instrument.



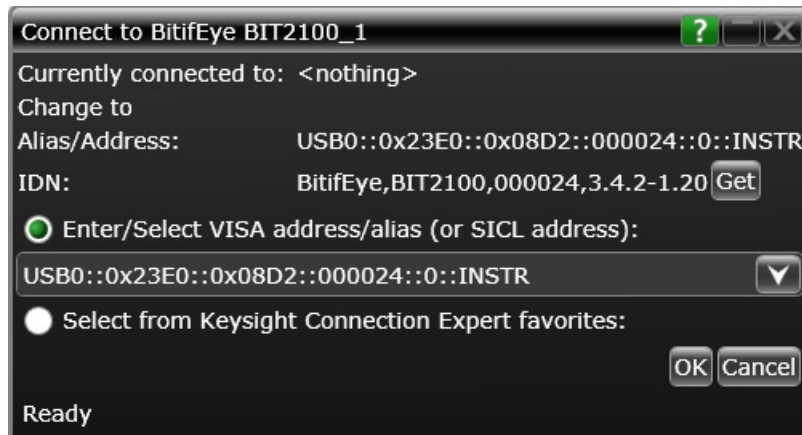
- 3 A **Connect to <switch-model>** dialog appears, which gives you two options to establish a connection to the selected switch models.
- 4 Select one of the options to establish connection:

### Selecting Enter/Select VISA address/alias

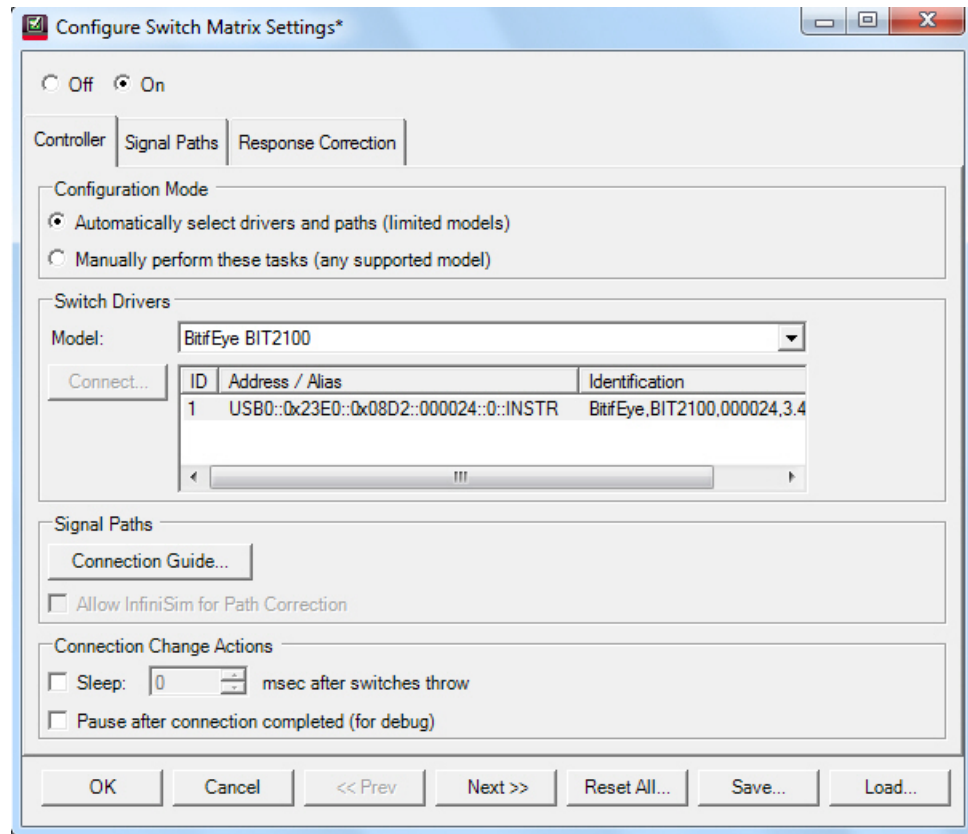
- 1 Select **Enter/Select VISA address/alias** to type the complete SICL or VISA address of the switch driver. By default, this option is selected.



- 2 Click the **Get** button to identify the instrument at the specified address or alias and to view the current status of the instrument that is connected to the switch driver.



- 3 Click **OK** to return to the **Configure Switch Matrix Settings** dialog. The connection to the selected switch is displayed.



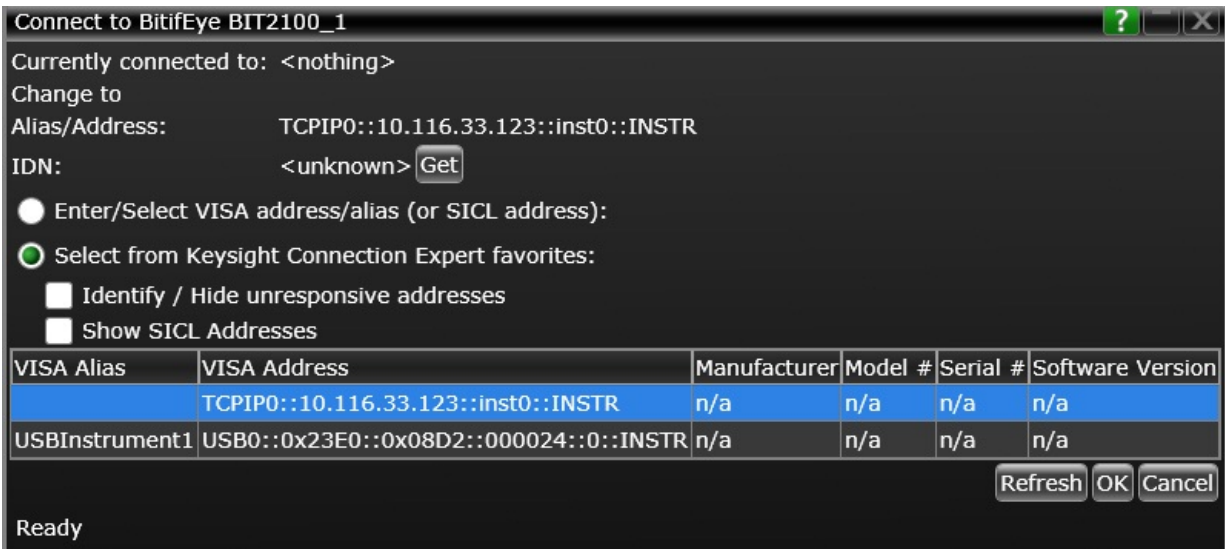
- 4 Click **OK** to save the settings and return to the test environment.

### Selecting from Keysight Connection Expert favorites

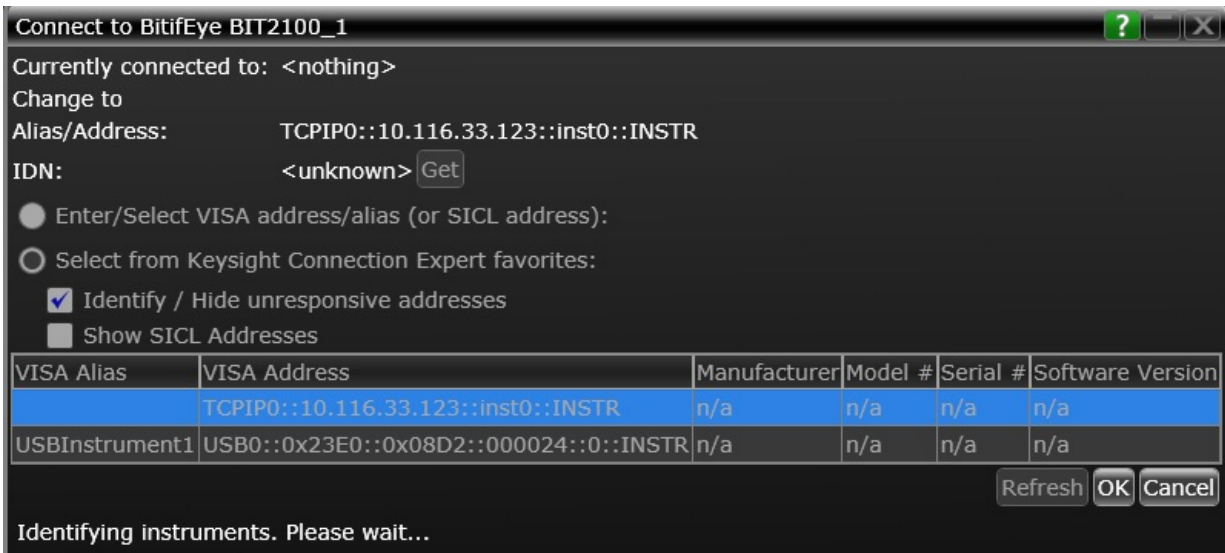
- 1 Choose **Select from Keysight Connection Expert favorites** to control the application with the help of remote PC. Upon selecting this option, the application starts seeking device information from the Keysight Connection Expert.



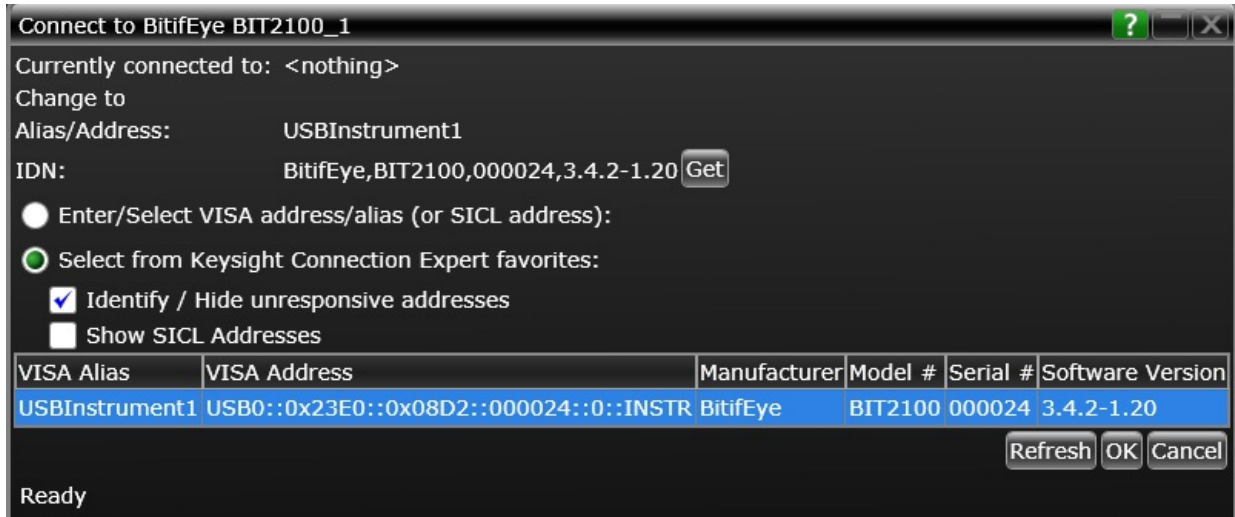
If remote access of the device is enabled, the **Connect to** <switch-model> dialog displays the list of active instruments.



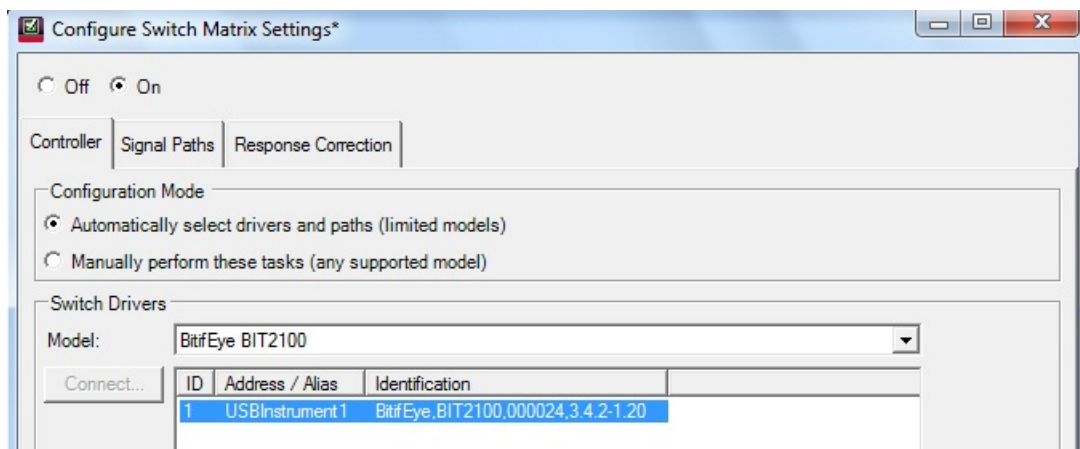
- Click to select the **Identify / Hide unresponsive addresses** check box to run an IDN query to every instrument in the list and search for the active instruments, if any.



- 3 If any active instruments are found, the **Connect to <switch-model>** dialog lists out such instruments. Select the required instrument from the list.



- 4 Click **OK** to return to the **Configure Switch Matrix Settings** dialog. The connection to the selected switch is displayed.



- 5 Click **OK** in the **Configure Switch Matrix Settings** dialog to save the settings and return to the test environment.

**NOTE**

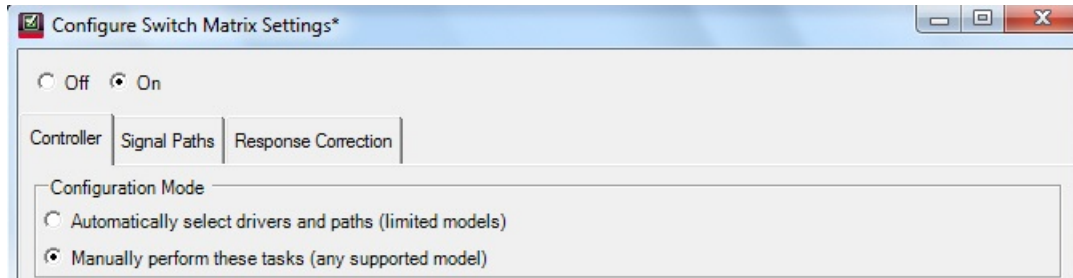
The **Select from Keysight Connection Expert favorites** option is available only when the device is powered on and enabled for remote access.

### Establishing connection to the Switch Drivers – Manually

The **Manually perform these tasks (any supported model)** option allows you to decide how many drivers to use and how to route the signal paths. It enables the use of any supported switch model.

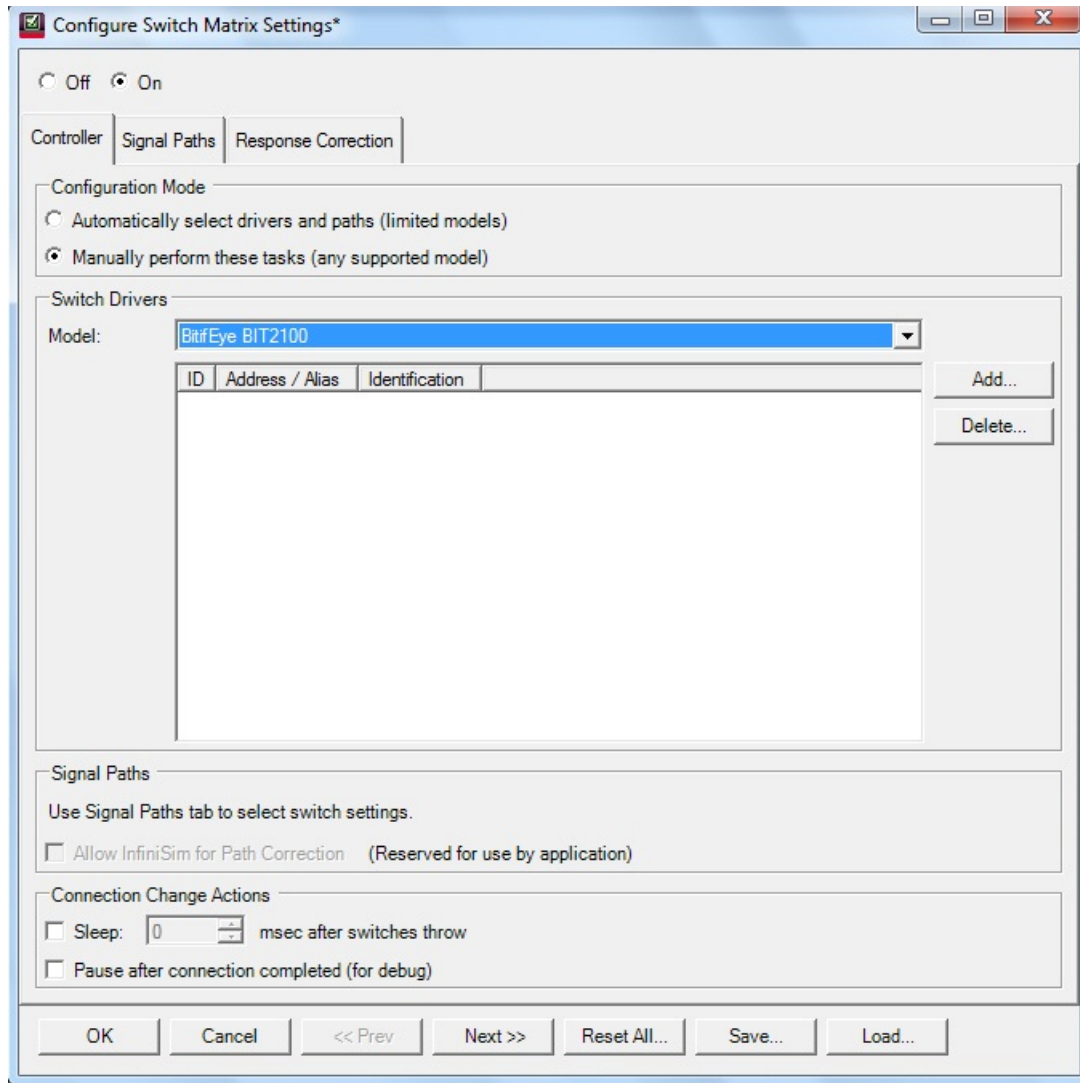
In the **Configure Switch Matrix Settings** dialog:

- 1 Click to select the **Manually perform these tasks (any supported model)** radio button in the **Configuration Mode** section.

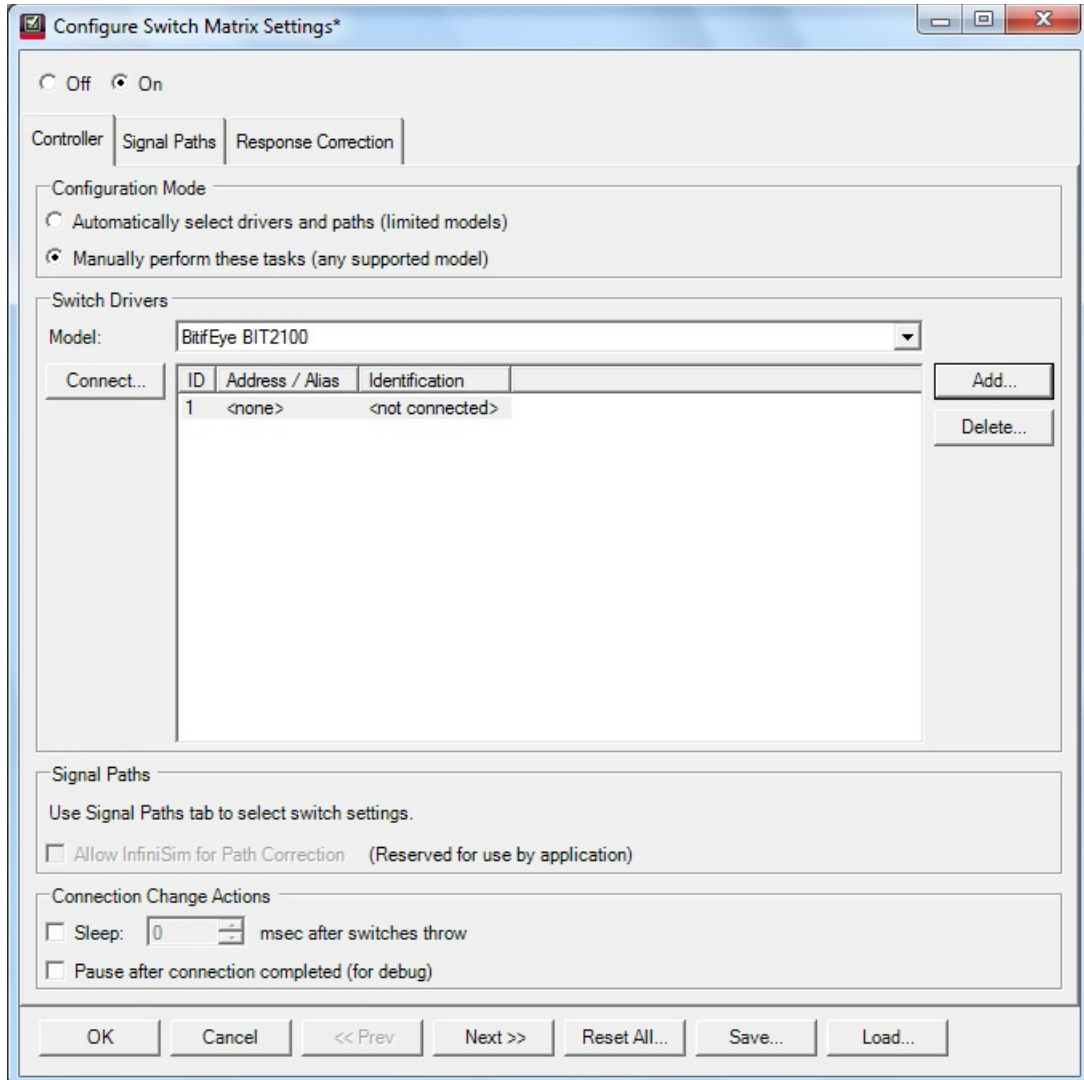


- 2 From the **Switch Drivers** section, select the switch model from the **Model:** drop-down options.
- 3 In the **Switch Drivers** section, you may use the **Add** button to append the list of any additional drivers, which require a connection to an instrument. Use the **Delete** button to remove a selected driver from the list. Removing the driver from the list dissociates any signal paths that may have been assigned to it earlier.

### 3 Setting Up Switch Matrix



- 4 When you click the **Add...** button, the **Connect...** button appears so that you can establish connectivity to the selected Switch.



- 5 The rest of the steps for establishing a connection to the switch model remains the same as described in the previous section. The only difference between automatic and manual modes is that you can add/delete and select switch drivers (any supported model) as per your requirements and preferences in the manual mode.

## Configuring Signal Paths

Once you have enabled the Switch Matrix feature and set up connections to the switch drivers, you must configure signal paths. The options to configure the signal paths vary depending upon whether you have selected **Automatically select drivers and paths (limited models)** or **Manually perform these tasks (any supported model)** in the **Controller** tab of the **Configure Switch Matrix Settings** dialog.

Refer to the connection diagram before configuring signal paths either for Automatic or Manual selection. Under the Controller tab, click the **Connection Guide** button to access the Connection Diagram dialog.

### Configuring Signal Paths with Automatic Selection

When you have selected **Automatically select drivers and paths (limited models)** in the **Controller** tab of the **Configure Switch Matrix Settings** dialog:

- 1 Click the **Signal Paths** tab. The **Path Assignment** table lists the connection matrix of the device with the Switch modules.
- 2 Scroll down to view the automatic connections that have been established.

At runtime, when the Switch Matrix module is on and when a connection prompt occurs, two events occur:

- The framework suppresses the prompts.
- The Switch Matrix module detects the new connection and then throw switches, as indicated in the Switch column, taking into account the current value of the configuration variable (if any) associated with the connection.

### Configuring Signal Paths with Manual Selection

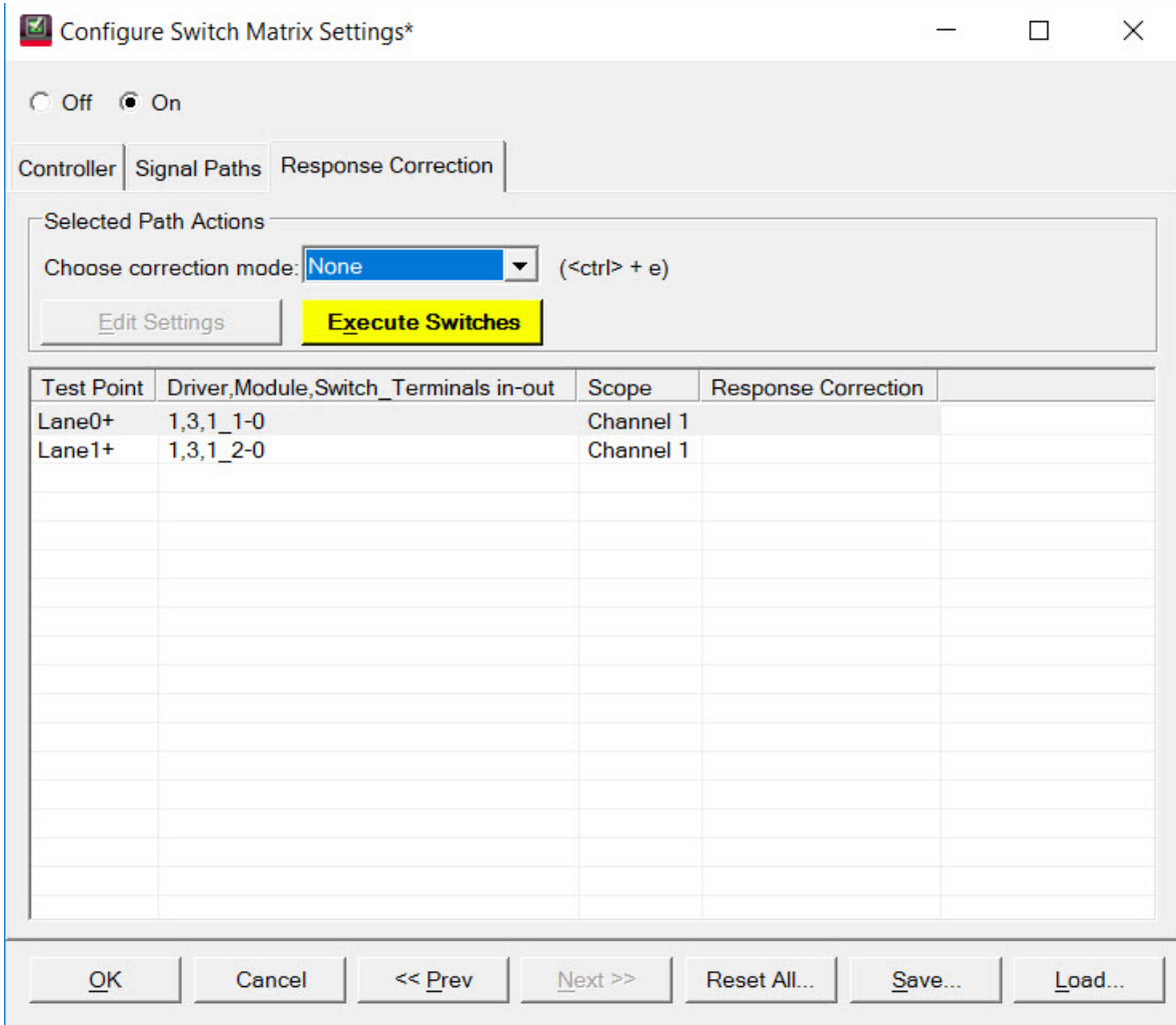
When you have selected **Manually perform these tasks (any supported model)** in the **Controller** tab of the **Configure Switch Matrix Settings** dialog:

- 1 Click the **Signal Paths** tab in the **Configure Switch Matrix Settings** dialog.
- 2 Select the channel or switch module in one of the drop-down options. Manually select the alternative channel or driver module from the other drop-down option.
- 3 Optionally, you may change the lane assignments and the corresponding Switch modules.
- 4 Click the **View Connections...** button to view the signal path mapping, to understand how the signal path maps to the connection diagrams being used by the application.
- 5 The **Signal Paths Connection View** dialog is displayed. Select any one of the available options in the **Connection:** drop-down.

- 6 The **Path Assignment & Response Correction** area displays the connections configured for the corresponding connection diagrams in the **Connection:** drop-down.
- 7 Select an entry in the **Path Assignment & Response Correction** area to view the corresponding test information.
- 8 Click the **Tests...** button to view information about the tests that use the selected connection to perform automated tests.
- 9 Click the **Close** button to exit and return to the **Configure Switch Matrix Settings** dialog to finish the signal path configuration.
- 10 If required, use the **Reset Paths...** button to clear all switch and response correction settings for all paths. Click **OK** if you wish to proceed.
- 11 Also, if needed, use the **Load Preconfigured Settings...** button to set switches for all paths as per the recommended settings. Click **OK** if you wish to proceed.

## Response Correction

You must specify the response correction after you finish configuring the signal paths. Configuring this area is vital as it impacts the measurement accuracy, credibility and performance of the Oscilloscope. The purpose of response correction is to correct the channel frequency response of the oscilloscope.



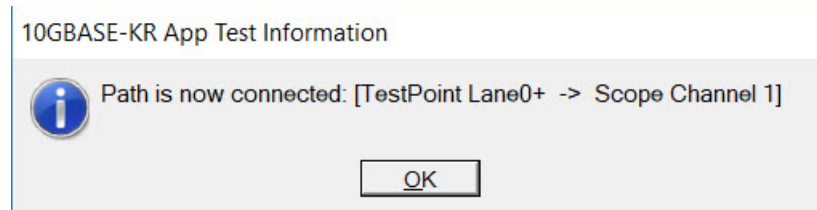
For each scope channel that you select, the default response correction method is None, which turns off normalization for the specified path.

You may use the **Edit Settings** button or double-click the selected row to access the corresponding configuration dialog, if you wish to make further changes to a specific scope channel configuration.

Use the **Execute Switches** button to establish a connection between the selected test point and scope channel. The color of this button corresponds to the Oscilloscope Channel where the Switch is connected to.



In the following example, the application displays the prompt indicating that a connection is established when you click **Execute Switches** after selecting the first row. Click **OK** to close the prompt.



Once you have finished response corrections for all connections, click **OK** in the **Configure Switch Matrix Settings** dialog. The application redirects you to the test environment.

### 3 Setting Up Switch Matrix

## 4 Main Voltage Measurements

Differential Peak-to-Peak Output Voltage Test with TX Disabled / 38

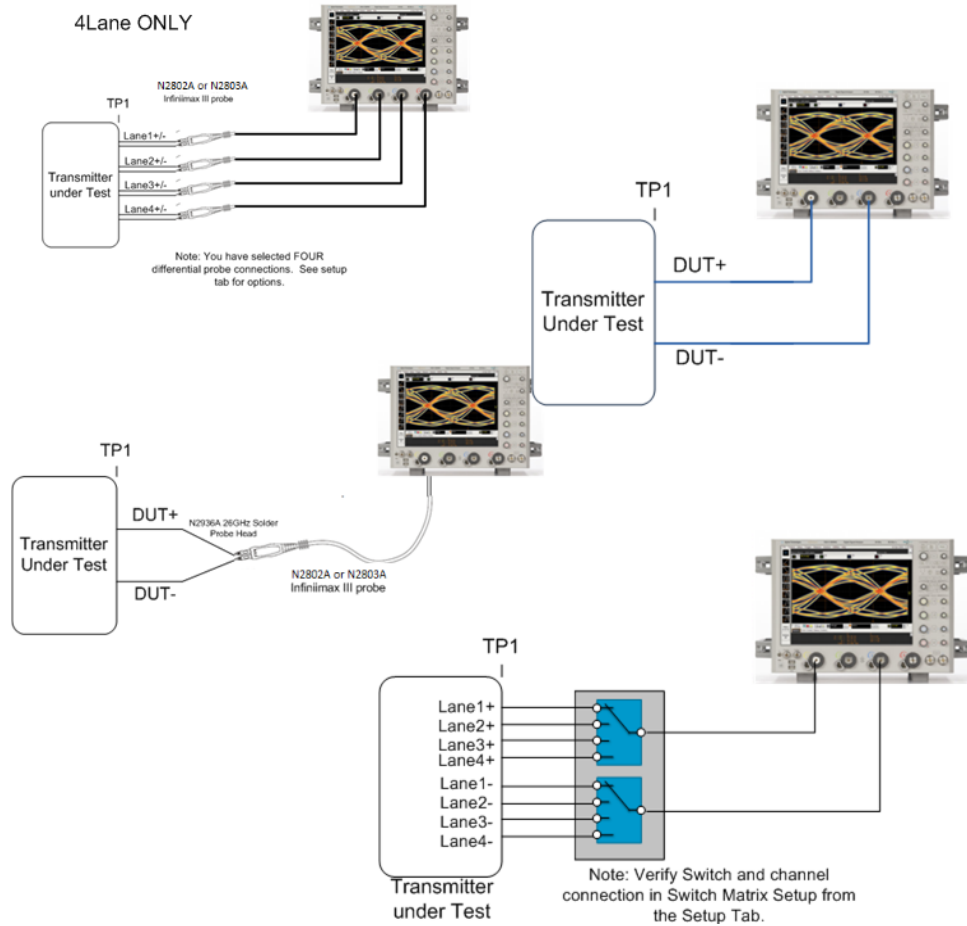
Common Mode Voltage Test / 39

Common Mode AC Output Voltage Test / 40

Amplitude Peak to Peak Output Voltage Test / 41

This section provides the Methods of Implementation (MOIs) for the 40GBASE-CR4 and 100GBASE-CR10 Main Voltage Measurements using a Keysight Infiniium oscilloscope and the D9010BJAC Compliance Test Application.

Probing and Connection for the Bus Signal Level Tests

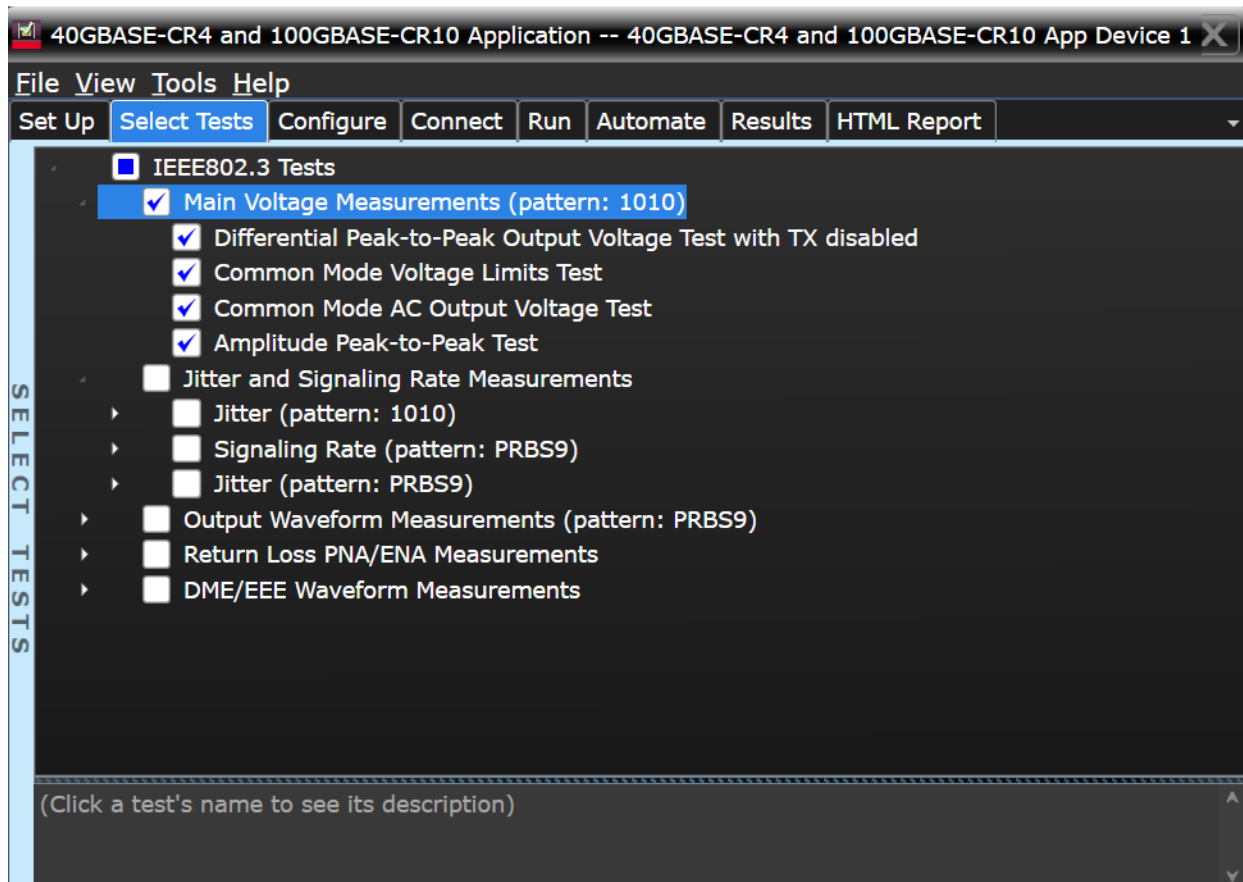


**Figure 6** Probing for Main Voltage Measurements

You can use any of the oscilloscope channels as the signal source channel. Select lane options in the **Setup** tab. You can identify the channels used for the measurement signal in the **Configuration** tab of the Compliance Test Application. (The channels shown in the previous figure are just an example.)

- Test Procedure**
- 1 Start the automated test application as described in "**Starting the Compliance Test Application**" on page 17.
  - 2 Connect the probes to the signals on the DUT.
  - 3 Connect the oscilloscope probes or cables to the channel(s) of the oscilloscope that you have set up in the **Configuration** tab.
  - 4 In the Test application, click on the **Set Up** tab. Select **Measurement Option**, **Lane Option**, and **Channels**.
  - 5 Set up switch matrix (if used) by clicking the **Switch Matrix Setup** button.
  - 6 Set up InfiniiSim if needed.

- 7 Type in or select the **Device Identifier** as well as the **User Description** from the drop-down list. Enter your comments in the **Comments** text box.
- 8 Click the **Select Tests** tab and check the tests you want to run. Check the parent node or group to check all the available tests within the group.



**Figure 7** Selecting Main Voltage Measurement Tests

- Main Voltage Specifications** The 40GBASE-CR4 and 100GBASE0CR10 specifications can be found in IEEE 802.3 section 85.8.3.
- Differential Peak to Peak Output Voltage with TX disabled (max 30 mV).
  - Common Mode Voltage (0-1.9 V).
  - Common Mode AC Output Voltage (max 30 mV).
  - Amplitude Peak to Peak Output Voltage (max 1200 mV).

## Differential Peak-to-Peak Output Voltage Test with TX Disabled

The purpose of this test is to verify that when TX is disabled the peak-to-peak voltage is less than 30 mV.

**PASS Condition** The max peak-to-peak voltage is less than 30 mV.

- Measurement Algorithm**
- 1** Obtain sample or acquire signal data.
  - 2** Check that signal is truly with TX disabled (no valid data transitions).
  - 3** Measure peak-to-peak voltage of the signal.
  - 4** Compare the max peak-to-peak voltage to 30 mV.

## Common Mode Voltage Test

The purpose of this test is to verify that the common mode signal of the differential pair is between 0-1.9 V.

**NOTE**

This measurement can be done only with dual-single ended connection; it cannot be done with a differential probing connection.

---

**PASS Condition** The signal is between 0-1.9 V.

**Measurement Algorithm**

- 1 Obtain sample or acquire signal data.
- 2 Verify that there is a signal and that the connection is dual-single ended.
- 3 Measure the peak-to-peak voltage of the addition of the channel 1 and 3 or channel 2 and 4.
- 4 Compare the voltage measurement to 0-1.9 V.

## Common Mode AC Output Voltage Test

The purpose of this test is to verify that the common mode signal of the differential pair rms voltage does not exceed 30 mV.

**NOTE**

This measurement can be done only with dual-single ended connection; it cannot be done with a differential probing connection.

---

**PASS Condition** The signal is less than 30 mV.

**Measurement Algorithm**

- 1 Obtain sample or acquire signal data.
- 2 Verify that there is a signal and that the connection is dual-single ended.
- 3 Measure the peak-to-peak voltage of the addition of the channel 1 and 3 or channel 2 and 4.
- 4 Compare the voltage measurement to 30 mV.



## Amplitude Peak to Peak Output Voltage Test

The purpose of this test is to verify that the peak-to-peak voltage of the differential signal on a 1010 pattern is less than 1200 mV.

**PASS Condition** The differential signal max peak-to-peak voltage on a 1010 pattern is less than 1200 mV.

- Measurement Algorithm**
- 1 Obtain sample or acquire signal data.
  - 2 Verify that there is a signal connected and has a 1010 pattern.
  - 3 Measure the peak-to-peak voltage of the differential signal of DUT+ and DUT-.
  - 4 Compare the max peak-to-peak voltage to 1200 mV.

## 4 Main Voltage Measurements

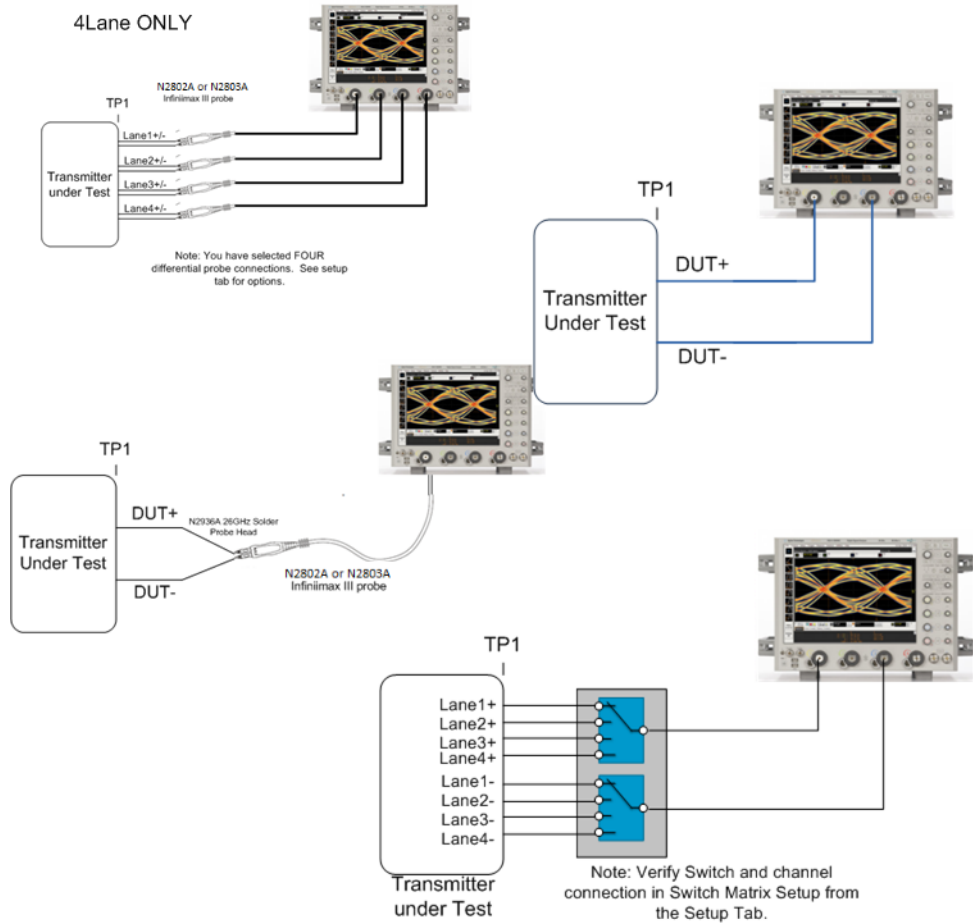
# 5 Jitter and Data Rate Measurements

Signaling Rate / 46

Jitter (Random Jitter, Duty Cycle Distortion, and Total Jitter) / 47

This section provides the Methods of Implementation (MOIs) for the Jitter and Data Rate Measurements using a Keysight Infiniium oscilloscope and the D9010BJAC 40GBASE-CR4 and 100GBASE-CR10 Compliance Test Application.

Probing and Connection for the Bus Signal Level Tests

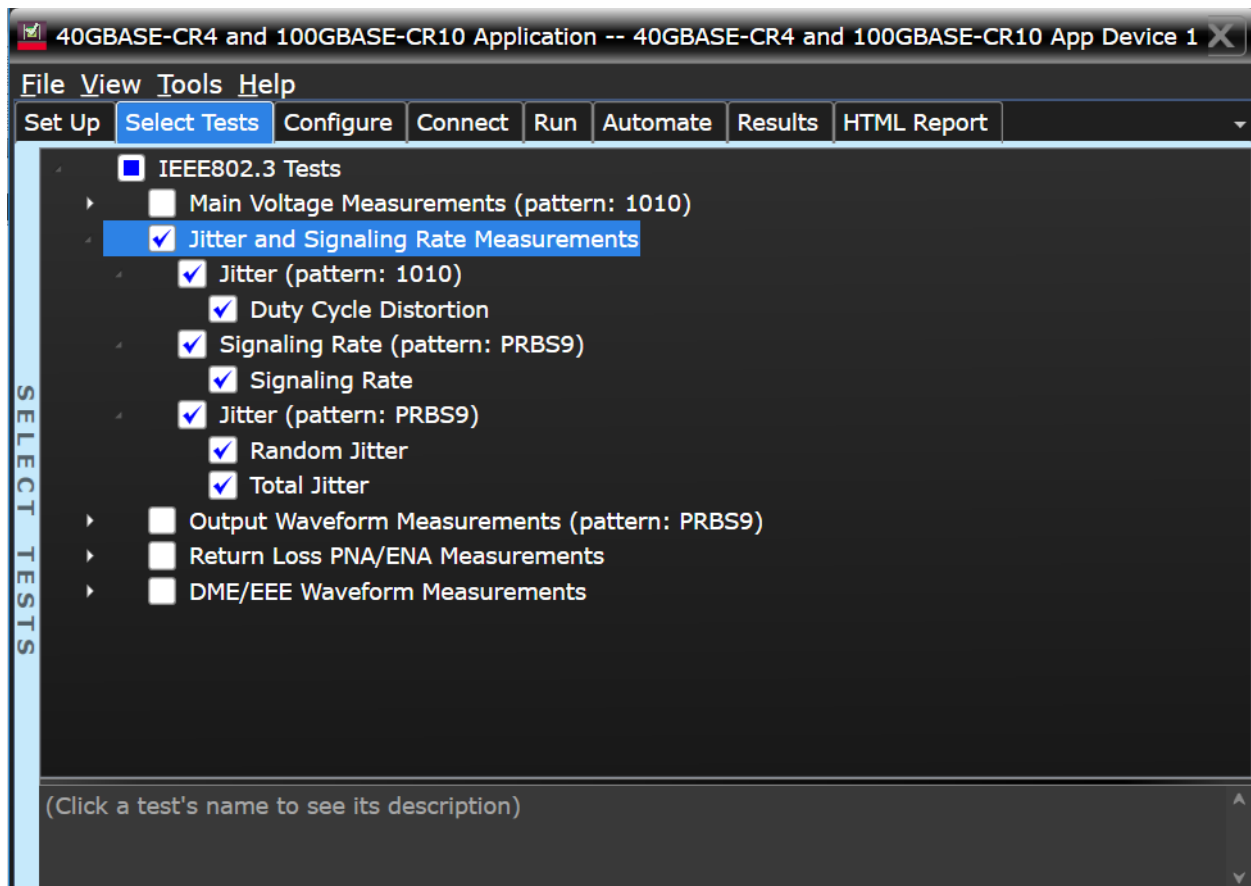


**Figure 8** Probing for Jitter and Data Rate Measurements

You can use any of the oscilloscope channels as the signal source channel. You can identify the channels used for the measurement signal in the **Configuration** tab of the Compliance Test Application. (The channels shown in the previous figure are just an example.)

- Test Procedure**
- 1 Start the automated test application as described in "**Starting the Compliance Test Application**" on page 17.
  - 2 Connect the probes to the signals on the DUT.
  - 3 Connect the oscilloscope probes or cables to the channel(s) of the oscilloscope that you have set up in the **Configuration** tab.
  - 4 In the Test application, click on the **Set Up** tab. Select **Measurement Option**, **Lane Option**, and **Channels**.
  - 5 Set up switch matrix (if used) by clicking the **Switch Matrix Setup** button.
  - 6 Set up InfiniiSim if needed.

- 7 Type in or select the **Device Identifier** as well as the **User Description** from the drop-down list. Enter your comments in the **Comments** text box.
- 8 Click the **Select Tests** tab and check the tests you want to run. Check the parent node or group to check all the available tests within the group.



**Figure 9** Selecting Jitter and Data Rate Tests

#### Transmitter Output Waveform Specifications

The 40GBASE-CR4 and 100GBASE-CR10 specifications can be found in IEEE 802.3 section 85.8.3.

- Signaling Rate ( $10.3125 \pm 100$  ppm GBd).
- Max output jitter (max peak-to-peak).
  - Random Jitter (max 150 mUI).
  - Duty Cycle Distortion (max 35 mUI).
  - Total Jitter (max 250 mUI).

## Signaling Rate

The purpose of this test is to verify that the data rate mean is between  $10.3125 \pm 100$  ppm.

**PASS Condition** The mean data rate is between  $10.3125 \pm 100$  ppm.

- Measurement Algorithm**
- 1** Obtain sample or acquire signal data.
  - 2** Check that signal is connected and data pattern exists (PRBS9 must be used for this test).
  - 3** Set memory depth to capture the number or UI set in the configuration tab.
  - 4** Set data rate measurement to semi-automatic 10.3125 Gb/s.
  - 5** Measure min, max, mean data rate.
  - 6** Report min and max values.
  - 7** Compare and report the mean data rate value to  $10.3125 \pm 100$  ppm GBd.

## Jitter (Random Jitter, Duty Cycle Distortion, and Total Jitter)

The purpose of this test is to verify that differential signal's Random Jitter is less than 150 mUI, Duty Cycle Distortion is less than 35 mUI, and Total Jitter is less than 250 mUI. If all tests are selected, all tests are run on a single measurement. Each test can be run individually by selecting any or some of the tests.

- PASS Conditions**
- Random Jitter rms is less than 150 mUI.
  - Duty Cycle Distortion is less than 35 mUI.
  - Total Jitter at BER of  $10E-12$  is less than 250 mUI.

- Measurement Algorithm**
- 1 Obtain sample or acquire signal data.
  - 2 Check that the signal is connected and data pattern exists (PRBS9 must be used for Random Jitter and Total Jitter tests. For Duty Cycle Distortion test, pattern 1010 must be used).
  - 3 Set memory depth to capture the number of UI set in the configuration tab.
  - 4 Set clock recovery to OJTF First Order PLL with Nominal Data Rate 10.3125 Gb/s and Loop Bandwidth to 4 MHz.
  - 5 Using EZJIT, measure Random Jitter, Deterministic Jitter, Duty Cycle Distortion, and Total Jitter at BER of  $10E-12$ .
  - 6 Compare and report the values to their respective maximum specification.





# 6 Transmitter Output Waveform Measurements

Transmitter DC Amplitude / 52

Linear Fit Pulse / 53

Abs Coefficient Step Size c(1) inc c(0) hold c(-1) hold / 54

Abs Coefficient Step Size c(1) dec c(0) hold c(-1) hold / 55

Abs Coefficient Step Size c(1) hold c(0) inc c(-1) hold / 56

Abs Coefficient Step Size c(1) hold c(0) dec c(-1) hold / 57

Abs Coefficient Step Size c(1) hold c(0) hold c(-1) inc / 58

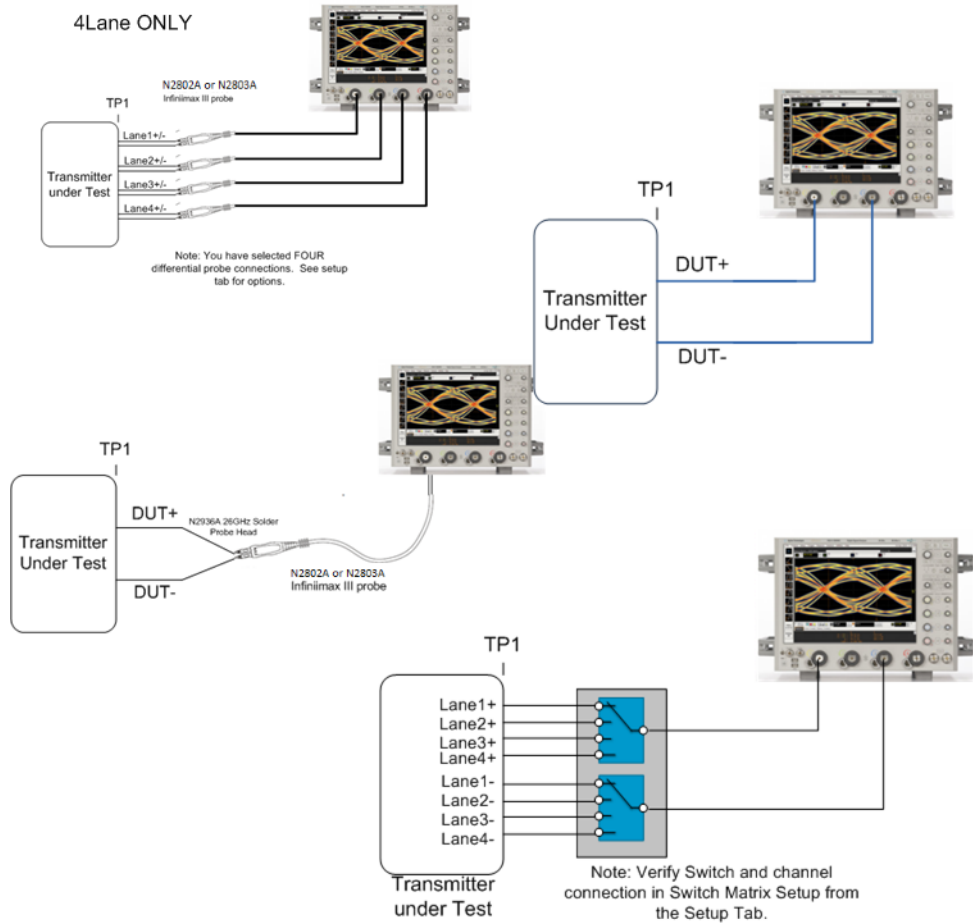
Abs Coefficient Step Size c(1) hold c(0) hold c(-1) dec / 59

Minimum Pre-cursor Full-scale Test / 60

Minimum Post-cursor Full-scale Test / 61

This section provides the Methods of Implementation (MOIs) for the Transmitter Output Waveform Measurements for Transition Time using a Keysight Infiniium oscilloscope and the D9010BJAC 40GBASE-CR4 and 100GBASE-CR10 Compliance Test Application.

Probing and Connection for the Bus Signal Level Tests

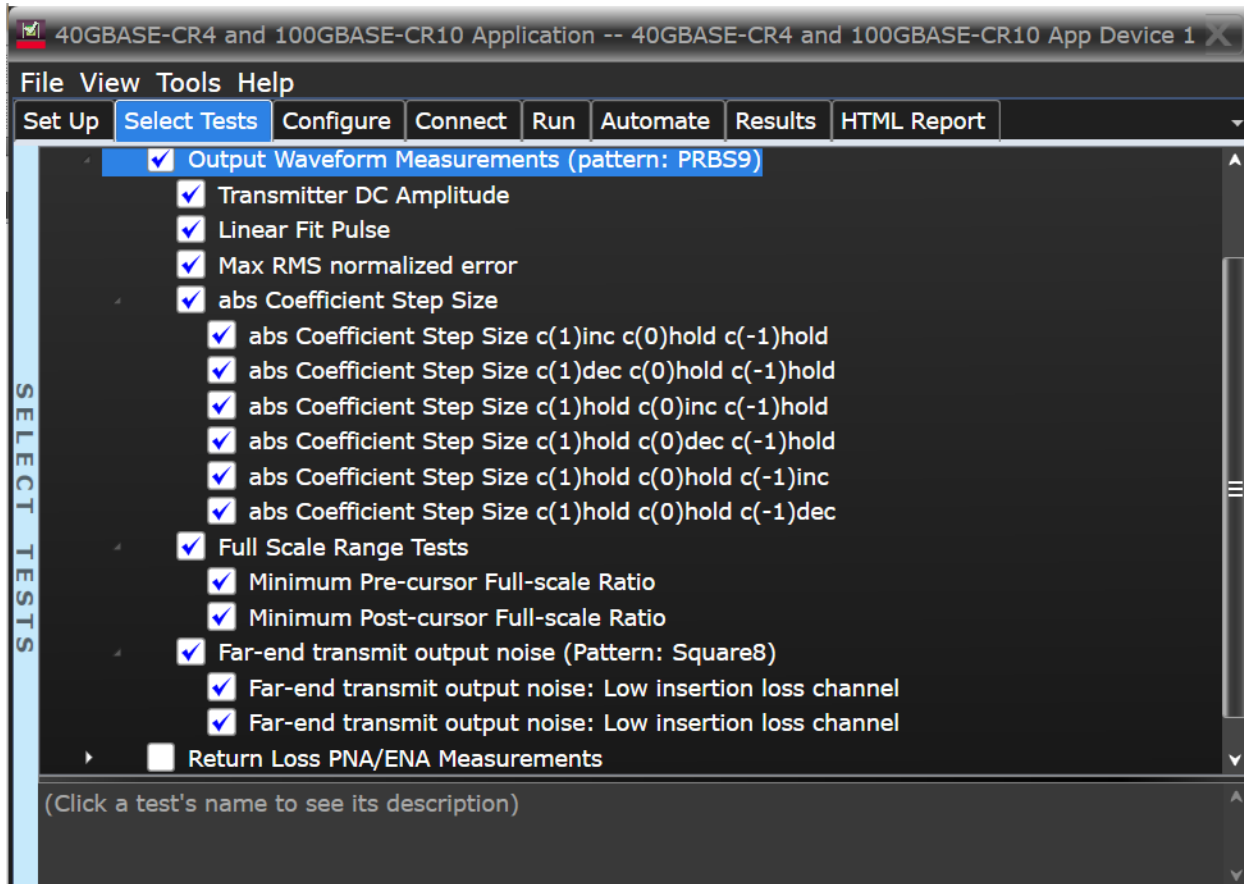


**Figure 10** Probing for Transmitter Output Waveform Measurements

You can use any of the oscilloscope channels as the signal source channel. You can identify the channels used for the measurement signal in the **Configuration** tab of the Compliance Test Application. (The channels shown in the previous figure are just an example.)

- Test Procedure**
- 1 Start the automated test application as described in "**Starting the Compliance Test Application**" on page 17.
  - 2 Connect the probes to the signals on the DUT.
  - 3 Connect the oscilloscope probes or cables to the channel(s) of the oscilloscope that you have set up in the **Configuration** tab.
  - 4 In the Test application, click on the **Set Up** tab. Select **Measurement Option**, **Lane Option**, and **Channels**.
  - 5 Set up switch matrix (if used) by clicking the **Switch Matrix Setup** button.
  - 6 Set up InfiniiSim if needed.

- 7 Type in or select the **Device Identifier** as well as the **User Description** from the drop-down list. Enter your comments in the **Comments** text box.
- 8 Click the **Select Tests** tab and check the tests you want to run. Check the parent node or group to check all the available tests within the group.



**Figure 11** Selecting Transmitter Output Waveform Test

**Transmitter Output Specifications** The 40GBASE-CR4 and 100GBASE-CR10 specifications can be found in IEEE 802.3 section 85.8.3.

## Transmitter DC Amplitude

The purpose of this test is to verify that the Transmitter DC Amplitude as described in section 85.8.3.3 is between 0.34 and 0.6 V.

**PASS Condition** The Transmitter DC Amplitude is between 0.34 and 0.6 V.

- Measurement Algorithm**
- 1** Check that signal is connected and the proper data pattern exists (PRBS9 is required for this test).
  - 2** Set the memory depth and sample rate to capture the 511 bits of the PRBS9 pattern for  $M = N_p + 1$  points per bit.
  - 3** Calculate Transmitter DC amplitude using the equations in section 85.8.3.3.5. The result value is the sum of the columns of P1 (Equ 85-9).
  - 4** Compare and report the result to 0.34-0.6 V.

## Linear Fit Pulse

The purpose of this test is to verify that the Linear Fit Pulse as described in section 85.8.3.3 is greater than the Transmitter DC Amplitude \* 0.63.

**PASS Condition** The Linear Fit Pulse is greater than Transmitter DC Amplitude \* 0.63.

- Measurement Algorithm**
- 1 Check that signal is connected and the proper data pattern exists (PRBS9 is required for this test).
  - 2 Set the memory depth and sample rate to capture the 511 bits of the PRBS9 pattern for  $M = N_p + 1$  points per bit.
  - 3 Calculate Linear Fit Pulse using the equations in section 85.8.3.3.5. The result value read column wise from P1 (Equ 85-9).
  - 4 Compare and report the result to  $0.63 * \text{Transmitter DC Amplitude}$ .

Abs Coefficient Step Size  $c(1)$  inc  $c(0)$  hold  $c(-1)$  hold

The purpose of this test is to verify that the difference amplitude between coefficient updates falls between the specified values 0.0083 and 0.05.

**PASS Condition** The difference in the coefficient update when  $c(1)$  is incremented to the previous is within 0.0083 to 0.05.

- Measurement Algorithm**
- 1 Obtain sample or acquire signal data.
  - 2 Check that the signal is connected and data pattern exists (PRBS9 pattern).
  - 3 Set memory depth to capture the number or UI set in the configuration tab.
  - 4 Request that DUT be initialized.
  - 5 Measure top/base amplitude (Amplitude1).
  - 6 Save result from step 5.
  - 7 Pop up to ask user to Increment  $c(1)$ . OK pressed.
  - 8 Measure top/base amplitude (Amplitude2).
  - 9 Subtract Amplitude2 – Amplitude1.
  - 10 Compare and report the values from step 9 to be in a range of 0.0083 to 0.05.

Abs Coefficient Step Size  $c(1)$  dec  $c(0)$  hold  $c(-1)$  hold

The purpose of this test is to verify that the difference in amplitude between the coefficient updates, falls between the specified values of -0.0083 to -0.05.

**PASS Condition** The difference in the coefficient update when  $c(1)$  is decremented to the previous is within -0.0083 to -0.05.

**Measurement  
Algorithm**

- 1 Obtain sample or acquire signal data.
- 2 Check that the signal is connected and data pattern exists (PRBS9 pattern).
- 3 Set memory depth to capture the number or UI set in the configuration tab.
- 4 If previous abs test has not been run, request that DUT be initialized, else do nothing.
- 5 If previous abs test has not been run, measure top/base amplitude (Amplitude1), else Amplitude1 is equal to value of previous test Amplitude2.
- 6 Save result from step 5.
- 7 Pop up to ask user to Decrement  $c(1)$ . OK pressed.
- 8 Measure top/base amplitude (Amplitude2).
- 9 Subtract Amplitude2 – Amplitude1.
- 10 Compare and report the values from step 9 to be in a range of -0.0083 to -0.05.

Abs Coefficient Step Size  $c(1)$  hold  $c(0)$  inc  $c(-1)$  hold

The purpose of this test is to verify that the difference in amplitude between the coefficient updates falls between the specified values of 0.0083 to 0.05.

**PASS Condition** The difference in the coefficient update when  $c(0)$  is incremented to the previous state is within 0.0083 to 0.05.

- Measurement Algorithm**
- 1 Obtain sample or acquire signal data.
  - 2 Check that the signal is connected and data pattern exists (PRBS9 pattern).
  - 3 Set memory depth to capture the number or UI set in the configuration tab.
  - 4 If previous abs test has not been run, request that DUT be initialized, else do nothing.
  - 5 If previous abs test has not been run, measure top/base amplitude (Amplitude1), else Amplitude1 is equal to value of previous test Amplitude2.
  - 6 Save result from step 5.
  - 7 Pop up to ask user to Increment  $c(0)$ . OK pressed.
  - 8 Measure top/base amplitude (Amplitude2).
  - 9 Subtract Amplitude2 – Amplitude1.
  - 10 Compare and report the values from step 9 to be in a range of 0.0083 to 0.05.



## Abs Coefficient Step Size c(1) hold c(0) dec c(-1) hold

The purpose of this test is to verify that the difference in amplitude between the coefficient updates falls between the specified values of -0.0083 to -0.05.

**PASS Condition** The difference in the coefficient update when c(0) is decremented to the previous state is within -0.0083 and -0.05.

**Measurement  
Algorithm**

- 1 Obtain sample or acquire signal data.
- 2 Check that the signal is connected and data pattern exists (PRBS9 pattern).
- 3 Set memory depth to capture the number or UI set in the configuration tab.
- 4 If previous abs test has not been run, request that DUT be initialized, else do nothing.
- 5 If previous abs test has not been run, measure top/base amplitude (Amplitude1), else Amplitude1 is equal to value of previous test Amplitude2.
- 6 Save result from step 5.
- 7 Pop up to ask user to Decrement c(0). OK pressed.
- 8 Measure top/base amplitude (Amplitude2).
- 9 Subtract Amplitude2 – Amplitude1.
- 10 Compare and report the values from step 9 to be in a range of -0.0083 to -0.05.

Abs Coefficient Step Size  $c(1)$  hold  $c(0)$  hold  $c(-1)$  inc

The purpose of this test is to verify that the difference in amplitude between the coefficient updates falls between the specified values of 0.0083 to 0.05.

**PASS Condition** The difference in the coefficient update when  $c(-1)$  is incremented to the previous state is within 0.0083 and 0.05.

- Measurement Algorithm**
- 1 Obtain sample or acquire signal data.
  - 2 Check that the signal is connected and data pattern exists (PRBS9 pattern).
  - 3 Set memory depth to capture the number or UI set in the configuration tab.
  - 4 If previous abs test has not been run, request that DUT be initialized, else do nothing.
  - 5 If previous abs test has not been run, measure top/base amplitude (Amplitude1), else Amplitude1 is equal to value of previous test Amplitude2.
  - 6 Save result from step 5.
  - 7 Pop up to ask user to Increment  $c(-1)$ . OK pressed.
  - 8 Measure top/base amplitude (Amplitude2).
  - 9 Subtract Amplitude2 – Amplitude1.
  - 10 Compare and report the values from step 9 to be in a range of 0.0083 to 0.05.

## Abs Coefficient Step Size $c(1)$ hold $c(0)$ hold $c(-1)$ dec

The purpose of this test is to verify that the difference in amplitude between the coefficient updates falls between the specified values of  $-0.0083$  to  $-0.05$ .

**PASS Condition** The difference in the coefficient update when  $c(-1)$  is decremented to the previous state is within  $-0.0083$  and  $-0.05$ .

- Measurement Algorithm**
- 1 Obtain sample or acquire signal data.
  - 2 Check that the signal is connected and data pattern exists (PRBS9 pattern).
  - 3 Set memory depth to capture the number or UI set in the configuration tab.
  - 4 If previous abs test has not been run, request that DUT be initialized, else do nothing.
  - 5 If previous abs test has not been run, measure top/base amplitude (Amplitude1), else Amplitude1 is equal to value of previous test Amplitude2.
  - 6 Save result from step 5.
  - 7 Pop up to ask user to Decrement  $c(-1)$ . OK pressed.
  - 8 Measure top/base amplitude (Amplitude2).
  - 9 Subtract Amplitude2 – Amplitude1.
  - 10 Compare and report the values from step 9 to be in a range of  $0.0083$  to  $0.05$ .

## Minimum Pre-cursor Full-scale Test

The purpose of this test is to verify that the minimum Pre-cursor is greater than or equal 1.54.

**PASS Condition** When the coefficients are set to c(1) zero c(0) minimum and c(-1) minimum, the pre-cursor full-scale ratio is greater than or equal 1.54.

- Measurement Algorithm**
- 1 Obtain sample or acquire signal data.
  - 2 Check that the signal is connected and data pattern exists (PRBS9 pattern).
  - 3 Set memory depth to capture the number or UI set in the configuration tab.
  - 4 Pop up to ask user to supply sufficient increment or decrement requests to set c(1) zero c(0) minimum and c(-1) minimum. OK pressed.
  - 5 Measure Vpreshoot and Vtop of the signal.
  - 6 Calculate the pre-cursor Vpreshoot/Vtop.
  - 7 Report and compare the value calculated in step 6 with 1.54.

## Minimum Post-cursor Full-scale Test

The purpose of this test is to verify that the minimum Post-cursor is greater than or equal to 4.

**PASS Condition** When the coefficients are set to  $c(1)$  minimum  $c(0)$  minimum and  $c(-1)$  zero, the post-cursor full-scale ration is greater than or equal to 4.

- Measurement Algorithm**
- 1 Obtain sample or acquire signal data.
  - 2 Check that the signal is connected and data pattern exists (PRBS9 pattern).
  - 3 Set memory depth to capture the number or UI set in the configuration tab.
  - 4 Pop up to ask user to supply sufficient increment or decrement requests to set  $c(1)$  zero  $c(0)$  minimum and  $c(-1)$  minimum. OK pressed.
  - 5 Measure  $V_{\text{Overshoot}}$  and  $V_{\text{top}}$  of the signal.
  - 6 Calculate the pre-cursor  $V_{\text{Overshoot}}/V_{\text{top}}$ .
  - 7 Report and compare the value calculated in step 6 with 4.



# 7 Return Loss ENA/PNA Measurements

This section provides the Methods of Implementation (MOIs) for the Return Loss Measurements using a Keysight Infiniium oscilloscope, PNA or ENA, and the D9010BJAC Compliance Test Application. The Compliance test application controls the PNA/ENA to set the test limits and run the test. The calibration must be done on the PNA/ENA.

- Test Procedure**
- 1 Start the automated test application as described in "**Starting the Compliance Test Application**" on page 17.
  - 2 Calibrate the PNA or ENA.
  - 3 In the Test application, click on the **Set Up** tab. Select **Measurement Option, Lane Option**, and **Channels**.
  - 4 Set up switch matrix (if used) by clicking the **Switch Matrix Setup** button.
  - 5 Type in or select the **Device Identifier** as well as the **User Description** from the drop-down list. Enter your comments in the **Comments** text box.
  - 6 Click the **Select Tests** tab and check the tests you want to run. Check the parent node or group to check all the available tests within the group.
  - 7 Click **Run**. The test limits are automatically calculated.

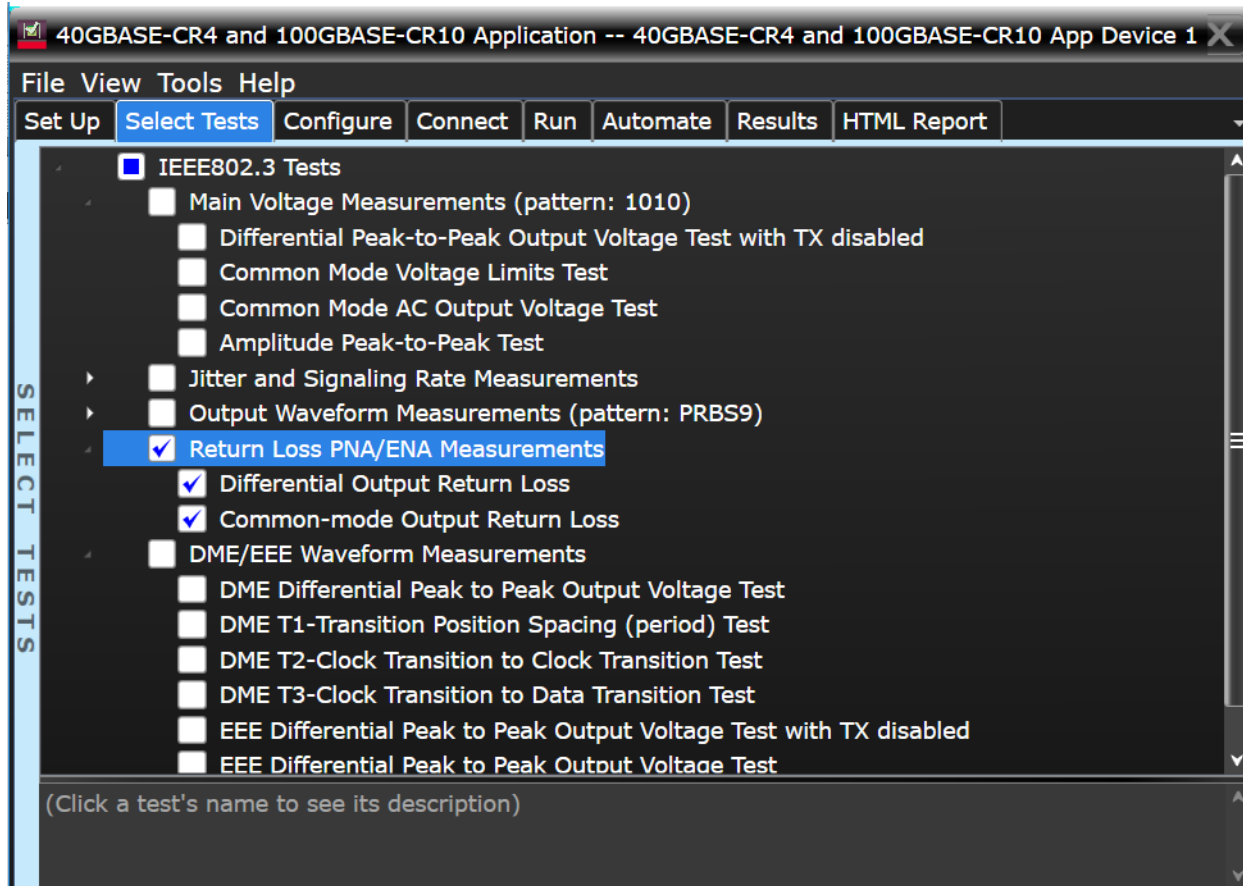


Figure 12 Selecting Return Loss Measurement



## 8 DME/EEE Waveform Measurements

DME Differential Peak-to-Peak Output Voltage Test / 68

DME T1-Transition Position Spacing (Period) Test / 69

DME T2-Clock Transition to Clock Transition Test / 70

DME T3-Clock Transition to Data Transition Test / 71

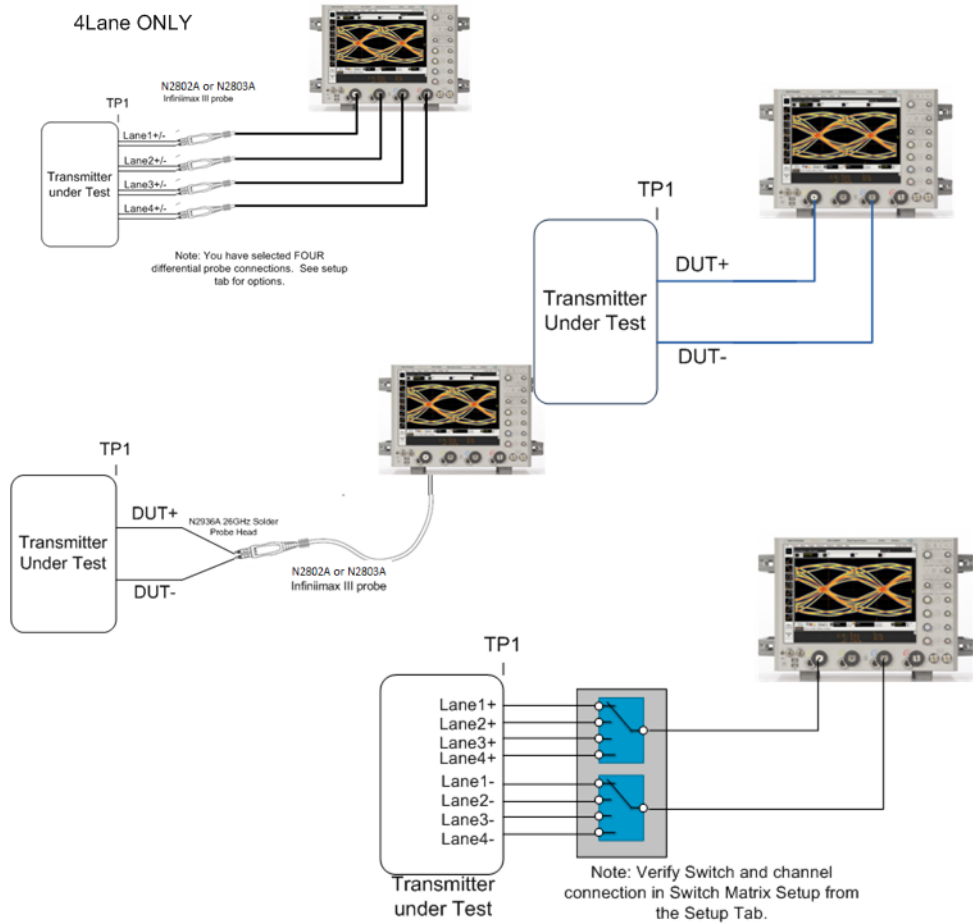
EEE Differential Peak-to-Peak Output Voltage Test with TX Disabled / 72

EEE Differential Peak-to-Peak Output Voltage Test / 73

EEE Common Mode Deviation Voltage Test / 74

This section provides the Methods of Implementation (MOIs) for the DME and EEE Waveform Measurements using a Keysight Infiniium oscilloscope and the D9010BJAC Compliance Test Application.

Probing and Connection for the Bus Signal Level Tests.

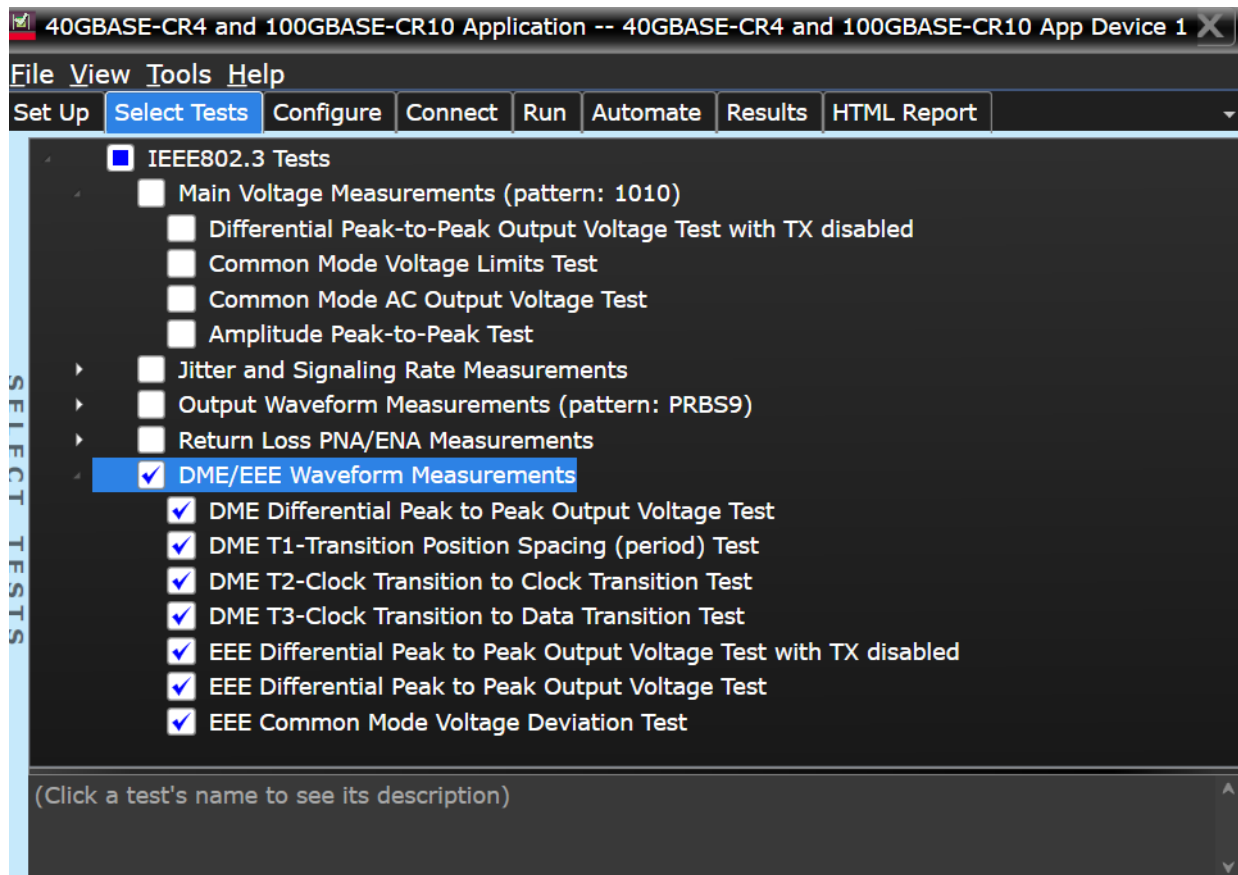


**Figure 13** Probing for DME/EEE Waveform Measurements

You can use any of the oscilloscope channels as the signal source channel. You can identify the channels used for the measurement signal in the **Configuration** tab of the Compliance Test Application. (The channels shown in the previous figure are just an example.)

- Test Procedure**
- 1 Start the automated test application as described in "**Starting the Compliance Test Application**" on page 17.
  - 2 Connect the probes to the signals on the DUT.
  - 3 Connect the oscilloscope probes or cables to the channel(s) of the oscilloscope that you have set up in the **Configuration** tab.
  - 4 In the Test application, click on the **Set Up** tab. Select **Measurement Option**, **Lane Option**, and **Channels**.
  - 5 Set up switch matrix (if used) by clicking the **Switch Matrix Setup** button.
  - 6 Set up InfiniiSim if needed.

- 7 Type in or select the **Device Identifier** as well as the **User Description** from the drop-down list. Enter your comments in the **Comments** text box.
- 8 Click the **Select Tests** tab and check the tests you want to run. Check the parent node or group to check all the available tests within the group.



**Figure 14** Selecting DME/EEE Waveform Tests

#### DME/EEE Waveform Specifications

The 10GBASE-KR DME specifications can be found in IEEE 802.3ap section 73.5.1 Table 73-1 and section 73.5.3 Table 73-2. The 10GBASE-KR EEE specifications can be found in section 72.7.1 Table 72-6.

- DME Differential Peak-to-Peak Output Voltage (0.6-1.2 V).
- DME T1 (3.2 ns-0.01% to 3.2 ns+0.1%).
- DME T2 (6.2 ns-6.6 ns).
- DME T3 (3.0 ns-3.4 ns).
- EEE Differential Peak-to-Peak Output Voltage with TX disabled (max 30 mV).
- EEE Differential Peak-to-Peak Output Voltage with TX enabled (min 720 mV).
- EEE Common Mode Voltage Deviation ( $\pm 150$  mV).

## DME Differential Peak-to-Peak Output Voltage Test

The purpose of this test is to verify that the peak-to-peak voltage of the differential signal on a 1010 pattern is less than 1200 mV.

**PASS Condition** The differential signal max peak-to-peak voltage on a 1010 pattern is less than 1200 mV.

- Measurement Algorithm**
- 1** Obtain sample or acquire signal data.
  - 2** Verify that there is a signal is connected and has a 1010 pattern.
  - 3** Measure the peak-to-peak voltage of the differential signal of DUT+ and DUT-.
  - 4** Compare the min and max peak-to-peak voltage to be within 0.6 to 1.2 V.

## DME T1-Transition Position Spacing (Period) Test

The purpose of this test is to verify that transition spacing of the DME signal is  $3.2 \text{ ns} \pm 0.01\%$ .

**PASS Condition** The mean period is between  $3.2 \text{ ns} \pm 0.01\%$ .

- Measurement Algorithm**
- 1** Obtain sample or acquire signal data.
  - 2** Verify that there is a signal is connected.
  - 3** Set memory depth to capture the number or UI set in the configuration tab.
  - 4** Request DUT in DME mode.
  - 5** Measure the unit interval of the differential DME signal – set UI measurement to SEMI,  $3.2\text{e-}9$ .
  - 6** Compare the mean measurement to  $3.2 \text{ ns} \pm 0.01\%$ .

## DME T2-Clock Transition to Clock Transition Test

The purpose of this test is to verify clock to clock transition is 6.2 ns to 6.6 ns.

**PASS Condition** The mean period is between 6.2 ns to 6.6 ns.

- Measurement Algorithm**
- 1** Obtain sample or acquire signal data.
  - 2** Verify that there is a signal is connected.
  - 3** Set memory depth to capture the number or UI set in the configuration tab.
  - 4** Request DUT in DME mode.
  - 5** Measure the rising to rising edge.
  - 6** Compare the min and max values to measurement to 6.2 ns to 6.6 ns.

## DME T3-Clock Transition to Data Transition Test

The purpose of this test is to verify clock to data transition is 3.0 ns to 3.4 ns.

**PASS Condition** The min and max UI time is between 3.0 ns to 3.4 ns.

- Measurement Algorithm**
- 1** Obtain sample or acquire signal data.
  - 2** Verify that there is a signal is connected.
  - 3** Set memory depth to capture the number or UI set in the configuration tab.
  - 4** Request DUT in DME mode.
  - 5** Measure the unit interval of the differential DME signal – set UI measurement to SEMI, 3.2e-9.
  - 6** Compare the min and max values to measurement to 3.0 ns to 3.4 ns.

## EEE Differential Peak-to-Peak Output Voltage Test with TX Disabled

The purpose of this test is to verify that when TX is disabled the peak-to-peak voltage is less than 30 mV.

**PASS Condition** The max peak-to-peak voltage is less than 30 mV.

- Measurement Algorithm**
- 1** Obtain sample or acquire signal data.
  - 2** Request DUT to be EEE mode.
  - 3** Check that the signal is truly with TX disabled (no valid data transitions).
  - 4** Measure peak-to-peak voltage of the signal.
  - 5** Compare the max peak-to-peak voltage to 30 mV.



## EEE Differential Peak-to-Peak Output Voltage Test

The purpose of this test is to verify that the peak-to-peak voltage of the differential signal on a 1010 pattern is greater or equal to 720 mV.

**PASS Condition** The differential signal max peak-to-peak voltage on a 1010 pattern is greater than or equal to 720 mV.

- Measurement Algorithm**
- 1** Obtain sample or acquire signal data.
  - 2** Request DUT in EEE mode.
  - 3** Verify that there is a signal is connected and has a 1010 pattern.
  - 4** Measure the peak-to-peak voltage of the differential signal of DUT+ and DUT-.
  - 5** Compare the min voltage to be greater than or equal to 720 mV.

## EEE Common Mode Deviation Voltage Test

The purpose of this test is to verify that the common mode signal of the differential pair of the pre-LPI signal and the LPI signal is within  $\pm 150$  mV.

**PASS Condition** The signal voltage change between pre and post LPI is within 150 mV change.

- Measurement Algorithm**
- 1 Obtain sample or acquire signal data.
  - 2 Verify that there is a signal and that the connection is dual-single ended.
  - 3 Request DUT to be pre-LPI.
  - 4 Measure the peak-to-peak voltage of the addition of the channel 1 and 3 or channel 2 and 4.
  - 5 Request DUT to be in LPI.
  - 6 Measure the peak-to-peak voltage of the addition of the channel 1 and 3 or channel 2 and 4.
  - 7 Calculate  $V_{pp}(\text{post}) - V_{pp}(\text{pre})$ .
  - 8 Compare the result from step 7 to  $\pm 150$  mV.

## 9 Debug Mode

Debug mode can be selected to enable the ability to change jitter measurement options. In the **Configuration** tab, select the **Debug** radio button. This will add the following options:

- **Signal Channels**— Select the oscilloscope input channel pair if connected dual single-ended. Or select the channel used for differential connection. All single channel, waveform memories, or functions that contain the word "differential", must be a single probe or signal that is differential. The channel or waveform memories with two channels are for dual single-ended connections. Note: All functions must be differential.
- **Rj Bandwidth** — Choose the Rj Filter. Options are Narrow (Pink) or Wide (White). This changes the amount of DC jitter in the Rj measurement.
- **Jitter Pattern Length** — Choose Periodic or Arbitrary. Periodic is used for data patterns that are periodic and repeat through the scope memory. Arbitrary is used for random data patterns or long data patterns (for example, PRBS31) that do not repeat through the scope memory. If Arbitrary is selected, set the ISI filters.
- **ISI Filter Lead** — When using Arbitrary mode for the Jitter Pattern Length, set the Leading ISI filter coefficient. To help select the correct ISI filter, see ["Application Note 1574: Choosing the ISI Filter Size for EZJIT Plus Arbitrary Data Jitter Analysis"](#) (at [www.keysight.com](http://www.keysight.com), literature part number 5989-4974EN).
- **ISI Filter Lag** — When using Arbitrary mode for the Jitter Pattern Length, set the Lagging ISI filter coefficient. Again, to help select the correct ISI filter, see ["Application Note 1574: Choosing the ISI Filter Size for EZJIT Plus Arbitrary Data Jitter Analysis"](#).



# 10 Exporting Measurement Results to Repository

Exporting Measurement Results to Repository / 78

This section describes the Upload Measurement Results To Repository feature of the Keysight D9010BJAC 40GBASE-CR4 and 100GBASE-CR10 Compliance Test Application.

## Exporting Measurement Results to Repository

The Upload Results To Repository feature is an add-on to the Keysight Test Application, where it expands the boundaries of storing and analyzing the measurement results to a wider audience, who may be based in multiple sites across various geographical locations. Along with the feature of exporting test results from the Test Application into your local disk in a CSV or HTML file format, you have the option to upload the test results to a Dataset on a Web Repository. Based on your requirements, you may either upload only a single measurement trial or upload huge volumes of measurement results to any Dataset.

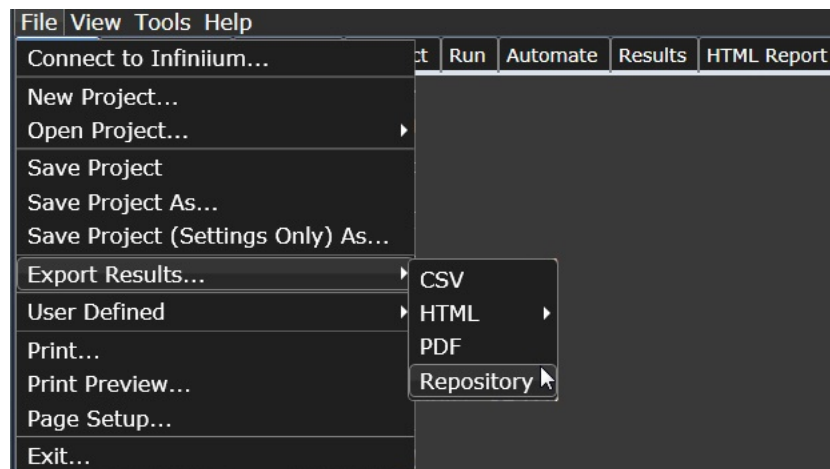
Not only can remote users with an active Internet connection access these Datasets and the corresponding test results on the Web Repository, but they have the option to add and delete Datasets on the Web Server. In the Upload Results To Repository feature, you can even modify the Dataset properties, which are helpful especially when performing a graphical analysis of the uploaded data.

In combination with the *Keysight KS6800A Series Analytics Software*, the Upload Results To Repository feature provides a comprehensive solution to export, view and perform analysis of the measurement results, thereby resulting in qualitative data to ensure that the Device Under Test (DUT) is compliant to the industry standards.

Refer to the *Keysight KS6800A Series Analytics Software Online Help* for more information about the functionality of various features in this software.

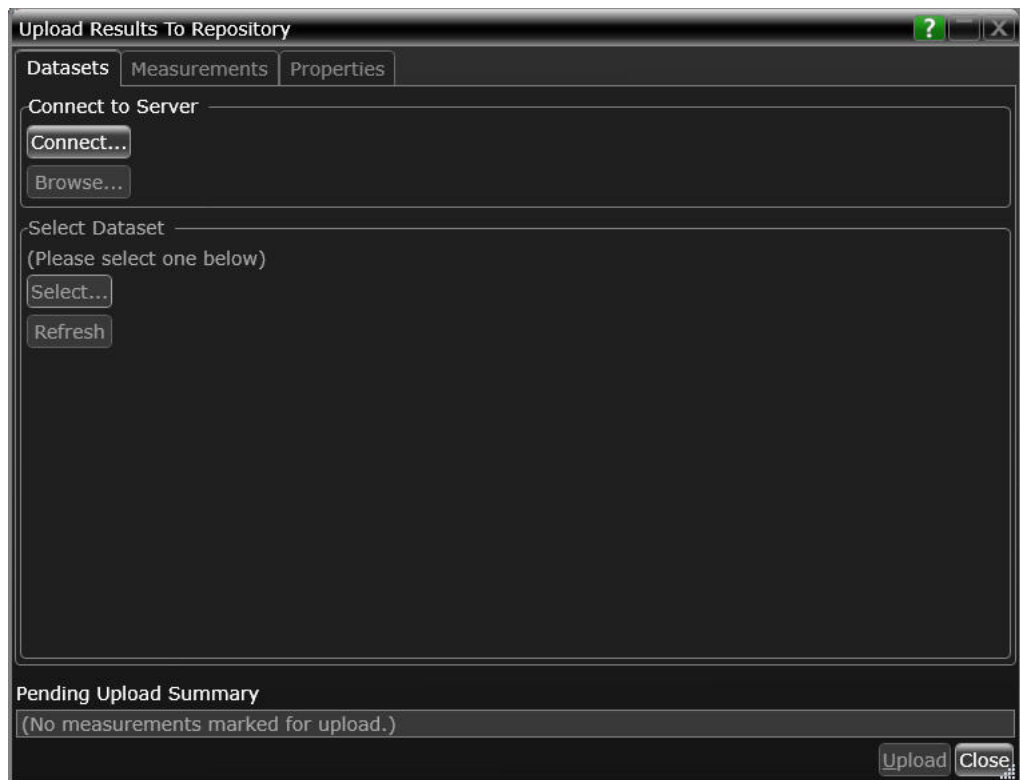
To export measurement results to the Repository after the completion of test runs,

- 1 From the Test Application's main menu, click **File > Export Results... > Repository**.



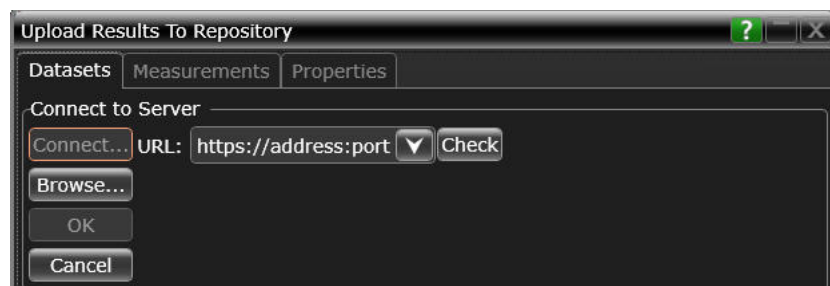
The **Upload Results to Repository** window appears.

- 2 In the **Connect to Server** pane of the **Datasets** tab, click **Connect...** to login to the Dataset Repository server.



- 3 In the **URL:** drop-down text field that appears, replace the default text with the actual IP address or the URL along with the port number, if applicable.  

You may enter the URL of the Web Repository server, which may be a self-hosted server on your machine (<http://localhost:5000/>), a remote server or an authentication server. Note that all such URLs accessed via this window appear as a drop-down list in the **URL:** field.
- 4 Click the **Check** button to verify that the KS6800A Series Analytics service is available on the specified web address. Repeat this step each time you edit the web address.



- For unrestricted access to the Repository
  - a If the server does not require authentication and the KS6800A Series Analytics service is found on the specified web address, the version information is displayed adjacent to the **Check** button.

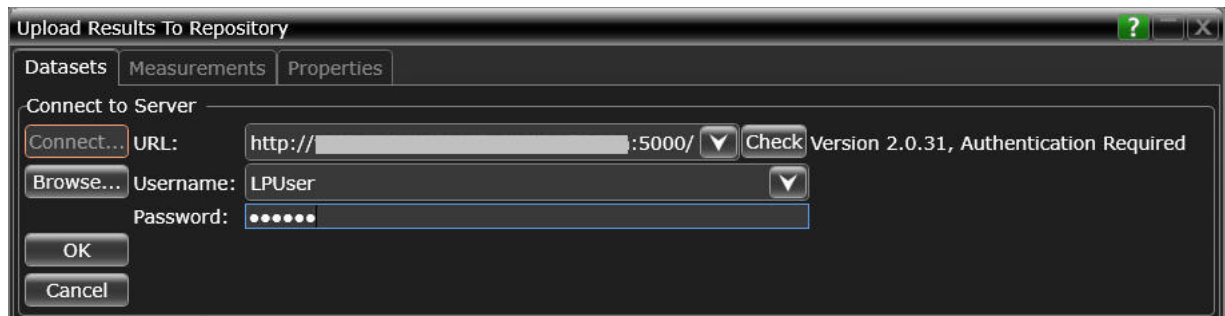


- b If you click **OK**, the **Upload Results to Repository** window displays the connectivity status to the Dataset Repository.
- c Click **Browse...** to navigate directly to the URL.



- For restricted access to the Repository
  - a If service is found on the specified URL but access to the web server is restricted based on authentication, the version information is displayed along with the text Authentication Required adjacent to the **Check** button. Also, the **Username:** and **Password:** fields appear. The **OK** button remains disabled until the authentication credentials are entered.
  - b Enter the user credentials in the respective fields, which are required for authentication to access those Datasets that have been created on the web server you are connecting to. For each URL that you access, the **Username:** drop-down box keeps a record and displays all user names used to access the respective URL.

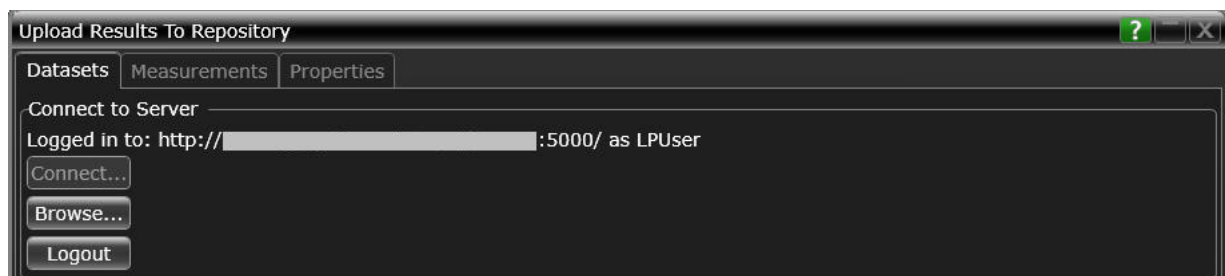




- c Click **OK** to connect to the entered URL/IP address.

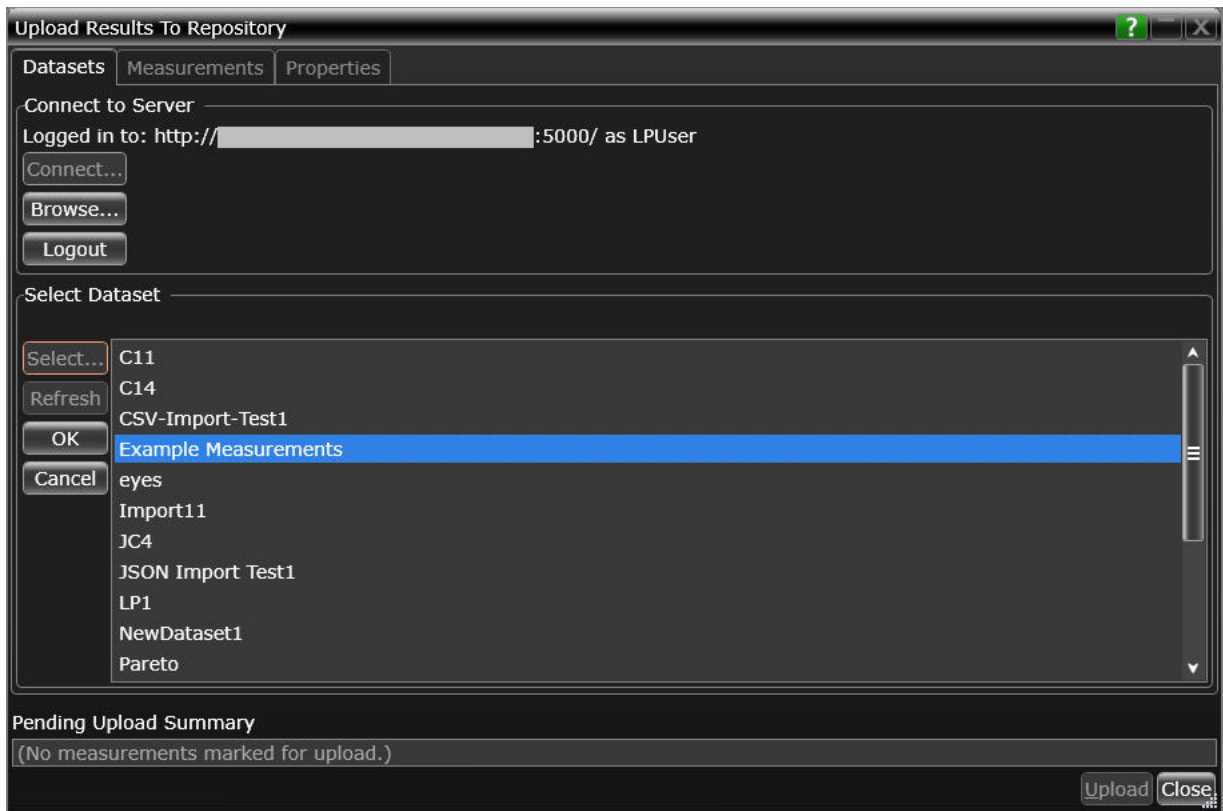
The **Connect to Server** area displays the connection status along with the username.

- d Click **Browse...** to navigate directly to the URL.

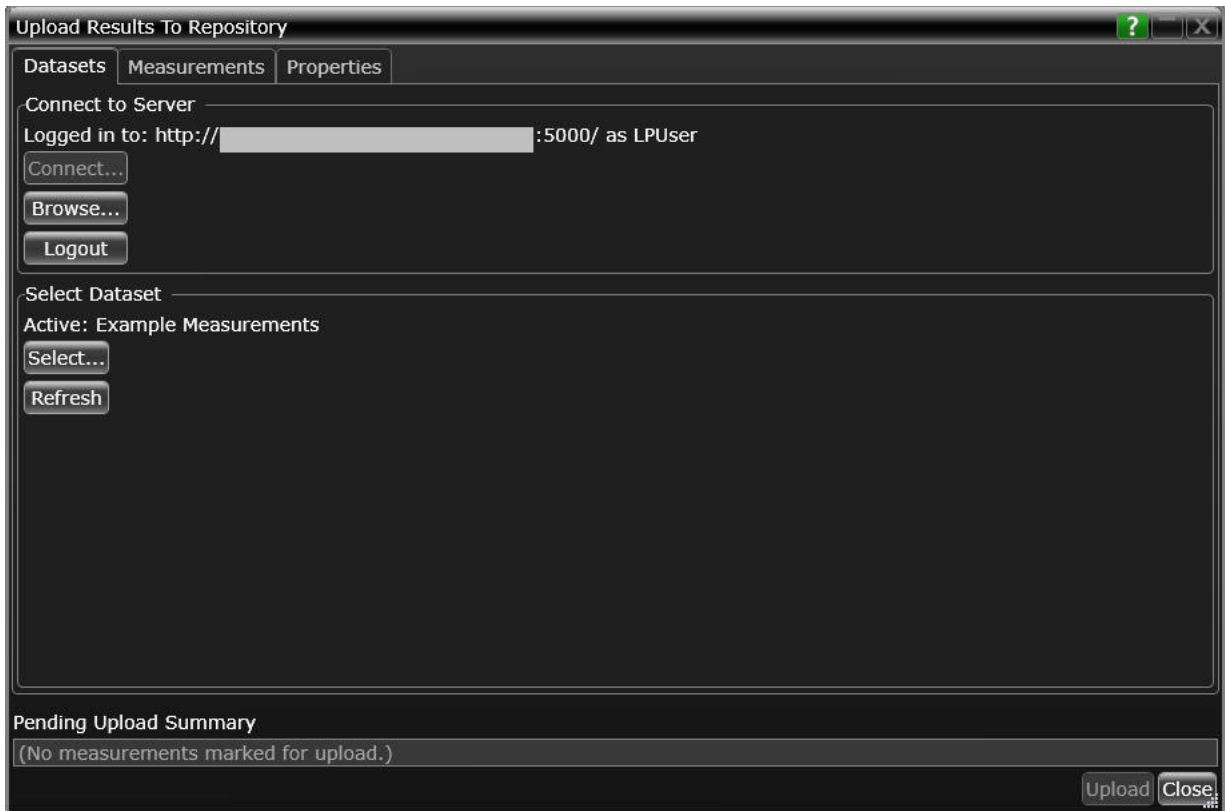


- 5 In the **Select Dataset** area, click **Select...** to view the list of Datasets created on the connected repository. Click **Refresh** to update the list of Datasets that appear in the Test Application's user interface.
- 6 Select the Dataset name where you wish to upload measurement results to. Click **OK**.

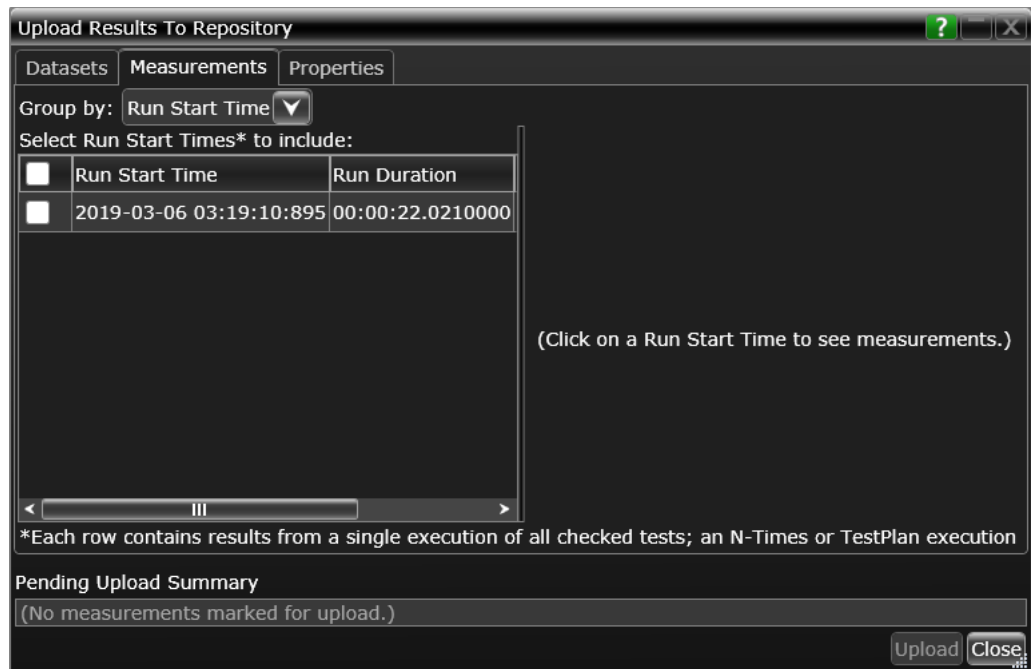
## 10 Exporting Measurement Results to Repository



The **Select Dataset** area displays the selected Dataset as Active. The **Measurements** and **Properties** tabs are enabled after a Dataset is selected.

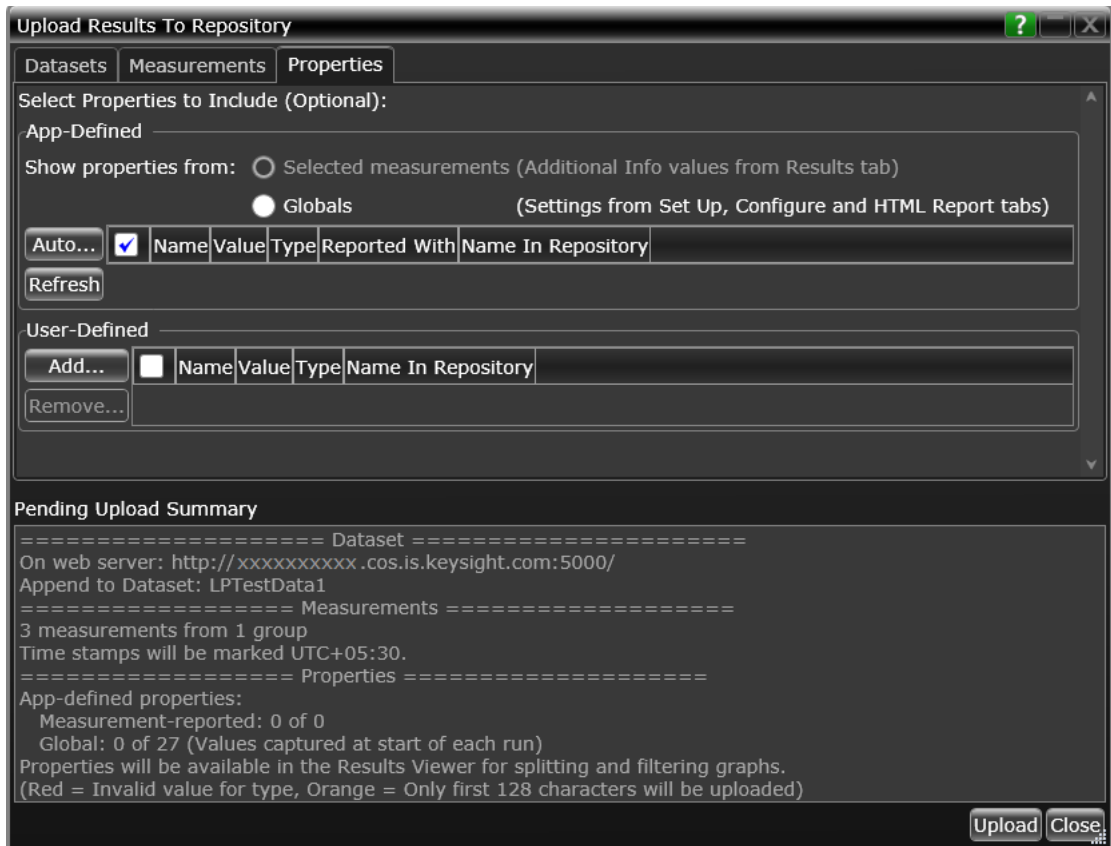


- 7 Click the **Measurements** tab where the test results from the last test run are displayed.
- 8 You may select and export multiple test results to the repository. You may change the format for the display of measurement data using the drop-down options in the **Group by:** field.

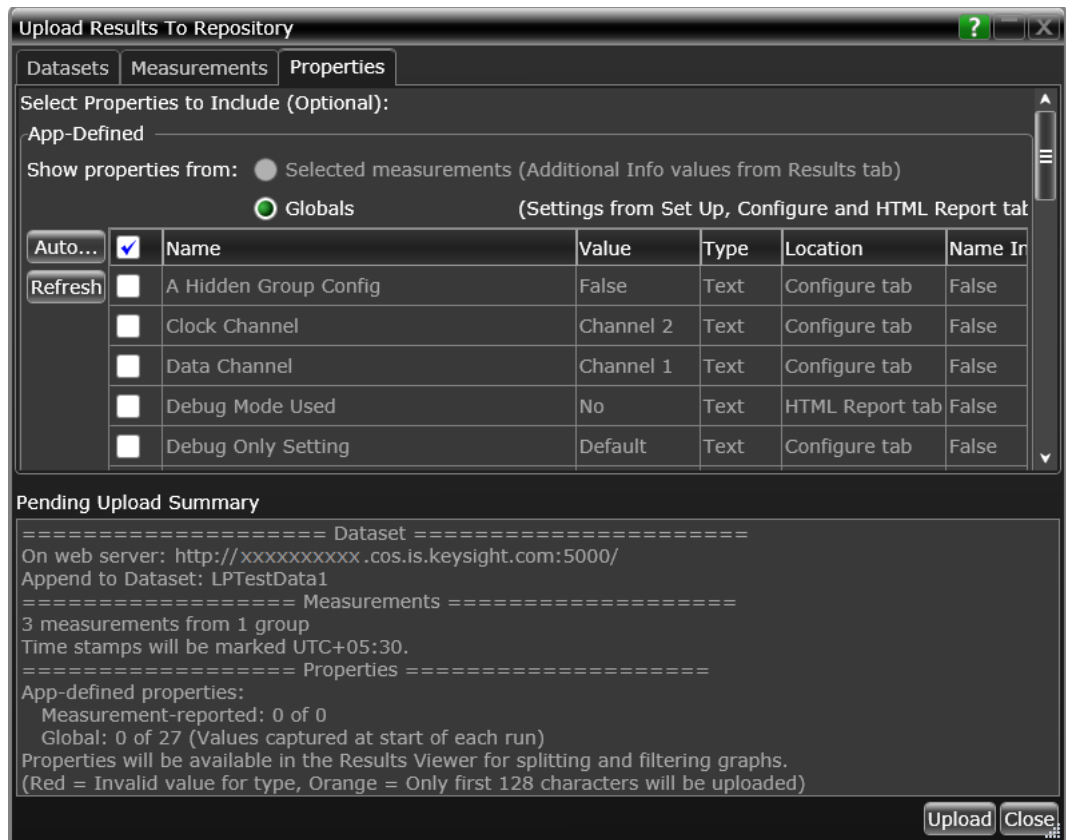


- 9 After selecting one or more measurements, either click **Upload** or switch to the **Properties** tab to associate one or more properties to the measurements that are being uploaded to the Web Server.

To perform an enhanced analysis on the measurement data using the *KS6800A Series Analytics Service Software*, Keysight recommends assigning properties to the measurements.



- 10 Click the **Properties** tab to assign properties for your measurement results that you select to upload. By default, the **App-Defined** properties are selected to be uploaded in association with the measurement data, wherein only certain aspects of the selected measurements are uploaded. However, you may switch to **Globals** to include as properties one or more options configured under the rest of the tabs of the Compliance Test Application or define one or more custom property values to be associated with the selected measurement data.

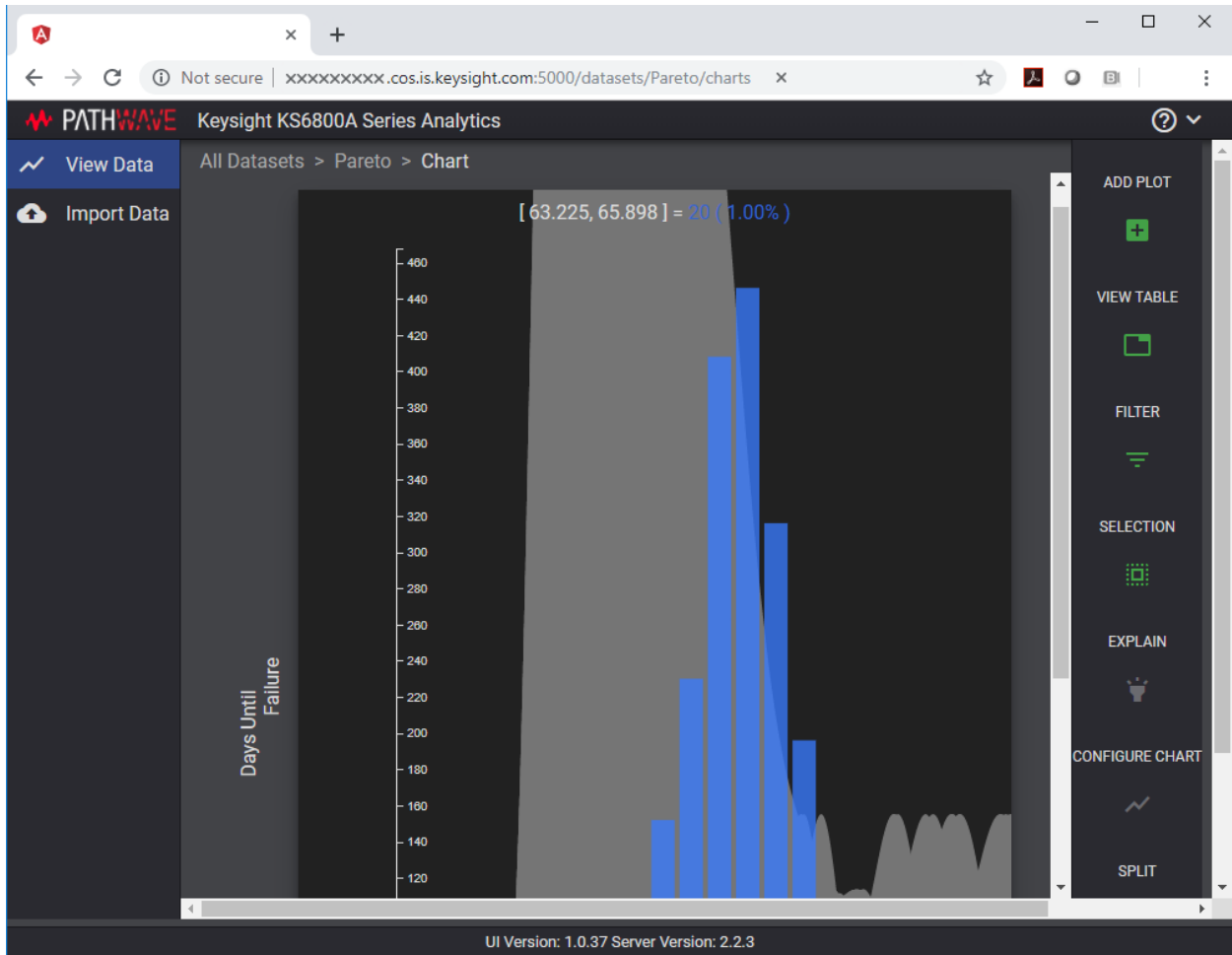


- 11 Click **Upload** to begin uploading measurement results.
- 12 Click **Close** to exit the **Upload Results to Repository** window and to return to the Compliance Test Application.

You may access the Dataset Repository using the Internet browser on your machine to view the measurement results graphically on the *KS6800A Series Analytics Service Software*.

## KS6800A Series Analytics Service Software

The KS6800A Series Analytics Service software supports multiple data sources and also a wide range of data import clients. This web-based software provides various types of charts, such as Histogram, Box-and-Whisker, Line, Scatter, Eye Diagram and Constellation, each with split capability to enable data analysis. Once you upload the measurement results to a Dataset on the *KS6800A Series Analytics Service Software* via the **Upload Results to Repository** window of the Test Application, the measurement results can be viewed graphically as shown below:



For more information on the Data Analytics Web Service Software, visit [KS6800A Series Analytics Service Software](#) page on the Keysight website. You may refer to the Help manual provided within the software to understand the functionality of its features.

## 10 Exporting Measurement Results to Repository



# A Calibrating the Infiniium Oscilloscope and Probe

Oscilloscope Internal Calibration / 90

Probe Calibration / 95

This section describes the Keysight Infiniium digital storage oscilloscope calibration procedures.

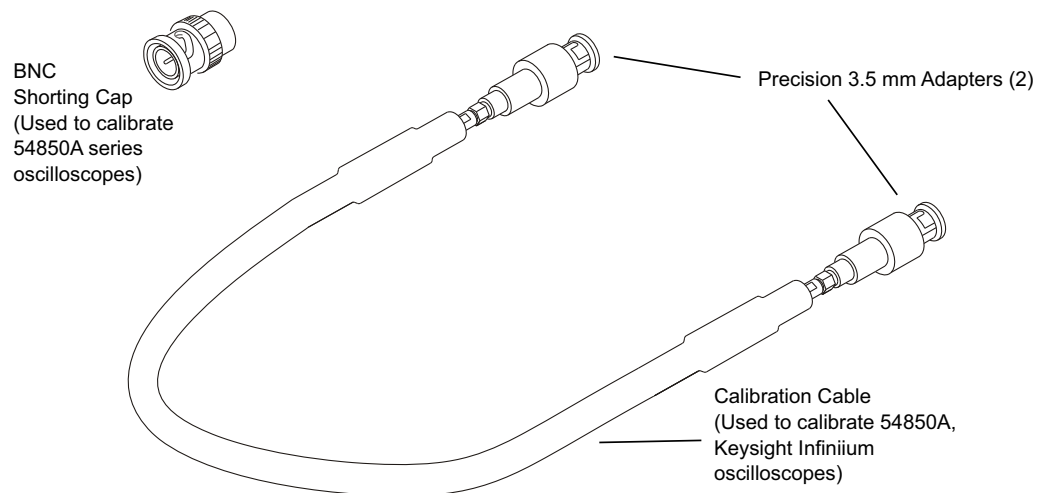
## Oscilloscope Internal Calibration

This will perform an internal diagnostic and calibration cycle for the oscilloscope. For the Keysight oscilloscope, this is referred to as Calibration.

### Required Equipment for Oscilloscope Calibration

To calibrate the Infiniium oscilloscope in preparation for running the automated tests, you need the following equipment:

- Keyboard, qty = 1, (provided with the Keysight Infiniium oscilloscope).
- Mouse, qty = 1, (provided with the Keysight Infiniium oscilloscope).
- Precision 3.5 mm BNC to SMA male adapter, Keysight p/n 54855-67604, qty = 2 (provided with the Keysight Infiniium oscilloscope).
- Calibration cable (provided with Keysight Infiniium oscilloscopes). Use a good quality 50  $\Omega$  BNC cable.
- BNC shorting cap.



**Figure 15** Accessories Provided with the Keysight Infiniium Oscilloscope

## Running the Oscilloscope Internal Calibration

This Calibration will take about 20 minutes. Perform the following steps:

- 1** Set up the oscilloscope with the following steps:
  - a** Connect the keyboard, mouse, and power cord to the rear of the oscilloscope.
  - b** Plug in the power cord.
  - c** Turn on the oscilloscope by pressing the power button located on the lower left of the front panel.
  - d** Allow the oscilloscope to warm up at least 30 minutes prior to starting the calibration procedure in step 3 below.
- 2** Locate and prepare the accessories that will be required for the internal calibration:
  - a** Locate the BNC shorting cap.
  - b** Locate the calibration cable.
  - c** Locate the two Keysight precision SMA/BNC adapters.
  - d** Attach one SMA adapter to the other end of the calibration cable - hand tighten snugly.
  - e** Attach another SMA adapter to the other end of the calibration cable - hand tighten snugly.

- 3 Referring to the following figure, perform the following steps:
  - a Click the **Utilities > Calibration...** menu to open the Calibration dialog box.

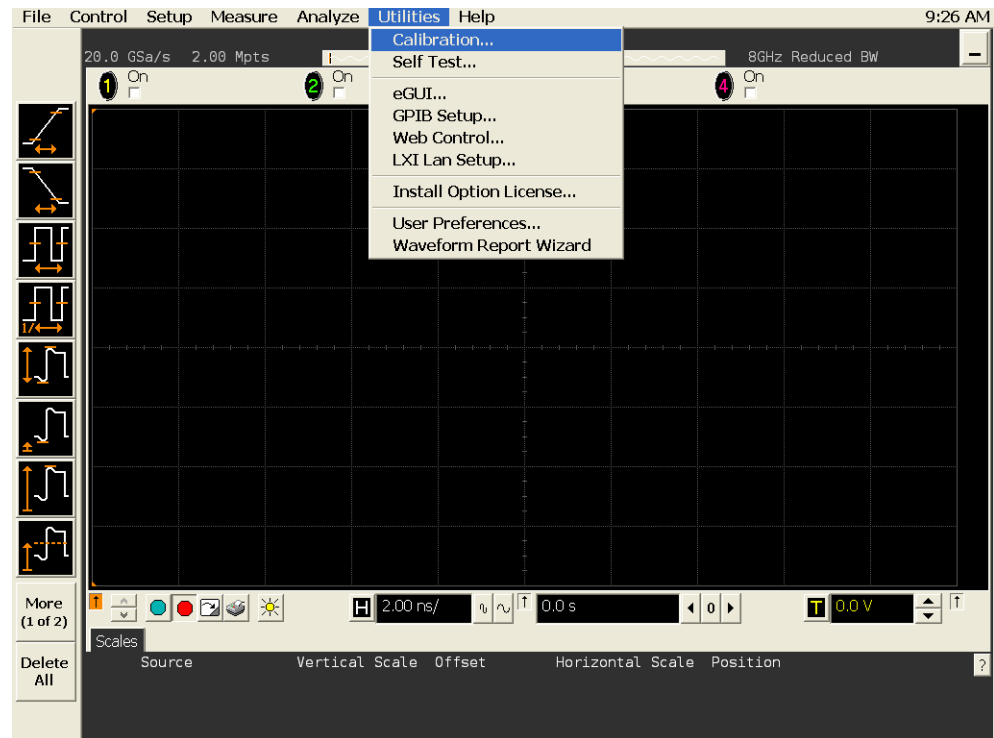
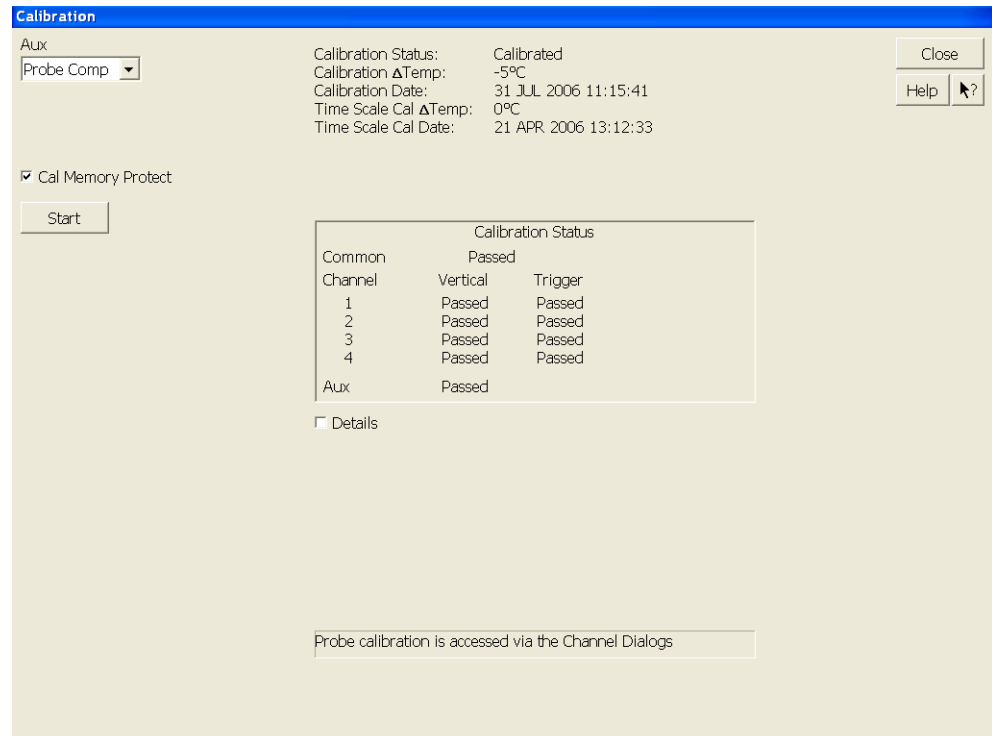


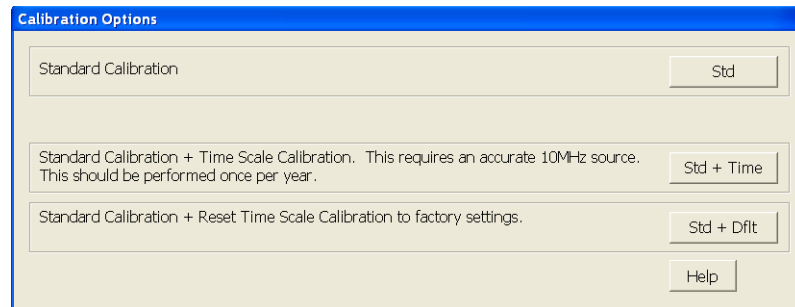
Figure 16 Accessing the Calibration Menu

- 4 Referring to the following figure, perform the following steps to start the calibration:



**Figure 17** Oscilloscope Calibration Window

- a Uncheck the **Cal Memory Protect** checkbox.
- b Click the **Start** button to begin the calibration.
- c During the calibration of channel 1, if you are prompted to perform a **Time Scale Calibration**, as shown in the following figure, click the **Std+Dflt** button to continue the calibration, using the Factory default calibration factors.



**Figure 18** Time Scale Calibration Dialog Box

- d When the calibration procedure is complete, you will be prompted with a Calibration Complete message window. Click the **OK** button to close this window.
- e Confirm that the Vertical and Trigger Calibration Status for all Channels passed.
- f Click the **Close** button to close the calibration window.
- g The internal calibration is completed.

**NOTE**

These steps do not need to be performed every time a test is run. However, if the ambient temperature changes more than 5 degrees Celsius from the calibration temperature, this calibration should be performed again. The delta between the calibration temperature and the present operating temperature is shown in the **Utilities > Calibration...** menu.

## Probe Calibration

Before performing the automated tests, you should calibrate the probes. Calibration of the solder-in probe heads consist of a vertical calibration and a skew calibration. The vertical calibration should be performed before the skew calibration. Both calibrations should be performed for best probe measurement performance.

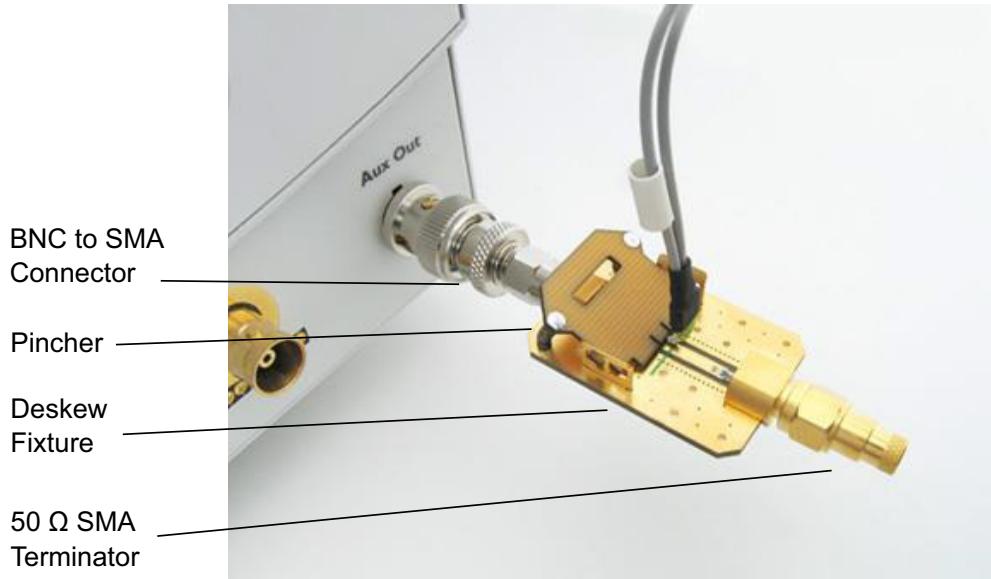
### Required Equipment for Probe Calibration

The calibration procedure requires the following parts.

- BNC (male) to SMA (male) adapter.
- Deskew fixture.
- 50  $\Omega$  SMA terminator.

### Connecting the Probe for Calibration

For the following procedure, refer to the following figure.



**Figure 19** Solder-in Probe Head Calibration Connection Example

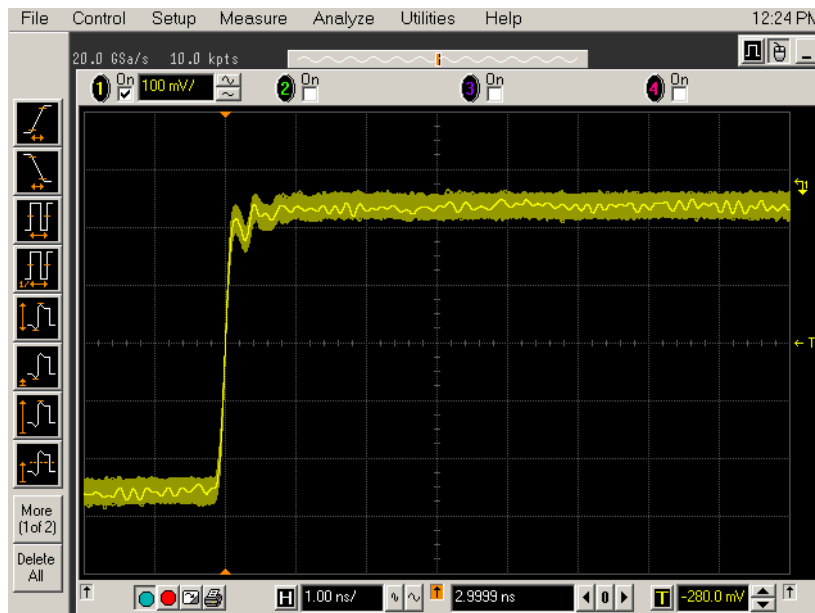
- 1 Connect BNC (male) to SMA (male) adapter to the deskew fixture on the connector closest to the yellow pincher.
- 2 Connect the 50  $\Omega$  SMA terminator to the connector farthest from yellow pincher.



- 3 Connect the BNC side of the deskew fixture to the Aux Out BNC of the Infiniium oscilloscope.
- 4 Connect the probe to an oscilloscope channel.
- 5 To minimize the wear and tear on the probe head, it should be placed on a support to relieve the strain on the probe head cables.
- 6 Push down the back side of the yellow pincher. Insert the probe head resistor lead underneath the center of the yellow pincher and over the center conductor of the deskew fixture. The negative probe head resistor lead or ground lead must be underneath the yellow pincher and over one of the outside copper conductors (ground) of the deskew fixture. Make sure that the probe head is approximately perpendicular to the deskew fixture.
- 7 Release the yellow pincher.

## Verifying the Connection

- 1 On the Infiniium oscilloscope, press the **[Auto Scale]** key on the front panel.
- 2 Set the volts per division to **100 mV/div**.
- 3 Set the horizontal scale to **1.00 ns/div**.
- 4 Set the horizontal position to approximately **3 ns**. You should see a waveform similar to that in the following figure.



**Figure 20** Good Connection Waveform Example

If you see a waveform similar to that of the following figure, then you have a bad connection and should check all of your probe connections.

A Calibrating the Infiniium Oscilloscope and Probe

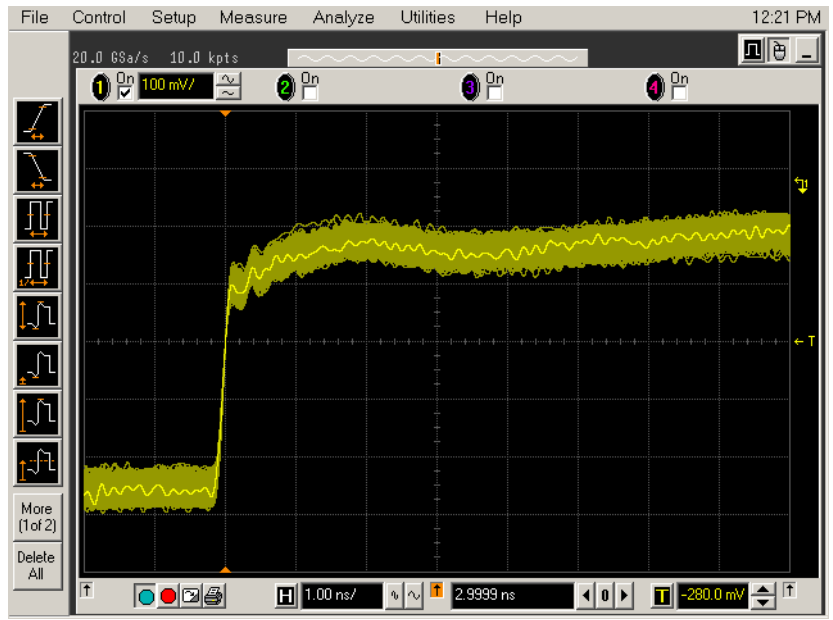
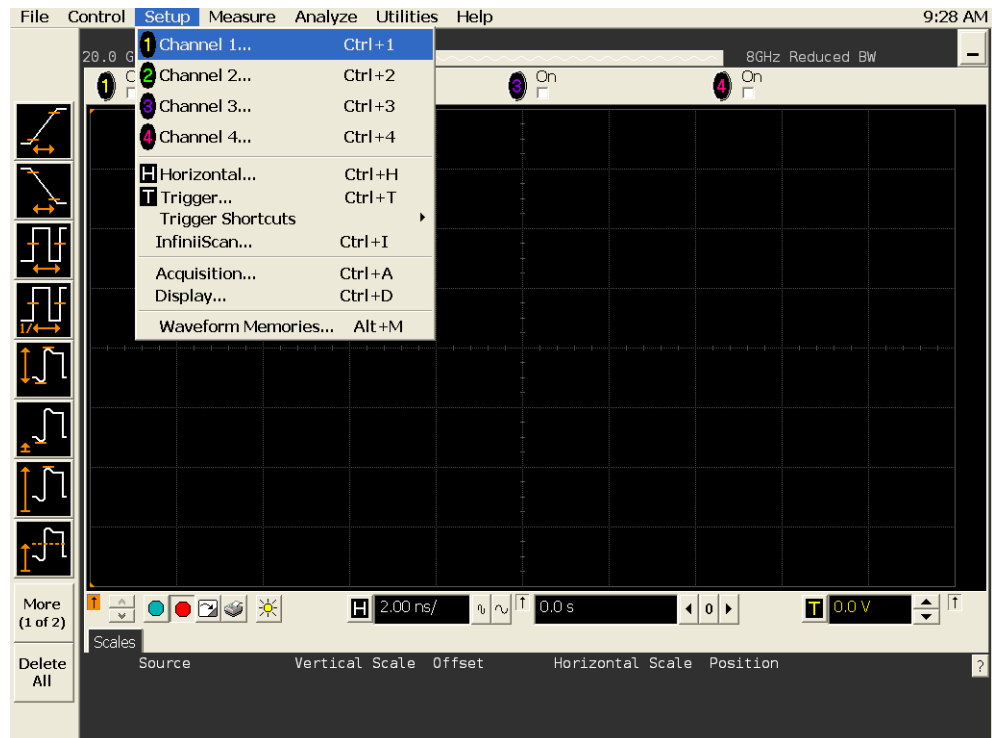


Figure 21 Bad Connection Waveform Example

## Running the Probe Calibration and Deskew

- 1 On the Infiniium oscilloscope in the **Setup** menu, select the channel connected to the probe, as shown in the following figure.



**Figure 22** Channel Setup Window

- 2 In the Channel Setup dialog box, select the **Probes...** button, as shown in the following figure.

## A Calibrating the Infiniium Oscilloscope and Probe

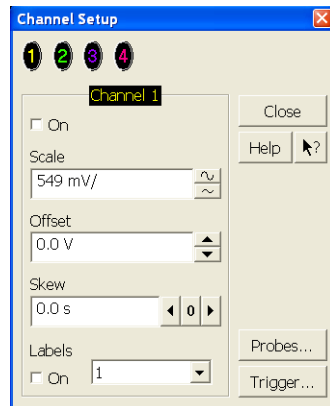


Figure 23 Channel Dialog Box

- 3 In the Probe Setup dialog box, select the **Calibrate Probe...** button.

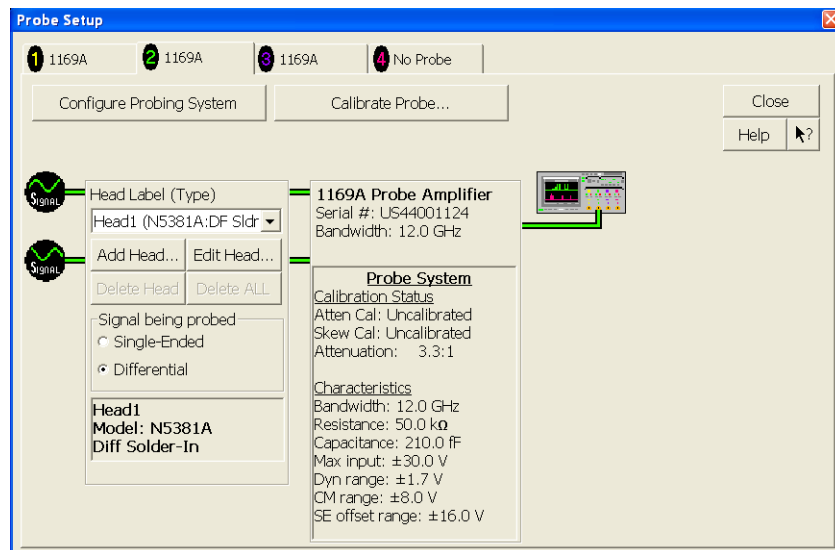
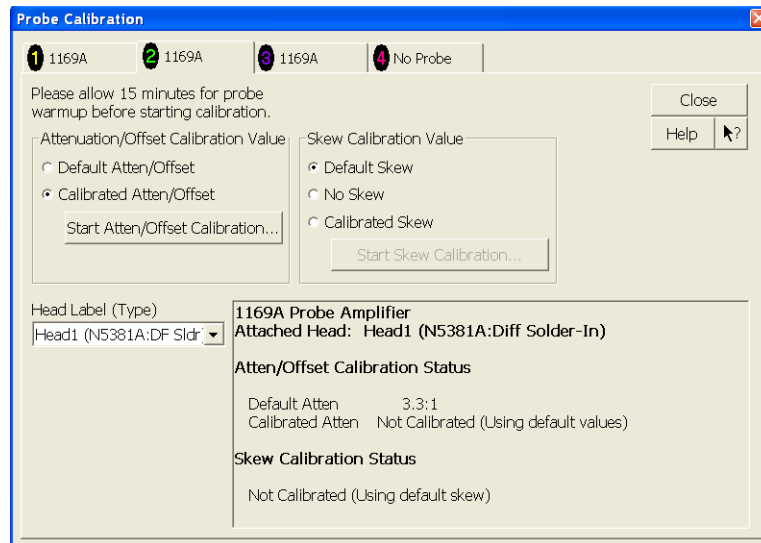


Figure 24 Probe Setup Window

- 4 In the Probe Calibration dialog box, select the **Calibrated Atten/Offset** radio button.
- 5 Select the **Start Atten/Offset Calibration...** button and follow the on-screen instructions for the vertical calibration procedure.



**Figure 25** Probe Calibration Window

- 6 Once the vertical calibration has successfully completed, select the **Calibrated Skew...** button.
- 7 Select the **Start Skew Calibration...** button and follow the on-screen instructions for the skew calibration.

At the end of each calibration, the oscilloscope will prompt you if the calibration was or was not successful.

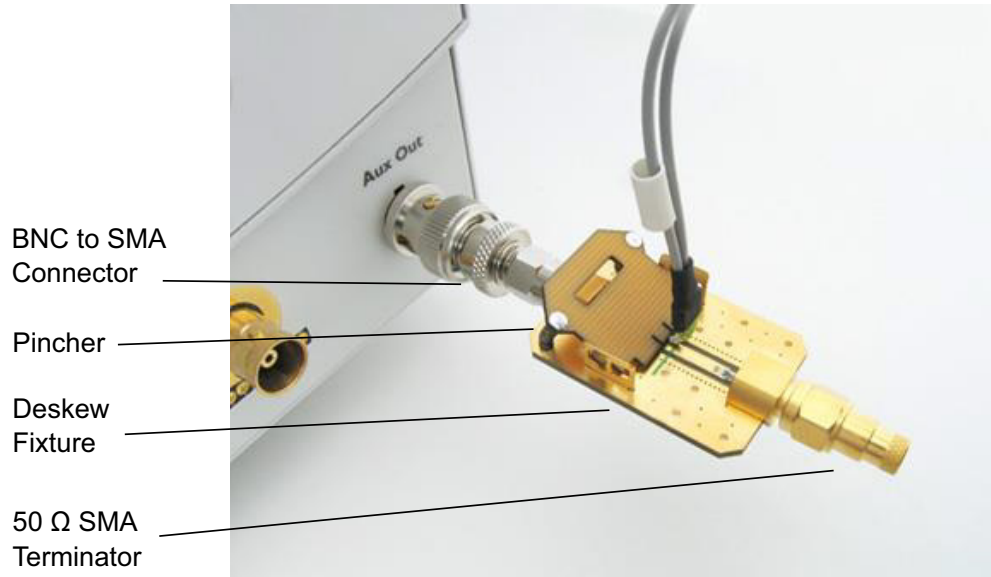
## Verifying the Probe Calibration

If you have successfully calibrated the probe, it is not necessary to perform this verification. However, if you want to verify that the probe was properly calibrated, the following procedure will help you verify the calibration.

The calibration procedure requires the following parts:

- BNC (male) to SMA (male) adapter.
- SMA (male) to BNC (female) adapter.
- BNC (male) to BNC (male) 12 inch cable such as the Keysight 8120-1838.
- Keysight 54855-61620 calibration cable (Infiniium oscilloscopes with bandwidths of 6 GHz and greater only).
- Keysight 54855-67604 precision 3.5 mm adapters (Infiniium oscilloscopes with bandwidths of 6 GHz and greater only).
- Deskew fixture.

For the following procedure, refer to the following figure.

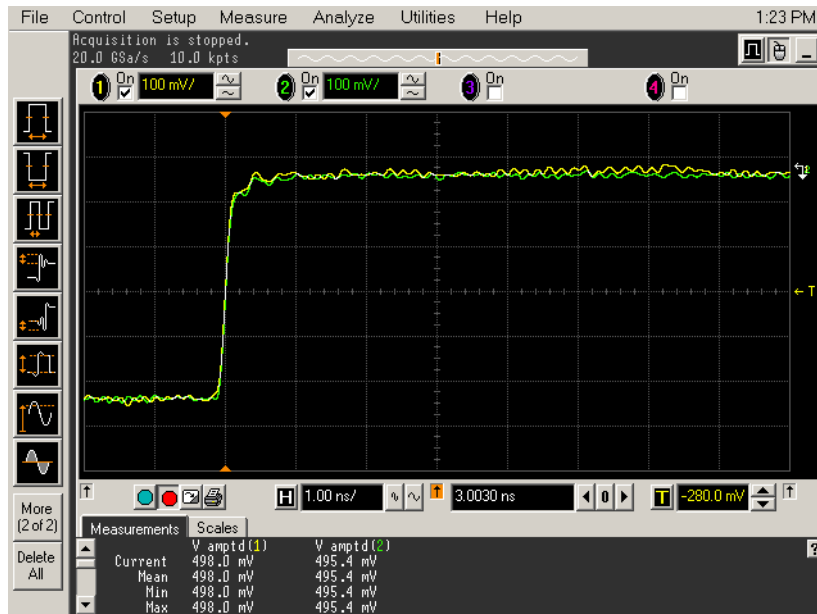


**Figure 26** Probe Calibration Verification Connection Example

- 1 Connect BNC (male) to SMA (male) adapter to the deskew fixture on the connector closest to the yellow pincher.
- 2 Connect the SMA (male) to BNC (female) to the connector farthest from the yellow pincher.

- 3 Connect the BNC (male) to BNC (male) cable to the BNC connector on the deskew fixture to one of the unused oscilloscope channels. For Infiniium oscilloscopes with bandwidths of 6 GHz and greater, use the 54855-61620 calibration cable and the two 54855-64604 precision 3.5 mm adapters.
- 4 Connect the BNC side of the deskew fixture to the Aux Out BNC of the Infiniium oscilloscope.
- 5 Connect the probe to an oscilloscope channel.
- 6 To minimize the wear and tear on the probe head, it should be placed on a support to relieve the strain on the probe head cables.
- 7 Push down on the back side of the yellow pincher. Insert the probe head resistor lead underneath the center of the yellow pincher and over the center conductor of the deskew fixture. The negative probe head resistor lead or ground lead must be underneath the yellow pincher and over one of the outside copper conductors (ground) of the deskew fixture. Make sure that the probe head is approximately perpendicular to the deskew fixture.
- 8 Release the yellow pincher.
- 9 On the oscilloscope, press the autoscale button on the front panel.
- 10 Select Setup menu and choose the channel connected to the BNC cable from the pull-down menu.
- 11 Select the **Probes...** button.
- 12 Select the **Configure Probe System** button.
- 13 Select **User Defined Probe** from the pull-down menu.
- 14 Select the **Calibrate Probe...** button.
- 15 Select the **Calibrated Skew** radio button.
- 16 Once the skew calibration is completed, close all dialog boxes.
- 17 Select the **Start Skew Calibration...** button and follow the on-screen instructions.
- 18 Set the vertical scale for the displayed channels to **100 mV/div**.
- 19 Set the horizontal range to **1.00 ns/div**.
- 20 Set the horizontal position to approximately **3 ns**.
- 21 Change the vertical position knobs of both channels until the waveforms overlap each other.
- 22 Select the Setup menu choose **Acquisition...** from the pull-down menu.
- 23 In the Acquisition Setup dialog box enable averaging. When you close the dialog box, you should see waveforms similar to that in the following figure.

## A Calibrating the Infiniium Oscilloscope and Probe



**Figure 27** Calibration Probe Waveform Example

### NOTE

Each probe is calibrated with the oscilloscope channel to which it is connected. Do not switch probes between channels or other oscilloscopes, or it will be necessary to calibrate them again. It is recommended that the probes be labeled with the channel on which they were calibrated.



# Index

## Numerics

40GBASE-CR4/100GBASE-CR10  
compliance test application, 3

## A

Abs Coefficient Step Size c(1) dec c(0) hold  
c(-1) hold, 55  
Abs Coefficient Step Size c(1) hold c(0) dec  
c(-1) hold, 57  
Abs Coefficient Step Size c(1) hold c(0) hold  
c(-1) dec, 59  
Abs Coefficient Step Size c(1) hold c(0) hold  
c(-1) inc, 58  
Abs Coefficient Step Size c(1) hold c(0) inc  
c(-1) hold, 56  
Abs Coefficient Step Size c(1) inc c(0) hold  
c(-1) hold, 54  
Amplitude Peak to Peak Output Voltage  
Test, 41  
application software, installing, 10  
application software, starting, 17  
Automation tab, 18

## B

BNC shorting cap, 90  
BNC to SMA male adapter, 90

## C

calibrating the oscilloscope, 16, 20, 89  
calibration cable, 90  
Common Mode AC Output Voltage Test, 40  
Common Mode Voltage Test, 39  
Configure tab, 18  
Connect tab, 18

## D

data rate, 46  
data rate and jitter measurements, 43  
Debug Mode, 75  
deskew and probe calibration, running, 99  
deterministic jitter, 47  
Differential Peak-to-Peak Output Voltage  
Test with TX Disabled, 38

DME Differential Peak-to-Peak Output  
Voltage Test, 68  
DME T1-Transition Position Spacing (Period)  
Test, 69  
DME T2-Clock Transition to Clock Transition  
Test, 70  
DME T3-Clock Transition to Data Transition  
Test, 71  
DME/EEE waveform measurements, 65  
DME/EEE waveform specifications, 67  
duty cycle distortion, 47

## E

EEE Common Mode Deviation Voltage  
Test, 74  
EEE Differential Peak-to-Peak Output  
Voltage Test, 73  
EEE Differential Peak-to-Peak Output  
Voltage Test with TX Disabled, 72  
equipment required for calibration, 90  
equipment required for probe  
calibration, 95

## H

HTML Report tab, 18

## I

installation, 9  
ISI Filter Lag, 75  
ISI Filter Lead, 75

## J

jitter, 47  
jitter and data rate measurements, 43  
Jitter Pattern Length, 75

## K

keyboard, 90

## L

license key, installing, 11

## M

main voltage measurements, 35  
main voltage specifications, 37  
measurements, preparing, 15, 19  
Minimum Post-cursor Full-scale Test, 61  
Minimum Pre-cursor Full-scale Test, 60  
mouse, 90

## N

notices, 3

## O

oscilloscope calibration, 16, 20  
oscilloscope internal calibration, 90  
oscilloscope internal calibration,  
running, 91

## P

precision 3.5 mm BNC to SMA male  
adapter, 90  
probe calibration, 95  
probe calibration and deskew, running, 99  
probe calibration connection, verifying, 97  
probe calibration, connecting, 95  
probe calibration, verifying, 101

## R

random jitter, 47  
Results tab, 18  
return loss ENA/PNA measurements, 63  
Rj Bandwidth, 75  
Run Tests tab, 18

## S

Select Tests tab, 18

## Index

Set Up tab, [18](#)  
specifications, DME/EEE waveform, [67](#)  
specifications, main voltage, [37](#)  
specifications, transmitter output, [45, 51](#)

## T

total jitter, [47](#)  
transition time, falling edge, [53](#)  
transmitter DC amplitude, [52](#)  
transmitter output specifications, [45, 51](#)  
transmitter output waveform  
measurements, [49](#)