

Keysight X-Series Signal Analyzers

Option SSD

Solid State Disk Drive

Notice: This document contains references to Agilent. Please note that Agilent's Test and Measurement business has become Keysight Technologies. For more information, go to www.keysight.com.

Installation Note

Part Number N9030-90040
Printed in USA August 2014



N9030-90040

Notice.

The information contained in this document is subject to change without notice.

Keysight Technologies makes no warranty of any kind with regard to this material, including but not limited to, the implied warranties of merchantability and fitness for a particular purpose. Keysight Technologies shall not be liable for errors contained herein or for incidental or consequential damages in connection with the furnishing, performance, or use of this material.

Solid State Disk Drive

Products Affected:	EXA N9010A MXA N9020A PXA N9030A
Serial Numbers:	EXA All with Option PC2 MXA MY/US/SG49100000 or higher or with Option PC2 upgrade PXA All
To Be Performed By:	(X) Agilent Service Center (X) Personnel Qualified by Agilent (X) Customer
Estimated Installation Time:	1.0 Hours
Estimated Adjustment and Verification Time:	0 Hours

This document provides detailed instructions for the use and maintenance of a solid state disk drive in an X-Series signal analyzer. Please be sure to read this entire document before attempting to put this solid state disk drive into use.

Contents

Quantity	Description
1	Installation Note
1	Programmed Solid State Disk Drive (with carrier)
1	Windows Vista License Sticker (COA)

Tools Required

- ☐ Torx Driver T-10
- ☐ USB Mouse
- ☐ USB Keyboard
- ☐ USB storage device with > 2 GB free memory

NOTE

While the solid state disk drive has the Windows XP operating system loaded onto it, the license that accompanies it in this kit is for Windows Vista. This is being done within the scope of our license agreement with Microsoft and is necessary at this time, as the instrument applications software is not supported or qualified with any operating system other than Windows XP.

What you will find in this User's Guide

- Overview
 - Disk Drive Interconnect Life Expectancy
- Putting the Additional Disk Drive Into Service
 - When Ordered As An Upgrade From the Standard Hard Disk Drive
 - When Ordered As An Additional Disk Drive When An Instrument Is Being Used In a Controlled Secure Environment
 - Before the Instrument Has Been Placed Into a Secure Environment
 - After the Instrument Has Already Been Placed In a Secure Environment
- Initializing the Analyzer
- Calibration Data Backup and Restore
- Disk Drive Removal and Installation
- Software Updates
 - FPGA Code Compatibility
- FPGA Code Update
- Instrument Security Information
 - Secure Usage Scenarios
 - Removing an Instrument from a Secure Environment
 - Returning an Instrument to a Secure Environment
 - Removing an Inoperative Instrument from a Secure Environment

Overview

This option provides a removable solid state disk drive for your X-Series Signal Analyzer.

This option could have been purchased for one of the two following reasons:

1. To upgrade an instrument from a standard hard disk drive to a solid state drive.
2. To provide an additional solid state disk drive for use when the original solid state drive must be left inside of a controlled secure environment.

While there may be other reasons to have purchased this solid state disk drive, this document will specifically cover the requirements needed for putting this drive into use for the two reason listed above.

Since this option was ordered as an upgrade only default factory calibration data will have been copied onto this drive at the factory. You will need to follow the procedure included in this document in order to copy the factory calibration data to it from the instrument that it will be used in.

The instrument model and serial numbers, as well as all installed license keys, will not need to be transferred to the new disk drive, as the master copy of all of these is stored on the instrument A7 Midplane board assembly.

NOTE

Should an incorrect version of the X Series calibration file(s) be installed in an instrument, no error messages will be displayed. The instrument may however perform outside of the warranted specifications for that instrument. It is therefore extremely important to ensure that the instrument specific calibration data is properly copied onto this drive before the instrument is used for making any measurements.

Disk Drive Interconnect Life Expectancy

If this upgrade has been ordered to use as an additional solid state disk drive for use when the original solid state drive must be left inside of a controlled secure environment you will want to be aware of the following information with regards to the life expectancy of the interconnect between the removable disk drive and the instrument.

The life expectancy of both the connector on the removable disk drive and the mating connector internal to the instrument is 1,500 cycles. If this is exceeded it is very likely that a failure will occur between these connections. Agilent highly recommends that this cycle limit not be exceeded to prevent an unwanted failure of the instrument.

Putting the Additional Disk Drive Into Service

As mentioned in the [Overview](#) section of this document this option could have been purchased for a number of different reasons. This section will outline what steps are required to properly configure the new solid state disk drive before putting it into use if it was purchased either as a replacement for the standard hard disk drive or for use as an additional disk drive when an instrument is being used in a controlled secure environment.

Before using this solid state disk drive upgrade in any instrument there are two areas of concern that will need to be addressed.

1. The solid state disk drive upgrade will have been shipped with the currently shipping version of the instrument software, which may very well be a different version from what is currently being used in the instrument for which it was purchased.

While an instrument may function properly with different software versions, the software stored on the different measurement boards within the instrument (FPGA code) may not be compatible with both versions. Also, the factory calibration data file used by the different instrument software versions could be incompatible.

2. The solid state disk drive upgrade will have been shipped with a default factory calibration data file. Before using this drive the instrument specific calibration data file will need to be copied to it.

Even if the instrument software version that the solid state disk drive upgrade was shipped with is the same as what is in the instrument the instrument specific factory calibration data will still need to be copied and transferred onto the new disk drive.

Depending on which reason this drive was purchased the instructions for putting it into service will vary. Please follow the appropriate instructions below for the reason that most closely fits why this particular drive was purchased.

When Ordered As An Upgrade From the Standard Hard Disk Drive

1. With the original hard disk drive still installed in the instrument, determine what version of the instrument software is currently installed on it. For instructions on how to verify the currently installed software version see the [Software Updates](#) section in this document for instructions. Record the currently installed software version below.

Instrument S/W Revision: _____

2. Backup the instrument factory calibration data to a USB storage device. See the [Calibration Data Backup and Restore](#) section in this document for instructions.
3. Replace the original instrument disk drive with the solid state disk drive supplied with this kit. See the [Disk Drive Removal and Installation](#) section in this document for instructions.
4. Turn the instrument on with the new solid state disk drive installed and see the [Initializing the Analyzer](#) section in this document for instructions.
5. Ignore any hardware related error messages that might appear at this time, as they may be related to software version incompatibilities that will be resolved in the following steps of this procedure.

6. Determine what version of the instrument software is currently installed on the new solid state disk drive. Record the installed software version below.

Instrument S/W Revision: _____

7. Compare the instrument software revision as recorded in [step 6](#) to that which was recorded in [step 1](#).

If the instrument software versions are exactly the same skip to [step 8](#) in this procedure.

If the instrument software revision recorded in [step 6](#) is older than that which was recorded in [step 1](#) update the instrument software on the solid state disk drive to the latest version. See the [Software Updates](#) section of this document for instructions on how to obtain and install the latest instrument software revision.

If the instrument software revision recorded in [step 6](#) is newer than that which was recorded in [step 1](#) update the instrument FPGA code. See the [FPGA Code Update](#) section in this document for instructions on how this is done.

8. Restore the instrument factory calibration data that was previously backed up from the original disk drive. See the [Calibration Data Backup and Restore](#) section in this document for instructions.
9. The instrument is now ready for use.

When Ordered As An Additional Disk Drive When An Instrument Is Being Used In a Controlled Secure Environment

If the instrument that this solid state disk drive upgrade was purchased for has not yet been placed in the controlled secure environment follow the steps below under the heading [Before the Instrument Has Been Placed Into a Secure Environment](#) to properly configure the drive for use. If the instrument is already in the controlled secure environment follow the steps below under the heading [After the Instrument Has Already Been Placed In a Secure Environment](#).

Solid State Disk Drive

Before the Instrument Has Been Placed Into a Secure Environment

1. With the original disk drive still installed in the instrument, verify that the instrument software is the latest version. For instructions on how to verify the currently installed software version, as well as how to know what the latest version is, see the [Software Updates](#) section in this document for instructions.
2. If the instrument software is not the latest version update the instrument software to the latest version available. See the [Software Updates](#) section of this document for instructions.
3. Once the instrument software has been updated backup the instrument factory calibration data to a USB storage device. See the [Calibration Data Backup and Restore](#) section in this document for instructions.
4. Replace the original instrument disk drive with the additional disk drive supplied with this kit. See the [Disk Drive Removal and Installation](#) section in this document for instructions.
5. Turn the instrument on with the additional disk drive installed. See the [Initializing the Analyzer](#) section in this document for instructions.
6. Verify that the instrument software on the additional disk drive is the same version that is on the original disk drive.
7. If the instrument software on the additional disk drive is not the same as what is on the original disk drive update the instrument software on this drive to the latest version available as well. See the [Software Updates](#) section in this document for instructions.
8. Once the instrument software has been updated restore the instrument factory calibration data that was previously backed up from the original disk drive. See the [Calibration Data Backup and Restore](#) section in this document for instructions.
9. Write the instrument model number and serial number on the original disk drive and reinstall it in the instrument.
10. Write the instrument model and serial number on the additional disk drive and place it back in the static safe bag that it was shipped in and place it in a safe place until it is needed again.
11. The instrument is now ready for use.

After the Instrument Has Already Been Placed In a Secure Environment

If the instrument that this additional disk drive is intended to be used with is already inside of a controlled secure environment you will not be able to transfer the instrument specific factory calibration data to the additional disk drive. When the instrument is eventually removed from the controlled secure environment, with the original disk drive left inside the controlled secure environment, follow the procedure below to put the additional disk drive into service.

1. Install the additional disk drive into the instrument and power it on. See the [Initializing the Analyzer](#) section in this document for instructions.
2. Verify that the instrument software is the latest version. For instructions on how to verify the currently installed software version, as well as how to know what the latest version is, see the [Software Updates](#) section in this document for instructions.
3. Since the instrument specific factory calibration data file is not available to be copied onto this additional disk drive a complete instrument calibration, including all adjustments, will need to be performed.
4. When the instrument is to be placed back into the controlled secure environment backup the factory calibration data to a USB storage device. See the [Calibration Data Backup and Restore](#) section in this document for instructions.
5. Place a copy of the latest instrument software, as verified in [step 2](#) above, onto the same USB storage device.
6. Remove the additional disk drive from the instrument and write the instrument model and serial number on it for future identification. Place the additional disk drive back in the static safe bag that it was shipped in and place it in a safe place until it is needed again.
7. Return the instrument to the controlled secure environment along with the USB storage device.
8. Re-install the original disk drive into the instrument and turn it on.
9. Verify that the instrument software on the original disk drive is the same version that was just placed on the USB storage device.
10. If the instrument software on the original disk drive is not the same as what was just placed on the USB storage device update the instrument software on this drive using the software installed on the USB storage device. See the [Software Updates](#) section in this document for instructions.
11. Once the instrument software has been updated restore the new instrument factory calibration data from the previously backed up calibration data file on the USB storage device. See the [Calibration Data Backup and Restore](#) section in this document for instructions.
12. The instrument is now ready for use and the USB storage device can be properly disposed of if necessary.

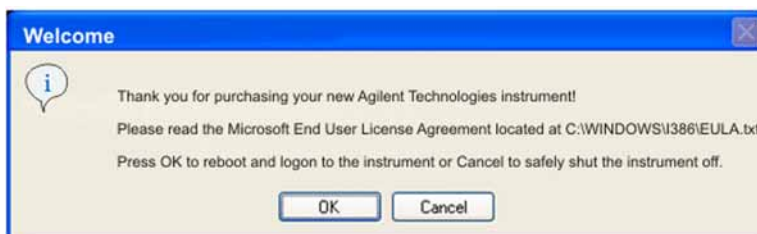
Initializing the Analyzer

NOTE During the initial power-on process, the instrument turns off and restarts several times. This *only* happens during the initial installation process.

1. Connect the mouse to one of the analyzer's USB ports.

NOTE The analyzer can require more than 5 minutes to power-on. This is affected by Windows XP start-up requirements.

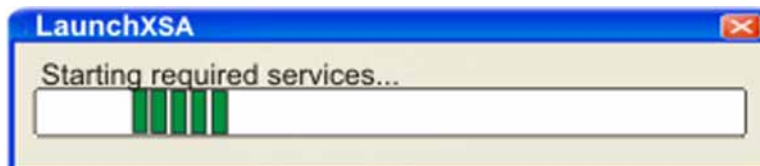
2. The Agilent Technologies screen appears followed by a screen that automatically loads the Windows operating system.
3. The analyzer performs the following steps:
 - Windows XP Startup window
 - Black screen
 - Windows Please wait message window
 - Blue Agilent window
 - The following Welcome window appears giving you information about the End-User License Agreement.



Chose OK to continue, or Cancel to turn off the instrument before initializing the software.

CAUTION After launching the setup, do not turn off the instrument or remove power before the setup routine completes and the system restarts. Turning off the instrument may corrupt the system and the application may not operate.

4. Click **OK**. When the instrument restarts, the following message window appears:

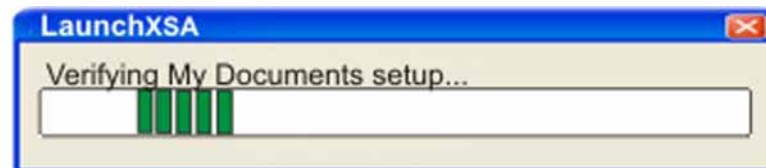


5. This window appears and covers the LaunchXSA window.



NOTE If you do not check the “Do not show this message again” check box, this message will be displayed each time the analyzer is turned on. No application will start while this message is displayed. Before continuing, make sure that you carefully read the Anti-Virus message and determine what action is appropriate.

6. Click **Continue**.
7. Messages similar to the following continue to appear:



- The system reboots.
- Several required processes continue.
- The system reboots.
- The XSA application initializes.

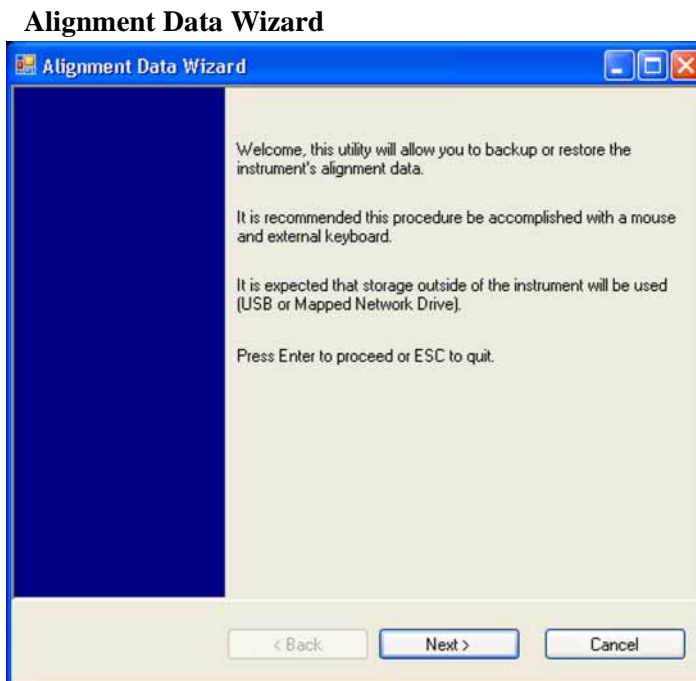
Calibration Data Backup and Restore

In order to maintain the same level of instrument performance and measurement accuracy with the additional disk drive that it has with the original disk drive the instrument specific factory calibration data will need to be copied and transferred to the new drive. The following procedures will outline the steps required to do this.

Backup Calibration Data

1. With the instrument turned on and the signal analyzer application running as normal, connect a USB mouse to one of the instrument front panel USB ports.
2. Locate a USB storage device. Perform a virus scan on this device before use.
3. On the front panel of the instrument press **System, Alignments, Backup or Restore Align Data...**
4. The Alignment Data Wizard window as shown in [Figure 1](#) will appear.

Figure 1



5. Follow the on-screen instructions to backup the calibration data to the USB storage device.

Restore Calibration Data

1. With the instrument turned on and the signal analyzer application running as normal, connect a USB mouse to one of the instrument front panel USB ports.
2. Connect the USB storage device that the calibration data was previously saved on to the other front panel USB port.
3. On the front panel of the instrument press **System, Alignments, Backup or Restore Align Data...**
4. The Alignment Data Wizard window as shown in [Figure 1](#) will appear.
5. Follow the on-screen instruction to restore the calibration data from the previously saved file on the USB storage device.

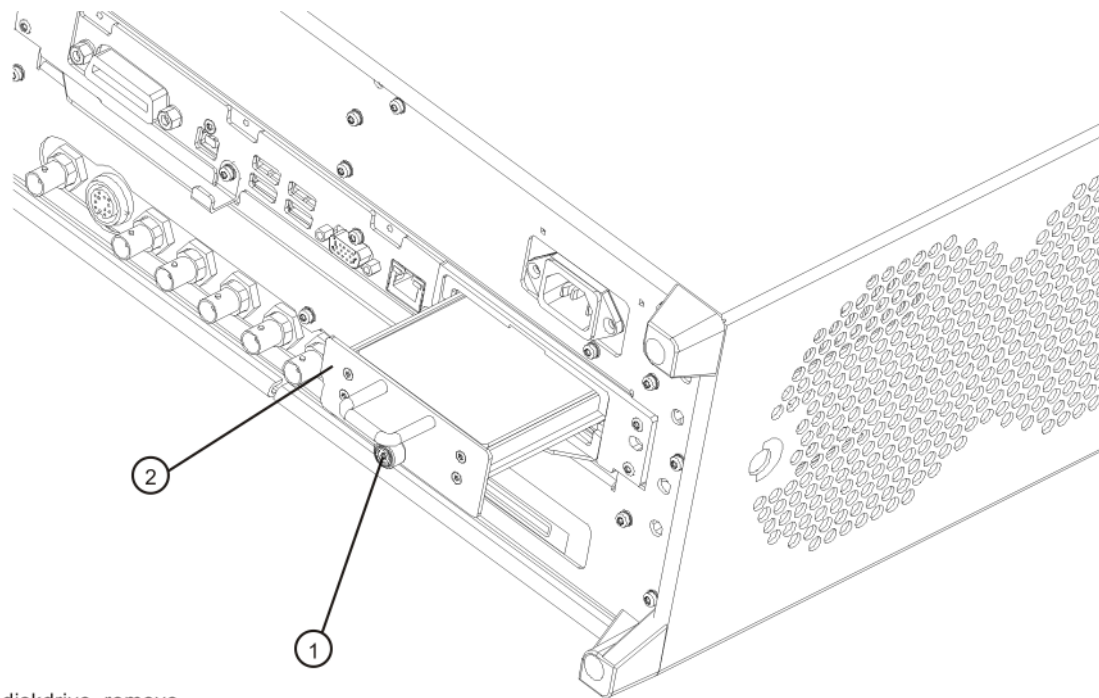
Disk Drive Removal and Installation

CAUTION

Electrostatic discharge (ESD) can damage or destroy electronic components. All work on electronic assemblies should be performed at a static-safe workstation. Refer to the documentation that pertains to your instrument for information about static-safe workstations and ordering static-safe accessories.

1. Turn the instrument off and remove the AC power cord.
2. Refer to [Figure 2](#). Locate and remove the existing disk drive carrier assembly **(2)** from the instrument by loosening the rear panel screw **(1)**.

Figure 2 Replacing the Disk Drive Carrier Assembly



3. Replace the disk drive carrier assembly **(2)** into the instrument and tighten the screw **(1)** to 9 inch-pounds.

Software Updates

The currently installed instrument software version can be easily determined by pressing the following front panel keys:

System, Show, System

The software revision can be found on this screen as the:

Instrument S/W Revision

Updating The Instrument Software:

If an instrument software update is required, the latest revision of the X-Series signal analyzer software may be downloaded from:

http://www.agilent.com/find/xseries_software

FPGA Code Compatibility

One of the main reasons that the instrument application software must be the same version on all disk drives used in a particular instrument, in addition to factory calibration data compatibility issues, is that there is FPGA program code on multiple assemblies inside the instrument that must be compatible with the version of instrument software being used. The only way to ensure compatibility for all disk drives is to use the same instrument application software on all drives.

FPGA Code Update

There is FPGA program code on many different assemblies inside of the instrument, and all of these must be a compatible version with the instrument software revision. In order to ensure that this requirement is met you need to run an FPGA update program. If this program detects that there are assemblies that need to be updated it will update them to the correct version.

NOTE	Once you start the FPGA programming process you MUST NOT interrupt the process for any reason. This would include turning the instrument off or unplugging the power cord to the instrument. Doing so will result in an inoperative instrument, requiring the affected assembly to be replaced.
-------------	--

Updating the Instrument FPGA Code

1. Connect a USB mouse and keyboard to the instrument front panel USB ports.
2. Using the mouse, click **Start, Log Off, Log Off**.
3. Relogin as “administrator”. The default password is “agilent4u”.
4. Using the mouse, click on Start and select Explore to start Windows Explorer. Navigate to the following folder:

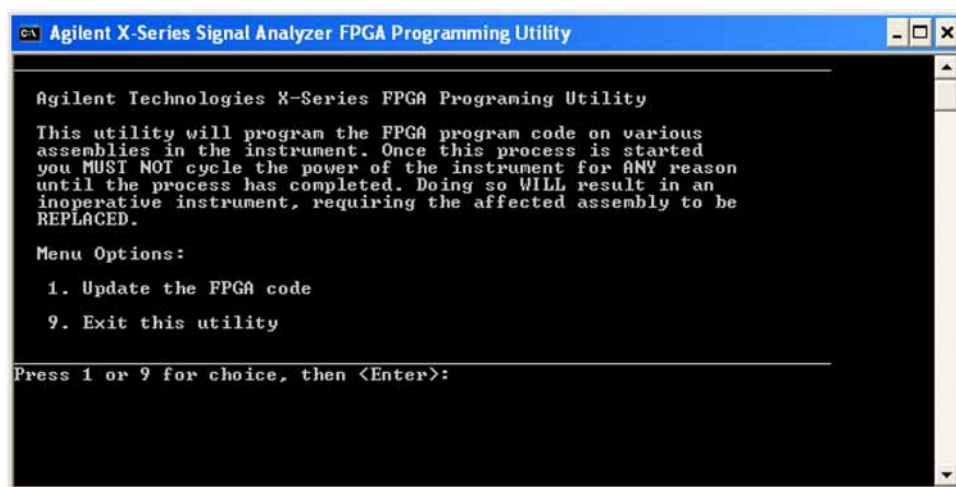
C:\Program Files\Agilent\SignalAnalysis\Physics

5. In this folder find and execute the file named:

FPGA_Prog.bat

6. The FPGA Programming Utility will start and a window as shown in [Figure 3](#) will appear.

Figure 3 **FPGA Programming Utility**



7. To program the FPGA code enter 1 and press **Enter**. You will need to confirm this selection by pressing **1** and **Enter** one more time.
8. The programming of the FPGA code could take a few minutes to complete. Once it has finished the instrument will reboot itself to use the new code.

Instrument Security Information

Information on the X-Series Signal Analyzer instrument security features and the instrument volatility can be found at:

<http://www.agilent.com/find/security>

Secure Usage Scenarios

The following information is meant to serve as a guideline when using the removable disk drive feature in an X-Series Signal Analyzer along with an additional disk drive option. How you choose to ultimately use this is up to you and your security requirements.

Removing an Instrument from a Secure Environment

If an instrument that is being used inside of a controlled secure environment needs to be removed for servicing, calibration, or any other non-secure use outside of the controlled secure environment perform the following procedure:

1. Remove the disk drive assembly from the instrument. See the [Disk Drive Removal and Installation](#) section of this document for removal instructions.
2. Verify that the disk drive is marked with the model and serial number of the instrument that it has been removed from and place it inside of a static safe bag and place in a safe place.
3. All potential user data has been removed from the instrument and it can now be removed from the secure environment.
4. Once the instrument has been removed from the secure environment install the additional disk drive with the model and serial number of the instrument recorded on it.
5. The instrument is now ready for either use outside of the secure environment or for servicing.

Returning an Instrument to a Secure Environment

When the instrument is returned from either servicing, calibration, or any other non-secure use, perform the following procedure before returning it to a controlled secure environment:

1. Backup the instrument factory calibration data onto a USB storage device. See the [Calibration Data Backup and Restore](#) section of this guide for instructions.
2. Remove the disk drive assembly from the instrument. See the [Disk Drive Removal and Installation](#) section of this document for removal instructions.
3. Verify that the disk drive is marked with the model and serial number of the instrument that it has been removed from and place it inside of a static safe bag and place in a safe place.
4. Return the instrument to the controlled secure environment along with the USB storage device that the instrument specific factory calibration data was backed up to.

Solid State Disk Drive

5. Install the original disk drive with the model and serial number of the instrument recorded on it and turn the instrument on.
6. Restore the instrument factory calibration data that was previously backed up onto the USB storage device. See the [Calibration Data Backup and Restore](#) section of this guide for instructions.
7. The instrument is now ready for use inside of the secure environment and the USB storage device can be properly disposed of if necessary.

Removing an Inoperative Instrument from a Secure Environment

Should the instrument fail for any reason while inside a controlled secure environment perform the following steps to safely remove the instrument:

1. Remove the disk drive assembly from the instrument. See the [Disk Drive Removal and Installation](#) section of this document for removal instructions.
2. Verify that the disk drive is marked with the model and serial number of the instrument that it has been removed from and place it inside of a static safe bag and place in a safe place.
3. All potential user data has been removed from the instrument and it can now be removed from the secure environment.
4. Once the instrument has been removed from the secure environment install the additional disk drive with the model and serial number of the instrument recorded on it.
5. If the instrument failure persists with the additional disk drive the instrument should be sent in for repair to an Agilent Authorized service facility, and the rest of this procedure can be skipped.
6. If the instrument will now function properly with the additional disk drive installed, the cause of the failure was most likely the original disk drive. The instrument can now be returned to the secure environment and the original disk drive will need to be disposed of according to the secure environment requirements. However, it is recommended that another additional disk drive be purchased to replace the defective drive before the instrument is returned to the secure environment. This will allow for the procedure of putting the new additional disk drive into service to be completed prior to returning the instrument to the secure environment.

Utilities, Adjustments, and Performance Verification Tests

Utilities Required

None

Adjustments Required

None

Performance Testing Required

None

For assistance, contact your nearest Agilent Technologies Sales and Service Office. To find your local Agilent office access the following URL, or if in the United States, call the following telephone number:

<http://www.agilent.com/find/assist>

1-800-829-4444 (8 am - 8 pm ET, Monday - Friday)

Solid State Disk Drive