

Keysight Technologies

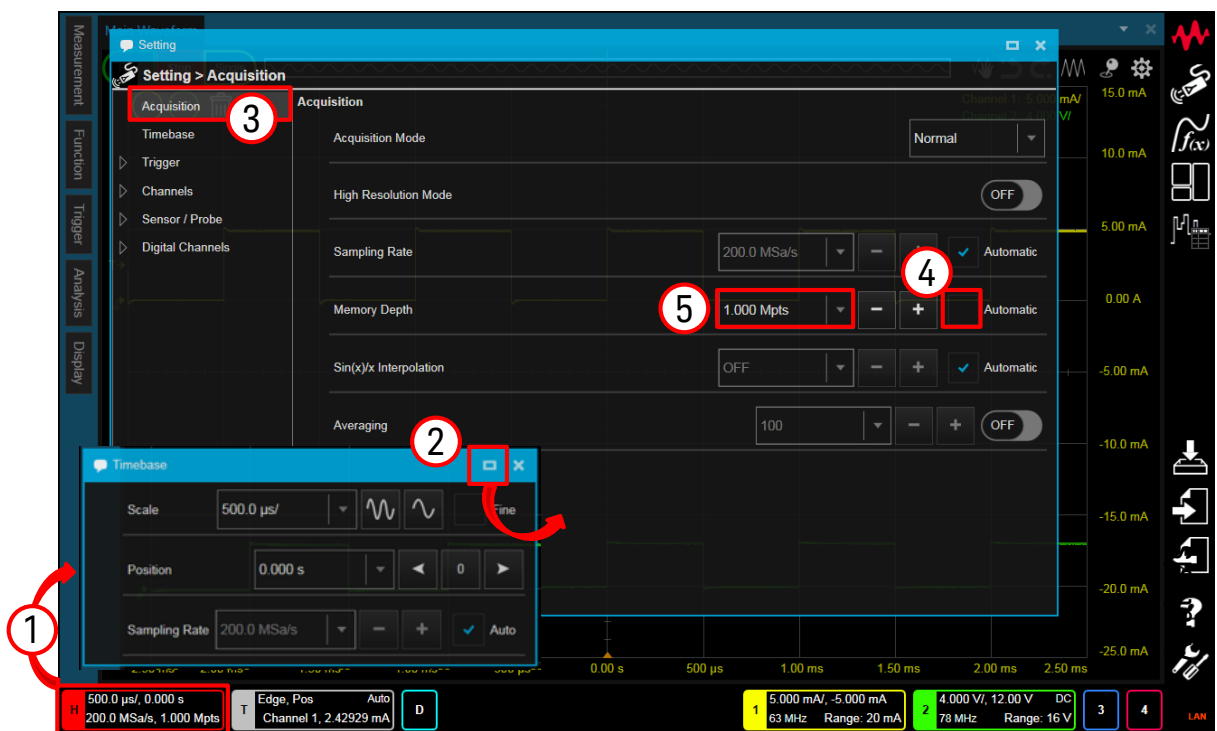
CX3300 Current Waveform Analyzer

Quick Operation Guide

How to change the memory depth



1. Click on “Horizontal summary” to open the “Timebase” mini dialog box.
2. Click on the “□” at the upper right of the mini dialog box to open the Setting dialog box.
3. Select “Acquisition”.
4. Un-check “Automatic”.
5. Set the “Memory Depth”.



Horizontal Summary