

UPGRADE INSTRUCTIONS

RF OUT ONLY UPGRADE

Agilent 8960 Series 10 Wireless Communications Test Set E5515CU: Option 006 upgrade kit for E5515C

NOTE: You must install the E1962B or E1963A Test Application and update any other Test Applications to the latest revisions before changing the hardware included with the upgrade kit. Do not switch to the E1962B or E1963A Test Applications without changing the hardware included with the upgrade. The upgrade will fail if you change the order of these steps.

STEP 1: Install or upgrade the E1962B or E1963A Test Application and license. To redeem a license for the test applications go to www.agilent.com/find/8960ta and click on the, Retrieve your license here link.

STEP 2: Upgrade all existing Test Applications to the latest revision and switch to a new revision. Existing Test Applications must be upgraded to work with the new RF Interface that is included in the upgrade kit.

STEP 3: Turn off the test set. Do not power up the test set until you have installed the new RF Interface module.

STEP 4: Remove the Front Panel Assembly from the chassis. Refer to the *Disassembly Procedures* for Front Panel Assemblies in the *Troubleshooting and Repair* section www.agilent.com/find/8960toolbox

STEP 5: Remove the RF Interface module from the chassis. *Refer to Installation Instruction E5515-90056.*

STEP 6: Remove the RF IN/OUT cable (E5515-21046) from the old RF Interface and attach it to the new RF Interface. Tighten the 5/16" socket with a torque wrench set at 9 in. lbs. *Refer to Installation Instruction E5515-90056.*

STEP 7: Reassemble the front panel using the new sub panel supplied in the kit. Refer to the *Disassembly Procedures* provided in the Appendix A. All screws in the Front Panel assemble are tighten to a torque of 9 in. lbs.

UPGRADE INSTRUCTIONS

STEP 8: Replace the reassembled front panel onto the rest of the instrument. Tighten the T-20 mounting Torx with a torque wrench set at 21 in. lbs.

STEP 9: Position the LAN cable, using the cable clamp from the kit, in accordance with **Figure 7** in Appendix A.

STEP 10: Install the new RF Interface module included with the kit. Refer to *Installation Instruction E5515-90056*.

NOTE: When re-installing the RF Interface assembly, always tighten the 5/8 - 24 HEX nuts that secure the RF IN/OUT and RF OUT connectors BEFORE tightening the 3 Torx RF Interface mounting screws.

STEP 11: Power up the test set, you can switch to the E1962B or E1963A Test Application once the power up is complete.

NOTE: If the test set does not power up because of an inoperative processor, replace the processor first; then use the Agilent 8960 File Utility to re-install the Test Application. The File Utility is part of any TA or LA Web Based Install. Select the TEST SET RECOVERY function on the bottom of the OPTIONS screen. Follow the instructions on the screen.

STEP 12: Remove all old Test Applications from the test set. Removing older Test Application revisions prevents improper operation of the test set. The test set must still be connected to the PC to use these tools.

- Run the Agilent 8960 File Utility. www.agilent.com/find/8960toolbox
- Select the **Direct Connection (Single test set)** button.
- Select the **Test Application** tab.
- Highlight the old revision(s) of Test Application(s) and select the **Delete From test set** button. **Do not delete the Test Application just loaded.**

UPGRADE INSTRUCTIONS

APPENDIX A



Figure 1:

- Take the front knob off using a 1/16 in. allen wrench.

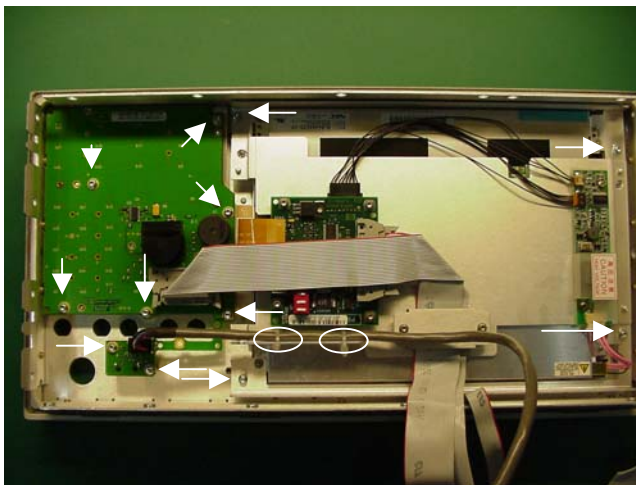


Figure 2:

- Remove the mounting screws from the key board assembly (qty 8) and the flat panel display (qty 4).
- Disconnect the ribbon cable from the keyboard assembly and clip off the wire ties holding the LAN cable to the flat panel display assembly.
- Lift out each assembly.

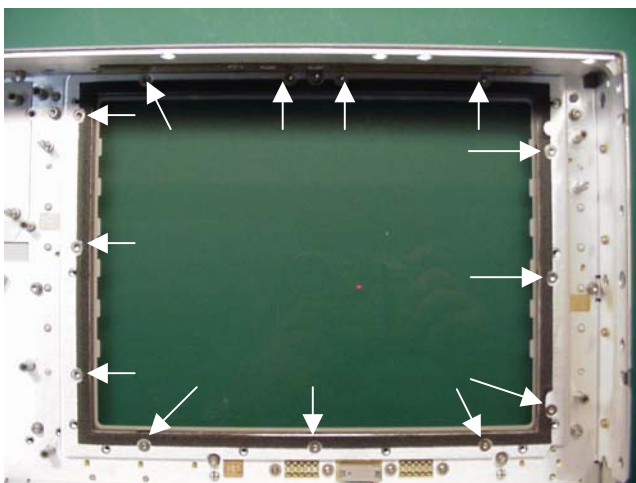


Figure 3:

- Remove the 13 screws holding the glass frame.

UPGRADE INSTRUCTIONS

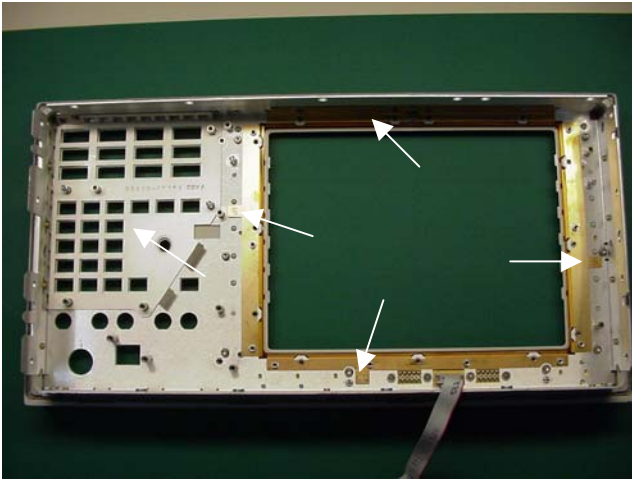


Figure 4:

- Use extreme care removing the RFI gaskets.
- There are 4 around the windshield.
- There is 1 for the key pads.

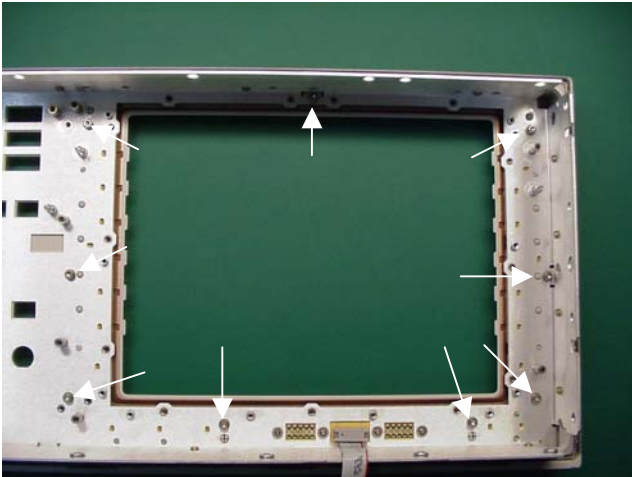


Figure 5:

- Remove the 9 screws holding the front bezel

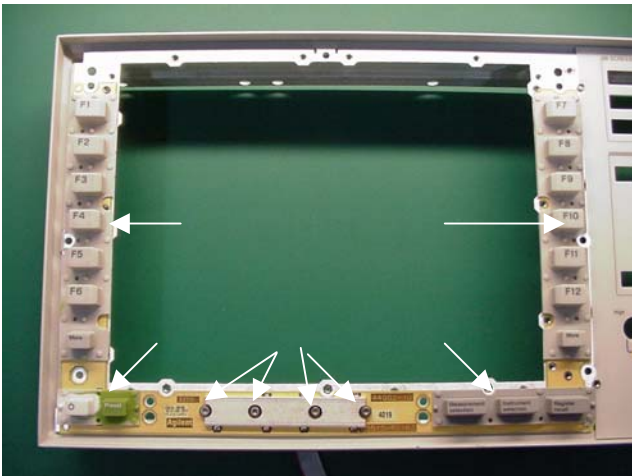


Figure 6:

- Remove the soft keys from the frame.
- Remove the 4 screws holding the Display Keyboard assembly and remove it from the front frame.

UPGRADE INSTRUCTIONS

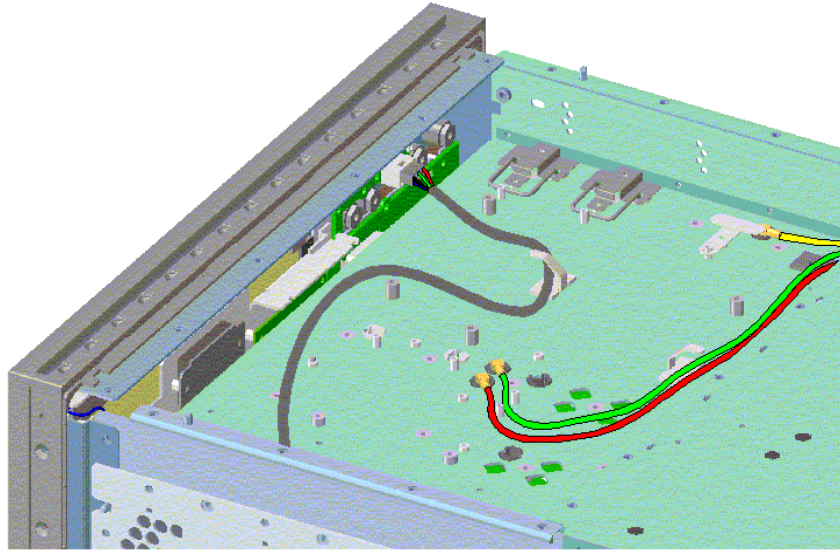


Figure 7:

The cable must be routed as seen in the figure above.

Questions and concerns contact Agilent Technologies:

Phone: (800) 827-3848 (U.S. & Canada)
(509) 921-3848 (International)

Fax: (509) 921-3514

E-mail: spokane_service@agilent.com

Web: www.agilent.com/find/8960support



E5515-90212

Revision Date: 03/07/05
Printed in U.K.

