



Agilent N4017A
Bluetooth® Graphical
Measurement Application

Installation Guide



Agilent Technologies

www.agilent.com/find/N4017A/

This Installation Guide

Use this Installation Guide to install the N4017A *Bluetooth* GMA on your PC. Before beginning the installation and connection ensure you have the following items:

- The installation CD-ROM.
- Installation PC meeting the minimum requirements - see GMA box cover.
- Agilent N4010A with licensed options 101 *Bluetooth*, Option 110 Connectivity.
- Installed I/O libraries. You can download and install the Agilent I/O libraries version 14.1 (or greater) from <http://www.agilent.com/find/iosuite/>
- USB 2.0, LAN or GPIB connection from your PC to the N4010A Test Set.

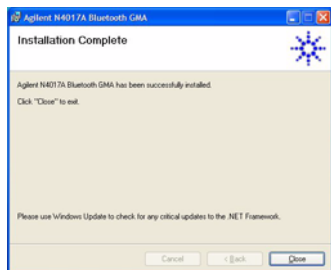
Installing the N4017A GMA application on your PC as follows:

1. We recommend closing all applications on the installation PC.
2. Insert the Installation CD-ROM in the PC CD/DVD drive.
3. Click **Next** on the Welcome screen to continue.

Note: The GMA installation requires that Microsoft .NET Framework version 1.1 Service Pack 1 is installed on your PC. The installer checks your PC.

.NET Framework not found - - Installer halts and asks you to install the Framework. The Microsoft .NET Framework can be downloaded from:
<http://msdn.microsoft.com/netframework> or the N4010A CD-ROM (Microsoft .NET Framework 1.1 directory)


4. Review the terms of the license agreement, select the appropriate radio button and click **Next** to continue.
5. Click **Next** to accept the default *C:\Program Files\Agilent\N4017A Bluetooth GMA* install path (recommended) or select **Change...** and enter the new path.
6. Click **Next** to continue.
7. Click **Next** to start the installation process.
8. Click **Finish** when the Install Shield Wizard complete screen is displayed to close the installation.

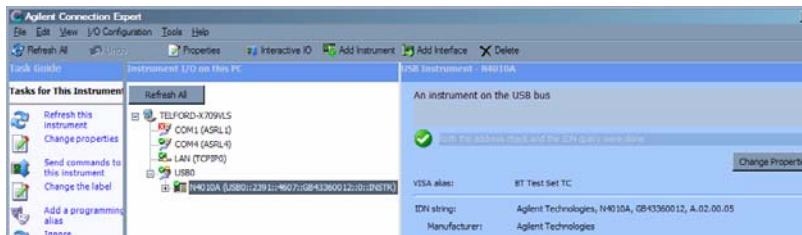


Note: A LAN Crossover cable is required if you intend to use the LAN interface to connect directly to the Test Set without a LAN bridge/switch in circuit.

Configuring the I/O system

Before starting the Bluetooth GMA, configure the I/O system to ensure communication between the PC and N4010A Test Set.

1. Click the Agilent IO icon  located in your PC tool tray.
2. Select **Agilent Connection Expert** from the Popup menu to display the new connection screen.



3. Select the interface you have used to connect your PC to the Test Set and click Add instrument.
4. Complete the details in the entry field and test the connection.
5. Add additional Test Sets as required.

Running the N4017A Bluetooth GMA

- Use the Start menu (**Start > All Programs > Agilent N4017A Bluetooth GMA > N4017A Bluetooth GMA**) or desktop icon to launch the GMA.



- Highlight the Test Set you want to use in the Instrument Selector window and click **Select Instrument**. If no license is found you cannot select a Test Set but can start the GMA alone by clicking **Demo Mode**.
- The splash screen indicates the GMA is loading.



Licensing your N4017A Bluetooth GMA

An internet connection is required to carry out the license redemption procedure. Before beginning you should ensure you have:

- Order Number.
- Entitlement Certificate Number.

Both of these numbers are printed in the upper right-hand corner of the Software Entitlement Certificate shipped with your software. When ready, visit the web site <http://www.agilent.com/find/softwarelicense> and follow the detailed instructions.

If you require further assistance, contact the N4010A/N4017A support team by E-mail at: N4010A_support@agilent.com.

