

Models 6690A-6692A System DC Power Supply

Minimize Your Testing Downtime With This
Reliable, High Power DC Supply



- Low ripple & noise
- Fast up-and-down programming
- High accuracy current programming and read back
- Industry standard SCPI programming commands
- Analog programming
- Analog monitoring
- Parallel connection for more current output
- Full protection from overcurrent, overvoltage overtemperature
- Remote sense
- Electronic calibration

You Have Better Things to Worry About Than DC Power.

Will failure of your DC power supply delay your testing?

Will failure of your DC power supply damage your DUT?

Will failure of your DC power supply keep you from meeting your customers' needs?

The 6690A Series is DC power you can depend on.

At the 6600 watt power level, it's not easy to design a reliable DC power supply. Keysight Technologies, Inc. builds in ruggedness and durability, to meet even the grueling needs of continuous stress testing in harsh environments. During the development phase, Keysight power supplies undergo a battery of environmental tests such as 8-days temperature profile. Other tests include humidity, altitude, shock and vibration, ESD, ac line tests, EMC and RFI. The power supplies are designed with built-in margin so that they can meet their specifications over time, under all conditions, and withstand peak stress.

Protect your DUT

At these high power levels, you want to protect your expensive DUT. Whether your DUT is a rack of data storage control units, or a base station ready for deployment, it is quite valuable and well worth recovery. The 6690 Series has a wide range of protection features available to protect your DUT from damaging conditions.

- Overvoltage protection
- Overcurrent protection
- Overtemperature protection
- Programmable shut-down
- Error status reporting
- DFI-RI
- External TTL shut-down input
- Linked power supply shutdown

Easy GPIB programming

All Keysight system power supplies have SCPI (Standard Commands for Programmable Instruments) based command sets. This means that the same function would have the same command for any instrument. For example, to program the output voltage on two power supplies, the command would be the same, and to measure the output voltage the command would be the same for the Keysight system power supply as any SCPI voltmeter. Using SCPI instruments makes your software simpler and quicker to design.

Easy system configuration and enhancement

The 6600 watt DC power supplies of the Keysight 6690 Series are the same size as the 5000 watt power supplies of the Keysight 6680 Series. This means that system power can be upgraded without needing more rack space. All programming commands and features are 100% compatible between both series. Also, up to three same model 6690 Series power supplies can be connected in parallel, to provide additional power as your needs expand.

Manual power supply control

Non-automated testing in R&D, or power for the repair bench in manufacturing, are no problem for the 6690 Series. The front panel has everything that is needed to control both the power supply output and the associated protection features. Both the output voltage and current can be easily monitored on the front panel meters.

Analog programming and monitoring

Analog signals can be used to program the output voltage and current. This allows custom waveforms to be generated, and is also useful for process control applications. The output current and voltage can be monitored via analog signals on the rear panel, for custom interface applications, and process control implementations.

Specifications

Parameter	Keysight model number			
		6690A	6691A	6692A
Output ratings				
Voltage		0-15 V	0-30 V	0-60 V
Current*				
*Derated linearly 1%/°C from 40 to 55 °C		0-440 A	0-220 A	0-110 A
Programming accuracy (@ 25 ±5 °C)				
Voltage	0.04% +	15 mV	30 mV	60 mV
Current	0. 1% +	230 mA	125 mA	65 Ma
Ripple & noise				
(from 20 Hz to 20 MHz with outputs ungrounded, or with either output terminal grounded)				
Constant Voltage	rms	2.5 mV	2.5 mV	1.5 mV
Constant Voltage	p-p	15 mV	25 mV	25 mV
Constant Current**	rms	200 mA	50 mA	30 mA
**With load inductance > 5 µH				
Readback accuracy				
(from front panel or over GPIB with respect to actual output @ 25 ±5 °C)				
Voltage	0.05% +	22.5 mV	45 mV	90 mV
±Current	0.1% +	300 mA	165 mA	80 mA
Load regulation				
(change in output voltage or current for any load change within ratings)				
Voltage	0.002% +	650 µV	1.1 mV	2.2 mV
Current	0.005% +	40 mA	17 mA	9 mA
Line regulation				
(change in output voltage or current for any line change within ratings)				
Voltage	0.002% +	650 µV	650 µV	650 µV
Current	0.005% +	40 mA	17 mA	9 mA
Transient response time				
(for the output voltage to recover to within 150 mV following any step change from 100% to 50% or 50% to 100% of the rated output current): < 900 µs				

Supplemental characteristics	
DC floating voltage	Output terminal can be floated up to ± 60 VDC from chassis ground
Remote sensing	Up to half the rated output voltage can be dropped in each load lead. The drop in the load leads subtracts from the voltage available at the load.
Command processing time	Average time required for the output voltage to begin to change following receipt of digital data is 20 ms for power supplies connected directly to the GPIB.
Modulation:	(analog programming of output voltage and current): Input signal: 0 to -5 V for voltage, and 0 to $+5$ V for current. Input impedance: 30 k Ω or greater.
AC input (47 to 63 Hz)	180 to 235 VAC (line-to-line 3 phase) 36 Arms maximum worst case, 28 Arms nominal; 360 to 440 VACX, 18 Arms maximum worst case, 14 Arms nominal. (Maximum line current includes 5% unbalanced phase voltage condition).
CD ships with	IVI and VXI Plug n Play drivers, Operating, Programming, Service and Quick Start Guides.
Input power	9000 VA and 7950 W maximum; 175 W at no load.
Size	425.5 W x 221.5 H x 674.7 mm D (16.75 x 8.75 x 25.56 in).

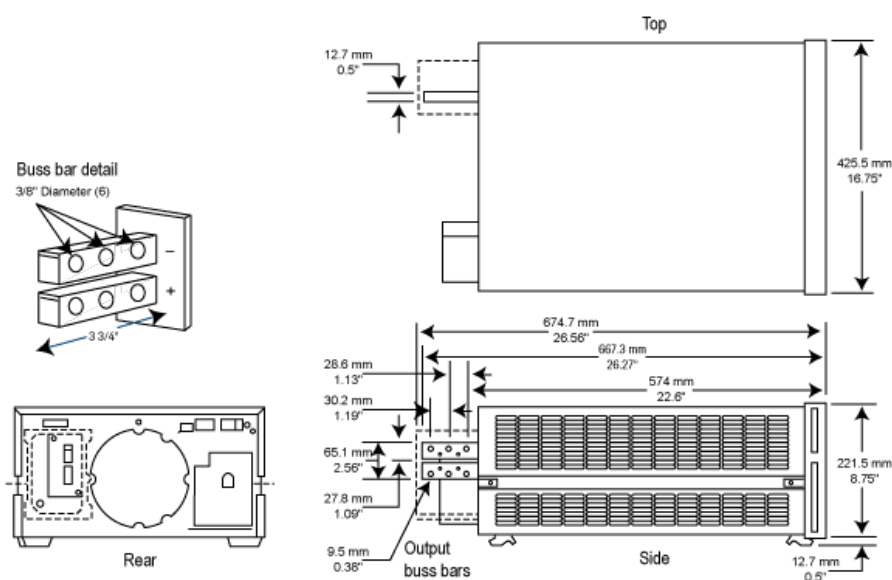
Specifications (at 0 to 55 °C unless otherwise specified)	6690A	6691A	6692A	
Supplemental Characteristics (Non-warranted characteristics determined by design that are useful in applying this product)				
Ripple and noise constant current mode from 20 Hz to 20 MHz				
rms	200 mA	50 mA	30 mA	
Average programming resolution				
Voltage	4.1 mV	8.1 mV	16 mV	
Current	118.5 mA	59 mA	30 mA	
OVP	90 mV	170 mV	330 mV	
Output voltage programming response time (excludes command-processing time)	45 ms	60 ms	100 ms	
Full-load programming rise or fall time (10 to 90% or 90 to 10%, resistive load)				
Output common-mode noise current	rms	3 mA	3.5 mA	4 mA
(to signal-ground binding post)	peak-to-peak	20 mA	20 mA	25 mA

Ordering information

Option 208	180 to 235 VAC, 3 phase, 47 to 63 Hz
Option 400	360 to 440 VAC, 3 phase, 47 to 63 Hz
Option 602	Two bus bar spacers for paralleling power supplies (p/n 5060-3514)
Option 1CM028A	Rackmount flange kit 88.1 mm H (3U) and 132.6 mm H (2U) - 4 brackets (5U total)
Option 1CP014A	Double rackmount flange and Handle Kit 88.1 mm H (2U) and 132.6 mm H (3U)

Accessories

5065-6935	Replacement fuse kit for 360-440 VAC line.
5065-6934	Replacement fuse kit for 180-235 VAC line.
E3663AC	Support rails for Keysight rack cabinets.
5080-2148	Serial link cable 2 m (6.6 ft.)



Keysight models: 6690A, 6691A, 6692A

Learn more at: www.keysight.com

For more information on Keysight Technologies' products, applications or services, please contact your local Keysight office. The complete list is available at: www.keysight.com/find/contactus

