

E6610A GUI Software Install Instructions

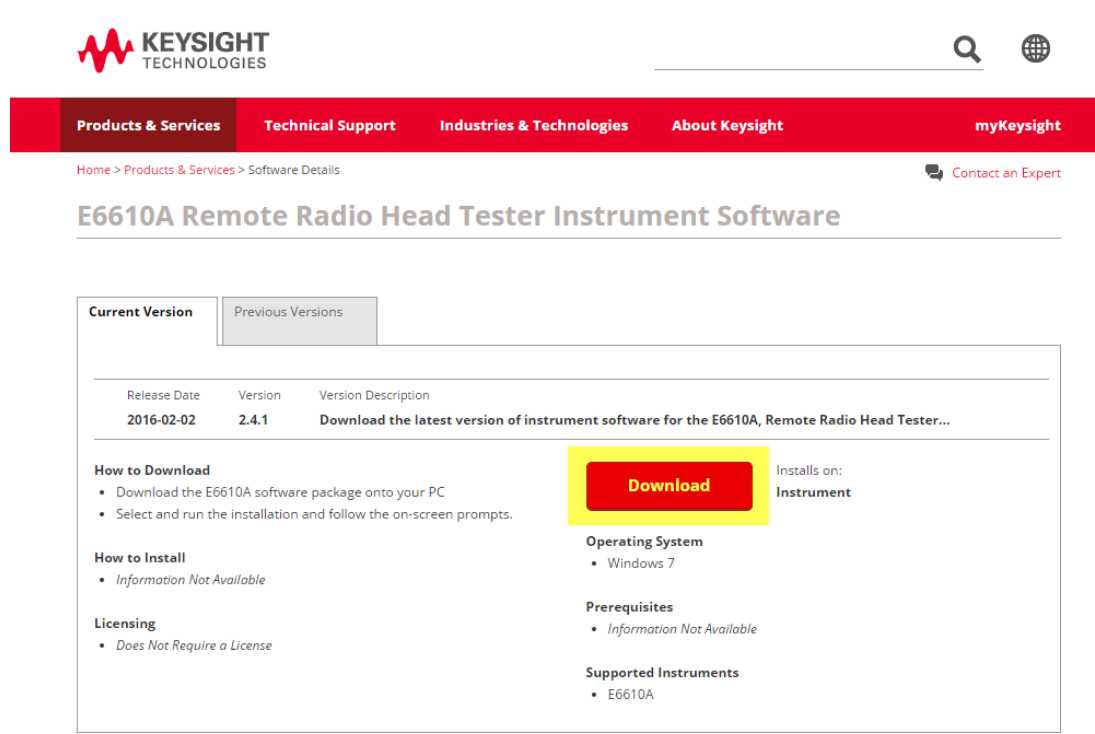
Download the Software

Note: The E6610A GUI software runs on the Windows 7 operating system.

Download the E6610A GUI software from:

http://www.keysight.com/find/E6610A_Software

Click on the Download button and save the file to the desired location on your PC.



The screenshot shows the Keysight website interface for the E6610A Remote Radio Head Tester Instrument Software. The page features a red navigation bar with links for Products & Services, Technical Support, Industries & Technologies, About Keysight, and myKeysight. Below the navigation bar, there is a breadcrumb trail: Home > Products & Services > Software Details. The main heading is "E6610A Remote Radio Head Tester Instrument Software".

There are two tabs: "Current Version" (selected) and "Previous Versions". Below the tabs is a table with the following data:

| Release Date | Version | Version Description |
|--------------|---------|--|
| 2016-02-02 | 2.4.1 | Download the latest version of instrument software for the E6610A, Remote Radio Head Tester... |

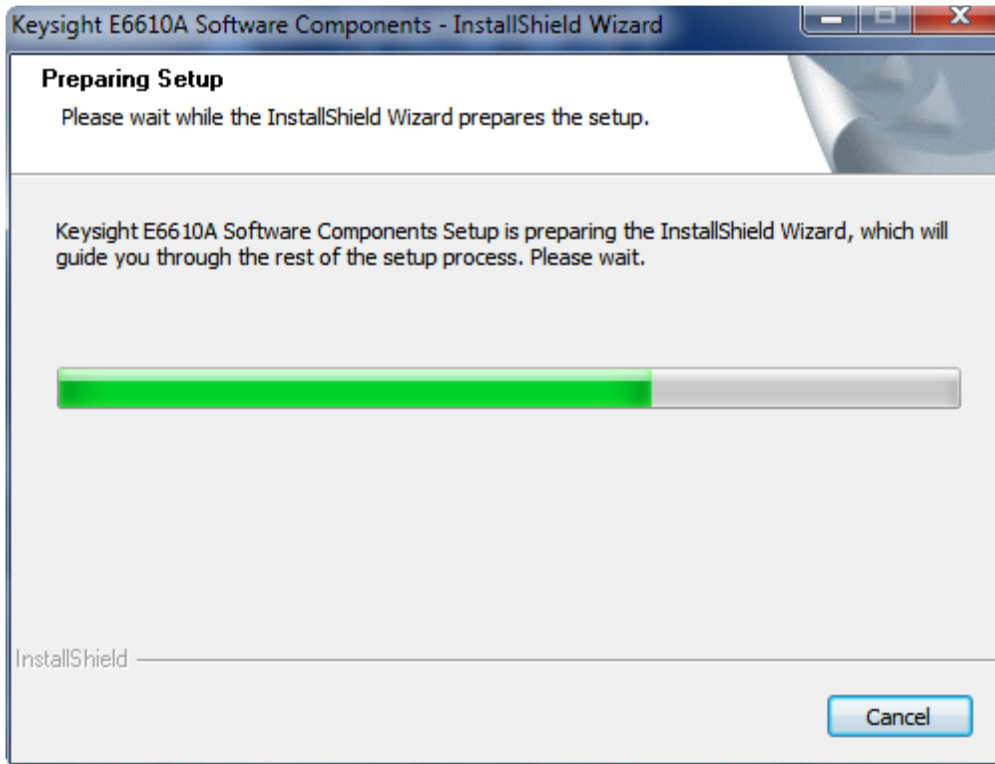
Below the table, there is a "Download" button highlighted in yellow. To the right of the button, it says "Installs on: Instrument".

Other sections on the page include:

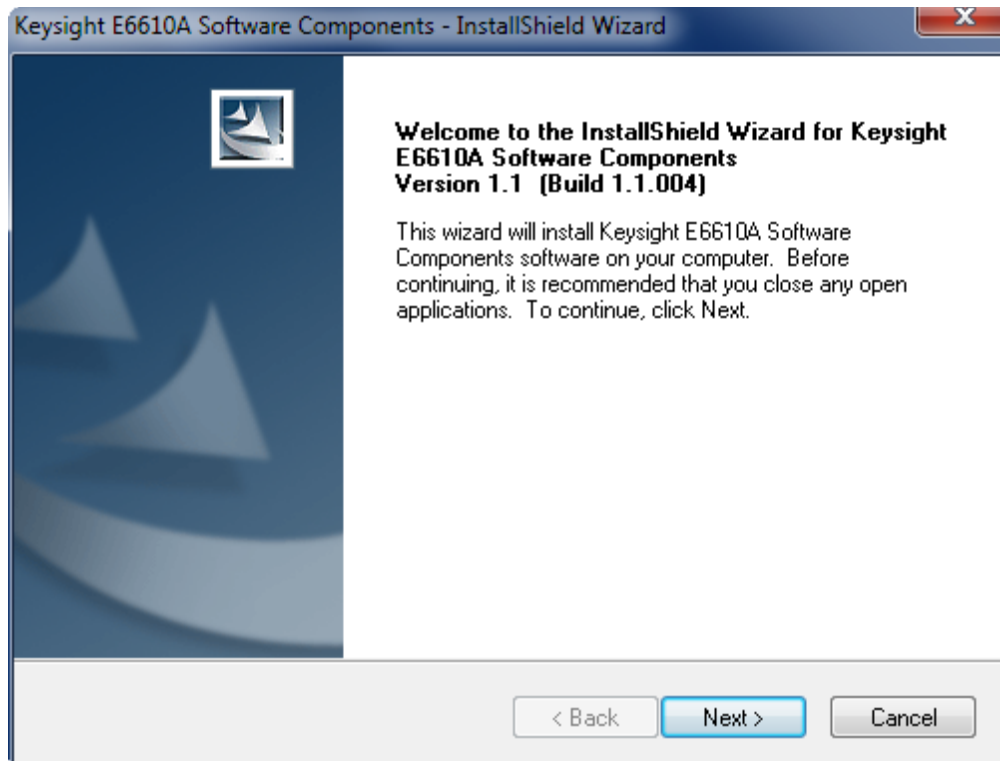
- How to Download**
 - Download the E6610A software package onto your PC
 - Select and run the installation and follow the on-screen prompts.
- How to Install**
 - Information Not Available
- Licensing**
 - Does Not Require a License
- Operating System**
 - Windows 7
- Prerequisites**
 - Information Not Available
- Supported Instruments**
 - E6610A

Install the Software

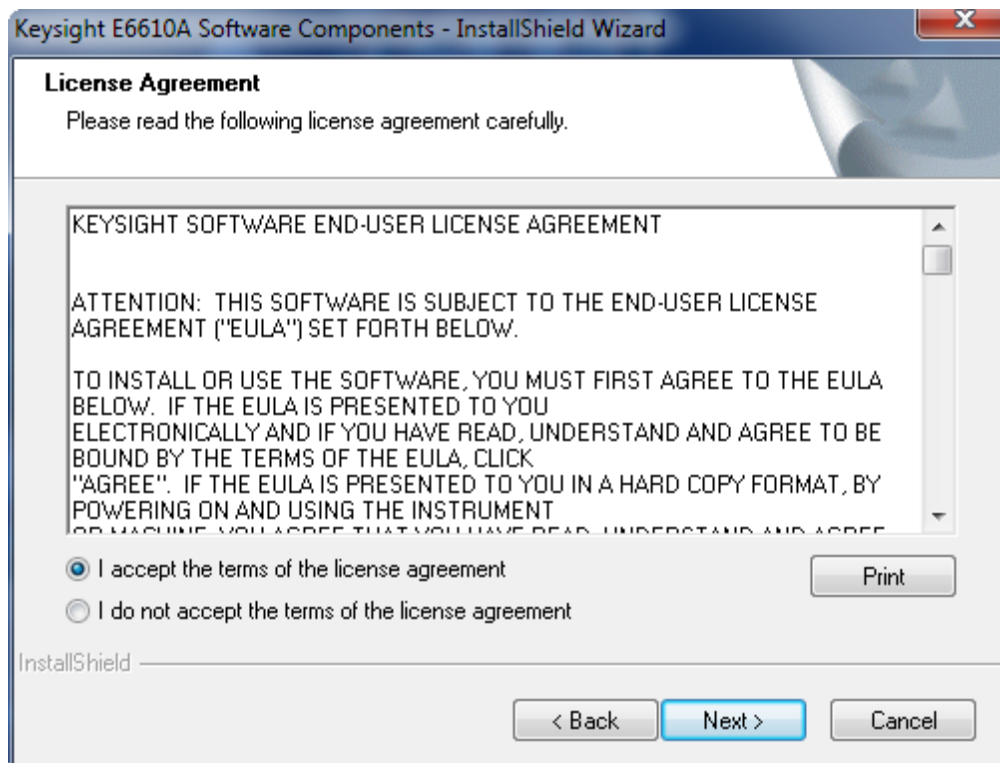
1. Locate the software file that was downloaded to the PC and double-click on the file name to start the install process. You may see a message asking if you want to allow the InstallScript Setup software to make changes to your computer. Click **Yes** to proceed. You will see the InstallShield Wizard start-up window as shown below.



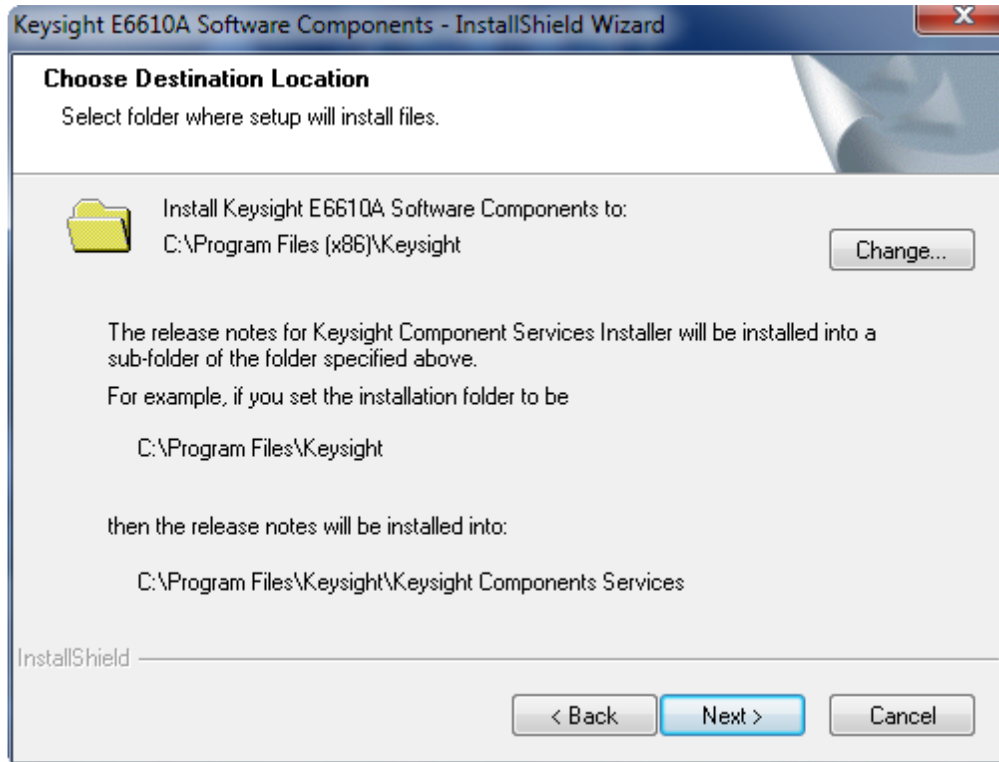
2. When the InstallShield Wizard is ready to start, you will see the window below. Click the **Next** button to start the installation process. Click **Cancel** to exit the installation process.



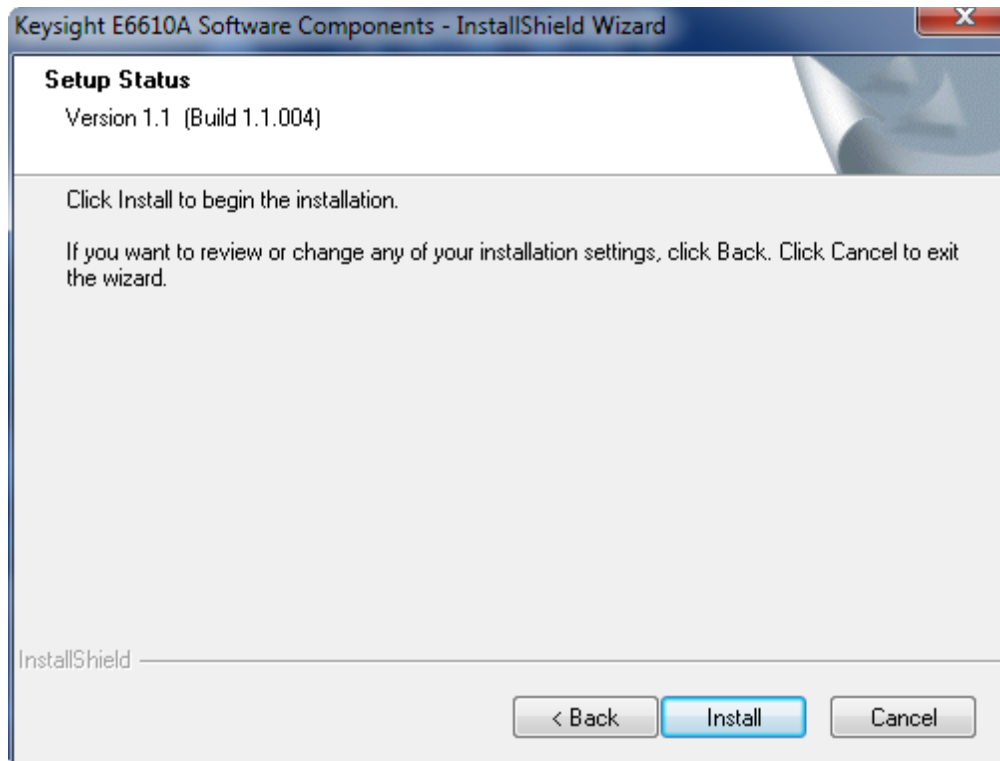
3. Click to select acceptance of the license agreement, and then click **Next >** to continue.



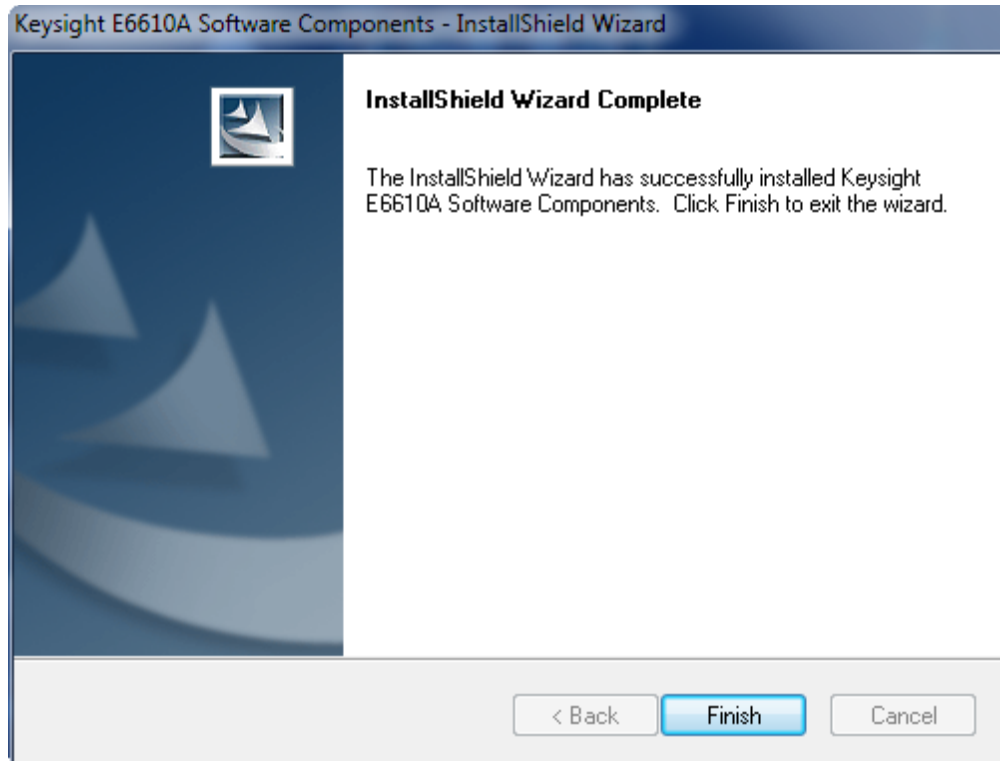
4. The next window allows you to specify the folder where the software files will be installed. Click **Next >** to install to the default folder, or click **Change...** to select an alternative folder.



5. In the Setup Status window, click **Install** if you're satisfied with the settings, or else click **< Back** to make changes.



6. The InstallShield Wizard will install the Keysight E6610A Software Components and the Keysight E6610A Remote Radio Head Tester User Interface. After the software has been installed, the following message will appear. Click **Finish** to complete the installation process.



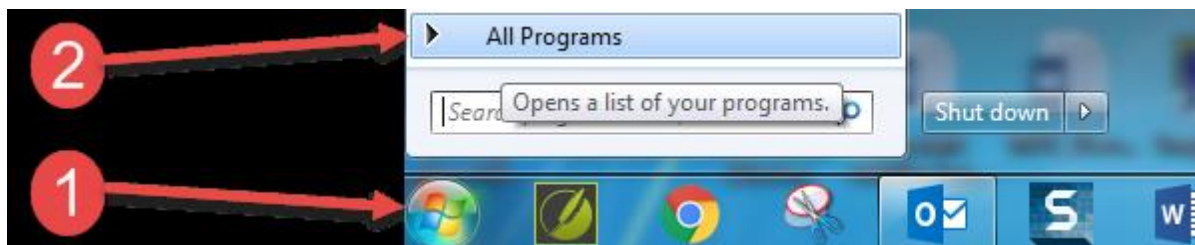
Now that the E6610A GUI software has been installed, it can be configured to make measurements on the E6610A instrument.

Run the GUI Software

Locate the Software on your PC

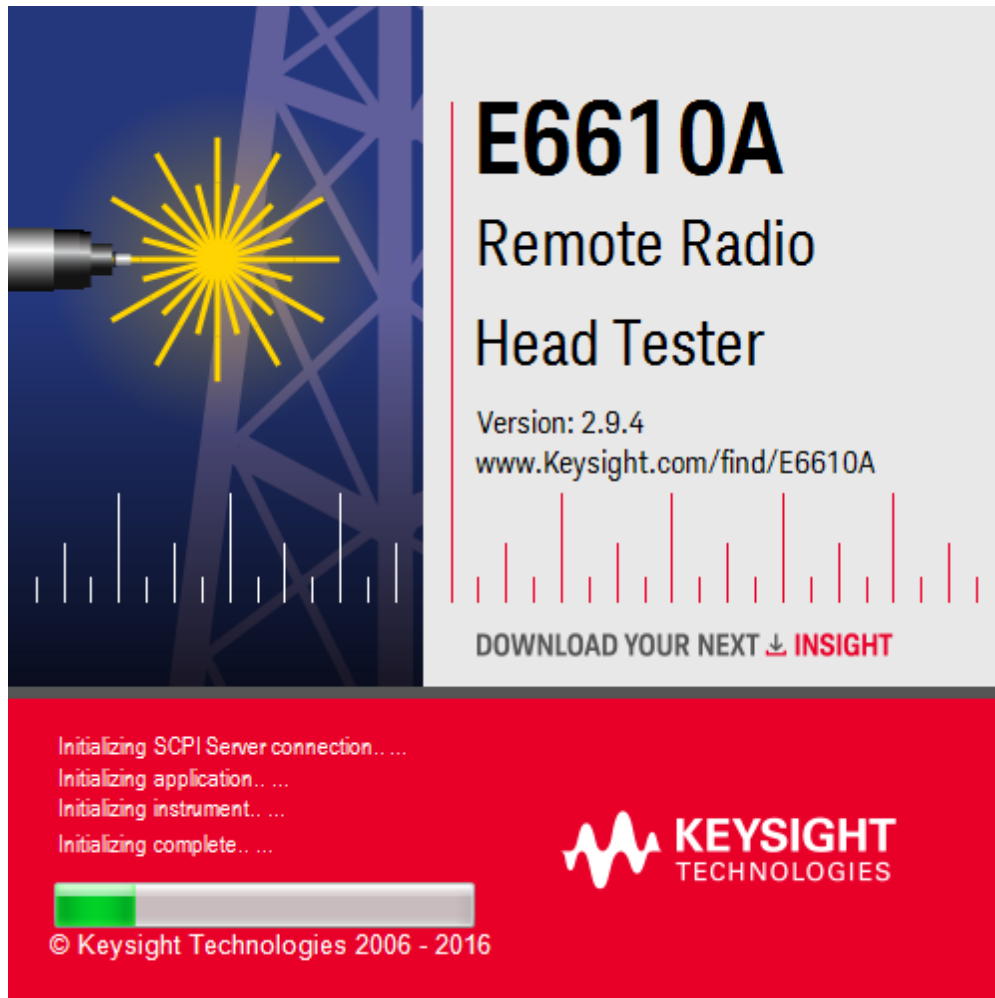
The E6610A GUI Software is placed in a particular folder when first installed on your computer. Follow these instructions to find and run this software.

1. Select the **Start** icon, and then the **All Programs** selection, as seen in 1 and 2 below.

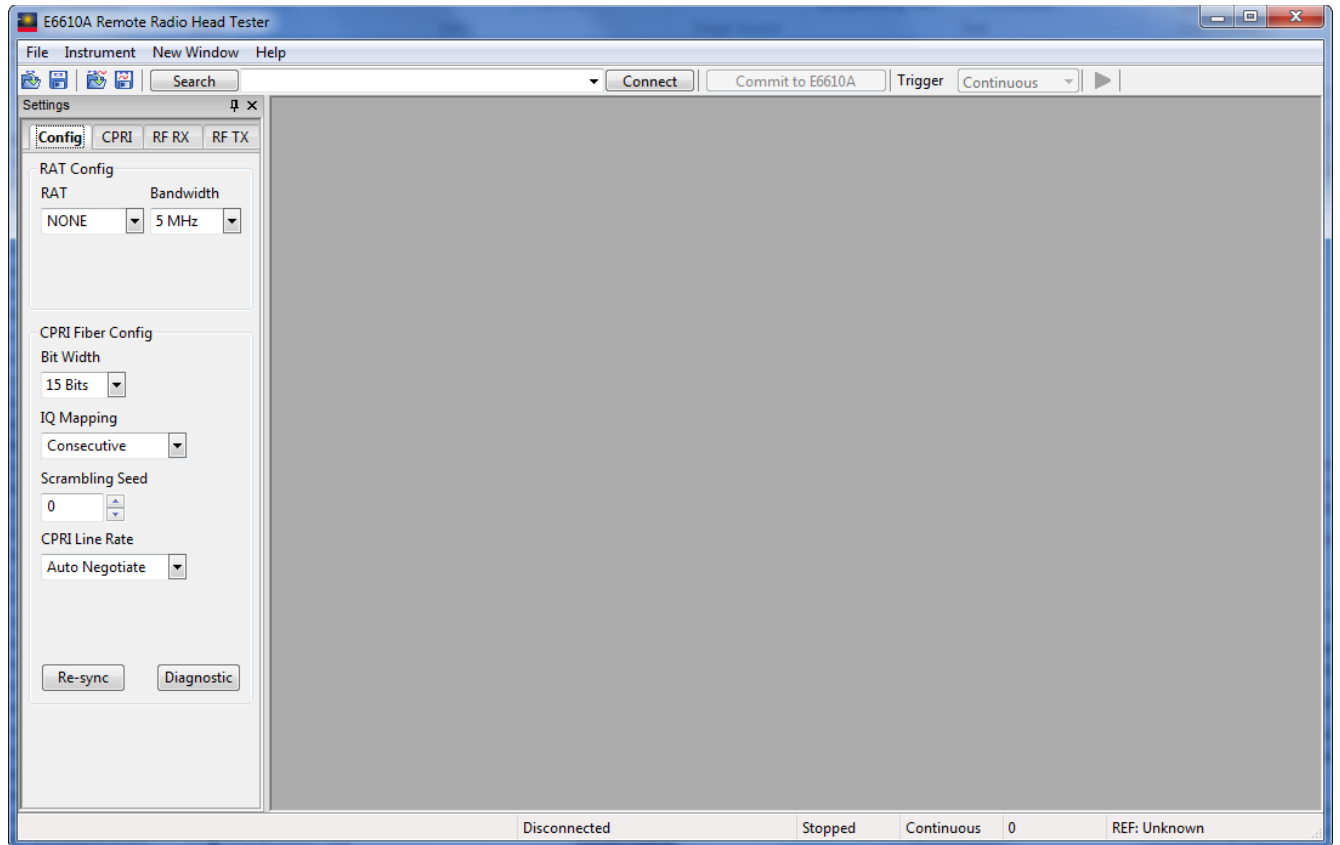


2. Selecting **All Programs** will bring into view a number of programs and folders. Scroll to, and then open the following folder **Keysight > E6610A Remote Radio Head Tester**.

3. Click on the **E6610A User Interface** item. The following splash-screen will appear.



4. After a few seconds, the splash-screen will be replaced by the E6610A GUI as shown below.



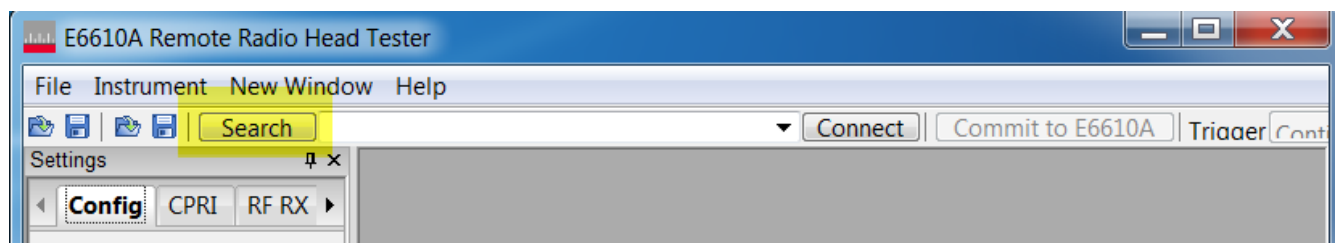
Once the GUI is running, the following steps need to be carried out:

- Discover your E6610A Instrument
- Connect to the instrument

Discover Your E6610A Instrument

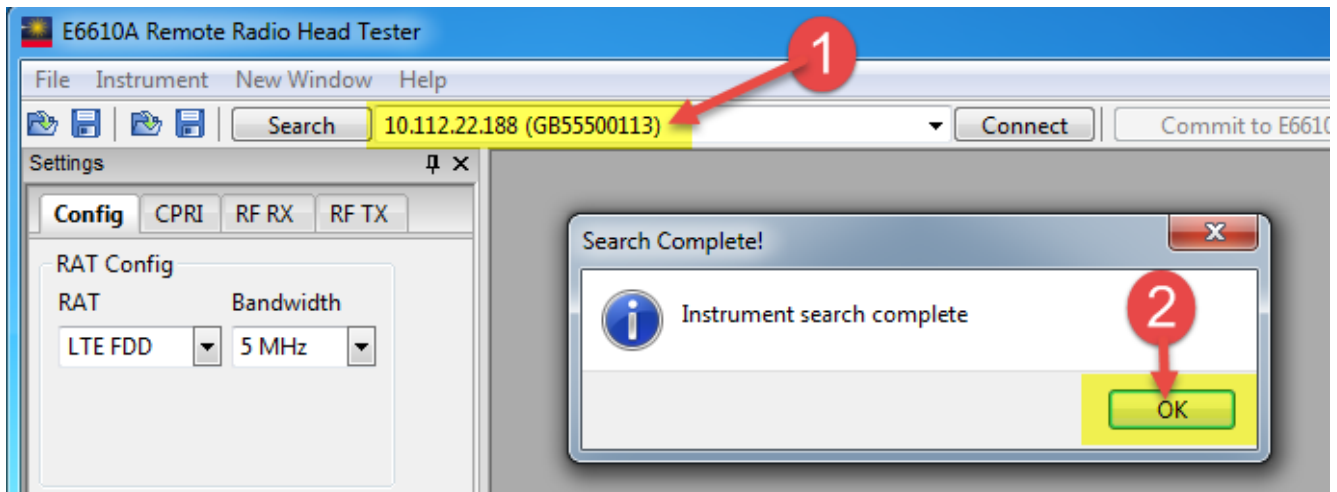
Note: The E6610A software has been designed to search and list all E6610A instruments on the same network subnet.

1. With E6610A GUI software running, click the **Search** button to get the software to scan the network for E6610A instruments. A **Search Complete** message will appear, and the serial numbers of any instruments found will be displayed in the text box next to the search button.

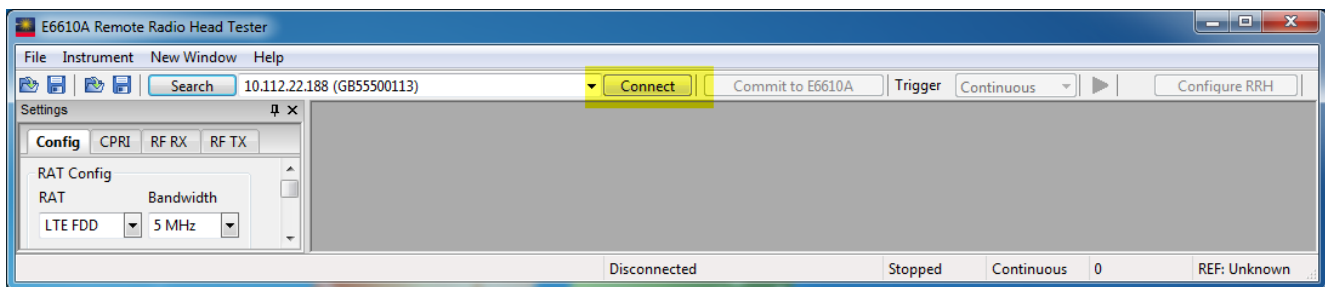


Note: If the E6610A you wish to operate was not discovered, it will be necessary to determine the E6610A IP address and manually enter it. See Manual Selection of the E6610A below.

2. Notice below that an E6610A instrument has been discovered on the network. In this example, the serial number (**GB55500113**) and IP address **10.112.22.188** are shown. Click **OK** to accept the search results. Note that if multiple E6610As are connected to the same network subnet, clicking on the drop-down arrow will display a list of available instruments, and you can click on the desired unit to select it.



3. Click the **Connect** button highlighted below to connect to the instrument.



Manual Selection of the E6610A

If the desired instrument serial number does not appear in the search window, you will need to enter the identifying information for the instrument manually. This can be done in two ways, by (A) serial number, or (B) IP address:

A. **Serial number:** Enter the instrument's serial number, which is located on the instrument rear panel into the **Search box**, and then click the **Connect** button.

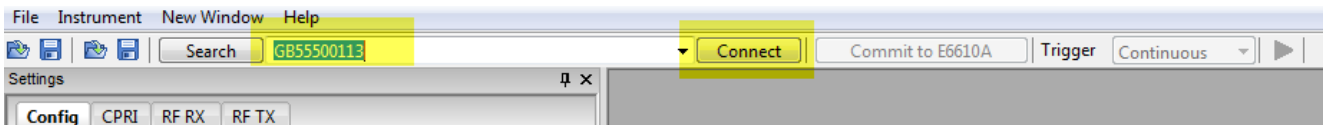
B. **IP address:** Use the PC command line interface to identify the instrument's IP address. The IP address can be entered into the **Search box**, and then the **Connect**

button clicked. The following procedure shows how to find the instrument's IP address using the command line interface.

1. Run **cmd.exe** on the computer to open a Command window. Click **Start** and then enter "**cmd**" in the text box as shown in 1 and 2 below.



2. When the command line interface appears, at the prompt, enter the instrument serial number followed by the domain name, such as "**ping GB55500113.Company_name.com**". Press return.
3. The messages returned from "pinging" the instrument will provide its IP address. for example **10.112.22.188**.
4. In the E6610A GUI, enter the IP address into the text box to the right of the "**Search**" button, and then click the "**Connect**" button. A message will appear to confirm the connection.



5. The E6610A instrument is now connected to the GUI software. Instrument measurements can now be set up.