



Agilent N4010A
Bluetooth® EDR TX/RX
Measurement DLL

Installation Guide



Agilent Technologies

www.agilent.com/find/N4010A/

This Installation Guide

Use this Installation Guide to install the N4010A *Bluetooth* EDR TX/RX Measurement DLL on your PC. Before beginning the installation and connection ensure you have the following items:

- The installation CD-ROM
- Installation PC meeting the minimum requirements - see box cover
- Agilent N4010A with licensed options 101 *Bluetooth*, Option 110 Connectivity, and Option 105 or 106 *Bluetooth* EDR
- Installed I/O libraries. You can download and install the Agilent I/O libraries version 14.1 (or greater) from <http://www.agilent.com/find/iosuite/>.
- USB 2.0, LAN, or GPIB connection from your PC to the N4010A test set

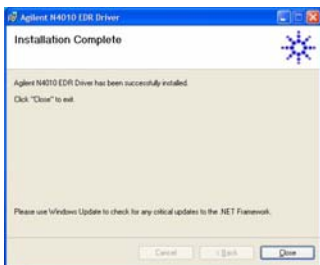
Installing the N4010A EDR TX/RX Measurement DLL on your PC as follows:

1. We recommend no applications are running on the installation PC.
2. Insert the Installation CD-ROM in the PC CD/DVD drive.
Wait until the Install Wizard has completed and the Welcome screen is displayed.
3. Click **Next** on the Welcome screen to continue.

Note: The EDR TX/RX Measurement DLL installation requires that Microsoft .NET Framework version 1.1 is already installed on your PC. The installer checks your PC:

- **.NET Framework not found** - Installer halts and asks you to install the Framework. The Microsoft .NET Framework can be downloaded from: <http://msdn.microsoft.com/netframework> or the N4010A CD-ROM (Microsoft .NET Framework 1.1 directory)


4. When displayed, review the terms of the license agreement, select the appropriate radio button and click **Next** to continue.
5. Click **Next** to accept the default *C:\Program Files\Agilent\N4017A Bluetooth GMA* install path (recommended) or select **Change...** and enter the new path.
6. Click **Next** to begin the installation.
7. Click **Close** when the Install Shield Wizard complete screen is displayed to close the installation.

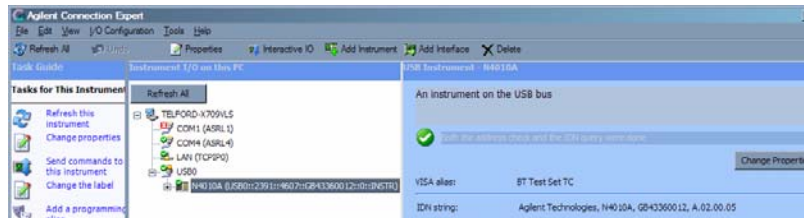


Note: A LAN Crossover cable is required if you intend to use the LAN interface to connect directly to the test set without a LAN bridge/switch in circuit.

Configuring the I/O system

Before starting the *Bluetooth* EDR TX/RX Measurement DLL, configure the I/O system to ensure communication between the PC and N4010A test set.

1. If you are using Agilent IO libraries click the Agilent IO icon  located in your PC tool tray.
2. Select **Agilent Connection Expert** from the popup menu to display the new connection screen.

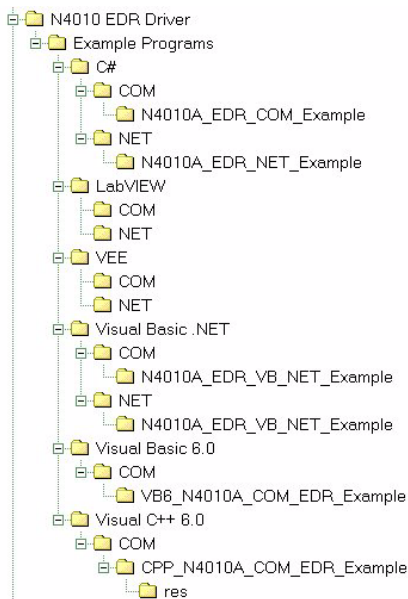


3. Select the interface you have used to connect your PC to the test set and click Add instrument.
4. Complete the details in the entry field and test the connection.
5. Add additional test sets as required.

Using the N4010A Bluetooth® EDR TX/RX Measurement DLL

- Click the Start menu (**Start > Programs > Agilent N4010 EDR Driver > N4010 EDR Driver Help**) to launch the Help file.
- Follow the help steps in the *Creating an EDR Test Program - 6 Basic Steps* using the programming environment of your choice.

The following example programs are available in the recommended program environments. You can also access them from the Start menu (**Start > Programs > Agilent N4010 EDR Driver > Example Programs >**)



If you require further assistance, contact the N4010A/N4017A support team by e-mail at: N4010A_support@agilent.com.

