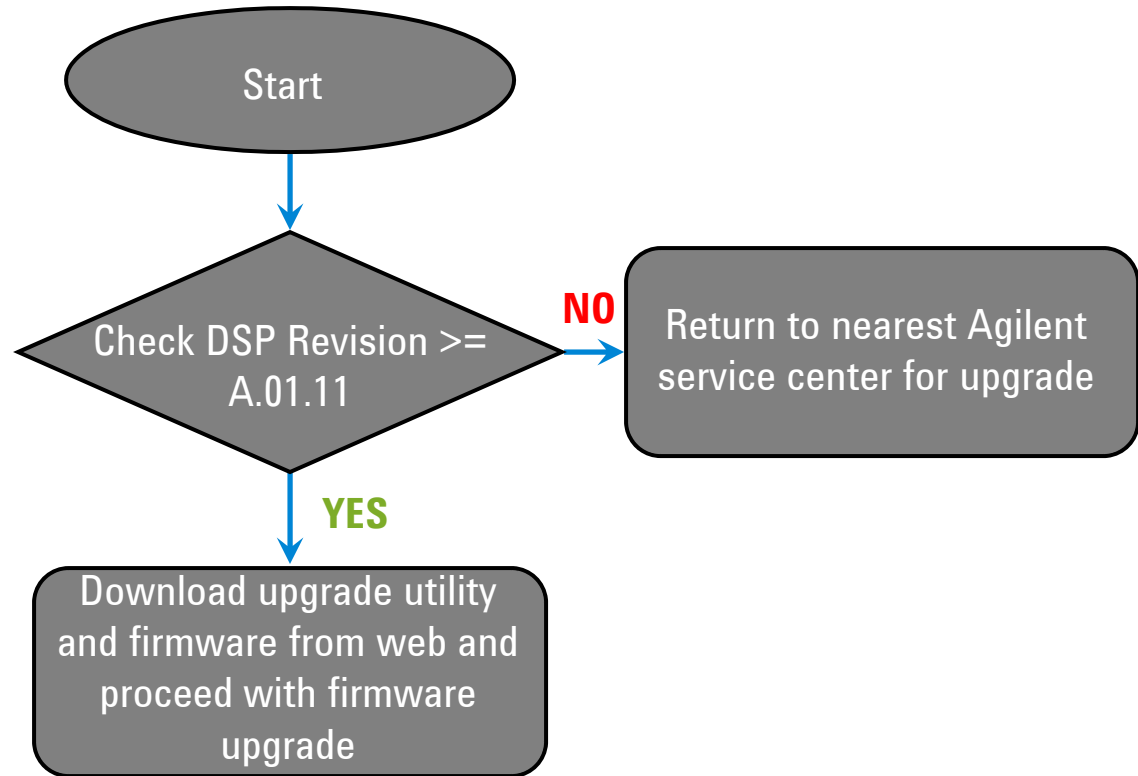


# **EPM Power Meter Firmware Upgrade Process**



**Agilent Technologies**

# Firmware Upgrade Flowchart





## DSP Revision Verification

It is important to verify the DSP revision of the EPM power meter before the firmware upgrade. This is because the old version of measurement board is not capable of supporting the new firmware.

### **The Steps for Verification (through power meter front panel)**

1. Disconnect power sensor from the power meter.
2. Press [System/Input], go to next screen page by pressing {2 of 3}.
3. Go to {Service}.
4. Then press {Version}.
5. Verify the DSP Revision.



# Firmware Upgrade

## Hardware/Software Requirements

- ◆ The current hardware requirements for this procedure are:
  - (a) A PC running Windows 2000® or Windows XP®.
  - (b) A GPIB interface.
- ◆ The current software requirements for this procedure are:
  - (a) A VISA library (e.g. Agilent IO Libraries).
  - (b) The EPM Firmware Files for your instrument.
  - (c) The EPM Firmware Upgrade Utility installer (setupload.exe).

**Note: This procedure has not been tested on other versions of Windows.**

## Step 3 : Firmware Upgrade (Cont')

### Obtaining The Software

- ◆ The latest version of the Agilent IO Libraries can be obtained from the following link:  
[Agilent IO Libraries](#)
- ◆ The EPM Firmware and its Firmware Upgrade Utility can be obtained from the following link:  
[EPM firmware upgrade](#)
- ◆ Save the file to PC hard drive
- ◆ **Note: This is a WinZip® executable file that must be unpacked before use.**

# Firmware Upgrade Process

## Step 1:

Run the 'setupload.exe' and install the Firmware Upgrade Utility.

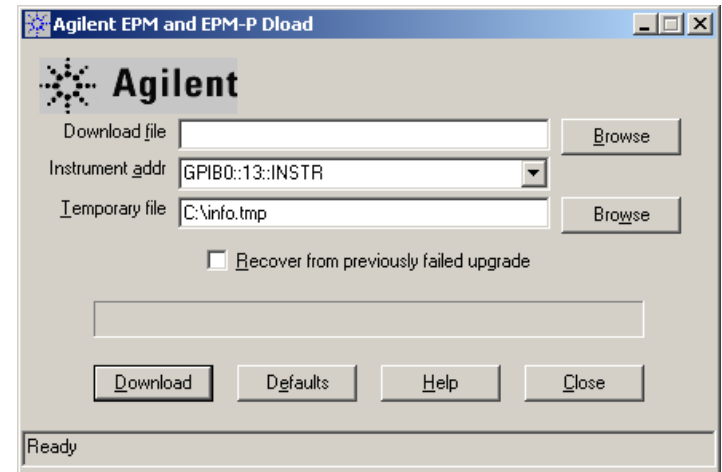
## Step 2:

When the installation completed, execute 'Agilent EPM and EPM-P Dload' by clicking Start -> All Programs -> Agilent EPM and EPM-P Dload

## Step 3:

Select the firmware file by clicking 'Browse' button next to 'Download file'. After that, click on the drop-down arrow next to 'Instrument addr', and select the unit to be upgraded.

**Note: The power meter's GPIB address must be set to 13, and the programming language must be set to SCPI.**



# Firmware Upgrade Process

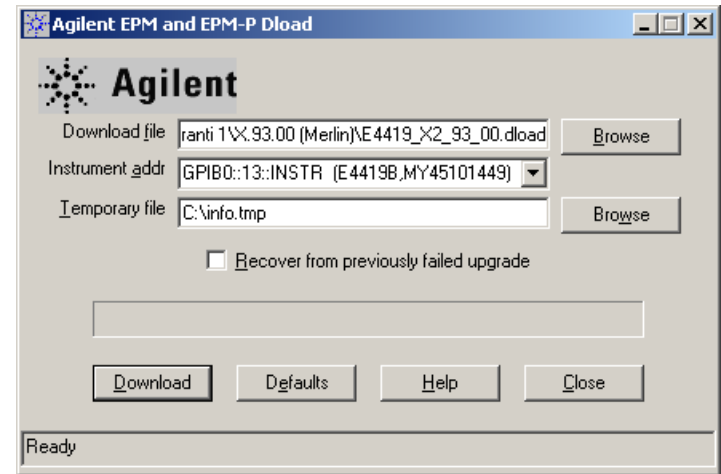
## Step 4:

Click on the 'Download' button.

Click 'OK' on the warning pop-up when asked about instrument's condition.

Firmware download will start.

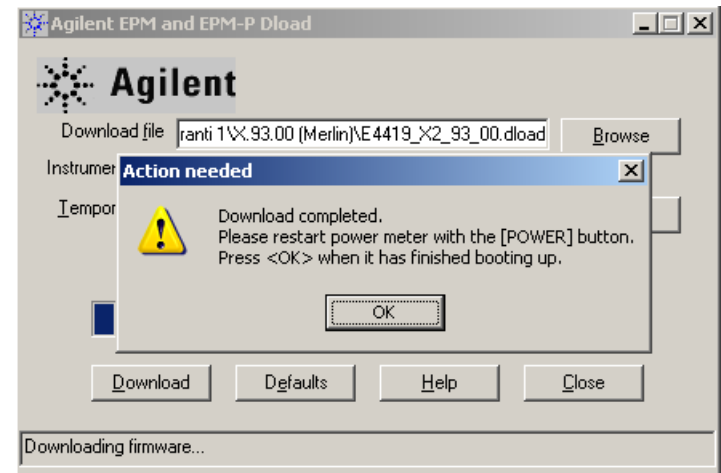
**Note: Do not interrupt the firmware upgrade by disconnecting/power cycle/power off the power meter.**



# Firmware Upgrade Process

## Step 5:

**Restart the power meter by pressing the 'Power' button on the front panel of the power meter. Click 'OK' when the power meter finish booting up.**

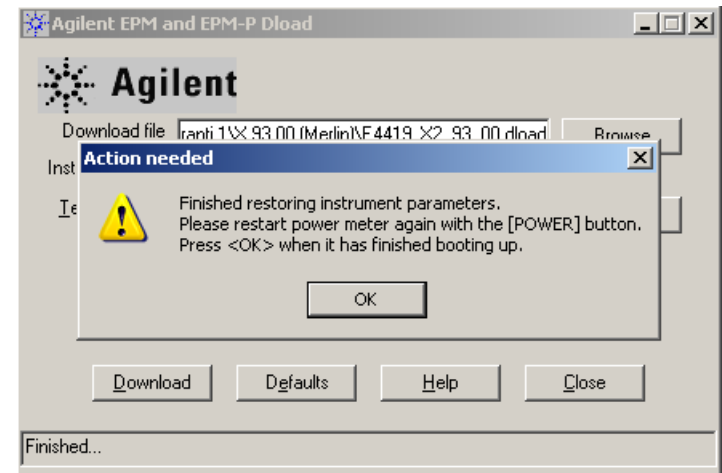




# Firmware Upgrade Process

## Step 6:

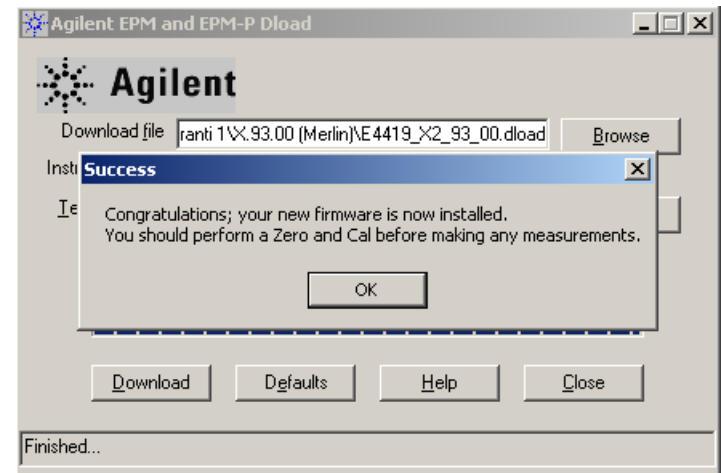
**Restart the power meter again by pressing the 'Power' button on the front panel of the power meter. Click 'OK' when the power meter finish booting up.**



# Firmware Upgrade Process

## Step 7:

**Click 'OK' on the message pop-up. Firmware upgrade is now completed.**



**You have successfully upgrade the new firmware!**