
Printer Driver (HP DeskJet 940C) Installation for Agilent E5070A/E5071A

This manual describes how to install the HP DeskJet 940C printer driver into the E5070A/E5071A. This installation is not required if the driver has already been installed into the E5070A/ E5071A.

Printer Driver for HP DeskJet 940C Installation

The E5070A/E5071A with the following serial numbers is required to install the HP DeskJet 940C printer driver for using the 940C with it. This installation is not required if the driver has already been installed into the E5070A/E5071A.

E5070A serial numbers: JP1KJ00100 through 111

E5071A serial numbers: JP1KJ00100 through 248, 251, 253

Required Equipment

- E5070A or E5071A (with keyboard and mouse).
- HP DeskJet 940C
- Parallel cable (furnished with 940C) if you use the printer using the E5070A/71A's parallel port
- USB cable (furnished with 940C) if you use the printer using the E5070A/71A's USB port
- five floppy disks

How to make Printer Driver Installation Disks

The following is the procedure to make the Printer Driver Installation Disks.

- Step 1.** Label disk with disk number (e.g. disk1, disk2, ... disk5)
- Step 2.** Copy the files from Agilent Technologies web site onto the floppy disks using your computer's FDD, and then rename the files to the following name.
- disk1: driver_940c.exe (30KB), driver_940c.zip (1394KB)
 - disk2 : driver_940c.zip (1424KB)
 - disk3 : driver_940c.zip (1424KB)
 - disk4 : driver_940c.zip (1424KB)
 - disk5 : driver_940c.zip (708KB)

How to install Printer Driver

The following is the procedure to install the printer driver.

- Step 1.** Prepare the Printer Driver installation disks.
- Step 2.** Connect the mouse and the keyboard to the E5070A/E5071A rear panel. Then turn the E5070A/E5071A on.
- Step 3.** Exit from the E5070A/E5071A Measurement Display.
1. Press **System** key.
 2. Press **Service Menu - Restart Menu** on the menu bar, and the Password dialog box will

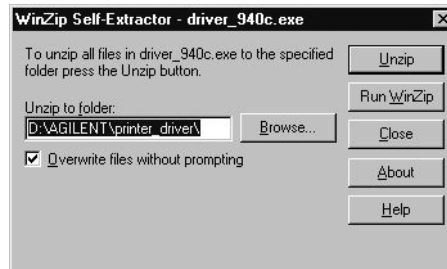
appear.

3. Enter the password **e507xa** into the Password box.
4. Press **Restart as Service** on the menu bar, and the instrument will be restarted.

Step 4. Double-click the “**My Computer**” icon on the Windows desktop.

Step 5. Copy the files of the Printer Driver installation disks onto drive D: of the E5070A/E5071A.

1. Insert the disk labeled “disk1” into the FDD of the E5070A/E5071A.
2. Double-Click the “**3 1/2 Floppy [A:]**” icon, and then double-click the “driver_940c.exe”. The Self-Extractor window appears.



e5070ase323

3. Enter the folder name, and press **Unzip**. The default folder is D:\AGILENT\printer_driver.
4. Follow the message of the Self-Extractor, and insert the second disk labeled “disk2”. Repeat this process until the disk labeled “disk5” is inserted.



e5070ase324

5. Confirm the message that you successfully extract the files, and click **OK**.

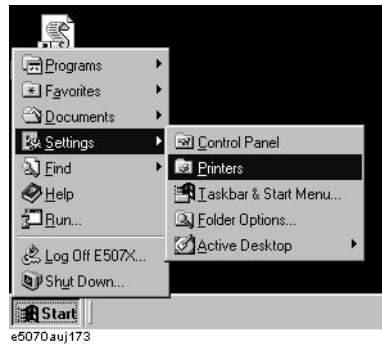


e5070ase325

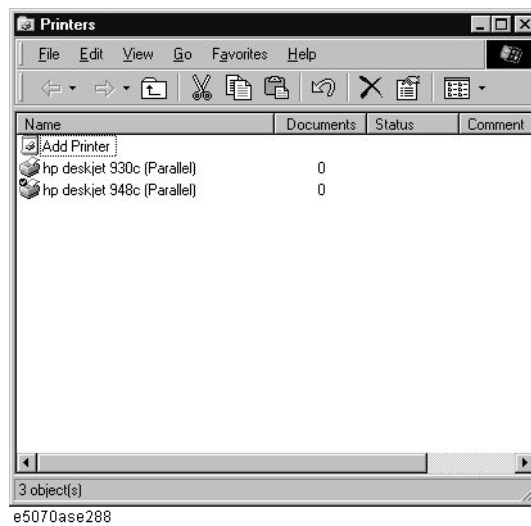
Step 6. Install the 940C printer driver.

1. Move the mouse pointer to the lower left part of the screen of the E5070A/E5071A and

click **Start - Setting - Printers** (see the below figure) to open the Printers window.



2. Double-click the **Add printer** icon in the Printers windows to start Add Printer Wizard.

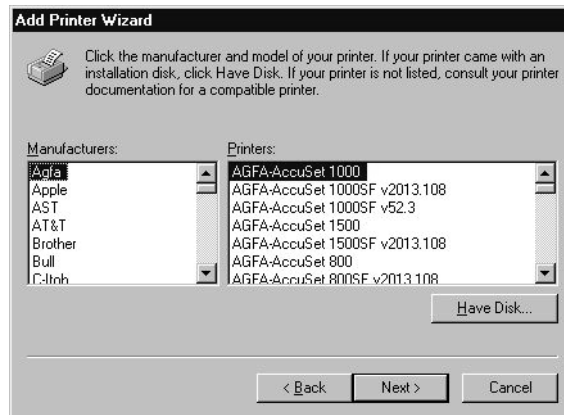


3. On the first screen of Add Printer Wizard, click **Next**. When the screen shows in the below figure, check that “Local printer” is selected and click **Next**.



4. The screen to select the manufacture and model name of the printer appears. Click

Have Disk.



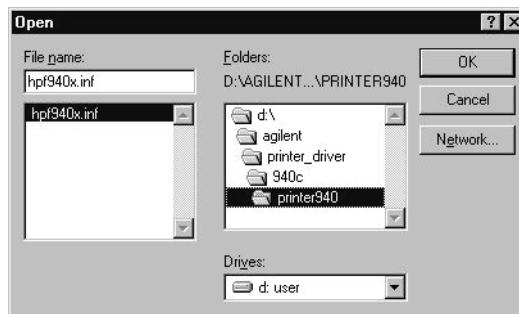
e5070ase310

5. The Install From Disk window appears. Click **Browse**.



e5070ase311

6. The Open window appears. Select **hpf940x.inf** file and click **OK**. The hpf940x.inf file has been placed under **printer940** folder. The printer940 folder has been placed under the folder you have entered in Step 5. The default folder is
D:\AGILENT\printer_driver\940c\printer940.



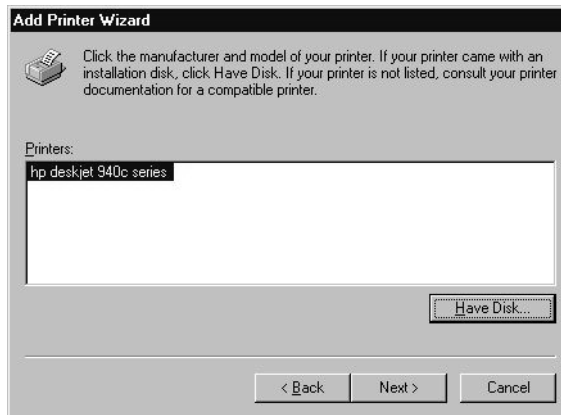
e5070ase312

7. Click **OK** on the Install From Disk window.

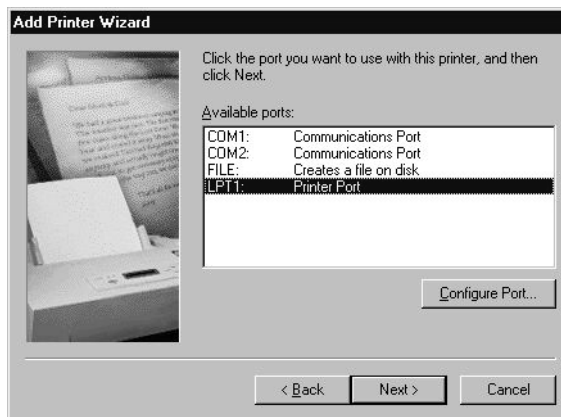


e5070ase313

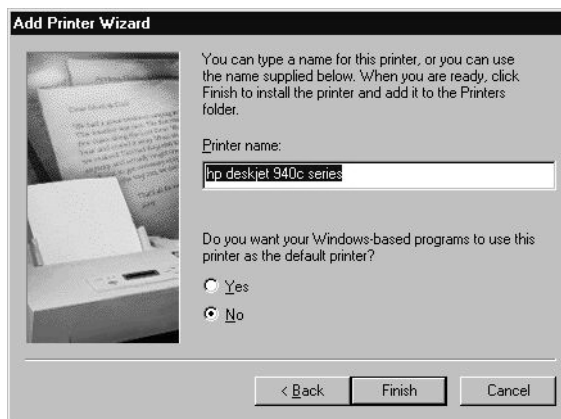
8. Confirm that hp deskjet 940c series is listed, and click **Next**.



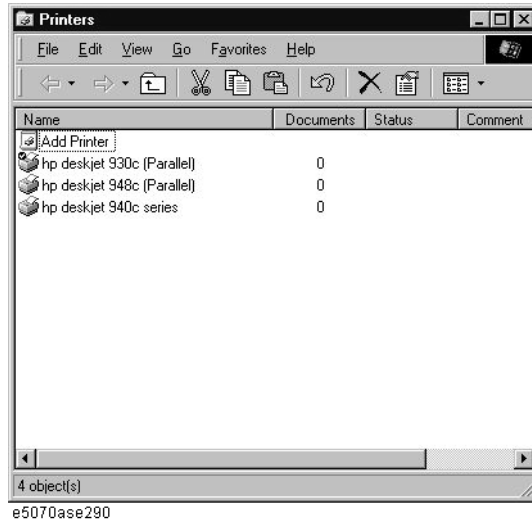
9. The screen to select the connection port appears. Select **LPT1** and click **Next**.



10. The screen to enter the printer name appears. Enter the printer name, select whether to set it to the default printer, and click **Finish**. Use the printer name you have specified here when selecting the printer in the Printer Setup Dialog Box.



11. Confirm that the printer name you have specified is displayed on the Printer windows.



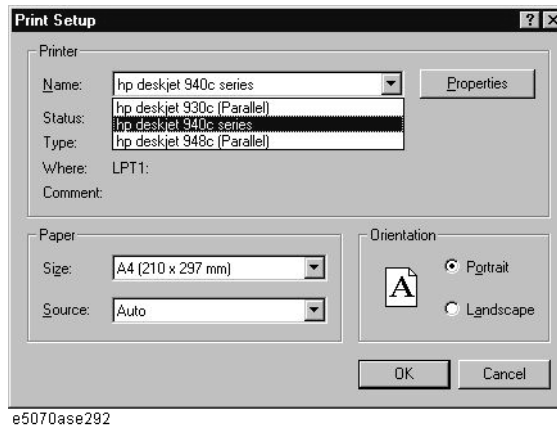
Step 7. Double-click “Restart as instr” icon on the Windows desktop, and the instrument will be restarted and the measurement screen will appear.

Step 8. Select the printer name you have installed the printer driver.

1. Press **System** - **Printer Setup**.
2. The Printer Setup Dialog box appears. Select the printer name and set up the printer, and click **OK**.

Figure 1

Print Setup Dialog Box



Step 9. Confirm that the HP DeskJet 940C works properly.

1. Connect the HP DeskJet 940C printer to the parallel port of E5070A/E5071A using the parallel cable furnished with the printer and turn on the printer.
2. Select the screen image you want to print, and press **System** ^{Capture}. Then press **Print**. For details, refer to the Data Output chapter of the E5070A/E5071A User’s Guide.
3. Confirm that the screen image is printed.

Step 10. Install the HP DeskJet 940C USB driver if you want to use the USB port.

1. Exit from the E5070A/E5071A Measurement Display.
 - a. Press **System** - **Service Menu** - **Restart Menu**, and the Password dialog box will appear.
 - b. Enter the password **e507xa** in the password box and click **OK**.
 - c. Press **Restart as Service**, and the instrument will be restarted.
2. Turn the HP DeskJet 940C printer off, and disconnect the parallel cable from the parallel port of E5070A/E5071A. And then turn the printer on. Connect the printer to USB port of the E5070A/E5071A using the USB cable furnished with the printer while the E5070A/E5071A is on. Add New Hardware Wizard will start automatically. Then Click **Next**.



3. Mark the **Search for the best driver for your device** ,and click **Next**.



4. Mark the **Specify a location**, and click **Browse**.



e5070ase297

5. Select **Usb940** folder, and click **OK**. The Usb940 folder has been placed under the folder you have entered in Step 5. The default folder is `D:\AGILENT\printer_driver\940c\Usb940`.



e5070ase296

6. Confirm the folder you have selected, and click **Next**.



e5070ase297

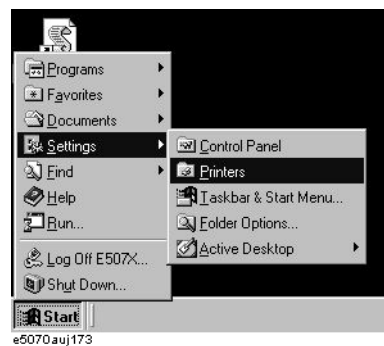
7. Confirm the Windows is now ready to install the driver, and click **Next**.



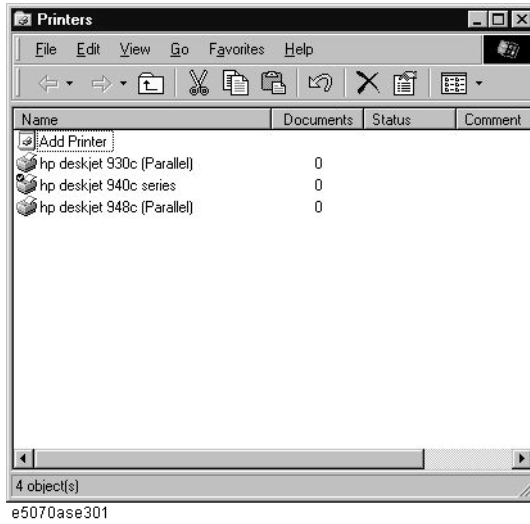
8. Confirm that the driver has been installed, and click **Finish**.



9. New Hardware Found dialog box is displayed for a moment, and the driver is automatically installed.
10. Move the mouse pointer to the lower left part of the screen of the E5070A/E5071A and click **Start - Setting - Printers** (see the below figure) to open the Printers window.



11. Double-click the **Add printer** icon in the Printers windows to start Add Printer Wizard.

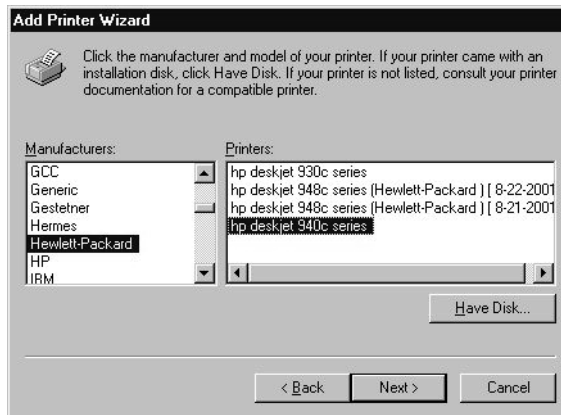


12. On the first screen of Add Printer Wizard, click **Next**. When the screen shows in the below figure, check that “Local printer” is selected and click **Next**.



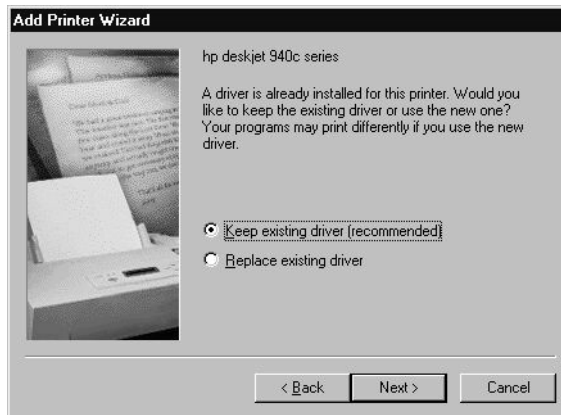
13. The screen to select the manufacture and model name of the printer appears. Select the manufacturer **Hewlett-Packard** and the printer name **hp deskjet 940c series**, and then

click **Next**.



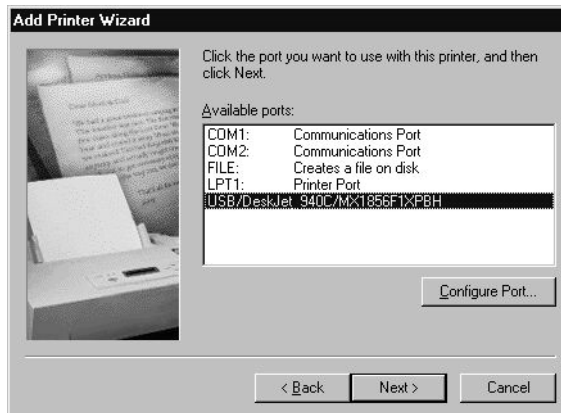
e5070ase302

14. If the screen that asks you whether you want to keep the existing printer driver, select “Keep existing driver[recommended]” as shown below and click **Next**.



e5070ase303

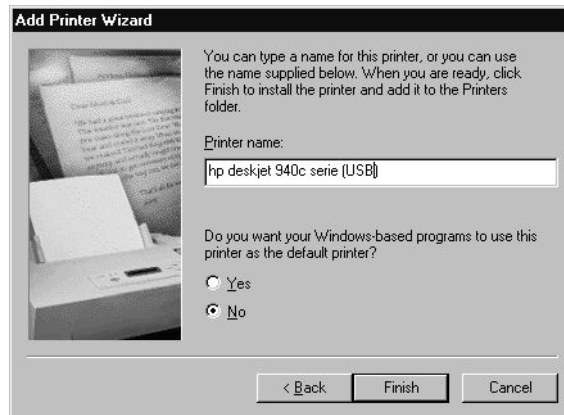
15. The screen to select the connection port appears. Select USB port and click **Next**.



e5070ase319

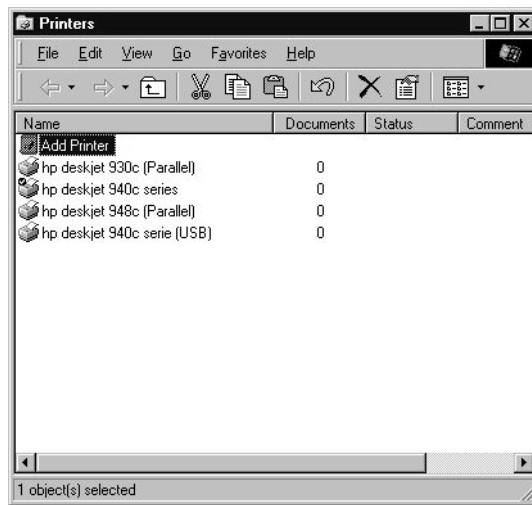
16. The screen to enter the printer name appears. Enter the printer name, select whether to

set it to the default printer, and click **Finish**.



e5070ase305

17. Confirm that the printer name you have entered is displayed.



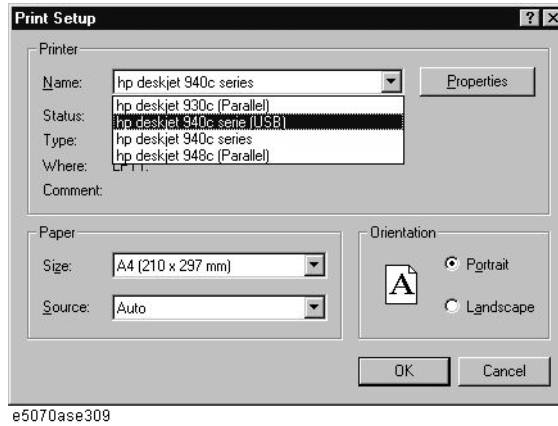
e5070ase306

Step 11. Double-click “**Restart as instr**” icon on the Windows desktop, and the instrument will be restarted and the measurement screen will appear.

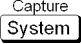
Step 12. Select the printer name you have installed the printer driver.

1. Press **System** - **Printer Setup**.
2. The Printer Setup Dialog box appears. Select the printer name and set up the printer, and press **OK**.

Figure 2 **Print Setup Dialog Box**



Step 13. Confirm that the HP DeskJet 940C connected to the USB port works properly.

1. Select the screen image you want to print, and press . Then press **Print**. For details, refer to the Data Output chapter of the E5070A/E5071A User's Guide.
2. Confirm that the screen image is printed.