

## Installation Instruction

# Keysight M9601A PXIe Precision Source/Measure Unit

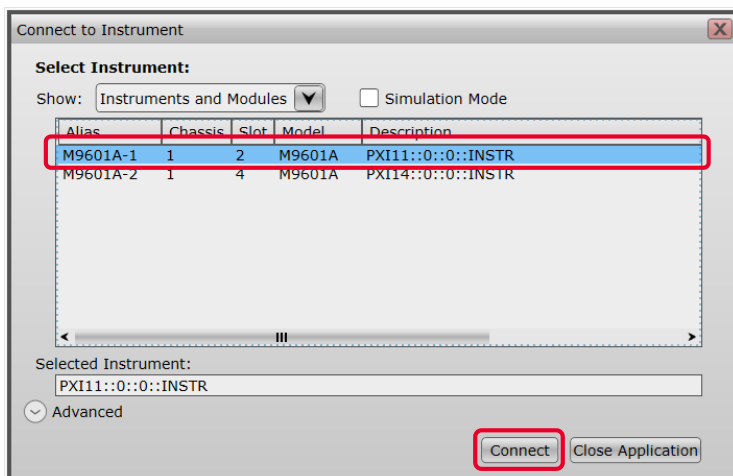
This document describes how to update M9601A software and firmware. Perform both the software and the firmware update.

### M9601A Software Update Procedure

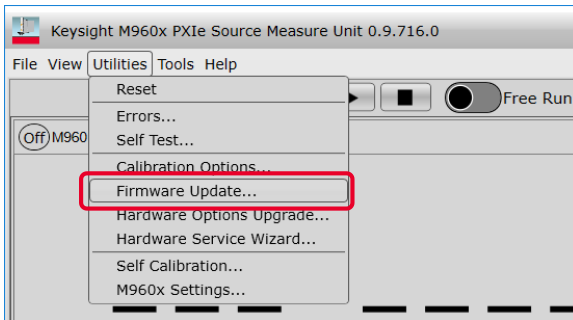
1. Unzip the downloaded software and firmware, if the downloaded file is zipped. (.zip file)
2. Copy the M9601A software installer (.exe file) into the controller.
3. Launch it and follow the instruction prompts to install the software.

### M9601A Firmware Update Procedure

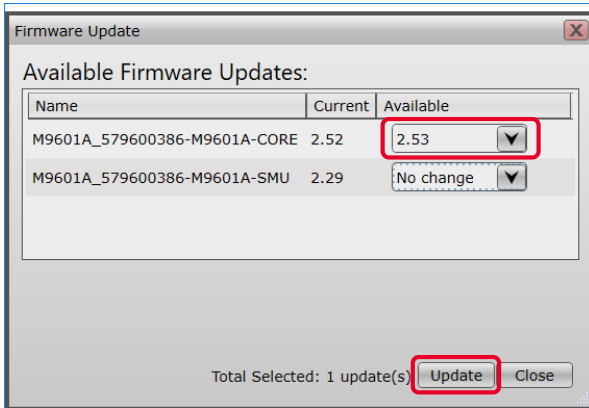
1. Start M960x Soft Front Panel  
e.g. via Start menu > Keysight M960x Source Measure Unit > M960x SFP (x64)
2. Select the module and press “Connect”



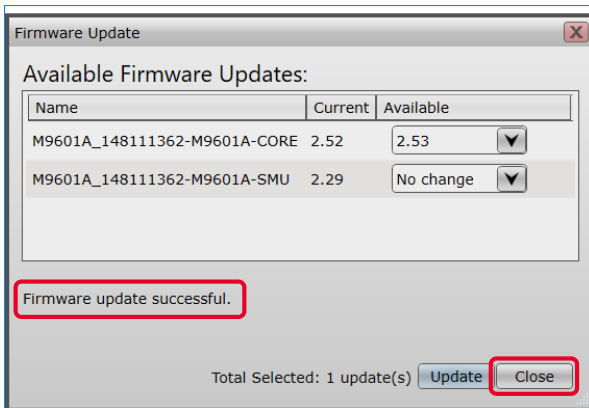
- Open Firmware Update dialog  
e.g. via Utilities menu > Firmware Update...



- Select the latest version, and then press “Update”

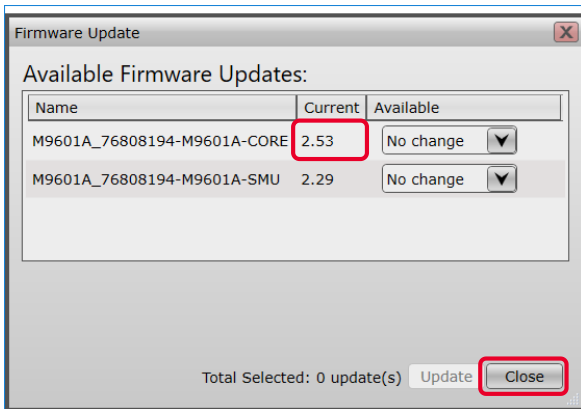


- Confirm that the firmware is updated successfully and close the dialog



- Close M960x Soft Front Panel and power cycle the chassis to make the update effective

7. Start M960x Soft Front Panel again  
e.g. via Start menu > Keysight M960x Source Measure Unit > M960x SFP (x64)
8. Select the module and press “Connect”
9. Open Firmware Update dialog  
e.g. via Utilities menu > Firmware Update...
10. Confirm that the firmware is updated as expected and then press “Close”



End of procedure.