



## **Agilent U7238C/U7238D MIPI D-PHY Conformance Test Application Software Release Notes**

---

**Agilent U7238C/U7238D Software Version 03.00**

**Released Date: 30 May 2014**

**Minimum Infiniium Oscilloscope Baseline Version: 4.60 (9000 series &  
90000 series)**

**File Name: SetupInfMIPI\_D-PHY03000000.exe**

Modifications:

- Supports for Infiniium Oscilloscope Software version 5.00.



**Agilent U7238B Software Version 02.44**

**Released Date: 19 May 2014**

**Minimum Infiniium Oscilloscope Baseline Version: 3.21 (9000 series & 90000 series)**

**File Name: SetupInfMIPI\_D-PHY02440000.exe**

Additions:

- Added HS Clock Instantaneous (UInst)(Min) test.
- Added ULPS Clock Mode test.
- Added Informative test group.
- Added Clock Lane HS Clock Delta UI (UI variation) test.
- Added LP\_TX Pulse Width of Exclusive-OR Clock [Initial] and LP\_TX Pulse Width of Exclusive-OR Clock [Last] tests.

Modifications:

- Improved test measurement for LP slew rate test by added 400Mhz low pass filter.
- Improved test measurement for LP Escape Rise Time test by added 400Mhz low pass filter.
- Fixed connection diagram issue.
- Updated the "THSPREPARE+ZERO" portion in identifying the start of SYNC pattern to handle glitch in the test signal.

Known issues:

- In loading projects created in MIPI version 02.44, users cannot append the existing results.

Miscellaneous Notes:

- This will be the last version to support Infiniium Oscilloscope Baseline Version 4.20.



**Agilent U7238A Software Version 02.43**

**Released Date: 15 May 2013**

**Minimum Infiniium Oscilloscope Baseline Version: 3.21 (9000 series & 90000 series)**

**File Name: SetupInfMIPI\_D-PHY02430000.exe**

Additions:

- Added Switch Matrix feature support.

Modifications:

- Fixed the issue of Vcmtx tests where the worst case value reported is incorrect.

Miscellaneous Notes:

- N/A



**Agilent U7238A Software Version 02.42**

**Released Date: 15 October 2012**

**Minimum Infiniium Oscilloscope Baseline Version: 3.21 (9000 series & 90000 series)**

**File Name: SetupInfMIPI\_D-PHY02420000.exe**

Additions:

- Added new “Continuous Data” test mode.
- Added new “Window” triggering option under the Configure tab. This option is now set as the default triggering option instead of the previous “Pattern/State with InfiniiScan” triggering option.  
Related configuration variables:
  - a. WindowTriggerHighThreshold
  - b. WindowTriggerLowThreshold
  - c. TriggerMethod
- Added the CTS Test ID info to all the corresponding tests in the application.
- Added a debug configuration option that can set the threshold used in determining the THS-Prepare start location. This is used in a non-compliance testing mode to enable testing of data signals that are not terminated properly.  
Related configuration variables:
  - a. THSprepareStartThreshold
- Added configurable options to set the trigger timeout in the Configure tab of the application.  
Related configuration variables:
  - a. TriggerCheck
  - b. TriggerTimeout

Modifications:

- Updated the GUI layout on Setup tab.
- The “InfiniiSim” button on the Setup tab has been removed. This same feature is now accessible via the “Tools” window menu of the application.
- Support User Defined Limit (UDL) feature.
- Fixed the issue of TSkew test where the worst case value reported is incorrect.
- Fixed the issue of incorrect VOD tests measurements when the “Scope Sampling Rate” option is set to “20G Sa/s” and the “Signal Scaling Mode” option is set to “AUTO”.
- Fixed the issue of tCLK-POST test where sometimes the test will report incorrect values in terms of “fs” range.
- Removed the need for InfiniiScan license option in order to run the application.



**Agilent Technologies**

Miscellaneous Notes:

- N/A



## Agilent Technologies

**Agilent U7238A Software Version 02.41**

**Released Date: 15 January 2012**

**Minimum Infiniium Oscilloscope Baseline Version: 3.21 (9000 series & 90000 series)**

**File Name: SetupInfMIPI\_D-PHY02410000.exe**

Additions:

- N/A

Modifications:

- Optimize software to work with baseline 3.21 and above.
- Improve support for Win7 OS.

Miscellaneous Notes:

- N/A



## Agilent Technologies

**Agilent U7238A Software Version 02.40**

**Released Date: 31 August 2011**

**Minimum Infiniium Oscilloscope Baseline Version: 3.11 (9000 series & 90000 series)**

**File Name: SetupInfMIPI\_D-PHY02400000.exe**

Additions:

- N/A

Modifications:

- Optimize software to work with baseline 3.10.0005 and above.
- Added support for Win7 OS.

Miscellaneous Notes:

- N/A



## Agilent Technologies

**Agilent U7238A Software Version 02.30**

**Released Date: 19 April 2011**

**Minimum Infiniium Oscilloscope Baseline Version: 3.00 (9000 series & 90000 series)**

**File Name: SetupInfMIPI\_D-PHY02300000.exe**

Additions:

- N/A

Modifications:

- Improve HS Clock VOHHS test measurement.
- Improve test result reporting for UInst test and Data 1st edge to clock alignment test.

Miscellaneous Notes:

- N/A





## Agilent Technologies

**Agilent U7238A Software Version 02.20**

**Released Date: 3 Jan 2011**

**Minimum Infiniium Oscilloscope Baseline Version: 3.00 (9000 series & 90000 series)**

**File Name: SetupInfMIPI\_D-PHY02200000.exe**

Additions:

- N/A

Modifications:

- Improve Data 1st edge to clock alignment test behavior.
- Improve Vod, dVod & VOHHS tests. These tests will now show error message when the test patterns are not found.

Miscellaneous Notes:

- N/A



## Agilent Technologies

**Agilent U7238A Software Version 02.10**

**Released Date: 30 Sept 2010**

**Minimum Infiniium Oscilloscope Baseline Version: 3.00 (9000 series & 90000 series)**

**File Name: SetupInfMIPI\_D-PHY02100000.exe**

### Additions:

- Added TCLK-POST test.
- Added support for DSOX90000 series.

### Modifications:

- Updated test methodology as per MIPI CTS 1.00. (VOHHS, VOD and LP Slew Rate)

### Miscellaneous Notes:

- N/A



**Agilent U7238A Software Version 02.00**

**Released Date: 15 Mar 2010**

**Minimum Infiniium Oscilloscope Baseline Version: 05.71.00 (80000 series),  
2.10 (9000 series & 90000 series)**

**File Name: SetupInfMIPI\_D-PHY02000000.exe**

Additions:

- Added support for long DSI stream.
- Added filtering to handle continuous clock signals.
- Added InfiniiSim support. (Only for 9000 & 90000 series oscilloscope.)

Modifications:

- N/A

Miscellaneous Notes:

- Added a trouble shooting guide in the CHM help file to assist users.
- This will be the last version to support the 80000 series oscilloscope.  
Following releases will only support 9000 & 90000 series oscilloscope.

**Agilent U7238A Software Version 01.20**

**Released Date: 30 Oct 2009**

**Minimum Infiniium Oscilloscope Baseline Version: 05.71.00 (80000 series),  
2.01 (9000 series & 90000 series)**

**File Name: SetupInfMIPI\_D-PHY01200000.exe**

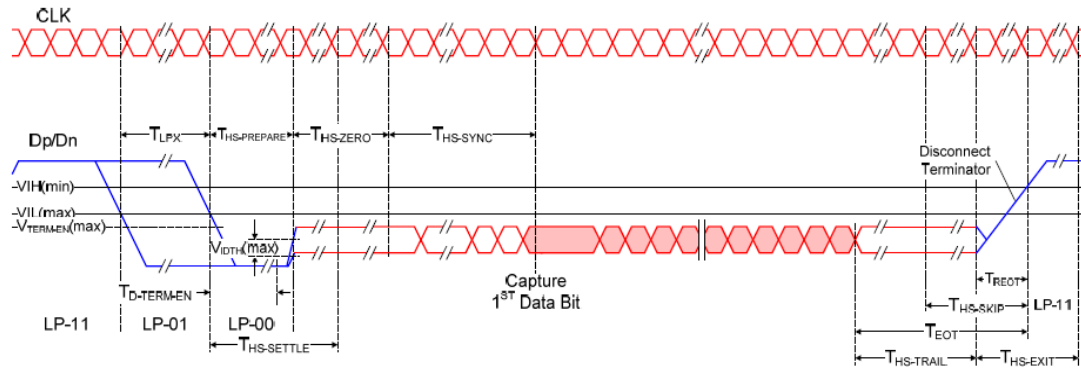
Additions:

- Added the LP Clock TX Electrical tests.
- Added support for using auto load switch board as fixture.

Modifications:

- Filter for common mode variances tests changed to 8<sup>th</sup> order butterworth IIR filter.

Miscellaneous Notes:



**Diagram 1: A Single Analysis Window**

1. Data Processing Requirements:

- At least **2** Analysis Window above should be present for the software to process.
  - The total time length of the 2 Analysis Window should be lesser than the theoretical 200 microseconds (10GSa/s@2Mpts).
- The HS Burst in the Analysis Window should contain valid SYNC sequence
- The HS Burst Payload bits should be random and ideally should not have long 1's and 0's

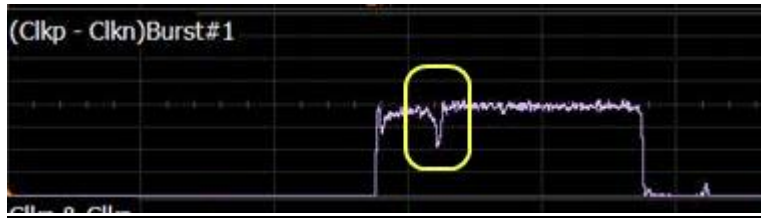


Diagram 2: Spike noise

2. All noise effects (for example diagram 2) in Timing Test Group are treated as part of the waveform acquisition data for measurement processing.



**Agilent U7238A Software Version 01.10**

**Released Date: 13 April 2009**

**Minimum Infiniium Oscilloscope Baseline Version: 05.60.00 (80000 series),  
1.40 (90000 series)**

**File Name: SetupInfMIPI\_D-PHY01100000.exe**

Additions:

- Added the HS Clock TX Electrical tests.
- Added the Global Operation tests.
- Added the HS Data-Clock Timing tests.
- Added support for four probes.
- Added capability to export waveform data, generated from the signal of the Device Under Test.
- Added support for Device Under Test that does not send LP escape mode repetitively.

Modifications:

- Renamed the HS TX Electrical tests to HS Data TX Electrical tests.
- Addressed the issue of HS TX Electrical tests running slow.
- Addressed the issue of unable to find the HS burst in some Device Under Test variances.

Known issues:

- In loading projects created in MIPI version 01.00, users cannot append the existing results.

---

**Agilent U7238A Software Version 01.00**

**Released Date: 1 August 2008**

**Minimum Infiniium Oscilloscope Baseline Version: 05.50.00 (80000 series),  
1.20 (90000 series)**

**File Name: SetupInfMIPI\_D-PHY01000000.exe**

Initial release.

---