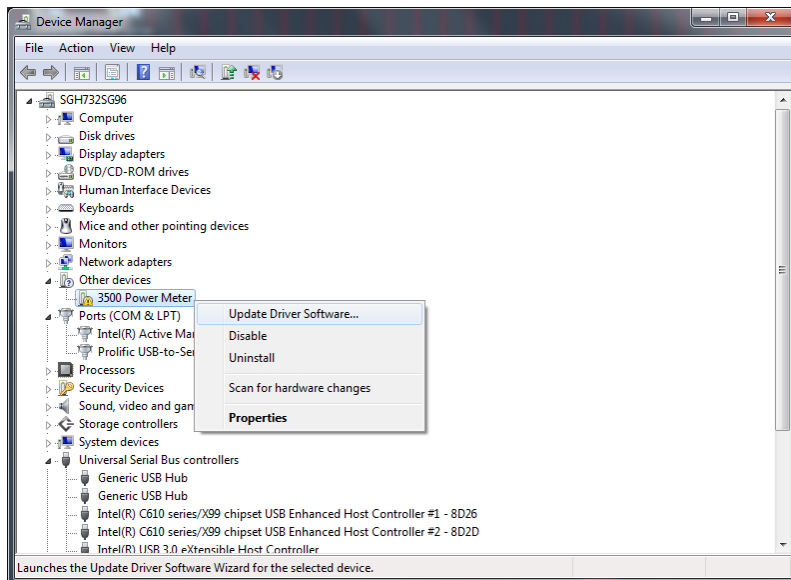


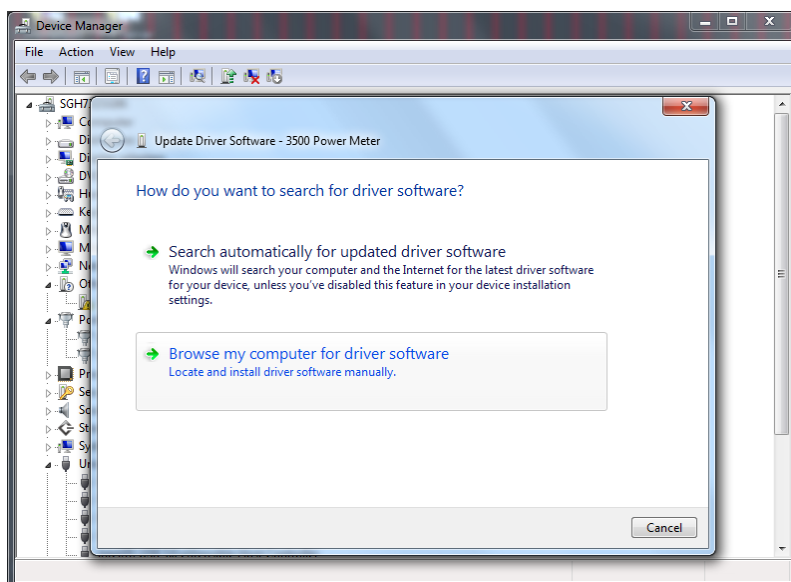
## Keysight V3500A Power Meter Driver Installation Procedure

Note: The Keysight V3500A Power Meter must be connected to the PC via USB before the driver can be seen under **Other devices** tab in the Device Manager window.

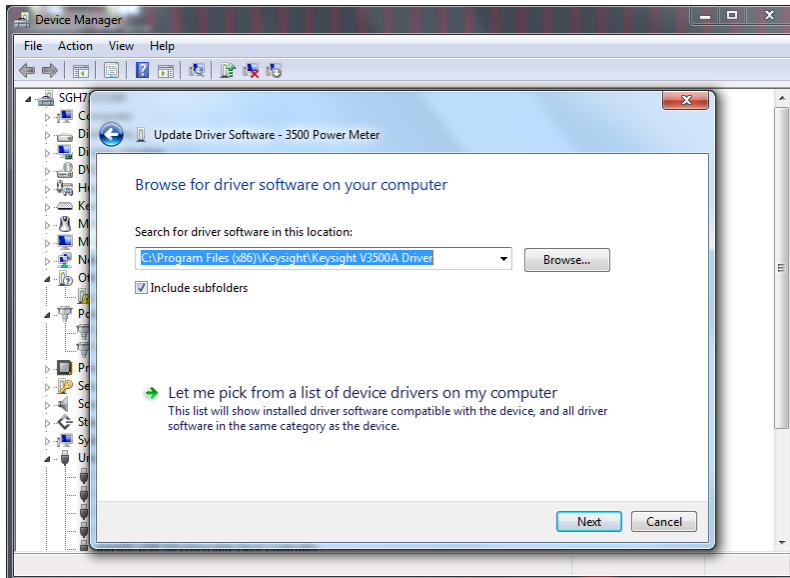
1. To install the driver for the connected instrument, go to **Device Manager**.
2. Under **Other devices** tab, right click '**3500 Power Meter**' and click "**Update Driver Software...**". The **Update Driver Software** window will appear.



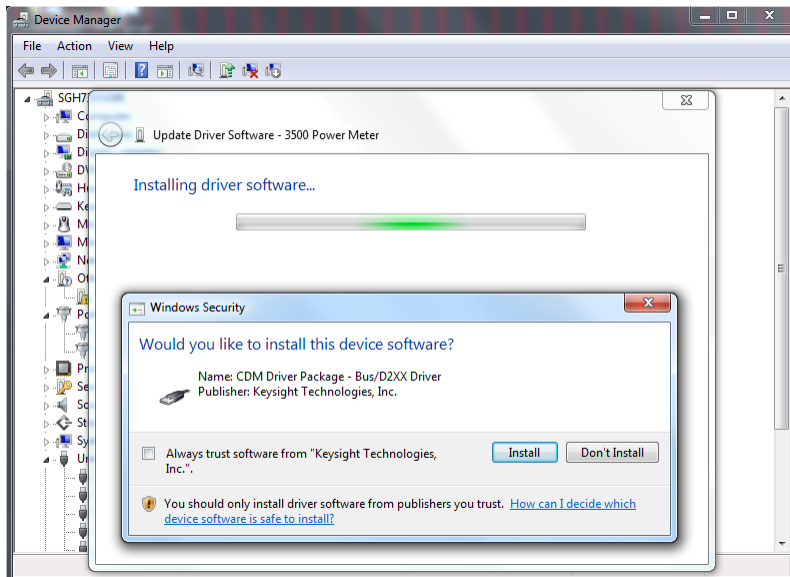
3. Click "**Browse my computer for driver software**" to locate the V3500A USB Driver folder.



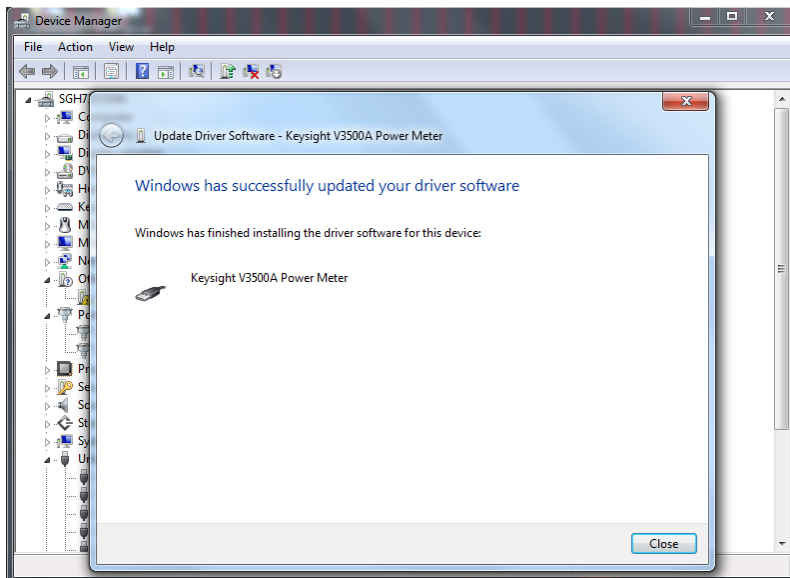
4. Select the **Keysight V3500A Driver** folder, and then click **“Next”**.  
The location of the folder is at C:\Program Files (x86)\Keysight.



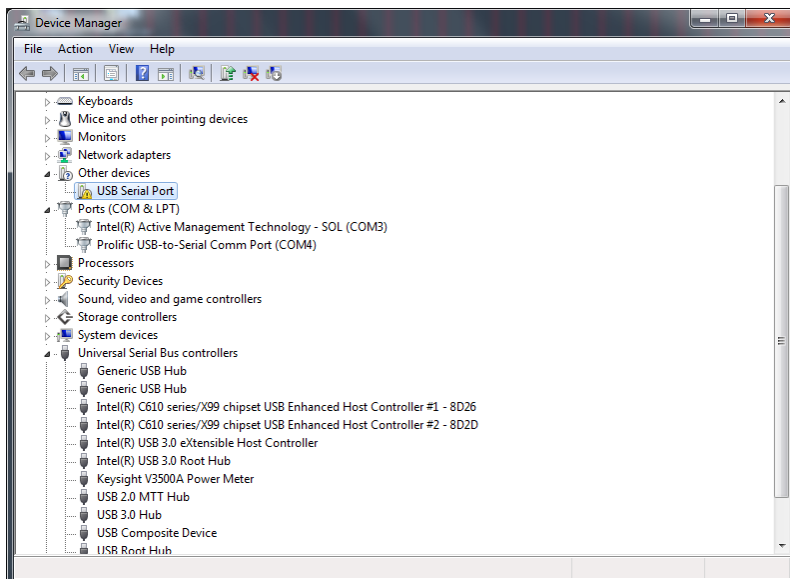
5. A **Windows Security** window will appear. Click **“Install”** to proceed with the installation.



6. When the installation has completed, click “Close” to exit the installation.



7. Go back to the **Device Manager** window. Under **Other devices** tab, repeat **Step 2** to **Step 6** for the driver installation of ‘**USB Serial Port**’.



- After all the installation have completed, the '**Keysight V3500A Power Meter**' will appear under both **Ports (COM & LPT)** and **USB controllers** tabs. This indicates that the drivers are correctly installed and present.

