

---

## **E5091A USB Driver Installation**

This manual describes how to install the E5091A USB Driver into the E5070A/E5071A. This installation is not required if the driver has already been installed into the E5070A/E5071A.

---

## E5091A USB Driver Installation

The E5070A/E5071A with the following serial numbers is required to install the E5091A USB Driver for using the E5091A with it. This installation is not required if the driver has already been installed into the E5070A/E5071A.

E5070A serial numbers: JP1KJ00100 through 111

E5071A serial numbers: JP1KJ00100 through 248, 251, 253

### Required Equipment

- E5070A or E5071A (with keyboard and mouse).
- E5091A
- USB cable (furnished with E5091A)
- One blank floppy disk (DOS format).

### How to make E5091A USB Driver Installation Disk

The following is the procedure to make the E5091A USB Driver Installation Disk.

**Step 1.** Copy the following files from Agilent Technologies web site to the floppy disk using your computer's FDD.

- e5091.inf
- e5091.sys
- e5091ldr.sys

### How to install E5091A USB Driver

The following is the procedure to install the E5091A USB Driver.

**Step 1.** Prepare the E5091A USB Driver installation disk.

**Step 2.** Connect the mouse, the keyboard, and the USB cable to the E5070A/E5071A rear panel. Then turn the E5070A/E5071A on.

**Step 3.** Exit from the E5070A/E5071A Measurement Display.

1. Press **System** key.
2. Press **Service Menu - Restart Menu** on the menu bar, and the Password dialog box will appear.
3. Enter the password **e507xa** into the Password box.
4. Press **Restart as Service** on the menu bar, and the instrument will be restarted.

**Step 4.** Turn the E5091A off. Then connect the USB cable to the E5091A rear panel.

**Step 5.** Install the E5091A Driver.

1. Turn the E5091A on. Add New Hardware Wizard will start automatically as shown in Figure 1.

**Figure 1**

### Add New Hardware Wizard (Start)



2. Click on the **Next >** button.
3. Mark the **Search for the best driver for your device** as shown in Figure 2. Click on the **Next >** button.

**Figure 2**

### Add New Hardware Wizard (Search/Select)



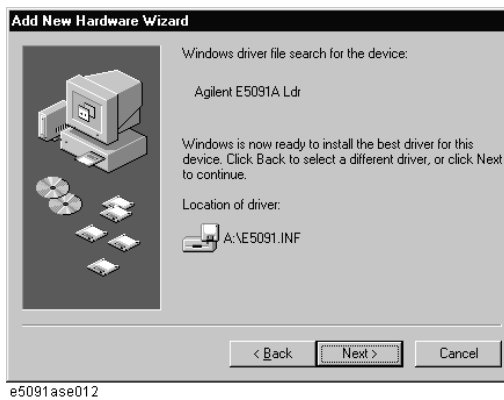
4. Insert the E5091A USB Driver Installation disk into the FDD of the E5070A/E5071A
5. Mark the **Floppy disk drives** as shown in Figure 3. Click on the **Next >** button.

**Figure 3 Add New Hardware Wizard (Location Selection)**



6. Confirm that Windows is ready to install as shown in Figure 4, and click on the **Next >** button.

**Figure 4 Add New Hardware Wizard (Search)**



7. Confirm that the driver has been installed as shown in Figure 5, and click on the **Finish** button.

**Figure 5 Add New Hardware Wizard (Finish)**



8. New Hardware Found dialog box is displayed for a moment, and the driver is automatically installed.

**Step 6.** Double-click “**Restart as instr**” icon on the Windows desktop, and the instrument will be restarted and the measurement screen will appear.