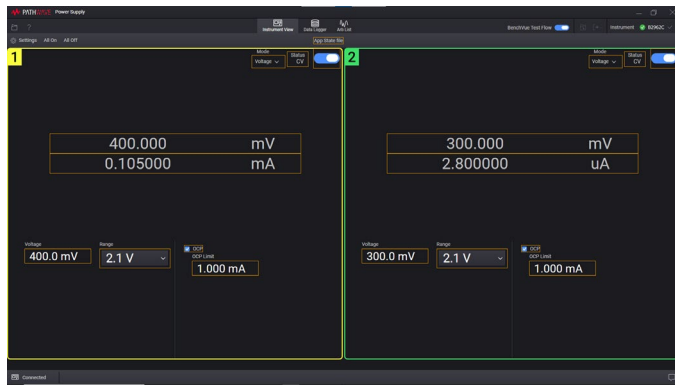


Unlock the Versatility of B2900C SMUs for Basic IV Sourcing and Advanced Characterization

The B2900C series SMUs offer multiple software control options, empowering you to select the best solution for your application needs.

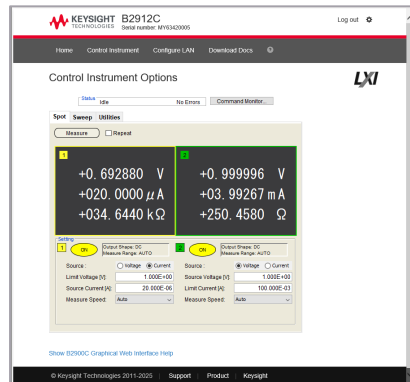
PathWave BenchVue

Source constant voltage or current and control other Keysight instruments



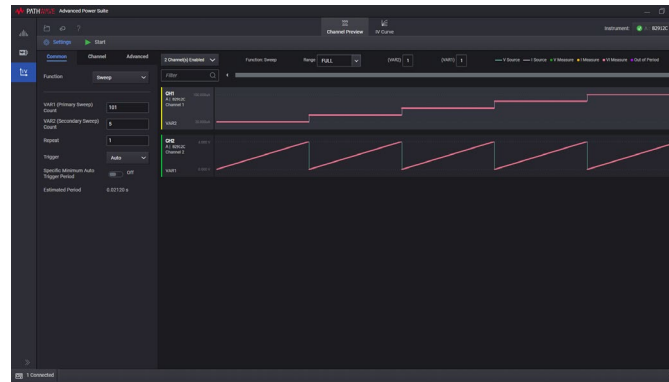
Graphical web interface

Use your web browser to make basic measurements



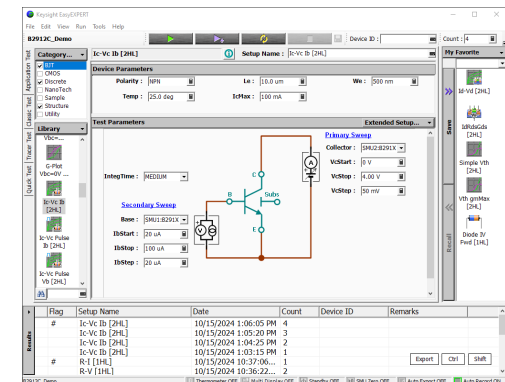
PathWave IV Curve Software

Easy-to-use GUI software for IV measurement without programming



EasyEXPERT group+

Powerful software for detailed characterization and analysis of devices, circuits and materials



Software options

The table summarizes the features and functions of the software.

		PathWave BenchVue	Graphical web interface	PathWave IV Curve Software	EasyEXPERT group+
Supported model	B2900 series	✓	✓	✓	✓
	B2960 series	✓	✓	✓	
	B2980 series		✓		
Supported interface	GPIO	✓		✓	✓
	USB	✓		✓	
	LAN	✓	✓	✓	
Source mode	Constant voltage	✓	✓	✓	✓
	Constant current	✓	✓	✓	✓
	Sweep output	✓	✓	✓	✓
Functions	Graph	✓		✓	✓
	Math			✓	✓
	Analysis				✓
	Database				✓
	Export screen image	✓		✓	✓
	Export data	✓		✓	✓
	Multiple unit control	✓		✓	✓
	Application test setup	✓			✓

Key features of the B2900 precision instrument family

B2900 Precision Source / Measure Unit

- Displays I-V curves and other types of graphs on the front panel
- Provides best-in-class 6.5-digit sourcing and measurement resolution
- Covers a wide range of applications from 100 nV / 10 fA to 210 V/3 A DC and 10.5 A pulsed

B2960 Series 6.5-Digit Low Noise Power Source

- Offers precision current and voltage source with ultra-low noise of 10 μ Vrms
- Features 6.5-digit resolution (100 nV/10 fA)
- Includes innovative and precision ARB capability with six built-in waveforms at speeds up to 10 kHz

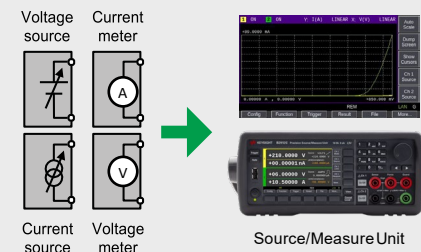
B2980 Series Femto / Picoammeter & Electrometer

- Achieves world's-best current measurement resolution of 0.01 fA (0.01×10^{-15} A)
- Measures resistance up to 10 P Ω (10×10^{15} Ω)
- Available in battery-powered versions for low-level measurements in the presence of AC power line noise

Keysight B2900 Precision Source / Measure Unit (SMU)

The SMU combines the capabilities of a current source, a voltage source, a current meter and a voltage meter along with the capability to switch easily between these various functions into a single instrument. Its innovative graphical user interfaces improve usability and productivity of bench-top tests, debug and characterizations dramatically.

www.keysight.com/find/precisionSMU



Keysight enables innovators to push the boundaries of engineering by quickly solving design, emulation, and test challenges to create the best product experiences. Start your innovation journey at www.keysight.com.

This information is subject to change without notice. © Keysight Technologies, 2025, Published in USA, March 18, 2025, 3125-1153.EN