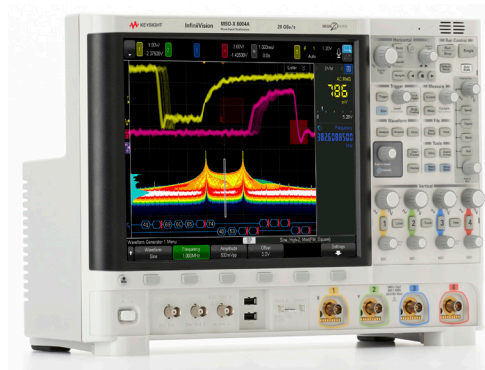


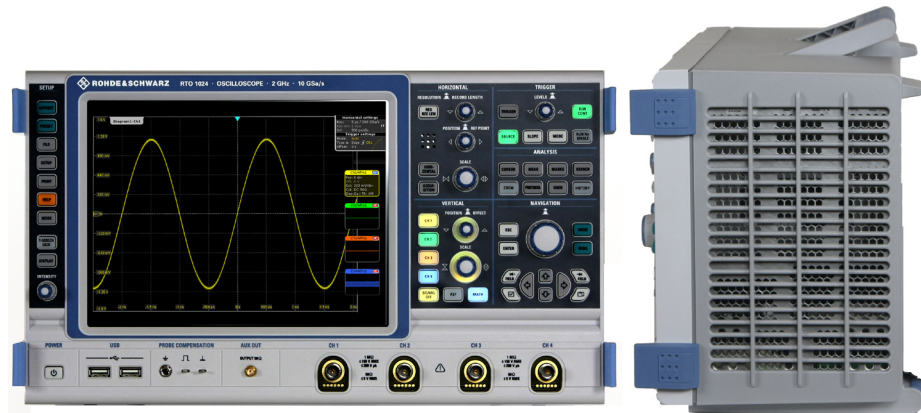
Keysight Competitive Comparison

Keysight 6000 X-Series versus Rohde & Schwarz RTO1000

Keysight 6000 X-Series

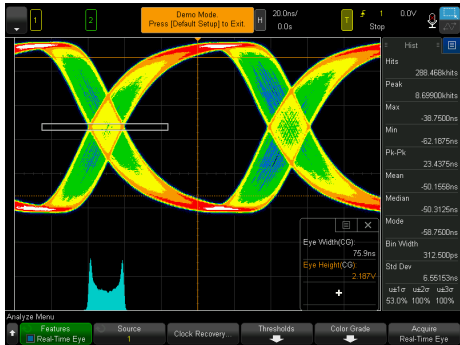


Rohde & Schwarz RTO1000 Series

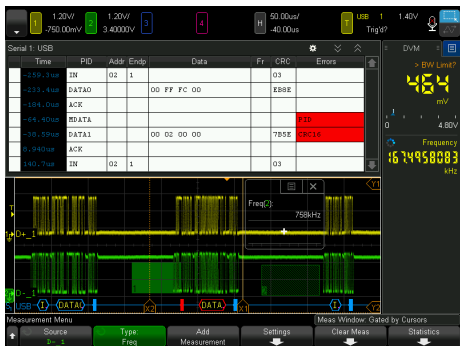


The Keysight Technologies, Inc. 6000 X-Series oscilloscopes offer bandwidths up to 6 GHz with the key benefits of the InfiniiVision line: affordability, excellent visualization, 6-in-1 integration and investment protection. Speed your debugging with its uncompromised fast update rate, combined with the industry's only hardware zone trigger. Operation is simplified with a localized GUI that is designed for touch and the industry's first 12.1" multi-touch capacitive display. Voice control makes doing oscilloscope inputs easy while your hands are holding probes.

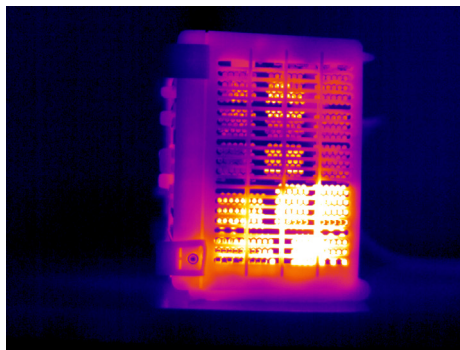
	R&S RTO1000		Keysight 6000 X-Series
Bandwidth	Up to 4 GHz	X	Up to 6 GHz ✓
Max sampling rate	10 GSa/s to up to 2 GHz	X	20 GSa/s to all models ✓
Standard memory depth (2 ch)	20 GSa/s to 4 GHz	✓	Up to 4 M
	Up to 40 M	✓	Up to 4 M X
RMS noise at 1 mV/div, 50 Ω	240 uV at 4 GHz	X	147 uV at 4 GHz ✓
Waveform update rate (vectors on)	Up to 600,000 wfms/s	✓	Up to 450,000 wfms/s ✓
Zone trigger	Not available	X	Yes – hardware based ✓
			> 100 K triggers/s
Display	10.4" resistive touch	X	12.1" capacitive multi-touch ✓
Other integration	Not available	X	2 ch AWG, counter, DVM ✓
Operating system	Windows 7	X	Embedded ✓
Std passive probe	500 MHz	X	700 MHz ✓
Input voltage	150 Vrms	X	300 Vrms ✓
Localized GUI	No	X	Yes ✓
Voice control	No	X	Yes – localized ✓
Size	8.0" deep, 21 lbs.	X	6.1" deep, 15 lbs. ✓
Operating range	0 to 45 °C, 3,000 M	X	0 to 50 °C, 4,000 M ✓
Power consumption	450 W max	X	250 W max ✓
Sound level	35 to 38 dB SPL	X	32 dB SPL (up to 4x quieter) ✓
Standard calibration interval	1 year	X	2 years ✓
Mean Time Between Failure (MTBF)	Not specified	X	> 120,000 hours ✓
BenchVue support	Not available	X	Yes ✓



Jitter/RTE



Protocol



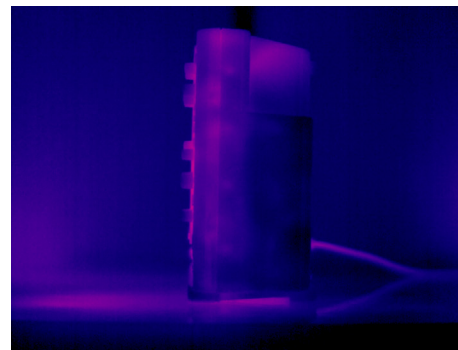
Rohde RTO consumes almost double the power and runs significantly hotter than the 6000 X-Series.



FFT



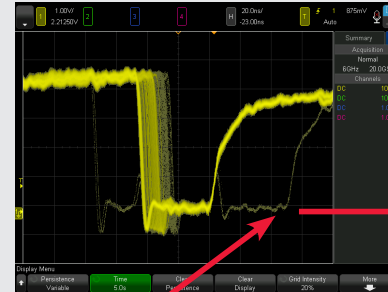
12.1" capacitive touch screen



The 6000 X-Series' low power consumption helps it reach an excellent MTBF of > 120,000 hours.



An integrated dual channel function/arbitrary waveform generator allows you to generate differential, clock and data, two channel modulation, and IQ signals. An integrated waveform editor allows you to edit waveforms without additional equipment and saves you bench space.



A fast update rate allows you to see an infrequent glitch, but then you want to isolate it. With the 6000 X-Series' hardware zone trigger, you can draw a box to isolate the signal of interest. If you can see it, you can trigger on it.

KEYSIGHT SERVICES

Accelerate Technology Adoption. Lower costs.

www.keysight.com/find/services

Keysight Services helps you improve productivity and product quality with our comprehensive service offerings of one-stop calibration, repair, asset management, technology refresh, consulting, training, and more.



Unlocking Measurement Insights

This information is subject to change without notice.
© Keysight Technologies, 2017
Published in USA, December 1, 2017
5992-0959EN
www.keysight.com