

Installing the N6421A WiMAX Protocol Logging and Analysis Application from a Web Download

Introduction

This topic describes the installation of the N6421A WiMAX Protocol Logging and Analysis application on your computer.

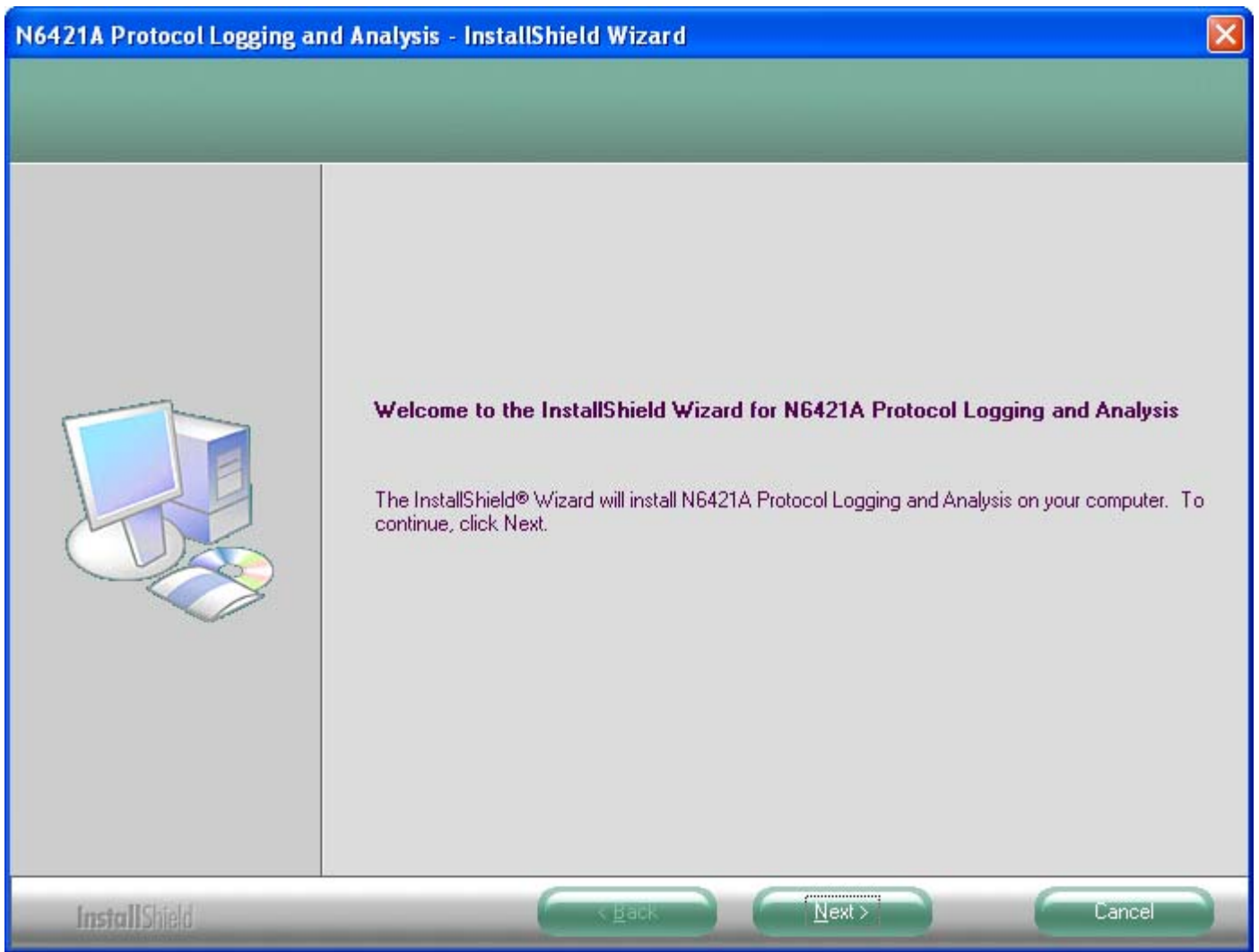
The N6421A WiMAX Protocol Logging Application

The N6421A WiMAX Protocol Logging and Analysis application is delivered from the Internet as an executable (.exe) file.

Procedure

To install the N6421A WiMAX Protocol Logging and Analysis application on the host computer, proceed as follows:

1. After downloading, locate and double click the N6421A WiMAX Protocol Logging and Analysis application installation file **<setup-N6421A-5.2.1.1.exe>** (The version number at the end of the filename is subject to change).
2. Click **OK** to start the installation. The Welcome screen is displayed.



3. Click **Next>** and follow the displayed instructions to complete the installation.

N6421A Protocol Logging and Analysis - InstallShield Wizard

InstallShield Wizard Complete

The InstallShield Wizard has successfully installed N6421A Protocol Logging and Analysis. Click Finish to exit the wizard.



InstallShield

< Back

Finish

Cancel

NOTE

Ensure the License Key is located in a USB port on your computer before starting the WiMAX Logging and Analysis applications.