

Keysight Technologies IO Libraries Suite 17

Data Sheet

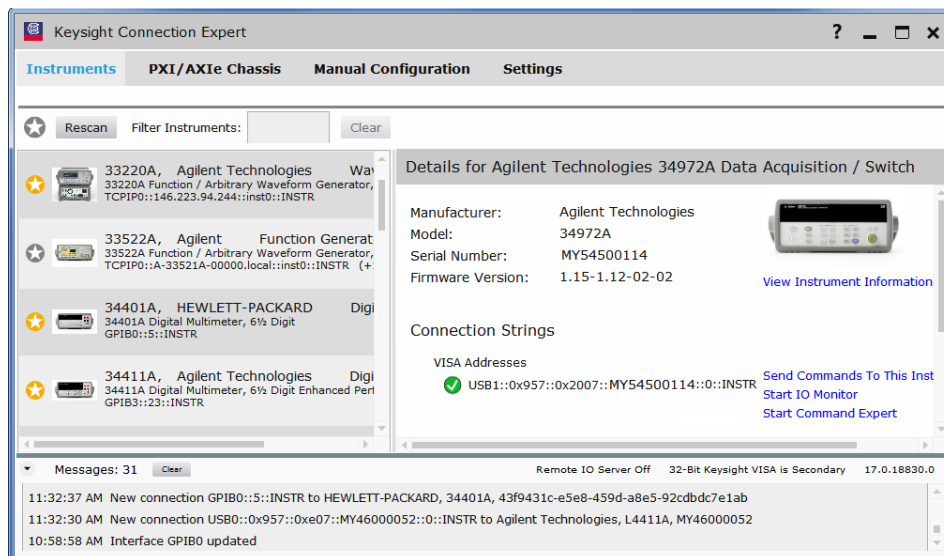
The Next Generation of Instrument Control

With more features and capabilities, it's easier than ever to get connected



- Faster startup
- Auto-discovery of instruments
- Instrument-centric view

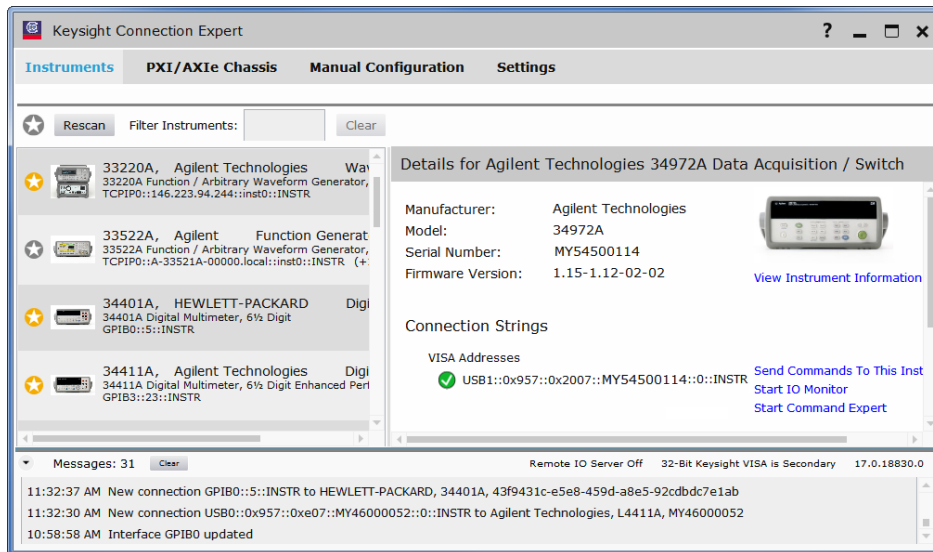
www.keysight.com/find/iosuite



Instrument Discovery

The Keysight Technologies, Inc. IO Libraries Suite 17 auto-discovers more instruments including those that physically connect to your PC (including GPIB, USB, and PXI) and many of those on your local LAN subnet. The non-intrusive discovery service minimizes disturbances to instruments. For Keysight GPIB instruments, bus addressing and handshaking are minimized. For all instruments, identification queries (*IDN?) are sent less often.

Keysight Connection Expert has enhanced instrument discovery and a streamlined, modern interface that lets you get to your most-used information and options quickly.



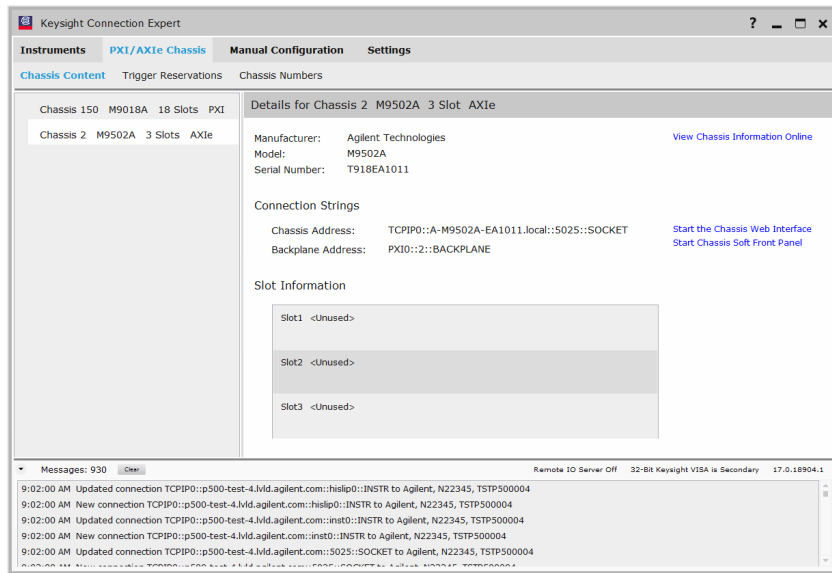
Most instruments are automatically displayed in Connection Expert's Instruments view. You need to add instruments manually only in certain situations.

The Favorite Instrument feature allows you to control the list of instruments you see in the Connection Expert view. Just toggle the star icon to the left of each: a gold star indicates that the instrument is a favorite, and a gray star indicates that it is not. You can filter on the favorites and view only the information you need. If an instrument has previously been connected, any explicit Favorite setting (off or on) will be restored when the same instrument is reconnected. The Favorites feature can be used to define what instruments are returned in your programs when using VISA functions.

Enhanced instrument discovery means there is no need to wait for a refresh to complete. Simply power on the instrument or rescan from the updated Connection Expert interface and continue working while the discovery service finds and updates instruments in the background. The Instruments view always shows the latest, up-to-date information.

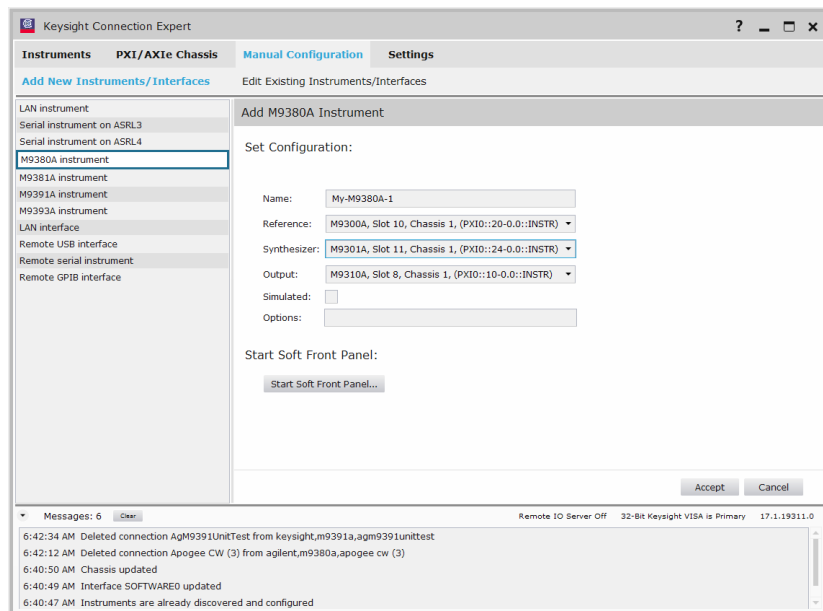
Modular Solution Support

Keysight IO Libraries Suite 17 provides many improvements related to connecting to and controlling PXI and AXIe chassis. The PXI/AXIe Chassis view in Connection Expert shows the chassis with details of the card in each slot. From the PXI/AXIe Chassis view, you can see chassis and instrument addresses, start soft front panels, make trigger reservations, customize the chassis numbering in multi-chassis systems, and delete manually-added chassis.



There is also support for the PXI BACKPLANE resource in Keysight VISA and conformance to the latest PXI 2012 specifications. Included in PXI 2012 is better interoperability between vendor's PXI Resource Managers.

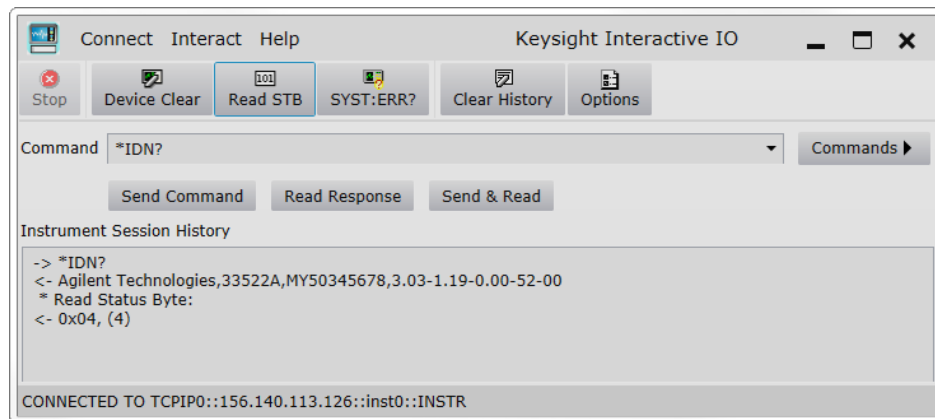
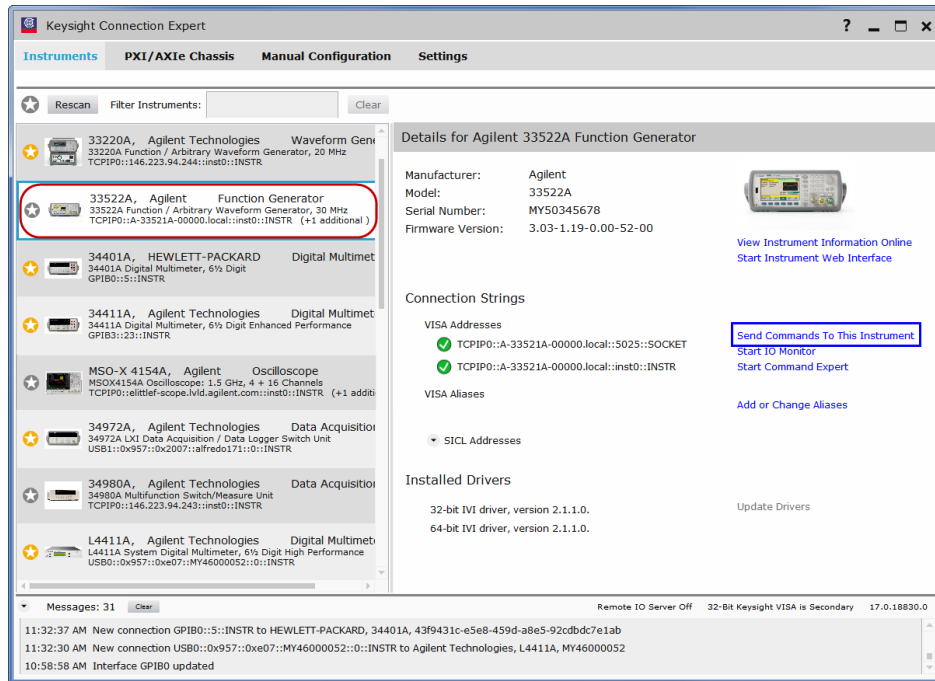
Multi-module instruments allow you to easily make measurements that require several modular instruments (for example, PXI cards) to work in concert. It is simple to create the multi-module instrument that can be edited and used as you would any other instrument.



Instrument Control

Send commands and troubleshoot I/O easily

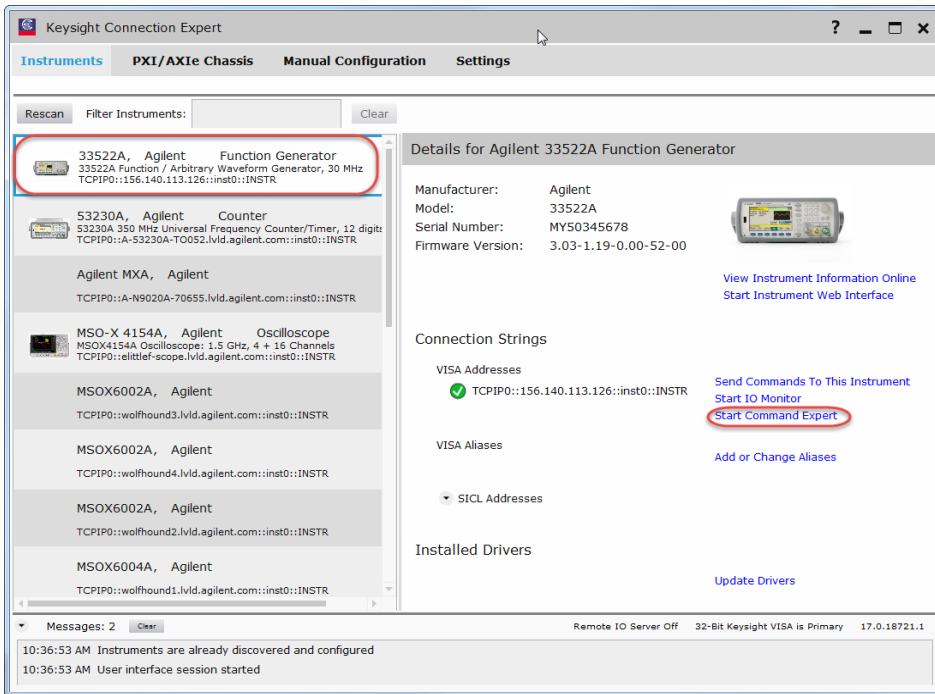
From the Instruments view, click an instrument to see its details (as shown by the red oval in the diagram below), then click **Send Commands to This Instrument** in the action area at the right side of the screen, shown in the blue rectangle below.



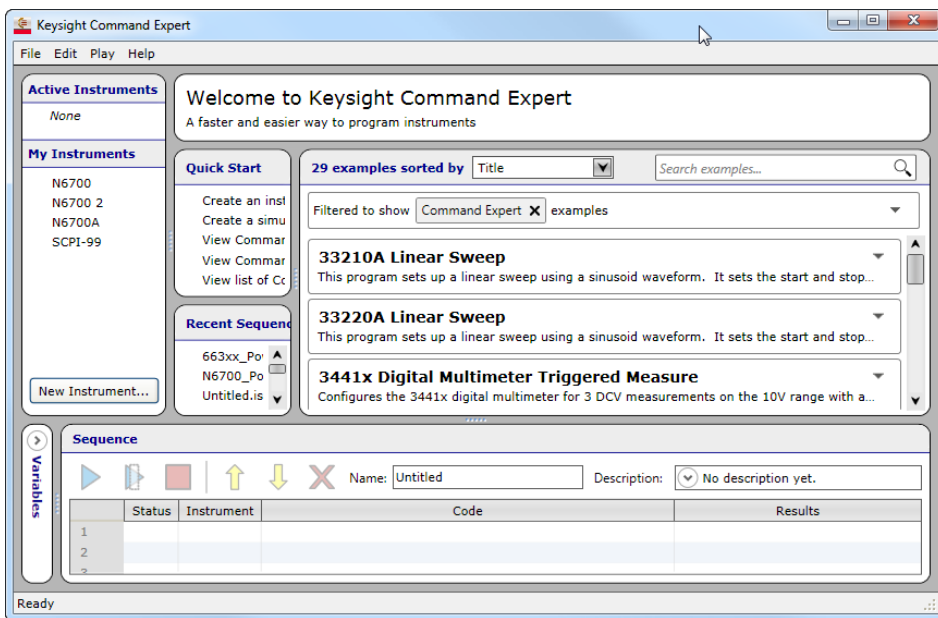
Take the next step with Command Expert



Command Expert provides fast and easy instrument control in many PC environments. Click on **Start Command Expert** to launch the software.



After instruments are discovered, Command Expert makes it easy to find, use, and view full documentation for SCPI, IVI-C, and IVI-COM commands. It simplifies the process of retrieving measurement data from instruments and provides seamless integration with Excel, VEE, SystemVue, MATLAB, Visual Studio, Python, and LabVIEW.



For additional information, tutorials, videos and to download the software - www.keysight.com/find/commandexpert

Across instrument platforms, see how easy it is to connect and control with IO Libraries Suite 17

Find more utilities for instrument use and management - www.keysight.com/find/instrumentcontrol

Interface cards and converters - www.keysight.com/find/connectivity

All Keysight software - www.keysight.com/find/software

Free 30-day trials of Keysight software - www.keysight.com/find/free_trials

Specifications

Supported interfaces*

GPIB:	Standard IEEE 488.1
USB:	USB 3.0 or lower (with USBTMC-USB488, USBTMC, and Composite protocol)
LAN/Ethernet:	Standard LAN (with HiSLIP, LXI, VXI-11, SIDL-LAN and sockets)
RS-232/Serial	
PXI:	AXIe, PXI, PXIe, PCI and PCIe® devices
VXI:	FireWire (32/64-bit, not supported on Windows 8)

* See the latest information on supported interfaces and operating systems for IO Libraries Suite 17 at www.keysight.com/find/iolib_revmatrix

Supported development environments and supported I/O software

VB6:	VISA COM, VISA, SIDL, Keysight 488, Excel VBA
C/C++:	VISA COM, VISA, Keysight 488
.NET languages (VB.NET, C#):	VISA COM, VISA, Keysight 488
LabVIEW:	VISA, Keysight 488
MATLAB:	VISA
VEE Pro:	Direct I/O and/or instrument drivers

I/O utilities

Connection Expert	Automatically scans your instrument IO, helps you get connected quickly and easily and displays the status of your instruments and I/O interfaces.
Interactive IO	Lets you quickly send commands to instruments and read responses.
IO Monitor	Lets you monitor and debug I/O calls made on any of Keysight's supported buses using SIDL, VISA, VISA COM, or Keysight IVI instrument drivers (drivers released after September 18, 2010)
IO control	Provides easy access to the IO Libraries Suite from the Windows system tray.
VXI resource manager	Provides configuration of the IEEE 1394 connection from PC to VXI.
viFind32/viFind64	Debug utility uses VISA functions to find resources and lists them in a console window.
PXI Chassis	Provides a new PXI/AXIe Chassis view showing PXI and AXIe chassis with details of the card in each slot. You can see chassis and instrument addresses, start soft front panels, make trigger reservations, customize the chassis numbering in multi-chassis systems, and delete manually-added chassis.

System Requirements: Keysight IO Libraries Suite 17

PC software: Operating system

- Windows 10 32-bit and 64-bit (Windows 10, Windows 10 Pro, Windows 10 Enterprise, and Windows 10 Education) Windows 8 and 8.1 32-bit and 64-bit (Windows 8/8.1, Windows 8/8.1 Pro, and Windows 8/8.1 Enterprise)
- Windows 7 SP1 32-bit and 64-bit (Starter, Home Basic, Home, Premium, Professional, Ultimate, Enterprise)
- Windows Server 2012 64-bit (Standard)
- Windows Server 2008 R2 SP1, 64-bit (Standard and Enterprise)

PC hardware

- Processor: 1 Ghz 32-bit (x86), 1Ghz 64-bit (x64), no support for Itanium64 or Windows 8 RT
- Hard disk space required: 2 GB
- RAM: Windows 7, Windows 8/8.1, and Windows 10: 1 GB minimum
- Display: 1024 x 768 96 or 120 DPI
- Input device: Microsoft mouse or compatible pointing device
- Device for installation: DVD-ROM
- Web connection for installation, upgrades and drivers

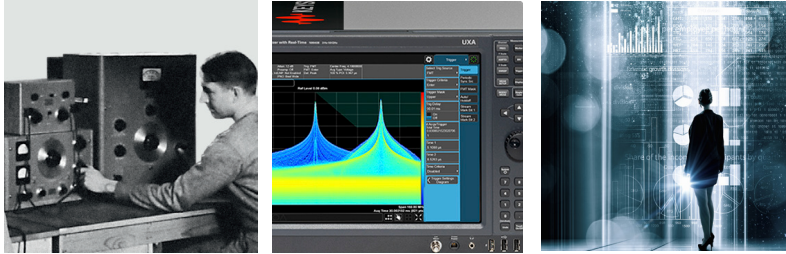
Instrument Control DVD contents

- IO Libraries Suite
 - I/O libraries: VISA, VISA COM, SICL, Keysight 488
 - Connection Expert
 - I/O utilities
 - Full online help for all I/O libraries and utilities
- Keysight Command Expert
- Keysight BenchVue
- Version 2.3.0 of the IVI Shared Components (see www.ivifoundation.org/)
 - Microsoft .NET Framework 2.0 SP2
 - Microsoft .NET Framework 4.0

Evolving Since 1939

Our unique combination of hardware, software, services, and people can help you reach your next breakthrough. We are unlocking the future of technology.

From Hewlett-Packard to Agilent to Keysight.



For more information on Keysight Technologies' products, applications or services, please contact your local Keysight office. The complete list is available at: www.keysight.com/find/contactus

Americas

Canada	(877) 894 4414
Brazil	55 11 3351 7010
Mexico	001 800 254 2440
United States	(800) 829 4444

Asia Pacific

Australia	1 800 629 485
China	800 810 0189
Hong Kong	800 938 693
India	1 800 11 2626
Japan	0120 (421) 345
Korea	080 769 0800
Malaysia	1 800 888 848
Singapore	1 800 375 8100
Taiwan	0800 047 866
Other AP Countries	(65) 6375 8100

Europe & Middle East

Austria	0800 001122
Belgium	0800 58580
Finland	0800 523252
France	0805 980333
Germany	0800 6270999
Ireland	1800 832700
Israel	1 809 343051
Italy	800 599100
Luxembourg	+32 800 58580
Netherlands	0800 0233200
Russia	8800 5009286
Spain	800 000154
Sweden	0200 882255
Switzerland	0800 805353
	Opt. 1 (DE)
	Opt. 2 (FR)
	Opt. 3 (IT)
United Kingdom	0800 0260637

For other unlisted countries: www.keysight.com/find/contactus (BP-9-7-17)

DEKRA Certified
ISO 9001 Quality Management System

www.keysight.com/go/quality
Keysight Technologies, Inc.
DEKRA Certified ISO 9001:2015
Quality Management System

myKeysight

myKeysight

www.keysight.com/find/mykeysight

A personalized view into the information most relevant to you.

http://www.keysight.com/find/emt_product_registration

Register your products to get up-to-date product information and find warranty information.

KEYSIGHT SERVICES

Accelerate Technology Adoption.
Lower costs.

Keysight Services

www.keysight.com/find/service

Keysight Services can help from acquisition to renewal across your instrument's lifecycle. Our comprehensive service offerings—one-stop calibration, repair, asset management, technology refresh, consulting, training and more—helps you improve product quality and lower costs.



Keysight Assurance Plans

www.keysight.com/find/AssurancePlans

Up to ten years of protection and no budgetary surprises to ensure your instruments are operating to specification, so you can rely on accurate measurements.

Keysight Channel Partners

www.keysight.com/find/channelpartners

Get the best of both worlds: Keysight's measurement expertise and product breadth, combined with channel partner convenience.

PCI-SIG®, PCIe® and the PCI Express® are US registered trademarks and/or service marks of PCI-SIG.