

Keysight i3070 In-Circuit Test Software

Notices

© Keysight Technologies 2021

No part of this manual may be reproduced in any form or by any means (including electronic storage and retrieval or translation into a foreign language) without prior agreement and written consent from Keysight Technologies as governed by United States and international copyright laws.

Manual Part Number

E9901-96022

Edition

Edition 1, August 2021
Printed in Malaysia

Published by:
Keysight Technologies
1400 Fountaingrove Parkway
Santa Rosa, CA 95403-1738
United States

Warranty

THE MATERIAL CONTAINED IN THIS DOCUMENT IS PROVIDED "AS IS," AND IS SUBJECT TO BEING CHANGED, WITHOUT NOTICE, IN FUTURE EDITIONS. FURTHER, TO THE MAXIMUM EXTENT PERMITTED BY APPLICABLE LAW, KEYSIGHT DISCLAIMS ALL WARRANTIES, EITHER EXPRESS OR IMPLIED WITH REGARD TO THIS MANUAL AND ANY INFORMATION CONTAINED HEREIN, INCLUDING BUT NOT LIMITED TO THE IMPLIED WARRANTIES OF MERCHANTABILITY AND FITNESS FOR A PARTICULAR PURPOSE. KEYSIGHT SHALL NOT BE LIABLE FOR ERRORS OR FOR INCIDENTAL OR CONSEQUENTIAL DAMAGES IN CONNECTION WITH THE FURNISHING, USE, OR PERFORMANCE OF THIS DOCUMENT OR ANY INFORMATION CONTAINED HEREIN. SHOULD KEYSIGHT AND THE USER HAVE A SEPARATE WRITTEN AGREEMENT WITH WARRANTY TERMS COVERING THE MATERIAL IN THIS DOCUMENT THAT CONFLICT WITH THESE TERMS, THE WARRANTY TERMS IN THE SEPARATE AGREEMENT WILL CONTROL.

Technology Licenses

The hardware and/or software described in this document are furnished under a license and may be used or copied only in accordance with the terms of such license.

U.S. Government Rights

The Software is "commercial computer software," as defined by Federal Acquisition Regulation ("FAR") 2.101. Pursuant to FAR 12.212 and 27.405-3 and Department of Defense FAR Supplement ("DFARS") 227.7202, the U.S. government acquires commercial computer software under the same terms by which the software is customarily provided to the public. Accordingly, Keysight provides the Software to U.S. government customers under its standard commercial license, which is embodied in its End User License Agreement (EULA), a copy of which can be found at <http://www.keysight.com/find/sweula>. The license set forth in the EULA represents the exclusive authority by which the U.S. government may use, modify, distribute, or disclose the Software. The EULA and the license set forth therein, does not require or permit, among other things, that Keysight: (1) furnish technical information related to commercial computer software or commercial computer software documentation that is not customarily provided to the public; or (2) relinquish to, or otherwise provide, the government rights in excess of these rights customarily provided to the public to use, modify, reproduce, release, perform, display, or disclose commercial computer software or commercial computer software documentation. No additional government requirements beyond those set forth in the EULA shall apply, except to the extent that those terms, rights, or licenses are explicitly required from all providers of commercial computer software pursuant to the FAR and the DFARS and are set forth specifically in writing elsewhere in the EULA. Keysight shall be under no obligation to update, revise or otherwise modify the Software.

Safety Notices

WARNING

A WARNING notice denotes a hazard. It calls attention to an operating procedure, practice, or the like that, if not correctly performed or adhered to, could result in personal injury or death. Do not proceed beyond a WARNING notice until the indicated conditions are fully understood and met.

CAUTION

A CAUTION notice denotes a hazard. It calls attention to an operating procedure, practice, or the like that, if not correctly performed or adhered to, could result in damage to the product or loss of important data. Do not proceed beyond a CAUTION notice until the indicated conditions are fully understood and met.

i3070 Software Installation

Preparation	4
Installing the i3070 Software	7
Installing Software Licenses	13
Other Tasks	19
Troubleshooting Software Installation	22

This guide explains how to install the Keysight i3070 In-Circuit Test software release 10.20p. This software release can be used for:

- Upgrading i3070 systems with software release 10.xxp.
- Upgrading i3070 systems with software release 09.xxp.
- First-time installation on new testhead controllers or test development workstations running Windows 10 (64-bit).

In case of difficulty...

To contact Keysight technical support, go to www.keysight.com/find/contactus.

Preparation

- 1 Ensure that the PC meets the [System requirements](#) on page 5.
- 2 Make a complete system backup before installing the software.
- 3 If you are upgrading a system:
 - a At least back up the critical files listed in [Table 2](#) on page 6, if you are unable to do a full backup.
 - b Remove the previous releases of the i3070 software as described in [Uninstalling the i3070 In-Circuit Test Software](#) on page 23.
- 4 Redeem your software licenses following the instructions in your Software Entitlement Certificate.

Then install the i3070 In-Circuit Test software as described in [Installing the i3070 Software](#).

System requirements

Before installing the software, ensure that the workstation has a DVD-ROM drive and meets the following specifications.

Table 1 System requirements

	Specifications
Processor	Recommended: Intel Core i5 (4th Generation or newer) or equivalent
Operating System	Windows 10 Pro (64-bit) Windows 10 Enterprise (64-bit) version 1903 or later Ensure that all Windows updates are installed.
Memory	Recommended: 8 GB of RAM (minimum 4 GB)
Available Disk Space	Recommended: 10 GB (minimum 5 GB), must be on drive C
Display Properties	<ul style="list-style-type: none">▪ Screen resolution: at least 1280 x 1024 pixels▪ Color quality: at least 16-bit
Language Setting	Must be English (United States).

NOTE

If you are upgrading a controller to Windows 10, ensure that it meets the Windows system requirements and there are no compatibility issues.

Critical folders and files

If you are upgrading a system, you can use the following shell command to capture most of the computer's networking information:

```
ipconfig /all > mynetwork.txt
```

This saves the networking data to *mynetwork.txt*, which you can refer to when restoring the network settings.

Back up the critical files if you are unable to make a complete system backup.

Table 2 Critical folders and files

Folders/files	Description
\windows\system32\drivers\etc\hosts	Local hostname resolution and networking information
\windows\system32\drivers\etc\bootptab	Hardware addresses for the testhead ¹
\<installation folder>\autofile	Fixtures ID auto numbers
\<installation folder>\boards	Board test programs. If your board files are in a different folder, back up that folder.
\<installation folder>\diagnostics\th1\ASRU_Reference	System Calibration file (system dependent)
\<installation folder>\diagnostics\th1\config	Testhead hardware configuration ¹
\<installation folder>\home	User's home folder
\<installation folder>\standard\config	Testhead resources configuration ¹
\<installation folder>\dev	Back up any ps (DUT power supply) files that were customized.
Any other custom folders and files containing important data.	Any other user data

1. These files are not on a test development workstation.
2. The default installation folder may be *I3070_ICT* or *Agilent_ICT*.

Installing the i3070 Software

CAUTION

- All software must be installed to drive C, which must also be the drive where the operating system is installed.
- Disable anti-virus software before starting the installation. Otherwise, some of the components might not install properly. Remember to reactivate the anti-virus software after the i3070 software is installed.
- Unless directed otherwise, always accept the default selections. Otherwise, errors could occur when using the software.

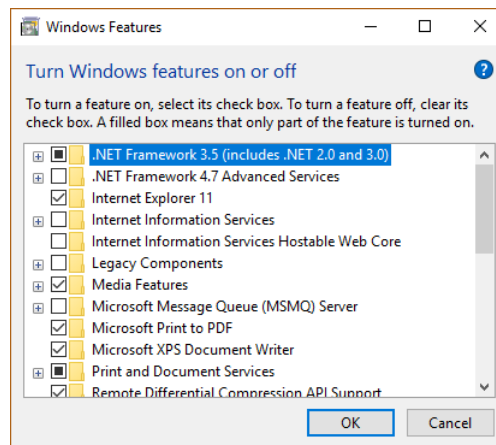
Before installation

Task

Steps

Turn on .NET Framework:

- a Use Search on the taskbar to find **Control Panel** and click **Programs and Features > Turn Windows features on or off**.
- b In the Windows Features dialog box, select **.NET Framework 3.5 (includes .NET 2.0 and 3.0)** and click **OK**.



You do not need to select any of the items under .NET Framework 3.5, unless you are a developer who requires WCF script and handler mapping functionality.

- c Reboot the computer if prompted.

Installing the software

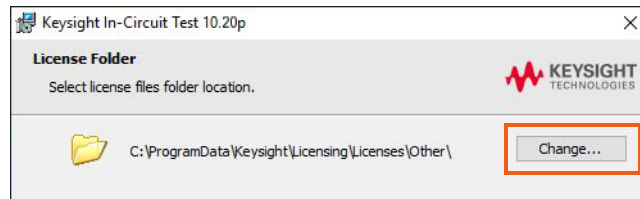
Task	Steps
1 Insert the Keysight installation disk into the drive. It should auto-start.	<p>a If the User Account Control dialog box appears, click Yes to allow the installation to continue.</p> <p>b In the installation window, click Install Keysight i3070 Software.</p> <hr/> <p>If the installation does not auto-start after several seconds:</p> <p>a Open Windows Explorer and browse to the disc.</p> <p>b Double-click <i>setup.exe</i> in the <i>W10\Software</i> folder.</p> <p>c If the User Account Control dialog box appears, click Yes to allow the installation to continue.</p> <hr/>
2 Install required components, if missing:	<p>The installer checks that system requirements are met and that required components are installed.</p> <ul style="list-style-type: none">▪ If system requirements are not met, the installer may exit. See Table 1 for the requirements.▪ If any component is missing, a dialog box will be displayed. <p>a Click Install if you see any of these dialog boxes. NOTE: This can happen at any time during the installation process.</p> <p>b When installation is complete, click Next to continue.</p> <hr/>
3 Accept license agreement:	<p>a Accept the license agreement and click Next to proceed.</p> <hr/>
4 In the Destination Folder window:	<p>a Accept the default folder for installing the software, unless you have a specific need to change it. NOTE: Spaces are not allowed in the path of the destination folder, which must be on drive C.</p> <p>b Click Next.</p> <hr/>

Installing the software (continued)

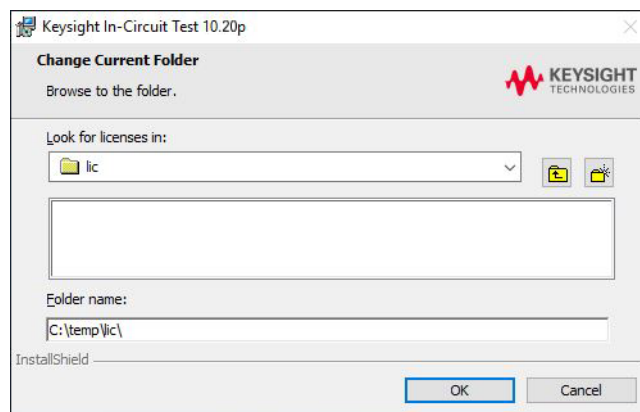
Task	Steps
------	-------

- 5 Check license files for **Testhead Controller (node-locked)**:
(Licenses will be installed on the controller together with the i3070 software.
If you are installing on a test development workstation, go to [step 6.](#))

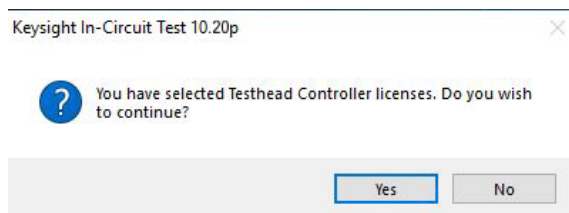
- a In the License Folder dialog box, click **Change**.



- b Select the temporary folder where you saved your license files and click **OK**.

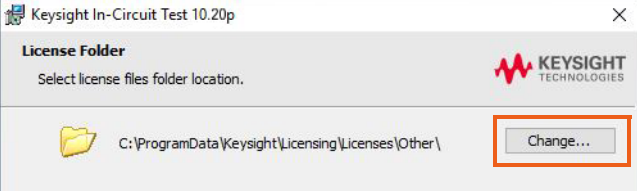
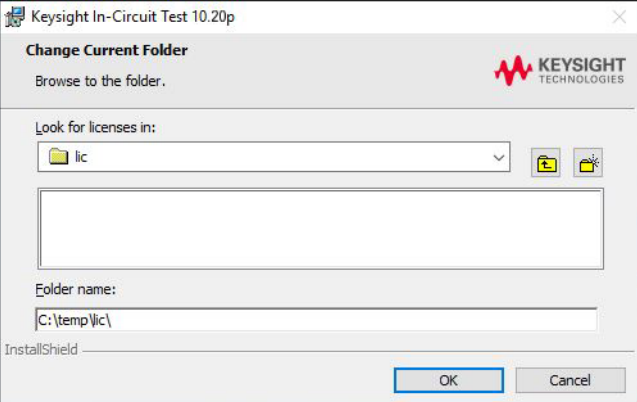


- c The installer lists the licenses found in the selected folder. Click **Next**.
d Click **Yes** to confirm you are installing on a testhead controller.



- e Skip to [step 7.](#)

Installing the software (continued)

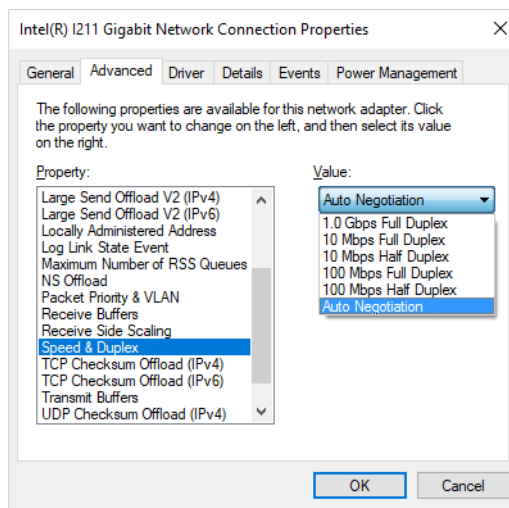
Task	Steps
<p>6 Check license files for Test Development Workstation (node-locked) (Licenses will be installed on the workstation together with the i3070 software.)</p>	<p>a In the License Folder dialog box, click Change.</p>  <p>b Select the temporary folder where you saved your license files and click OK.</p>  <p>c The installer lists the licenses found in the selected folder. Click Next.</p> <p>d Click Yes to confirm you are installing on a test development workstation.</p>
<p>7 Confirm installation:</p>	<p>The installer displays the third party applications to be installed.</p> <p>a Click Install to begin installation.</p> <p>b If prompted, click Install or Next to continue installation.</p>
<p>8 Finish installation:</p>	<p>a When installation is completed, click Finish.</p> <p>b Then click OK to reboot the computer.</p>
<p>9 Perform XVision optimization:</p>	<p>After Windows restarts, the XVision Optimizer window appears.</p> <p>a Click Yes to start the optimization process. It will take a few minutes to complete.</p> <p>b Repeat the optimization process for each user account. (The XVision Optimizer window will appear when each user logs on.)</p>
<p>10 If errors or other messages appear:</p>	<ul style="list-style-type: none"> ▪ If Quick Log Converter prompts for a missing template, ignore it. ▪ If prompted to install a new version of Keysight IO Libraries, do not do so. Select Skip this version and Quit.

Completing the software installation

Task	Steps
------	-------

The installation wizard procedure is now completed. Continue with the following tasks.

- | | |
|---|--|
| 1 | <p>If installing on a testhead controller, set the recommended Speed & Duplex on Testhead LAN to prevent lost heartbeat failure:</p> <ol style="list-style-type: none"> Right-click on the Testhead LAN icon in the Taskbar and select Status. In the Testhead LAN Status dialog box, click Properties. In the Testhead LAN Properties dialog box, click Configure. In the network adapter's Properties dialog box, click the Advanced tab. Select Speed & Duplex and change its value according to the Module Control Card in use.
ControlXTPB – Auto Negotiation
ControlXTPA – 100 Mb, half duplex |
|---|--|



- | | |
|---|--|
| 2 | <p>Check startup type for BOOTP Turbo:</p> <ol style="list-style-type: none"> Open Control Panel and click Administrative Tools > Services. In the service list, look for BOOTP Turbo and ensure that the Startup Type is Automatic. |
| 3 | <p>Set power options to never turn off the hard disks and monitor:</p> <ol style="list-style-type: none"> Open Control Panel and click Power Options. Click Change plan settings for the power plan in use. Set all options to Never and click Save changes. |
| 4 | <p>Check for software patches: Go to www.keysight.com/find/i3070patches to check for any software patches and install them.</p> |
| 5 | <p>Copy needed files:</p> <ol style="list-style-type: none"> Open a KornShell window. Execute <code>setupEnv.ksh</code>. (This will copy four files to the <code>\$HOME</code> folder. This step creates the user account and home env.) Close the KornShell window. |

Completing the software installation (continued)

Task	Steps
6 Complete the license installation:	<ul style="list-style-type: none">▪ To install the node-locked licenses on a testhead controller or test development workstation, see Installing node-locked licenses on page 13.▪ To allow access to optional feature licenses (which are floating licenses), see Setting up client machines to use floating licenses on page 16.
7 To run the i3070 software when Windows Firewall is enabled:	<p>To allow the i3070 software to run when Windows Firewall is enabled, run the following script, which creates inbound rules for the required ports and TCP/IP addresses.</p> <ul style="list-style-type: none">▪ Default ports enabled: 1337, 3071, 9090, 5672, 31883, 40100, 40102, 50100, 50102, 7030.▪ Default IP addresses enabled: 10.3.112.1 to 10.3.112.255, 0.0.0.0, 192.168.1.1, 255.255.255.255. <p>Go to the <code>C:\i3070_ICT\util</code> folder, right-click <code>CreateFirewallRule.bat</code> and select Run as administrator.</p>

Installing Software Licenses

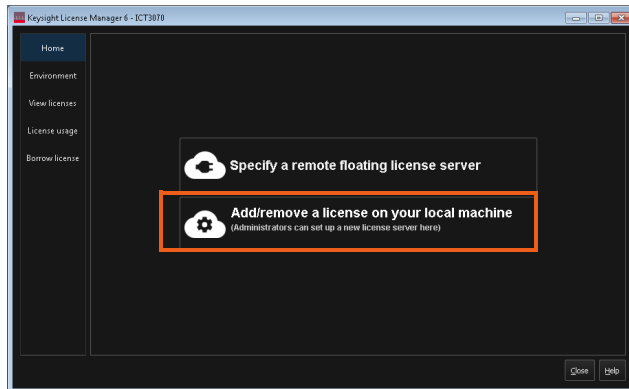
- Installing node-locked licenses
- Setting up client machines to use floating licenses

Installing node-locked licenses

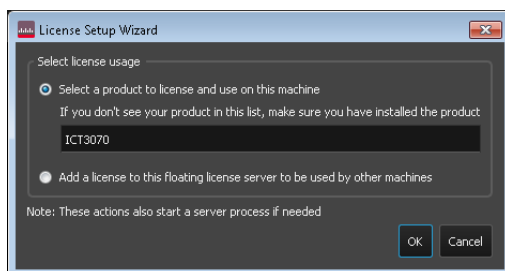
Run Keysight License Manager 6 to add the node-locked licenses on:

- a testhead controller, or
- a test development workstation.

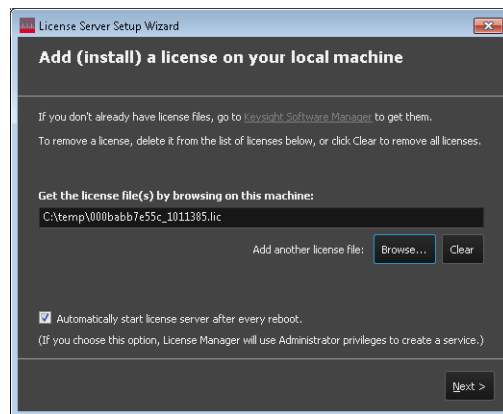
- 1 Launch Keysight License Manager 6 (**Start > Keysight License Manager 6 > Keysight License Manager 6**).
- 2 Click **Add/remove a license on your local machine**.



- 3 Select the product to license (**ICT3070**) and click **OK**.



- 4 Click **Browse** to locate and select the license file(s) that you saved earlier.



- 5 Click **Next** to complete the license setup.
- 6 Go to the `C:\i3070_ICT\util` folder. Right-click `licenseSearchPathReg.bat` and select **Run as administrator**. This will ensure that the license search path setup is consistent for all ICT3070 user accounts.

You can now run the i3070 software on:

- Testhead controller
- Test development workstation issued with node-locked licenses.

Proceed with the license server setup if you have floating licenses to install for optional test features and test development workstations. For instructions, see the “Single/Triple-Redundant Network License Server Setup Guide”.

View licenses

Once the licenses are successfully installed, you can view them from the **View licenses** tab. The following shows examples for a testhead controller and test development workstation.

The image displays two screenshots of the Keysight License Manager 6 application. The top screenshot shows the 'View licenses' tab selected in the left-hand navigation menu. The main area displays a table of licenses for a testhead controller environment.

Feature	Server	Version	Count	Type	Expires
20_Mhz_System_Modifier	(none)	2020.03	uncounted	node-locked	permanent
Software_Update_TestHead	(none)	2020.04	uncounted	node-locked	permanent
i3070Mux_System_TestHead	(none)	2020.03	uncounted	node-locked	permanent

The bottom screenshot shows the 'View licenses' tab selected in the left-hand navigation menu. The main area displays a table of licenses for a test development workstation environment.

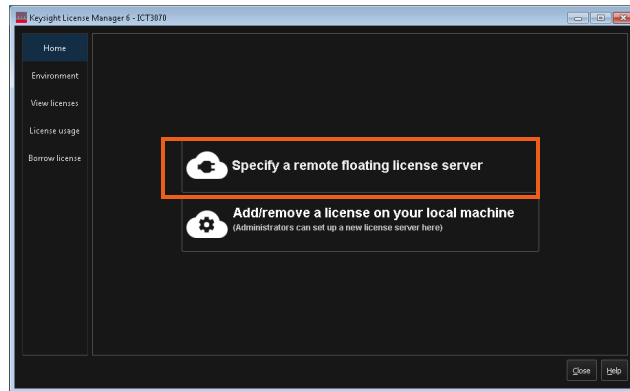
Feature	Server	Version	Count	Type	Expires
Software_Update_TestDev	(none)	2020.04	uncounted	node-locked	4/16/2020
i3070Mux_TestDev	(none)	2020.03	uncounted	node-locked	permanent

Both screenshots show a sidebar with navigation options: Home, Environment, View licenses (highlighted), License usage, and Borrow license. The bottom screenshot also includes a 'Sort By Server' checkbox and a 'NOTE: You may have licenses installed from a previous version of Keysight Licensing. In order to view those licenses, you will need to launch the previous version of the License Manager. See [the Help for details.](#)' at the bottom. Buttons for 'Refresh', 'Close', and 'Help' are visible in the bottom right corner of the bottom screenshot.

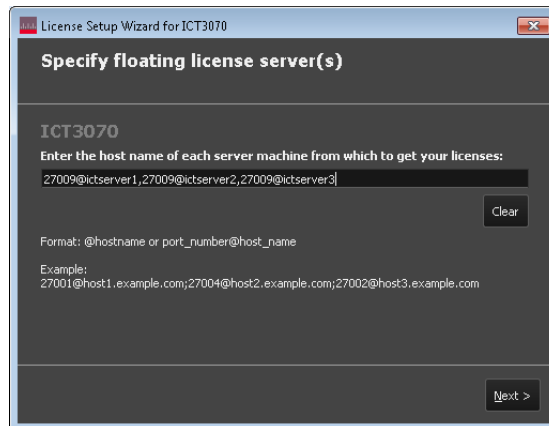
Setting up client machines to use floating licenses

Follow these steps to enable the test development workstations (client machines) to make use of floating licenses. You will need the hostname(s) of the license server(s) where the floating licenses reside.

- 1 On the test development workstation, launch Keysight License Manager 6 (Start > Keysight License Manager 6 > Keysight License Manager 6).
- 2 Click **Specify a remote floating license server**.



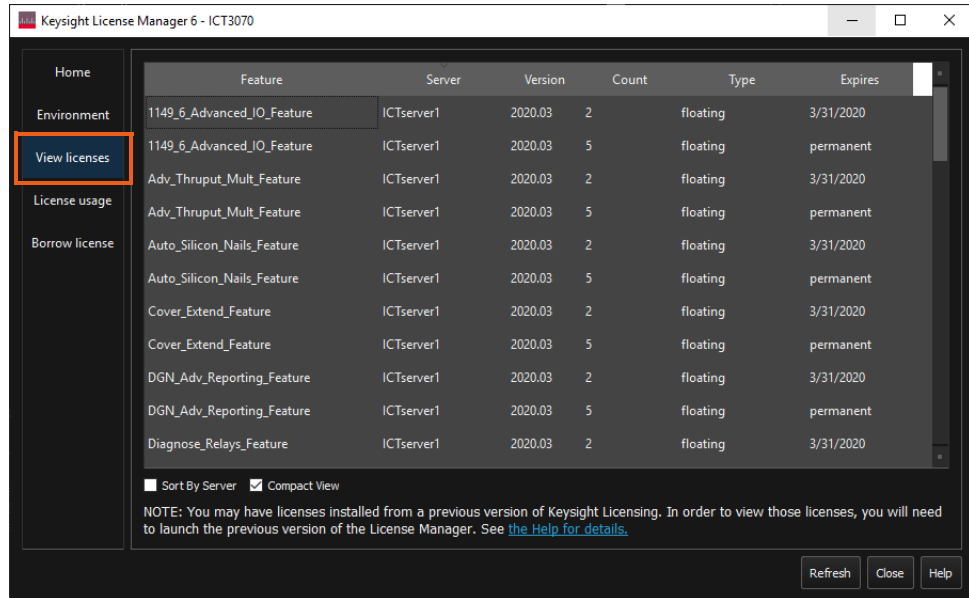
- 3 Enter the hostname of the floating license server. If your system relies on a triple redundant server setup, enter the hostnames of the three license servers, separated by commas. The three servers should be in the same order as specified in the license files.



- 4 Click **Next** to complete the license setup.
- 5 Go to the `C:\I3070_ICT\util` folder. Right-click `licenseSearchPathReg.bat` and select **Run as administrator**. This will ensure that the license search path setup is consistent for all ICT3070 user accounts.

View licenses

Once the licenses are successfully set up, you can view them from the **View licenses** tab. This also shows their expiry dates.



Keysight License Manager 6 - ICT3070

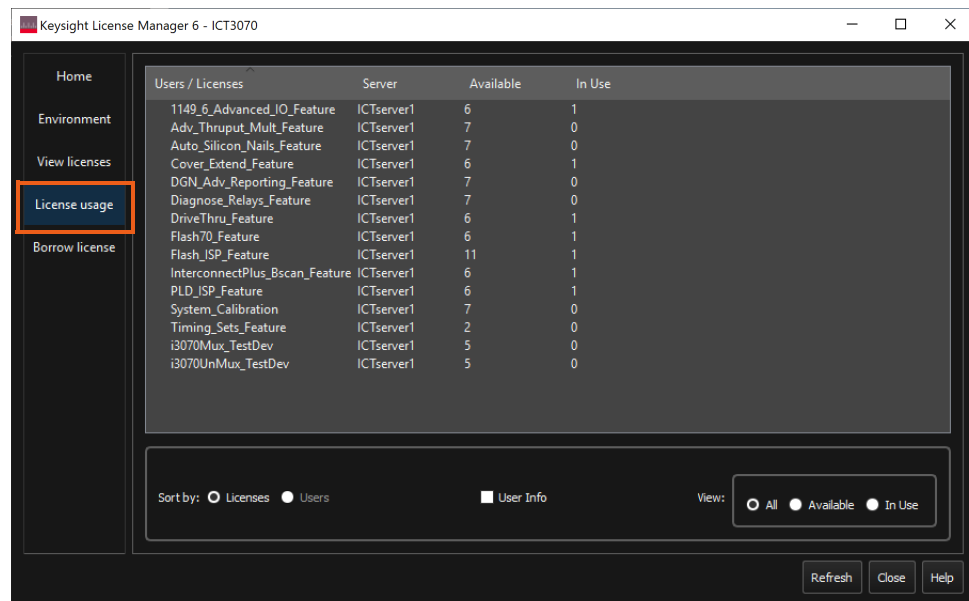
Feature	Server	Version	Count	Type	Expires
1149_6_Advanced_IO_Feature	ICTserver1	2020.03	2	floating	3/31/2020
1149_6_Advanced_IO_Feature	ICTserver1	2020.03	5	floating	permanent
Adv_Thruput_Mult_Feature	ICTserver1	2020.03	2	floating	3/31/2020
Adv_Thruput_Mult_Feature	ICTserver1	2020.03	5	floating	permanent
Auto_Silicon_Nails_Feature	ICTserver1	2020.03	2	floating	3/31/2020
Auto_Silicon_Nails_Feature	ICTserver1	2020.03	5	floating	permanent
Cover_Extend_Feature	ICTserver1	2020.03	2	floating	3/31/2020
Cover_Extend_Feature	ICTserver1	2020.03	5	floating	permanent
DGN_Adv_Reporting_Feature	ICTserver1	2020.03	2	floating	3/31/2020
DGN_Adv_Reporting_Feature	ICTserver1	2020.03	5	floating	permanent
Diagnose_Relays_Feature	ICTserver1	2020.03	2	floating	3/31/2020

Sort By Server Compact View

NOTE: You may have licenses installed from a previous version of Keysight Licensing. In order to view those licenses, you will need to launch the previous version of the License Manager. See [the Help for details](#).

Refresh Close Help

For the number of floating licenses that are available or in use, see **License usage**.



Keysight License Manager 6 - ICT3070

Users / Licenses	Server	Available	In Use
1149_6_Advanced_IO_Feature	ICTserver1	6	1
Adv_Thruput_Mult_Feature	ICTserver1	7	0
Auto_Silicon_Nails_Feature	ICTserver1	7	0
Cover_Extend_Feature	ICTserver1	6	1
DGN_Adv_Reporting_Feature	ICTserver1	7	0
Diagnose_Relays_Feature	ICTserver1	7	0
DriveThru_Feature	ICTserver1	6	1
Flash70_Feature	ICTserver1	6	1
Flash_ISP_Feature	ICTserver1	11	1
InterconnectPlus_Bscan_Feature	ICTserver1	6	1
PLD_ISP_Feature	ICTserver1	6	1
System_Calibration	ICTserver1	7	0
Timing_Sets_Feature	ICTserver1	2	0
i3070Mux_TestDev	ICTserver1	5	0
i3070UnMux_TestDev	ICTserver1	5	0

Sort by: Licenses Users User Info

View: All Available In Use

Refresh Close Help

Verify license installation

- 1 Open a Korn Shell window and type `licenseValidation.ksh`. The tester type and enabled features will be displayed. This also shows the support subscription dates.

```
MKS KornShell - C:/i3070_JCT/bin
$ licenseValidation.ksh
Software Version Date       : 2019.0601
Software Support Expiration Date : 2020.0416
-----
Feature:                    Expiration_Date:    Days Remain:
i3070Mux_System_TestHead   None                Permanent
-----
Feature:                    Expiration_Date:    Days Remain:
20_Mhz_System_Modifier     None                Permanent
-----
Feature:                    Expiration_Date:    Days Remain:
Software_Update_TestHead   None                Permanent
-----
Tester Type:
  20 Mhz (High-Accuracy) Combinational
Features Enabled:
Simple Express Fixturing..... x   Off:
incircuit test..... x
boundary-scan..... x
Advanced Boundary-Scan..... x
Advanced I/O Boundary-Scan..... x
PanelTest..... x
Throughput Multiplier..... x
Vectorless Test EP..... x
Polarity Check..... x
DriveThru..... x
Flash..... x
Advanced Fixturing..... x
Silicon Nails..... x
Cover-Extend..... x
Flash ISP..... x
PLD ISP..... x
Diagnose Relays..... x
System Calibration..... x
DGN Adv Reporting..... x
External Application DLL..... x
Program ASRU..... x
Hybrid Std Adv Mix..... x
Advanced Throughput Multiplier..... x

Note: Some features may require additional enabling
statements in the local 'config' file.
```

- 2 Check that the registry value for `ICT3070_LICENSE_FILE` is the same in:
 - `HKEY_CURRENT_USER\Software\Keysight\EEsof License Configuration`, and
 - `HKEY_LOCAL_MACHINE\Software\Wow6432Node\Keysight\EEsof License Configuration`
- 3 Check that the registry value for `ICT3070_LICENSE_FILE` contains the default license path
`C:\ProgramData\Keysight\Licensing\Licenses\Other;`
`C:\ProgramData\Keysight\Licensing\Licenses\Server;`
and any added floating license server path, if applicable

Other Tasks

- Copying user data
- Installing the online help
- System backup and recovery

Copying user data

If you are upgrading a test development station, you can copy your user data from the old workstation. Do not copy the license files.

- From release 10.00p, the default installation folder for the i3070 In-Circuit Test Software is *C:\I3070_ICT*.
- Copy your data from the old workstation (*C:\I3070_ICT* or *C:\Agilent_ICT*) to corresponding subfolders in *C:\I3070_ICT* on the new workstation.

If your board data is not in the default `boards` folder (*C:\I3070_ICT\boards*), follow the procedure below to change ownership of the board directory.

Changing ownership of the boards directory

If you change the location of the default `boards` directory, follow the instructions below to change the ownership of your custom directory. Otherwise, error messages may appear.

To change the ownership of the *boards* directory:

- 1 In Windows Explorer, right-click the *boards* directory and select **Properties**.
- 2 In the boards Properties dialog box, click the **Security** tab.
- 3 In the Security tab, click **Edit**.
- 4 In the Permissions dialog box, click **Add**.
- 5 Under **Enter the object names to select**, type `Everyone` and click **OK**.
The group **Everyone** is added to the **Group or user names** list in the Permissions dialog box.
- 6 Under **Group or user names**, select **Everyone**.
- 7 In the **Allow** column, select the **Full Control** check box.
- 8 Click **OK** to save the changes.

Installing the online help

Task	Steps
1 Insert the Keysight installation disk into the drive. It should auto-start.	Click Install Keysight i3070 Help to install the online help.
If the installation does not auto-start after several seconds:	<ul style="list-style-type: none">a Open Windows Explorer and browse to the disc.b Double-click <i>setup.exe</i> in the <i>W10\Help</i> folder.
2 Close any open windows and log out.	

System backup and recovery

Use a disk imaging application to create a custom recovery image of your test development workstation that includes changes and updates to the system since it was first installed.

It is the responsibility of the customer to create a full backup of the files on their i3070 ICT systems so that the system and data can be recovered in case of a disaster such as a disk crash. It is recommended that you set up a backup schedule and procedure to create regular backups.

IN NO EVENT WILL KEYSIGHT OR ITS SUPPLIERS BE LIABLE FOR LOSS OF DATA OR FOR DIRECT, SPECIAL, INCIDENTAL, CONSEQUENTIAL (INCLUDING LOST PROFIT OR DATA), OR OTHER DAMAGE WHETHER BASED IN CONTRACT, TORT, OR OTHERWISE.

Troubleshooting Software Installation

If you encounter problems after software installation and find that you are unable to uninstall or reinstall the i3070 In-Circuit Test Software, follow the instructions below. These steps will not remove all i3070 files from your system, but will clean up the system sufficiently to enable you to reinstall the software.

- 1 If there are any i3070 programs running, you must stop them.
 - a Press **Ctrl+Alt+Delete** and select **Start Task Manager**.
 - b On the **Processes** tab, check whether any of the following programs are running:
 - *rmiregistry.exe*
 - *RmiServer.exe*
 - *translogd.exe*
 - *xinitcolorcells.exe*
 - c Select each program that is running and click **End Process**.
- 2 Rename your existing i3070 installation folder.
- 3 Remove the i3070 uninstall key from the registry.
 - a Select **Start > Run**, type `regedit` and click **OK**.
 - b Navigate to the following:
64-bit OS: `HKEY_LOCAL_MACHINE\SOFTWARE\WOW6432Node\Microsoft\Windows\CurrentVersion\Uninstall`.
 - c Look for the key whose Product Name in the right panel shows **Keysight i3070**.
 - d Delete that key.
- 4 Remove the i3070 configuration information from the registry. Look for `HKEY_LOCAL_MACHINE\SOFTWARE\Keysight Technologies, Inc`. If you find this key delete it.

At this point there will still be some i3070 icons and programs on your system. However, you should now be able to successfully reinstall the i3070 In-Circuit Test Software.

Uninstalling the i3070 In-Circuit Test Software

1 Uninstall the i3070 software from either Settings or Control Panel.

- Click **Start > Settings > Apps & Features**.
Click **Keysight In-circuit Test <xx.xx>p** and click **Modify**.
- or
- From **Control Panel**, click **Programs and Features**.
Click **Keysight In-circuit Test <xx.xx>p** and click **Change**.

NOTE

- **xx.xx** indicates the release that is currently installed.
 - You can click **Uninstall** if you want to remove the i3070 software only. Third party software will not be removed.
-

2 Select one of the options:

- **Remove All** to remove the i3070 In-Circuit Test Software together with associated third party software.

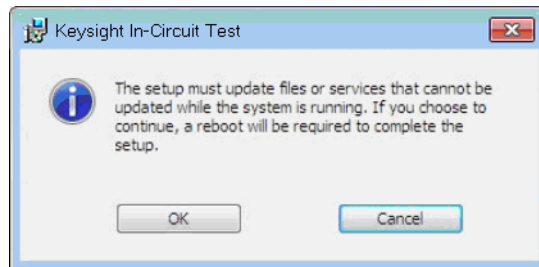
Choose this option if you no longer want the i3070 In-Circuit Test Software on this PC, or when you are upgrading the i3070 In-Circuit Test Software from one release to another.

- Select **Remove** to remove the i3070 In-Circuit Test Software only.
You can choose this option if you want to reinstall the same release.

3 Follow the instructions to complete the uninstallation.

4 If the Keysight LXI Mdns Responder dialog box appears, click **Ignore**.

5 If the following dialog box appears, click **OK** to continue.



6 (Optional) Remove the i3070 online help.

7 Reboot the PC.

NOTE

The uninstall process does not remove the i3070 user accounts.



This information is subject to change
without notice.
© 2021 Keysight Technologies
Edition 1, August 2021



E9901-96022
www.keysight.com