

How to Use M9018A Chassis Manager Firmware Update Utility to Update M9018A firmware:

NOTE: After updating the firmware, you must cycle power on the chassis (not just a controller Restart). If you simply Restart the controller, then the chassis does not re-load the firmware image that you updated.

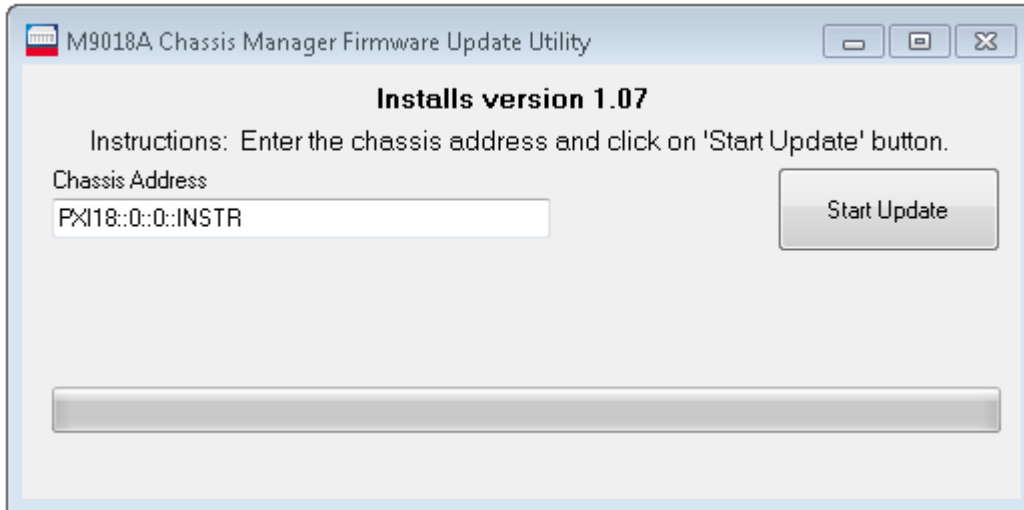
Overview:

- *Use the M9018A driver version 1.5.80.1.*
- *Use M9018A Chassis Manager Firmware Update Utility to update the chassis firmware.*
- *Shutdown controller and cycle power on chassis if using a PCIe cable interface.*
- *Restart and use M9018 SFP to verify firmware version 1.07 is now installed (Help>About).*
- *Verify that the PCIe fabric is correct and that Self Test has no errors.*

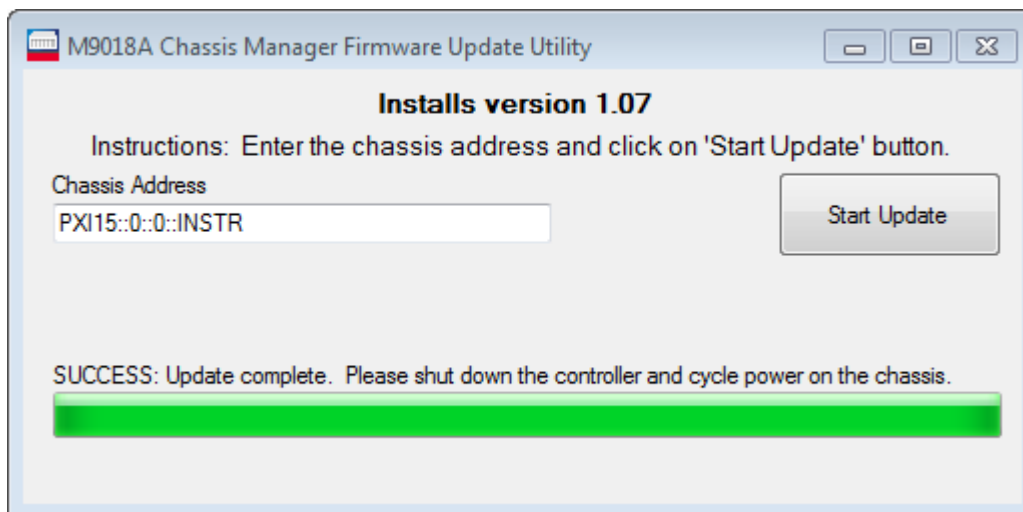
The update tool, **M9018A Chassis Manager Firmware Update Utility.exe**, may be used on both 32 bit and 64 bit OS's:

Performing the Update:

1. Install M9018A driver version **1.5.80.1** and reboot. Note: if you have a later version of the driver installed, you must first uninstall it before installing 1.5.80.1. The 1.5.80.1 version of the driver can be found at www.Keysight.com in the M9018A previous versions tab.
2. Run (double click on) the file: **M9018A Chassis Manager Firmware Update Utility.exe**
3. Enter the Visa address of the chassis. This may be obtained by using Keysight Connection Expert.
4. Click on the 'Start Update' button to load firmware version 1.07 into the chassis. The program downloads the new firmware from companion file M9018_0x17.fw into the chassis. This file must reside in the same folder as the **M9018A Chassis Manager Firmware Update Utility.exe**



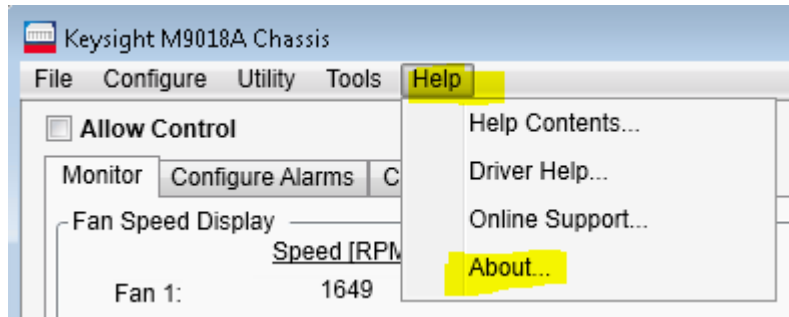
- At completion you will see a SUCCESS note. You may then close the application.



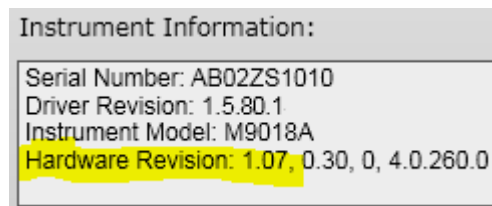
- CYCLE POWER ON CHASSIS.

Perform a Shutdown on the controller, and if using a PCIe cable interface then cycle power on the chassis.

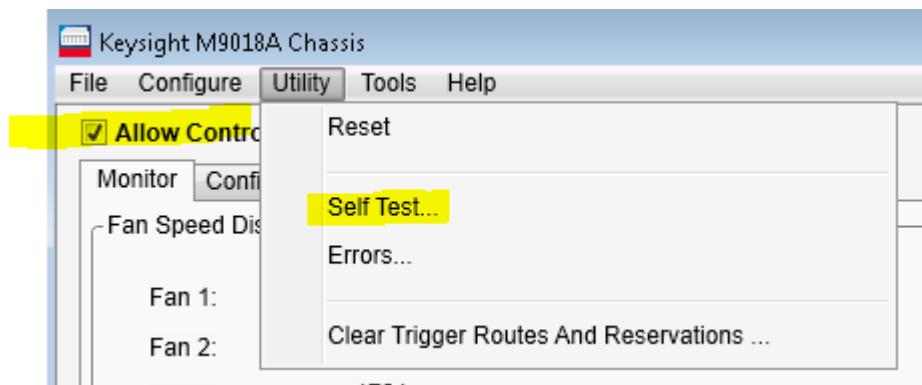
- Once you restart the system:
 - From the M9018 Soft Front Panel, select the Help->About menu choice.



In the resulting dialog box, check the first field in the “Hardware Revision” entry to verify it is now 1.07.



- Run the Soft Front Panel’s Self Test and verify there are no failures. To run Self Test, you must first select “Allow Control”, and then select Utility -> Self Test from the menu. If the firmware update was unsuccessful and you ended up running the backup firmware image, Self Test will alert you to this.



Troubleshooting...

If the firmware update failed:

- If firmware update fails,
 - Retry the firmware update, you do not need to cycle power on the chassis to try this – simply close the M9018A Chassis Manager Firmware Update Utility and then run it again.

- A failed firmware update will not permanently disable the chassis as there is a read-only firmware image that will still allow the chassis to boot, and will support later attempts to update a new firmware image into the chassis.
- Verify that you are using M9018A driver version 1.5.80.1. The update tool only works with M9018A driver version 1.5.80.1. The M9018A firmware version 1.07 works with all versions of the M9018A driver.