

U2040 XA-Series Power Sensor Firmware Upgrade Process

Updated March 2018

Hardware/Software Requirements

- The current hardware requirements for this firmware upgrade are:
 - (a) A PC running Windows 2000®, Windows XP® or Windows 7®
 - (b) An USB 2.0 interface (or LAN connection for U2049XA).
- The current software requirements for this firmware upgrade are:
 - (a) A VISA library (e.g. Agilent IO Libraries).
 - (b) The U2040 XA-Series Firmware Files for your power sensor.
 - (c) The U2040 XA-Series Firmware Upgrade Application (FwUpdateApp.exe).

Note: This procedure has not been tested on other versions of Windows.

Obtaining The Software

- The latest version of the Keysight IO Libraries can be obtained from the following link:
[Keysight IO Libraries](#)
- The U2040 XA-Series Firmware Upgrade Application and firmware can be obtained from the following link:
www.keysight.com/find/pm_firmware
- Save the file to PC hard drive
- **Note: This is a WinZip® executable file that must be unpacked before use.**
- The U2040 XA-series Firmware Upgrade Application is included in the WinZip® executable file (“/util/FwUpdateApp.exe”)

Firmware Upgrade Process

Step 1:

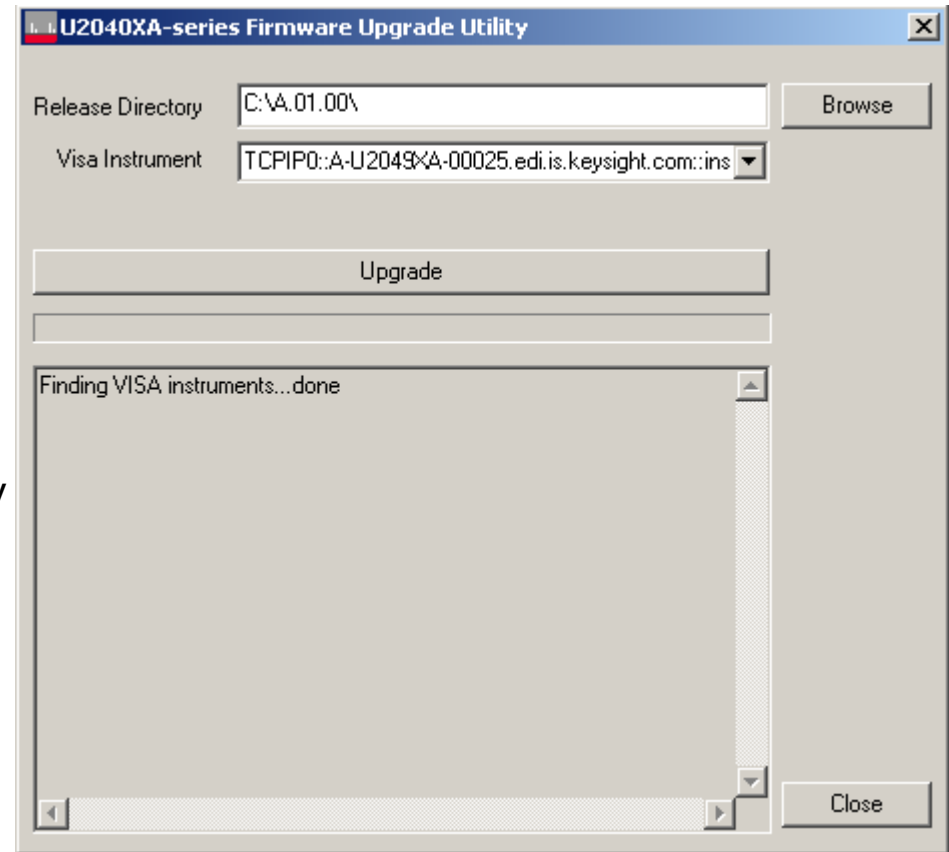
In 'util' folder, run the 'FwUpdateApp.exe' application. This does not need to be installed – simply double-click on the file to run it.

Step 2:

Click on the 'Browse' button next to 'Release Directory', and select the directory in which the firmware files reside.

Step 3:

Click on the drop-down arrow next to 'VISA Instrument', and select the unit to be upgraded.



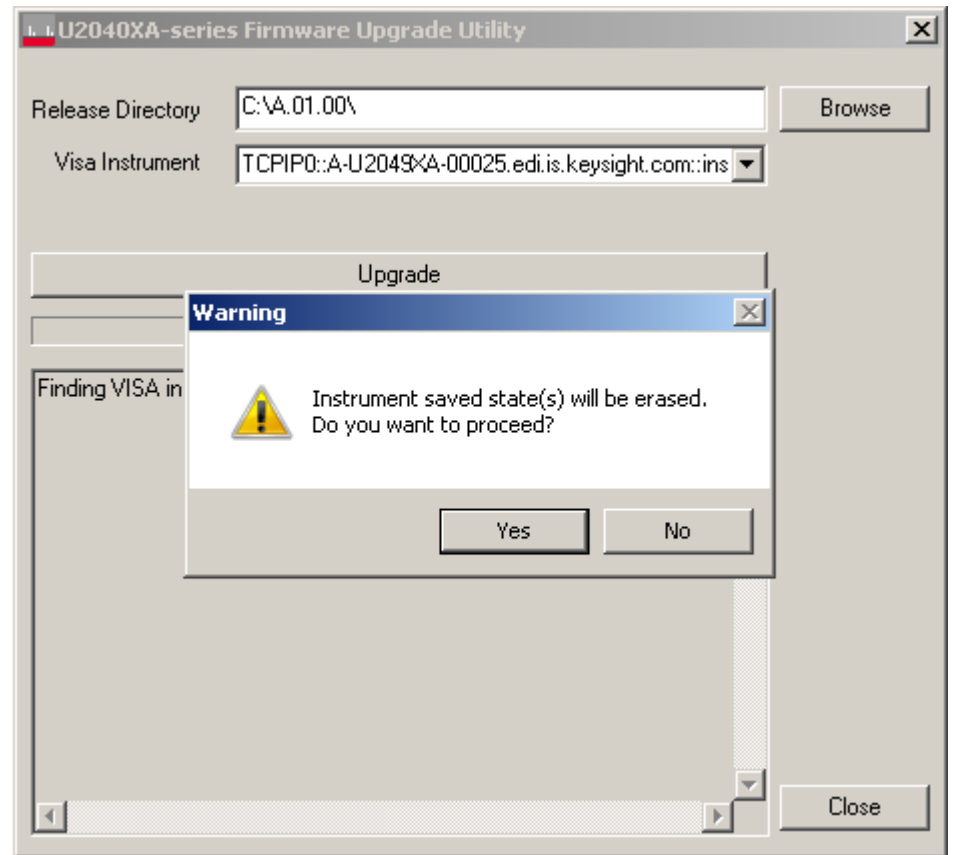
Note: Make sure the U2040 X-Series power sensor is connected to the USB port (or LAN connection for U2049XA) and detected by IO Libraries.

Firmware Upgrade Process

Step 4:

Click on the 'Upgrade' button.

Click 'Yes' on the warning pop-up when asked about instrument saved states.



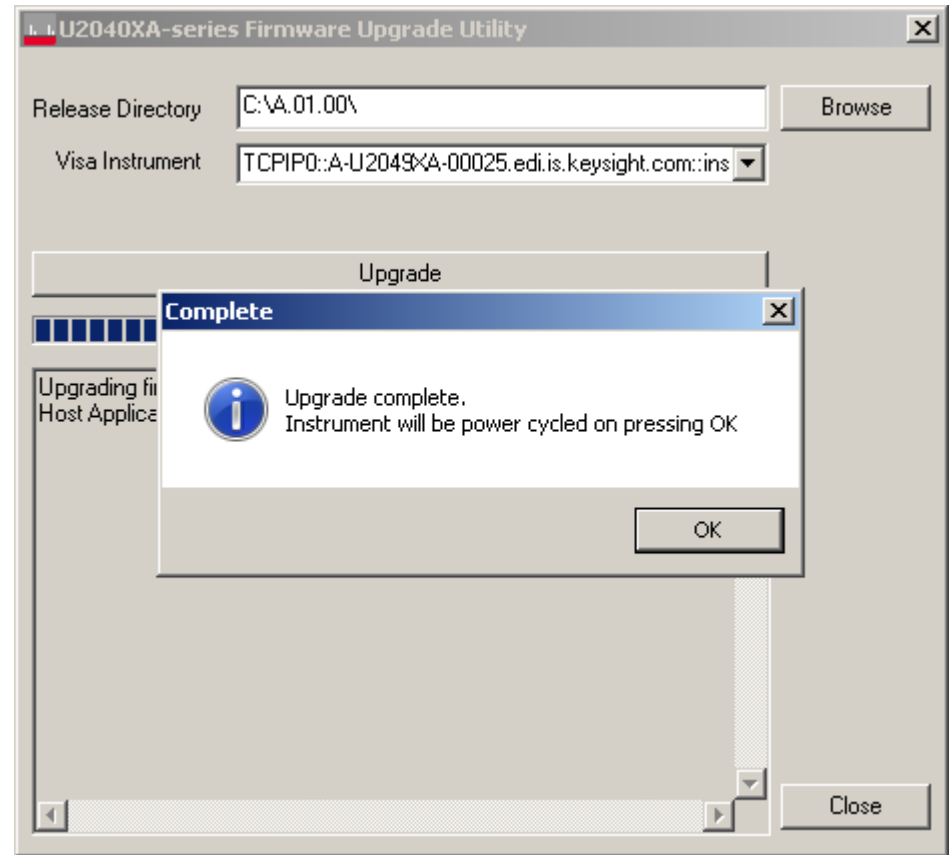
Firmware Upgrade Process

Step 5:

Click 'OK' on the pop-up that appears when the upgrade is complete.

The power sensor will take less than 3 minutes to complete the upgrade.

Now, the power sensor will automatically execute a power cycle.



You have successfully upgrade the new firmware!