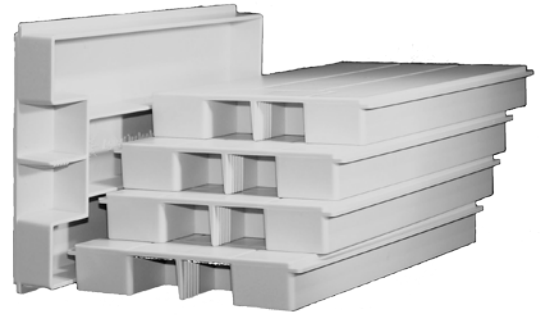


# Keysight Y1212A Slot Blocker Kit Installation Guide

Keysight's M9018A PXIe chassis cooling design uses auto-speed fans to extract hot air from the chassis rather than push cool air into the chassis. This design provides better cooling efficiency in the chassis. The Y1212A Slot Blockers improve air flow through PXI modules by reducing air flow through unused chassis slots and re-routing the air flow through slots with modules. The Y1212A Slot Blocker kit provides five modules.



## General Use Recommendations

Slot Blocker modules should be used in PXI systems with both empty slots and application modules that have high power dissipation or high component density.

Other recommendations:

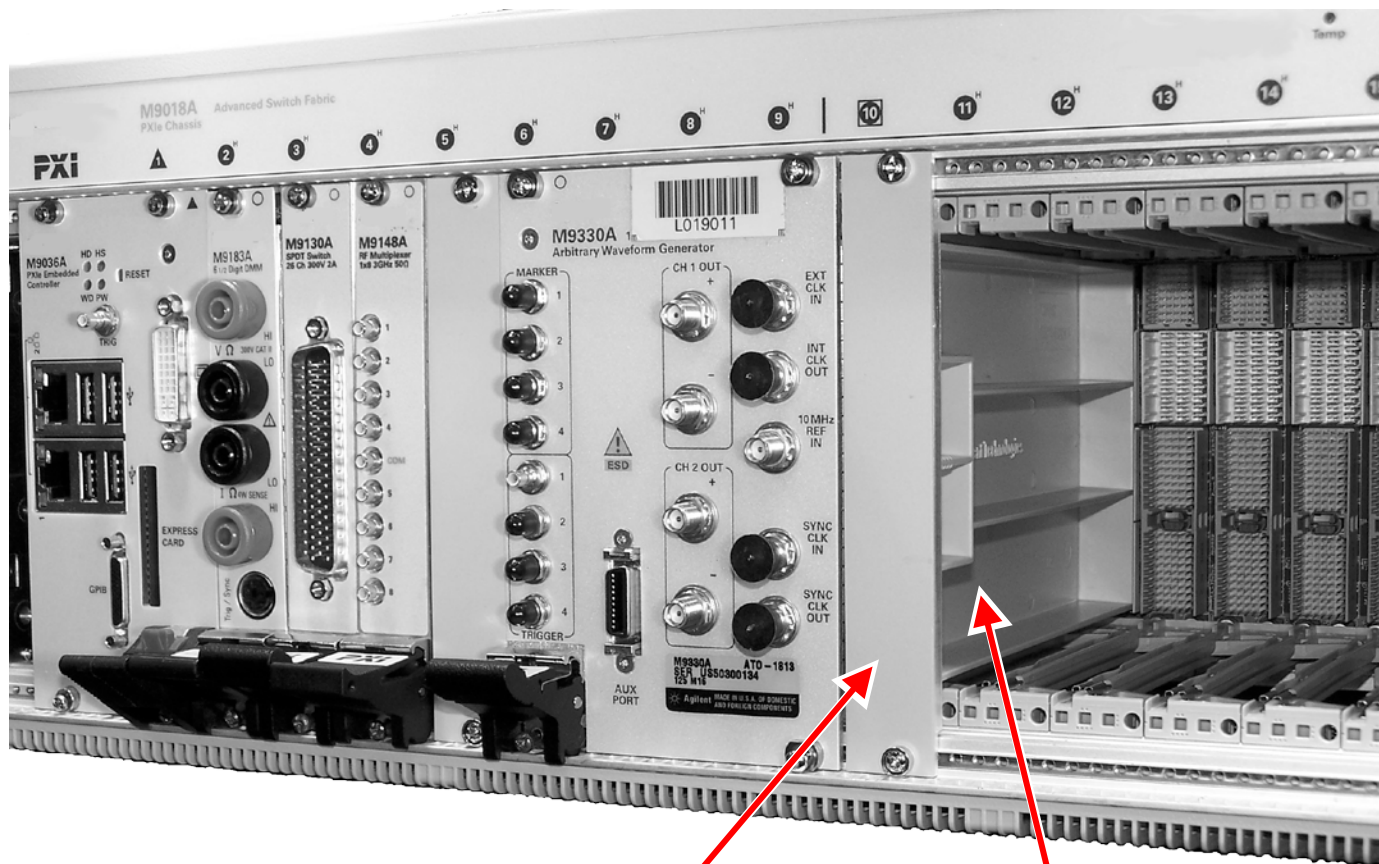
- PXI modules and Slot Blocker modules should be installed in adjacent slots and populate the chassis starting from the left (Slot 1).
- Never block the cooling vents on the front and on the sides of the chassis. This is especially important when rack mounting the chassis.
- Consider using the Y1214A Air Inlet Module kit when the PXI chassis is mounted in a rack and the bottom vents of the PXI chassis are blocked. The Air Inlet Module kit evens out the airflow across the slots in the chassis. The air inlet modules should be installed in the center of the chassis and the Y1212A Slot Blocker modules installed in any unused slots.
- While Keysight can give general recommendations, the overall system design determines how to use the Air Inlet module and Slot Blocker kits to provide optimum cooling in the chassis.

## Installation and Removal

Installation of the Slot Blocker modules is similar to installing any other PXI module. Refer to the photo on the next page.

1. Make sure the PXI chassis power is turned off. Remove any filler panels as needed.
2. Holding the Slot Blocker module vertical, slide it into the appropriate chassis slot.
  - Install the module into the PXI slot of the chassis by placing the module card edges into the front module guides (top and bottom).
  - Slide the Slot Blocker module completely into the chassis.
3. Install a filler panel over the Slot Blocker module. Secure the filler panel to the chassis using the retaining screws.
4. Plug in and power up the PXI chassis. Verify that the chassis fans are operating and free of obstructions that may restrict airflow.

**Note:** All unused slots in the PXI chassis should be covered with a filler panel. Filler panels are not supplied with the Y1212A Slot Blocker Kit but a complete set is included with the M9018A chassis. A kit of five single slot EMC Filler Panels is also available as accessory number Y1213A.



Always place a filler panel over each slot blocker module

Slot blocker module installed in chassis