
U8903B

Performance Audio Analyzer

Notices

Copyright Notice

© Keysight Technologies 2014–2015, 2023, 2024

No part of this manual may be reproduced in any form or by any means (including electronic storage and retrieval or translation into a foreign language) without prior agreement and written consent from Keysight Technologies as governed by United States and international copyright laws.

Trademark

Bluetooth and the *Bluetooth* logos are trademarks owned by Bluetooth SIG, Inc., U.S.A. and licensed to Keysight Technologies.

Manual Part Number

U8903-90049

Edition

Edition 4, January 2024

Printed in:

Printed in Malaysia

Published by:

Keysight Technologies
Bayan Lepas Free Industrial Zone,
11900 Penang, Malaysia

Technology Licenses

The hardware and/or software described in this document are furnished under a license and may be used or copied only in accordance with the terms of such license.

Declaration of Conformity

Declarations of Conformity for this product and for other Keysight products may be downloaded from the Web. Go to <http://www.keysight.com/go/conformity>. You can then search by product number to find the latest Declaration of Conformity.

U.S. Government Rights

The Software is “commercial computer software,” as defined by Federal Acquisition Regulation (“FAR”) 2.101. Pursuant to FAR 12.212 and 27.405-3 and Department of Defense FAR Supplement (“DFARS”) 227.7202, the U.S. government acquires commercial computer software under the same terms by which the software is customarily provided to the public. Accordingly, Keysight provides the Software to U.S. government customers under its standard commercial license, which is embodied in its End User License Agreement (EULA), a copy of which can be found at <http://www.keysight.com/find/sweula>. The license set forth in the EULA represents the exclusive authority by which the U.S. government may use, modify, distribute, or disclose the Software. The EULA and the license set forth therein, does not require or permit, among other things, that Keysight: (1) Furnish technical information related to commercial computer software or commercial computer software documentation that is not customarily provided to the public; or (2) Relinquish to, or otherwise provide, the government rights in excess of these rights customarily provided to the public to use, modify, reproduce, release, perform, display, or disclose commercial computer software or commercial computer software documentation. No additional government requirements beyond those set forth in the EULA shall apply, except to the extent that those terms, rights, or licenses are explicitly required from all providers of commercial computer software pursuant to the FAR and the DFARS and are set forth specifically in writing elsewhere in the EULA. Keysight shall be under no obligation to update, revise or otherwise modify the Software. With respect to any technical data as defined by FAR 2.101, pursuant to FAR 12.211 and 27.404.2 and DFARS 227.7102, the U.S. government acquires no greater than Limited Rights as defined in FAR 27.401 or DFAR 227.7103-5 (c), as applicable in any technical data.

Warranty

THE MATERIAL CONTAINED IN THIS DOCUMENT IS PROVIDED “AS IS,” AND IS SUBJECT TO BEING CHANGED, WITHOUT NOTICE, IN FUTURE EDITIONS. FURTHER, TO THE MAXIMUM EXTENT PERMITTED BY APPLICABLE LAW, KEYSIGHT DISCLAIMS ALL WARRANTIES, EITHER EXPRESS OR IMPLIED, WITH REGARD TO THIS MANUAL AND ANY INFORMATION CONTAINED HEREIN, INCLUDING BUT NOT LIMITED TO THE IMPLIED WARRANTIES OF MERCHANTABILITY AND FITNESS FOR A PARTICULAR PURPOSE. KEYSIGHT SHALL NOT BE LIABLE FOR ERRORS OR FOR INCIDENTAL OR CONSEQUENTIAL DAMAGES IN CONNECTION WITH THE FURNISHING, USE, OR PERFORMANCE OF THIS DOCUMENT OR FOR ANY INFORMATION CONTAINED HEREIN. SHOULD KEYSIGHT AND THE USER HAVE A SEPARATE WRITTEN AGREEMENT WITH WARRANTY TERMS COVERING THE MATERIAL IN THIS DOCUMENT THAT CONFLICT WITH THESE TERMS, THE WARRANTY TERMS IN THE SEPARATE AGREEMENT SHALL CONTROL.

Safety Information

CAUTION

A CAUTION notice denotes a hazard. It calls attention to an operating procedure, practice, or the like that, if not correctly performed or adhered to, could result in damage to the product or loss of important data. Do not proceed beyond a CAUTION notice until the indicated conditions are fully understood and met.

WARNING

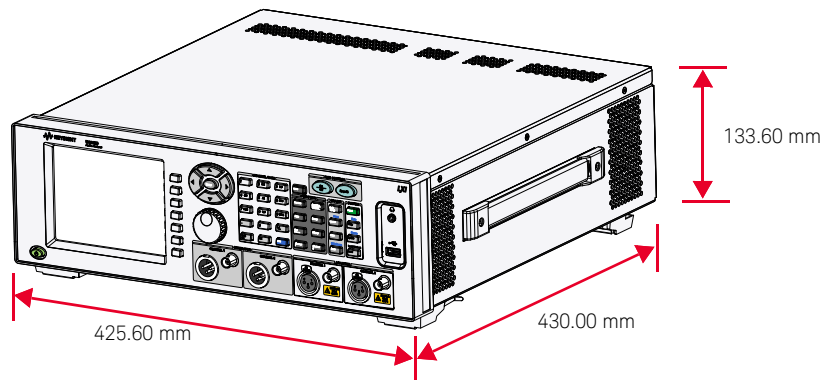
A WARNING notice denotes a hazard. It calls attention to an operating procedure, practice, or the like that, if not correctly performed or adhered to, could result in personal injury or death. Do not proceed beyond a WARNING notice until the indicated conditions are fully understood and met.

Table of Contents

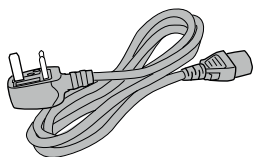
- Standard Shipped Items5
- Product at a Glance6
 - Front panel6
 - Rear panel7
 - LCD display8
- Navigation and CHANNEL/DATA Panels9
- Power On the U8903B10
- Preset the U8903B11
- Access the Help System11
- Access the U8903B Menu12
- Switch to 2-Panel, 4-Panel, or 10-Panel View13
- U8903B Options14

THIS PAGE HAS BEEN INTENTIONALLY LEFT BLANK.

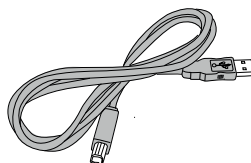
Standard Shipped Items



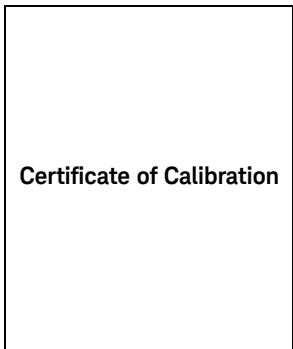
Keysight U8903B Performance Audio Analyzer



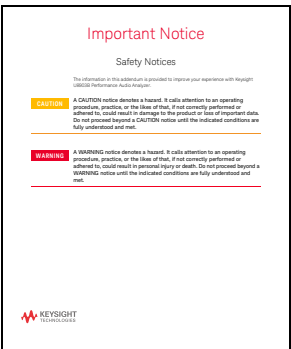
Power cord



USB cable



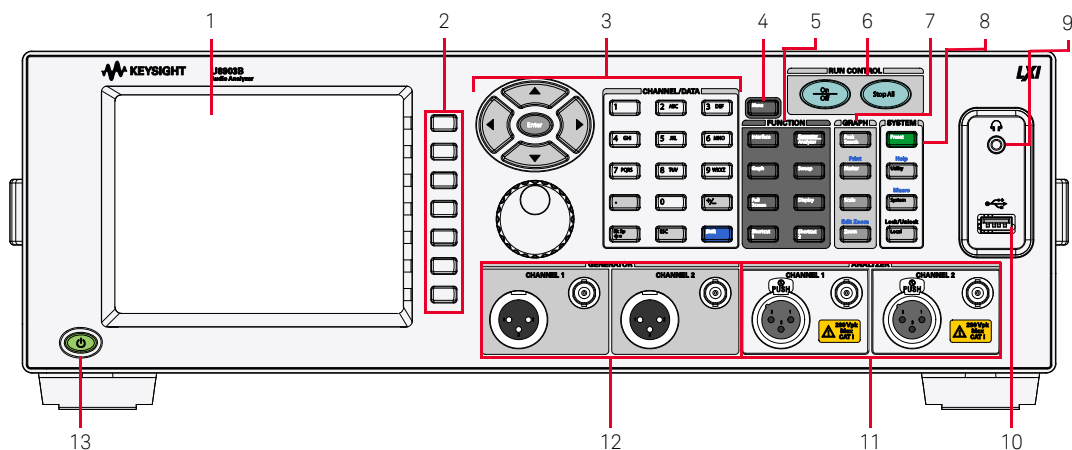
Certificate of Calibration



Safety Notices

Product at a Glance

Front panel

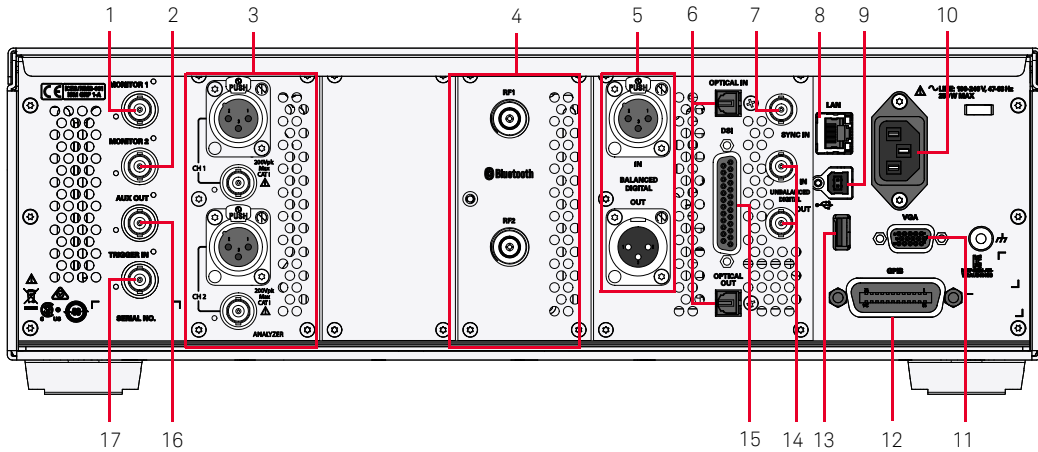


| Item | Item |
|--------------------------------------|----------------------------|
| 1 LCD display | 8 SYSTEM panel |
| 2 Softkeys 1 to 7 | 9 Headphone jack |
| 3 Navigation and CHANNEL/DATA panels | 10 USB port |
| 4 Menu key | 11 Analog analyzer input |
| 5 FUNCTION panel | 12 Analog generator output |
| 6 Run Control panel | 13 Power key |
| 7 GRAPH panel | |

NOTE

For the complete list of all the front panel functions and descriptions, refer to the *Keysight U8903B User's Guide*.

Rear panel



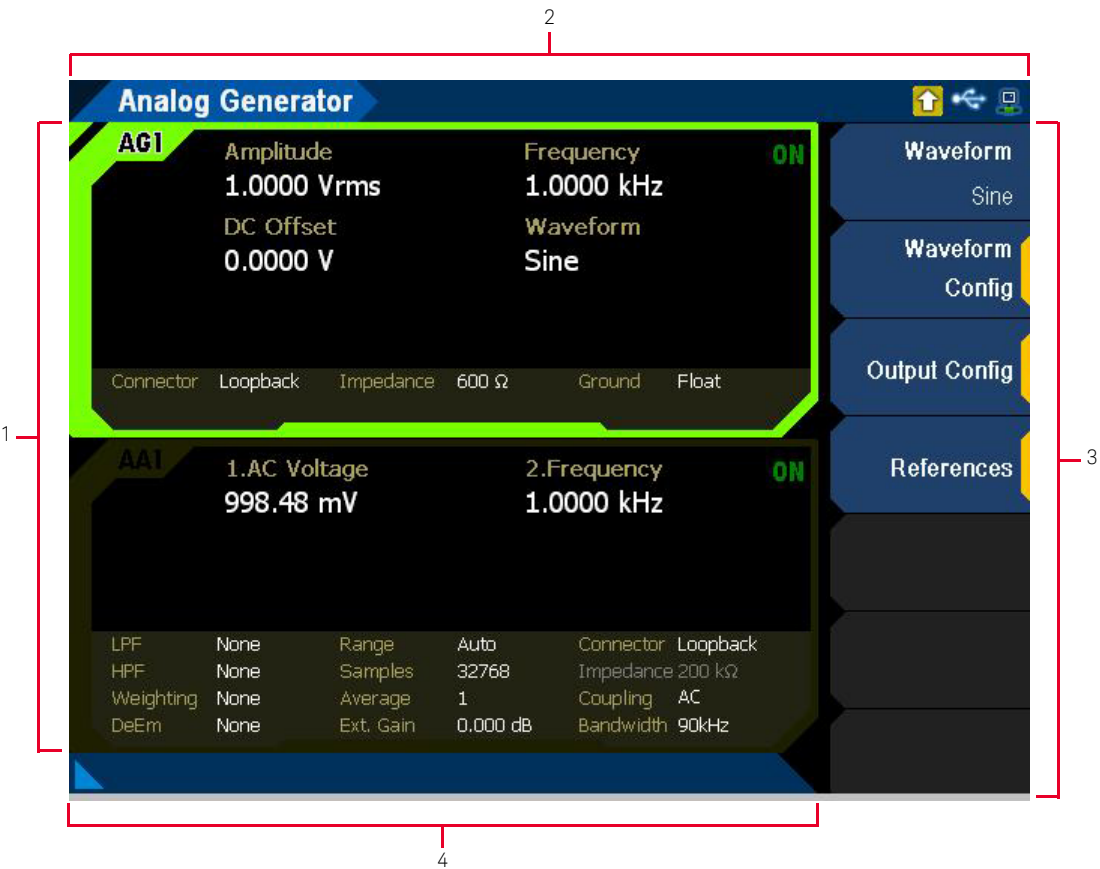
| Item | Item |
|---|---|
| 1 Monitor 1 | 10 AC power port |
| 2 Monitor 2 | 11 VGA port |
| 3 Analog analyzer input (channels 3 and 4) | 12 GPIB port |
| 4 Bluetooth RF ports ^[a] | 13 USB port |
| 5 Digital analyzer input and output (AES3) | 14 Digital analyzer input and output (AES3/SPDIF) |
| 6 Digital analyzer input and output (SPDIF) | 15 Digital analyzer input and output (DSI) |
| 7 Sync in | 16 AUX port |
| 8 LAN port | 17 Trigger in |
| 9 USB port (type B) | |

[a] The RF1 port is the default port and the RF2 port can be selected in the U8903B's GUI. Only one RF port can be used at a time.

NOTE

For the complete list of all the rear panel functions and descriptions, refer to the *Keysight U8903B User's Guide*.

LCD display

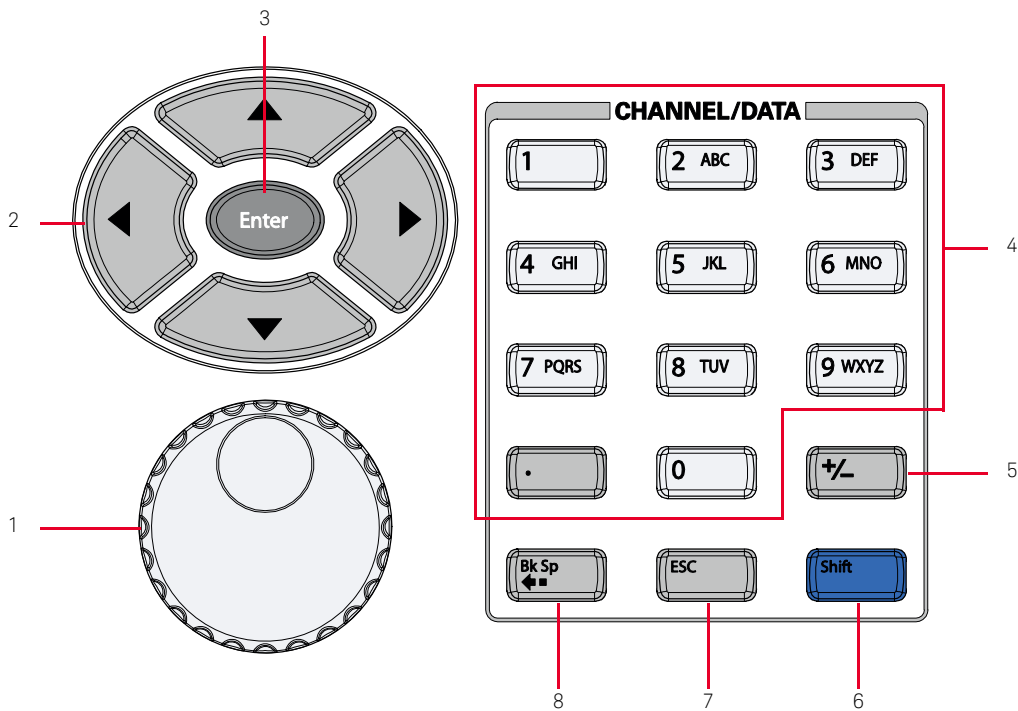


| Item | Item |
|----------------|------------------|
| 1 Main display | 3 Softkeys panel |
| 2 Title bar | 4 Status bar |

NOTE For the complete list of all the LCD display functions and descriptions, refer to the *Keysight U8903B User's Guide*.

Navigation and CHANNEL/DATA Panels

The navigation and CHANNEL/DATA panels are used to navigate and to set or modify the parameter values.

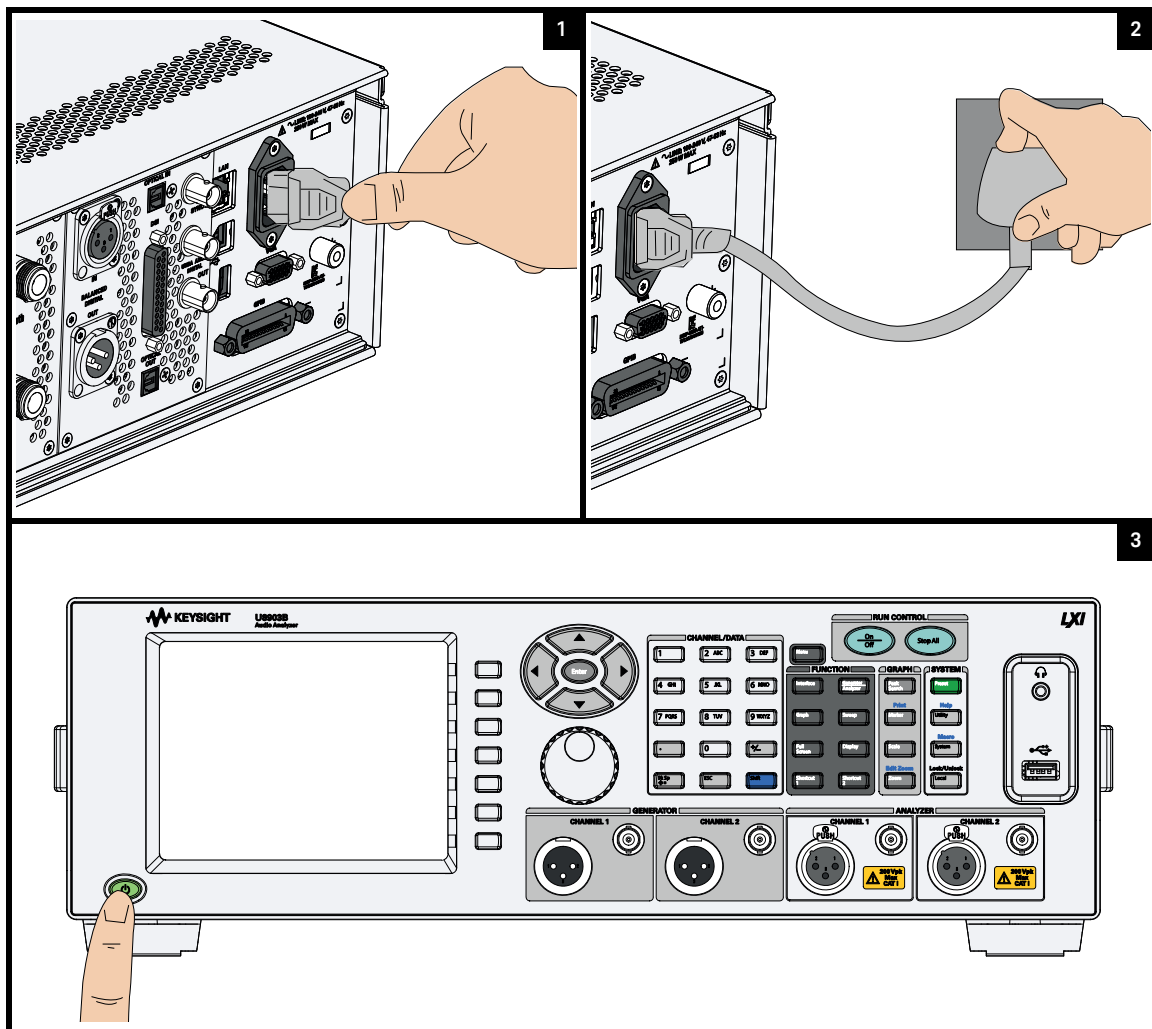


| Item | | Item | |
|------|--------------|------|------------------|
| 1 | Knob | 5 | Numeric sign key |
| 2 | Arrow keys | 6 | Shift key |
| 3 | Enter key | 7 | Escape key |
| 4 | Numeric keys | 8 | Backspace key |

NOTE

For the complete list of all the navigation and CHANNEL/DATA keys functions and descriptions, refer to the *Keysight U8903B User's Guide*.

Power On the U8903B



Preset the U8903B

SYSTEM

Preset

Help

Utility

Macro

System

Lock/Unlock

Local

Press **Preset** to set the U8903B to a known state.

It does not affect the I/O configuration, calibration data, or system configurations (time, date, model number, and serial number).

1

Preset

AG1

Amplitude
1.0000 Vrms
DC Offset
0.0000 V

Frequency
1.0000 kHz
Waveform
Sine

ON

Connector Loopback Impedance 600 Ω Ground Float

AA1

1.AC Voltage
997.85 mV

2.Frequency
1000.0 Hz

ON

LFF None Range Auto Connector Loopback
HFF None Samples 32768 Impedance 200 kΩ
Weighting None Average 1 Coupling AC
DeEm None Ext. Gain 0.000 dB Bandwidth 90kHz

Analog Generator
Save User State
Mode
To Factory Settings
User State
Return

2

Access the Help System

SYSTEM

Preset

Help

Utility

Macro

System

Lock/Unlock

Local

Press **Shift** on the CHANNEL/ DATA panel, and press **Utility** to activate or deactivate the U8903B help mode.

The help mode icon will appear at the top-right of the title bar.

The U8903B help mode provides you quick access to the operating information by displaying the description of all the front panel keys and current softkeys.

1

Analog Generator

AG1

Amplitude
1.0000 Vrms
DC Offset
0.0000 V

Frequency
1.0000 kHz
Waveform
Sine

ON

Connector Loopback Impedance 600 Ω Ground Float

AA1

1.AC Voltage
998.46 mV

2.Frequency
1.0000 kHz

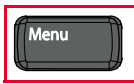
ON

LFF None Range Auto Connector Loopback
HFF None Samples 32768 Impedance 200 kΩ
Weighting None Average 1 Coupling AC
DeEm None Ext. Gain 0.000 dB Bandwidth 90kHz

Waveform
Sine
Waveform
Config
Output Config
References

2

Access the U8903B Menu



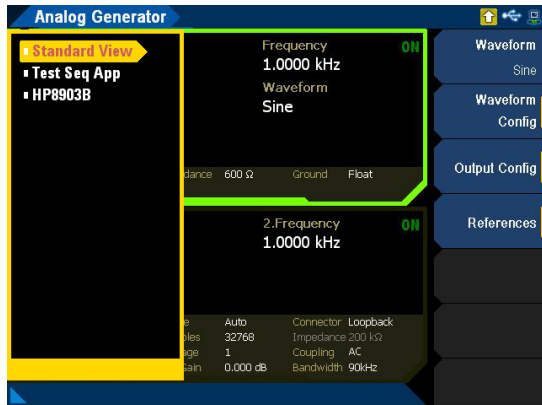
Press **Menu** to display the available U8903B main modes of operation.

Use the arrow keys or knob to select the desired main mode, and press **Enter** on the navigation panel.

1

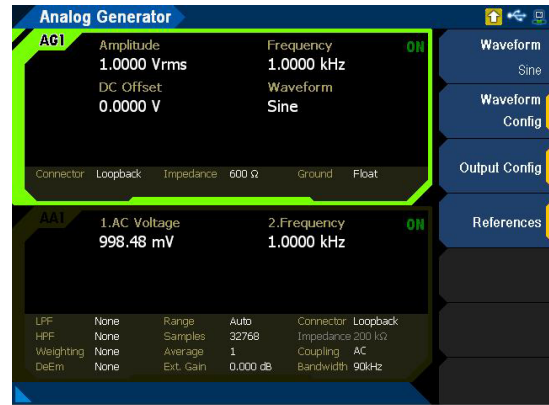
U8903B main mode selection

2



Standard view mode

3



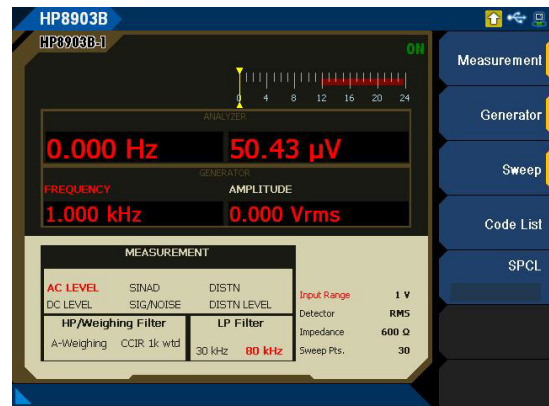
Test sequence application mode

4



HP8903B mode

5



Switch to 2-Panel, 4-Panel, or 10-Panel View

FUNCTION

Interface

Generator Analyzer

Graph

Sweep

Full Screen

Display

Shortcut 1

Shortcut 2

Press **Display** to switch among the 2-panel, 4-panel, or 10-panel view in the generator and analyzer mode.

2-panel view

Analog Generator

AG1

Amplitude
1.0000 Vrms
DC Offset
0.0000 V

Frequency
1.0000 kHz
Waveform
Sine

ON

Connector
Loopback
Impedance
600 Ω
Ground
Float

Waveform

Sine

Waveform Config

Output Config

References

AA1

1.AC Voltage
998.48 mV
2.Frequency
1.0000 kHz

ON

LPF
None
HPF
None
Weighting
None
DeEm
None

Range
Auto
Samples
32768
Average
1
Ext. Gain
0.000 dB

Connector
Loopback
Impedance
200 kΩ
Coupling
AC
Bandwidth
90kHz

4-panel view

Analog Generator

Waveform Config

AG1

Amplitude
1.0000 Vrms
DC Offset
0.0000 V

Frequency
1.0000 kHz
Waveform
Sine

ON

Conn
Loopback
Gnd
Float

Imp
600 Ω

AG2

Amplitude
2.0000 Vrms
DC Offset
0.0000 V

Frequency
2.0000 kHz
Waveform
Sine

ON

Conn
Loopback
Gnd
Float

Imp
600 Ω

AA1

1.AC Voltage
997.85 mV
2.Frequency
1.0000 kHz

ON

LPF
None
HPF
None
W
None
DeEm
None

Conn
Loopback
Imp
200 kΩ
Coup
AC
BW
90kHz

AA2

1.AC Voltage
1.9974 V
2.Frequency
2.0000 kHz

ON

LPF
None
HPF
None
W
None
DeEm
None

Conn
Loopback
Imp
200 kΩ
Coup
AC
BW
90kHz

Amplitude

1.0000 Vrms

Frequency

1.0000 kHz

DC Offset

0.0000 V

Return

10-panel view

Analog Generator

Waveform Config

AG1

Amplitude
1.0000 Vrms
DC Offset
0.0000 V

Frequency
1.0000 kHz
Waveform
Sine

ON

Conn
Loopback
Gnd
Float

Imp
600 Ω

AG2

Amplitude
2.0000 Vrms
DC Offset
0.0000 V

Frequency
2.0000 kHz
Waveform
Sine

ON

Conn
Loopback
Gnd
Float

Imp
600 Ω

AA1

1.AC Voltage
997.85 mV
2.Frequency
1.0000 kHz

ON

LPF
None
HPF
None
W
None
DeEm
None

Conn
Loopback
Imp
200 kΩ
Coup
AC
BW
90kHz

AA2

1.AC Voltage
1.9974 V
2.Frequency
2.0000 kHz

ON

LPF
None
HPF
None
W
None
DeEm
None

Conn
Loopback
Imp
200 kΩ
Coup
AC
BW
90kHz

AA3

1.AC Voltage
1.0002 V
2.Frequency
1.0000 kHz

ON

LPF
None
HPF
None
W
None
DeEm
None

Conn
Loopback
Imp
200 kΩ
Coup
AC
BW
90kHz

AA4

1.AC Voltage
2.0001 V
2.Frequency
2.0000 kHz

ON

LPF
None
HPF
None
W
None
DeEm
None

Conn
Loopback
Imp
200 kΩ
Coup
AC
BW
90kHz

AA5

1.AC Voltage
997.75 mV
2.Frequency
1000.0 Hz

ON

LPF
None
HPF
None
W
None
DeEm
None

Conn
Loopback
Imp
200 kΩ
Coup
AC
BW
90kHz

AA6

1.AC Voltage
2.0006 V
2.Frequency
2.0000 kHz

ON

LPF
None
HPF
None
W
None
DeEm
None

Conn
Loopback
Imp
200 kΩ
Coup
AC
BW
90kHz

AA7

1.AC Voltage
1.0002 V
2.Frequency
1.0000 kHz

ON

LPF
None
HPF
None
W
None
DeEm
None

Conn
Loopback
Imp
200 kΩ
Coup
AC
BW
90kHz

AA8

1.AC Voltage
2.0039 V
2.Frequency
2.0000 kHz

ON

LPF
None
HPF
None
W
None
DeEm
None

Conn
Loopback
Imp
200 kΩ
Coup
AC
BW
90kHz

Amplitude

1.0000 Vrms

Frequency

1.0000 kHz

DC Offset

0.0000 V

Return

U8903B Options

| Option | Description |
|------------|---|
| U8903B-STD | <ul style="list-style-type: none">- 2 channels (analog generator)- 2 channels (analog analyzer) |
| U8903B-AN4 | <ul style="list-style-type: none">- 2 channels (analog generator)- 4 channels (analog analyzer) |
| U8903B-AN8 | <ul style="list-style-type: none">- 2 channels (analog generator)- 8 channels (analog analyzer) |
| U8903B-DGT | Digital audio card |
| U8903B-BLU | <i>Bluetooth</i> card with 2 RF connectors. |
| U8903B-BL2 | <i>Bluetooth</i> card with 2 RF connectors at a secondary option slot. This is only applicable when U8903B-AN8 is selected. |
| N3431A | Wide bandwidth option - 1.5 MHz (fixed perpetual license). This is only available for channel 1 and channel 2 analog analyzer. |
| N3432A | Perceptual Objective Listening Quality Analysis (POLQA) measurement software (fixed perpetual license). |
| N3434A | AES3, SPDIF, and DSI digital audio interfaces (fixed perpetual license). |



This information is subject to change without notice. Always refer to the Keysight Web site for the latest revision.

© Keysight Technologies 2014–2015,
2023, 2024
Edition 4, January 2024

Printed in Malaysia



U8903-90049

www.keysight.com