

Keysight M9290A CXA-m PXIe Signal Analyzer

This manual provides documentation for Keysight M9290A CXA-m PXIe Signal Analyzer running the Microsoft Windows 7 operating system.

Notice: This document contains references to Agilent. Please note that Agilent's Test and Measurement business has become Keysight Technologies. For more information, go to www.keysight.com.

Getting Started
and
Troubleshooting
Guide

Notices

© Keysight Technologies, Inc. 2014

No part of this manual may be reproduced in any form or by any means (including electronic storage and retrieval or translation into a foreign language) without prior agreement and written consent from Keysight Technologies, Inc. as governed by United States and international copyright laws.

Trademark Acknowledgements

Bluetooth® and the Bluetooth Logo® are trademarks owned by Bluetooth SIG, Inc., U.S.A. and licensed to Keysight Technologies, Inc

Manual Part Number

M9290-90007

Print Date

October 2014

Printed in China

Keysight Technologies Inc.
No. 116 Tianfu 4th Street
Chengdu, China 610041

Warranty

THE MATERIAL CONTAINED IN THIS DOCUMENT IS PROVIDED “AS IS,” AND IS SUBJECT TO BEING CHANGED, WITHOUT NOTICE, IN FUTURE EDITIONS. FURTHER, TO THE MAXIMUM EXTENT PERMITTED BY APPLICABLE LAW, KEYSIGHT DISCLAIMS ALL WARRANTIES, EITHER EXPRESS OR IMPLIED WITH REGARD TO THIS MANUAL AND ANY INFORMATION CONTAINED HEREIN, INCLUDING BUT NOT LIMITED TO THE IMPLIED WARRANTIES OF MERCHANTABILITY AND FITNESS FOR A PARTICULAR PURPOSE. KEYSIGHT SHALL NOT BE LIABLE FOR ERRORS OR FOR INCIDENTAL OR CONSEQUENTIAL DAMAGES IN CONNECTION WITH THE FURNISHING, USE, OR PERFORMANCE OF THIS DOCUMENT OR ANY INFORMATION CONTAINED HEREIN. SHOULD KEYSIGHT AND THE USER HAVE A SEPARATE WRITTEN AGREEMENT WITH WARRANTY TERMS COVERING THE MATERIAL IN THIS DOCUMENT THAT CONFLICT WITH THESE TERMS, THE WARRANTY TERMS IN THE SEPARATE AGREEMENT WILL CONTROL.

Technology Licenses

The hardware and/or software described in this document are furnished under a license and may be used or copied only in accordance with the terms of such license.

Restricted Rights Legend

If software is for use in the performance of a U.S. Government prime contract or

subcontract, Software is delivered and licensed as “Commercial computer software” as defined in DFAR 252.227-7014 (June 1995), or as a “commercial item” as defined in FAR 2.101(a) or as “Restricted computer software” as defined in FAR 52.227-19 (June 1987) or any equivalent agency regulation or contract clause. Use, duplication or disclosure of Software is subject to Keysight Technologies’ standard commercial license terms, and non-DOD Departments and Agencies of the U.S. Government will receive no greater than Restricted Rights as defined in FAR 52.227-19(c)(1-2) (June 1987). U.S. Government users will receive no greater than Limited Rights as defined in FAR 52.227-14 (June 1987) or DFAR 252.227-7015 (b)(2) (November 1995), as applicable in any technical data.

Safety Notices

CAUTION

A **CAUTION** notice denotes a hazard. It calls attention to an operating procedure, practice, or the like that, if not correctly performed or adhered to, could result in damage to the product or loss of important data. Do not proceed beyond a CAUTION notice until the indicated conditions are fully understood and met.

WARNING

A **WARNING** notice denotes a hazard. It calls attention to an operating procedure, practice, or the like that, if not correctly performed or adhered to, could result in personal injury or death. Do not proceed beyond a WARNING notice until the indicated conditions are fully understood and met.

In This Guide...

The scope of this Getting Started Guide is to detail the processes of receiving and installing the modules of the Keysight M9290A CXA-m PXIe Signal Analyzer.

Additionally, installing the required software is documented. If you have any questions after reviewing this information, please contact your local Keysight Technologies Inc. representative or contact us through our website at www.keysight.com/find/m9290a

1 Unpack and Verify the Shipment Contents

This chapter provides the process to unpack and verify the contents of the signal analyzer.

2 Install the Module

Refer to this chapter to install the CXA-m analyzer in a PXI Express chassis.

3 Installing the Software and Licensing

This chapter guides you to install the CXA-m software and redeem application license in Microsoft Windows 7.

4 Launching Modular SA Application

This chapter describes the process to launch a modular SA application in Microsoft Windows 7.

5 Running Modular SA Application

This chapter provides some guidelines for using a virtual front panel with the signal analyzer.

6 Troubleshooting

This chapter details some basic steps that may solve any problems you are experiencing with the signal analyzer.

Where to Find the Latest Information

Documentation is updated periodically. For the latest information about the product, including instrument software upgrades, application information, and product information, browse to one of the following URLs:

<http://www.keysight.com/find/cxa-m>

The documentation associated with this product is available at the CXA-m product pages on keysight.com (go to **Document Library > Manuals**).

To receive the latest updates by email, subscribe to Keysight Email Updates at the following URL:

<http://www.keysight.com/find/emailupdates>

Information on preventing analyzer damage can be found at:

<http://www.keysight.com/find/PreventingInstrumentRepair>

Is your product software up-to-date?

Periodically, Keysight releases software updates to fix known defects and incorporate product enhancements. To search for software updates for your product, go to the Keysight Technical Support website at:

<http://www.keysight.com/find/techsupport>

1 Unpack and Verify the Shipment Contents

Initial Inspection	8
Inspect for Damage	8
Electrostatic Discharge Protection	8
If there is a Problem	10
Verify M9290A Shipment Contents	11
Instrument Information	12
Protecting Against Overpowering	12
Instrument Maintenance	12

2 Module Installation

Install the Module	14
Front-Panel Overview	16
Instrument Symbols	17

3 Software Installation and Licensing

Getting Started with CXA-m Software	20
Download the CXA-m software	20
Controller Requirement	20
Software Installation	21
Uninstalling the Software	26
Keysight CXA-m Signal Analyzer Licensing Options	27
How to Get a License	27
License Types	28
Licensing Measurement Application Software - After Initial Purchase	30
Install License by Using a USB Storage Device	30
Install License by Using License Manager	31
Transporting a License	33

4 Launching Modular SA Application

Configure Application Tool	36
----------------------------	----

Contents

Application Launcher	37
Start Launcher	37
Launcher Features	39
Hardware License Installation	43
Launching Modular SA Application with Launcher	44
Launch Modular SA Application Manually	44
Launch Modular SA Application Automatically	44
Launch Modular SA Application by Programming Codes	46
Launch Modular SA Application by Keysight Connection Expert	47
Launch Modular SA Application by IVI driver	48

5 Running Modular SA application

Display Annotations	50
Using Virtual Front Panel	52
Unhide/Hide Soft Keys	54
Open Virtual Front Panel from Right-Click Menu	54
Virtual Front Panel for Multiple Modules	55
Virtual Front Panel Keys Definition	56
Using Right-Click Menu	59
Using the Interactive Help System	61
Navigating the Signal Analyzer Application by keyboard	62
TCP/IP Address Configuration	65
Address Setting in Local Control	65
Address Setting in Remote Control	67

6 Troubleshooting

Check the Basics	70
Returning an Analyzer for Service	72
Calling Keysight Technologies	72
Locations for Keysight Technologies	72
Read the Warranty	73
Service Options	73

1 Unpack and Verify the Shipment Contents

This section explains how to verify the shipment contents when you receive the shipment.

The following topics can be found in this section:

"Initial Inspection" on page 8

"Verify M9290A Shipment Contents" on page 11

"Instrument Information" on page 12

Initial Inspection

Inspect the shipping container and the cushioning material for signs of stress. Retain the shipping materials for future use, as you may wish to ship the analyzer to another location or to Keysight Technologies for service.

Inspect for Damage

After unpacking a module, inspect it for any shipping damage. Report any damage to the shipping agent immediately, as such damage is not covered by the warranty.

CAUTION

To avoid damage when handling a module, do not touch exposed connector pins.

Electrostatic Discharge Protection

Electrostatic discharge (ESD) can damage or destroy electronic components (the possibility of unseen damage caused by ESD is present whenever components are transported, stored, or used).

CAUTION

The modules are shipped in materials which prevent damage from static. The modules should only be removed from the packaging in an anti-static area ensuring that correct anti-static precautions are taken. Store all modules in anti-static envelopes when not in use.

WARNING

DO NOT use these techniques for a static-safe work station when working on circuitry with a voltage potential greater than 500 volts.

Test equipment and ESD

To help reduce ESD damage that can occur while using test equipment:

- Before connecting any coaxial cable to an analyzer connector for the first time each day, momentarily short the center and outer conductors of the cable together.
- Personnel should be grounded with a 1 M Ω resistor-isolated wrist-strap before touching the center pin of any connector and before removing any assembly from the analyzer.
- Be sure that all instruments are properly earth-grounded to prevent build-up of static charge.
- Perform work on all components or assemblies at a static-safe workstation.
- Keep static-generating materials at least one meter away from all components.
- Store or transport components in static-shielding containers.
- Always handle printed circuit board assemblies by the edges. This reduces the possibility of ESD damage to components and prevent contamination of exposed plating.

Additional information about ESD

For more information about ESD and how to prevent ESD damage, contact the Electrostatic Discharge Association (<http://www.esda.org>). The ESD standards developed by this agency are sanctioned by the American National Standards Institute (ANSI).

If there is a Problem

If the shipping materials are damaged or the contents of the container are incomplete:

- Contact the nearest Keysight Technologies office.
- Keep the shipping materials for the carrier's inspection.
- If you must return an analyzer to Keysight Technologies, use the original (or comparable) shipping materials.

CAUTION

Analyzer damage can result from using packaging materials other than those specified. Never use styrene pellets in any shape as packaging materials. They do not adequately cushion the equipment or prevent it from shifting in the carton. They cause equipment damage by generating static electricity and by lodging in the analyzer, blocking airflow.

Verify M9290A Shipment Contents

The Keysight M9290A CXA-m PXIe Signal Analyzer is a module, housed in a PXIe chassis. Please verify the shipment contents according to the table below.

Table 1-1

Items included in your M9290A Shipment

Qty	Part Number	Description
1	E2094-60003	Keysight IO Libraries Suite CD
1	5962-0476	Calibration Certificate
1	5061-7383	South Korean Class A EMC Declaration
1	M9290-90008	CXA-m Software and Product information DVD
1	M9290-90007	CXA-m Getting Started and Troubleshooting Guide
1	9320-6698	China RoHS Addendum
1	M9290A	CXA-m PXIe Signal Analyzer

NOTE

All the manuals and software contained on the CD are available from
www.keysight.com/find/m9290a

Instrument Information

Protecting Against Overpowering

The input circuitry of the analyzer can be damaged by applying signals that exceed the maximum safe input level of +30 dBm average total power or ± 0.2 Vdc (when DC coupled) or ± 50 Vdc (when AC coupled). Refer to the analyzer's specification guide for more details regarding the Maximum Safe Input Level. Repairing damage to the input circuitry can be expensive.

If the analyzer will be used to measure signals which might be near the maximum safe input level, use external attenuators and/or limiters to help protect the analyzer input. The External Gain, amplitude Corrections, and/or Ref Lvl Offset features may be used to compensate for the gains and losses of external devices. External Gain and Corrections are under the Input/Output menu and Ref Lvl Offset is under the AMPTD Y-Scale menu.

Instrument Maintenance

WARNING

Operator is responsible to maintain safe operating conditions. To ensure safe operating conditions, modules should not be operated beyond the full temperature range specified in the Environmental and physical specification. Exceeding safe operating conditions can result in shorter lifespans, improper module performance and user safety issues. When the modules are in use and operation within the specified full temperature range is not maintained, module surface temperatures may exceed safe handling conditions which can cause discomfort or burns if touched. In the event of a module exceeding the full temperature range, always allow the module to cool before touching or removing modules from chassis.

Cleaning Connectors

Cleaning connectors with alcohol shall only be done with the instrument power cord removed, and in a well-ventilated area. Allow all residual alcohol moisture to evaporate, and the fumes to dissipate prior to energizing the instrument.

WARNING

Keep isopropyl alcohol away from heat, sparks, and flame. Store in a tightly closed container. It is extremely flammable. In case of fire, use alcohol foam, dry chemical, or carbon dioxide; water may be ineffective.

Use isopropyl alcohol with adequate ventilation and avoid contact with eyes, skin, and clothing. It causes skin irritation, may cause eye damage, and is harmful if swallowed or inhaled. It may be harmful if absorbed through the skin. Wash thoroughly after handling. In case of spill, soak up with sand or earth. Flush spill area with water.

Dispose of isopropyl alcohol in accordance with all applicable federal, state, and local environmental regulations.

2 Module Installation

This chapter describes the process to install the CXA-m module into a PXI express chassis and the general information of the front panel.

"Install the Module" on page 14

"Front-Panel Overview" on page 16

"Instrument Symbols" on page 17

Install the Module

Before installing the CXA-m module into a PXI express chassis, please read all the safety information carefully and make sure the chassis is in a proper condition as below.

- Ensure proper chassis air flow is maintained. The M9018A chassis has multiple air intakes located on the lower sides, lower front and bottom front of chassis.



- Select a chassis that provides thermal protection if fans become inoperable or forced air cooling is obstructed
- Use slot blockers and EMC filler panels in empty module slots to ensure proper operating temperatures. Keysight chassis and slot blockers optimize module temperature performance and reliability of test.
- Set chassis fans to high or auto. Do not disable fans.
- Position chassis to allow plenty of space around chassis air intake and fan exhaust.
- At environment temperatures above 45°C, set chassis fan speed to high.

WARNING

Keysight Technologies does not warrant third-party system-level (combination of chassis, controllers, modules, etc.) performance, safety, or regulatory compliance, unless specifically stated.

CAUTION

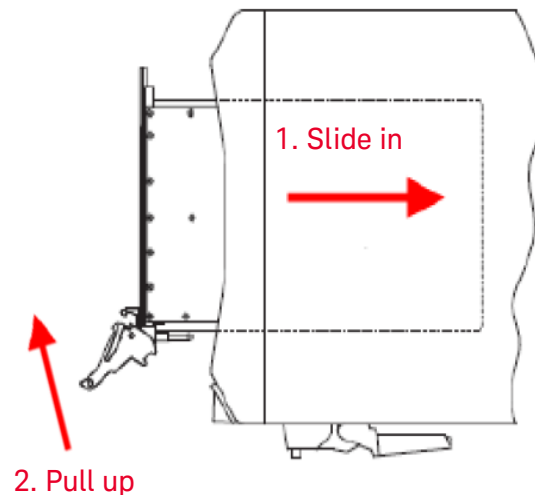
PXI hardware does not support "hot-swap" (changing modules while power is applied to the chassis) capabilities. Before installing or removing a module to/from the chassis, power off the chassis to prevent damage to the module.

The CXA-m module in a PXI express chassis occupies 4 empty slots. Please refer to the chassis documentation for further information about how to use the chassis.

Perform the following steps to install a CXA-m module in a chassis:

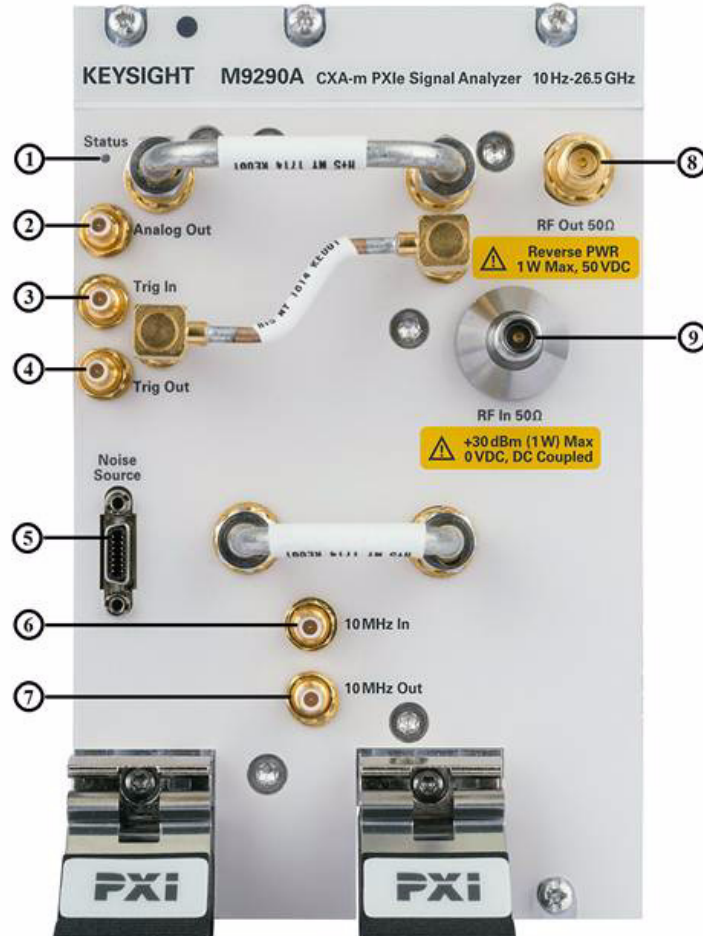
1. Make sure the line cord is plugged in to establish earth ground and the chassis power switch is in the Off (Standby) position.
2. If the chassis has multiple fan speed settings, ensure the fans are set to automatic. Do not set the fan speed to low or turn it off.

3. Position the chassis so that there is ample space between the chassis fan intake and exhaust vents. Blockage by walls or obstructions affects the air flow needed for cooling.
4. Before installing a module, be sure to remove the plastic thread protectors from the mounting screws. Before inserting the module into the chassis, back the mounting screws out to assure that there is no interference between the screws and the mounting rails. Inspect the chassis slot to ensure there are no bent pins on the slot connectors.
5. Ensure the ejector handles of the module are in the unlatched (downward) position.
6. Insert CXA-m analyzer into 4 contiguous empty slots by placing the module card edges into the top and bottom module guides.



7. Carefully Slide the module completely into the chassis. When you begin to feel resistance, pull up on the injector/ejector handle to fully insert and latch the module into the chassis. Refer to the figure above.
8. Tighten the screws at the top and bottom of the module front panel for both mechanical security and to ensure proper grounding of the front panel. Performance may suffer if the screws are not tightened properly.
9. Verify the PXI chassis fans are operable and free of dust and other contaminants that may restrict airflow.
10. Position the chassis so that inlet and outlet vents are not obstructed.
11. Cover all empty chassis slots by using filler panels or air inlet modules. You can find them on the Keysight Technologies website.
<http://www.keysight.com/find/accessories>
12. Plug in and power on the chassis.

Front-Panel Overview



Item		Description	Remark
#	Port Name		
1	Status LED	LED indicator of the module status	On: Modular SA application has been invoked on this CXA-m module. Blink: FPGA is updating on the module. Off: The module is not in above situations.
2	Analog Out	Analog signal output port	
3	Trig In	Input Trigger port	Level Range -5 to +5 V
4	Trig Out	Output Trigger port	Level Range -5 to +5 V
5	Noise Source	Noise Source port	For Keysight 346 and SNS Series noise sources
6	10 MHz In	10 MHz reference input port	Frequency: 10 MHz Resistance: 50 Ω Amplitude Range: -5 to +10 dBm
7	10 MHz Out	10 MHz reference output port	Amplitude > 0 dBm
8	RF Out	RF output port	Reverse PWR 1 W Max, 50 VDC Reserved for future use
9	RF In	RF input port	+30 dBm (1W) Max; 0 VDC, DC Coupled

Instrument Symbols



The instruction documentation symbol. The product is marked with this symbol when it is necessary for the user to refer to instructions in the documentation.



The CE mark is a registered trademark of the European Community.



All Level 1, 2 or 3 electrical equipment offered for sale in Australia and New Zealand by Responsible Suppliers must be marked with the Regulatory Compliance Mark.



This is a marking of a product in compliance with the Canadian Interference-Causing Equipment Standard (ICES-001).

This is also a symbol of an Industrial Scientific and Medical Group 1 Class A product (CISPR 11, Clause 4).



This symbol indicates separate collection for electrical and electronic equipment mandated under EU law as of August 13, 2005. All electric and electronic equipment are required to be separated from normal waste for disposal (Reference WEEE Directive 2002/96/EC).



Indicates the time period during which no hazardous or toxic substance elements are expected to leak or deteriorate during normal use. Forty years is the expected useful life of the product.



This symbol on all primary and secondary packaging indicates compliance to China standard GB 18455-2001.



South Korean Class A EMC Declaration
A 급 기기 (업무용 방송통신기자재)

이 기기는 업무용 (A 급) 전자파적합기기로서 판매자 또는 사용자는 이 점을 주의하시기 바라며, 가정외의 지역에서 사용하는 것을 목적으로 합니다.

This equipment is Class A suitable for professional use and is for use in electromagnetic environments outside of the home.

To return unwanted products, contact your local Keysight office, or see <http://www.keysight.com/environment/product/> for more information.

3 Software Installation and Licensing

This chapter describes how to install the CXA-m instrument software in Microsoft Windows 7 operating system, referred to as Windows 7.

The virtual front panel of the analyzer has been designed with the keys needed to navigate windows for: accessing menus, traversing in dialogs, selecting items, and depressing displayed buttons.

The following topics can be found in this chapter:

"Getting Started with CXA-m Software" on page 20

"Software Installation" on page 21

"Keysight CXA-m Signal Analyzer Licensing Options" on page 27

"Licensing Measurement Application Software - After Initial Purchase" on page 30

"Transporting a License" on page 33

Getting Started with CXA-m Software

The CXA-m software offers a standard spectrum analyzer measurement application for traditional spectrum analysis and power measurements based on industry specifications. Additional measurement applications are available. Each application requires a license to execute the software. You may purchase additional licenses at a later date.

CXA-m software supports Windows 7 64-bit, English Version.

Download the CXA-m software

The M9290A CXA-m software is located on the M9290A Software and Product information DVD (M9290-90008). The same software is also available for downloading at the Keysight website:

www.keysight.com/find/cxa-m_software

Controller Requirement

To successfully install and run CXA-m software, your controller/computer should meet following requirements.

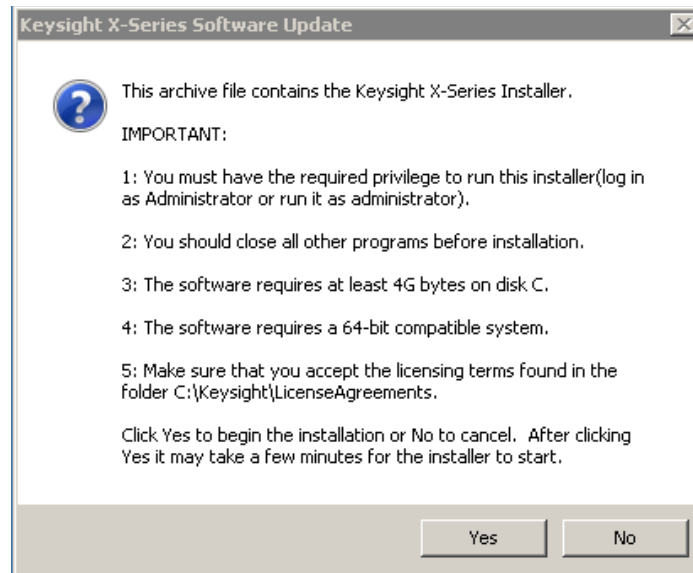
Topic	One Module	Two Modules	Three/Four Modules
Operating system	Window 7 (64-bit), English Version	Window 7 (64-bit), English Version	Window 7 (64-bit), English Version
Processor	Single Core with hyper threading, 1.86 GHz	Dual Core with hyper threading, 1.86 GHz	Quad Core with hyper threading, 1.86 GHz
Available memory	4 GB minimum	4 GB minimum, 8 GB or greater recommended	8 GB minimum, 16 GB or greater recommended
Available disk space on Drive C:	4 GB	4 GB	4 GB

Software Installation

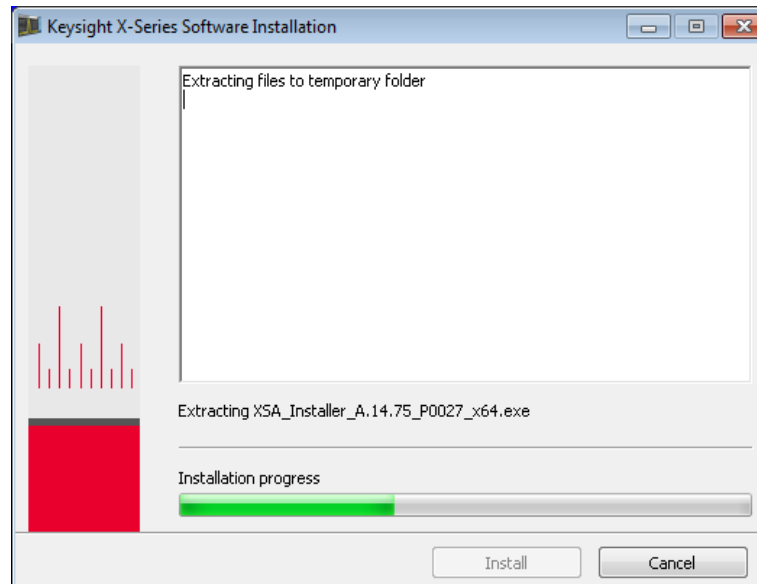
To install the application software, please make sure the operation system on your controller must be Windows 7 (64-bit).

Please refer to the procedures below to install the CXA-m application software in Windows 7.

1. Login the windows as administrator.
2. Right click *M9290A_Installer_X.XX.XX_XXXXX_Self-Extractor_x64.exe* and select "Run as administrator" to start the installation. Installation file will be extracted first as following:



3. Click **Yes** to continue the installation after confirming the requirements.
Installation file will be extracted first:



NOTE The installer will perform requirements check after extracting. 4G Bytes free space on Drive C: is required for software installation. If there is not enough space, the requirements check will be failed. Please exit the installation, clean up your disk and try again.

4. After requirements check passed, if a Modular SA application has been installed on the controller, the installer will uninstall the old version application first:



If there is no old version Modular SA Application installed, this step will be skipped.

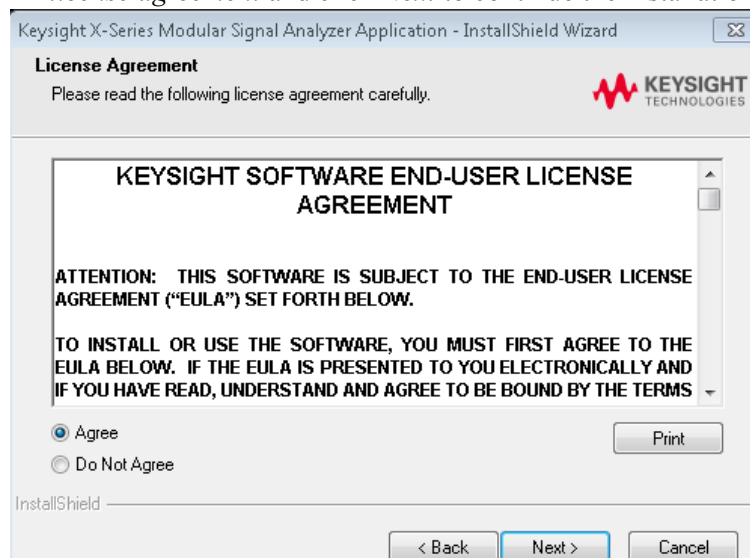
5. After uninstalling successfully, an instruction of installing Modular Signal Analyzer Application will be shown as following:



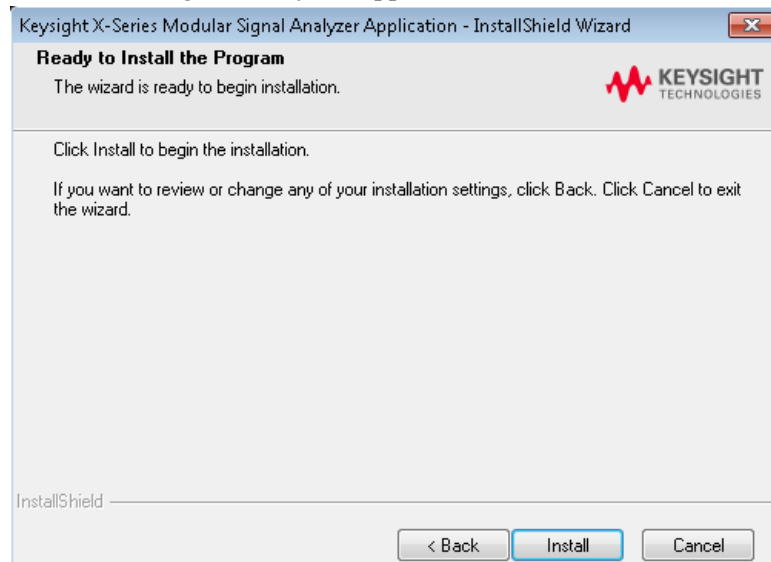
CAUTION

The installation includes possible FPGA re-programming. If the AC power is interrupted during installation process, it could render your instrument inoperable. Please make sure the chassis is plugged into a reliable power source before performing the installation.

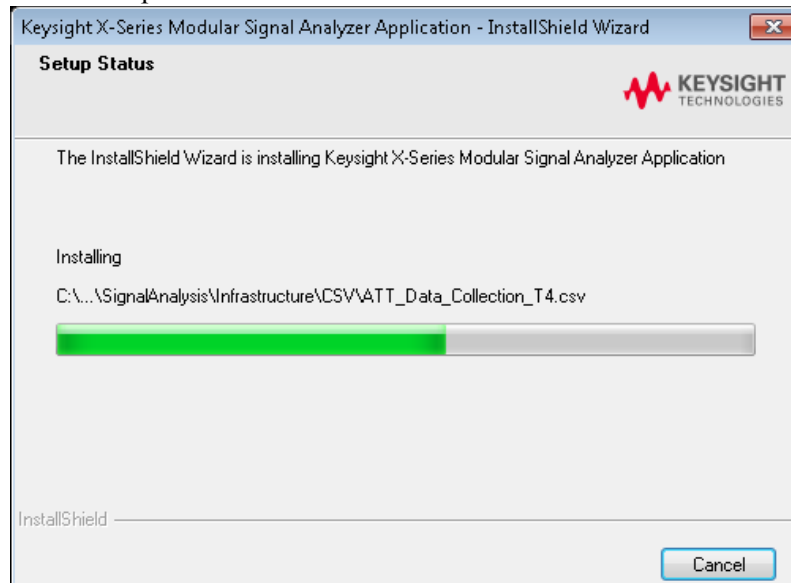
6. Click "Next", a window of License Agreement will be shown as following. Please read the license agreement carefully and click *I accept the term of the license agreement* and click *Next* to continue the installation.



7. InstallShield Wizard is ready to begin installation, click "Install" to install X-Series Modular Signal Analyzer Application:



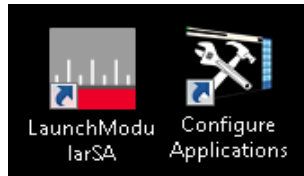
8. The installation process will be shown as below:



NOTE During installation process, some prompt boxes and windows will be popped up. If any FPGA version on installed module is different with the version required by current Modular SA, FPGA on that module will be updated during the installation process. If FGPA is updated by installation process, please power off the chassis and then power on to make the FPGA update take effects.

NOTE If the installation is failed, a window will pop up with possible root causes information. Please check the message and follow the instruction to recover the installation accordingly.

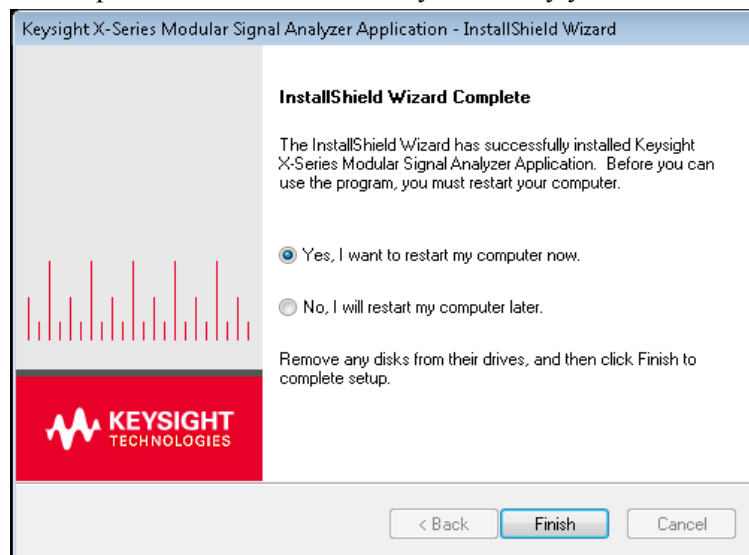
9. At the end of installation, one message box will pop up to ask user to create shortcuts at desktop or not. If *Yes* is selected, two shortcuts of the applications will be created at the desktop.



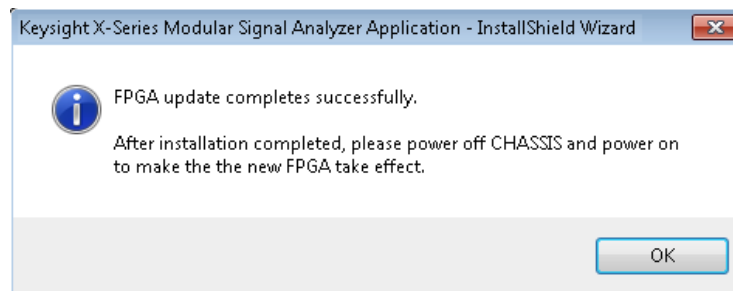
LaunchModularSA.exe is used to launch Modular SA applications on CXA-m module. Please refer to "[Application Launcher](#)" on page 37 for further information.

ConfigureApplications.exe is used to configure the applications that will be loaded when the application is launching. Please refer to "[Configure Application Tool](#)" on page 36 for further information.

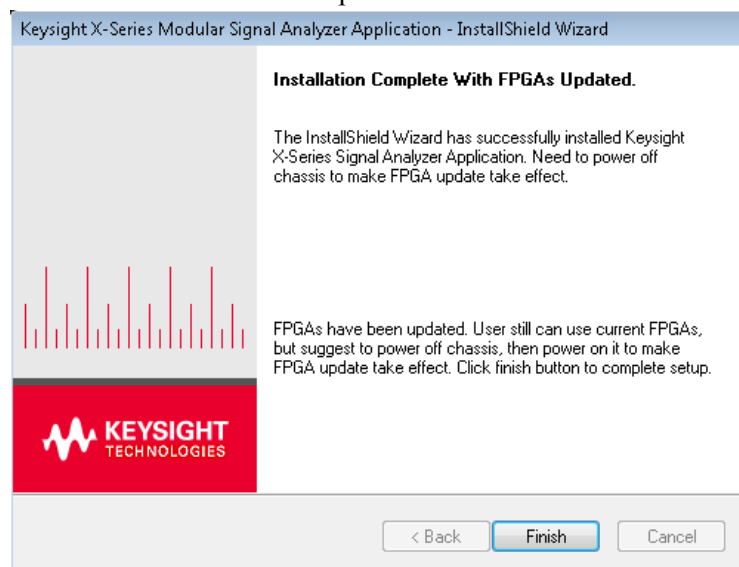
10. The installation is completed.
 - If there is no FPGA update during installation process, a prompt box will pop up to ask you to restart the computer/controller. Click "Finish" to restart computer/controller immediately or later by yourself.



- If FPGA is updated successfully during installation process, a prompt box will pop up to inform user to power off the chassis and then power on to make FPGA update take effect.



Click "OK" to enter last step of installation:



Click "Finish" to complete the installation process. You should power off and then power on the chassis to make the FPGA update take effect.

Uninstalling the Software

You can uninstall the software from the *Uninstall or change a program* window. Click *Control Panel -> Programs and Features* to show the window, and select *Keysight X-Series Signal Analyzer Application* and click *Uninstall* to start the uninstall program.



The following items will be kept after the uninstallation is completed.

- User saved files
- Licenses
- System configuration files
- Module database
- FPGA

Keysight CXA-m Signal Analyzer Licensing Options

How to Get a License

By using the entitlement certificate (See following figure) delivered with your module or received in your email, you can log on to Keysight's License website and redeem your license now.

		Keysight Order Number: 3393840 Keysight Certificate Number: XK57-G3XH
Option Upgrade Entitlement Certificate		
This certificate is evidence of the entitlement for the following		
Product	Description	Quantity
W9064AL-2FP	W9064A-2FP Flexible digital modulation analysis measurement application for CXA-m, fixed perpetual license	1
W9064AL-1FP	W9064A-1FP Vector signal analysis measurement application for CXA-m, fixed perpetual license	1
W9069AL-1FP	W9069A-1FP Noise Figure Measurement Application for CXA-m, fixed perpetual license	1
W9069AL-AFP	W9069A-AFP Noise figure feature enhancements for CXA-m, fixed perpetual license	1
INSTRUCTIONS: HOW TO REDEEM YOUR LICENSE Log into Keysight's licensing website at www.keysight.com/find/softwaremanager to redeem your license. You will need the following information: • Keysight Order Number and Keysight Certificate Number from the top of this certificate • Host ID (Model/Product Number and Serial Number of your instrument > press System, Show, System) For technical and sales support, visit www.keysight.com/find/contactus .		
Rights and restrictions on the use, transfer, and copying of the Software are set forth in Keysight Technologies' Software License agreement. CID: 4003 Page 1 of 1		
 5964-5178		

You will need the entitlement certificate plus information outlined below about your controller to redeem your licenses using the internet at the URL shown in the lower left of the Certificate. When you redeem the licenses associated with the entitlement certificate you will receive an e-mail with the license key or file(*.lic) and installation instructions.

To complete the redemption process you need:

1. The Entitlement Certificate (Keysight Order Number and Keysight Certificate Number)

2. The Host identification information (Host ID) of the controller for software license. You can obtain controller Host ID by using Keysight License Manager or by pressing *System->Show->System* from Modular SA Application.
3. Module Host ID for hardware license. You can obtain Module Host ID by using Launcher from the Module Licenses Window.

NOTE	If host ID of your controller/computer is changed, for example by re-image, the licenses installed on your controller/computer will be disabled. You should send both the old host ID and new host ID to Keysight to reproduce the licenses.
-------------	--

Instructions for redemption of licenses can be found on the entitlement certificate and at the following website:

<http://www.keysight.com/find/softwarelicense>

For additional licenses, please refer to following link to review what types of licenses are supported by CXA-m and how to get them:

<http://www.keysight.com/find/m9290a>

License Types

There are two types of licenses for Keysight CXA-m Signal Analyzer: Hardware license and software license. The License Manager is needed to install both of the two licenses on the controller.

Hardware license is the module hardware related license that need be installed on the module and only works with the module in which the hardware license is installed on. For example: P07, FSA, and B25.

Software license is the software related license that is only installed on controller and can be shared among M9290A modular SA Application instances running on the controller, such as the measurement application licenses.

The Keysight CXA-m Signal Analyzer uses two licensing types for measurement applications: Transportable Perpetual and Trial.

Transportable Perpetual

Transportable Perpetual licenses are an optional license type offering deployment duration which is not fixed to a specific instrument model and serial number.

Transportable Perpetual licenses are identified in the product structure by a “T” in the second character and “P” in the third character of the option designator:

Example: W9063A-2TP

Transportable Perpetual licenses require a connection to the Keysight server only for managing the check-in/out of the license. The Keysight licensing server also provides for storage of unused licenses which have been transported off instruments but are awaiting assignment to new instruments. The server will limit the number of transports per 30 day period per application license to 10.

Transportable Perpetual licenses require redemption and installation of the license before the first use. This allows the user to determine on which instrument to initially install the application license.

Keysight recommends that instruments be at the same instrument software release to ensure the latest code is available on each instrument so that the user experience is identical between instruments. This is particularly important when transporting the license for a newly-released application which may only be available in the latest software release.

Trial licenses

Trial licenses are available so that you may try applications before you buy the full applications. These licenses are time limited for a 30 day period, and are restricted to one trial for an individual application per instrument. The restriction is enforced through the license redemption process of the Keysight Software Licensing (ASL) system.

Trial licenses are only available for measurement applications and not available for enabling hardware capability.

Trial licenses are not installed in the factory and no entitlement certificates are created for distribution with new instrument shipments. Trial licenses are not available for order, but are available from the Keysight Web site after completing a brief registration:

http://www.keysight.com/find/xseries_trial

Trial Licenses are identified by the license designator “-TRL”.

Example: W9063A-TRL

If a product has multiple tiers (levels of functionality), the -TRL license enables all tiers for the duration of the license. If you have a base tier and want a trial license for a higher tier, you can install the -TRL license. When the duration expires the entitlement is reverted back to the base tier.

Licensing Measurement Application Software - After Initial Purchase

Additional measurement application software can be ordered after your initial purchase of the signal analyzer. Software upgrades are provided in a kit that includes an option based Entitlement Certificate and a license agreement. The licenses are downloaded from the license Web site onto a USB storage device so they can be loaded into the instrument.

For all software upgrades, we recommend that the latest version of the instrument software be installed. This ensures that the measurement application being licensed and activated is installed and is the most current version.

The latest revision of the software may be downloaded from:

http://www.keysight.com/find/cxa-m_software

NOTE	No calibration is required after a measurement application installation.
-------------	--

Install License by Using a USB Storage Device

Please refer to the procedures below to install a measurement application license with a USB storage device on the controller:

Step	Action	Notes
1.Redeem the Option Upgrade Entitlement Certificate	Follow the instructions on the Certificate	After redeeming your Option Upgrade Entitlement Certificate you will receive an e-mail with an attached License File.
2. Save the license file	Save the .lic file to the root directory of a USB storage device	
3. Load the license file	Connect the USB storage device to the USB ports of controller/computer. Make sure Keysight License Manager is running on your controller/computer.	The signal analyzer will automatically load the license file. (This may take a few minutes) Upon completion, the Keysight License Manager will display a "Successful License Installation" message.

NOTE	Alternatively the license file can be manually installed over USB or LAN by placing the license file in the following folder on the controller/computer. C:\Program Files\Keysight\licensing
-------------	---

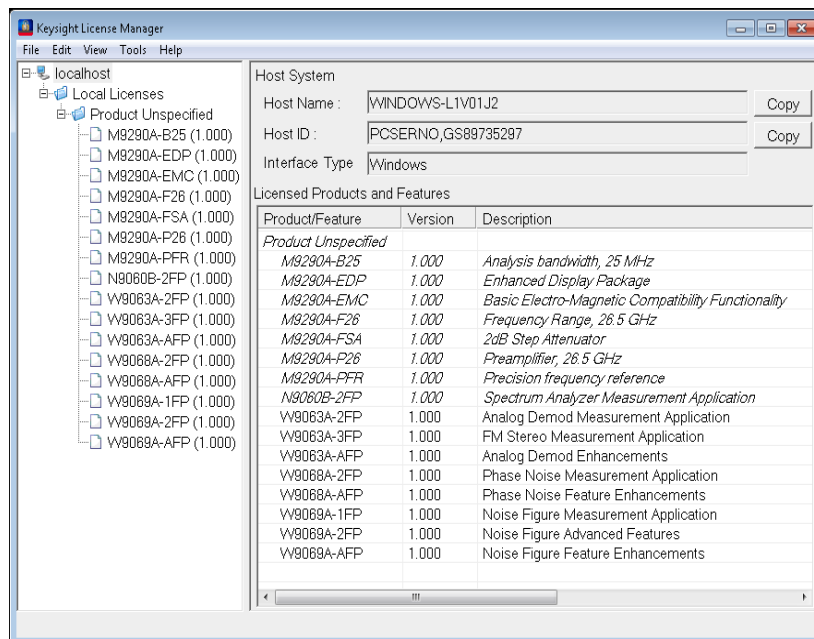
Step	Action	Notes
4. Verify installation	Launch Modular SA application. Click Utility, System, Show, System . Verify that the new application appears in the list.	This displays the list of installed applications. If you require further assistance, please contact the Keysight support team. Online assistance: http://www.keysight.com/find/assist If you do not have access to the Internet, contact your local Keysight Technologies Sales and Service Office.

Install License by Using License Manager

For the user who is not available to use the USB storage device, the license manager can be used to install the license through network. The License Manager is installed while the CXA-m software is installed. Please follow the following steps to install the license with License Manager:

1. Follow the procedures above to redeem the license.
2. Place the license file either on a network-connected driver or any other place where the controller can access it.
3. Starting License Manager.

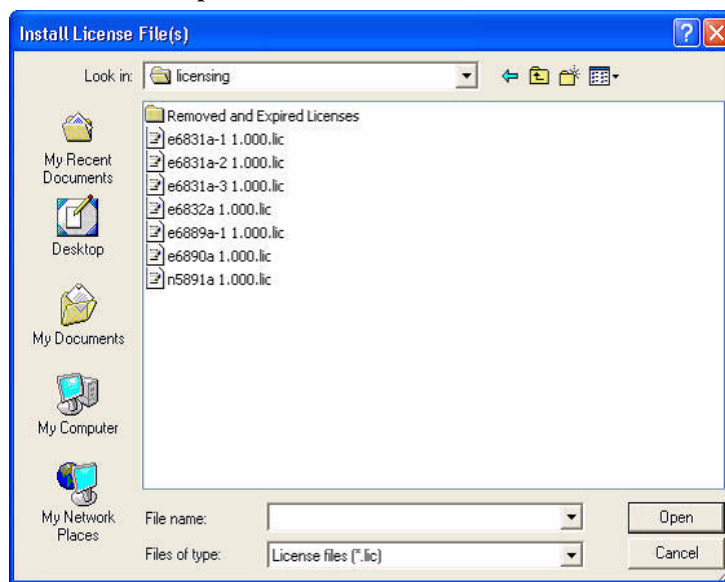
To start Keysight License Manager from the Windows Start menu, click the Windows Start button, and then select: *All Programs > Keysight License Manager > Keysight License Manager*. Refer to the following figure for overview of License Manager GUI.



Keysight License Manager provides a graphical user interface (GUI) that gives you a visual representation of the installed licenses on your controller.

The Tree View is the left pane. The selected node in the Tree View affects the displayed information in the Details View (right pane). The Details View is used to view and manage licenses for a system, or to view and manage alerts associated with time-perishable licenses.

4. Select the target system's node in the Tree View.
5. Click **File** menu in License Manager, and then select **Install License(s)**. An Install License File(s) window pops up.
6. In this window, browse to the license file location, select the license file(s), and then click the **Open** button.



The license is automatically installed (from the previously selected license file) and now appears in the Tree View as an installed license under the system. Note that the install operation takes some time to complete (up to 30-40 seconds).

To complete hardware licensing, please refer to ["Hardware License Installation" on page 43](#).

Transporting a License

Transportable licenses can be identified by the letters "TP" in their option designator. For example, W9063A-2TP indicates the license is transportable and perpetual. To transport this license from one controller to another, Keysight recommends that both controllers be at the same software release. This ensures that the user experience is identical between controllers. As a minimum, the target system must at least be able to support the desired application.

The CXA-m signal analyzer support several ways of transporting licenses. The procedure below will focus on the most common procedure, where neither of the controller has access to an internet connection. We will refer to the controller from which the transportable license will be removed as the "source system/controller". We will refer to the controller which will receive the transportable license as the "target system/controller".

Keysight recommends that the system running Keysight License Manager is connected to the Internet, and connected to both the source system and target system, which are connected to a LAN. If you do not have this recommended network configuration, see the Keysight License Manager Help for details on how to transport a license.

If you have the recommended network configuration implemented, you can easily transport a transportable license by performing the following procedure:

1. In Keysight License Manager, have both the source system and target system connected and visible in the Tree View.
2. In the Tree View, expand the source system's Installed Licenses node so that all installed licenses are visible.
3. In the Tree View, drag the transportable license from the source system to the target system's IP address/hostname node.

The license is automatically transported from the source system to the target system, and it now appears under the target system's installed licenses in the Tree View. Note that the transport operation takes some time to complete (up to 60-90 seconds) due to the Internet activity with the Keysight software- license- redemption procedure.

If either the source system or the target system is not visible in the Tree View because the Tree View's displayed area is too small to contain both systems, you can transport a license by cutting and pasting the transportable license. (That is, cut the license from the source system, scroll to the target system, and then paste the license into the target system.

4 Launching Modular SA Application

This chapter provides the information on how to launch a Modular SA application with topics below.

"Configure Application Tool" on page 36

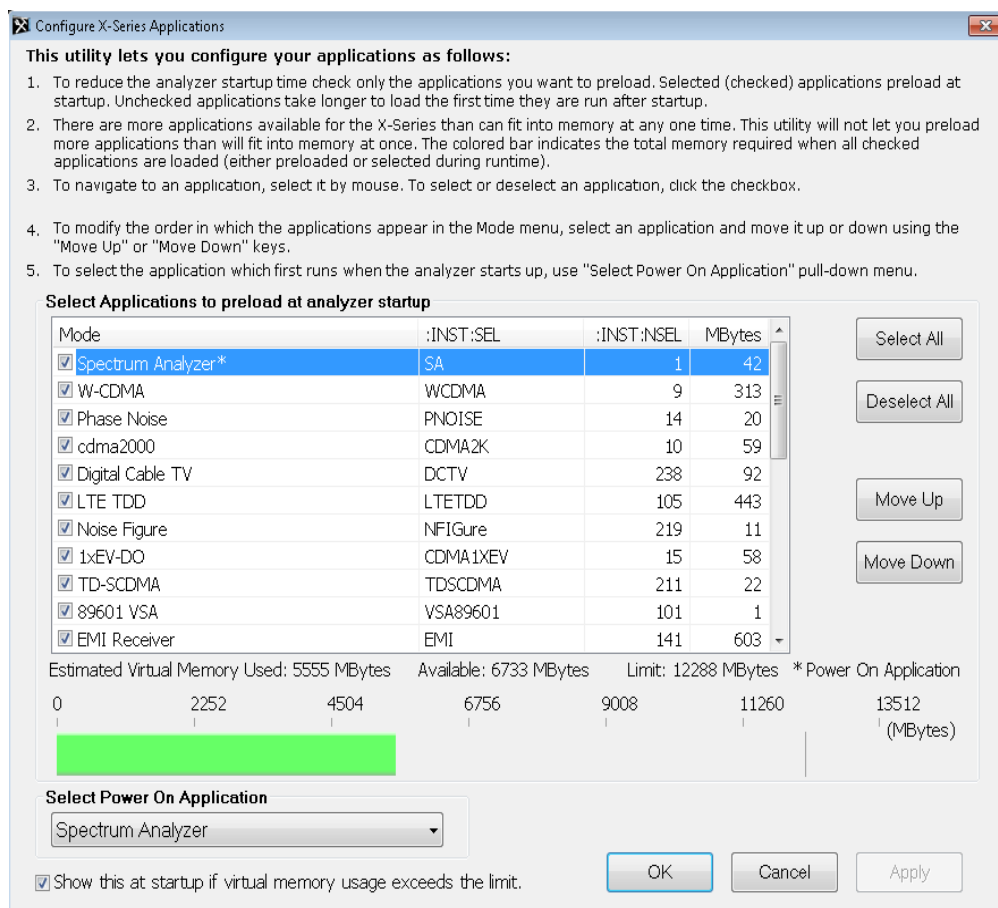
"Application Launcher" on page 37

"Launching Modular SA Application with Launcher" on page 44

Configure Application Tool

The program *ConfigureApplications.exe* on the desktop allows you to configure certain behaviors of the applications (Modes). When this program runs, it affects the behavior at Modular SA application startup. If you run it while the Modular SA application is running, it will take effect the next time the Modular SA application starts up.

Double-click on this icon *Configure Applications.exe*, the following dialog pops up:



Follow the instructions in this dialog to configure your applications as desired.

For multiple instances of the Modular SA Application on the same computer/controller, the same Configure Applications Utility is shared between all the instances, the same application configuration will be used on each application instance. The required memory shown on the panel is just for one Modular SA Application instance.

NOTE


The Spectrum Analyzer Measurement Application is standard for M9290A without license required. Additional measurement applications are available. Each application requires a license to execute the software.

Application Launcher

CXA-m Launcher is a tool for invoking the Modular SA applications for one or multiple modules. It also can be used to update the FPGA and install module hardware license.

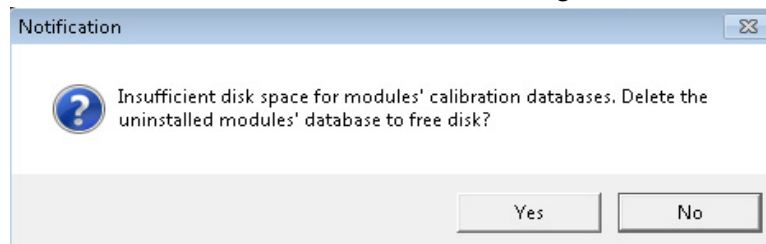
Before launching any application, M9290A module should be installed into the chassis.

Start Launcher

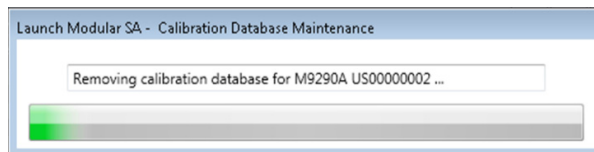
Please click  start Launcher from the desktop, or start it from *Windows Start > All Programs > Keysight Signal Analysis > LaunchModularSA*.

Database Maintenance

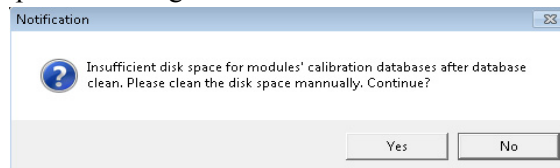
After Launcher starting, it will check the free space on controller drive C: first. If there is not enough free space on drive C:, a message box will pop up to delete the database for all uninstalled modules as following:



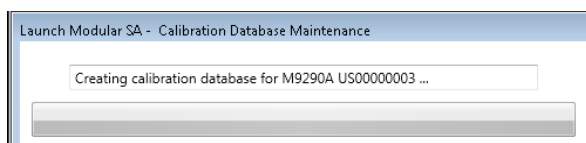
Choose "Yes" to delete the database for the modules which are unplugged from chassis. A notification as following will be shown when launcher is removing the database for the uninstalled modules:



After database removing, if the free space is still not enough, a message box will pop up as following to remind user to clean the disk space manually:

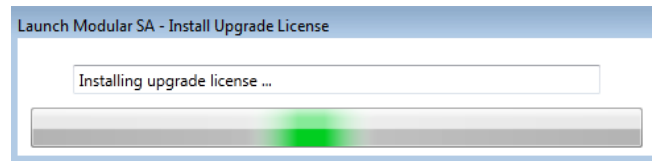


Then, launcher will create database for the newly installed module which does not have database.

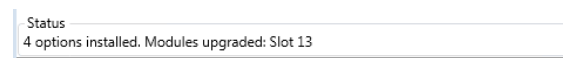


Hardware License Installation

Launcher starting process will check if there is any Hardware License available for the installed modules. If there is Hardware License installed on License Manager but not upgraded to module hardware, Launcher will check the Hardware License and update the License to Module. A prompt box will be shown as below when Hardware License is upgrading:



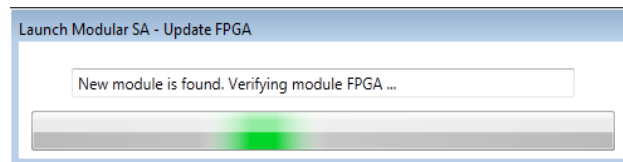
After Hardware License is upgraded to module successfully, it will be removed in License Manager and after Launcher UI is displayed, installed option number and on which module will be displayed on Status bar:



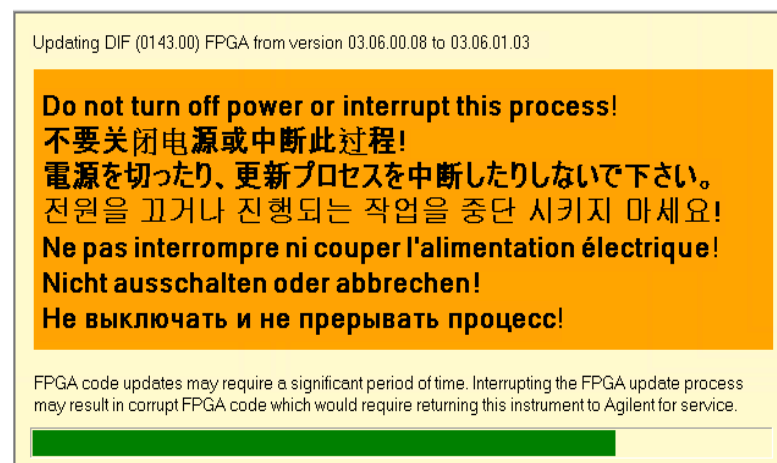
If you install Hardware License to License Manager after Launcher is started, you can also upgrade Hardware License to module hardware by Launcher UI.

FPGA Updating

Launcher will check the FPGA versions on all installed modules. Following message box will be popped up when Launcher is verifying FPGA on new found module.

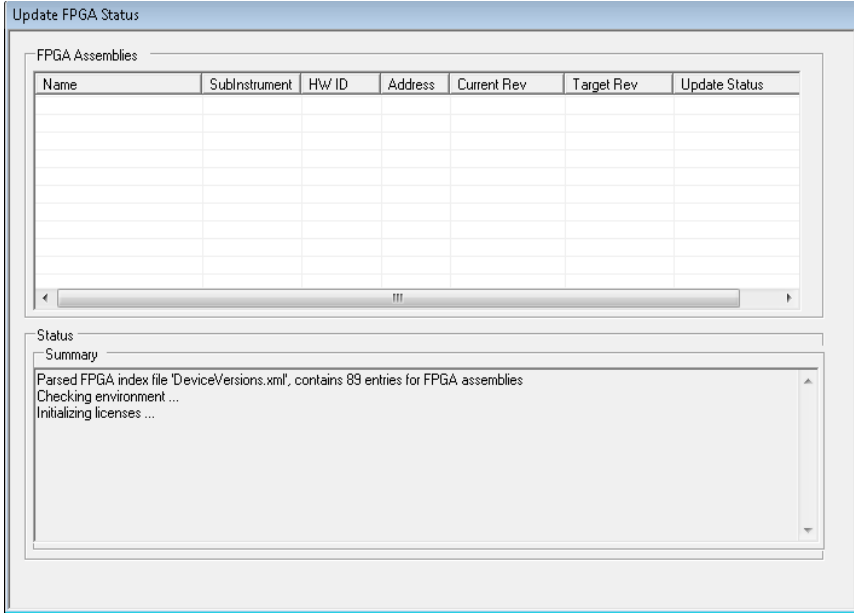


If any FPGA version is different with the version required by current Modular SA, FPGA on that module will be updated automatically. During FPGA updating, a message box will be shown as following and the LED on that module will be in Fast Blink mode.

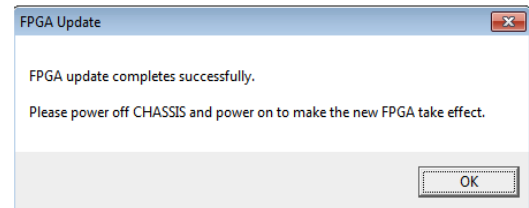


If there is more than one module that needs FPGA updating, they will be updated one by one. Above message box will be popped up for each updating process.

A window of "Update FPGA Status" will be shown during the FPGA update process as following to indicate the detailed update status:

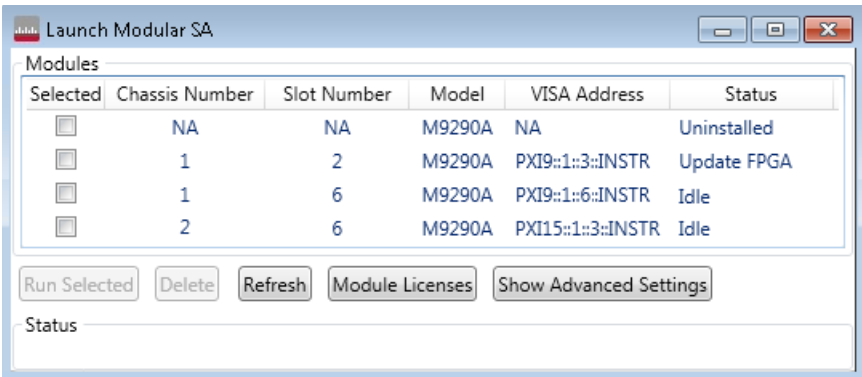


After FPGA update completed successfully, following message box will pop up to inform you to shut down and then power on the chassis to enable the update:

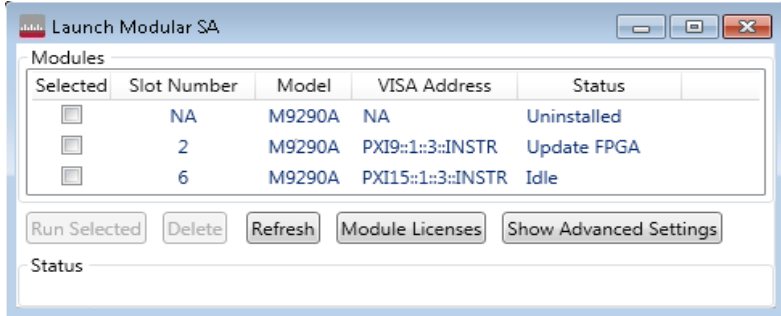
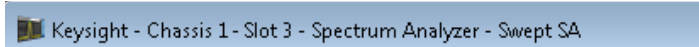



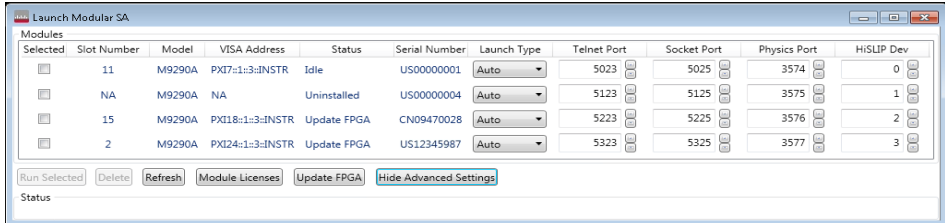
Launcher Features

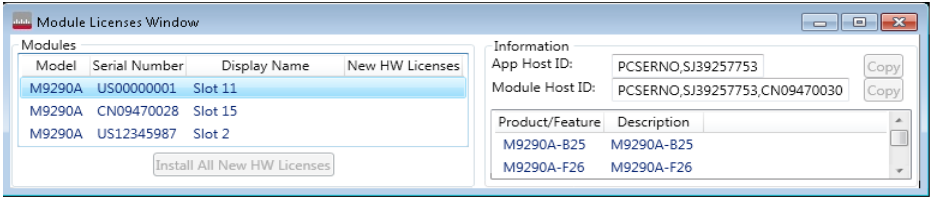
Launcher UI is shown as following for the configurations and launching. The modules shown in the list include not only the modules which have been saved in configuration file but also the modules that are not saved but currently existing in the chassis.



Please refer to the table below for the features of the launcher.

Items	Description
Selected	Indicates whether this module is selected. If this module is selected, the check box of that module will be checked
Chassis Number	<p>Shows the Chassis Number in which the module is inserted in. This column will only be visible when there is chassis number greater than 1. When there is only one chassis used, this column will be invisible, the panel shows as following:</p>  <p>If there is more than one chassis used, Chassis Number information will also be shown as a part of application title information, such as:</p>  <p>For the module which is uninstalled, the Chassis Number is shown as "NA".</p>
Slot Number	<p>Shows the Chassis Number in which the module is inserted in. For the module which is uninstalled, the Slot Number is shown as "NA".</p> <p>Slot number will be shown as a part of application title information, such as:</p> 
Model	Shows the model name of the module.
Visa Address	VISA address string for the module. If the module is uninstalled, the VISA address will be shown as "NA".
Status	<p>It indicates the status of each module as following:</p> <ul style="list-style-type: none"> • Idle: The module is in Idle state, no application running or FPGA updating with the module. It can be used to launch a Modular SA application. • Running: Modular SA application is running with the module. You can not launch another Modular SA application with this module. • Update FPGA: FPGA on the module is being updated, or the FPGA on the module need be updated. • Uninstalled: The module is not installed in the chassis. It is loaded from the saved configuration file but the module has been unplugged.

Items	Description
Run Selected:	<p>When this button is pressed, if current selected module's "Launch Type" is "Manual" Or "Auto", and the "Status" state is "Idle", the Modular SA application will be launched and connected to the indicated CXA-m module. In addition, the configurations will be saved into the configure file automatically.</p> <p>You can select multiple items via ctrl or shift and left click. You can also use mouse or arrow keys to change the selected module.</p>
Delete	Delete the uninstalled module from the module list.
Refresh	Refresh the module list by searching all existing CXA-m modules.
Show/Hide Advanced Settings	<p>When this button is pressed, the columns of advanced settings will be shown as below, and the button will be displayed as "Hide Advanced Setting".</p>  <p>The "Update FPGA" button will be shown when the Advanced Settings is unhidden. If you press it again, the columns of advanced settings will be hidden again.</p> <p>Serial Number: Shows the serial number of the module.</p> <p>Launch Type: Configures the start-up configuration of the software for the individual CXA-m modules in the chassis.</p>
	<p>There are three launch types:</p> <ul style="list-style-type: none"> Auto: If the launch type is "Auto", when you use command line to launch x application, the modular SA application will be launched for the module. Manual: If the launch type is "Manual", the controller can only run the Modular SA application by pressing "Run Selected" button with the check-box for the module selected. Disabled: If the launch type is "Disabled", the Modular SA application cannot be launched on the controller by "Run selected" button. <p>Telnet/Socket/Physics/HiSLIP Port: Sets the Socket Port, Physics Port, and HiSLIP Dev for each module in the list. For more information about these settings please refer to the Programming Guide.</p>

Items	Description
Update FPGA	<p>This key will be shown when the Advanced Settings is unhidden. It is used to update the FPGA of all the modules that are inserted in the chassis if the FPGA version on the module is different from the version required by Modular SA.</p> <p>If there is Modular SA running on the controller, this button will be disabled and grayed out. You need close all Modular SA instances and then use this button to update the FPGA.</p>
Module Licenses	<p>A panel for installing the module hard ware license will be shown by pressing this button.</p>  <p>The left pane shows a list of installed modules. The installed module hard ware licenses will be shown in the right pane after you selecting one module in the left pane.</p> <p>App Host ID is for redeeming software licenses on a controller, Module Host ID is for redeeming hard ware licenses for a module with a controller. You will be asked to provide these information when you are redeeming licenses.</p> <p>Use "Copy" button to copy the selected module host information text for the selected module. The copied host information can be pasted to where the host information is needed such as getting a hard ware license for the module.</p> <p>If there is any new hard ware license available, the new hard ware license will be shown in the "New HW licenses" column and the "Install All New HW License" button will be available to install all new hard ware licenses onto modules. Please refer to "Hardware License Installation" on page 43 for details.</p>

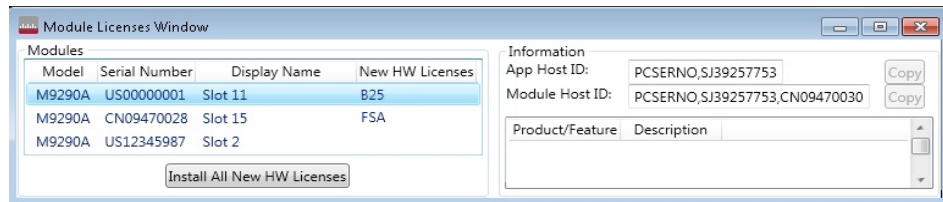
Hardware License Installation

Hardware license is the license that works with specified hardware features, such as "B25", "FSA". Hardware license can only work with the module that installed the license on.

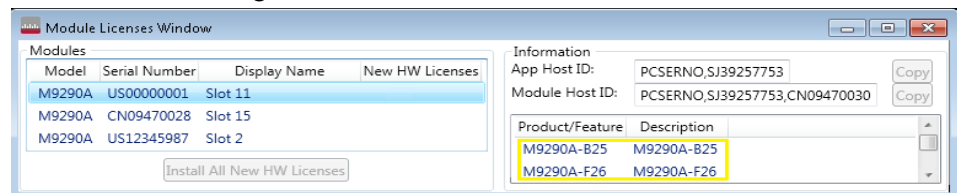
Hardware license is pre-installed inside module in factory before shipment, installing HW license is only requested for HW upgrade.

Following steps shows the recommended method to install hardware license:

1. Install hardware license file on controller by using Keysight License Manager. Please refer to ["Install License by Using License Manager" on page 31](#).
2. Open launcher and click "Module License" button, the module license window with available hardware licenses you installed in step 1 will be shown as following.



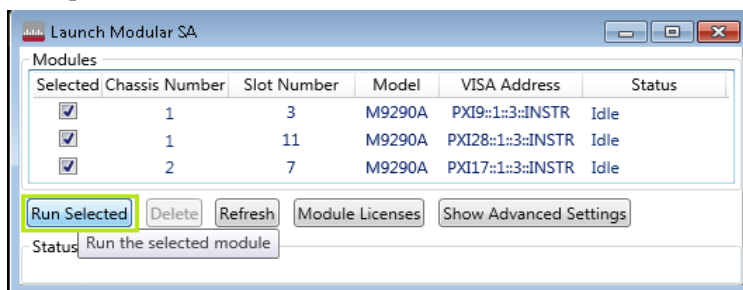
3. Click "Install All New HW Licenses" to install the hardware licenses. If there are multiple available licenses on multiple modules, all licenses on each module will be installed at same time. It will take several seconds to install the hardware licenses. After hardware license is installed successfully, the "New HW licenses" column will be empty and the "Install All New HW License" button will be disabled and grayed out.
4. Click on the module in the module list which you installed the hardware license on, make sure the hardware license is installed successfully from the module information on the right of the window.



Launching Modular SA Application with Launcher

Launch Modular SA Application Manually

Click "Run Selected" button in Launcher to launch Modular SA Application with one or multiple modules:

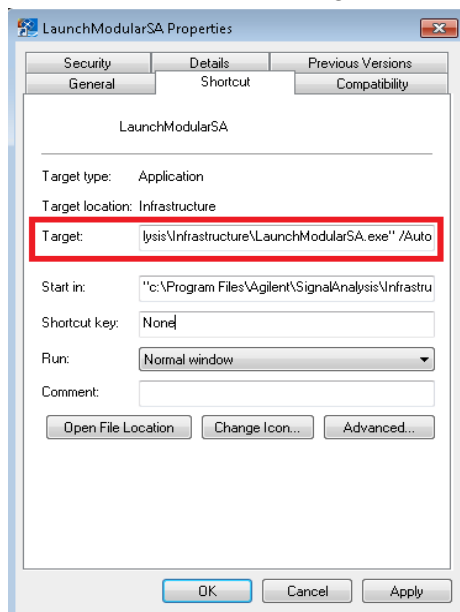


If multiple installed modules with "Idle" states are selected, multiple Modular SA application instances will be run with each module after clicking the button.

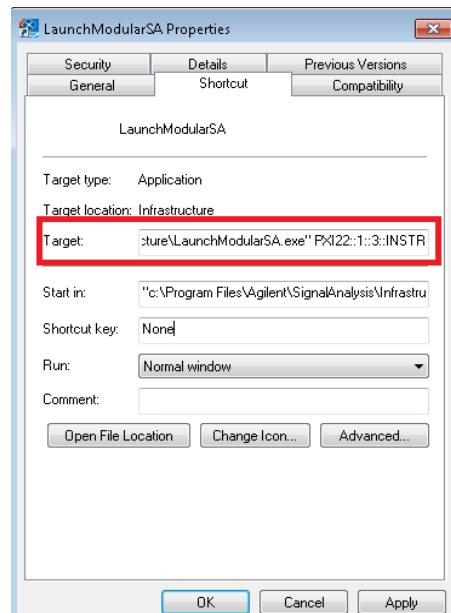
Launch Modular SA Application Automatically

You can also launch Modular SA Application automatically by configuring the argument of *LaunchModularSA.exe* as following steps:

1. Right click on the *LaunchModularSA.exe* icon on desktop and choose "Properties".
2. On the pop-up Properties panel, click *Shortcut* tab and add "/Auto" or PXI VISA address of the module as argument of the target as following:



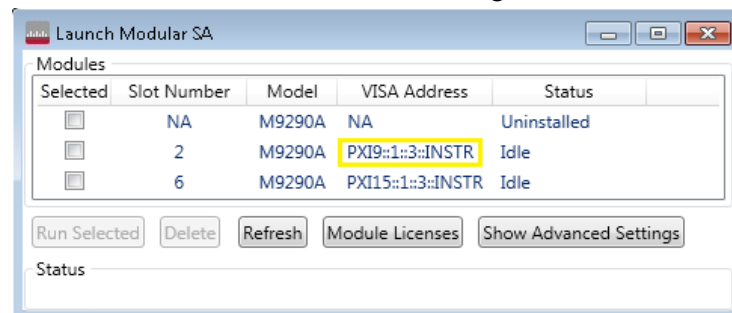
Or:



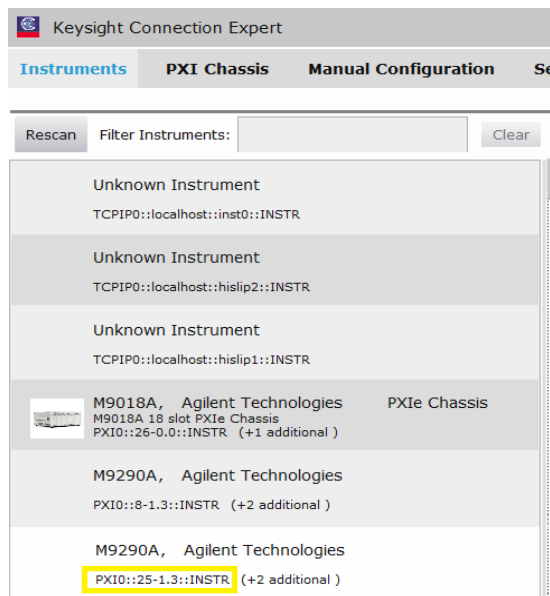
If the "/Auto" is added as argument, when the Launcher is started, Modular SA Application instances will be launched with all the installed modules with Launch Type of "Auto" that you configured last time from the Launcher UI. With this method you can launch multiple Modular SA Application instances with multiple modules.

If PXI VISA address is added as argument, when the Launcher is started, Modular SA Application instance will be launched with the module with the PXI VISA address you input. With this method you can only launch Modular SA Application instance with one specified module.

PXI VISA address of the module can be got from the Launcher UI such as:



You can also get the PXI VISA Address from Keysight Connection Expert as below:



3. Click **Apply** and **OK** to apply the argument.
4. Run Launcher. If the argument is added correctly, Modular SA application will be launched automatically without showing the Launcher UI.
5. You can drag LaunchModularSA.exe with correct argument into the window Startup folder, so that Modular SA application will be launched automatically when you start up the controller next time.

Launch Modular SA Application by Programming Codes


Just like any other execute files, you can also program to launch Modular SA Application by starting the Launcher with correct argument. See following example code in C#:

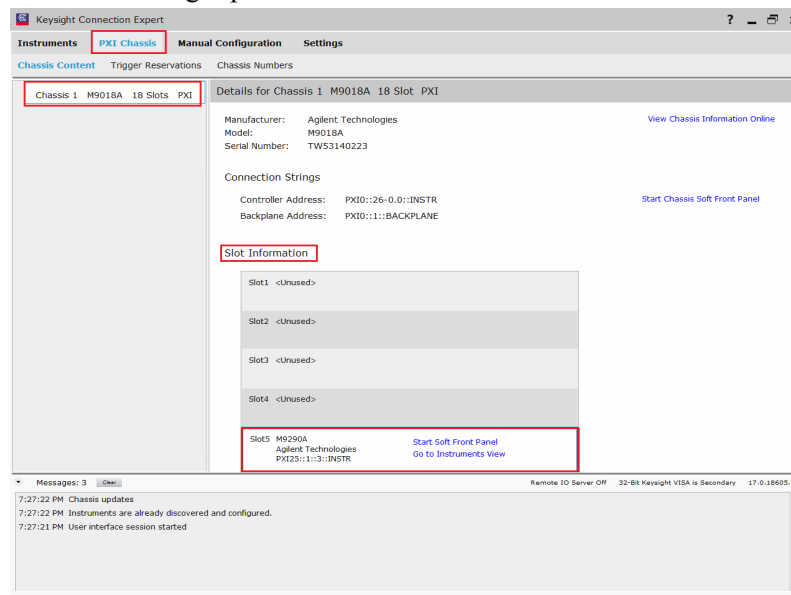
```
try
{
    Process process = new Process();
    process.StartInfo.UseShellExecute = false;
    process.StartInfo.FileName = "Launcher.exe";
    process.StartInfo.Arguments = "PXI8::1::3::INSTR";
    process.Start();
    process.WaitForExit();
    exitCode = process.ExitCode;
}
catch (Exception ex)
```

The argument setting could be either /Auto or PXI VISA address. For details of the argument, please refer to "Launch Modular SA Application Automatically" on page 44.

Launch Modular SA Application by Keysight Connection Expert

Keysight Connection Expert is a software utility that helps you to quickly connect and configure your interfaces and instruments, verify operation, and troubleshoot connectivity problems. It can also be used to launch Modular SA Application on CXA-m module. Following steps shows the procedure of launching Modular SA Application on a CXA-m module by using Keysight Connection Expert:

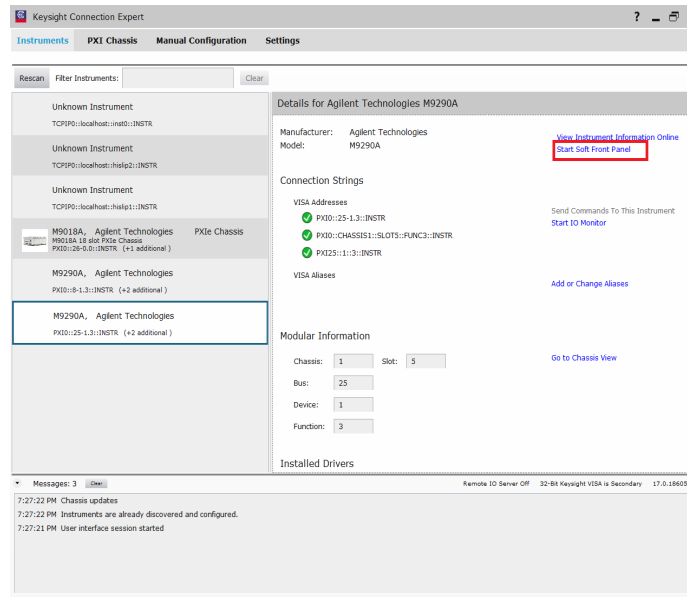
1. To run Connection Expert, click the IO Control icon  in the Windows Notification Area and click *Connection Expert*.
2. After Keysight Connection Expert is launched, click "PXI Chassis" on the menu bar, the Chassis list shows on the left pane and the details of current Chassis shows on the right pane.



Launching Modular SA Application

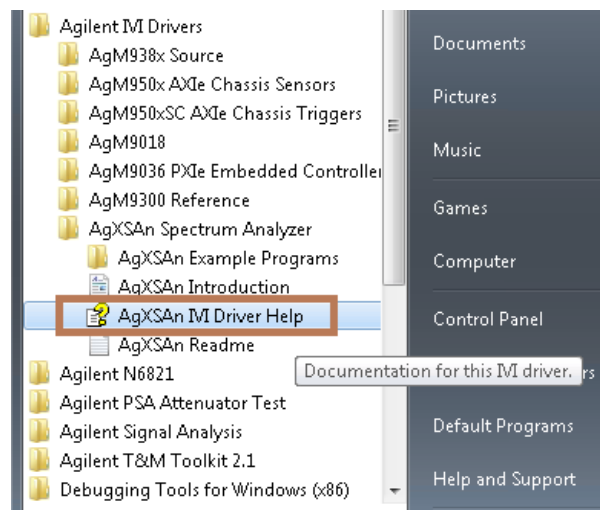
Launching Modular SA Application with Launcher

3. Choose a M9290A module from the Slot Information pane and click "Start Soft Front Panel", Modular SA Application will be launched with the M9290A selected module. You can also click on "Go to Instruments View" and click "Start Soft Front Panel" on the Module Details pane as following:



Launch Modular SA Application by IVI driver

Keysight's IVI drivers simplify the creation and maintenance of instrument control applications in a variety of development environments. IVI drivers allow you to programmatically control your instrumentation while providing a greater degree of instrument interchangeability and code reuse. For M9290A modules, you can also use IVI driver to launch the Modular SA Application on the module and then control and get data from the module. Please refer to Keysight's IVI drivers help document for details. The help document is located in: **Start Menu > All Programs > Keysight IVI Drivers > AgXSAn Spectrum Analyzer > AgXSAn IVI Driver Help**.



5 Running Modular SA application

This chapter provides some guidelines for using a virtual front panel with the signal analyzer.

"Display Annotations" on page 50

"Using Virtual Front Panel" on page 52

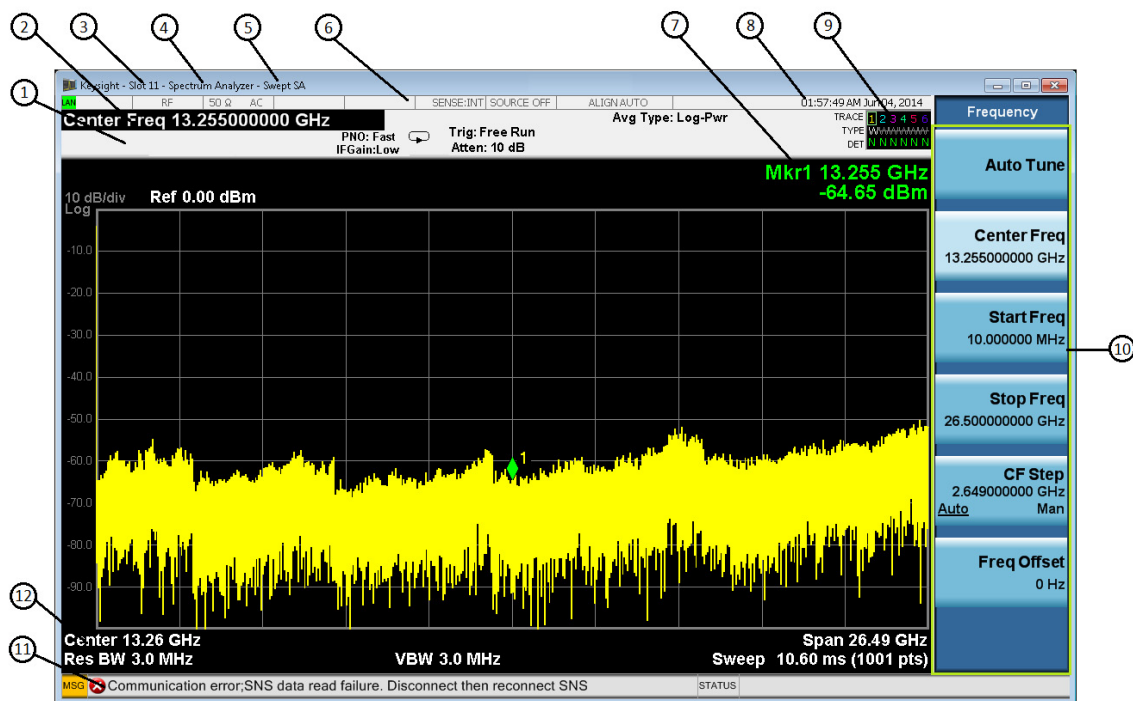
"Using Right-Click Menu" on page 59



"Using the Interactive Help System" on page 61

"Navigating the Signal Analyzer Application by keyboard" on page 62

Display Annotations

This section describes the display annotation as it is on the Spectrum Analyzer Measurement Application display. Other measurement application modes have some annotation differences.

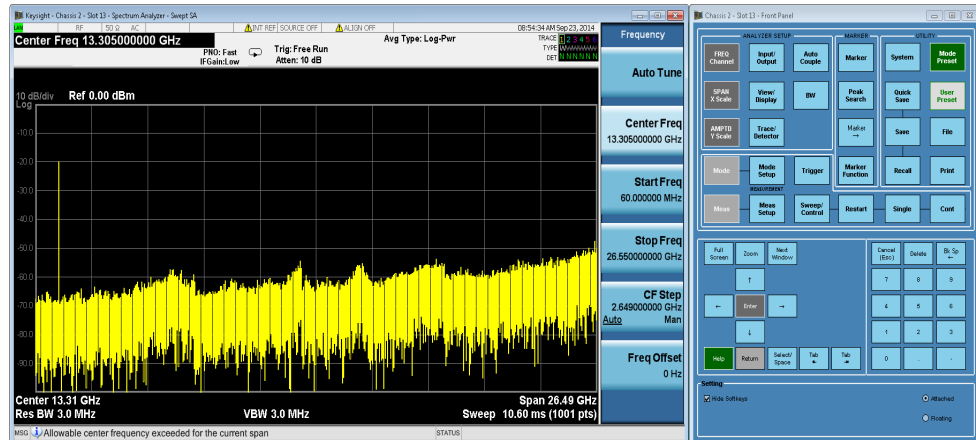


Item	Description	Function Keys
1	<p>Measurement bar - Shows general measurement settings and information.</p> <p>  Indicates single/continuous measurement.</p> <p>Some measurements include limits that the data is tested against. A Pass/Fail indication may be shown in the lower left of the measurement bar.</p>	All the keys in the Analyzer Setup part of the front panel.
2	Active Function (measurement bar) - when the current active function has a settable numeric value, it is shown here.	Currently selected front panel key.
3	Display Name - Shows the location of the module with which the application is running. If there is only one chassis is used, it shows "Slot <number>", otherwise, it shows "Chassis <number> - Slot <number>"	None

Item	Description	Function Keys
4	Banner - shows the name of the selected application that is currently running.	Mode
5	Measurement title - shows title information for the current measurement, or a title that you created for the measurement.	Meas View/Display, Display, Title
6	Settings panel - displays system information that is not specific to any one application. <ul style="list-style-type: none"> Input/Output status - green LXI indicates the LAN is connected. RLTS indicate Remote, Listen, Talk, SRQ Input impedance and coupling Amplitude Correction Status Frequency reference selection Setting of automatic internal alignment routine 	Local and System, I/O Config Input/Output, Amplitude, System and others.
7	Active marker frequency, amplitude or function value	Marker
8	Settings panel - time and date display.	System, Control Panel
9	Trace and detector information.	Trace/Detector, Clear Write (W) Trace Average (A) Max Hold (M) Min Hold (m) Trace/Detector, More, Detector, Average (A) Normal (N) Peak (P) Sample (S) Negative Peak (p)
10	Key labels that change based on the most recent key press.	Softkeys
11	Displays information, warning and error messages. Message area - single events, Status area - conditions.	System, Show, Errors
12	Measurement settings for the data currently being displayed in the graticule area. In the example above: center frequency, resolution band width, video band width, frequency span, sweep time and number of sweep points.	Keys in the Analyzer Setup part of the front panel.

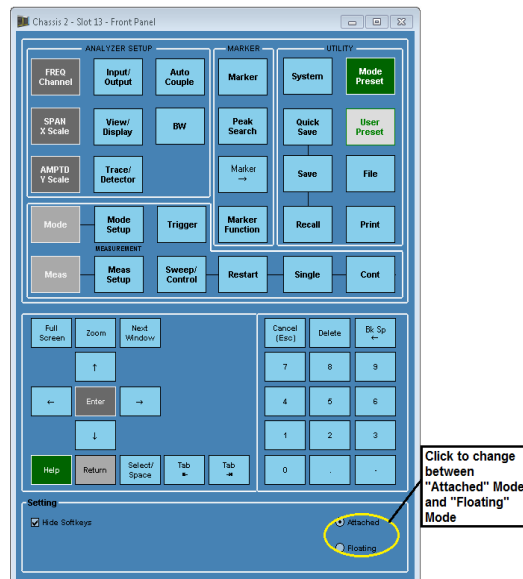
Using Virtual Front Panel

The CXA-m Virtual Front Panel is a software equivalent of the key set, which provides the control access to instrument. In CXA-m, there are two Virtual Panel mode: Attached mode and Floating mode. The attached mode of Virtual Panel is shown as below.

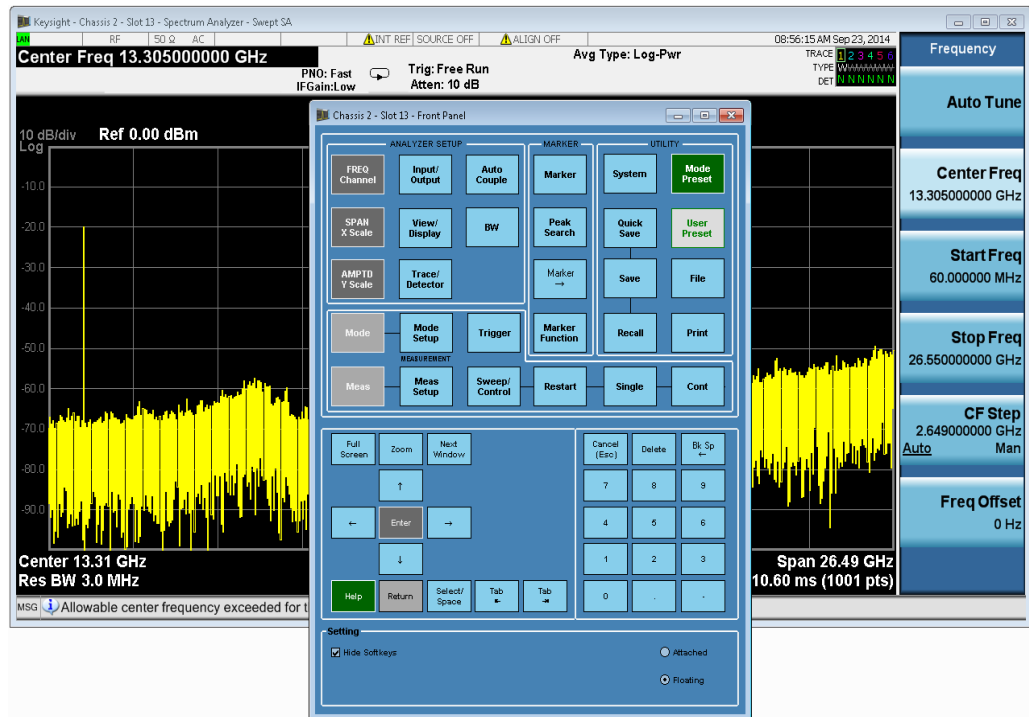


In "Attached" mode, the Virtual Front Panel attaches to the main application window. When you move, resize, or minimize the main application window, the Virtual Front Panel window will be moved, resized, or minimized at the same time. When you maximize the main application window, the Virtual Front Panel will be changed to "Floating" mode automatically. The operations to Virtual Front Panel window, such as resizing, minimizing and maximizing, will not affect the main application window. Virtual Front Panel window cannot be moved separately in "Attached" mode.

You can also change Virtual Front Panel from "Attached" mode to "Floating" mode manually by clicking "Floating" option at the lower right corner of the Virtual Front Panel window. By clicking the "Attached" option, it can return to the "Attached" mode once more.



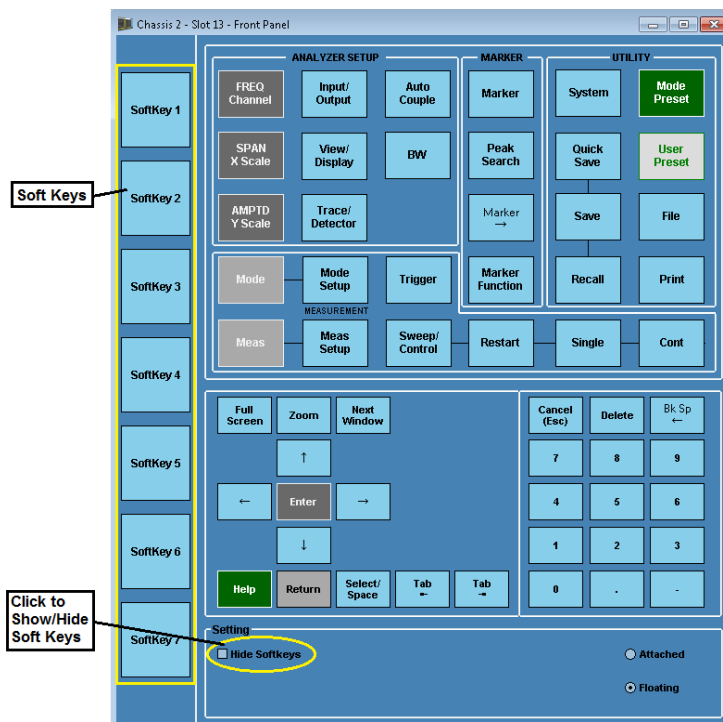
When Virtual Front Panel is changed to "Floating" mode, the main application window and Virtual Front Panel are shown as following:



In "Floating" mode, main application window and Virtual Front Panel window are two separated panels. Moving or resizing one window will not affect the other window. If main application window is in maximum size, changing Virtual Front Panel from "Floating" mode to "Attached" mode will resize main application window back to the size before it is maximized.

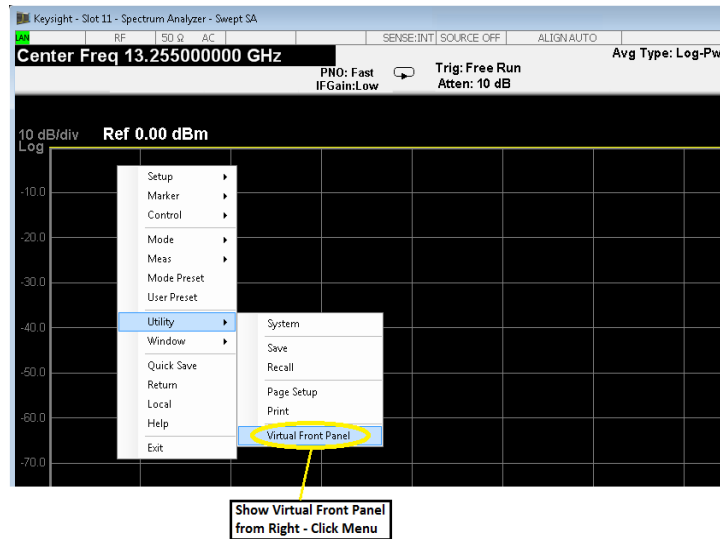
Unhide/Hide Soft Keys

There is also another configuration to unhide or hide the soft keys on Virtual Front Panel. The soft keys are hidden by default. By clicking "Hide Softkeys" on the bottom of the panel, you can unhide or hide soft keys. When soft keys are shown, Virtual Front Panel shows as following:



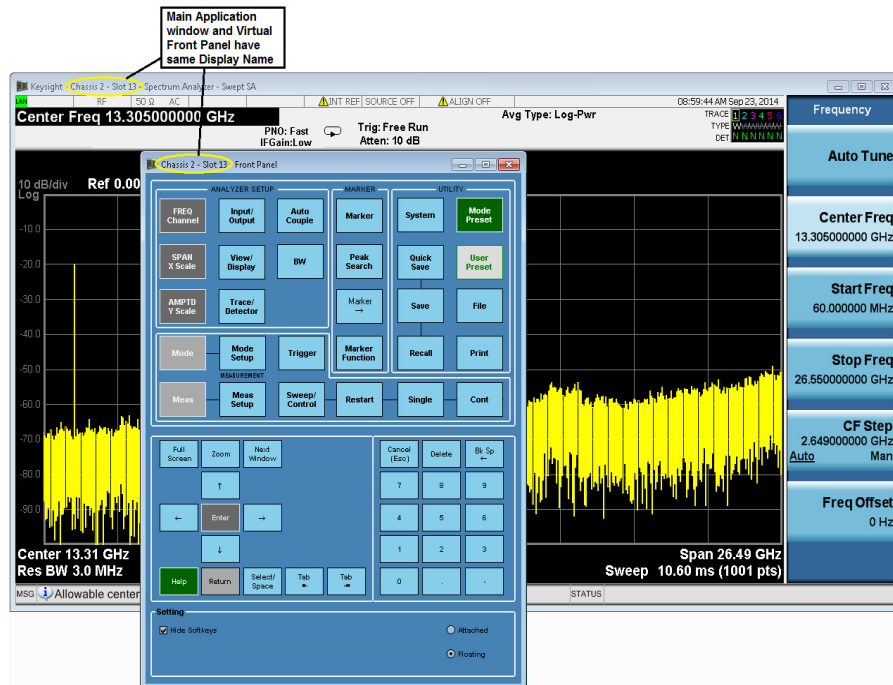
Open Virtual Front Panel from Right-Click Menu

Anytime when you close the main application window, the Virtual Front Panel will be closed as well. To gain more display space on the screen you can close the Virtual Front Panel. (Closing the Virtual Front Panel will not affect the main application window.) After you close the Virtual Front Panel window, you can reopen it from the Right-Click menu as following:



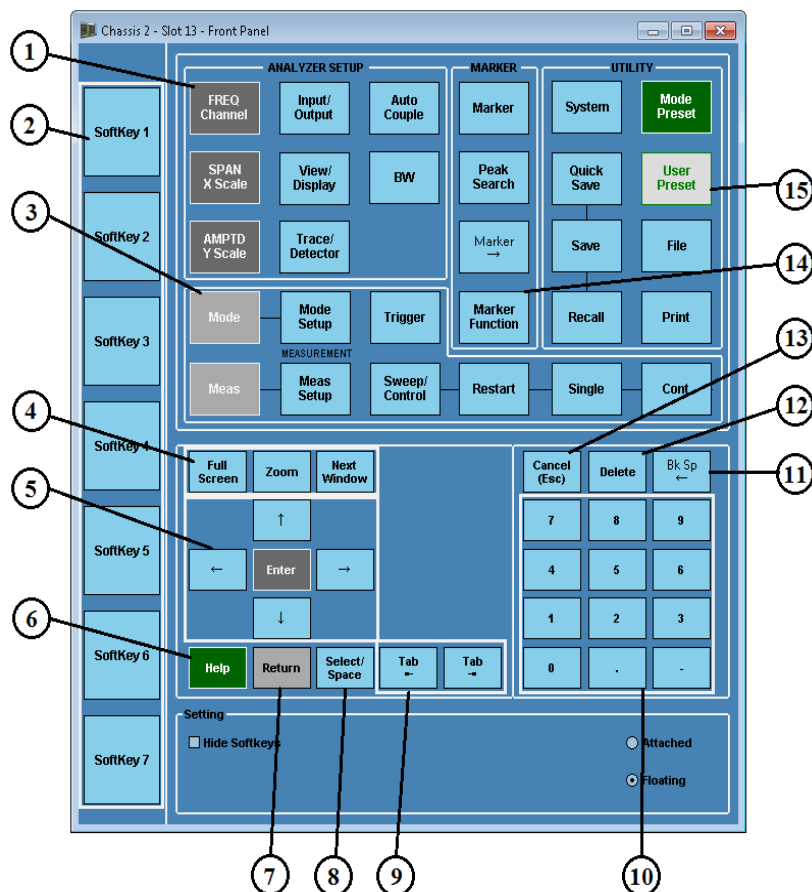
Virtual Front Panel for Multiple Modules

When there is more than one applications running on the controller, in "Attached" mode you can easily associate the main application window and Virtual Front Panel window because there are attached together; In "Floating" mode you can also associate the main application window and Virtual Front Panel window by the window title information. Main application window and Virtual Front Panel window have the same Display Name as following:



Virtual Front Panel Keys Definition

The control keys on the Virtual Front Panel are grouped as following:



When you click a button on the Virtual Front Panel, it performs the operation as following table:

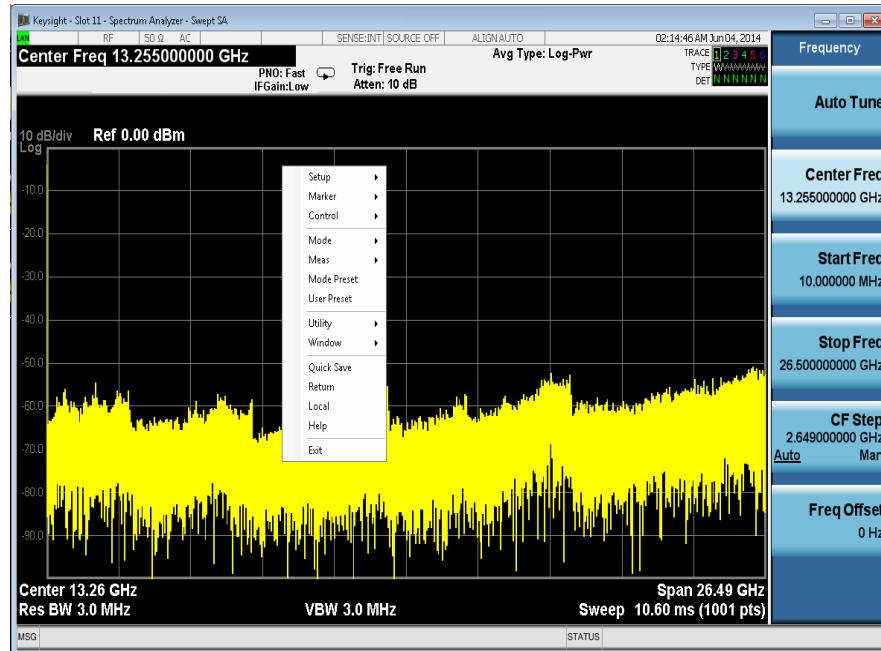
Item		Description
#	Name	
1	Analyzer Setup Keys	The keys set the parameters used for making measurement in the current Mode and Measurement.
2	Menu Soft Keys	Key labels appear to the left of the menu keys to identify the current function of each key. The displayed functions are dependent on the currently selected Mode and Measurement, and are directly related to the most recent key press.
3	Measurement Keys	These keys select the Mode and the Measurement within the mode. They also control the initiation and rate of recurrence of measurements.

Item		Description
#	Name	
4	Full Screen and Window Control Keys	<ul style="list-style-type: none"> Pressing "Full Screen" key turns off the softkeys to maximize the graticule display area. Press the key again to restore the normal display. Window Control Keys select between single or multiple window displays. They zoom the current window to fill the data display, or change the currently selected window. They can be used to switch between the Help window navigation pane and the topic pane.
5	Enter and Arrow Keys	<p>The Enter key terminates data entry when either no unit of measure is needed, or you want to use the default unit.</p> <p>The arrow keys:</p> <ul style="list-style-type: none"> Increment and decrement the value of the current measurement selection. Navigate help topics. Navigate or make selections within Windows dialogs. Navigate within forms used for setting up measurements. Navigate within tables.
6	Help Key	Initiates a context-sensitive Help display for the current Mode. Once Help is accessed, pressing a front panel key brings up the help topic for that key function.
7	Return Key	Exits the current menu and returns to the previous menu. Has typical PC functionality.
8	Select/Space Key	Select is also the Space key and it has typical PC functionality. For example, in Windows dialogs, it selects files, checks and unchecks check box, and picks radio button choices. It opens a highlighted Help topic.
9	Tab Keys	Use these keys to move between fields in Windows dialogs.
11	Numeric Keypad	Enter a specific numeric value for the current function. Entries appear on the upper left of the display, in the measurement information area.
12	Back Space Keys	Press this key to delete the previous character when entering alphanumeric information. It also works as the Back key in Help and Explorer windows.
13	Delete Key	Press this key to delete files or to perform other deletion tasks.

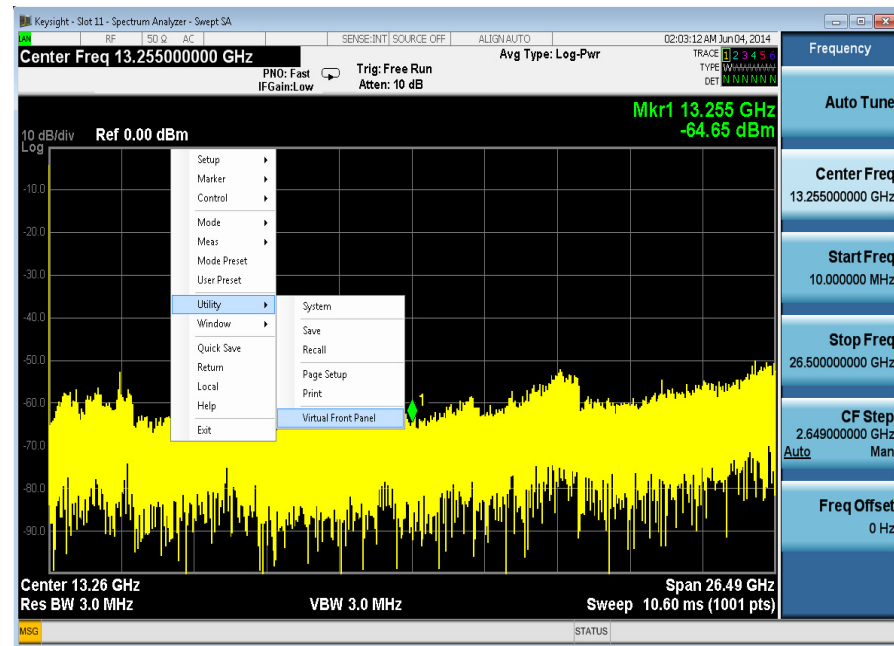
Item		Description
#	Name	
14	Local/Cancel (Esc) Key	<p>If you are in remote operation, Local:</p> <ul style="list-style-type: none"> " Returns instrument control from remote back to local (the front panel). " Turns the display on (if it was turned off for remote operation). " Can be used to clear errors. (Press the key once to return to local control, and a second time to clear error message line.) <p>If you have not already pressed the units or Enter key, Cancel exits the currently selected function without changing its value.</p> <ul style="list-style-type: none"> " Esc works the same as it does on a PC keyboard. It: " Exits Windows dialogs " Clears errors " Aborts printing " Cancels operations.
15	Marker Keys	Markers are often available for a measurement to measure a very specific point/segment of data within the range of the current measurement data.
15	Utility Keys	<p>These keys control system-wide functionality such as:</p> <ul style="list-style-type: none"> ▪ instrument presets ▪ instrument configuration information and I/O setup ▪ printer setup and printing ▪ file management, save and recall

Using Right-Click Menu

Besides the virtual front panel, you can also access the keys from Right-Click menu. If you plug in a mouse and right-click on the analyzer screen, a menu will appear as below:

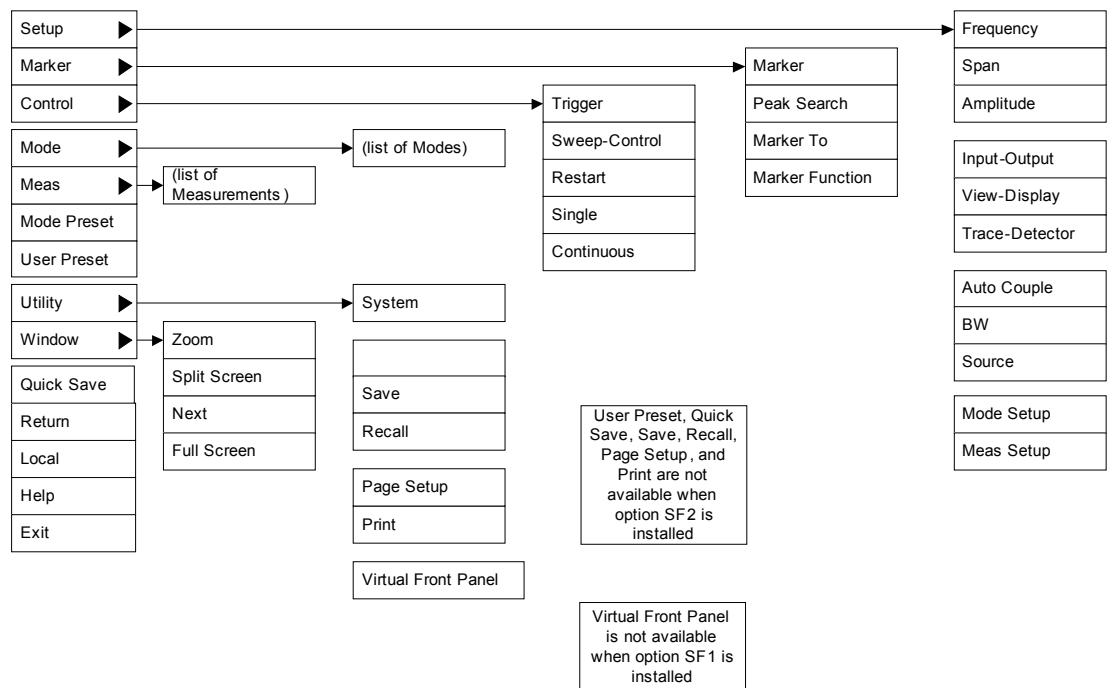


Placing the mouse on one of the rows marked with a right arrow symbol will cause that row to expand, as for example below where the mouse is hovered over the "Utility" row:



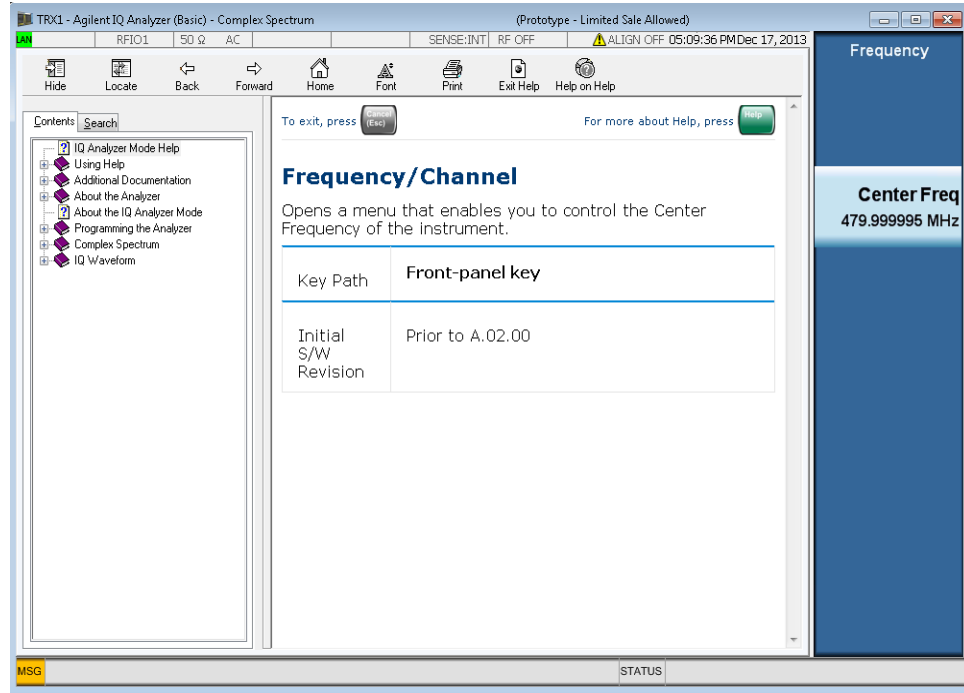
Running Modular SA application Using Right-Click Menu

This method can be used to access any of the front-panel keys by using a mouse. The array of keys thus available is shown below:



Using the Interactive Help System

To use the interactive help system of SA applications, please click **Help** key on the Virtual Front Panel, or right click on your mouse and select **Help** from the Right-Click menu, the help screen will be displayed as following:



You can navigate to any menu and by clicking on soft key, the help information of the soft key setting will be shown on the help screen.

You can also use your mouse to navigate the help content from the tree view on the left panel.

Press Esc to exit the help information screen.

Navigating the Signal Analyzer Application by keyboard

Besides using a mouse to navigate the application software, you can also use the keyboard connected with the controller to perform the operations. This is also useful for the user who is familiar with other X series Signal Analyzers. See following table for the key code commands.

key code commands:

Initiate the following function keys:	Press these keys on the controller keyboard:
AMPTD Y Scale	Ctrl+Shift+A
Auto Couple	Ctrl+Shift+C
BK Sp	Backspace
BW	Ctrl+Alt+B
Cancel (Esc)	Esc
Cont	Ctrl+Alt+C
Ctrl	Ctrl
Decrease Audio Volume	the Volume Control slider
Del	Delete
Down Arrow	Down Arrow
Enter	Enter (Return)
File	Ctrl+Shift+L
FREQ Channel	Ctrl+Shift+F
Full Screen	Ctrl+Shift+B
Help	F1
Increase Audio Volume	the Volume Control slider
Input/Output	Ctrl+Shift+O
Left Arrow	Left Arrow
Marker	Ctrl+Alt+K
Marker ->	Ctrl+Alt+N
Marker Function	Ctrl+Alt+F
Meas	Ctrl+Alt+M
Meas Setup	Ctrl+Alt+E
Menu (Alt)	Alt
Mode	Ctrl+Shift+M
Mode Preset	Ctrl+M
Mode Setup	Ctrl+Shift+E

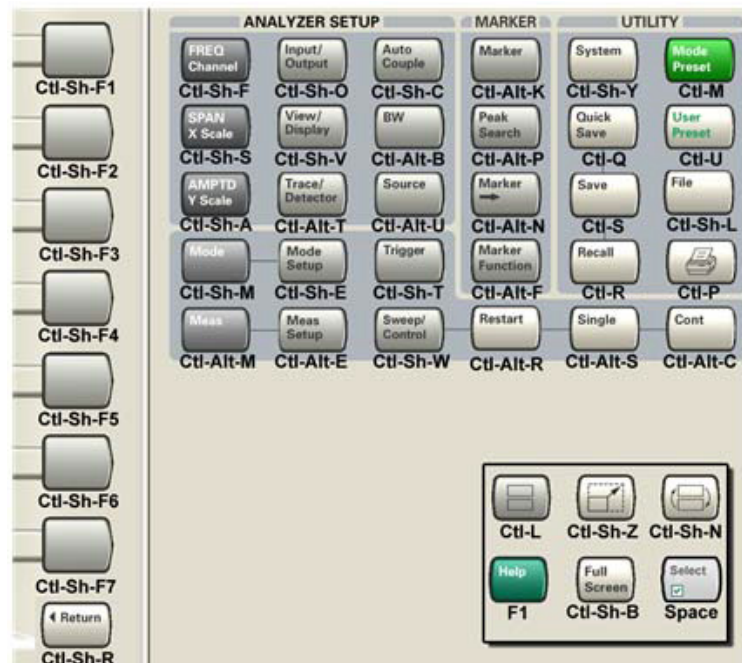
key code commands:

Initiate the following function keys:	Press these keys on the controller keyboard:
Mute	the Mute checkbox under the Volume Control
Next Window	Ctrl+Shift+N
Peak Search	Ctrl+Alt+P
Print	Ctrl+P
Quick Save	Ctrl+Q
Recall	Ctrl+R
Restart	Ctrl+Alt+R
Return	Ctrl+Shift+R
Right Arrow	Right Arrow
Save	Ctrl+S
Select	Space Bar
Single	Ctrl+Alt+S
Softkey 1	Ctrl+Shift+F1
Softkey 2	Ctrl+Shift+F2
Softkey 3	Ctrl+Shift+F3
Softkey 4	Ctrl+Shift+F4
Softkey 5	Ctrl+Shift+F5
Softkey 6	Ctrl+Shift+F6
Softkey 7	Ctrl+Shift+F7
Source	Ctrl+Alt+U
SPAN X Scale	Ctrl+Shift+S
Split Screen	Ctrl+L
Sweep/Control	Ctrl+Shift+W
System	Ctrl+Shift+Y
Tab	Tab
Trace/Detector	Ctrl+Alt+T
Trigger	Ctrl+Shift+T
Up Arrow	Up Arrow
User Preset	Ctrl+U
View/Display	Ctrl+Shift+V
Zoom	Ctrl+Shift+Z

key code commands:

Initiate the following function keys:	Press these keys on the controller keyboard:
1	1
2	2
3	3
4	4
5	5
6	6
7	7
8	8
9	9
-	Use the - key to enter a negative value, as appropriate
. (Decimal Point)	. (Period)
0 (Zero)	0 (Zero)

Following figure shows the combination keyboard keys for bench top X series Signal Analyzers front panel keys. They can also be used when you are operating the same functions on CXA-m Modular SA applications.



TCP/IP Address Configuration

CXA-m signal analyzer support the TCP/IP connection standards for LAN and HiSLIP (High-Speed LAN Instrument Protocol) instruments.

In general, modern driver technology hides the details of the hardware connection from the programmer, so your instrument's actual hardware connection is unlikely to have any significant effect on the optimal choice of programming tool, language or ADE.

There are two different connection configuration to control a CXA-m signal analyzer in chassis.

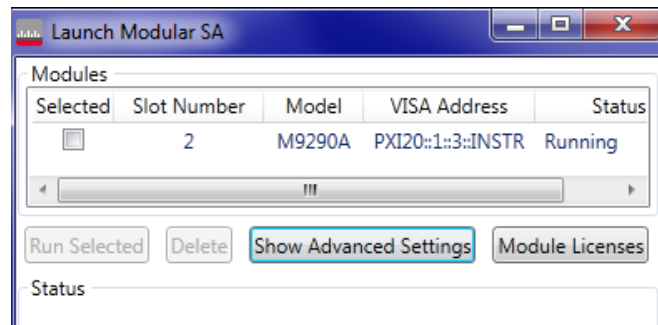
Local Control - The controller is a modular installed in the chassis with CXA-m signal analyzer or the controller is a PC and there is not any controller module installed in chassis. Both of the two connections use the PCI-PCI bridge for data communication.

Remote Control - The controller is a modular installed in the chassis and an external PC controls the CXA-m signal analyzer via LAN connection as a remote controller.

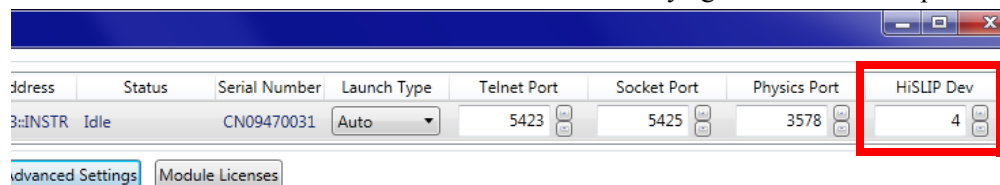
Address Setting in Local Control

Please refer to the procedures below to set the TCP/IP address in local control.

1. Run LaunchModularSA.exe in controller. The pop-up window is shown as below.

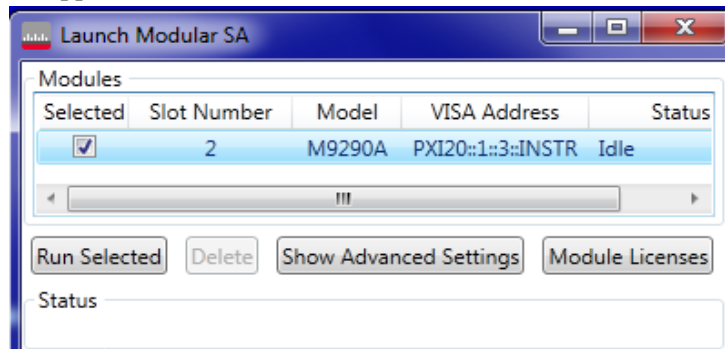


2. Click Show Advanced Settings. For this analyzer, the "HiSLIP Dev" value is 4. This value will be used to set the remote name in Keysight Connection Expert.

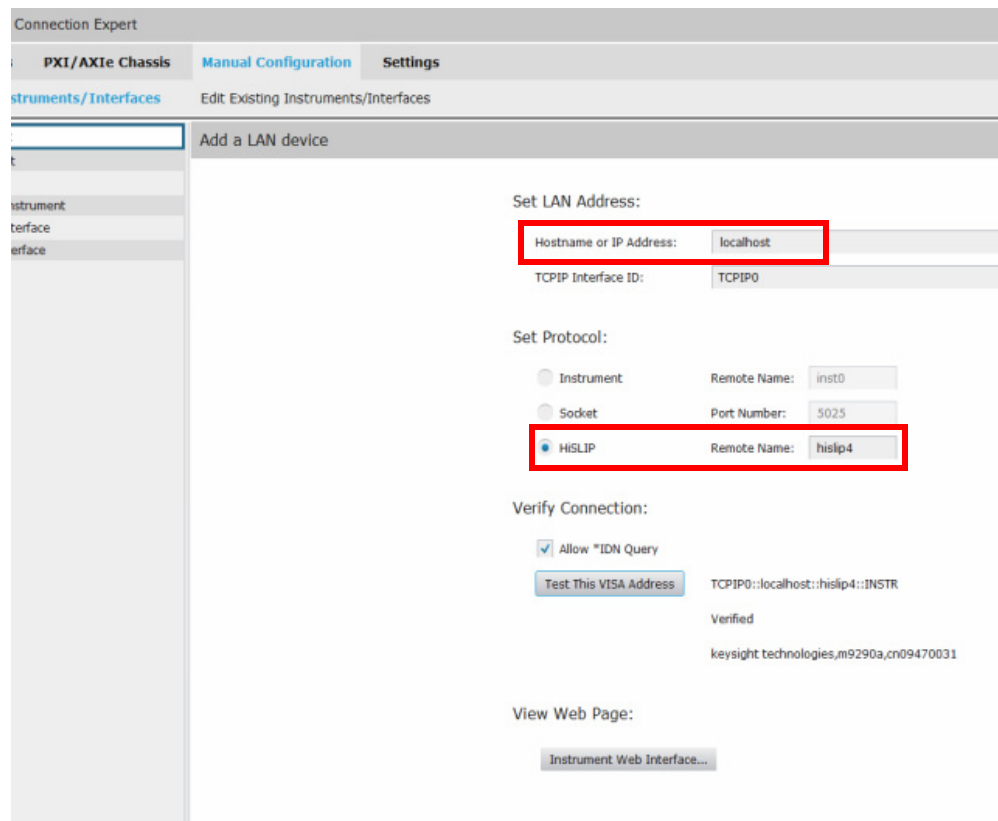


Running Modular SA application TCP/IP Address Configuration

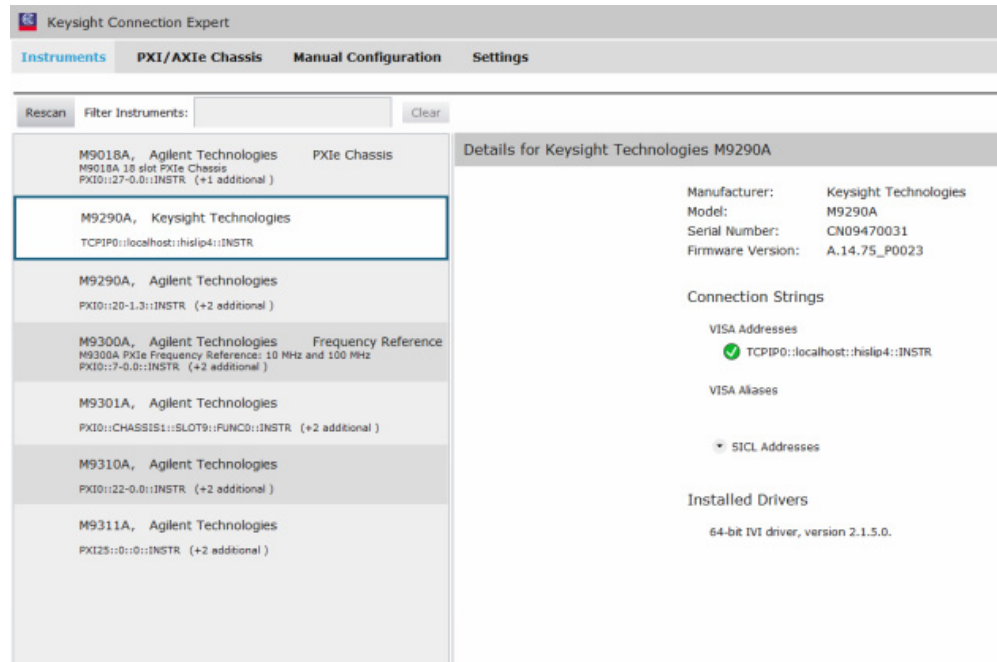
3. Check the box named **Selected** and click **Run Selected** to run the Modular SA application.



4. Run Keysight Connection Expert. Click **Manual Configuration**.
 - Set **Hostname or IP Address** as **localhost**.
 - Set **Protocol** to **HiSLIP** and set **Remote Name** to **hislip4**
 - Check the box named **Allow *IDN Query** and click **Test This VISA Address** to verify the connection.
 - Click **Accept** as a terminator for the settings



- Click Instruments on the tool bar. You will find the M9290A and its TCP/IP address is TCPIP0::localhost::hislip4::INSTR. This address is used by the Automatic Test System run in controller or external PC which communicate with M9290A by PCIe-PCIe bridge.



Address Setting in Remote Control

For Remote control, you need know the controller's IP address. Please press **System > Show > System** in Modular SA Virtual Front Panel to get the IP address of the controller.

Please follow the step 4 and step 5 of "**Address Setting in Local Control**" to set the address. The only difference is to set the Hostname or IP Address as xxx.xxx.xxx.xxx (controller's IP address) rather than localhost.

6 Troubleshooting

This chapter details some basic steps that may solve any problems you are experiencing with the signal analyzer.

["Check the Basics" on page 70](#)

["Returning an Analyzer for Service" on page 72](#)

WARNING

No operator serviceable parts inside. Refer servicing to qualified personnel. To prevent electrical shock do not remove covers.

Check the Basics

- o Is there power at the receptacle?
- o Is the analyzer turned on? Check to see if the green LED beside the power switch is on. Also, listen for internal fan noise to determine if the analyzer cooling fans are running.
- o If other equipment, cables, and connectors are being used with your signal analyzer, make sure they are connected properly and operating correctly.
- o Is the Measurement Application running? If not, there is a software launch shortcut/icon on the desktop.
- o Does the instrument application have the focus? (That is, is the blue window banner highlighted?) If not, move focus to the application with Alt-Tab.
- o Review the measurement procedures being performed when the problem first appeared. Are all of the settings correct?
- o If the analyzer is not functioning as expected, return the analyzer to a known state by pressing **Mode Preset**.

NOTE

Some analyzer settings are not affected by a Preset. If you wish to reset the analyzer settings, press **System, Power On, Restore Power On Defaults**.

- o Is the measurement being performed, and the results that are expected, within the specifications and capabilities of the analyzer?

Refer to the specifications guide for your analyzer.

http://www.keysight.com/find/cxa-m_specifications

Technical manual pdf files are available on the documentation DVD provided with the analyzer, and on the Keysight website:

http://www.keysight.com/find/cxa-m_manuals

- o If the analyzer is not communicating via the LAN connection, check for the presence of blinking yellow LEDs on the rear panel LAN connector. If the ACT LED is not blinking, check the LAN cable and LAN integrity.
- o To meet specifications, the analyzer must be aligned. Either the Auto Align (On) feature must be selected (press **System, Alignments, Auto Align, Normal**), or the analyzer must be manually aligned.
- o Perform an Alignment. Press **System, Alignments, Align Now, All**.
- o If the previously performed alignments did not resolve the problem, press **System, Alignments, Restore Align Defaults**. Then press **System, Alignments, Align Now, All**.

- o If the analyzer exhibits large amplitude errors (> 10 dB) especially at frequencies above 10 GHz, the RF preselector might not be properly centered. Press **Peak Search**, **AMPTD Y-Scale**, **Presel Center**. If the signal amplitude error is corrected, the preselector characterization should be performed. Press **System**, **Alignments**, **More 1 of 2**, **Advanced**, **Characterize Preselector**. The characterization will take several minutes and the analyzer must not be interrupted during this time. If the analyzer is interrupted during the characterization process, the characterization data will be destroyed and it will be necessary to perform the entire process again.
- o Is the analyzer displaying an error message? If so, refer to the *Instrument Messages Guide*.
- o Check if the external frequency reference is selected but not available. Verify that it is selected by pressing **Input/Output**, **Freq Ref In**. If **External** is selected, changing the setting to **Sense** allows the analyzer to sense the presence of an external reference and use it only if it is available. The frequency of the reference should be set correctly.
- o If you are using a Windows program other than the instrument application, you may notice it running slow. Place the instrument application in single sweep/measurement.

Returning an Analyzer for Service

Calling Keysight Technologies

Keysight Technologies has offices around the world to provide you with complete support for your analyzer. To obtain servicing information or to order replacement parts, contact the nearest Keysight Technologies office listed below. In any correspondence or telephone conversations, refer to your analyzer by its product number, full serial number, and software revision.

Press **System**, **Show**, **System**, and the product number, serial number, and software revision information will be displayed on your analyzer screen. A serial number label is also attached to the rear panel of the analyzer.

Locations for Keysight Technologies

Online assistance: <http://www.keysight.com/find/assist>

Americas

Canada 1 877 894 4414	Latin America (305) 269 7500	United States 1 800 829 4444
--------------------------	---------------------------------	---------------------------------

Asia Pacific

Australia 1 800 629 485	China 800 810 0189	Hong Kong 800 938 693
India 1 800 112 929	Japan 0 120 (421) 345	Korea 080 769 0800
Malaysia 1 800 888 848	Singapore 1 800 375 8100	Taiwan 0800 047 866
Thailand 1 800226 008		

Europe & Middle East

Austria 43 (0) 1 360 277 1571	Belgium 32 (0) 2 404 93 40	Denmark 45 70 13 15 15
Finland 358 (0) 10 855 2100	France 0825 010 700* *0.125 Euros/minute	Germany 49 (0) 7031 464 6333
Ireland 1890 924 204	Israel 972-3-9288-504/544	Italy 39 02 92 60 8484
Netherlands 31 (0) 20 547 2111	Spain 34 (91) 631 3300	Sweden 0200-88 22 55
Switzerland 0800 80 53 53	United Kingdom 44 (0) 118 9276201	

Other European Countries: <http://www.keysight.com/find/contactus>

Read the Warranty

The warranty for your analyzer is in the front of your Specifications Guide. Please read it and become familiar with its terms.

If your analyzer is covered by a separate maintenance agreement, please be familiar with its terms.

Service Options

Keysight Technologies offers several optional maintenance plans to service your analyzer after the warranty has expired. Call your Keysight Technologies office for full details.

If you want to service the analyzer yourself after the warranty expires, you can purchase the service documentation that provides all necessary test and maintenance information.

www.keysight.com

© Keysight Technologies, Inc. 2014

Printed in China
October 2014



M9290-90007