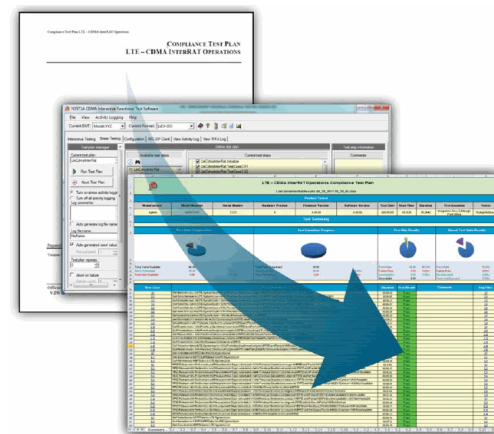


# Agilent IFT Scripts for TD-LTE Terminal NS-IOT (N5978A-1FP)



## Installation Guide



**Agilent Technologies**

# Notices

© Agilent Technologies, Inc. 2013

No part of this manual may be reproduced in any form or by any means (including electronic storage and retrieval or translation into a foreign language) without prior agreement and written consent from Agilent Technologies, Inc. as governed by United States and international copyright laws.

## Warranty

The material contained in this document is provided “as is,” and is subject to being changed, without notice, in future editions. Further, to the maximum extent permitted by applicable law, Agilent disclaims all warranties, either express or implied, with regard to this manual and any information contained herein, including but not limited to the implied warranties of merchantability and fitness for a particular purpose. Agilent shall not be liable for errors or for incidental or consequential damages in connection with the furnishing, use, or performance of this document or of any information contained herein. Should Agilent and the user have a separate written agreement with warranty terms covering the material in this document that conflict with these terms, the warranty terms in the separate agreement shall control.

## Statement of Compliance

This product has been designed and tested in accordance with accepted industry standards, and has been supplied in a safe condition. The documentation contains information and warnings that must be followed by the user to ensure safe operation and to maintain the product in a safe condition.

## Manual Part Number

N5978-90001

## Edition

December 2013  
Software Version 1.0.0.0

## Technology Licenses

The hardware and/or software described in this document are furnished under a license and may be used or copied only in accordance with the terms of such license.

## Restricted Rights Legend

If software is for use in the performance of a U.S. Government prime contract or subcontract, Software is delivered and licensed as “Commercial computer software” as defined in DFAR 252.227-7014 (June 1995), or as a “commercial item” as defined in FAR 2.101(a) or as “Restricted computer software” as defined in FAR 52.227-19 (June 1987) or any equivalent agency regulation or contract clause. Use, duplication or disclosure of Software is subject to Agilent Technologies’ standard commercial license terms, and non-DOD Departments and Agencies of the U.S. Government will receive no greater than Restricted Rights as defined in FAR 52.227-19(c)(1-2) (June 1987). U.S. Government users will receive no greater than Limited Rights as defined in FAR 52.227-14 (June 1987) or DFAR 252.227-7015 (b)(2) (November 1995), as applicable in any technical data.

## Safety Notices

The following general safety precautions must be observed during all phases of operation of this instrument. Failure to comply with these precautions or with specific warnings elsewhere in this manual violates safety standards of design, manufacture, and intended use of the instrument. Agilent Technologies Inc. assumes no liability for the customer’s failure to comply with these requirements.

## CAUTION

A CAUTION notice denotes a hazard. It calls attention to an operating procedure, practice, or the like that, if not correctly performed or adhered to, could result in damage to the product or loss of important data. Do not proceed beyond a CAUTION notice until the indicated conditions are fully understood and met.

## WARNING

A WARNING notice denotes a hazard. It calls attention to an operating procedure, practice, or the like that, if not correctly performed or adhered to, could result in personal injury or death. Do not proceed beyond a WARNING notice until the indicated conditions are fully understood and met.

## Where to Find the Latest Information

Documentation is updated periodically. For the latest information about the Agilent Technologies N5978A-1FP IFT product, consult the following website: [www.agilent.com/find/N5978A](http://www.agilent.com/find/N5978A).

For the latest information about the Agilent Technologies E6621A PXT product, including operation and application information and product and accessory information, see the following website: [www.agilent.com/find/pxt](http://www.agilent.com/find/pxt).

## Is Your Product Software Up-to-Date?

Periodically, Agilent releases software updates to incorporate product enhancements, and fix known defects.

All N5978A software revisions are available from [www.agilent.com/find/softwaremanager](http://www.agilent.com/find/softwaremanager), and require a valid N5978AS Software and Technical Support Contract (STSC).

<b>NOTE</b>	In general, all Agilent E6621A PXT software products are available for download from <a href="http://www.agilent.com/find/softwaremanager">www.agilent.com/find/softwaremanager</a> .
-------------	---

<b>IMPORTANT</b>	<p>To obtain the most current software for the products listed, you must also have:</p> <ul style="list-style-type: none"><li>• Agilent Software and Technical Support Contract (STSC) for the Agilent E6621A</li><li>• Agilent Software and Technical Support Contract (STSC) for the Agilent N5978A</li></ul>
------------------	---

## Table of Contents

<b>1</b>	<b>Introduction .....</b>	<b>2</b>
<b>2</b>	<b>Overview of System Configuration and Components .....</b>	<b>3</b>
	Wireless test set and PC requirements.....	3
	IFT TD-LTE terminal NS-IOT test configuration .....	3
<b>3</b>	<b>Installation .....</b>	<b>4</b>
	File locations .....	4
	Location of User Data .....	4
	Hardware and Software Configuration .....	4
	Back-up previous IFT files.....	6
	IFT server PC .....	6
	Install .....	6
	IFT Client PC* .....	9
	Install .....	9
<b>4</b>	<b>Licensing .....</b>	<b>11</b>
<b>5</b>	<b>Setting up the System .....</b>	<b>12</b>
	Setup procedure .....	12
	Setting the E-EPC-E IP Addresses .....	15
	Setting up the DUTs.....	16
<b>6</b>	<b>Service and Support .....</b>	<b>20</b>
	Calling Agilent Technologies.....	20
	Software and Technical Support Contracts .....	20
	Web-based support .....	20
	E-mail support .....	20
	Locations for Agilent Technologies.....	21

# Agilent N5978A-1FP IFT Scripts for TD-LTE Terminal NS-IOT Installation Guide

## 1 Introduction

Welcome to the **Agilent N5978A-1FP IFT Scripts for TD-LTE Terminal NS-IOT Installation Guide**. The purpose of this guide is to provide you with installation and licensing instructions for the Agilent N5978A-1FP.

In this book, you'll find:

[Overview of System Configuration and Components](#)

[Installation](#)

[Licensing](#)

**Error! Reference source not found.**

[Setting up the System](#)

[Service and Support](#)

## 2 Overview of System Configuration and Components

This section provides an overview of the components required to install and use the Agilent N5978A-1FP software.

### ***Wireless test set and PC requirements***

Refer to the N5978A-1FP release notes located here: [www.agilent.com/find/N5978A](http://www.agilent.com/find/N5978A).

### ***IFT TD-LTE terminal NS-IOT test configuration***

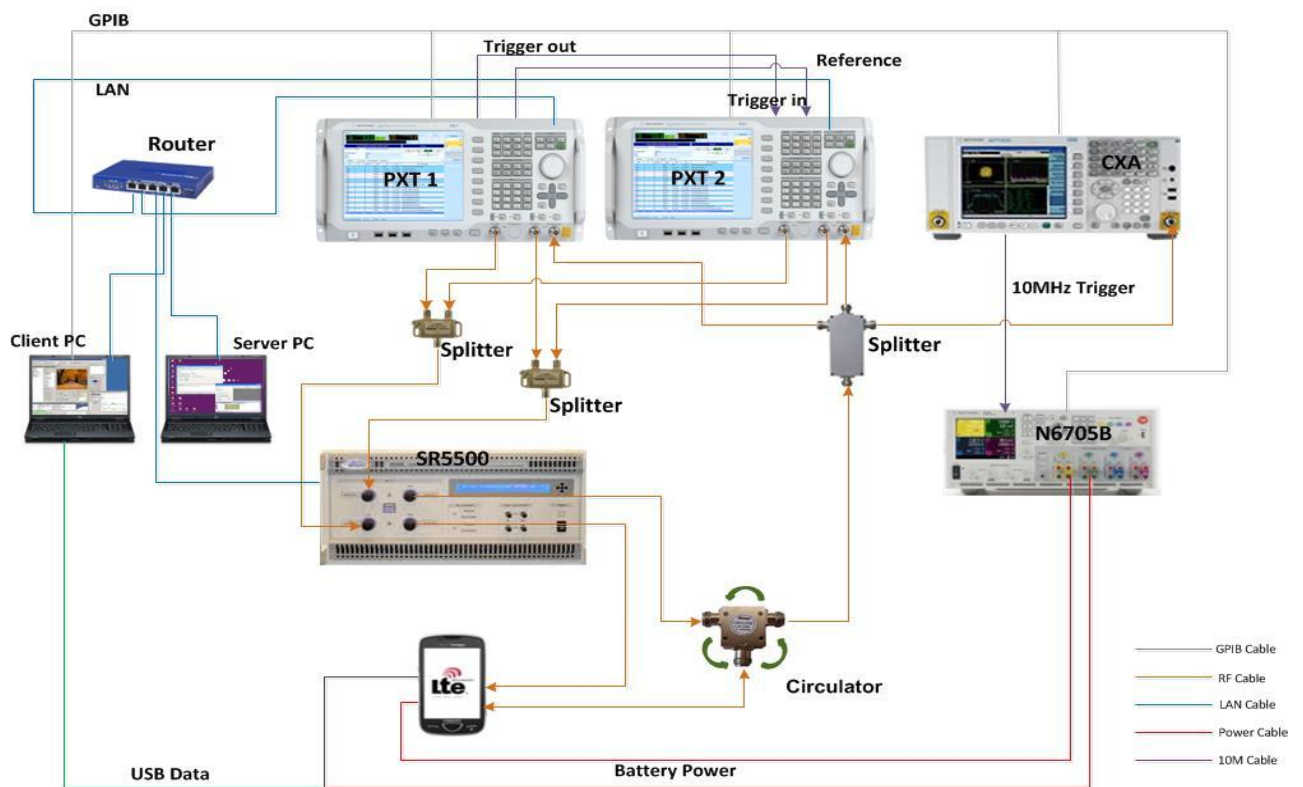


Figure 2-1. IFT TD-LTE terminal NS-IOT test system

### 3 Installation

#### **File locations**

##### **Location of User Data**

For Server PC:

Windows 7: C:\Program Files (x86)\Agilent\N597X\

Windows XP: C:\Program Files \Agilent\N597X\

For Client PC:

Windows XP: C:\Users\Public\Documents\Agilent\N5972A\TestData\N5978A

<b>NOTE</b>	Since the above directory paths are different, this document will reference these "User Data" locations like this: <OS Public Agilent>. Rename the six User Data files separately as ULThroughput1.dat, ULThroughput2.dat.....ULThroughput6.dat.
-------------	--

#### **Hardware and Software Configuration**

All hardware and software applications required for this product are available for download from these locations shown below. For "Instrument Software Requirements", see Table 4-1 on page [10](#).

**Table 3-1:** Hardware and software application requirements

System Component	Software Model and License	Description	Version or later	Download Location
Client PC	N5978A-1FP	IFT automation scripts for TD-LTE terminal NS-IOT test plans (1FP = software license)	1.0	<a href="http://www.agilent.com/find/N5978A">www.agilent.com/find/N5978A</a>
	N5972A	IFT software	1.2	<a href="http://www.agilent.com/find/N5972A">www.agilent.com/find/N5972A</a>
	N6061A Protocol Logging	LTE protocol logging and analysis	6.4.1.0	<a href="http://www.agilent.com/find/softwaremanager">www.agilent.com/find/softwaremanager</a>
	N6062A (LTE Message Editor)	LTE message editor	6.4.1.0	
	E6584A (WPA)	Wireless protocol advisor (software)	A.10.01	<a href="http://www.agilent.com/find/E6584A">www.agilent.com/find/E6584A</a>
	Agilent IO	Instrument control	16.0	<a href="http://www.agilent.com/find/iosuite">www.agilent.com/find/iosuite</a>

## Agilent N5978A-1FP IFT Scripts for TD-LTE Terminal NS-IOT Installation Guide

	Libraries	(software)		
	MS Office Excel	Spreadsheet software	2007	<a href="http://www.microsoft.com">www.microsoft.com</a>
Server PC	N597X	PC server (software)	9.0	<a href="#">8960 Series 10 Software Downloads</a>
	E6966A-1FP	IMS-SIP server emulator	3.1	<a href="http://www.agilent.com/find/E6966A">www.agilent.com/find/E6966A</a>
	E6966A-2FP	IMS-SIP client emulator	3.0	

System Component	Software Model and License	Description	Version or later	Download Location
PXT (LTE)	E6621A	PXT wireless communication test set (hardware and software)	N/A	<a href="http://www.agilent.com/find/softwaremanager">www.agilent.com/find/softwaremanager</a>
	N6050A-8FP	LTE TDD base station emulation software (8FP = software license)	6.3	
	N6052A-1FP	LTE enhanced BSE and IP data test (1FP = software license)	6.3	
	EPC Restart Server <sup>2</sup>	Evolved packet core restart server (software)	N/A	<OS Public Agilent>\ N5972A\TestData\N5978A\Docs\EPCRestartServer
N6705B (DC power analyzer)	N6705B	DC power analyzer	1.0.0.2	<a href="http://www.agilent.com/find/N6705B">www.agilent.com/find/N6705B</a>
CXA	N9000A	Signal analyzer		
SR5500		Radio channel simulator	1.7	
USIM		Universal subscriber identification module (SIM)	N/A	Contact Agilent
Router		Router x1		
GPIO cards		GPIO card x2		
GPIO serial cables		GPIO serial cable x2		

### Table footnotes:

1. An active E6621A software and technical support contract (STSC) are required to access the software manager website (displayed above), together with the login credentials registered by you or your company for activation. See the section on licensing in the **Agilent PXT Wireless Communications Test Set Getting Started Guide** for instructions to activate your STSC.



## Agilent N5978A-1FP IFT Scripts for TD-LTE Terminal NS-IOT Installation Guide

2. EPC Restart Server can be installed as follows:
  - a. Copy files from IFT Client PC EPC Restart Server directory to PXT desktop
  - b. Create a shortcut to the EPC Restart Server.exe in C:\Documents and Settings\All Users\Start\Programs\Startup
  - c. Reboot or manually start the EPC Restart Server.exe program

### ***Back-up previous IFT files***

<b>IMPORTANT</b>	If an IFT Server or IFT Client PCs are already setup for use with other products, it is advisable to back up any files you wish to keep, before proceeding. See " <a href="#">Location of User Data</a> " section above to locate the files you need to back-up.
------------------	--

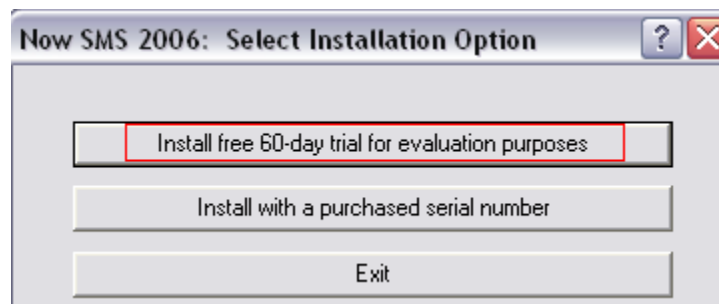
### ***IFT server PC***

#### **Install**

1. N597X  $\geq$  version A.09.00
2. E6966A-1FP IMS-SIP server  $\geq$  version 3.1
3. E6966A-2FP IMS-SIP client  $\geq$  version 3.0

After running the N597X\_Setup.exe installation program, you can follow the normal installation process to install N597X. But, there are several issues for you to note during the process.

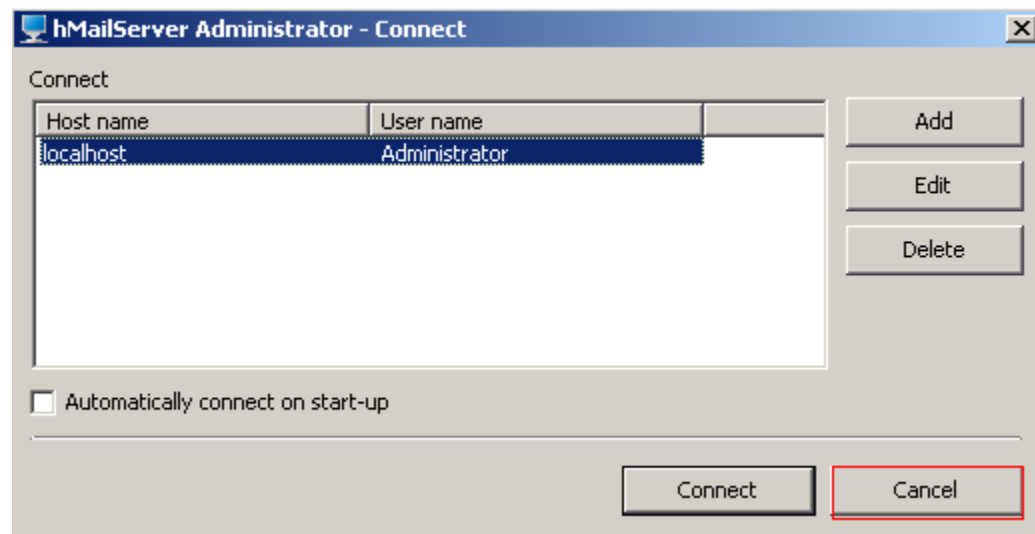
- 1) Select ***Install free 60-day trial for evaluation purposes*** when ***Now SMS 2006*** window appears.



- 2) Specify main password for hMailServer.

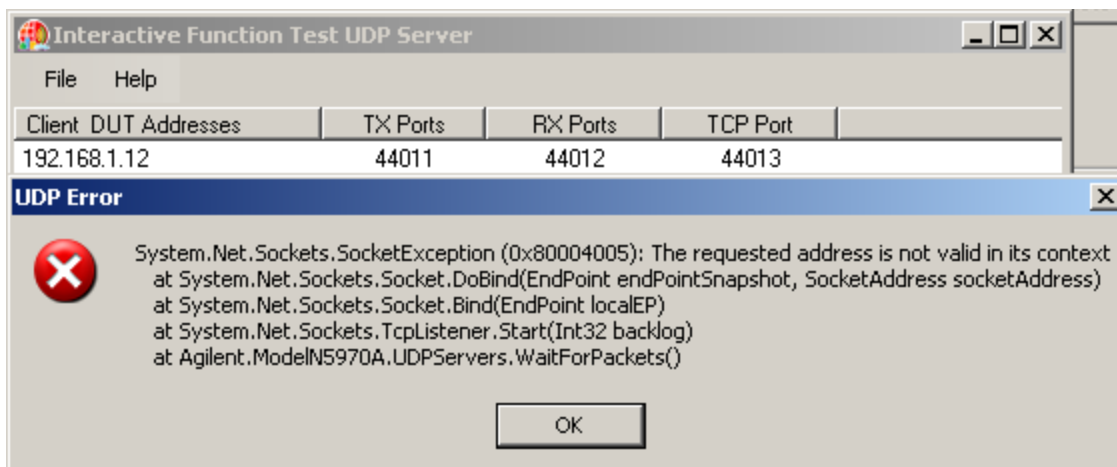


- 3) Select **Cancel** when **hMailServer Administrator** window appears.



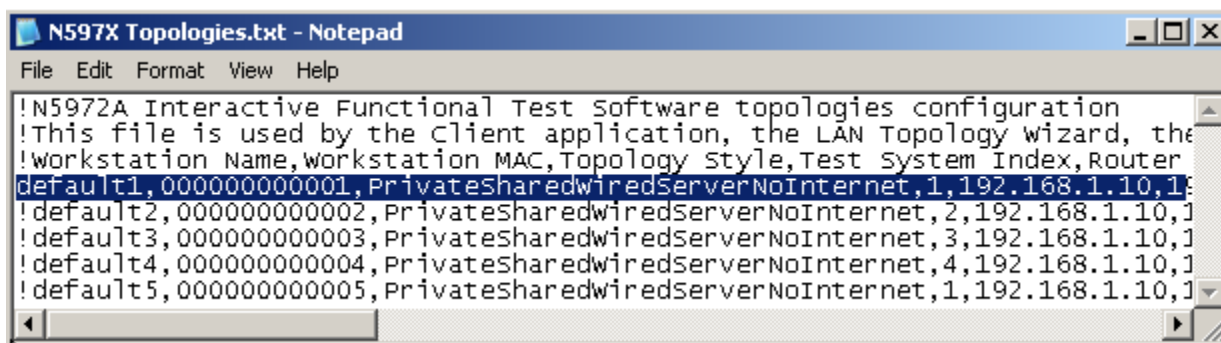
- 4) During the installation, an **UDP Error** window will appear,

## Agilent N5978A-1FP IFT Scripts for TD-LTE Terminal NS-IOT Installation Guide



Please follow the steps below to solve the UDP Error issue:

- Open the file N597X Topologies.txt from this location on the IFT Server C:\Program Files\Agilent\N597X\AppFiles



- Use “!” to disable the default 2, default 3, default 4, and default 5.
- Update the original configuration parameters of “Router IP, DUT IP, Test Set IP, Test Set IP Data” with the new value on the right of the arrow. See Table 3-2 for reference.

**Table 3-2:** Configuration parameters

Parameter	Value
Workstation Name	default1
Workstation MAC	000000000001
Topology Style	PrivateSharedWiredServerNoInternet
Test System Index	1
Router IP	192.168.1.10 → <u>192.168.1.1</u>
Workstation IP	192.168.1.11
DUT IP	192.168.1.12 → <u>192.168.1.51</u>

## Agilent N5978A-1FP IFT Scripts for TD-LTE Terminal NS-IOT Installation Guide

Test Set IP	192.168.1.13 → 192.168.1.60
Test Set IP Data	192.168.1.14 → 192.168.1.63
Bridge IP	192.168.1.19
Server IP	192.168.2.230
Server Bridge IP	192.168.1.239
MMS From DUT TCP Port	43594
MMS From DUT TO Address	1011
UDP TX Port	44011
UDP RX Port	44012
UDP TCP Port	44013

- 5) Be sure to select **Always connect** on FileZilla after completing the installation.
- 6) Find a file with the size larger than 2 GB and rename it as **throughput.dat**. Then copy 6 files to the directory C:\Program Files\Agilent\N597X\FTPFiles on the Server PC and rename the six User Data files separately as DLThroughput1.dat, DLThroughput2.dat.....DLThroughput6.dat

<b>IMPORTANT</b>	<p>If you are going to upgrade N597X, uninstall the old version you've installed first:</p> <ol style="list-style-type: none"> <li>1. Open the Control Panel from the Start Menu and select <b>Add/Remove Programs</b>.</li> <li>2. Locate <b>Agilent N597X Server, NowSMS/MMS Gateway, Filezilla Server, hMailServer 4.4.3-B285, Apache HTTP Server 2.0.59</b> from the <b>Add/Remove Programs</b> window and select <b>Remove</b>, to uninstall Agilent N597X Server, NowSMS, Filezillam hMailServer, and Apache separately.</li> </ol>
------------------	---

### **IFT Client PC\***

#### **Install**

1. OS Windows XP system
2. MS Office Excel ≥ version 2007
3. WPA ≥ version A.10.01
4. Agilent IO Libraries ≥ version 16.0
5. N5972A ≥ version 1.2.1\*
6. N5978A-1FP ≥ version 1.0.0.0
7. N5978AS STSCs
8. N6061A ≥version 6.4.1.0
9. N6062A ≥version 6.4.1.0.
10. Create big files for throughput test:

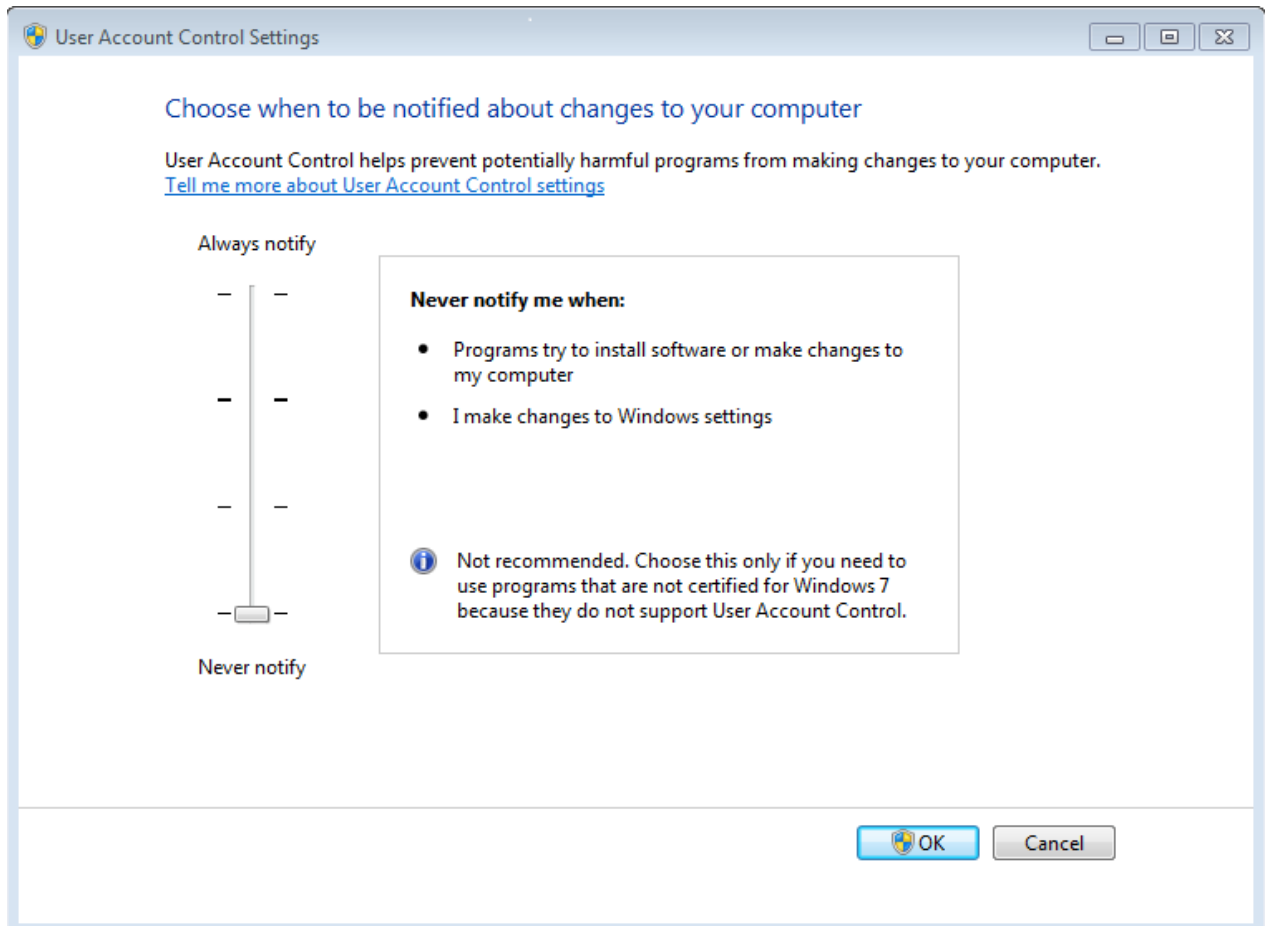
## Agilent N5978A-1FP IFT Scripts for TD-LTE Terminal NS-IOT Installation Guide

Find a file with the size larger than 1 GB and copy six files to the path”

C:\Users\Public\Documents\Agilent\N5972A\TestData\N5978A\Result\”

Rename the files separately as ULThroughput1.dat, ULThroughput2.dat, ULThroughput3.dat, ULThroughput4.dat, ULThroughput5.dat, and ULThroughput6.dat

11. Copy state folder to “My Documents/sa/state folder” of MXA/CXA12. Shut down firewall and antivirus. Turn down the User Account Control Settings when using windows7 OS.



13. Add a persistent route by the Command prompt of windows. Type “ROUTE -P ADD 192.168.1.60 MASK 255.255.255.255 192.168.1.11” and then press “enter”. You can check the route by pressing command “ROUTE PRINT”.

\* When installing the N5972A on Client PCs using a Windows 7 (64 bit) operating system, verify that **Microsoft .NET Framework 3.5.1** feature is turned ON. For instructions to ensure this is set correctly, refer to **Error! Reference source not found.** on page [Error! Bookmark not defined.](#)

<b>NOTE</b>	During this installation, when you are instructed to select a LAN connection, choose “LAN” and <b>NOT</b> “WLAN”.
-------------	---

## 4 Licensing

When you purchase the N5978A-1FP license, you receive a “License Entitlement Certificate”. Follow the instructions on this certificate to redeem your license keys for these products.

NOTE	N5978A-1FP is licensed using a soft-key installed on the Client PC. You do not need a license for the N5972A as this is automatically licensed by the presence of a valid N5978A license.
------	---

## 5 Setting up the System

**Table 5-1:** Instrument software application requirements

Cell	Product	Description	Version
E6621A PXT (LTE)	N6050A-8FP	LTE-TDD base station emulation	
	N6052A-1FP	LTE enhanced BSE and IP data test	
CXA	N9000A	Signal analyzer	
SR5500		Radio channel simulator	1.7
N6705B	N6705B	DC power Analyzer	1.0.0.2

### Setup procedure

<b>NOTE</b>	When discussing E6621A PXT key paths within tables or text, instrument front-panel keys are represented in <b>bold</b> ; softkeys appear in <b><i>bold, italics</i></b> .
-------------	---

1. Connect all components as shown in Figure 2-1, ensuring all wireless test sets are loaded with the appropriate software described in Table 4-1.
2. Ensure all components are set to the IP/GPIB addresses shown in Table 4-2.
3. Set the PXT to TCP/IP for remote control by selecting **Config > Network Setup > Remote Ctrl Setup > TCP/IP > Apply**.

**Table 5-2:** Component IP/GPIB addresses

Component	IP		Subnet Mask	Gateway	GPIB Address
IFT Client PC	192.168.1.11		255.255.255.0	192.168.1.1	
IFT Server PC	192.168.2.230		255.255.255.0	192.168.1.1	
PXT <sup>1</sup> (LTE)	192.168.1.60		255.255.255.0	192.168.1.1	9
PXT <sup>2</sup> (LTE)	192.168.1.63		255.255.255.0	192.168.1.1	10
CXA <sup>2</sup>	192.168.1.64		255.255.255.0	192.168.1.1	Interface : 0 Address : 18
SR5500	192.168.1.7		255.255.255.0	192.168.1.1	
N6705B <sup>2</sup>					Interface : 0 Address : 5
Router	WLAN IP	192.168.2.1	255.255.255.0	192.168.2.1	

## Agilent N5978A-1FP IFT Scripts for TD-LTE Terminal NS-IOT Installation Guide

	LAN IP	192.168.1.1		192.168.1.1	
E-EPC-E	See “ <b>Setting the E-EPC-E IP Addresses</b> ” on page <a href="#">15</a> to configure these settings.				
UE	See “ <b>Setting Up the UEs</b> ” on page <a href="#">15</a> to configure these settings.				

### Table footnotes:

1. The actual setting is “IP” and is part of the **TCP/IP Setup** menu. Please select **Config > Network Setup > IP Setup** to access this menu. Make your changes and then select **OK**.
2. Set the N6705B and CXA to GPIB Card to 0 via the GPIB cable.

4. Copy the E6621A PXT scenario files

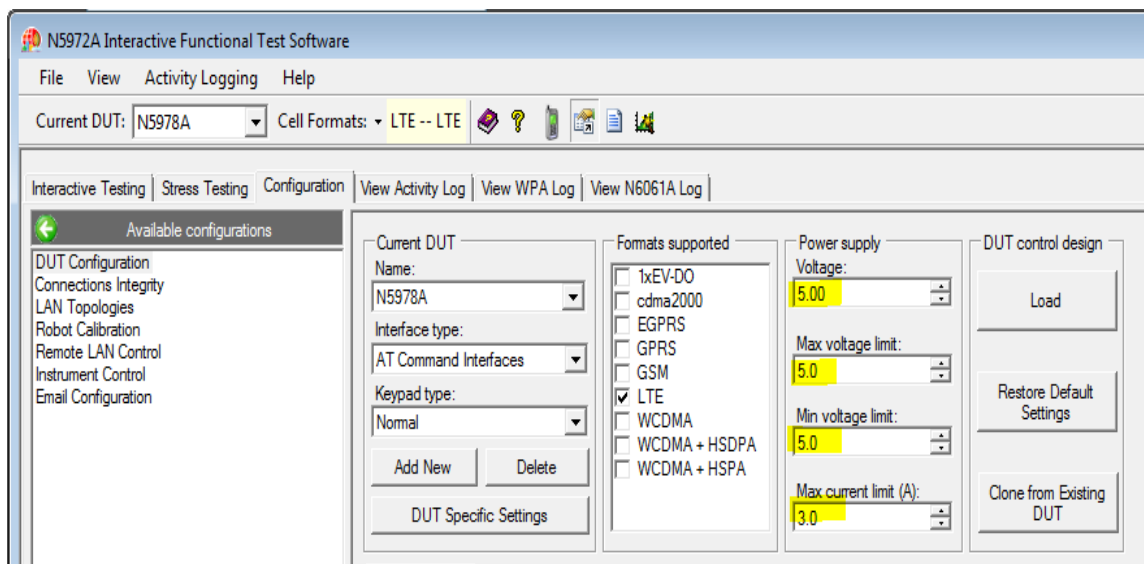
from this location on the IFT Client PC:

<OS Public Agilent>\N5972A\TestData\N5978A\Docs\Senariofiles

to this location on the PXT (LTE):

D:\Program Files\Agilent\E6621A\LTE-Scenario

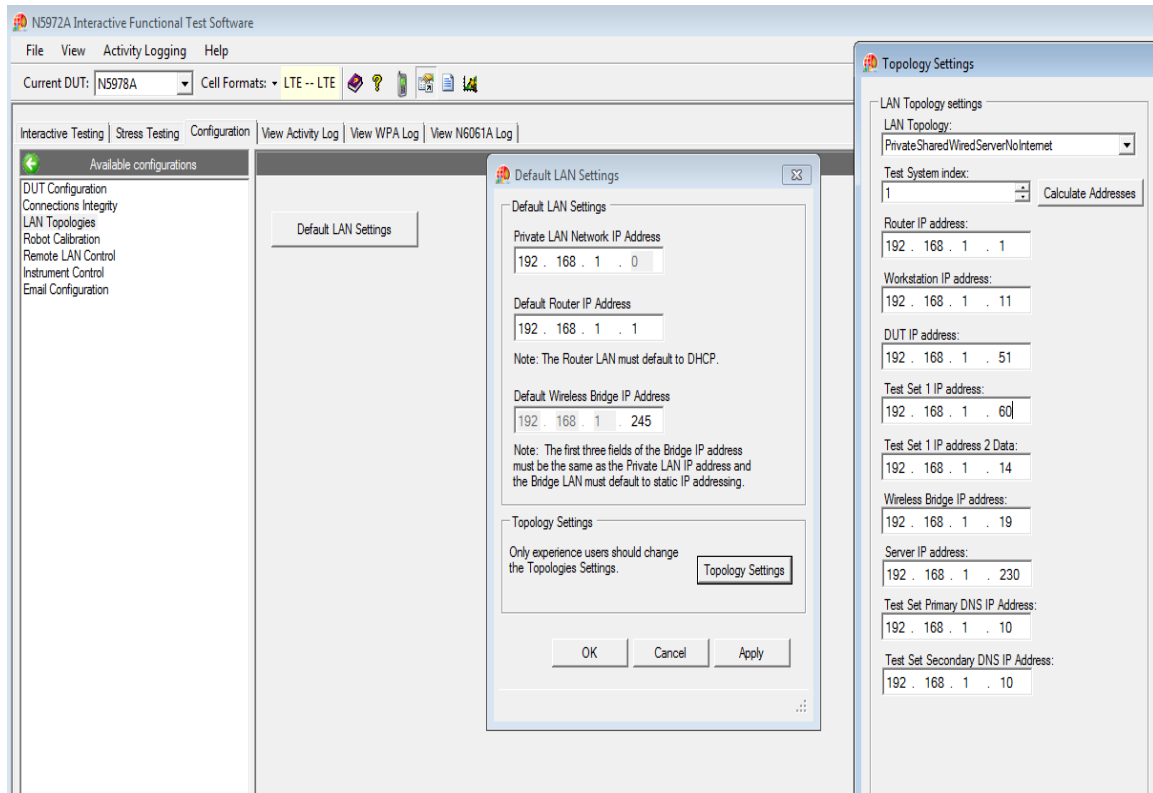
5. Set alternate source voltage in N6705B Battery Profile
6. Launch N5978A on the IFT Client PC.
7. Set the power supply voltage:



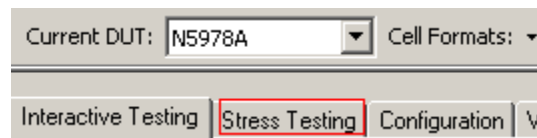
8. N5978A IP setting via LAN Topologies->Default LAN Settings-> Topologies Settings:



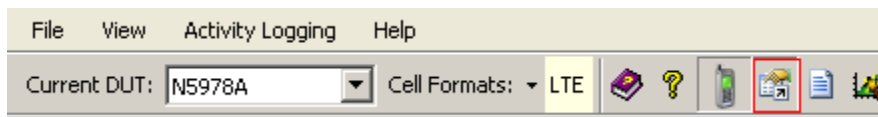
## Agilent N5978A-1FP IFT Scripts for TD-LTE Terminal NS-IOT Installation Guide



9. Select the **Stress Testing** tab in the main IFT application.



10. Display the N5978A Scripting Tool by double-clicking the icon outlined in red below.



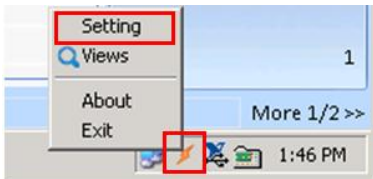
11. "Run" the test script to ensure that everything is configured correctly (on the IFT Client PC).

<p><b>CAUTION</b></p>	<p>Any change you make to the scripts <b><u>WILL</u></b> violate conformance to the Compliance Test Plan. Before making any changes to a script, you should make a copy of the original script so that it can be recovered.</p> <p><i>If you make any changes to a script, the original script <b><u>MUST</u></b> be recovered to restore conformance to the Compliance Test Plan.</i></p>
-----------------------	--

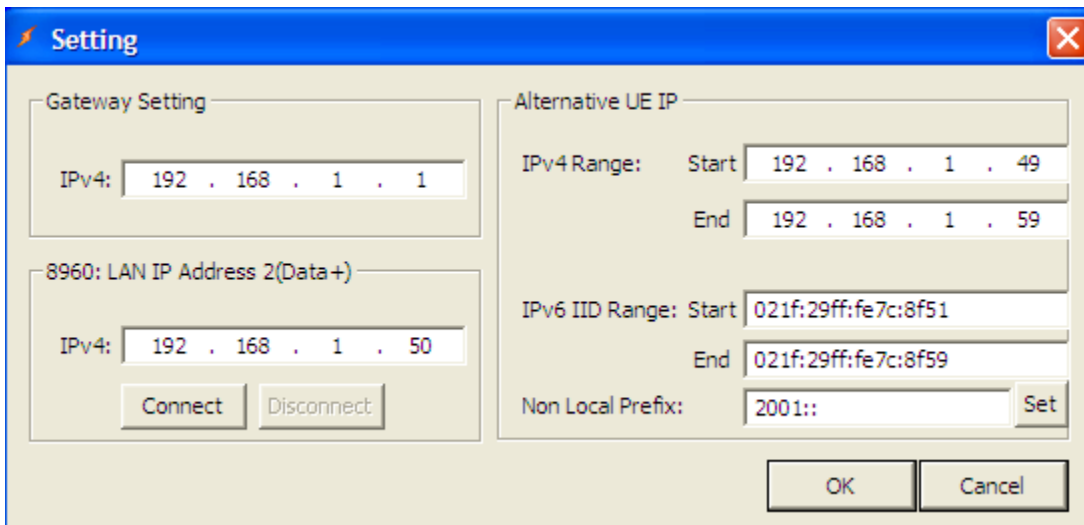
## Setting the E-EPC-E IP Addresses

<b>NOTE</b>	You will need to plug in a USB mouse and keyboard to the PXT in order to setup the E-EPC-E (Embedded-Evolved Packet Core-Entity) IP addresses. You can also use Windows virtual keyboard on PXT: Start/Programs/Accessories/Accessibility/On-Screen Keyboard.
-------------	---

To access the E-EPC-E Setup menu, right click on the orange icon, in the task bar at the bottom of the Microsoft Windows' screen and select **Setting**, as shown below.



The following window is displayed:



Use the mouse and keyboard you connected to the PXT (LTE), to insert the setting values required by the scenario file you are using.

<b>NOTE</b>	The settings shown above are those values set in the scenario files you loaded into Step <a href="#">4</a> .
-------------	--

## Gateway setting

This is where all DUT uplink IP data is directed during TD-LTE terminal NS-IOT testing, regardless to which subnet the IP data is destined. When setting up a TD-LTE terminal NS-IOT procedure, this IP address is the target for all DUT IP traffic and is set to the IFT server IP address. If being used on a corporate LAN this could instead be set to the network **Default Gateway**.

## Agilent N5978A-1FP IFT Scripts for TD-LTE Terminal NS-IOT Installation Guide

### Alternative DUT IP

#### IPv4 Range:

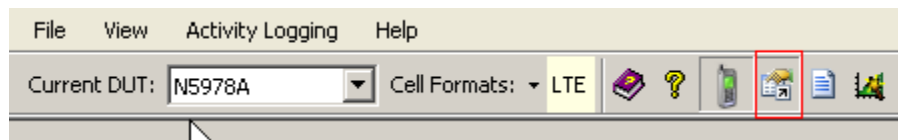
This is the IPv4 address range used when the DUT requests an IPv4 address when attached to the PXT<sup>1</sup> (LTE). The alternative DUT IPv4 range starts from 192.168.1.51 and ends with 192.168.1.59. Note that this should match any scenario file in use for TD-LTE terminal NS-IOT handovers.

#### IPv6 IID Range:

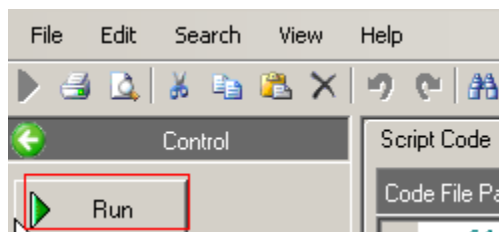
This is the Ipv6 address range used when the DUT requests an IPv6 address when attached to the PXT<sup>1</sup> (LTE). Note that this should match any scenario file in use for TD-LTE terminal NS-IOT handovers.

### Setting up the DUTs

To access the DUT Setup menu, first right click on the icon outlined in red in the task bar, as shown below.



12. Select the **Run** tab in the left column.



When the script is run, the following message box is displayed.

## N5978A NS-IOT Test

please select DUT Name Default

please add DUT Name  Add DUT Name

please add ATCmdRepresent  Add ATCommand

please add ATCmd

ATCmdRepresent ATTACH Modify ATCommand

ATCommand at+cgdcont=1,"IP"...0,0#at+cgact=1

please select Adapter Name MS TCP Loopback interface

☒ Debug\_script    DownLinkPXBCard GPIB0    DownLinkPXBAAddress 0 Test

☒ AutoReg

☒ Atcommand    UPLinkPXBCard GPIB0    DownLinkPXBAAddress 0 Test

☐ AutoDial

Select one of the DUT names from the drop-down list or add a new DUT name.

The DUTs available from the drop-down list are defined in the Default.txt, located in the Template file. The directory is C:\N5978ATestLogs\Template.

If you select **Add DUT Name**, the new DUT defined in the **please add DUT Name** field is added to the drop-down list.

## N5978A NS-IOT Test

please select DUT Name Default

please add DUT Name  Add DUT Name

If you select **Add AT Command**, the new parameters defined in the **please add ATCmdRepresent** and **please add ATCmd** field is added to the drop-down list.

## Agilent N5978A-1FP IFT Scripts for TD-LTE Terminal NS-IOT Installation Guide

please add ATCmdRepresent

please add ATCmd

Add ATCommand

To select or modify the existing parameters from the drop-down list defined in the **ATCmdRepresent** and **ATCommand**.

ATCmdRepresent

ATCommand

Modify ATCommand

ATCmdRepresent

ATCommand

please select Adapter Name

Modify ATCommand

Select one of the **Adapter Names** from the drop-down list.

please select Adapter Name

Start Skip

Selecting **Start** generates a default DUT-specific settings file for the DUT (if one does not already exist) at this location: C:\N5978ATestLogs\Template\Default.txt

**Table 5-3: UE-specific settings file configuration**

ATCmdRepresent	ATCmd
ATTACH	at+cgdcont=1,"IP"...,0,0#at+cgact=1,1
SWITCHON	at+CFUN = 1
SWITCHOFF	at+CFUN = 0
DETACH	at+cgact=0,1
AUTOPLMN	at+cops=0,2
MANPLMN	at+cops=1,2

**Agilent N5978A-1FP IFT Scripts for TD-LTE Terminal NS-IOT  
Installation Guide**

FREQUENCE	at+scfg=fn
-----------	------------

## 6 Service and Support

### ***Calling Agilent Technologies***

Agilent Technologies has offices around the world to provide you with complete support for your products. For help, to obtain servicing information or to order replacement parts, contact the nearest Agilent Technologies office listed on page 14. In any correspondence or telephone conversations, you will need the product number, full serial number, software revision, and any other pertinent contract numbers.

### ***Software and Technical Support Contracts***

If you have a Software and Technical Support Contract, there are three methods of accessing your technical support:

- Web-based support: My Support Center
- E-mail support
- Phone support

For fastest response times, we recommend using the web-based or e-mail access methods as these provide the most direct route to your technical support expert. All support cases may be viewed and tracked through the online support center (My Support Center), regardless of how you initially contacted technical support.

<b>NOTE</b>	Software and Technical Support Contracts (STSC) entitle you to software updates and feature enhancements, as well as direct access to technical experts. The N5978AS STSC covers all automation scripts you have purchased for the N5978A.
-------------	--

### **Web-based support**

You can directly enter and manage your support requests online via [www.agilent.com/find/mysupportcenter](http://www.agilent.com/find/mysupportcenter).

The first time you use My Support Center you will be asked to create a profile and provide proof of entitlement. Once your profile is created, you can use the online support center to enter your support request.

Each support request will be given a unique case number which you can use to track the progress of your support case. A technical expert will contact you via phone or email (whichever you have stated as your preferred option) to resolve your issue.

**Note:** English, Japanese, Korean, and Mandarin local language support is available.

### **E-mail support**

You can also contact our technical support at the following e-mail addresses:

- [wireless\\_test\\_support\\_americas@agilent.com](mailto:wireless_test_support_americas@agilent.com)
- [wireless\\_test\\_support\\_japan@agilent.com](mailto:wireless_test_support_japan@agilent.com)
- [wireless\\_test\\_support\\_europe@agilent.com](mailto:wireless_test_support_europe@agilent.com)
- [wireless\\_test\\_support\\_asia@agilent.com](mailto:wireless_test_support_asia@agilent.com)
- [wireless\\_test\\_support\\_korea@agilent.com](mailto:wireless_test_support_korea@agilent.com)

Your support request will be routed to a technical expert who will contact you via e-mail or phone (whichever you have stated as your preferred option) to help resolve your issue.

**Note:** English, Japanese, Korean, and Mandarin local language support is available.

## ***Locations for Agilent Technologies***

Online assistance: <http://www.agilent.com/find/assist>

If you do not have access to the Internet, one of these centers can direct you to your nearest representative:

If you have a current STSC for the E6621A, you can contact Agilent at the e-mail addresses listed in "Software and Technical Support Contracts" on page [20](#).

Should the Declaration of Conformity be required, please contact an Agilent Sales Representative, or the closest Agilent Sales Office. Alternately, contact Agilent at: [www.agilent.com](http://www.agilent.com).

### **Americas**

Brazil  
(11) 4197 3600

Canada  
(877) 894 4414

Mexico  
01800 5064 800

United States  
(800) 829 4444

### **Asia Pacific**

Australia  
1 800 629 485

India  
1 800 112 929

Malaysia  
1 800 888 848

China  
800 810 0189

Japan  
0120 (421) 345

Singapore  
1 800 375 8100

Hong Kong  
800 938 693

Korea  
080 769 0800

Taiwan  
0800 047 866

Other Asian Countries:

[www.agilent.com/find/contactus](http://www.agilent.com/find/contactus)

### **Europe & Middle East**

Belgium  
32 (0) 2 404 93 40

Ireland  
1890 924 204

Spain  
34 (91) 631 3300

Denmark  
45 45 80 12 15

Israel  
972-3-9288-504/544

Sweden  
0200-88 22 55

Finland  
358 (0) 10 855 2100

Italy  
39 02 92 60 8484

Switzerland  
0800 80 53 53

France  
0825 010 700\*  
\*0.125 €/minute

Netherlands  
31 (0) 20 547 2111

United Kingdom  
44 (0) 118 927 6201

Germany  
49 (0) 7031 464 6333

Other Unlisted Countries:

[www.agilent.com/find/contactus](http://www.agilent.com/find/contactus)



