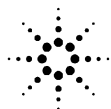


EditCal Calibration Factor Editor

Operation Manual

Second Edition



Agilent Technologies

Agilent Part No. N/A

June 2007

Printed in Japan

Notices

The information contained in this document is subject to change without notice.

This document contains proprietary information that is protected by copyright. All rights are reserved. No part of this document may be photocopied, reproduced, or translated to another language without the prior written consent of Agilent Technologies.

Microsoft®, MS-DOS®, Windows®, Visual C++®, Visual Basic®, VBA® and Excel® are registered

UNIX is a registered trademark in U.S. and other countries, licensed exclusively through X/Open Company Limited.

Portions ©Copyright 1996, Microsoft Corporation. All rights reserved.

© Copyright 2001, 2007 Agilent Technologies

Manual Printing History

The manual's printing date and part number indicate its current edition. The printing date changes when a new edition is printed. (Minor corrections and updates that are incorporated at reprint do not cause the date to change.) The manual part number changes when extensive technical changes are incorporated.

May 2001	First Edition
June 2007	Second Edition

Safety Symbol

General definitions of safety symbols used on the instrument or in manuals are listed below.



Instruction Manual symbol: the product is marked with this symbol when it is necessary for the user to refer to the instrument manual.



Alternating current.



Direct current.



On (Supply).



Off (Supply).



In position of push-button switch.



Out position of push-button switch.



Frame (or chassis) terminal. A connection to the frame (chassis) of the equipment which normally include all exposed metal structure.

WARNING

This warning sign denotes a hazard. It calls attention to a procedure, practice, condition or the like, which, if not correctly performed or adhered to, could result in injury or death to personnel.

CAUTION

This Caution sign denotes a hazard. It calls attention to a procedure, practice, condition or the like, which, if not correctly performed or adhered to, could result in damage to or destruction of part or all of the product.

NOTE

Note denotes important information. It calls attention to a procedure, practice, condition or the like, which is essential to highlight.

Exclusive Remedies

The remedies provided herein are buyer's sole and exclusive remedies. Agilent Technologies shall not be liable for any direct, indirect, special, incidental, or consequential damages, whether based on contract, tort, or any other legal theory.

Assistance

Product maintenance agreements and other customer assistance agreements are available for Agilent Technologies products.

For any assistance, contact your nearest Agilent Technologies Sales and Service Office. Addresses are provided at the back of this manual.

1

Installation

This chapter provides information for the installation of the EditCal Calibration factor editor.

Required Equipment

The following controller system is required to run the EditCal program.

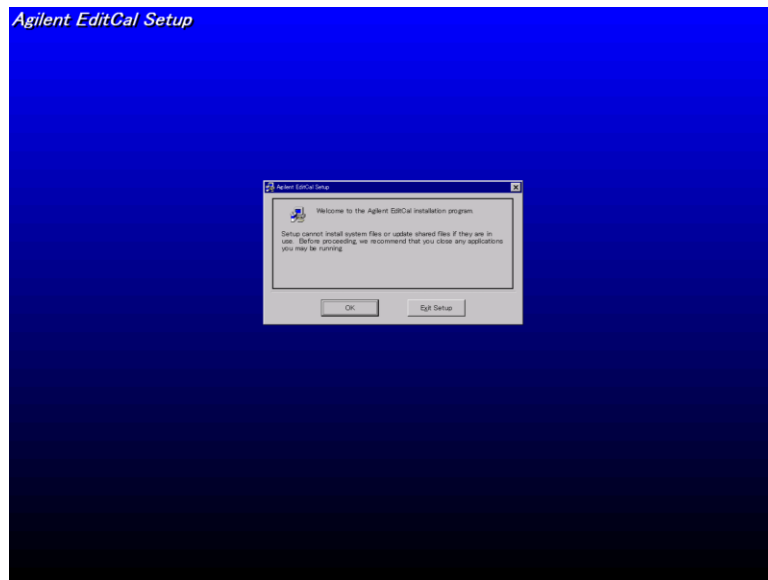
Windows PC	PC-AT Compatible, RAM:≥64MBytes, CPU Pentium 200 MHz or faster
OS	Windows 2000®, Windows XP®

Installation Procedure

1. Make copies of the following files in the same folder.
 - setup.exe
 - setup.lst
 - EditCal.CAB
2. Close any running applications.
3. Run setup.exe. “EditCal Setup Window” appears. To proceed to the next step, click on OK.

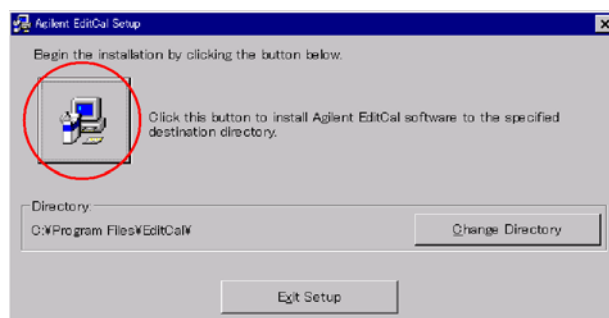
Figure 1-1

EditCal Setup Window



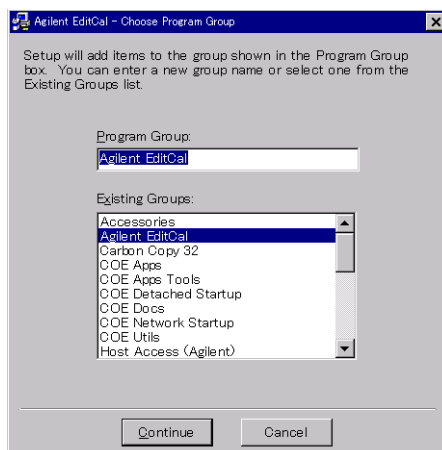
4. Then installation program asks the destination directory. To proceed to the next step, click on the button in the upper left side as shown in Figure 1-2.

Figure 1-2 Destination Directory Setting



5. Installation Program ask to input the Program Group. The default value is "Agilent EditCal". To proceed to the next step, click on Continue.

Figure 1-3 Program Group Setting



6. The installation program starts to copy files.

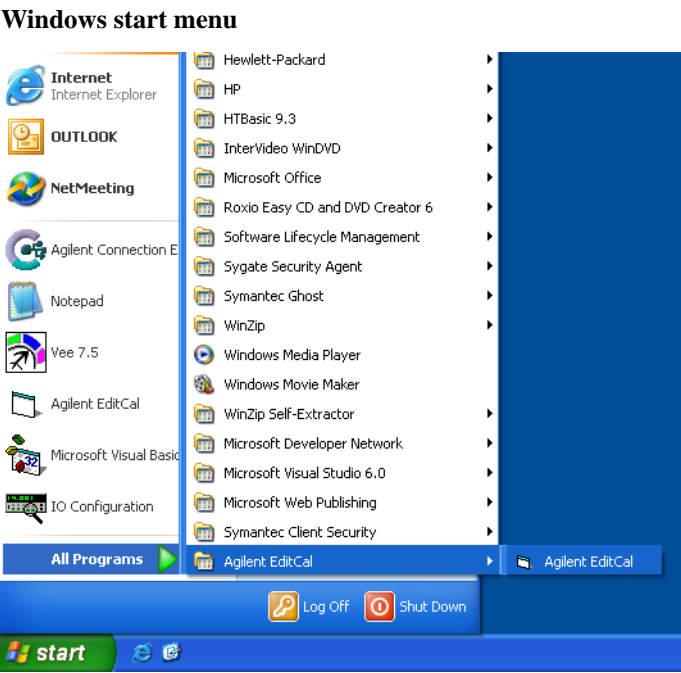
2 **Operation**

This chapter provides information for the operation of the EditCal calibration factor editor.

Starting EditCal

1. Execute EditCal from the Windows start button.

Figure 2-1

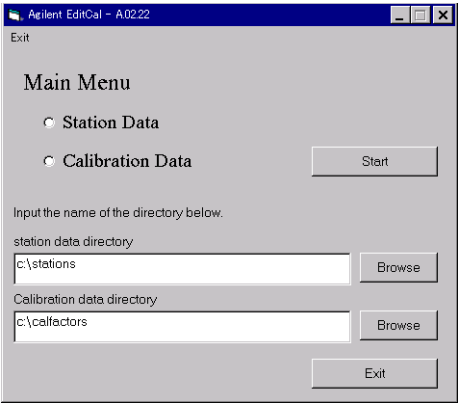


2. The Main Menu appears as shown in Figure 2-2. You need to set the following entry when you use EditCal first.

station data directory:	Directory storing information for equipment assigned to each station.
calibration data directory:	Directory storing calibration value of standard equipment

Figure 2-2

EditCal Main Menu



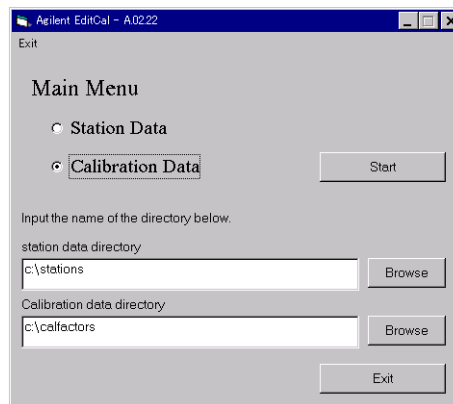
Editing Calibration Data

Register an instrument

1. Execute EditCal, then the Main Menu appears.
2. Choose Calibration Data and click on Start.

Figure 2-3

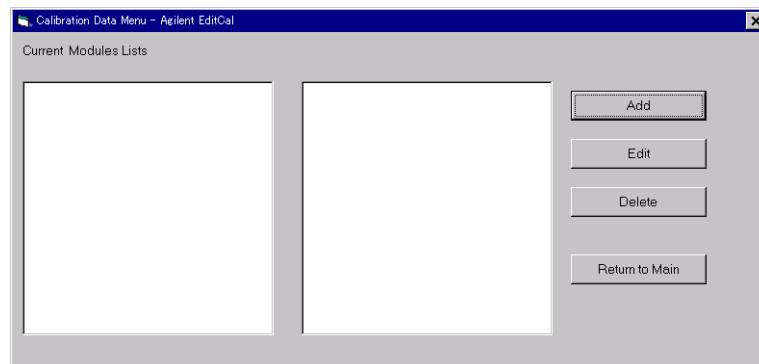
Main Menu



3. Calibration Data Menu window as shown in Figure 2-4 appears. click on Add.

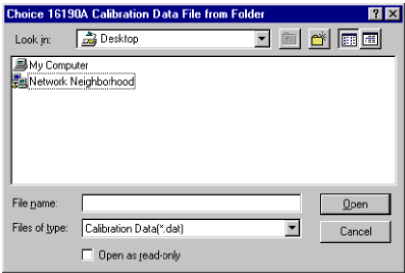
Figure 2-4

Calibration Data Menu



4. Choose the model number to add, then click on it.
5. The window appears according to the chosen model.
 - a. If you choose the 16190A or the 16190B, the window as shown in Figure 2-5 appears. Insert the data disk to the PC and choose the data file

Figure 2-5 Open File Window

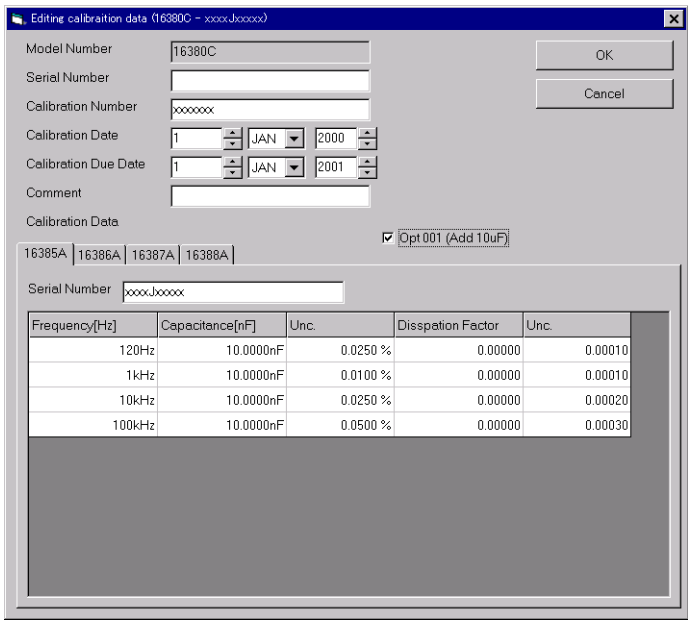


- b. If you choose 16380A/C or 42030A, the window as shown in Figure 2-6 appears. Input the data and the calibration values.

NOTE

In the 16380C Calibration Data Window, there is a check box for the option 001. If the 16380C includes the 10 μ F standard capacitor, check this box.

Figure 2-6 16380C Calibration Data Window



- c. If you choose 8482A or 8481D, the window as shown in Figure 2-7 appears. You can add and delete the calibration point

Figure 2-7 8481D Calibration Data Window

Model Number: 8481D

Serial Number: xxxxAxxxxx

Calibration Number: xxxxxxx

Calibration Date: 1 JAN 2000

Calibration Due Date: 1 JAN 2001

Comment: 50

Calibration Data

Frequency [MHz]	Calibration factor[%]
10.00	100.0
300.00	100.0
500.00	100.0
1000.00	100.0
2000.00	100.0
3000.00	100.0
4000.00	100.0
5000.00	100.0
6000.00	100.0

Add Calibration Point

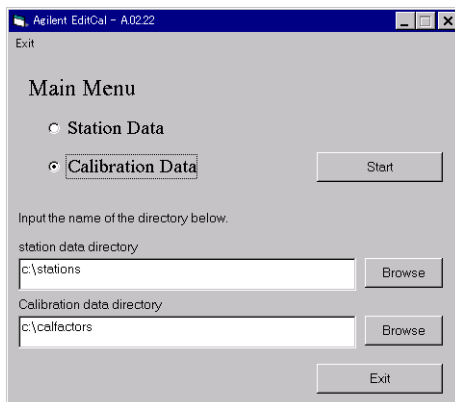
Delete Calibration Point

Editing the registered data

1. Execute EditCal, then the Main Menu appears.
2. Choose Calibration Data and click on Start.

Figure 2-8

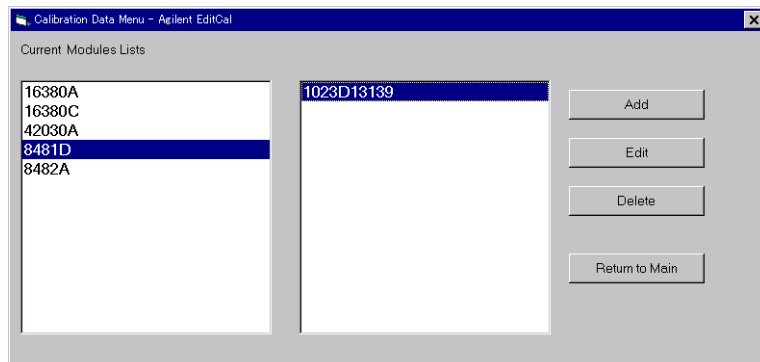
Main Menu



3. Calibration Data Menu window as shown in Figure 2-9 appears. Choose the model number and the serial number, then click on Edit.

Figure 2-9

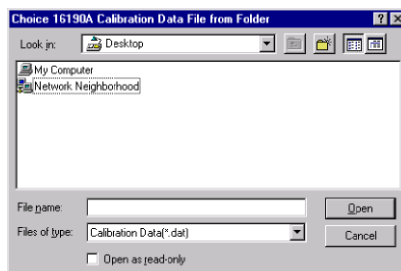
Calibration Data Menu



4. The window appears according to the chosen model.
 - a. If you choose the 16190A or the 16190B, the window as shown in Figure 2-10 appears. Insert the data disk to the PC and choose the data file.

Figure 2-10

Open File Window

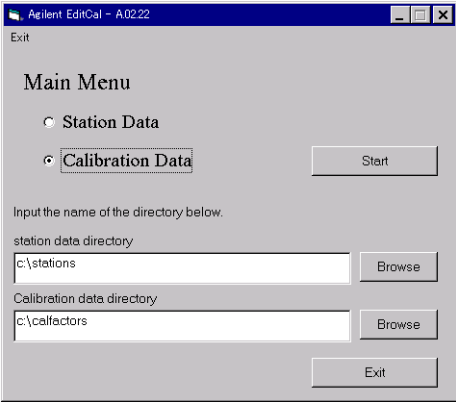


- b. If you choose another model, edit the data same as the registration. But you cannot edit the serial number.

Deleting Calibration Data

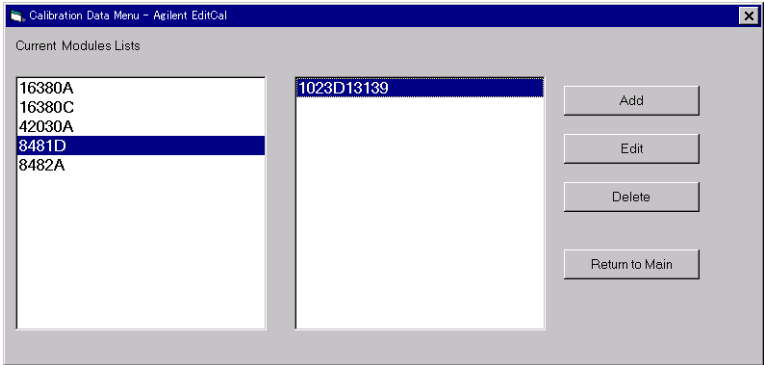
- 1. Execute EditCal, then the Main Menu appears.
- 2. Choose Calibration Data and click on Start.

Figure 2-11 Main Menu



- 3. Calibration Data Menu window as shown in Figure 2-12 appears. Choose the model number and the serial number, then click on Delete.

Figure 2-12 Calibration Data Menu



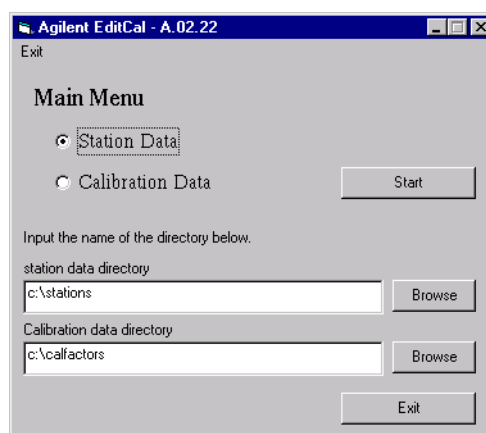
Editing Station Data

Adding a new station

1. Execute EditCal, then the Main Menu appears.
2. Choose Station Data and click on Start.

Figure 2-13

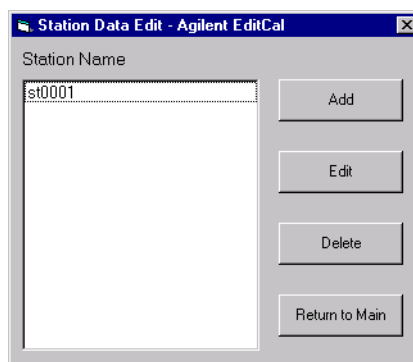
Main Menu



3. Station Data Menu window as shown in Figure 2-14 appears. click on Add.

Figure 2-14

Station Data Menu



4. The window as shown in Figure 2-15 appears. Input a new station name, then click on OK.

Figure 2-15

Station Name Input Window



5. The registration is completed. Edit the station data as described in “Editing the

Operation
Editing Station Data

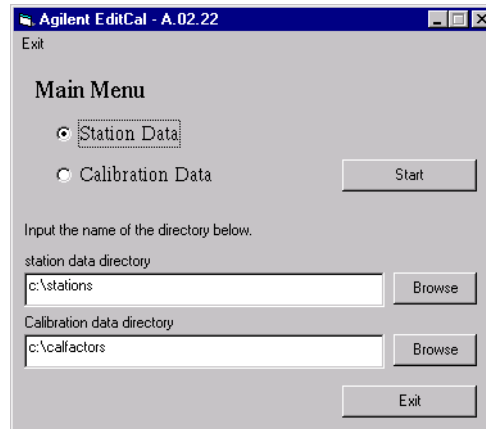
registered station data”

Editing the registered station data

1. Execute EditCal, then the Main Menu appears.
2. Choose Station Data and click on Start.

Figure 2-16

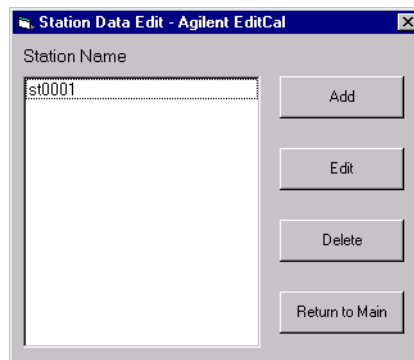
Main Menu



3. Calibration Data Menu window as shown in Figure 2-17 appears. Choose the station, then click on Edit.

Figure 2-17

Station Data Menu



4. Station Edit Window as shown in Figure 2-18 appears.

Figure 2-18

Station Edit Window

5. In Station Edit Window, You can take the following actions.

- Add the new instrument
Click on Add Instrument, then choose the model to add.
- Delete the registered instrument
Click the registered in the Station Edit Window, then click on Delete Instrument.
- Clear the Instrument List
Click on Clear Instrument List, then the all registered model are deleted.
- Change the serial number of the assigned equipment.
Click on the pulldown menu tab, then choose the serial number as shown in Figure 2-19. Click on Save Instrument to reflect the update.

Figure 2-19

Pulldown Menu

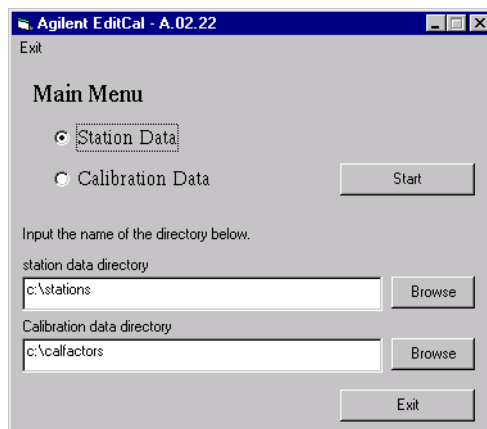
- Edit the assigned instrument data
Edit the data, then click on Save Instrument.

Deleting Station Data

1. Execute EditCal, then the Main Menu appears.
2. Choose Station Data and click on Start.

Figure 2-20

Main Menu



3. Station Data Menu window as shown in Figure 2-21 appears. Choose the station name, then click on Delete.

Figure 2-21

Calibration Data Menu

