

Startup Guide

# Keysight M9536A AXIe Embedded Controller





# Notices

© Keysight Technologies, Inc. 2011 – 2014

No part of this manual may be reproduced in any form or by any means (including electronic storage and retrieval or translation into a foreign language) without prior agreement and written consent from Keysight Technologies, Inc. as governed by United States and international copyright laws.

## Manual Part Number

M9536-90001

## Edition

Seventh Edition, December 2014  
Printed in Malaysia

Keysight Technologies, Inc.  
1400 Fountaingrove Parkway  
Santa Rosa, CA 95403 USA

## Trademarks

PXI is a registered trademark of the PXI Systems Alliance.

PICMG®, Compact PCI®, and AdvancedTCA® are registered trademarks of the PCI Industrial Computer Manufacturers Group

PCI-SIG®, PCI Express®, and PCIe® are registered trademarks of PCI-SIG

Intel is a registered trademark of Intel Corporation

AXIe and the AXIe logo are trademarks of the AXIe Consortium, Inc.

## Sales and Technical Support

To contact Keysight for sales and technical support, refer to the support links on the following Keysight websites:

[www.keysight.com/find/9536A](http://www.keysight.com/find/9536A) (product-specific information and support, software and documentation updates)

[www.keysight.com/find/assist](http://www.keysight.com/find/assist) (world-wide contact information for repair and service)

## Declaration of Conformity

Declarations of Conformity for this product and for other Keysight products may be downloaded from the Web. Go to <http://keysight.com/go/conformity> and click on “Declarations of Conformity.” You can then search by product number to find the latest Declaration of Conformity.

## Technology Licenses

The hardware and/or software described in this document are furnished under a license and may be used or copied only in accordance with the terms of such license.

## Warranty

THE MATERIAL CONTAINED IN THIS DOCUMENT IS PROVIDED “AS IS,” AND IS SUBJECT TO BEING CHANGED, WITHOUT NOTICE, IN FUTURE EDITIONS. FURTHER, TO THE MAXIMUM EXTENT PERMITTED BY APPLICABLE LAW, KEYSIGHT DISCLAIMS ALL WARRANTIES, EITHER EXPRESS OR IMPLIED, WITH REGARD TO THIS MANUAL AND ANY INFORMATION CONTAINED HEREIN, INCLUDING BUT NOT LIMITED TO THE IMPLIED WARRANTIES OF MERCHANTABILITY AND FITNESS FOR A PARTICULAR PURPOSE. KEYSIGHT SHALL NOT BE LIABLE FOR ERRORS OR FOR INCIDENTAL OR CONSEQUENTIAL DAMAGES IN CONNECTION WITH THE FURNISHING, USE, OR PERFORMANCE OF THIS DOCUMENT OR OF ANY INFORMATION CONTAINED HEREIN. SHOULD KEYSIGHT AND THE USER HAVE A SEPARATE WRITTEN AGREEMENT WITH WARRANTY TERMS COVERING THE MATERIAL IN THIS DOCUMENT THAT CONFLICT WITH THESE TERMS, THE WARRANTY TERMS IN THE SEPARATE AGREEMENT SHALL CONTROL.

Keysight Technologies does not warrant third-party system-level (combination of chassis, controllers, modules, etc.) performance, safety, or regulatory compliance unless specifically stated.

## DFARS/Restricted Rights Notices

If software is for use in the performance of a U.S. Government prime contract or subcontract, Software is delivered and licensed as “Commercial computer software” as defined in DFAR 252.227-7014 (June 1995), or as a “commercial item” as defined in FAR 2.101(a) or as “Restricted computer software” as defined in FAR 52.227-19 (June 1987) or any equivalent agency regulation or contract clause. Use, duplication or disclosure of Software is subject to Keysight Technologies’ standard commercial license terms, and non-DOD Departments and Agencies of the U.S. Government will receive no greater than Restricted Rights as defined in FAR 52.227-19(c)(1-2) (June 1987). U.S. Government users will receive no greater than Limited Rights as defined in FAR 52.227-14 (June 1987) or DFAR 252.227-7015 (b)(2) (November 1995), as applicable in any technical data.

# Safety Information

The following general safety precautions must be observed during all phases of operation of this instrument. Failure to comply with these precautions or with specific warnings or operating instructions in the product manuals violates safety standards of design, manufacture, and intended use of the instrument. Keysight Technologies assumes no liability for the customer's failure to comply with these requirements.

## General

**Do not use this product in any manner not specified by the manufacturer. The protective features of this product must not be impaired if it is used in a manner specified in the operation instructions.**

### Before Applying Power

**Verify that all safety precautions are taken. Make all connections to the unit before applying power. Note the external markings described under "Safety Symbols".**

### Ground the Instrument

Keysight chassis' are provided with a grounding-type power plug. The instrument chassis and cover must be connected to an electrical ground to minimize shock hazard. The ground pin must be firmly connected to an electrical ground (safety ground) terminal at the power outlet. Any interruption of the protective (grounding) conductor or disconnection of the protective earth terminal will cause a potential shock hazard that could result in personal injury.

### Do Not Operate in an Explosive Atmosphere

Do not operate the module/chassis in the presence of flammable gases or fumes.

### Do Not Operate Near Flammable Liquids

Do not operate the module/chassis in the presence of flammable liquids or near containers of such liquids.

### Cleaning

Clean the outside of the Keysight module/chassis with a soft, lint-free, slightly dampened cloth. Do not use detergent or chemical solvents.

### Do Not Remove Instrument Cover

Only qualified, service-trained personnel who are aware of the hazards involved should remove instrument covers. Always disconnect the power cable and any external circuits before removing the instrument cover.

### Keep away from live circuits

Operating personnel must not remove equipment covers or shields. Procedures involving the removal of covers and shields are for use by service-trained personnel only. Under certain conditions, dangerous voltages may exist even with the equipment switched off. To avoid dangerous electrical shock, DO NOT perform procedures involving cover or shield removal unless you are qualified to do so.

### DO NOT operate damaged equipment

Whenever it is possible that the safety protection features built into this product have been impaired, either through physical damage, excessive moisture, or any other reason, REMOVE POWER and do not use the product until safe operation can be verified by service-trained personnel. If necessary, return the product to an Keysight Technologies Sales and Service Office for service and repair to ensure the safety features are maintained.

### DO NOT block the primary disconnect

The primary disconnect device is the appliance connector/power cord when a chassis used by itself, but when installed into a rack or system the disconnect may be impaired and must be considered part of the installation.

### Do Not Modify the Instrument

Do not install substitute parts or perform any unauthorized modification to the product. Return the product to an Keysight Sales and Service Office to ensure that safety features are maintained.

### In Case of Damage

Instruments that appear damaged or defective should be made inoperative and secured against unintended operation until they can be repaired by qualified service personnel

## CAUTION

**Do NOT block vents and fan exhaust:** To ensure adequate cooling and ventilation, leave a gap of at least 50mm (2") around vent holes on both sides of the chassis.

**Do NOT operate with empty slots:** To ensure proper cooling and avoid damaging equipment, fill each empty slot with an AXle filler panel module.

**Do NOT stack free-standing chassis:** Stacked chassis should be rack-mounted.

All modules are grounded through the chassis: During installation, tighten each module's retaining screws to secure the module to the chassis and to make the ground connection.

## WARNING

Operator is responsible to maintain safe operating conditions. To ensure safe operating conditions, modules should not be operated beyond the full temperature range specified in the Environmental and physical specification. Exceeding safe operating conditions can result in shorter lifespan, improper module performance and user safety issues. When the modules are in use and operation within the specified full temperature range is not maintained, module surface temperatures may exceed safe handling conditions which can cause discomfort or burns if touched. In the event of a module exceeding the full temperature range, always allow the module to cool before touching or removing modules from the chassis.

## Safety Symbols

### CAUTION

A CAUTION denotes a hazard. It calls attention to an operating procedure or practice, that, if not correctly performed or adhered to could result in damage to the product or loss of important data. Do not proceed beyond a CAUTION notice until the indicated conditions are fully understood and met.

### WARNING

A WARNING denotes a hazard. It calls attention to an operating procedure or practice, that, if not correctly performed or adhered to, could result in personal injury or death. Do not proceed beyond a WARNING notice until the indicated conditions are fully understood and met.

Products display the following symbols:



Warning, risk of electric shock



Refer to manual for additional safety information.



Earth Ground.



Chassis Ground.



Alternating Current (AC).



Standby Power. Unit is not completely disconnected from AC mains when switch is in standby.



Antistatic precautions should be taken.

For localized Safety Warnings, Refer to Keysight Safety document (p/n 9320-6792).



Notice for European Community: This product complies with the relevant European legal Directives: EMC Directive (2004/108/EC) and Low Voltage Directive (2006/95/EC).



The Regulatory Compliance Mark (RCM) mark is a registered trademark. This signifies compliance with the Australia EMC Framework regulations under the terms of the Radio Communication Act of 1992.

### ICES/NMB-001

ICES/NMB-001 indicates that this ISM device complies with the Canadian ICES-001.



This symbol represents the time period during which no hazardous or toxic substance elements are expected to leak or deteriorate during normal use. Forty years is the expected useful life of this product.

### WARNING

**This computer contains a lithium-ion battery. There is a risk of fire and chemical burn if the battery pack is handled improperly. Do not disassemble, crush, puncture, short external contacts, dispose of in water or fire, or expose it to temperature higher than 60 °C (140 °F).**



Waste Electrical and Electronic Equipment (WEEE) Directive 2002/96/EC

This product complies with the WEEE Directive (2002/96/EC) marking requirement. The affixed product label (see below) indicates that you must not discard this electrical/electronic product in domestic household waste.

Product Category: With reference to the equipment types in the WEEE directive Annex 1, this product is classified as a "Monitoring and Control instrumentation" product.

Do not dispose in domestic household waste.

To return unwanted products, contact your local Keysight office, or see [www.keysight.com/environment/product](http://www.keysight.com/environment/product) for more information.





# Contents

Introduction . . . . .	11
Related documentation . . . . .	11
M9536A at a Glance . . . . .	12
Front panel LED definitions . . . . .	12
Base channel fabric channel LEDs . . . . .	13
LAN / Gigabit Ethernet (GbE) connector LED. . . . .	13
Step 1: Unpack and Inspect the Module . . . . .	14
ESD . . . . .	14
Inspect for damage. . . . .	15
If you need to return the module for service . . . . .	15
Step 2: Verify Shipment Contents. . . . .	16
Step 3: Install the M9536A Embedded Controller . . . . .	17
Removing the M9536A from the chassis . . . . .	18
Power on sequence . . . . .	18
Power-off sequence. . . . .	18
Power Down Modes . . . . .	19
Using the LAN Ports. . . . .	19
LAN Port Recommendations. . . . .	20
Embedded System Module LAN connection . . . . .	20
Microsoft Windows Activation (Windows 7 Only). . . . .	22
Controller Operating System . . . . .	22
Windows Security . . . . .	23
User data backup . . . . .	23
Create a System Repair disc . . . . .	24
Create a System Image . . . . .	24
Step 4: Run Keysight IO Libraries Suite . . . . .	25
Step 5. Verify Operation . . . . .	27
Step 6: Install User Application Modules in the AXIe Chassis . . . . .	28
Install application module drivers (if necessary) . . . . .	29
Chassis shutdown. . . . .	29
Controller BIOS . . . . .	30
Environmental Operating Conditions . . . . .	31





# M9591A AXIe Embedded Controller Startup Guide

## Introduction

Keysight's M9536A is a one-slot AXIe compatible embedded PC controller. It can be used to build compact AXIe systems while integrating easily with LXI instruments due to the built-in Gigabit LAN interface. Features include:

- One Intel Xeon EP Quad Core L5518 Processor running at 2.13 GHz
- Gen2 PCI Express link (5.0 GT/s PCI Express) to the AXIe backplane
- 8 GB RAM standard, 16GB RAM optional (up to 24 GB RAM Maximum)\*
- 160 GB SATA 2.5 inch, solid state hard drive (SSD).
- Three USB 2.0 ports (type A), two 10/100/1000 BASE-T LAN ports (GbE), one serial COM port, and UXGA port (up to 1600x1200 resolution)
- Preloaded with the Keysight I/O Libraries Suite and your choice of the Microsoft Windows Embedded Standard 7 (WES 7) 32-bit or 64-bit Operating System

Keysight's M9536A is AXIe 1.0 compliant. It does not provide the chassis management functions of an AXIe system module but it does provide application processing power for the chassis. Hence, the controller must be installed in slot #1 of the Keysight M9502A or M9505A AXIe chassis. Keysight's Embedded System Module is required.

## Related documentation

Because the Operating System and drivers were installed at the factory and no additional drivers are required, no printed documentation other than this Startup Guide is supplied with the Controller Module.

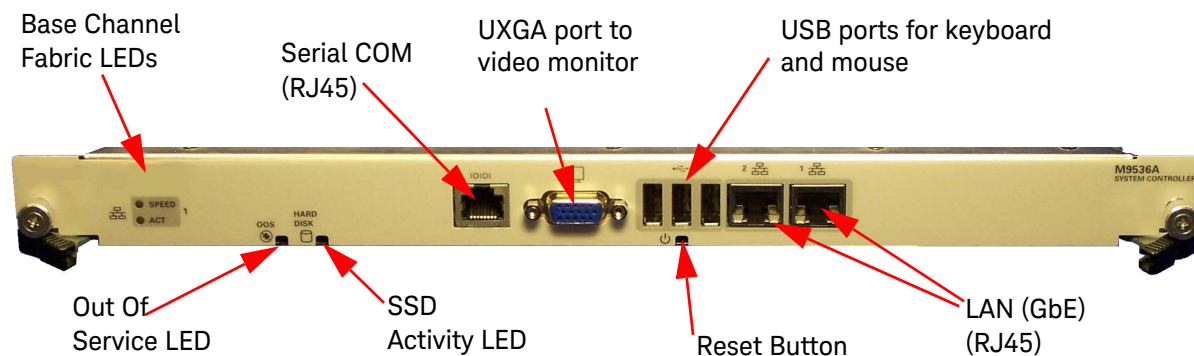
Adobe Reader is required to view the documentation supplied on the M9536 product information CD. It is available free at: <http://www.adobe.com>. You should install this on your M9536A prior to attempting to open a .PDF file.

For the latest M9536A specifications, go to: [www.Keysight.com/find/M9536A](http://www.Keysight.com/find/M9536A).

\* The M9536A has three 240-pin, RDIMM sockets which support DDR3-1333 REG/ECC RAM sticks. Each socket can support memory modules up to 8GB for a total memory capacity of 24GB. The standard M9536A configuration is a single 8GB memory stick with a factory option to add a second 8GB memory stick. This leaves an empty socket for future expansion. Note: The capability of addressing 4GB memory is operating system dependent. A 32-bit OS system may not be able to address the full memory space. To use the full 8GB/16GB/24GB memory, a 64-bit OS must be used.

## M9536A at a Glance

The following figure shows the front panel for the M9536A. Information about installing the controller and basic use follows in this manual.



### Front panel LED definitions

The following tables list the front panel LEDs and a brief description of their use and what they indicate.

#### Out Of Service (OOS) LED

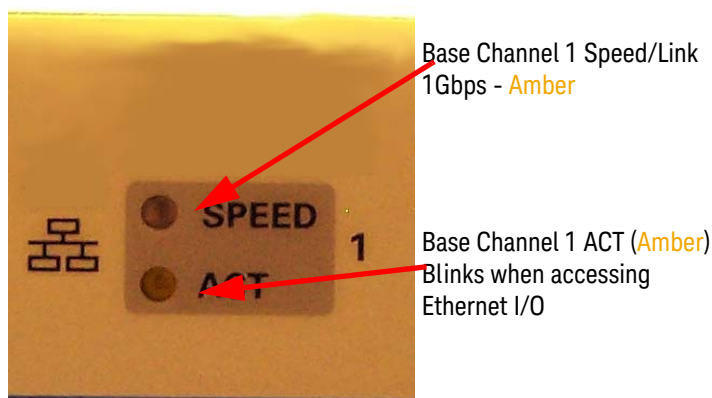
Out of Service LED (Red)	State
Blink	During BIOS POST
Off	BIOS POST OK
On	After Operating System shutdown

#### Hard Drive (SSD) LED

LED (Amber)	State
Blink/on	During access

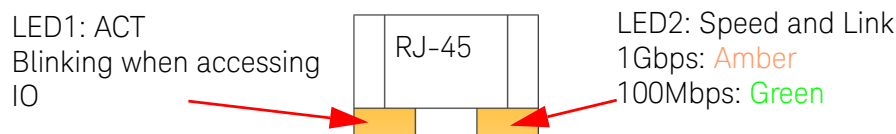
## Base channel fabric channel LEDs

These LEDs indicate the LAN activity on the base channel (backplane).



## LAN / Gigabit Ethernet (GbE) connector LED

These LEDs indicate activity on the front panel LAN channels.



### CAUTION

**IMPORTANT:** Keysight M9502A or M9505A AXle chassis must have firmware revision 1.3.23 or later for the M9536A to identify and communicate with other chassis module. Refer to the Keysight chassis web pages for information on updating the firmware.

### NOTE

The drivers and Keysight's IO Libraries Suite installed on the M9536A controller are the current versions available when the module shipped from the factory. Regularly check Keysight's web sites and download the latest drivers and software:

[www.Keysight.com/find/M9536A](http://www.Keysight.com/find/M9536A) for the embedded controller

[www.Keysight.com/find/iosuite](http://www.Keysight.com/find/iosuite) for IO Libraries

Periodically check for the latest AXle chassis firmware:

[www.Keysight.com/find/M9502A](http://www.Keysight.com/find/M9502A) for the 2-slot AXle chassis

[www.Keysight.com/find/M9505A](http://www.Keysight.com/find/M9505A) for the 5-slot AXle chassis

For example, Keysight's AXle chassis firmware version 1.3.23 (and later) provides for enhanced fan control and E-Keying that was not supported in earlier chassis firmware versions.

## Step 1: Unpack and Inspect the Module

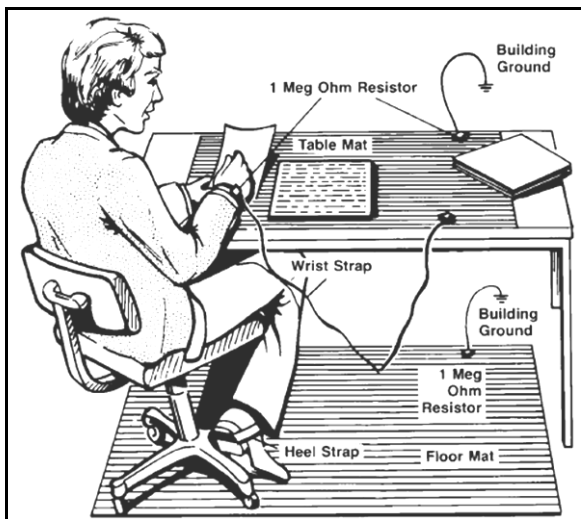
### CAUTION

Keysight's AXIe Modules are shipped in materials that prevent static electricity damage. The modules should only be removed from the packaging in an anti-static area ensuring that correct anti-static precautions are taken. Store all modules in anti-static envelopes when not in use.

### ESD

Electrostatic discharge (ESD) can damage or destroy electronic components. All work on electronic assemblies should be performed at a static-safe work station. The following figure shows an example of a static-safe work station using two types of ESD protection. Purchase acceptable ESD accessories from your local supplier.

- Conductive table-mat and wrist-strap combination.
- Conductive floor-mat and heel-strap combination.



Both methods, when used together, provide a significant level of ESD protection. Of the two, only the table-mat and wrist-strap combination provides adequate ESD protection when used alone. To ensure user safety, the static-safe accessories must provide at least 1 M $\Omega$  of isolation from ground.

## Inspect for damage

After unpacking the controller module, carefully inspect it for any shipping damage. Report any damage to the shipping agent immediately, as such damage is not covered by the warranty.

### CAUTION

To avoid damage when handling a module; do not touch exposed connector pins.

### NOTE

Information on preventing damage to your Keysight equipment can be found at [www.Keysight.com/find/tips](http://www.Keysight.com/find/tips).

## If you need to return the module for service

Should it become necessary to return the module for repair or service, follow the steps below:

- 1 Review the warranty information shipped with your product.
- 2 Contact Keysight to obtain a return authorization and return address. If you need assistance finding Keysight contact information go to [www.Keysight.com/find/assist](http://www.Keysight.com/find/assist) (worldwide contact information for repair and service) or refer to the **Support** information on the product web page at: [www.Keysight.com/find/M9536A](http://www.Keysight.com/find/M9536A).
- 3 Write the following information on a tag and attach it to the malfunctioning equipment.
  - Name and address of owner. A Post Office box is not acceptable as a return address.
  - Product model number (for example, M9536A)
  - Product serial number (for example, TWxxxxxxx). The serial number label is located on the side of the module.
  - A description of failure or service required.
- 4 Carefully pack the module in its original ESD bag and carton. If the original carton is not available, use bubble wrap or packing peanuts, place the instrument in a sealed container and mark the container "FRAGILE".
- 5 On the shipping label, write ATTENTION REPAIR DEPARTMENT and the service order number (if known).

### NOTE

If any correspondence is required, refer to the product by model number and serial number.

## Step 2: Verify Shipment Contents

Your shipment should have included the following:

- The Keysight M9536A module that you ordered.
- This document (Keysight M9536A AXIe Embedded Controller Startup Guide).
- An *Automation-Ready CD with Keysight IO Libraries Suite*.
- An *M9536A Product Information CD*. This CD contains the *M9536A User Guide* which provides detailed information about the module, configuration, etc.
- Any other accessories that you ordered (cables, connectors, etc.).
- Note, a keyboard, mouse, video monitor are not included with the M9536A

The operating system has been installed for you at the factory.

### NOTE

Keysight IO Libraries version (the latest version available at the time of shipment) is pre-installed on the controller. It must be installed prior to installing and running any application software. The latest version can be downloaded from:  
[www.Keysight.com/find/iosuite](http://www.Keysight.com/find/iosuite).

No other drivers are required to operate the controller module. However, your application modules may require drivers. If possible, you should connect the controller module to the internet and download drivers from the original source. Alternately, you can install the drivers on a USB memory stick and install them accordingly.

## Step 3: Install the M9536A Embedded Controller

The Keysight M9536A has been designed for easy installation. However, the following standard precautions, installation procedures, and general information must be observed to ensure proper installation and to prevent damage to the board, other system components, or injury to personnel.

Follow these steps to install the M9536A Embedded Controller in the AXIe chassis.

- 1 Ensure the AXIe chassis is turned off. The chassis should be plugged into an AC power source. The AC power cord grounds the chassis and protects it from electrical damage while modules are installed.
- 2 Extend and pull out on the controller's ejector/injector handles.

### NOTE

Embedded controllers, such as the M9536A, must be installed in Slot 1 of the AXIe chassis.

- 3 Carefully align the M9536A board edges with the chassis guide rails and insert the controller into the chassis guide rails.
- 4 Check that the catch hooks and alignment pins at both ends of the module are correctly inserted into the proper chassis holes. Push inward on the handles until the module is firmly seated in the chassis. (Do not force the handles if there is resistance; this may damage the connectors and/or backplane.)
- 5 Collapse the insertion/extraction handles against the module faceplate.
- 6 Tighten the captive retaining screws at both ends of the module
- 7 Connect other peripherals (such as the USB keyboard and mouse, VGA monitor, LAN cable for remote access, etc.) to the embedded controller front panel. See the graphic on the next page.
- 8 Plug in and power up the AXIe chassis. Verify that the chassis fans are operating and free of obstructions that may restrict air flow.

### NOTE

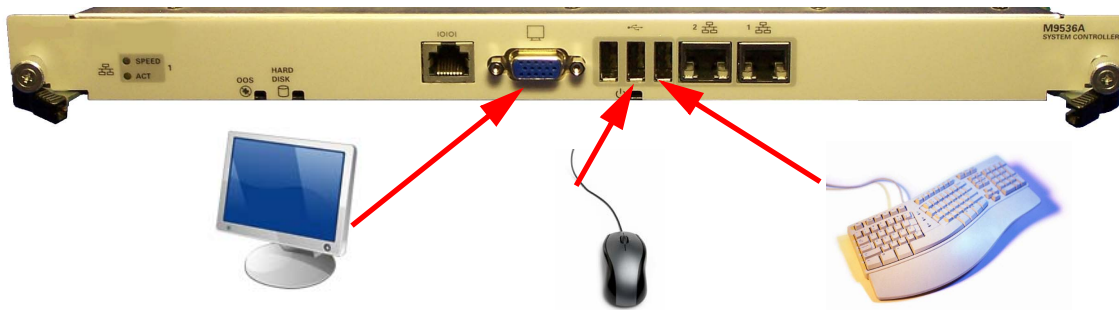
Refer to the instructions provided with your AXIe Chassis for chassis power up / power down instructions.

### CAUTION

**IMPORTANT:** Keysight M9502A or M9505A AXIe chassis must have firmware revision 1.3.23 or later for the M9536A to identify and communicate with other chassis modules. Refer to the Keysight chassis web pages for information on updating the chassis firmware.

### CAUTION

The M9536A module is powered and connects to the Embedded System Module (ESM) through the chassis backplane. With the M9536A installed, do not connect an external host PC to the ESM module PCIe connector.



## Removing the M9536A from the chassis

To remove the M9536A controller, reverse the previous procedure. Execute the Windows shut down process on the controller first. Then power down the chassis. Loosen the captive screws, extend and pull outwards on the extraction handles to release the module from the backplane. Pull the module towards you until it is free of the chassis.

### CAUTION

**Exercise care when handling the board as the heat sink can get very hot. Do not touch the heat sink when installing or removing the board. The board should not be placed on any surface or in any form of storage container until the board and heat sink have cooled down to room temperature.**

## Power on sequence

The controller will boot with the operating system installed. Allow the controller to run through its startup screens and start the operating system. For detailed power on sequence and configuration information, refer to the *M9536A User Guide* on the *M9536A Product Information CD*.

## Power-off sequence.

As with any PC, Windows-based instruments should not be shutdown by either removing the power via an external power source or by pulling the power plug out from the rear panel. This could corrupt the operating system. The only approved way to shut down the controller is to execute the Windows shutdown process and then turn off the chassis via the chassis On/Off button.



### CAUTION

Pressing the chassis power button immediately removes power from the controller. This may cause loss of data or damage to the controller.

## Power Down Modes

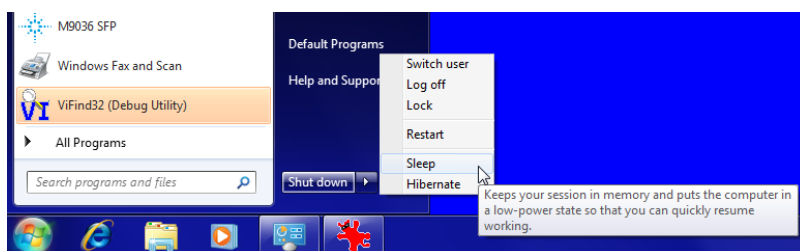
Keysight's M9536A defaults to the Windows High Performance Power Plan. This plan does not allow the controller display to shut off or the controller to enter a sleep mode.

### NOTE

Do not enable the Microsoft Windows sleep mode. It is possible that the M9536A controller could go into sleep mode while it is running a user test program. The controller may not have proper chassis enumeration when it wakes up.

If you have a USB keyboard with a Sleep button (sometimes this is a key with a moon logo), do not use it.

Do not use the Sleep or Hibernate modes from the Startup Button as shown in the following graphic.



## Using the LAN Ports

If you installed the Keysight M9536A controller in an Keysight AXIe chassis (such as the M9502A or M9505A), there are a total of three LAN ports accessible on the front panels -- two on the M9536A controller and one on the Embedded System Module (ESM). Windows Device Manager shows a total of five (5) individual Network Interface Cards (NICs); one is not used and one connects to the chassis backplane.

### CAUTION

Changing the LAN port connection or removing the LAN cable, may cause Keysight Connection Expert to lose track of LAN-enabled instruments. Reboot the AXIe chassis to restore the complete list of LAN-enabled instruments. Read the following for details.

## LAN Port Recommendations

As a general rule, connect a network LAN cable to the ESM's LAN port and connect LXI instruments to the M9536A's LAN ports. While other configurations are viable, this configuration provides the fastest and most consistent reporting in Keysight Connection Expert. Refer to the figure on the following page.

- Where you have the network and instruments connected when the chassis and controller first power on determines how quickly Keysight Connection Expert locates network instruments. If necessary, shut down the controller and chassis and reboot.
- If you move a LAN cable while chassis power is applied, Connection Expert may not find all of the instruments available on the network.

For example, if the LAN cable is connected to the ESM when power is first applied to the chassis and subsequently moved to one of the two LAN ports on the controller (while the chassis is still powered on), Connection Expert may only find the M9536A controller and AXIe modules installed in the chassis. Shut down the controller and chassis and reboot to restore Connection Expert's ability to locate other network instruments.

- Connect external LAN-enabled instruments (LXI instruments) to the M9536A controller LAN ports. This allows Keysight Connection Expert to automatically find the instruments. These instruments will have a local LAN IP address or private network range.

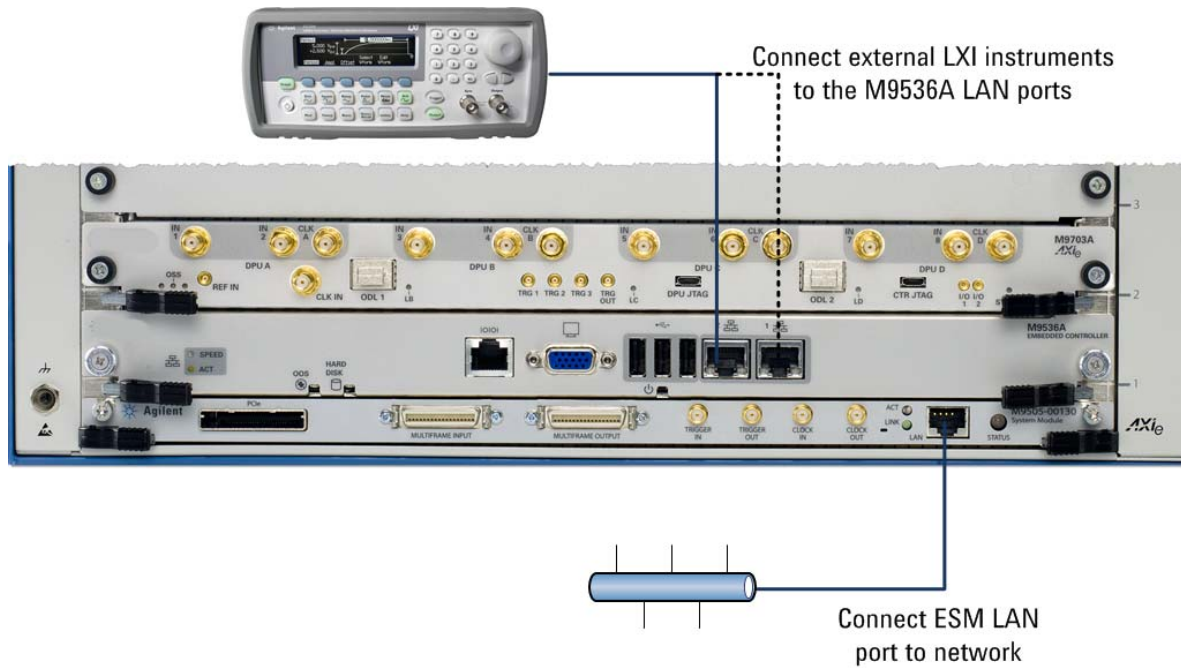
LXI instruments may be connected to the ESM's LAN port but Connection Expert may not automatically find them when these instruments are not located on the same LAN subnet range. However, instruments may be added manually using Connection Expert's Add Address feature.

## Embedded System Module LAN connection

Changes to the Embedded System Module (ESM) LAN connection are only detected as the ESM is powered up. Therefore, whenever you change the ESM LAN connection do the following:

- 1** Power down the M9536A using the Shut down selection on the Windows Start menu.
- 2** After shut down is complete, power down the chassis using the chassis power button.
- 3** Make the desired change to the LAN connection.
- 4** Use the chassis power button to power up the chassis and M9536A controller.
- 5** After Windows starts, verify that your LAN interface is operating correctly.

Step 3: Install the M9536A Embedded Controller



## Microsoft Windows Activation (Windows 7 Only)

**NOTE**

Activation applies to the Windows 7 operating system only. No activation is required or available for the WES 7 operating system.

Keysight ensures that your copy of Windows 7 is activated at the time it ships from the factory. However, the first time you install and turn on the M9536A and Windows 7 starts, you must accept the End User License Agreement (EULA). A copy of the EULA was included in your controller shipment. For information about Windows 7 EULA, go to [www.microsoft.com](http://www.microsoft.com).

To verify Windows Activation, do the following:

- 1 Open the System by clicking the Windows **Start** button. Click **Control Panel**, then **System and Maintenance**, and then click **System**.
- 2 Scroll down to the bottom of the screen. Under **Windows Activation**, you can view the activation status.

**CAUTION**

By Keysight's agreement with Microsoft, Windows Automatic Update is turned off at installation. You may choose to turn Windows Automatic Update on after starting the operating system. However, Keysight cannot be held responsible for changes to the system caused by the automatic update process. It is possible for automatic updates to cause unexpected behavior in the system.

**NOTE**

Make certain the **caps lock** and **num lock** keys are off when entering passwords (especially for the first time). It is possible for these keys to be on when the controller powers on.

## Controller Operating System

Your M9536A comes with our choice of either Microsoft Windows Embedded Standard 7 (WES 7) 32-bit or 64-bit Operating System preinstalled along with the Keysight IO Libraries Suite. This section provides some general system configuration and preventative maintenance procedures that you, the customer, are responsible for. In general, the M9536A operates as any other PC, including remote desktop access.

The Windows operating system supplied with your M9536A is licensed for use on the SSD mounted to the controller. If the SSD is replaced, you may be responsible to purchase or relicense the operating system.

## Windows Security

If your system is connected to the internet, you should take the following steps to ensure the operating system is protected:

- Use an internet firewall
- Get the latest Windows updates
- Install and use up-to-date antivirus software.

To check the status of, or make changes to, the security settings for your controller, open the Windows Security Center (**Start > Control Panel > Security Center**).

The default system setting is to not automatically check for critical Windows updates and notify you, if the controller has internet access. You can change the configuration of the Microsoft Automatic Updates to notify you of updates, in which case you would need to manually update windows operating system by accessing **Internet Explorer** and from the **Tools** menu, select **Windows Update**.

**NOTE**

Downloading and installing Windows Updates can be network and CPU intensive (impacting system performance) and some Windows Updates automatically reboot the controller. Therefore, Windows updates should be performed when the system is not in normal use.

**NOTE**

There is no antivirus or spyware software included with your controller. Antivirus application software is the customer's responsibility. Having antivirus software installed may have a slight impact on system performance if your system uses intensive network data transfer.

## User data backup

All user data should be regularly backed up to an external memory device. This can be done across a network or to a USB device. Your IT department may already have a backup strategy which is suitable for the system and data. Also, user data back up should be done just prior to sending the controller back to Keysight for service.

## Create a System Repair disc

If you are unable to boot the M9536A, you may need to use a System Repair disc. You are responsible to create this disc. Refer to the M9536A User Guide for additional information.

### NOTE

You will need a separate USB CD/DVD ROM drive to create and use the System Repair disc.

---

## Create a System Image

You should create a System Image as a backup in case you ever need to reinstall the operating system. You should regularly create a system image so that all data, applications, etc. have backups.

Use the Windows Backup tool to create a backup system image on an external (USB) hard drive. To start the backup, click on the **Windows Start** button, then type “**Back Up**” in the search field. Select the “**Back up your Computer**” link then click on the “**Create a system image**” link. Refer to the M9536A User Guide for detailed information on system back up including instructions to unhide the Keysight Recovery Partition.

There is a small system partition for the Keysight Recovery System on the SSD. During the boot process, you are given the choice to boot the operating system normally or boot from the recovery partition.

### NOTE

Some third-party disk backup utilities may destroy the Keysight backup partition. If this happens, the Keysight Recovery System will not work.

---

## Step 4: Run Keysight IO Libraries Suite


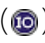
### NOTE

The Keysight IO Libraries version available at time of shipment was pre-installed on the controller. It must be installed prior to installing and running any application software. You should regularly check for, download and install the latest version. The latest version can be downloaded from:

[www.Keysight.com/find/iosuite](http://www.Keysight.com/find/iosuite).

### NOTE

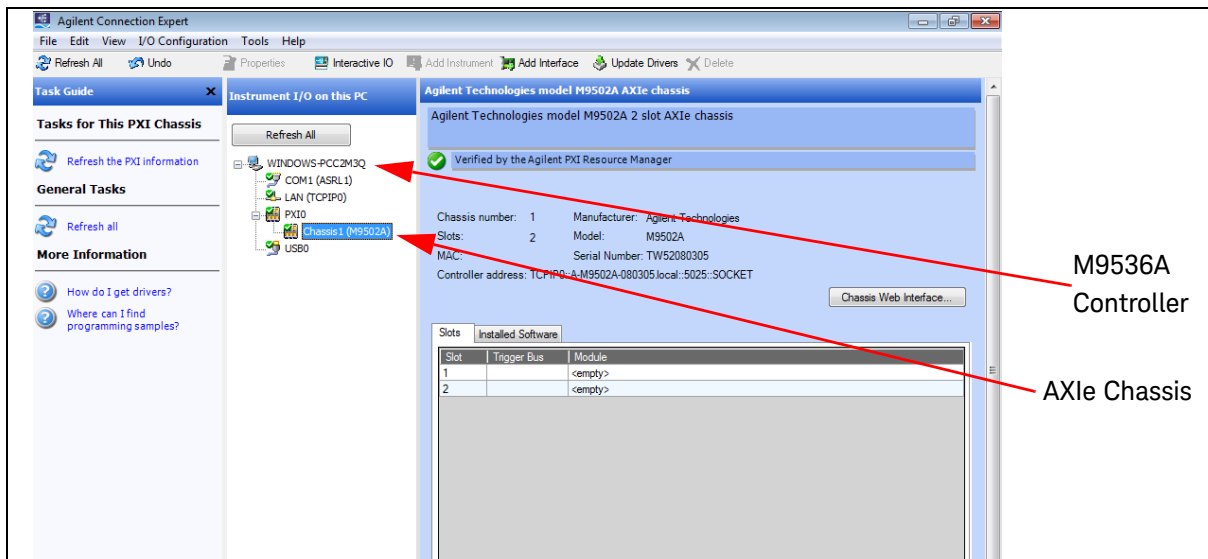
Keysight IO Libraries installs the **IVI Shared Components** and **VISA Shared Components** on your PC.

If Connection Expert is not already running, run it now to verify your I/O configuration. From the Windows Start button, click the IO Libraries icon (  ) or from the Task bar, click the Keysight Connection Expert icon (  ) (earlier versions of IO Libraries used a different icon).

Locate your interfaces and instruments in the Keysight Connection Expert Explorer Pane. The following graphic shows the Connection Expert screen.

### NOTE

With Keysight IO Libraries 16.2 (and later versions) Keysight Connection Expert should automatically identify the AXIe chassis. With Keysight IO Libraries version 16.1, you may need to start Connection Expert, then power down the controller and chassis and reboot them in order for Connection Expert to identify the AXIe chassis.



Note that the chassis appears under the PXIO interface. Refer to the Keysight IO Libraries Suite documentation and the M9536A User Guide for information on using the IO Libraries.



## Step 5. Verify Operation

There are no actual verification procedures for the M9536A Embedded Controller. If it boots properly, then the controller is working normally.

However, from Keysight Connection Expert (see Step 4 above), you can access the M9502A/M9505A Chassis Web page and from there you can find the M9536A version information and sensor diagnostic information. For detailed instructions, refer to the M9536A User Guide.

## Step 6: Install User Application Modules in the AXIe Chassis

The AXIe chassis accepts modules conforming to the AXIe standard, which can usually be installed in any available slot in the chassis. These may include:

- AXIe instrument or instrument hub modules
- AXIe embedded controller module (must be installed in chassis slot 1)
- AXIe filler panel modules

The insertion and removal procedures are the same for the 2-slot and 5-slot chassis, and for all module types except filler panels.

### NOTE

Periodically check for the latest AXIe chassis firmware:

[www.Keysight.com/find/M9502A](http://www.Keysight.com/find/M9502A) or  
[www.Keysight.com/find/M9505A](http://www.Keysight.com/find/M9505A)

For example, Keysight's AXIe chassis firmware version 1.3.23 (and later) provides for enhanced fan control and E-Keying that was not supported in earlier chassis firmware versions.

### CAUTION

**Static Electricity**—The components and connectors on modules are sensitive to static electricity. To minimize electrostatic damage, take the necessary anti-static precautions. Both chassis provide a grounding terminal, to which you can connect a wrist strap.

**Empty Slots**—Except for performing initial chassis verification or troubleshooting, do not operate the chassis with uncovered empty slots. Always insert a filler panel module or instrument module into empty slots. This is especially important for the slots on either side of an instrument module. This allows proper air flow and cooling, and provides EMI shielding for the chassis and installed components. Leaving empty slots uncovered can increase fan speed, raise ambient noise, overheat components, and shut down modules.

**ESM**—The Embedded System Manager (ESM) Module is integral to the operation of the AXIe chassis. Except for troubleshooting purposes, do not remove the ESM.

**Hot Swap**—AXIe does not explicitly support hot swap for instrument modules. Keysight recommends fully powering down and unplugging the chassis before installing or removing modules

AXIe chassis are shipped with filler panel modules on all but Slot 1; you may need to remove filler panels from covered slots.

**CAUTION**

Certain modules require bus master and/or Rear I/O capability. If you are in doubt whether such features are required for the module you intend to install, please check your specific module and/or system documentation to make sure that your system is provided with an appropriate free slot in which to insert the board.

---

## Install application module drivers (if necessary)

Each installed application module will typically require device drivers and control software. You need not install them to verify basic chassis operation, but would logically install them on the host PC at this time. For others, consult the module provider for software requirements and instructions.

**NOTE**

You may need to connect the embedded controller to the internet. Locate and install the necessary drivers from the internet.

---

## Chassis shutdown

As with any PC, Windows-based instruments should never be shutdown by turning off the power via an external power source or by pulling the power plug out from the rear panel. This could corrupt the operating system. The only approved way to shut down the controller is to execute the Windows shutdown process. After Windows has completely shutdown (indicated by no activity on the hard disk drive light), turn off the chassis via the chassis On/Off button.

## Controller BIOS

As of this printing, two versions of BIOS are available for the M9536A -- AG10 and AG16. The only significant difference between AG10 and AG16 is that AG16 BIOS allows the M9536A AXIe Embedded Controller to properly enumerate large PCIe systems, including up to three M9514A AXIe 14-slot Chassis. To determine which version is currently installed in your M9536A:

- 1 Turn chassis power off and then on again.
- 2 At startup, press the **Delete** key when the Keysight Splash screen appears. This opens the BIOS menu Main page displaying the currently installed version of BIOS.

### NOTE

BIOS AG16 may be installed only on an M9536A running Microsoft Windows Embedded Standard 7 (WES 7) Operating System. BIOS AG10 of the M9536A BIOS can be installed on the M9536A using either Windows 7 Pro or WES 7. Refer to the User Guide for more information.

---

## Environmental Operating Conditions

The Keysight M9536A AXIe Embedded Controller is designed to operate in a temperature range of 0°C to +50°C with non-condensing humidity. The maximum humidity is 95% at +40 °C. The maximum operating altitude is 3000 m (9800 ft). The module should be operated in an indoor environment where temperature and humidity are controlled. Condensation can pose a potential shock hazard.

Condensation can occur when the module is moved from a cold to a warm environment, or if the temperature and/or humidity of the environment change quickly.

Samples of this product have been type tested in accordance with the Keysight Environmental Test Manual and verified to be robust against the environmental stresses of storage, transportation and end-use. Those stresses include but are not limited to temperature, humidity, shock, vibration, altitude and power line conditions. For complete specifications, check the Keysight web site at: [www.Keysight.com/find/M9536A](http://www.Keysight.com/find/M9536A).



myKeysight

[www.keysight.com/find/mykeysight](http://www.keysight.com/find/mykeysight)

A personalized view into the information most relevant to you.



Advanced TCA® Extensions for Instrumentation and Test (AXIe) is an open standard that extends the Advanced TCA for general purpose and semiconductor test. Keysight is a founding member of the AXIe consortium.

[www.axistandard.org](http://www.axistandard.org)



LAN eExtensions for instruments puts the power of Ethernet and the Web inside your test systems. Keysight is a founding member of the LXI consortium.

[www.lxistandard.org](http://www.lxistandard.org)



PCI eExtensions for Instrumentation (PXI) modular instrumentation delivers a rugged PC-based high-performance measurement and automation platform.

[www.pxisa.org](http://www.pxisa.org)



[www.keysight.com/find/ThreeYearWarranty](http://www.keysight.com/find/ThreeYearWarranty)

Keysight's combination of product reliability and three-year warranty coverage is another way we help you achieve your business goals: increased confidence in uptime, reduced cost of ownership and greater convenience.

#### Keysight Assurance Plans

Keysight Advantage Services

[www.keysight.com/find/AssurancePlans](http://www.keysight.com/find/AssurancePlans)



Five years of protection and no budgetary surprises to ensure your instruments are operating to specifications and you can continually rely on accurate measurements.



[www.keysight.com/quality](http://www.keysight.com/quality)



Keysight Electronic Measurement Group DEKRA Certified ISO 9001:2008 Quality Management System

#### Keysight Channel Partners

[www.keysight.com/find/channelpartners](http://www.keysight.com/find/channelpartners)

Get the best of both worlds: Keysight's measurement expertise and product breadth, combined with channel partner convenience.

[www.keysight.com](http://www.keysight.com)

[www.keysight.com/find/modular](http://www.keysight.com/find/modular)

[www.keysight.com/find/pxi-switch](http://www.keysight.com/find/pxi-switch)

For more information on Agilent Technologies' products, applications or services, please contact your local Agilent office. The complete list is available at: [www.keysight.com/find/assist](http://www.keysight.com/find/assist)

For other unlisted Countries:

[www.keysight.com/find/contactus](http://www.keysight.com/find/contactus)

