

# Agilent Technologies

## PXI-H 10-bit UWB IF Digitizer

M9211A

## Startup Guide

*Anticipate — Accelerate — Achieve*



**Agilent Technologies**

## Notices

© 2011-2012 Agilent Technologies, Inc.

No part of this manual may be reproduced in any form or by any means (including electronic storage and retrieval or translation into a foreign language) without prior agreement and written consent from Agilent Technologies, Inc. as governed by United States and international copyright laws.

### Manual Part Number M9211-90001

### Edition

21 November 2012

### Sales and Technical Support

To contact Agilent for sales and technical support, refer to the “support” links on the following Agilent web resources:

- <http://www.agilent.com/find/embedded>
- [www.agilent.com/find/assist](http://www.agilent.com/find/assist) (worldwide contact information for repair and service)

Information on preventing damage to your Agilent equipment can be found at [www.agilent.com/find/tips](http://www.agilent.com/find/tips).

### Regulatory Compliance

This product has been designed and tested in accordance with accepted industry standards, and has been supplied in a safe condition. To review the Declaration of Conformity, go to <http://regulations.corporate.agilent.com/DoC/search.htm>.

### Warranty

The material contained in this document is provided “as is,” and is subject to being changed, without notice, in future editions. Further, to the maximum extent permitted by applicable law, Agilent disclaims all warranties, either express or implied, with regard to this manual and any information contained herein, including but not limited to the implied warranties of merchantability and fitness for a particular purpose. Agilent

shall not be liable for errors or for incidental or consequential damages in connection with the furnishing, use, or performance of this document or of any information contained herein. Should Agilent and the user have a separate written agreement with warranty terms covering the material in this document that conflict with these terms, the warranty terms in the separate agreement shall control.

### Technology Licenses

The hardware and/or software described in this document are furnished under a license and may be used or copied only in accordance with the terms of such license.

### Restricted Rights Legend

If software is for use in the performance of a U.S. Government prime contract or subcontract, Software is delivered and licensed as “Commercial computer software” as defined in DFAR 252.227-7014 (June 1995), or as a “commercial item” as defined in FAR 2.101(a) or as “Restricted computer software” as defined in FAR 52.227-19 (June 1987) or any equivalent agency regulation or contract clause. Use, duplication or disclosure of Software is subject to Agilent Technologies’ standard commercial license terms, and non-DOD Departments and Agencies of the U.S. Government will receive no greater than Restricted Rights as defined in FAR 52.227-19(c)(1-2) (June 1987). U.S. Government users will receive no greater than Limited Rights as defined in FAR 52.227-14 (June 1987) or DFAR 252.227-7015 (b)(2) (November 1995), as applicable in any technical data.

### Safety Notices

The following safety precautions should be observed before using this product and any associated instrumentation.

This product is intended for use by qualified personnel who recognize shock hazards and are familiar with the safety precautions required to avoid possible injury. Read and follow all installation, operation, and maintenance information carefully before using the product.

### WARNING

**If this product is not used as specified, the protection provided by the equipment could be impaired. This product must be used in a normal condition (in which all means for protection are intact) only.**

The types of product users are:

- **Responsible body** is the individual or group responsible for the use and maintenance of equipment, for ensuring that the equipment is operated within its specifications and operating limits, and for ensuring operators are adequately trained.
- **Operators** use the product for its intended function. They must be trained in electrical safety procedures and proper use of the instrument. They must be protected from electric shock and contact with hazardous live circuits.
- **Maintenance personnel** perform routine procedures on the product to keep it operating properly (for example, setting the line voltage or replacing consumable materials). Maintenance procedures are described in the user documentation. The procedures explicitly state if the operator may perform them. Otherwise, they should be performed only by service personnel.
- **Service personnel** are trained to work on live circuits, perform safe installations, and repair products. Only properly trained service personnel may perform installation and service procedures.

Agilent products are designed for use with electrical signals that are rated Measurement Category I and Measurement Category II, as described in the International Electrotechnical Commission (IEC) Standard IEC 60664. Most measurement, control, and data I/O signals are Measurement Category I and must not be directly connected to mains voltage or to voltage sources with high transient over-voltages. Measurement Category II connections require protection for high transient over-voltages often

associated with local AC mains connections. Assume all measurement, control, and data I/O connections are for connection to Category I sources unless otherwise marked or described in the user documentation.

Exercise extreme caution when a shock hazard is present. Lethal voltage may be present on cable connector jacks or test fixtures. The American National Standards Institute (ANSI) states that a shock hazard exists when voltage levels greater than 30V RMS, 42.4V peak, or 60VDC are present. A good safety practice is to expect that hazardous voltage is present in any unknown circuit before measuring.

Operators of this product must be protected from electric shock at all times. The responsible body must ensure that operators are prevented access and/or insulated from every connection point. In some cases, connections must be exposed to potential human contact. Product operators in these circumstances must be trained to protect themselves from the risk of electric shock. If the circuit is capable of operating at or above 1000V, no conductive part of the circuit may be exposed.

Do not connect switching cards directly to unlimited power circuits. They are intended to be used with impedance-limited sources. NEVER connect switching cards directly to AC mains. When connecting sources to switching cards, install protective devices to limit fault current and voltage to the card.

Before operating an instrument, ensure that the line cord is connected to a properly-grounded power receptacle. Inspect the connecting cables, test leads, and jumpers for possible wear, cracks, or breaks before each use.

When installing equipment where access to the main power cord is restricted, such as rack mounting, a separate main input power disconnect device must be provided in close proximity to the equipment and within easy reach of the operator.

For maximum safety, do not touch the product, test cables, or any other instruments while power is applied to the circuit under test. ALWAYS remove power

from the entire test system and discharge any capacitors before: connecting or disconnecting cables or jumpers, installing or removing switching cards, or making internal changes, such as installing or removing jumpers.

Do not touch any object that could provide a current path to the common side of the circuit under test or power line (earth) ground. Always make measurements with dry hands while standing on a dry, insulated surface capable of withstanding the voltage being measured.

The instrument and accessories must be used in accordance with its specifications and operating instructions, or the safety of the equipment may be impaired.

Do not exceed the maximum signal levels of the instruments and accessories, as defined in the specifications and operating information, and as shown on the instrument or test fixture panels, or switching card.

When fuses are used in a product, replace with the same type and rating for continued protection against fire hazard.

Chassis connections must only be used as shield connections for measuring circuits, NOT as safety earth ground connections.

If you are using a test fixture, keep the lid closed while power is applied to the device under test. Safe operation requires the use of a lid interlock.

## Caution and Warning Notices

### CAUTION

A CAUTION notice denotes a hazard. It calls attention to an operating procedure, practice, or the like that, if not correctly performed or adhered to, could result in damage to the product or loss of important data. Do not proceed beyond a CAUTION notice until the indicated conditions are fully understood and met.

### WARNING

A WARNING notice denotes a hazard. It calls attention to an operating procedure, practice, or the like that, if not correctly performed or adhered to, could result in personal injury or death. Do not proceed

**beyond a WARNING notice until the indicated conditions are fully understood and met.**

Instrumentation and accessories shall not be connected to humans.

Before performing any maintenance, disconnect the line cord and all test cables.

To maintain protection from electric shock and fire, replacement components in mains circuits – including the power transformer, test leads, and input jacks – must be purchased from Agilent. Standard fuses with applicable national safety approvals may be used if the rating and type are the same. Other components that are not safety-related may be purchased from other suppliers as long as they are equivalent to the original component (note that selected parts should be purchased only through Agilent to maintain accuracy and functionality of the product). If you are unsure about the applicability of a replacement component, call an Agilent office for information.

## Cleaning Precautions:

### WARNING

**To prevent electrical shock, disconnect the Agilent Technologies instrument from mains before cleaning. Use a dry cloth or one slightly dampened with water to clean the external case parts. Do not attempt to clean internally. To clean the connectors, use alcohol in a well-ventilated area. Allow all residual alcohol moisture to evaporate, and the fumes to dissipate prior to energizing the instrument.**

## Front and Rear Panel Symbols:



The CE mark is a registered trademark of the European Community.



**N10149** The C-Tick mark is a registered trademark of the Australian Spectrum Management Agency.



This symbol indicates product compliance with the Canadian Interference-Causing Equipment Standard (ICES-001). It also identifies the product is an Industrial Scientific and Medical Group 1 Class A product (CISPR 11, Clause 4).



South Korean Class A EMC Declaration. this equipment is Class A suitable for professional use and is for use in electromagnetic environments outside of the home.

A 급 기기 ( 업무용 방송통신기자재 )  
이 기기는 업무용 ( A 급 ) 전자파적합기  
기로서 판 매자 또는 사용자는 이 점을  
주  
의하시기 바라 며 , 가정외의 지역에서  
사용하는 것을 목적으로 합니다 .



This symbol indicates separate collection for electrical and electronic equipment, mandated under EU law as of August 13, 2005. All electric and electronic equipment are required to be separated from normal waste for disposal (Reference WEEE Directive, 2002/96/EC).



This symbol on an instrument means caution, risk of danger. You should refer to the operating instructions located in the user documentation in all cases where the symbol is marked on the instrument.



This symbol indicates the time period during which no hazardous or toxic substance elements are

expected to leak or deteriorate during normal use. Forty years is the expected useful life of the product.



This symbol indicates the instrument is sensitive to electrostatic discharge (ESD). ESD can damage the highly sensitive components in your instrument. ESD damage is most likely to occur as the module is being installed or when cables are connected or disconnected. Protect the circuits from ESD damage by wearing a grounding strap that provides a high resistance path to ground. Alternatively, ground yourself to discharge any built-up static charge by touching the outer shell of any grounded instrument chassis before touching the port connectors.



This symbol denotes a hot surface. The side cover of the module will be hot after use and should be allowed to cool for several minutes.

## Table of Contents

---

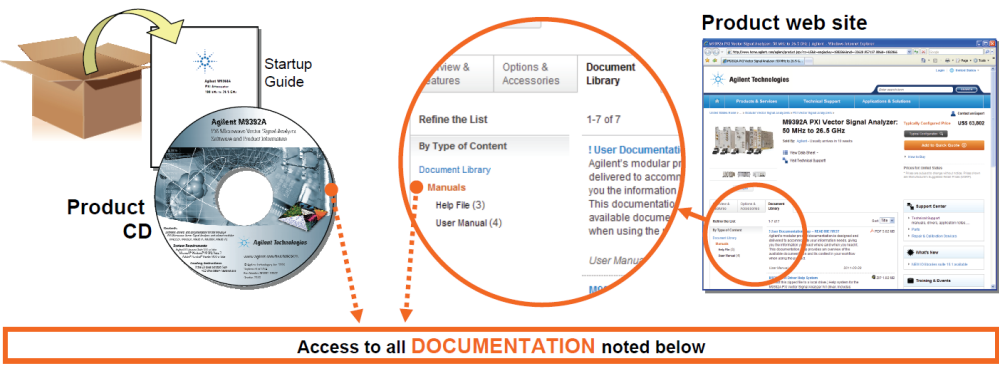
	1
Documentation Map .....	6
Agilent M9211A Introduction .....	7
Related Documentation .....	7
Follow the Startup Sequence .....	7
Step 1: Unpack and Inspect the Module .....	8
Inspect for damage .....	8
Return the module for service .....	8
Step 2: Verify the M9211A Shipment Contents .....	9
Step 3: Install the Software .....	10
Step 4: Install the Module .....	12
M9211A Front Panel Features .....	13
Front Panel Connectors .....	13
Front Panel LED .....	13
Step 5: Verify Operation of the M9211A Module .....	14
Conducting a Self-Test .....	15
Conduct M9211A Operational check (optional) .....	16
Requirements for Verification .....	16
Required Hardware .....	16
Operational Verification Procedure .....	16
If a Problem is Found .....	17

## Table of Figures

---

Figure 1 - A typical ESD workstation .....	8
Figure 2 - Shipment contents table .....	9
Figure 3 - Installing a module into a PXI chassis .....	12
Figure 4 - Agilent Connection Expert (ACE) .....	14
Figure 5 - Soft Front Panel (SFP) showing the result of the Self-Test .....	15
Figure 6 - SFP showing measured waveform .....	17

# Documentation Map



### Startup Guide



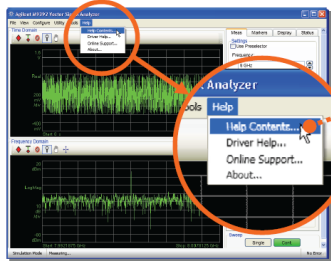
- Unpack product
- Verify shipment
- Install software
- Verify operation
- Troubleshooting

### Data Sheet

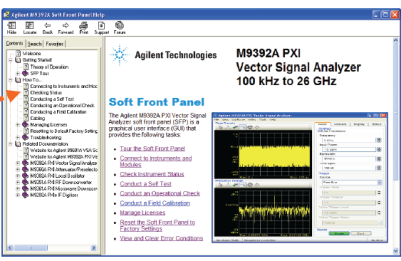


- Product description
- Technical specifications

### Soft Front Panel (SFP) user interface

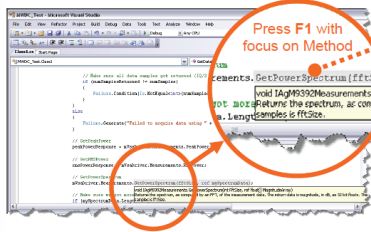


### SFP help system



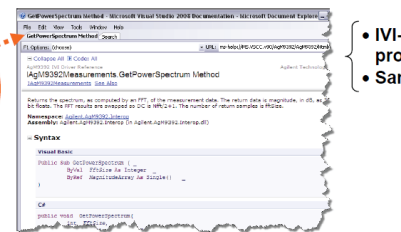
- Theory of operation
- Block diagram
- Configuration
- Self test
- Operational check
- Field calibration
- Troubleshooting

### Visual Studio



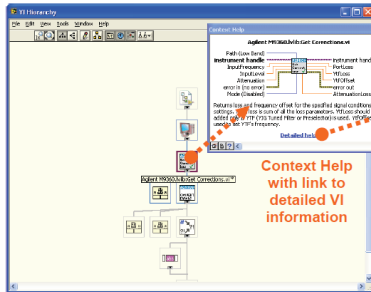
Press F1 with focus on Method

### IVI Driver help system



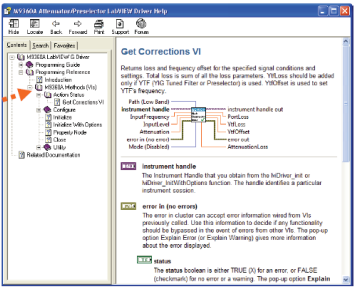
- IVI-COM and IVI-C driver programmer's reference
- Sample programs

### LabVIEW



Context Help with link to detailed VI information

### LabVIEW Driver help system



- LabVIEW driver programmer's reference
- Sample programs

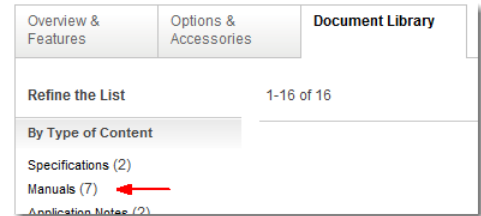
# Agilent M9211A Introduction

The scope of this Startup Guide is to detail the processes of receiving and installing the Agilent M9211A PXI-H 10-bit UWB IF Digitizer, installing the required software, and verifying basic module operation. If you have any questions after reviewing this information, please contact your local Agilent representative or contact us through our website at [www.agilent.com/find/assist](http://www.agilent.com/find/assist)

## Related Documentation

This Startup Guide and the documentation listed below are on the CD and at [www.agilent.com/find/M9211A](http://www.agilent.com/find/M9211A). Select **Technical Support > Manuals**.

- Help system for the Soft Front Panel
- Help systems for the device drivers (IVI-C and IVI-COM, and LabVIEW G)
- Specifications (Data Sheet)



## Follow the Startup Sequence

This Start-Up Guide is intended to lead the user through the four steps of product installation as summarized in the diagram below. An optional fifth step shows how to perform an operational verification of the M9211A.

### Step 1: Unpack and Inspect



### Step 2: Verify Shipment



### Step 3: Install Drivers and Software



### Step 4: Install Modules



### WARNING

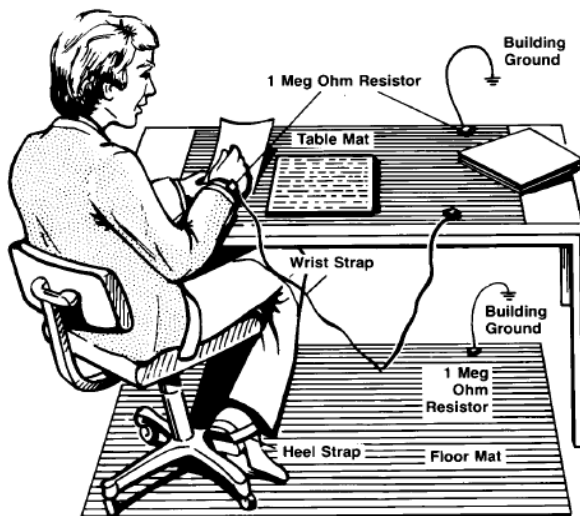
Closely follow the startup process flow in this document. Deviating from the sequence can cause unpredictable system behavior, damage your system, and may cause personal injury.

## Step 1: Unpack and Inspect the Module

### CAUTION

The module is shipped in materials which prevent damage from static. The module should only be removed from the packaging in an anti-static area ensuring that correct anti-static precautions are taken. Store all modules in anti-static envelopes when not in use.

## ESD Precautions



Electrostatic discharge (ESD) can damage or destroy electronic components. Use a static-safe work station to perform all work on electronic assemblies. The figure (left) shows a static-safe work station using two types of ESD protection: conductive table-mat and wrist-strap combination, and conductive floor-mat and heel-strap combination. Both types, when used together, provide a significant level of ESD protection. Of the two, only the table-mat and wrist-strap combination provides adequate ESD protection when used alone. To ensure user safety, the static-safe accessories must provide at least 1 M $\Omega$  of isolation from ground.

Figure 1 - A typical ESD workstation

## Inspect for damage

After unpacking the module, carefully inspect it for any shipping damage. Report any damage to the shipping agent immediately, as such damage is not covered by the warranty. Warranty information for your product can be found at: [www.agilent.com/find/warranty](http://www.agilent.com/find/warranty).

Information on preventing damage to your Agilent equipment can be found at [www.agilent.com/find/tips](http://www.agilent.com/find/tips).

### CAUTION

To avoid damage when handling a module, do not touch exposed connector pins.

## Return the module for service

Should it become necessary to return the M9211A module for repair or service, follow the steps below:

1. Review the warranty information shipped with your product.
2. Contact Agilent for instructions on the return of equipment for repair. If you need assistance finding Agilent contact information go to [www.agilent.com/find/assist](http://www.agilent.com/find/assist) (worldwide contact information for repair and service) or refer to the “Support” information on the product web page at [www.agilent.com/find/PXI-Digitizers](http://www.agilent.com/find/PXI-Digitizers).
3. Write the following information on a tag and attach it to the malfunctioning equipment.
  - Name and address of owner. A P.O. box is not acceptable as a return address.
  - Product model number (for example, M9211A).



- Product serial number (for example, USxxxxxxx). The serial number label is located on the side panel of the module. The serial number can also be read from the Soft Front Panel interface, but only after the software is installed
  - Description of failure or service required
4. If the original packing materials are not available, put the module in a sealed ESD bag and place that in a suitable, filled, shipping container. The shipping container must be large and strong enough to accommodate your instrument and allow at least 3 to 4 inches (8 to 10 cm) on all sides for packing material. Mark the container “FRAGILE”.

**CAUTION**

Damage can result if the original packaging materials are not used. Packaging materials should be anti-static and cushion the instrument on all sides. NEVER USE STYRENE PELLETS IN ANY SHAPE AS PACKAGING MATERIALS. They do not adequately cushion the instrument or prevent it from moving in the shipping container. Styrene pellets can also cause equipment damage by generating static electricity or by lodging in fan motors.

**NOTE**

If any correspondence is required, refer to the product by model and serial numbers.

## Step 2: Verify the M9211A Shipment Contents

The following items are included with your M9211A order:

Part Number	Quantity	Description
M9210-9007	1	Agilent MD1 High-Speed Digitizer Software and Product Information CD
E2904-60003	1	Agilent IO Libraries Suite CD.
M9211-90001	1	M9211A Startup Guide in hard copy.
5962-0476	1	Certificate of Calibration.
5959-4660	1	Recommended Due Date for Adjustment/Calibration.
M9211A-UK6	1	Commercial calibration certificate with test data (if ordered).
9320-6741	1	ROHS (China addendum).
U1092-80001	1	Cable, coaxial 50 $\Omega$ BNC-MMCX (1 m)

Figure 2 - Shipment contents table

**NOTE**

All of the files contained on the CDs are available for downloading at the Agilent website at: [www.agilent.com/find/M9211A](http://www.agilent.com/find/M9211A)

## Step 3: Install the Software

### System Requirements

Item	Requirements		
Operating system	Windows XP SP3	Windows Vista® SP1 and SP2, Windows 7® (32 or 64-bit), All versions.	Linux kernel 2.6 or higher (32 or 64-bit), Debian 6.0, CentOS 5
Processor speed	600 MHz or higher required 800 MHz recommended	1 GHz 32-bit (x86), 1 GHz 64-bit (x64), no support for Itanium64	As per the minimum requirements of the chosen distribution.
Available memory	256 MB minimum,(1 GB or greater recommended	1 GB minimum	As per the minimum requirements of the chosen distribution.
Available disk space <sup>1</sup>	1.5 GB available hard disk space, includes: <ul style="list-style-type: none"> <li>1 GB available for Microsoft .NET Framework 3.5 SP1 <sup>2</sup></li> <li>100 MB for Agilent IO Libraries Suite</li> </ul>		100 MB
Video	Super VGA (800x600) 256 colors or more	Support for DirectX 9 graphics with 128 MB graphics memory recommended (Super VGA graphics is supported)	Does not require graphics (headless system). X Windows with 1280x1024 recommended for SFP
Browser	Microsoft Internet Explorer 6.0 or higher	Microsoft Internet Explorer 7.0 or higher	Distribution supplied browser.

<sup>1</sup> Note: Because of the installation procedure, less disk space may be required for operation than is required for installation. The amount of space listed above is required for installation.

<sup>2</sup> Note: .NET Framework Runtime Components are installed by default with Windows Vista. Therefore, you may not need this amount of available disk space.

Item	Module & Chassis Requirements
Chassis	PXI, or PXIe chassis (in a hybrid slot)
PXI System / Host Controller	A remote PC Host or A PXI or PXI Express embedded controller is required
Embedded Controller	An embedded PC host controller must meet the following requirements: <ul style="list-style-type: none"> <li>PXIe System Controller (in PXIe chassis) or PXI System Controller (in PXI chassis)</li> <li>If PXIe Utilize a 2x8, 4x4, 1x8, or 1x4 PXIe System slot link configuration</li> <li>Run one of the above operating systems</li> </ul>
Remote Controller	Agilent M9021A PXIe System Interface x8 with one of the following PC interface options: <ul style="list-style-type: none"> <li>Agilent M9045A PCIe ExpressCard Adaptor x1, with cable (for laptops)</li> <li>Agilent M9047A PCIe Desktop Adaptor x8, with cable (for desktop PCs)</li> </ul> Or an equivalent remote controller connected to a PC running one of the above operating systems.

### Power up the Controller

If you are using a remote controller, power up the host computer.

If you are using an embedded controller, complete the following steps:

1. Install the embedded controller module into the compatible chassis (Agilent M9018A chassis recommended).
2. Connect peripherals (mouse, keyboard, monitor).
3. Power up the chassis.

## Install the Software

The M9211A PXI-H 10-bit UWB IF Digitizer module software is located on the Agilent MD1 High-Speed Digitizer Software and Product Information CD CD (M9210-90007) and the Agilent IO Library Suite CD (E2904-60003). This software is also available for download at the Agilent website [www.agilent.com/find/PXI-Digitizers](http://www.agilent.com/find/PXI-Digitizers)

**NOTE**

Administrator privileges will be needed for software and hardware installation. This includes the case of first-time installation of a module in a different crate slot.

This installation includes the following:

- Agilent IO Library Suite (IOLS), which includes the Agilent Connection Expert. This software must be installed first.

**NOTE**


Version 16.2 (or newer) of the Agilent IO Libraries Suite is required.

- Soft Front Panel (SFP), device drivers (IVI-C, IVI-COM, and LabVIEW G) for all modules.
1. From the Agilent IOLS CD (E2904-60003) browser launch the installer.
  2. Follow the installer prompts to install the IO Library Suite.
  3. From the Agilent MD1 High-Speed Digitizer Software and Product Information CD CD (M9210-90007) launch the installer.
  4. Follow the installer prompts to install all software and documentation.
  5. After installation is complete, re-start the chassis and the host PC if you are using a remote controller.

## Step 4: Install the Module

**CAUTION**

PXI hardware does not support "hot-swap" operation. Before installing the module into the chassis, power off the chassis to prevent damage to the module.

- ③ The module can be installed in any standard PXI slot marked with a peripheral slot compatibility image (a circle containing the slot number).
  - ⑦<sup>H</sup> The module can also be installed in any hybrid PXIe slot marked with a peripheral slot compatibility image (the letter "H" and a solid circle containing the slot number).
1. Make sure the chassis is connected to the main supply, but power switch is in the Off (Standby) position.
  2. If the chassis has multiple fan speed settings, ensure that the fans are set to automatic. Do not set the fan speed to low or turn it off.
  3. Position the chassis so that there is ample space between the chassis fan intake and exhaust vents.
  4. If using a remote controller, install the System Interface Card in the slot identified by the triangle symbol: 
  5. Install the module into the appropriate slot of the chassis by placing the module card edges into the front module guides (top and bottom). Ensure that the ejector handle is pushed down and slide it to the rear.
  6. When resistance is felt, latch the module by pulling up on the ejector handle.

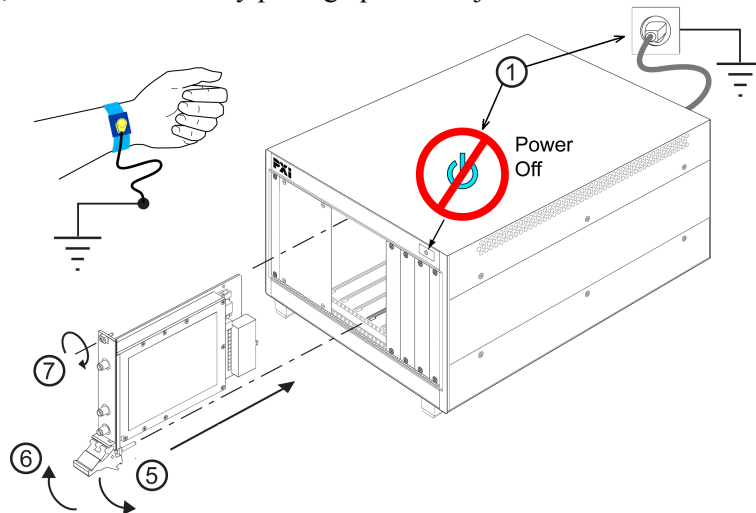


Figure 3 - Installing a module into a PXI chassis

7. Tighten the screws on the module front panel. Performance may suffer if the screws are not tightened.
8. Verify that the chassis fans are operable and free of dust and other contaminants that may restrict airflow.
9. Install all chassis covers and filler panels after installing the module. Missing filler panels may disrupt necessary air circulation in the chassis.
10. Plug in and power up the PXI chassis. (If you are using a remote controller, reboot the host PC.)
11. Check the status LED on the module front panel. It should be orange or red when the power is applied. If not, there is a problem with either the module or the chassis.
12. Follow the New Hardware Wizard's instructions to install the driver.
13. Reboot the system.





## M9211A Front Panel Features



### Front Panel Connectors

Connector	Description
<b>INPUT</b>	This SMA female connector is the analog signal input. This input is DC-coupled, 50 $\Omega$ terminated and provide 3 GHz instantaneous analog bandwidth. The input full scale range is 1 V (+4 dBm). Frequency range: DC to 3 GHz.
<b>TRIGGER IN</b>	This SMA female connector is a 50 $\Omega$ terminated input for an external trigger signal. The trigger frequency range is DC to 1 GHz, full scale (FS) is 0.5/1/2/5 V and threshold adjust range $\pm$ FS/2.
<b>I/O A</b>	This MMCX female connector provides access to an I/O digital control line for monitoring or modifying the Digitizing Scope status and configuration or extracting a 10 MHz clock reference signal.
<b>CLK IN</b>	This MMCX female connector is used for the external reference or the external clock signal input. The external reference clock frequency is 10 MHz. The external clock signal frequency range is 200 MHz to 2 GHz. In either case the amplitude should be 500 mV pk-pk or higher. Maximum DC voltage should not exceed $\pm$ 5 V.
<b>I/O B</b>	This MMCX female connector provides access to an I/O digital control line for monitoring or modifying the Digitizing Scope status and configuration or extracting a 10 MHz clock reference signal.
<b>TRG OUT</b>	This MMCX female connector features a trigger signal output.

### Front Panel LED

LED	Description
<b>STATUS</b>	<div>  (off)           Power is not present or the module has a fault.         </div>
	<div>  (green)           Indicates that the trigger is armed and waiting for a valid trigger to occur.         </div>
	<div>  (red)           Indicates that a trigger has occurred, and the acquisition is complete.         </div>
	<div>  (yellow)           Identifies the module associated with the current channel in the Soft Front Panel when the 'Identify' function is used.         </div>

#### CAUTION

The maximum input to the input connector (INPUT) must not exceed +27 dBm into 50  $\Omega$ .

## Step 5: Verify Operation of the M9211A Module

The intention of this step is to verify correct operation of the newly installed module.

1. Run Agilent Connection Expert (from the desktop icon, or from **Start > Programs > Agilent IO Library Suite > Agilent Connection Expert**). It will display the modules that are installed.
2. Check that the M9211A module is recognized.
3. Select the M9211A module and check that the correct Model Name appears in the Instrument Properties.
4. Select the 'Installed Software' tab and review the configuration data (as shown below).
5. You have the option of using either the older SFP 1.x or the newer SFP 5.x by selecting from the list and clicking on the 'Start SFP' button. This will provide control of the module for self test and other operational verification procedures.

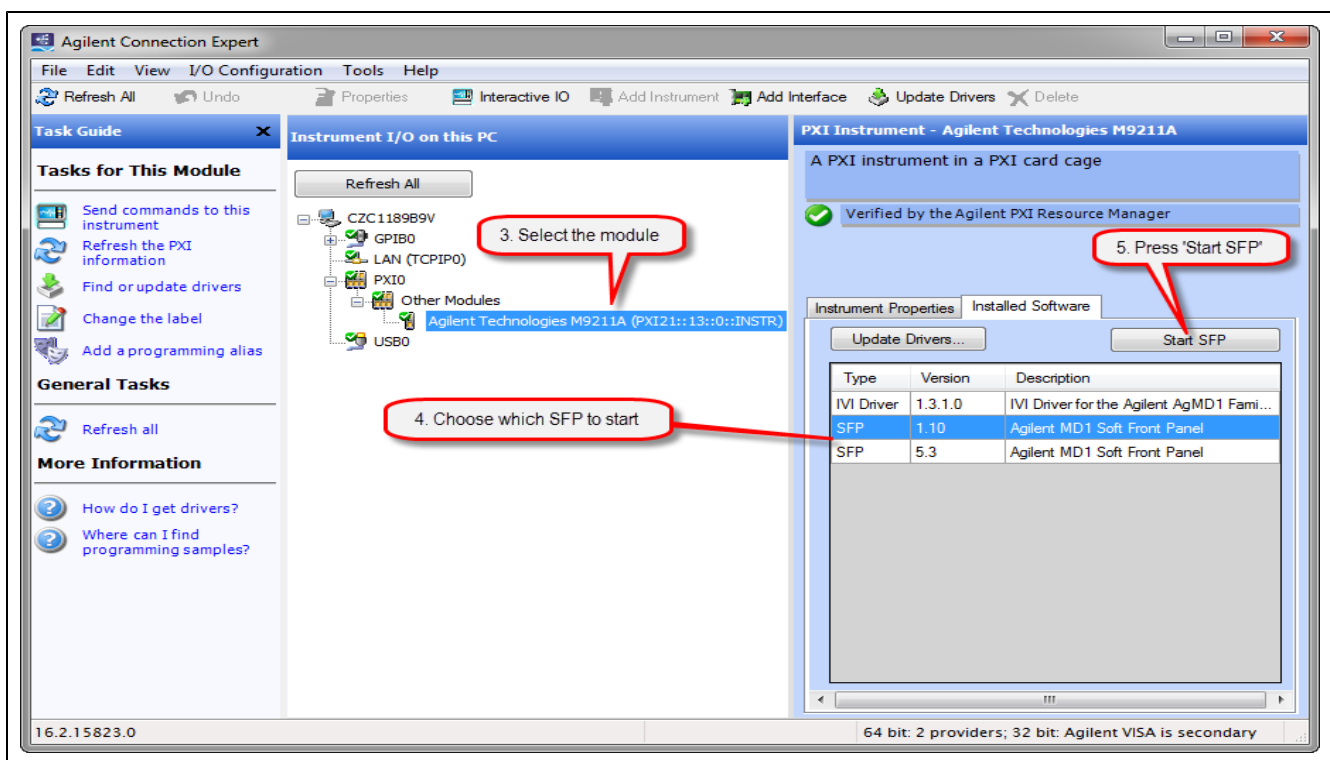


Figure 4 - Agilent Connection Expert (ACE)

## Conducting a Self-Test

The purpose of this self-test is to verify that the unit functions correctly, in that it can self-calibrate and communicate with the processor controlling it.

When the SFP is launched it will initiate a self-calibration.

Verify that no error is shown in the lower left hand log area. The image below shows the desired result.

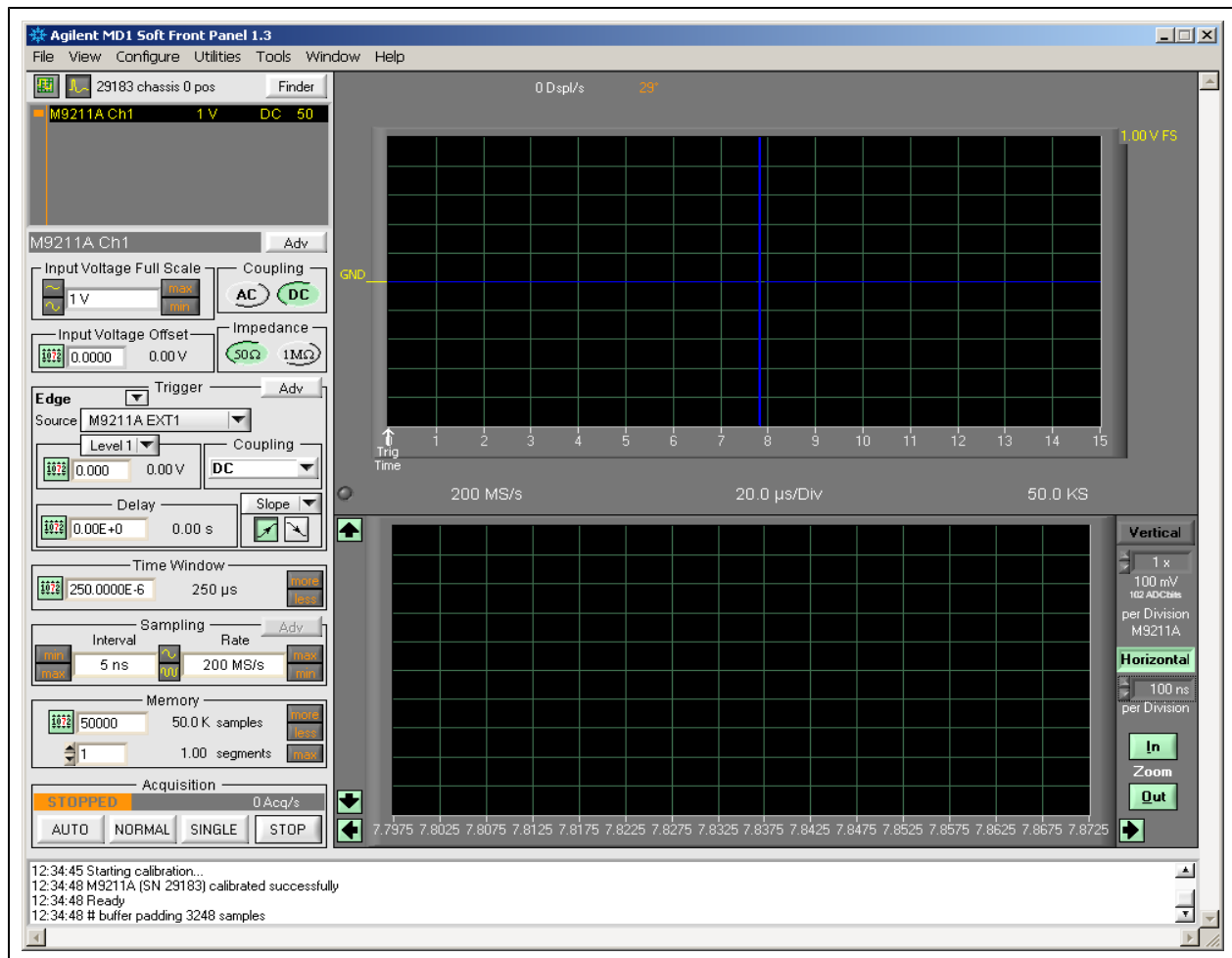


Figure 5 - Soft Front Panel (SFP) showing the result of the Self-Test

## Conduct M9211A Operational check (optional)

### Requirements for Verification

The M9211A is verified by using it to trigger on and visualize a signal from a Function Generator. The trigger must be stable and the signal frequency and amplitude must correspond to that set on the generator.


### Required Hardware

To verify that the module works requires an external signal source. Almost any sine wave or function generator capable of generating a signal with a Peak-Peak Amplitude in the range 0.5-0.95 V at a frequency in the range 1-100 MHz can be used. The rest of this description will assume that an Agilent 33220A Function / Arbitrary Waveform Generator (AWG) is available for this purpose.

Hardware	Description
Agilent 33220A	20 MHz Function / Arbitrary Waveform Generator
BNC - SMA cable	50 $\Omega$ Coaxial BNC(m) - SMA(m) cable (min 20 cm)

### Operational Verification Procedure

**CAUTION** Do not exceed the maximum power level to the INPUT connector (0.5 W).

1. Launch the soft front panel (SFP). The calibration must successfully end as noted above.
2. Configure the AWG to produce a Sine signal with a Frequency of 1 MHz, an Amplitude of 800 mV pp , and an Offset of 0 V.
3. Connect the AWG Output to the INPUT connector, and turn on the Output.
4. Connect the AWG SYNC output to the TRIGGER IN connector
5. Configure the SFP for the Oscilloscope Mode. 
6. Configure the Input for:
  - Trigger Level 1 – **0.5 V**
  - Trigger Delay – **0.0**
  - Timebase – **500 ns/Div**
  - Segments – **1**
  - Memory – **50000**
  - Input Voltage Offset – **0.0**
  - Trigger Source – **M9211A EXT1**
  - Trigger Coupling – **DC**
  - Trigger Slope – **Positive**
7. Select the NORMAL Acquisition mode and the Waveform Display should be as shown below.
8. Verify that:
  - the waveform shown is stable from one acquisition to the next,
  - the voltage value at the Trigger is within 1.0 divisions of GND
  - the period of the signal is 2 divisions
  - the pk-pk amplitude is  $8 \pm 0.3$  divisions



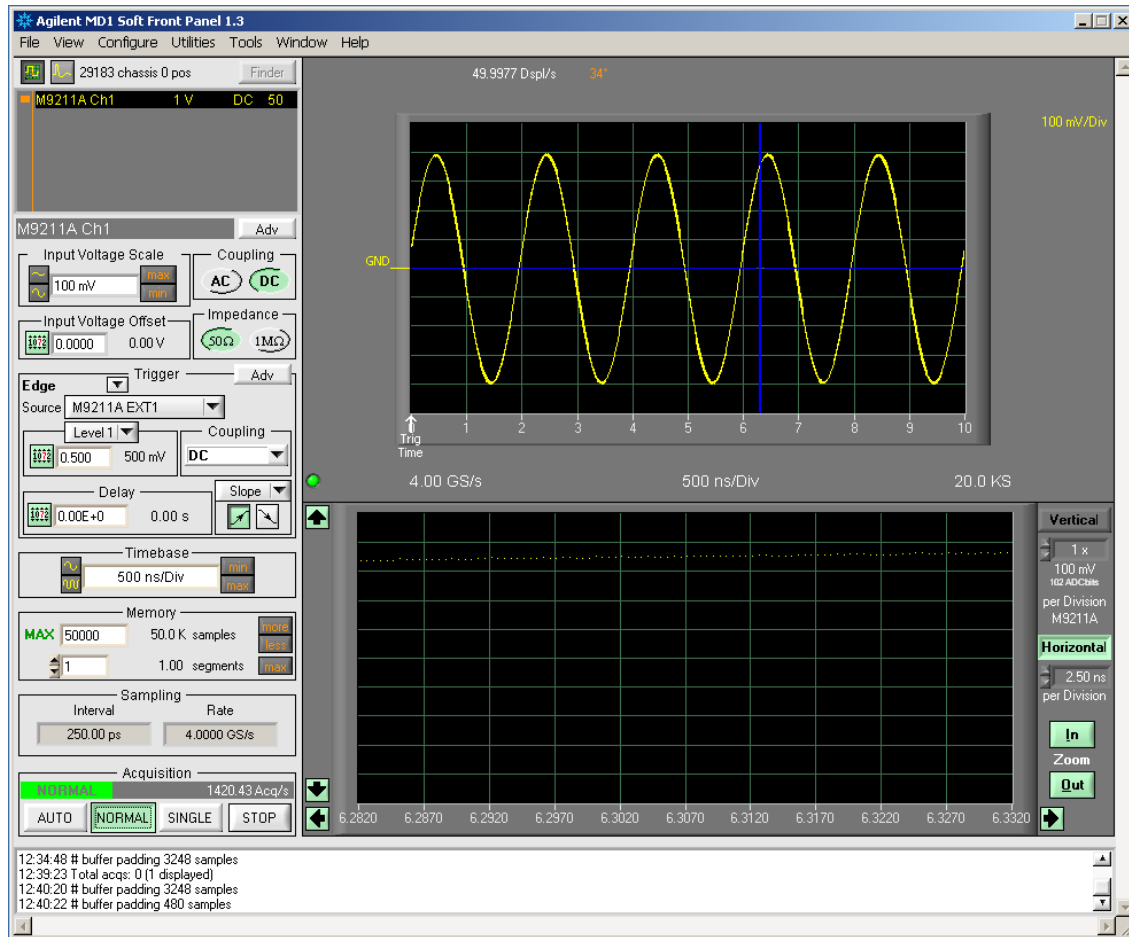


Figure 6 - SFP showing measured waveform

## If a Problem is Found

1. Verify that you have set all configuration settings as shown above.
2. Verify that the AWG is ON and producing the desired signals at the end of the BNC cables. This can be done with an oscilloscope.
3. If the problem occurs during Operational Verification disconnect the input signal and note the status of the LED on the front panel; it should be GREEN. Reconnect the signal and select the AUTO acquisition mode; note the behavior for subsequent reference.
4. Verify that the problem is reproducible.
5. Refer to ["Return the module for service"](#) on page 9, concerning the details on sending the module to Agilent for service.



## The Modular Tangram

The four-sided geometric symbol that appears in Agilent modular product literature is called a tangram. The goal of this seven-piece puzzle is to create shapes—from simple to complex. As with a tangram, the possibilities may seem infinite as you begin to create a new test system. With a set of clearly defined elements—hardware, software—Agilent can help you create the system you need, from simple to complex.



## DISCOVER the Alternatives ...

... Agilent **MODULAR** Products



**Agilent Advantage Services** is committed to your success throughout your equipment's lifetime.  
[www.agilent.com/find/advantageservices](http://www.agilent.com/find/advantageservices)



**Agilent Email Updates** keep you informed on the latest product, support and application information.  
[www.agilent.com/find/emailupdates](http://www.agilent.com/find/emailupdates)



**Agilent Channel Partners** provide sales and solutions support. For details, see  
[www.agilent.com/find/channelpartners](http://www.agilent.com/find/channelpartners)

Agilent Electronic Measurement Group

**KEMA Certified**  
**ISO 9001:2008**  
Quality Management System

ISO 9001:2008 certified. For details, see  
[www.agilent.com/quality](http://www.agilent.com/quality)



[www.pxisa.org](http://www.pxisa.org)



[www.axistandard.org](http://www.axistandard.org)

PICMG and the PICMG logo, CompactPCI and the CompactPCI logo, AdvancedTCA and the AdvancedTCA logo are US registered trademarks of the PCI Industrial Computers Manufacturers Group. "PCIe" and "PCI EXPRESS" are registered trademarks and/or service marks of PC-SIG. Microsoft, Windows, Visual Studio, Visual C++, Visual C#, and Visual Basic are either registered trademark or trademarks of Microsoft Corporation.

Product descriptions in this document are subject to change without notice.

© 2010-2012 Agilent Technologies, Inc.

[www.agilent.com](http://www.agilent.com)

[www.agilent.com/find/modular](http://www.agilent.com/find/modular)

[www.agilent.com/find/digitizers](http://www.agilent.com/find/digitizers)

For more information on Agilent Technologies' products, applications or services, please contact your local Agilent office. (For additional listings, go to [www.agilent.com/find/assist](http://www.agilent.com/find/assist).)

### Americas

Canada	(877) 894 4414
Brazil	(11) 4197 3500
Mexico	01800 5064 800
United States	(800) 829 4444

### Asia Pacific

Australia	1 800 629 485
China	800 810 0189
Hong Kong	800 938 693
India	1 800 112 929
Japan	0120 (421) 345
Korea	080 769 0800
Malaysia	1 800 888 848
Singapore	1 800 375 8100
Taiwan	0800 047 866
Thailand	1 800 226 008

### Europe & Middle East

Austria	43 (0) 1 360 277 1571
Belgium	32 (0) 2 404 93 40
Denmark	45 70 13 15 15
Finland	358 (0) 10 855 2100
France	0825 010 700 (0.125 €/minute)
Germany	49 (0) 7031 464 6333
Ireland	1890 924 204
Israel	972 3 9288 504 / 544
Italy	39 02 92 60 8484
Netherlands	31 (0) 20 547 2111
Spain	34 (91) 631 3300
Sweden	0200 88 22 55
Switzerland	0800 80 53 53
United Kingdom	44 (0) 118 9276201



**Agilent Technologies**